

INTRODUCING
THE NEW SHAPE OF LIVING



LANDPOWER
REAL ESTATE LTD. BROKERAGE
360°
AT THE CITY CENTRE



INTRODUCING TRIDEL'S
EXHILARATING NEW CONDOMINIUM RESIDENCE
AT SCARBOROUGH CITY CENTRE



360°
AT THE CITY CENTRE

Tridel introduces the new shape of living - **360° at The City Centre**. A sleek new condominium that will impress and inspire with its every degree of exhilaration. Tridel's signature design. A shimmering facade of curved glass walls and balconies. Tridel's famous Recreation and Fitness Centre with an indoor swimming pool. Innovative 1 & 2 bedroom suites with dens. Breathtaking 360° views of Toronto's skyline.

360°

AT THE CITY CENTRE

THE BEAUTY OF THE 360° SITE PLAN



The beauty of the 360° site plan is the product of careful planning and being situated on one of the hottest locations in the city, with immediate access to the Scarborough City Centre and LRT Transit Station. Featuring its own park with beautiful landscaping and shelter from trees along Brimley Road and Omni Drive - 360° at The City Centre is at the nucleus of the action, yet maintains its privacy. Access by car is effortless. Enter off Borough Drive to a stylish patterned roundabout, the residents underground parking level or to a distinctive collection of private, two-storey City Towns. 360° at The City Centre – signature design and smart planning on a perfect site.

360°

AT THE CITY CENTRE

OPEN THE DOORS TO SOPHISTICATION & INVIGORATING ACTION

Open the doors to sophistication. The lobby of **360° at City Centre** is designed in a contemporary vernacular to emphasize the key elements of smart city living. An attentive 24 hour Concierge, stylish seating lounges, posh floors, dignified columns, a fitting balance of space and structure. Then get ready. The invigorating action of **Club 360°** is coming at you. A sparkling indoor swimming pool, the technology of tomorrow, chic decor and lots of room to lounge in this incredible Fitness and Social Centre.



360°

AT THE CITY CENTRE

Introducing the New Shape of Living. 360° at The City Centre, Tridel's new community in Scarborough, a sleek new condominium that will impress and inspire with its every degree of exhilaration. 360° is a shimmering façade of curved glass walls and balconies which provide breathtaking views of the City skyline. Minutes from Highway 401 and with immediate access to the LRT Train Station, 360° at The City Centre is right at the heart of it all in Scarborough, adjacent to the Scarborough City Centre and surrounded by parks, restaurants, entertainment and all the amenities you desire.

"The 360° Collection"

Suite	View	Approx. Square Feet	Design Type	Starting Price From 3 rd Floor*	Estimated Maintenance Fee per month	Estimated Property Tax per month
1A	SW	605	1 Bedroom with Living & Dining Room and Balcony	\$143,000	\$212	\$150
1A1	E	650	1 Bedroom with Living & Dining Room and Balcony	\$153,000	\$228	\$160
1B+D	W	702	1 Bedroom with Living & Dining Room, Den and Balcony	\$165,000	\$246	\$172
1B1+D	E	710	1 Bedroom with Living & Dining Room, Den and Balcony	\$170,000	\$249	\$178
2A+D	SW	845	2 Bedrooms with Living & Dining Room, Den and Balcony	\$203,000	\$295	\$212
2B	NW	875	2 Bedrooms with Living & Dining Room and Balcony	\$215,000	\$306	\$225
2B+D	NE	945	2 Bedrooms with Living & Dining Room, Den and Balcony	\$220,000	\$330	\$230
2C	NE	952	2 Bedrooms with Living & Dining Room and Balcony	\$208,000	\$333	\$217
2DR	SW	960	2 Bedrooms with Living & Dining Room, Breakfast Room and Balcony	\$223,000	\$336	\$233
2D	NE/SW	960	2 Bedrooms with Living & Dining Room, Breakfast Room and Balcony	\$228,000	\$336	\$238
2E+D	SW	1027	2 Bedrooms with Living & Dining Room, Den, Breakfast Room and Balcony	\$238,000	\$359	\$248

THE BUILDING & AMENITIES

- ◆ 35 storey condominium
- ◆ breathtaking views of the City skyline
- ◆ Spectacular Recreation & Leisure Centre with Indoor Swimming Pool and Whirlpool
- ◆ 24 hour concierge

SUITE FEATURES & FINISHES

- ◆ Innovative 1 & 2 bedroom plus den designs
- ◆ 5 Premium quality appliances
- ◆ 360° Signature kitchen and bathroom cabinetry
- ◆ Granite countertops in kitchen
- ◆ Beautiful plank or strip laminate floor in foyer, living & dining rooms, den, bedroom(s) and hallways
- ◆ All suites feature balconies
- ◆ Tridel's advances Softwire™ technology for home entertainment and communication
- ◆ One parking space included

AREA AMENITIES

- ◆ Minutes from Highway 401
- ◆ Immediate access to the LRT Train Station
- ◆ Adjacent to the Scarborough City Centre
- ◆ Surrounded by parks, restaurants and entertainment

DEPOSIT STRUCTURE

- ◆ 5% due on signing
- ◆ 5% due 30 days after construction start
- ◆ 5% due 60 days after construction start
- ◆ 10% due upon occupancy

MAINTENANCE FEES:

\$0.35 per square foot plus hydro

TENTATIVE OCCUPANCY DATE: Summer 2005

360° AT THE CITY CENTRE PREVIEW CENTRE:

238 Bonis Avenue
(1 block north of Sheppard Ave.
west off Kennedy Rd.)
Scarborough, Ontario
Telephone: (416) 291-2455
Fax: (416) 291-2699
E-mail: 360degree@tridel.com

HOURS:

Monday – Thursday: 12 noon – 8 p.m.
Friday to Sunday & Holidays: 12 noon – 6 p.m.

SALES REPRESENTATIVES

◆ May Tsui
E-mail: mtsui@tridel.com
◆ Esther Chan
E-mail: echan@tridel.com
◆ Penny Tziortzis
E-mail: ptziortzis@tridel.com

*Prices and Specifications subject to change without notice, E. & O. E. July 22, 2002.

TRIDEL®
BUILT FOR LIFE

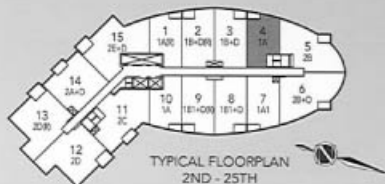
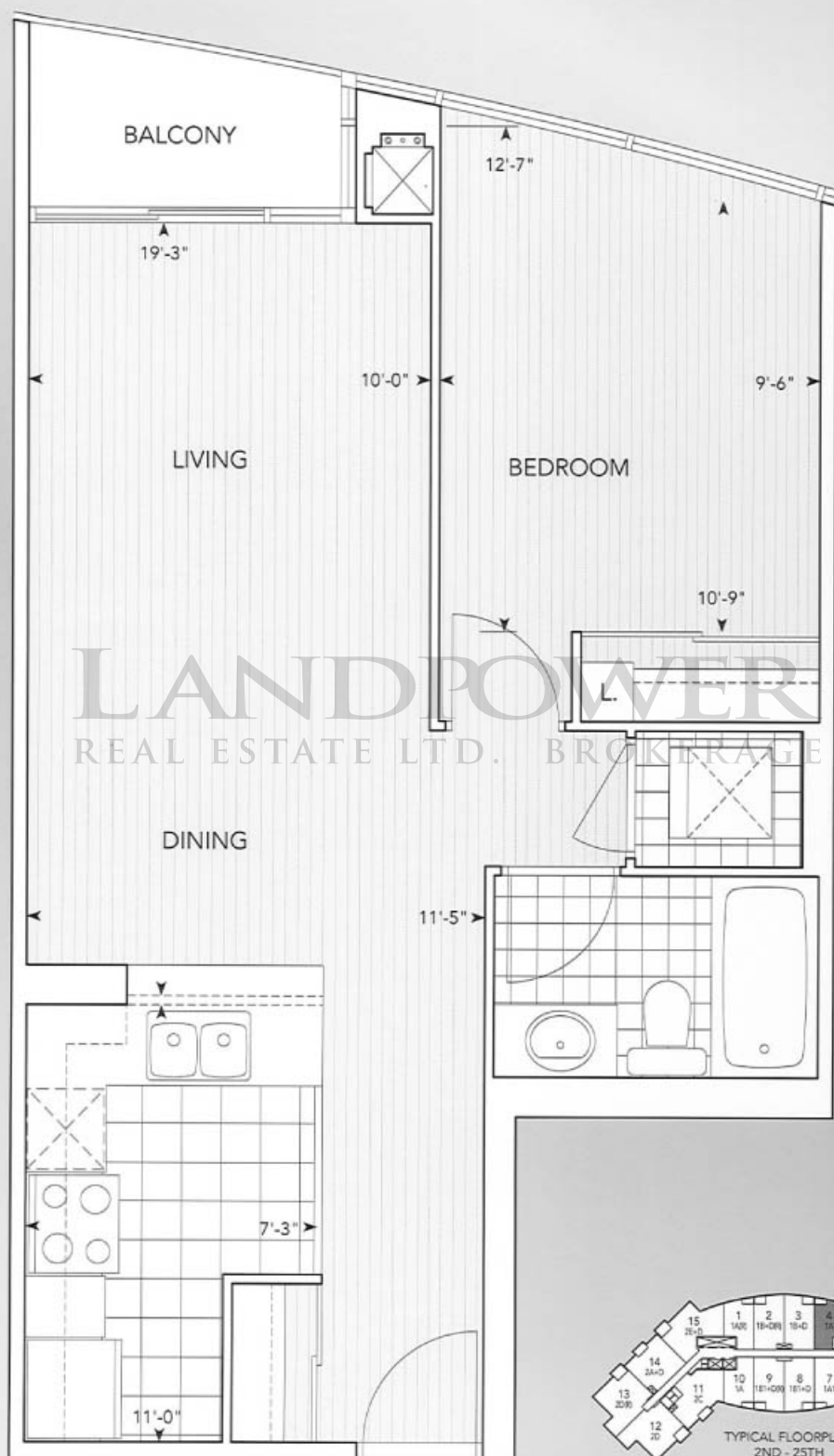
360°
AT THE CITY CENTRE

Suite Type:

Residence 1A

Description
Of Suite:

1 Bedroom, Living/Dining Room
plus Balcony



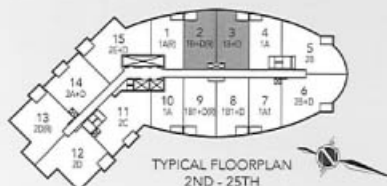
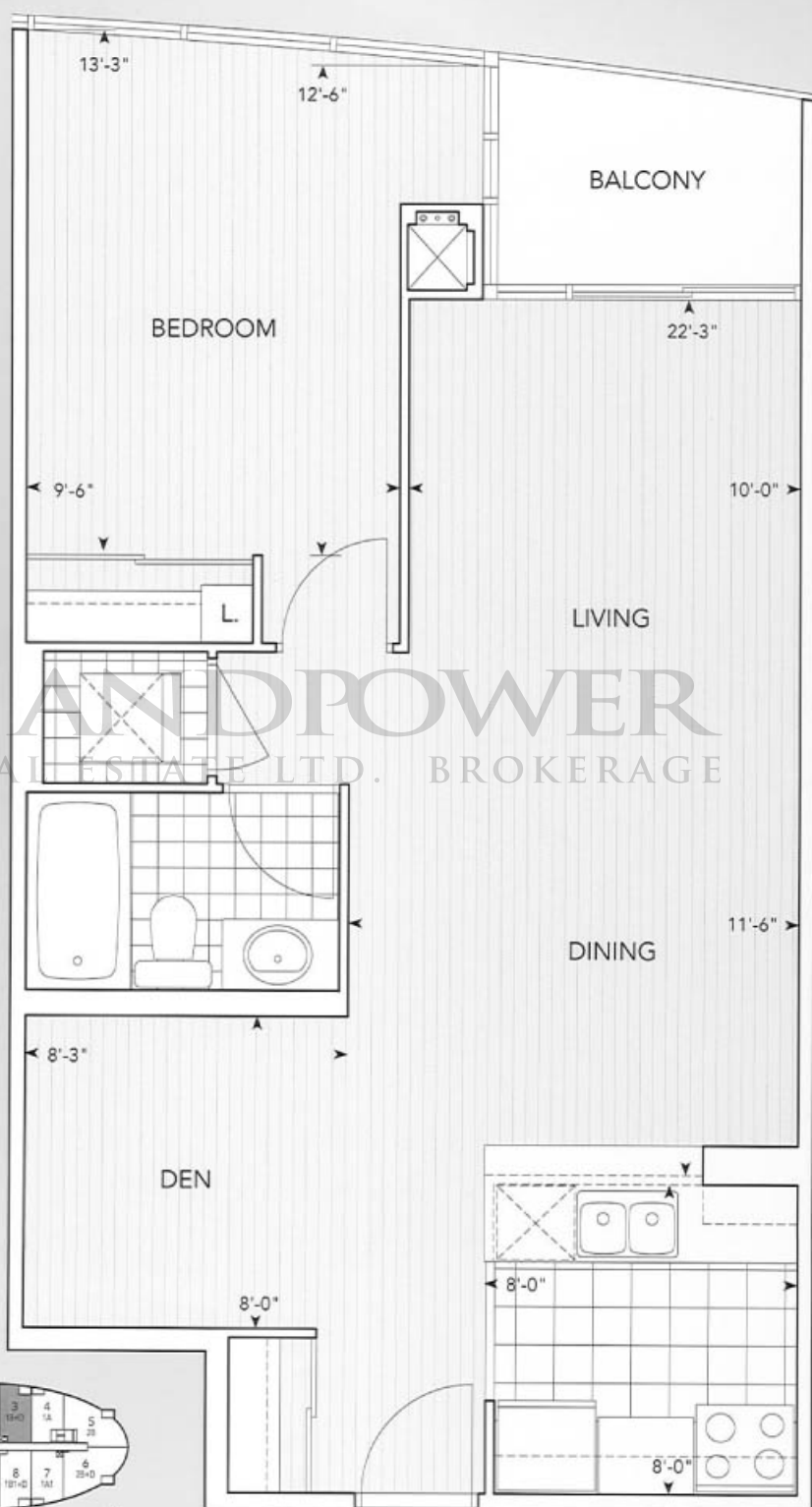
360°
AT THE CITY CENTRE

Suite Type:

Residence 1B + Den

Description
Of Suite:

1 Bedroom, Living/Dining Room,
Den plus Balcony



LANDPOWER
REAL ESTATE LTD. BROKERAGE

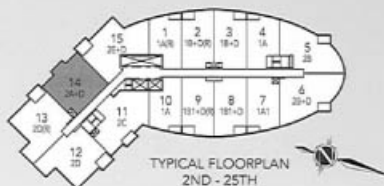
360°
AT THE CITY CENTRE

Suite Type:

Residence 2A + Den

Description
Of Suite:

2 Bedroom, Living/Dining Room,
Den plus Balcony



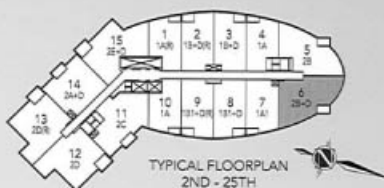
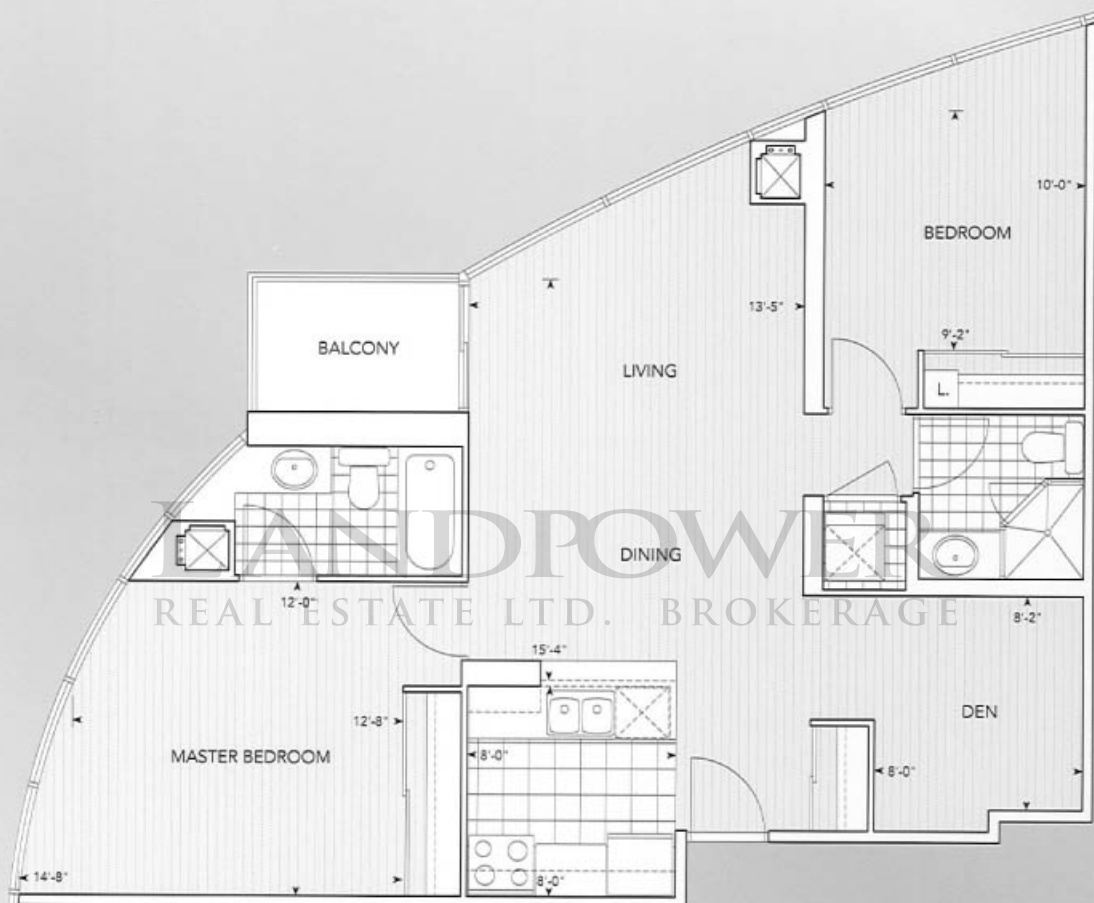
360°
AT THE CITY CENTRE

Suite Type:

Residence 2B + Den

Description
Of Suite:

2 Bedroom, Living/Dining Room,
Den plus Balcony



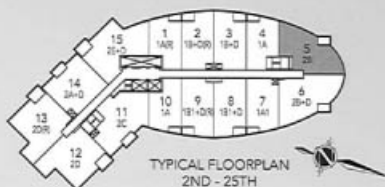
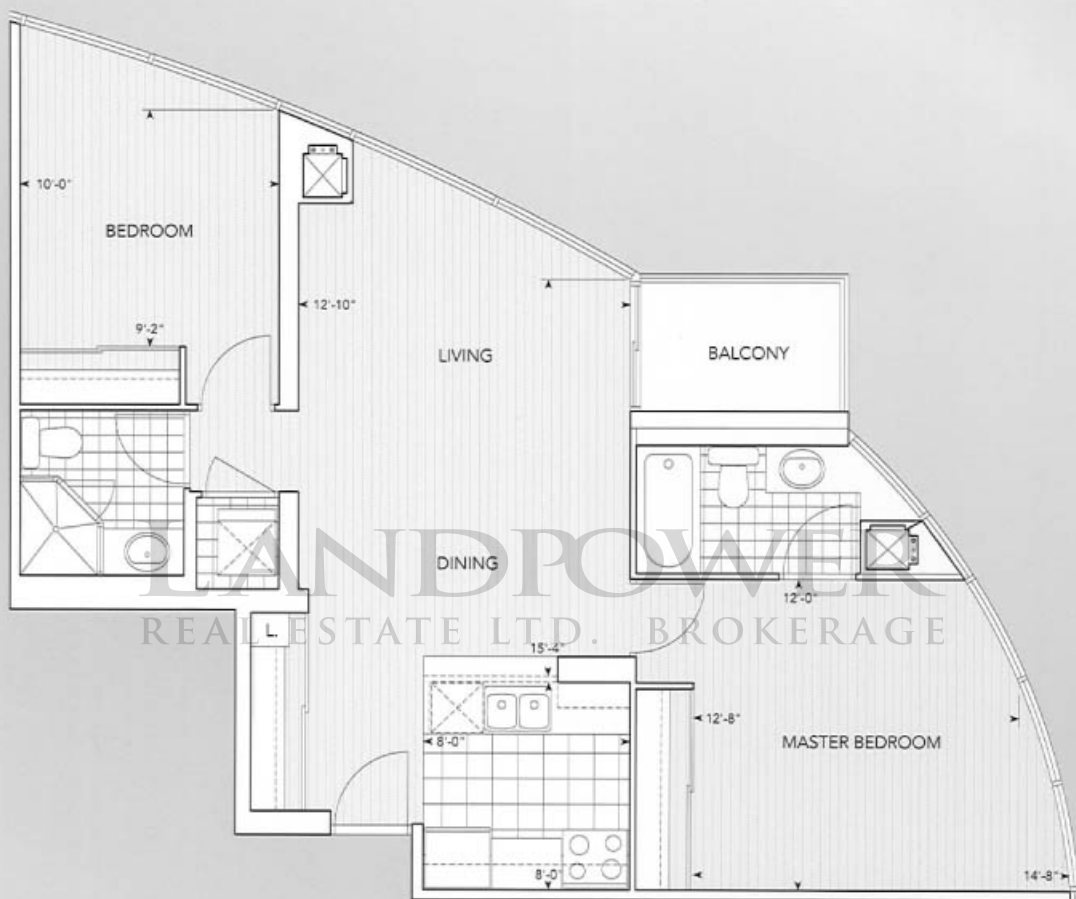
360°
AT THE CITY CENTRE

Suite Type:

Residence 2B

Description
Of Suite:

2 Bedroom, Living/Dining Room
plus Balcony



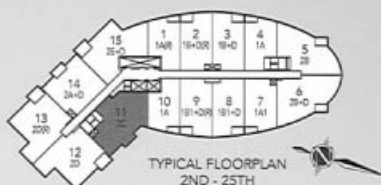
360°
AT THE CITY CENTRE

Suite Type:

Residence 2C

Description
Of Suite:

2 Bedroom, Living/Dining Room
plus Balcony



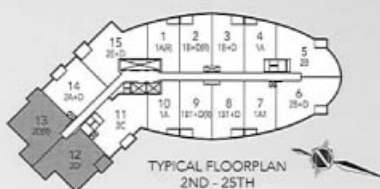
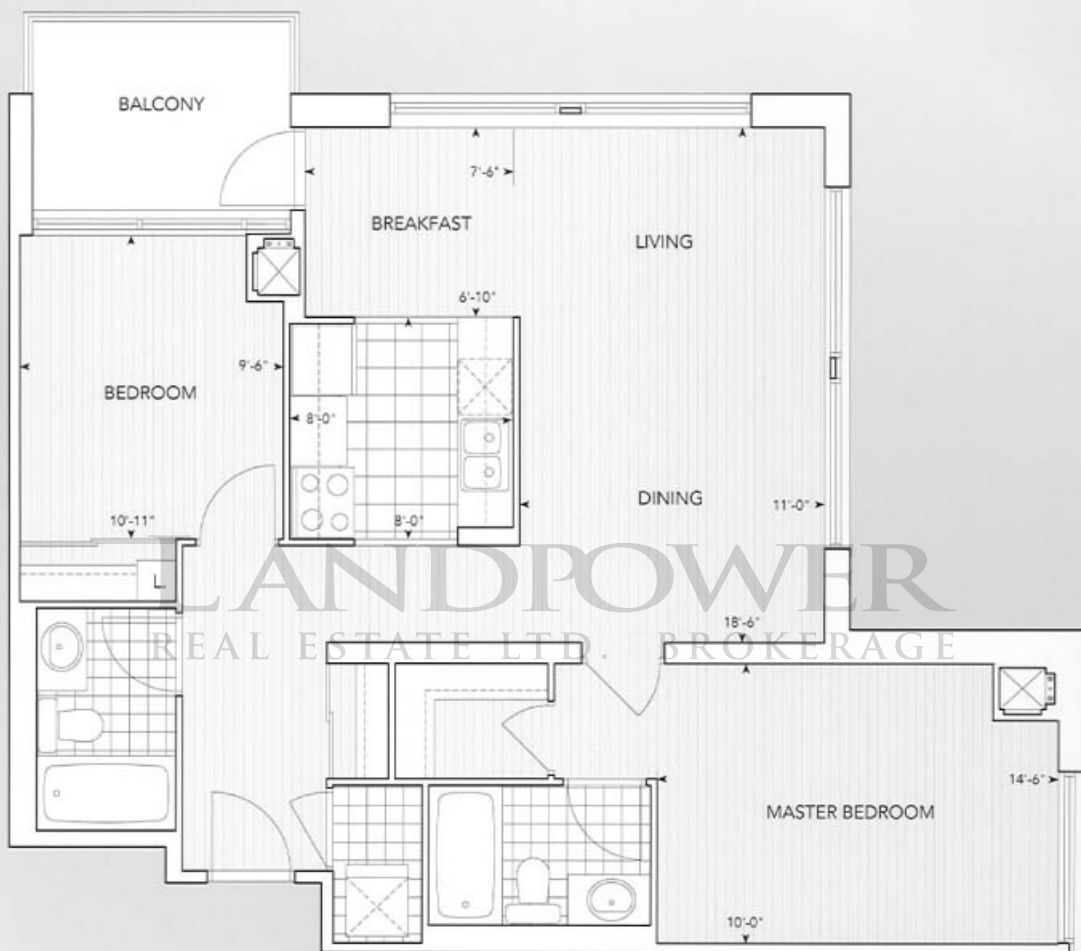
360°
AT THE CITY CENTRE

Suite Type:

Residence 2D

Description
Of Suite:

2 Bedroom, Living/Dining Room,
Breakfast Room plus Balcony



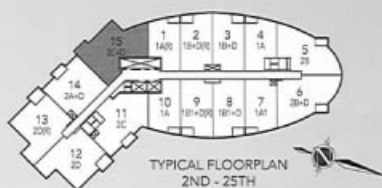
360°
AT THE CITY CENTRE

Suite Type:

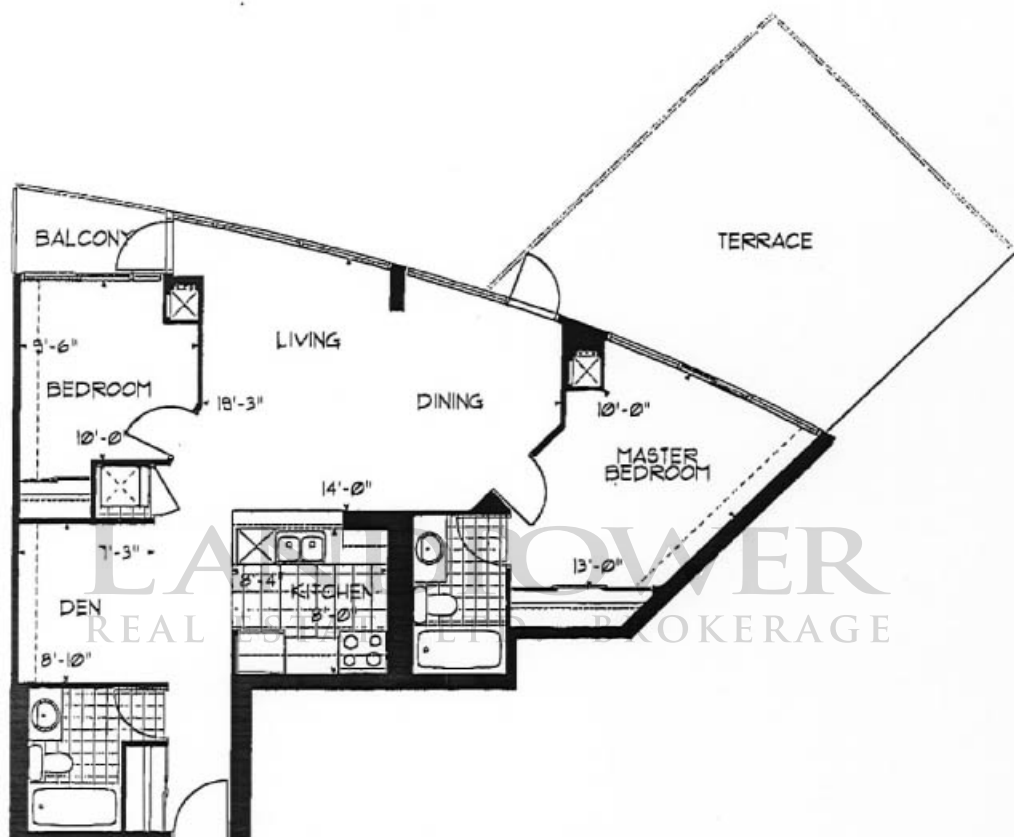
Residence 2E + Den

Description
Of Suite:

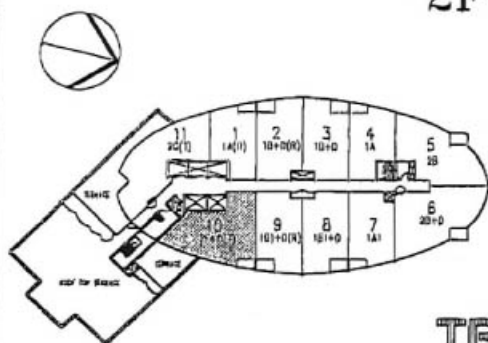
2 Bedroom, Living/Dining Room, Den,
Breakfast Room plus Balcony



360° AT THE CITY CENTRE SCHEDULE 'C'



2F+D(T)



TRIDEL®

Purchaser Acknowledgement Date

(Municipal) No.

Level Unit No.

Dimensions and specifications subject to change.
Window sizes and also in location of bathroom may
vary and purchaser will have no claim or cause of
action of any kind.
See plan for more details.