



A B S O L U T E
VLSLON

BUILDING THREE: THE CLUB TOWER

featuring the highly anticipated 30,000 sq. ft. fitness and recreation centre

ABSOLUTE
VLSION
BUILDING THREE: THE CLUB TOWER

THE ABSOLUTE VISION

FIVE MAGNIFICENT TOWERS, TOWNHOME LOFTS, GATED ENTRIES AND A LANDSCAPED CENTRAL PIAZZA



concept plan of Absolute community

ABSOLUTE VLSION

BUILDING THREE: THE CLUB TOWER

THE ABSOLUTE LOCATION

RIGHT AT THE CITY CENTRE OF MISSISSAUGA, ON THE NORTH-EAST CORNER OF HURONTARIO & BURNHAMTHORPE, ACROSS THE ROAD FROM SQUARE ONE



ANDPOWER
ESTATE . B ERAGE



SITE & PRESENTATION CENTRE



ABSOLUTE VISION

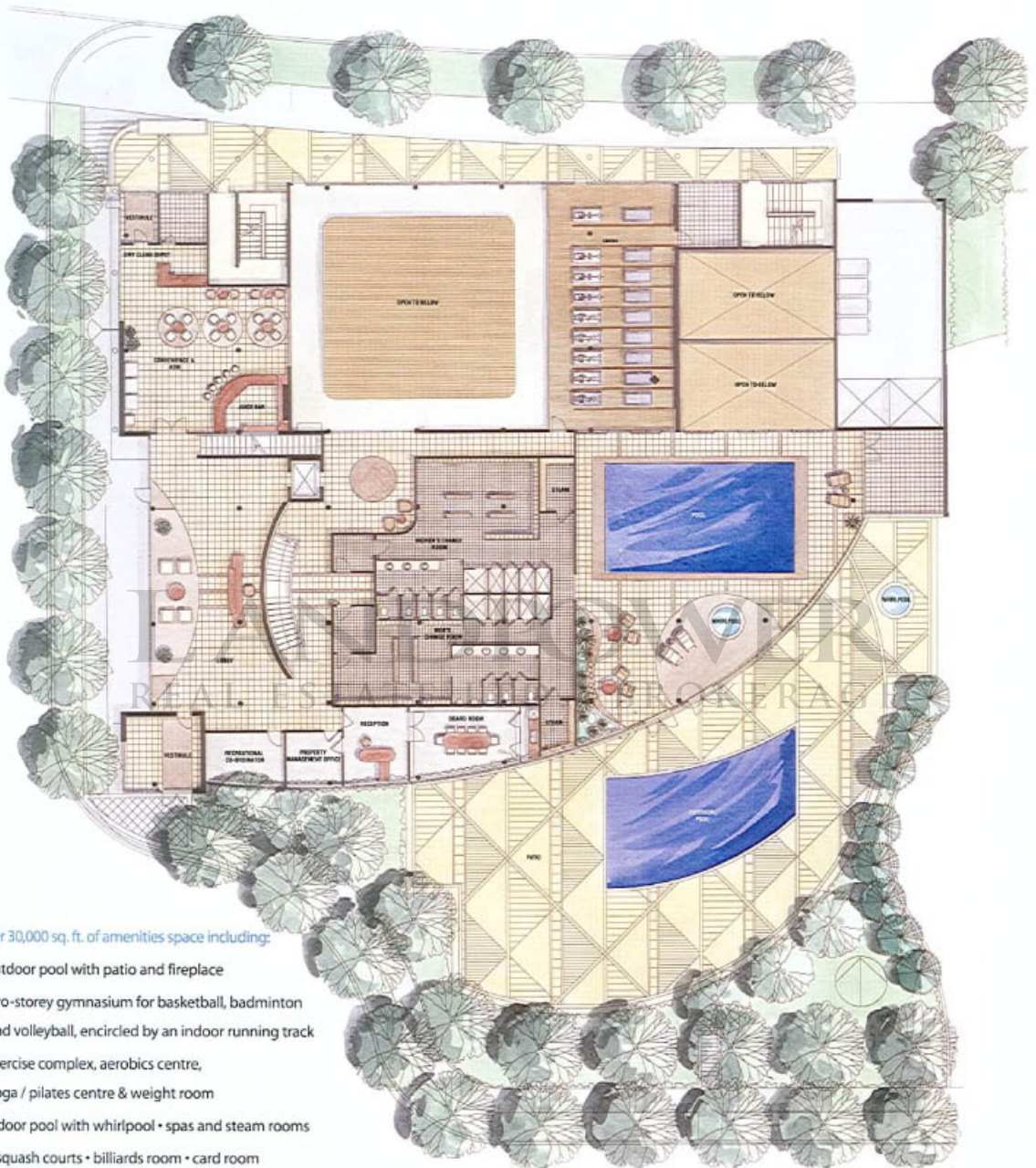
BUILDING THREE: THE CLUB TOWER

THE ABSOLUTE SITE PLAN

AN 11 ACRE TOTALLY MASTER PLANNED COMMUNITY WITH MAGNIFICENTLY LANDSCAPED GROUNDS, WALKWAYS, 5 SOARING RESIDENTIAL TOWERS, TOWN LOFTS, FOUNTAINS AND 2 SEPARATE MANNED GATE HOUSES — ALL ADJACENT TO THE NATURAL WOODLANDS OF MISSISSAUGA VALLEYS PARK.



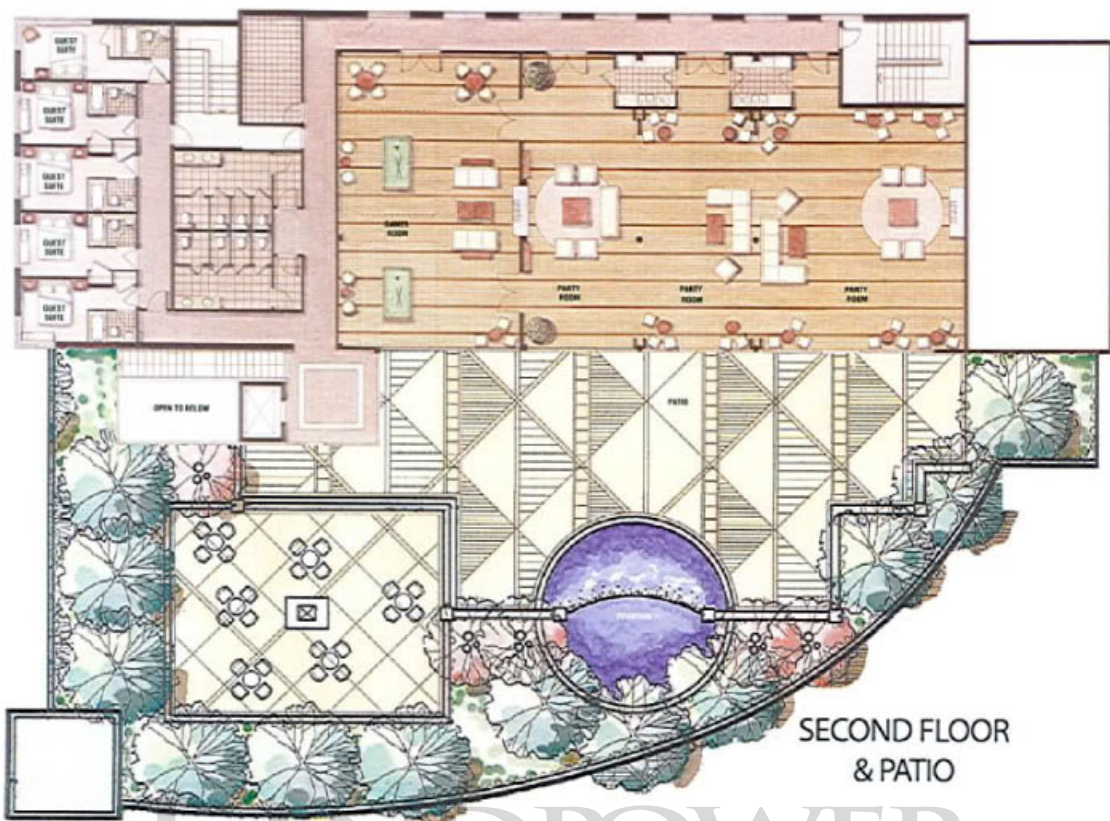
Landscape shown is approximate, site's concept. Subject to change without notice, E.A.G.C.



GROUND FLOOR

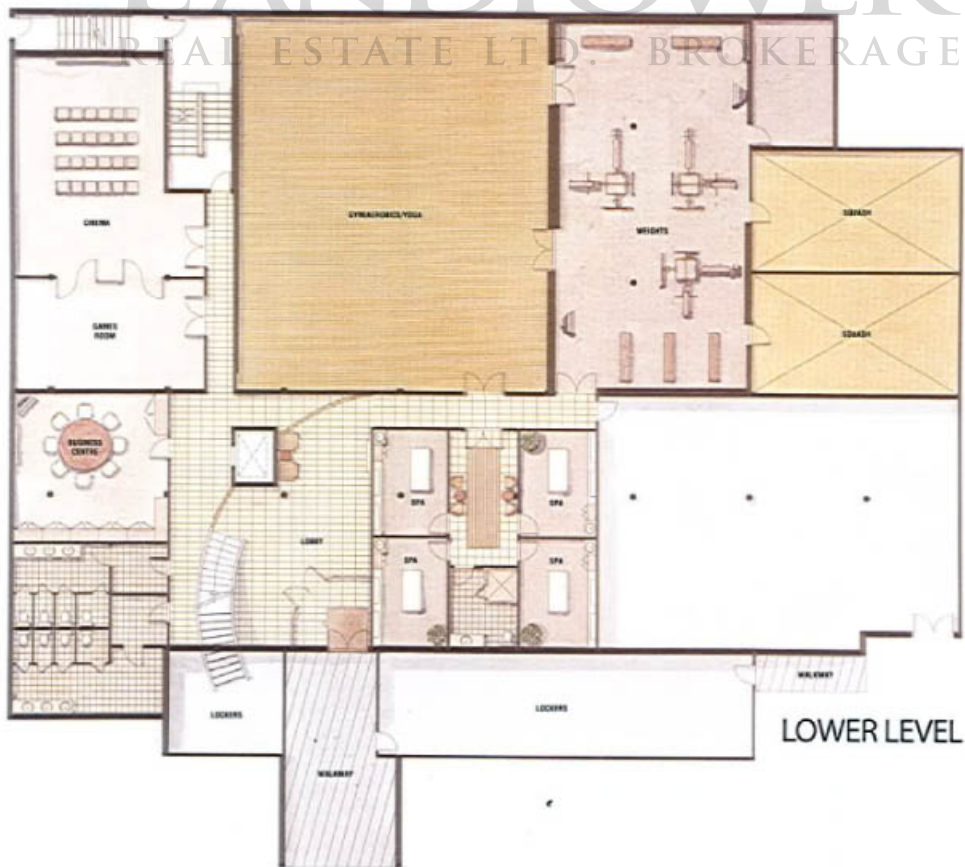
over 30,000 sq. ft. of amenities space including:

- outdoor pool with patio and fireplace
- two-storey gymnasium for basketball, badminton and volleyball, encircled by an indoor running track
- exercise complex, aerobics centre, yoga / pilates centre & weight room
- indoor pool with whirlpool • spas and steam rooms
- 2 squash courts • billiards room • card room
- board room • media room • business centre
- 3 party rooms with a kitchen • private cinema
- 5 furnished guest suites • sun deck with barbecue facilities
- full time activity director / personal trainer • athletes' lounge with juice bar



SECOND FLOOR
& PATIO

LANDPOWER
REAL ESTATE LTD. BROKERAGE



LOWER LEVEL

ABSOLUTE VISION

BUILDING THREE: THE CLUB TOWER

THE ABSOLUTE VISION COMMUNITY

The Absolute City Centre is an ultra-modern luxury residence on the cutting edge of community planning and design. Absolute Vision is the third of five spectacular structures. A striking icon of glass and steel, the tower rises boldly on the northeast corner of Hurontario and Burnhamthorpe, just across from Square One, overlooking the lake on the south and nestled by the Mississauga Valleys Park on the east. Like the community, which is its namesake, the Absolute Vision tower is architecturally at the extreme edge, going where no other building has gone. Its striking design and sheer floor to ceiling glass walls presents a façade of Absolute visual impact.

ABSOLUTE VISION BUILDING FEATURES

- Manned gatehouse, twenty-four hours per day and seven days per week
 - Two-storey grand lobby, designer-decorated and furnished
 - Secured visitor parking
 - Car wash bay in underground parking garage
 - Exercise & party room
- Professionally landscaped grounds with meandering walkways, fountains and waterfalls

THE ABSOLUTE CLUB

- Captivating and rising to three storeys, the Absolute Club is the centre piece of the Absolute community
 - Aqua-fitness, heated indoor swimming pool with whirlpool jet tub
 - Heated outdoor swimming pool for seasonal enjoyment
 - Sun deck with BBQs and lounging areas
 - Gym for volleyball, "half court" basketball and badminton
 - Indoor running and walking track
 - Total fitness, cardio machines, multi-station and exercise equipment
 - Strength training area, catering to hand weights, and weight machines and benches
 - Fitness studio for pilates, yoga, tai chi, step
 - Spacious change rooms, showers, lockers with His and Hers steam rooms
 - Entertainment rooms with fully-equipped kitchen for private functions
 - Billiards room with four competition size tables
 - Two squash courts
- Cinema, comfortably furnished theatre with extra-large screen TV, DVD player and Surround Sound system
 - Spa room for privately arranged massage therapy
 - Full-time activity director/personal trainer
 - Five guest suites for the convenience of your overnight visitors
 - Card room
 - Reception desk and directors office
 - Board room for private/condominium meetings

PEACE OF MIND FEATURES

- 24-Hour gatehouse controlled access
 - All entrances and exits are monitored with closed circuit television system
 - Card access throughout all common areas
- Enter-phone and cameras at all visitor entrances allowing in-suite viewing through cable television
- All parking with security alarm stations and security monitoring from manned gatehouses
- Intrusion alarm system with key pad at all suite entries. Window contacts for ground-level suites
 - Ground-level lofts are fitted with window and door contacts for added security
 - Emergency voice communication system, smoke and heat detectors

SUITE FEATURES

- Nine foot ceiling heights
- Choice of porcelain, ceramic tile or pre-finished engineered-wood floors in entrance foyer
- Choice of pre-finished engineered-wood floors in living room, dining room, hallways and den
 - Choice of 40 oz. broadloom with underpad for bedrooms
- Suite entry designed by professional interior designer, with solid core entry door, security privacy viewer and quality finished hardware
 - Embossed interior doors with wood frames and quality finished hardware
 - Interior designer selected 4" baseboards and 2-1/4" casings
 - Mirrored sliding doors on all closets with sliding doors, as per plan
 - Vinyl-coated wire closet shelving, as per plan
- All ceilings to be white stippled, except in kitchen, bathrooms and laundry/storage area
 - Private balconies, terraces or patios, as per plan
- Kitchen, laundry and bathroom ceilings to be smooth and painted white
 - Interior walls painted with white latex
- Semi-gloss paint in kitchens, bathrooms and all woodwork and trim
 - One parking spot per home
 - One locker per home

ABSOLUTE VISION

BUILDING THREE: THE CLUB TOWER

THE ABSOLUTE VISION COMMUNITY

KITCHENS AND LAUNDRY ROOMS

- Your choice of traditional and contemporary designed cabinetry in a variety of finishes
 - Upper kitchen cabinets to be over-sized
 - Choice of imported ceramic tile
 - Choice of laminate countertops
 - Imported ceramic tile backsplash
 - Double bowl stainless steel sink with single lever faucet and pull-out vegetable spray
 - Six major appliance package including self-clean oven, frost-free fridge, full-size stacked washer and dryer, built-in dishwasher and over-the-range built-in microwave with integrated exhaust fan (available in all black or all white)
 - Ceiling mounted halogen track lighting
 - Task lighting under upper cabinets
 - Imported white ceramic floor tile in laundry room

BATHROOMS

- Choice of quality cabinetry
- Your choice of imported ceramic tile for tub and shower surrounds
 - Choice of imported ceramic floor tile
 - Relaxing deep soaker tubs, as per plan
 - One-piece toilets
- Shower with ceiling mounted light and tempered glass enclosures available in clear glass (as per plan)
 - Cultured marble countertop, banjo style, with integrated washbasin
 - White ceramic accessories including towel bar, toilet paper holder and soap dish
 - Designer polished chrome fixtures in bathrooms and powder rooms, as per plan
 - Full-width vanity mirrors

STATE-OF-THE-ART ELECTRICAL & MECHANICAL FEATURES

- Individually controlled centralized heating & cooling system
- Individual service panel with circuit breakers and copper wiring throughout
 - Category 5 voice data wiring
 - RG6 coaxial cable wiring for high-speed internet access
- Dual receptacles allowing both television and cable internet connections located in living room, master bedroom and den, as per plan
 - Ceiling light fixtures provided in foyer, kitchen, bedrooms, dens and walk-in closets as per plan
 - Capped ceiling outlet for light fixture in the dining room
 - Ground fault electrical outlets in all bathrooms
 - All appliances connected and ready to use
- Pre-wired telephone outlets in kitchen, living room, master bedroom, second bedroom and dens where applicable
 - Television outlets wired in living room, master bedroom, second bedroom and dens where applicable
 - In-suite coded security system
 - All exhaust fans vented to the exterior

"PLATINUM" COLLECTION (floors 34 & 35)

In addition to the above finishes - these upgrades are featured on the Platinum floors:

- Ten foot ceiling heights
- Crown mouldings in living and dining room area
- Choice of 50 oz. broadloom for bedrooms
- Choice of engineered pre-finished wood flooring in foyer, living room, dining room, corridors and den as per plan
 - 5" baseboards and 3-1/2" casings around interior doors
 - Task lighting under upper cabinet in kitchen
- Granite kitchen countertop complete with stainless steel double bowl sink and single-lever chrome faucet and pull-out vegetable spray
 - Premium appliance package includes "stainless" steel smooth top self-clean stove, fridge, dishwasher, and over-the-range built-in microwave, integrated with rangehood with exhaust vented to the exterior
 - Full-size stacked washer and dryer
- Choice of imported ceramic, slate, marble or limestone flooring in foyer, kitchen, breakfast area, powder rooms and bathroom floors as per plan
 - Deep soaker tubs & separate shower stalls complete with framed clear glass as per plan
 - Mirrored sliding doors on closets as per plan



VISION, THE CLUB TOWER PRICE LIST

* A Master Planned Residential Community overlooking Square One and acres of parkland and featuring

* The Private "Absolute Club" which will include an Indoor and Outdoor Swimming Pool plus a Whirlpool Bath. A well equipped Fitness centre with a Gym equipped for Basketball and Volleyball. His & her Steam Rooms and Change Rooms, Squash Courts. There are also Multi Purpose Party Rooms with caterer's kitchen and bar, Private Dining Room for catered functions leading to a Breathtaking Outdoor Patio. Other rooms include a Media Room with large screen T.V., Billiard Room, Library and Meeting room. Five Guest Suites are also available.

<u>MODEL</u>	<u>TYPE</u>	<u>SIZE</u>	<u>VIEW</u>	<u>PRICED FROM*</u>
Insight	1 Bedroom + Den	670	E / S	\$212,400
Intuition	1 Bedroom + Den	700	E / S	SOLD OUT
Vision	1 Bedroom + Den	712	NW	\$228,400
Inspiration	2 Bedrooms	765	N / W	\$243,900
Euphoria ***	2 Bedrooms	790	S & E	\$255,400
Destiny	2 Bedrooms	870	N & E / W & S	\$278,900
Paragon ***	2 Bedrooms + Den	950	S	\$305,400
Innovation ****	2 Bedrooms + Den	990	E	SOLD OUT
Radiance	2 Bedrooms + Den	1,030	S & E	\$330,900
Phenomenon ****	3 Bedrooms + Den	1,250	N & E	\$461,900

NOTE: Terrace Premiums apply to 1st Floor Units

*** Prices Include :**

G.S.T.

Prices increase \$500 per floor. (Floors 4 to 33 inclusive)
 Prices increase \$5,000 per floor. (Floors 34 to 35 inclusive).
 Prices based on 4th floor unless stated otherwise - Subject to availability
 *** Prices based on 13th floor - Subject to availability
 **** Prices based on 29th floor - Subject to availability

Deposits : 15% Total Deposit : \$2,000 on signing, then 5% of the Purchase Price minus \$2,000 in 30 days, then 5% of the Purchase Price in 60 days, then 5% of the Purchase Price in 150 days.
 Plus 10% of Purchase Price on Occupancy
 (All deposits made payable to Goldman, Spring in trust)

Lockers : One Included in Purchase Price

Indoor Parking : One Deeded Parking Spot Included in Purchase Price
 Additional Parking : Available for Penthouses only at \$20,000 per spot

Occupancy : October 2007

Maintenance Fees: Based upon 35 cents/Sq Ft per month Plus Parking & Locker Fees
 (Includes all utilities except for Hydro, Telephone and Cable TV.)

Annual Property Taxes: Estimated to be 1.25% of the Purchase Price.

For Information Call: **Tel: (905) 803-0556 Fax: (905) 803-9421**
www.absolutecondos.com

Sales Representatives:

Sharon Florian
 Jessica Robinson
 Grainne Maffucci

sharon@absolutecondos.com
jessica@absolutecondos.com
grainne@absolutecondos.com

Office Hours : Monday to Thursday - 12 noon to 7pm
 Saturday & Sunday - 11am to 6pm

Exclusive Marketing Consultant: International Home Marketing Group Limited/ Brokers Protected

Prices, Terms, Specifications and Plans Subject to change without notice and Area Square Footages are Approximate. E.S.O.E. JUNE 1, 2006



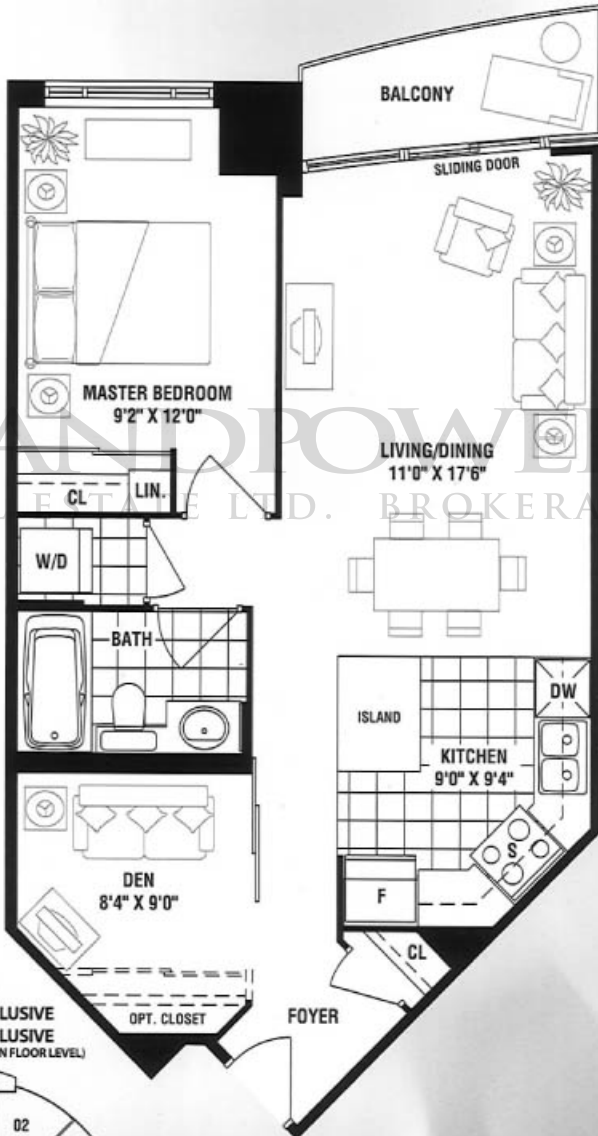
ABSOLUTE VISION

BUILDING THREE: THE CLUB TOWER

INSIGHT 670 sq. FT.

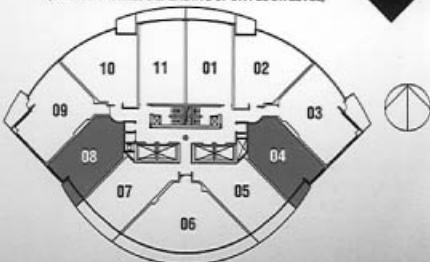
ONE BEDROOM + DEN

SUITE AREA: 670 SQ. FT. • BALCONY AREA: 43 SQ. FT. • TOTAL AREA: 713 SQ. FT.



LANDPOWER
REAL ESTATE LTD. BROKERAGE

04 - FLOORS 1-30 INCLUSIVE
08 - FLOORS 2-35 INCLUSIVE
(BALCONY VARIES DEPENDING UPON FLOOR LEVEL)



Materials, Appliances and Fixtures are subject to change without notice.
All floor plans are approximate dimensions.
Actual layout may vary from the model. © 2008

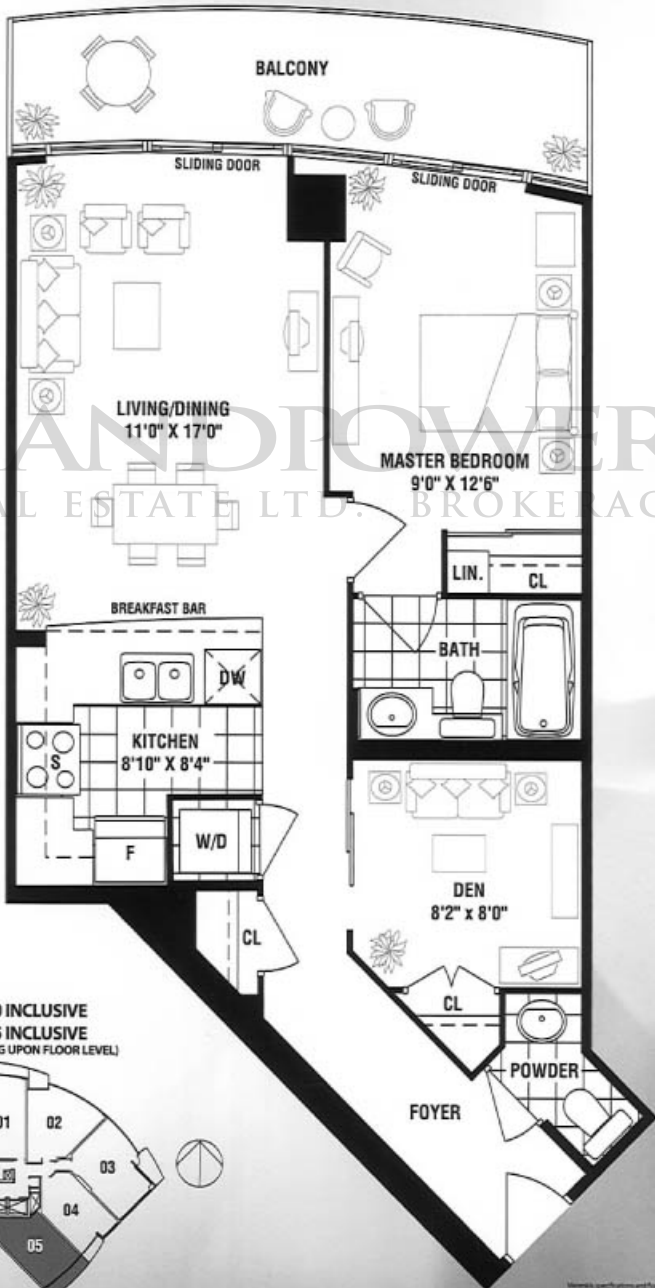
ABSOLUTE VISION

BUILDING THREE: THE CLUB TOWER

INTUITION 700 sq. FT.

ONE BEDROOM + DEN

SUITE AREA: 700 SQ. FT. • BALCONY AREA: 102 SQ. FT. • TOTAL AREA: 802 SQ. FT.



Measurements, specifications and floor plans are subject to change without notice.
All floor plans are approximate dimensions.
Actual usable floor space may vary from the stated floor area.

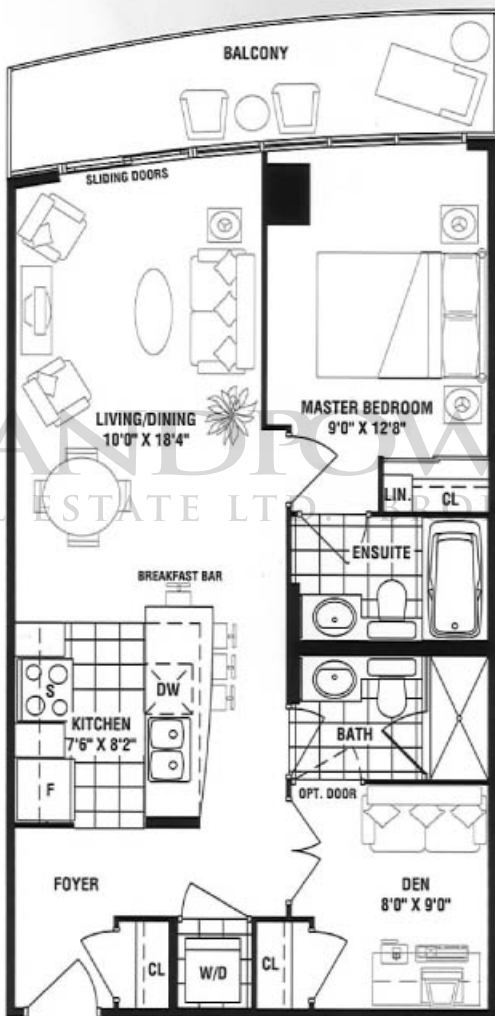
ABSOLUTE VISION

BUILDING THREE: THE CLUB TOWER

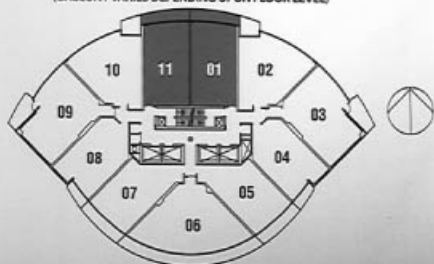
VISION 712 sq. FT.

ONE BEDROOM + DEN

SUITE AREA: 712 SQ. FT. • BALCONY AREA: 96 SQ. FT. • TOTAL AREA: 808 SQ. FT.



FLOORS 2-35 INCLUSIVE
(BALCONY VARIES DEPENDING UPON FLOOR LEVEL)



Materials, specifications and floor plans are subject to change without notice.
All floor plans are approximate dimensions.
Includes floor space may vary from the stated floor area.

ABSOLUTE VISION

BUILDING THREE: THE CLUB TOWER

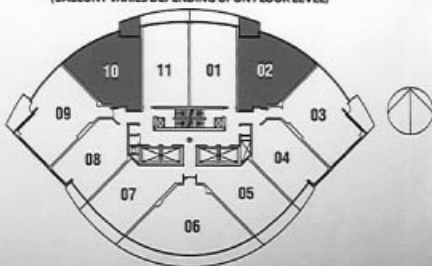
INSPIRATION 765 sq. FT.

TWO BEDROOM

SUITE AREA: 765 SQ. FT. • BALCONY AREA: 60 SQ. FT. • TOTAL AREA: 825 SQ. FT.



FLOORS 1-35 INCLUSIVE
(BALCONY VARIES DEPENDING UPON FLOOR LEVEL)



Elements, uses, fixtures, and floor plans are subject to change without notice.
All floor plans are approximate dimensions.
Actual square foot spacing may vary from the stated floor area.

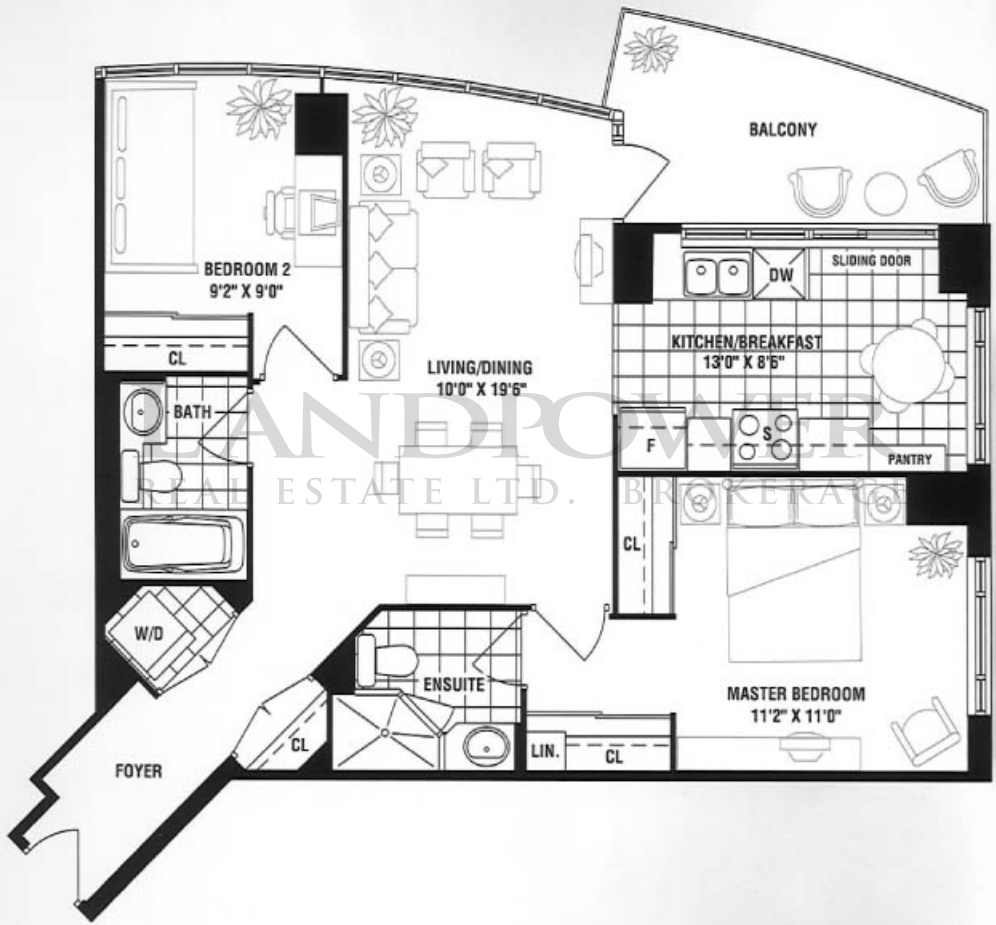
ABSOLUTE VISION

BUILDING THREE: THE CLUB TOWER

DESTINY 870 SQ. FT.

TWO BEDROOM

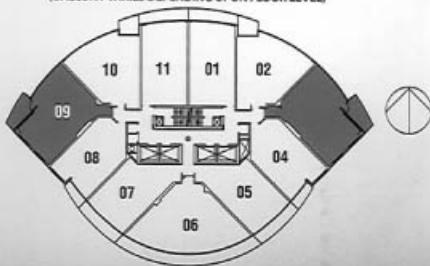
SUITE AREA: 870 SQ. FT. • BALCONY AREA: 92 SQ. FT. • TOTAL AREA: 962 SQ. FT.



03 - FLOORS 1-30 INCLUSIVE

09 - FLOORS 3-35 INCLUSIVE

(BALCONY VARIES DEPENDING UPON FLOOR LEVEL)



Items, specifications and floor plans are subject to change without notice.
All floor plans are approximate dimensions.
Actual usable floor space may vary from the stated floor area.

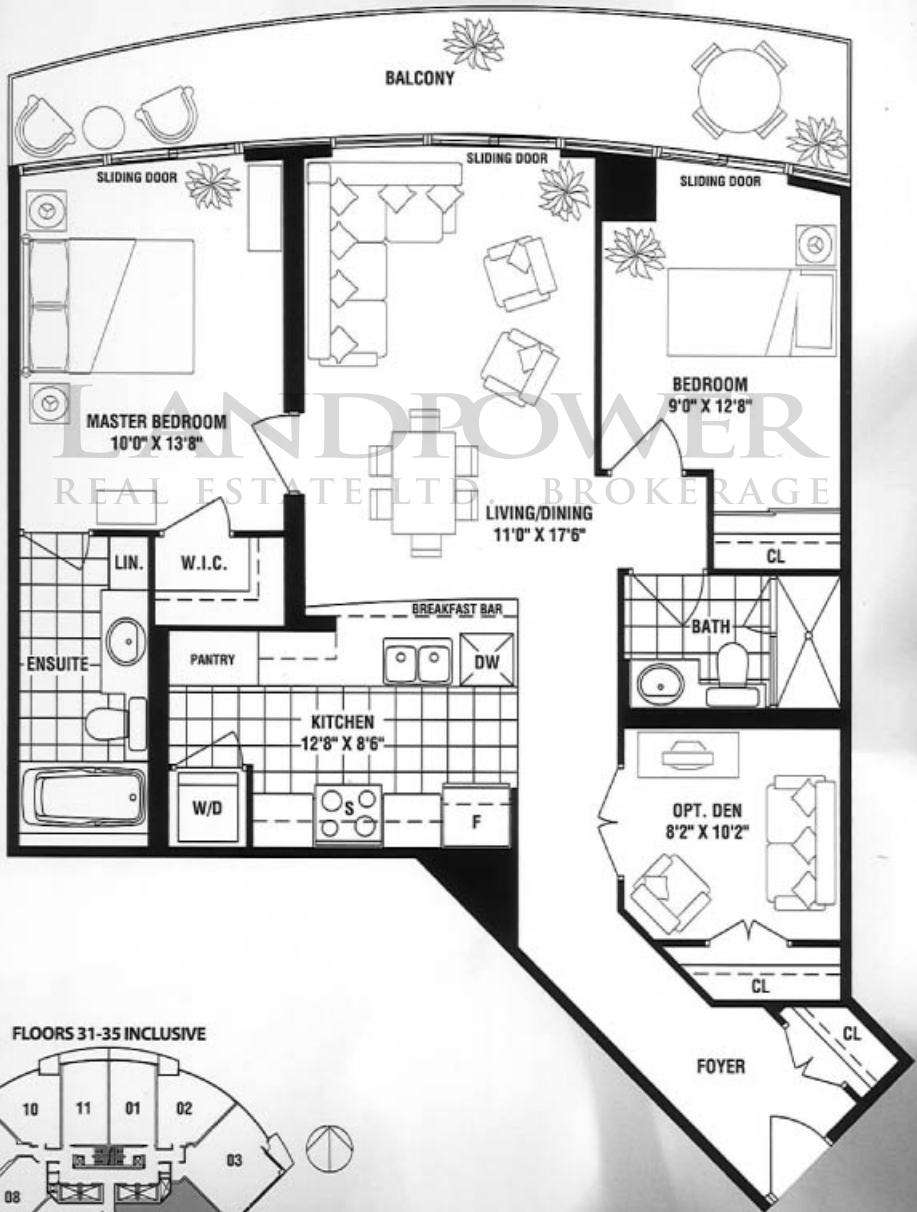
ABSOLUTE VISION

BUILDING THREE: THE CLUB TOWER

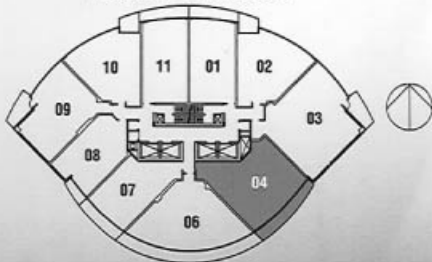
INNOVATION 990 sq. FT.

TWO BEDROOM + DEN

SUITE AREA: 990 SQ. FT. • BALCONY AREA: 145 SQ. FT. • TOTAL AREA: 1135 SQ. FT.



FLOORS 31-35 INCLUSIVE



Materials, specifications and floor plans are subject to change without notice.
All floor plans are approximate dimensions.
Actual usable floor space may vary from the stated floor area.

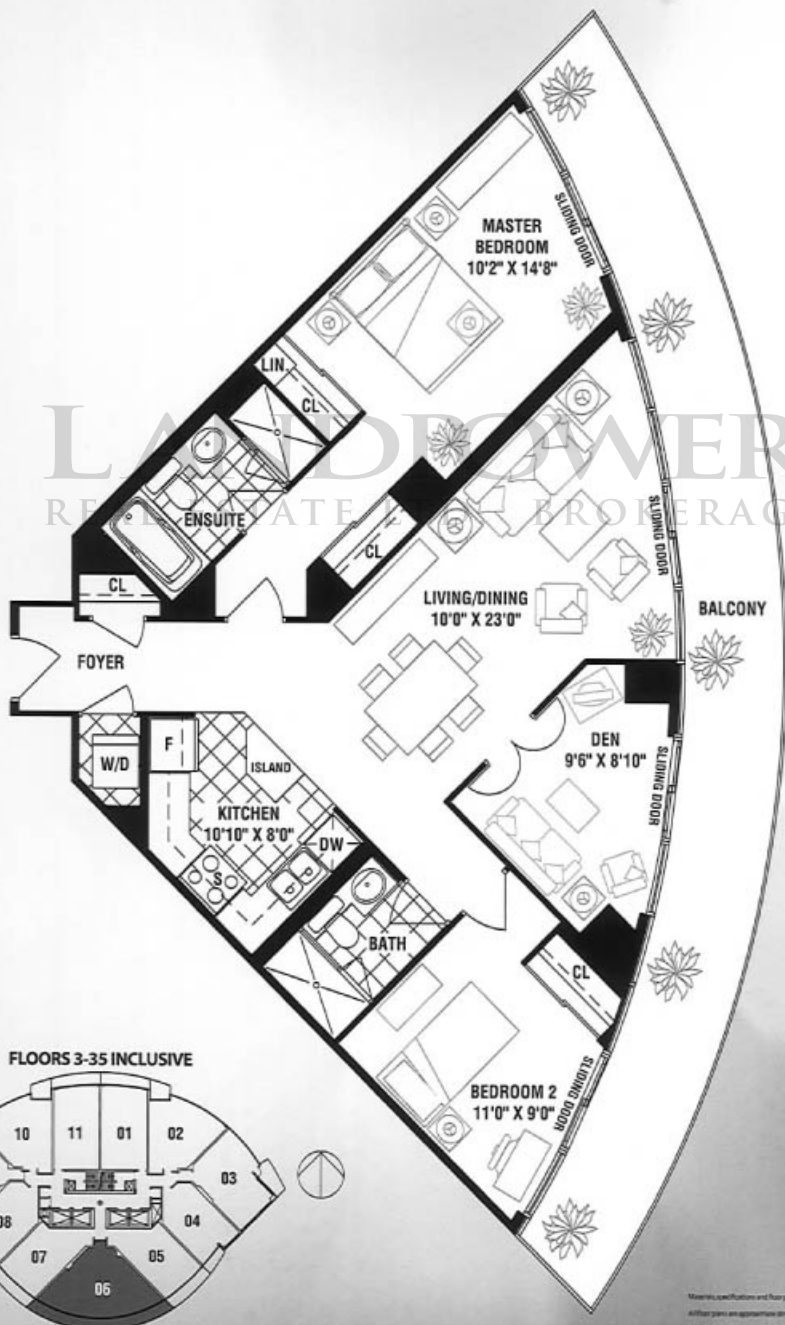
ABSOLUTE VLSION

BUILDING THREE: THE CLUB TOWER

RADIANCE 1030 SQ. FT.

TWO BEDROOM + DEN

SUITE AREA: 1030 SQ. FT. • BALCONY AREA: 301 SQ. FT. • TOTAL AREA: 1331 SQ. FT.



Materials, specifications and floor plans are subject to change without notice.
All floor plans are approximate dimensions.
Actual outside floor space may vary from the stated floor area.

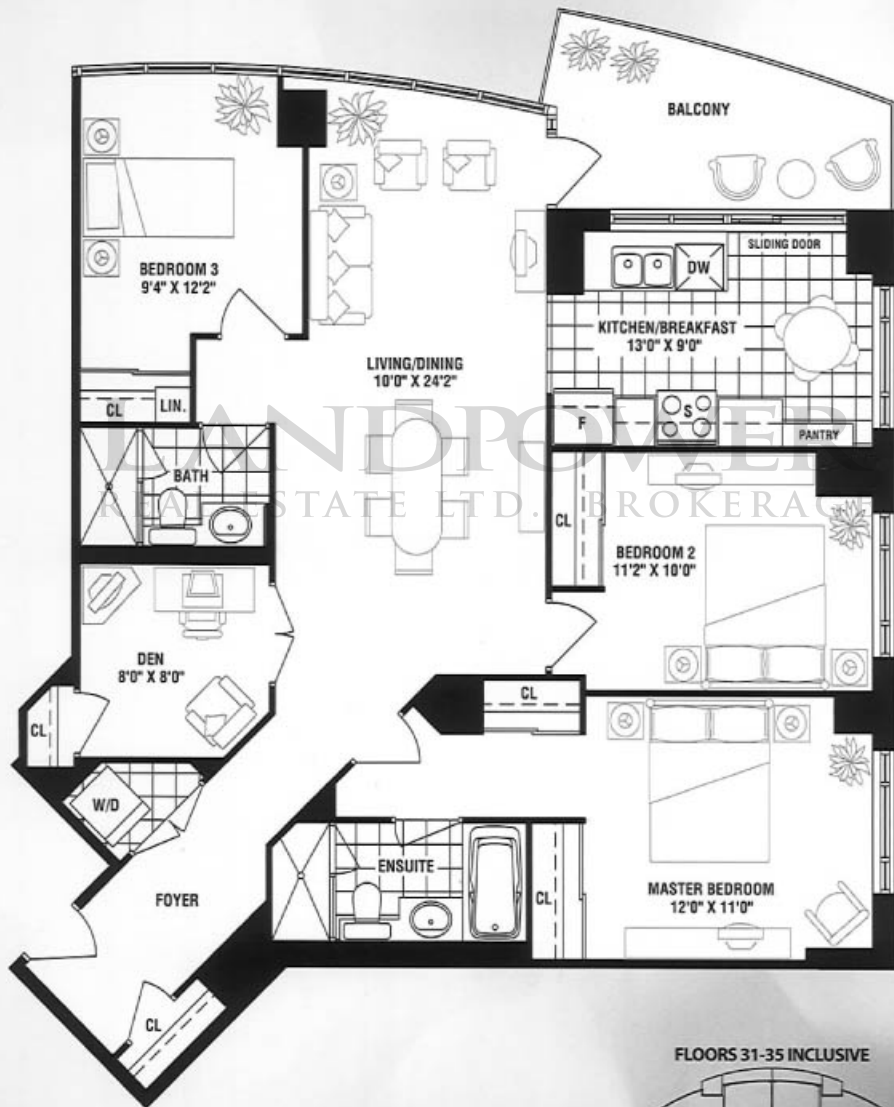
ABSOLUTE VISION

BUILDING THREE: THE CLUB TOWER

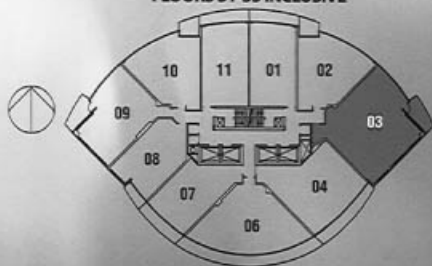
PHENOMENON 1250 sq. FT.

THREE BEDROOM + DEN

SUITE AREA: 1250 SQ. FT. • BALCONY AREA: 92 SQ. FT. • TOTAL AREA: 1342 SQ. FT.



FLOORS 31-35 INCLUSIVE



Plan, specifications and floor plans are subject to change without notice.
All floor plans are approximate dimensions.
Actual floor area may vary from the stated floor area.



P: 905-803-0556

F: 905-803-9421

ABSOLUTECONDOS.COM

