

*to find beauty*



LANE REAL ESTATE BROKERAGE

*around us*



THE BAYVIEW

TERRACED CONDOMINIUM RESIDENCES





*A Classic  
Toronto Address*

REAL ESTATE LTD. BROKER





REAN PARK

DERVOCK CRESCENT

CLARIDGES  
CONDOMINIUMS

THE BAYVIEW  
MANOR  
HOUSE

THE  
BAYVIEW

AMICA AT  
BAYVIEW GARDENS

EXISTING RESIDENTIAL

REAN DRIVE

FUTURE DANIELS RESIDENTIAL

SALES  
CENTRE



SHEPPARD AVENUE EAST

Landscape design concept is for illustration purposes only and is subject to municipal and other regulatory approvals. E. & O.E.



This spectacular outdoor oasis offers residents a retreat with landscaped pathways sprinkled with seating alcoves.

The Donningvale Lounge provides a relaxing environment, versatile in design, with a formal dining area and a catering kitchen, accommodating large groups or small intimate gatherings. An impressive fireplace creates a stately focal point, the ideal setting for an evening of entertaining. The lounge spills out onto the beautifully landscaped McLean Terrace, complete with comfortable outdoor seating and barbecue facilities. For a quiet evening at home, The Glenmar Home Theatre is a perfect space to enjoy your favourite film on the big screen.

Adjacent to The Bayview Club, residents will also enjoy the five-star inspired services of Amica at Bayview Gardens LUXURA™ Spa.

From serenity and relaxation to animated entertaining, it's all available at your fingertips.



Illustration is artist's concept. Specifications subject to change without notice. E & O.E.



# Location is Everything



Map is not to scale. E & O E

The Bayview is located at Bayview and Sheppard Avenues, one of Toronto's most cosmopolitan locations. This enviable location is a hub of outstanding cultural, culinary, and shopping experiences. Bayview Village Shopping Centre, recognized as one of the country's premier shopping destinations, offers some of Toronto's most exclusive retail stores, including fashion boutiques, fabulous home décor shops, and the convenience of Loblaws.

In addition to these pleasurable diversions is theatre, and a host of cultural events, all a short walk or drive. This location is unrivalled in convenience and accessibility with the The Bayview Subway station at your doorstep and Highways 401, 404 and the Don Valley Parkway just minutes away.





## THE BAYVIEW

TERRACED CONDOMINIUM RESIDENCES

# FINISHING APPOINTMENTS

### The Bayview – A Classic Toronto Address

- » Designed in the timeless spirit of French Provincial Architecture, The Bayview is positioned as the portal to Daniels' immensely successful NY Towers community at Bayview and Sheppard
- » This sophisticated residence offers a collection of Terraced Condominium Residences overlooking Rean Park and the Toronto skyline
- » The Bayview is complemented by The Bayview Manor House, a unique, boutique-styled residence
- » A stately tree-lined entrance leads to a central round-about drop off
- » The Bayview two-storey Lobby, with its insightful design, is lavishly appointed with glittering chandeliers, intricate wall details, a fireplace, and seating areas
- » An Executive Concierge welcomes residents and guests, while overseeing the sophisticated security measures
- » A Resident Services Director provides on-site customer service for residents
- » Two tastefully decorated elevators deliver you to your destination

### The Bayview Club

- » World-renowned designer Brian Gluckstein has assembled a collection of sophisticated amenities, designed exclusively for The Bayview and The Bayview Manor House. Encompassing comfort, style and service, The Bayview Club epitomizes a refined, yet active lifestyle
- » The Windfield Library, with its understated elegance and intricate millwork, offers comfortable seating, card tables, and a fireplace – the ultimate escape for a quiet afternoon
- » The fully landscaped Rosegarden Courtyard, with seating alcoves and walking paths, provides a welcome escape to nature in the heart of the city
- » The Glenmar Home Theatre features state-of-the-art equipment and comfortable theatre-styled seating

- » Enjoy your personal level of fitness in the fully equipped Fitness Studio, complete with His and Her change rooms
- » The inviting Donningvale Lounge offers an intimate seating area with a cozy fireplace. A formal dining table and a fully equipped catering kitchen complete this ideal venue
- » Enjoy the exquisitely landscaped McLean Terrace, off The Donningvale Lounge, with seating overlooking views of Rean Park, ideal for alfresco dining or a casual barbeque
- » A short stroll through a sunlit Atrium leads to Amica at Bayview Gardens LUXURA™ Spa with an Aquafit indoor pool, elegant His and Her change rooms, a pampering selection of a-la-carte spa treatments and a Wellness and Vitality™ Centre. Completing this realm of luxury is the pleasure of a fine dining room and a delightful Piano Lounge

### The Bayview and The Bayview Manor House Exceptional Suite Features

- » Principal rooms\* in all suites to have approximately 9' smooth painted ceilings, with bulkheads where required
- » Solid core entry door with stained finish and chrome lever hardware
- » Raised paneled interior swing or sliding doors with brushed nickel lever hardware on all hinged doors, as per plan
- » Awning windows with sill throughout
- » Individually controlled Heat Pump HVAC system for on-demand heating and air conditioning
- » Approximately 5" baseboard and 2" door and window casing
- » Raised paneled swing or frameless mirrored sliding closet doors in bedroom(s), as per plan
- » All interior walls primed and painted in latex off-white eggshell finish
- » Comfort height White Décora-style switches and receptacles throughout

- » Full-sized stacked front-loading washer and dryer on ceramic tile flooring
- » Residences feature individual hydro metering
- » Raised paneled sliding or swing closet doors in foyer, as per plan

### Exquisitely Appointed Kitchens and Breakfast Rooms

- » Your choice of 4 cabinet door profiles in a selection of 3 standard colours with matching wood header and crown moulding
- » Undermount stainless steel double-bowl sink with a fine selection of elegant solid granite countertops
- » Single lever kitchen faucet with integrated vegetable spray
- » Your choice of ceramic tile, mirrored or back-painted glass backsplash
- » Peninsula or island includes countertop overhang for seating
- » Designer line 4-piece stainless steel appliance package with slide-in ceramic top self-clearing stove and oven, integrated microwave hood fan, dishwasher, and French door counter depth refrigerator
- » Extra depth cabinet over refrigerator
- » French door(s) to breakfast or family room, as per plan

**Daniels**  
love where you live™

A joint venture community with Amica Mature Lifestyles™ Inc.

### Luxuriously Appointed Master Ensuites

- » Your choice of 4 vanity door profiles in a selection of 3 standard colours
- » Single or double undermount vanity sink as per plan with a selection of elegant marble countertops
- » Dual lever widespread chrome faucet
- » Decorative wall sconce(s) and decorative wall mirror over vanity
- » 2-piece comfort-height toilet
- » Selection of marble tiles for tub and shower wall surround and shower base
- » Where plan shows separate tub and shower: 60" soaker tub with integrated skirt and marble tub surround; frameless clear glass shower enclosure with full-height marble shower surround, and 1 recessed waterproof pot light over shower
- » Where plan shows a tub only: 60" soaker tub with integrated skirt and full-height marble tub surround
- » Matching chrome bathroom accessories – towel bar, towel ring, and toilet tissue holder

### Finely Appointed Guest Baths

- » Your choice of 4 vanity door profiles in a selection of 3 standard colours
- » Undermount vanity sink with a selection of elegant marble countertops
- » Dual lever chrome faucet
- » Decorative wall sconce(s) and beveled wall mirror over vanity
- » 2-piece comfort-height toilet
- » Where plan shows separate tub and shower: 60" soaker tub with integrated skirt and marble tub surround, frameless clear glass shower enclosure with full-height marble shower surround, and 1 recessed waterproof pot light over shower
- » Where plan shows a tub only: 60" soaker tub with integrated skirt and full-height marble tub surround
- » Where plan shows shower only; frameless clear glass shower enclosure with full-height marble shower surround and 1 recessed waterproof pot light over shower

- » Chrome bathroom accessories – towel bar, towel ring, and toilet tissue holder

### Elegant Powder Rooms (where applicable)

- » Undermount vanity sink with selection of solid marble countertops, as per plan
- » Dual lever chrome faucet
- » 2-piece comfort-height toilet
- » Decorative wall sconce(s) and beveled wall mirror over vanity
- » Chrome bathroom accessories – towel ring and toilet tissue holder

### Luxurious Flooring Finishes

- » Selection of pre-finished engineered hardwood flooring in living/dining room, family room, den and library
- » Selection of 40 oz. plush nylon or berber broadloom with super white underpad in bedroom(s)
- » A selection of porcelain tile flooring in the kitchen and breakfast room
- » A selection of marble flooring in the master ensuite
- » A selection of porcelain tile flooring in the guest bathroom and powder room
- » Your choice of marble, porcelain tile or pre-finished engineered hardwood in the foyer

### Balcony, Terrace and Patio Features

- » Underside of all balconies and terraces to have a smooth parged finish
- » Trimmed sliding glass door(s) with screen door to balconies, terraces, and patios
- » Poured concrete finish on all balconies and pavers on walk-out patios and terraces
- » Switched exterior wall sconce
- » Exterior receptacles on all balconies, terraces, and patios

### Electrical

- » Category 5 voice & data wiring and RG6 coaxial cable wiring in kitchen, living room, great room, den, library, family room and all bedroom(s)
- » Pot lights in kitchen and capped switched ceiling outlets over kitchen peninsula or island, as per plan
- » Valance and lighting under wall cabinets
- » 1 capped switched ceiling outlet in breakfast area or family room, as per plan
- » Potlight(s), in master ensuite bathroom
- » 1 capped switched ceiling outlet in the bedroom(s), foyer and dining room
- » 1 switched wall outlet in living room, great room, family room, den and library

### Security

- » Resident security card access throughout all common areas
- » Residents enjoy private underground parking
- » Rough-in for intrusion alarm system with front door and balcony, terrace/patio door contacts

\* Principal Rooms include living/dining room, great room, den, library and bedroom(s)

Tarion Warranty Program. Warranty for new construction.

Please note: Prices and specifications are subject to change without notice. All areas and stated room dimensions are approximate. Floor area measured in accordance with Tarion. Actual living area will vary from floor area stated. Builder may substitute materials for those provided in the plans and specifications provided such materials are of a quality equal to or better than the material provided for in the plans and specifications. Decorative and upgraded items displayed in the furnished model suites, vignettes and sales office are for display purposes only and are not included in the purchase price. Floors and specific finishes will depend on Vendor's décor packages as selected.  
E. & O.E. – February 2008



# THE BAYVIEW

TERRACED CONDOMINIUM RESIDENCES

## AGENTS' PREVIEW PRICING

February 26, 2008 – One-Day-Only Sale

(Subject to Availability)

MODEL	TYPE	FLOORS	APPROXIMATE SUITE SIZE	EXPOSURE	PREVIEW PRICES FROM:	SPECIAL BROKER PRICES FROM*
The Gosford	1 Bedroom + Den	1	698 sq. ft.	East	\$383,000	\$373,900
The Winfield	1 Bedroom + Den	3-9	786 sq. ft.	North	\$417,000	\$407,900
The Carriagewalk	1 Bedroom + Den	3-9	808 sq. ft.	North West	\$420,000	\$419,900
The Henley	1 Bedroom + Den	3,4,6	806 sq. ft.	West	\$438,000	\$428,900
The Derby	1 Bedroom + Den	3-8	849 sq. ft.	West	\$450,000	\$449,900
The Bennington	2 Bedroom	3-4	850 sq. ft.	West	\$483,000	\$473,900
The Fernhall	2 Bedroom	6	864 sq. ft.	East	\$494,000	\$484,900
The Shire	2 Bedroom + Media	8	971 sq. ft.	East	\$562,000	\$552,900
The Glendon	2 Bedroom	3-9	1065 sq. ft.	North East	\$607,000	\$597,900
The Bradbury	2 Bedroom	5	1029 sq. ft.	East	\$607,000	\$597,900
The Langdale	2 Bedroom + Den	5	1030 sq. ft.	West	\$622,000	\$612,900
The Dundurn	2 Bedroom + Media	9	1260 sq. ft.	South West	\$607,000	\$687,900
The Briarhill	2 Bedroom	1-4	1355 sq. ft.	South West South East	\$727,000	\$717,900
The Charlton	2 Bedroom + Library	2-7	1358 sq. ft.	East	\$744,000	\$734,900
The Aynsley	2 Bedroom	2-4	1413 sq. ft.	East	\$773,000	\$763,900
The Melford	2 Bedroom + Den	1-4	1459 sq. ft.	South	\$810,000	\$800,900
The Fenton	2 Bedroom	6	1437 sq. ft.	South East	\$820,000	\$810,900
The Grange	2 Bedroom	7	1550 sq. ft.	South East	\$882,000	\$872,900
The Chedingham	2 Bedroom + Library	8	1494 sq. ft.	South West	\$897,000	\$887,900
The Faircourt	2 Bedroom + Library	9	1546 sq. ft.	South East	\$927,000	\$917,900
The Haddington	2 Bedroom + Library + Den	8	1679 sq. ft.	South East	\$1,017,000	\$1,007,900
The Glenridge	2 Bedroom + Library	6	1781 sq. ft.	South West	\$1,095,000	\$1,085,900
The Southdale	2 Bedroom + Library + Family room	5	1917 sq. ft.	South East	\$1,167,000	\$1,157,900
The Hartford	2 Bedroom + Library + Family room	7	2087 sq. ft.	South West	\$1,270,000	\$1,269,900
The Barrington	2 Bedroom + Library + Family room	5	2157 sq. ft.	South West	\$1,321,000	\$1,311,900

### Finishing Appointments

All suites feature 9' ceiling heights in Living/Dining room, Great Room, Den, Library and Bedroom(s). Pre-finished, engineered hardwood flooring in Living/Dining Room, Family Room, Den and Library. Beautifully appointed kitchens with granite countertops, choice of ceramic tile, mirror or back-painted backsplash and designer line 4-piece stainless steel appliance package.

### Building Features

An intimate residence inspired by French Provincial Architecture offers a host of private amenities designed by world renowned designer Brian Gluckstein. Amenities include a grand two-storey Lobby with an Executive Concierge and a Resident Services Director; a formal Library; A Home Theatre, Party Room and Outdoor Terrace are designed to be the ultimate entertainment venue. A fitness studio featuring state-of-the-art equipment. Plus, residents will enjoy the five-star inspired services of neighboring Amica at Bayview Gardens residence featuring lavish Luxura™ Spa with indoor pool, dining room, piano lounge and much more.

<p>Deposit Structure \$4,000 with offer Balance of 5% in 30 days 5% in 90 days 5% in 365 days</p> <p>Occupancy Commencing: August 2008</p> <p>1 Parking Space: Included in Purchase Price 1 Locker: Included in Purchase Price</p>	<p>Maintenance Approximately \$0.54 per square foot (includes heat, air conditioning, water, building insurance &amp; upkeep of common areas, hydro separately metered)</p> <p>Parking Maintenance fee - \$ 35.00/month Locker Maintenance fee - \$15.00/month</p> <p>Taxes Estimated at approximately 0.85% of Purchase Price Prices Include G.S.T.</p>
--	--

All prices, figures and materials are preliminary and are subject to change without notice.  
Exclusive Listing Brokerage Baker Real Estate Brokers Protected E. & O. E. February 26, 2008  
The Bayview Presentation Lounge 1, 416-221-1949 / www.bayview.ca





# THE BAYVIEW

TERRACE CONDOMINIUM RESIDENCES

## AGENTS' PREVIEW PRICING

February 26, 2008 – One-Day-Only Sale

(Subject to Availability)

MODEL	TYPE	FLOORS	APPROXIMATE SUITE SIZE	EXPOSURE	PREVIEW PRICES FROM:	SPECIAL BROKER PRICES FROM:
The Chedworth Manor	1 Bedroom	2-3	799 sq. ft.	North West / North East	\$428,900	\$418,900
The Edenridge Manor	1 Bedroom	2-3	841 sq. ft.	North	\$446,900	\$436,900
The Attingham Manor	2 Bedroom + Den	2-3	1194 sq. ft.	South	\$682,900	\$677,900
The Waterford Manor	2 Bedroom + Den	2-3	1417 sq. ft.	South East / South West	\$760,900	\$759,900

### Finishing Appointments

All suites feature 9' ceiling heights in Living/Dining room, Great Room, Den, Library and Bedroom(s). Pre-finished, engineered hardwood flooring in Living/Dining Room, Family Room, Den and Library. Beautifully appointed kitchens with granite countertops, choice of ceramic tile, mirror or back-painted backsplash and designer line 4-piece stainless steel appliance package.

### Building Features

An intimate residence inspired by French Provincial Architecture offers a host of private amenities designed by world renowned designed Brian Gluckstein. Amenities include a grand two-storey Lobby with an Executive Concierge and a Resident Services Director; a formal Library; A Home Theatre, Party Room and Outdoor Terrace are designed to be the ultimate entertainment venues. A fitness studio featuring state-of-the-art equipment. Plus, residents will enjoy the five-star inspired services of neighboring Amica at Bayview Gardens residence featuring lavish Luxura™ Spa with indoor pool a dining room, piano lounge and much more.

<p><b>Deposit Structure</b>            \$4,000 with offer            Balance of 5% in 30 days            5% in 90 days            5% in 365 days</p> <p><b>Occupancy Commencing:</b> August 2009</p> <p>1 Parking Space: Included in Purchase Price            1 Locker: Included in Purchase Price</p>	<p><b>Maintenance</b>            Approximately \$ 0.54 per square foot            (includes heat, air conditioning, water, building insurance &amp; upkeep of common areas, hydro separately metered)</p> <p><b>Parking Maintenance fee - \$ 35.00/month</b>  <b>Locker Maintenance fee - \$15.00/month</b></p> <p><b>Taxes</b>            Estimated at approximately 0.85% of Purchase Price            Prices Include G.S.T.</p>
---	--

All prices, figures and materials are preliminary and are subject to change without notice.  
Exclusive Listing Brokerage: Baker Real Estate Brokers (Protected F. 620) E. February 26, 2008  
The Bayview Presentation Lounge T. 416-221-1010 [www.thebayview.com](http://www.thebayview.com)

# The Gosford

Suite 1E

1 Bedroom + Den

698 sq.ft.

Outdoor Area - 54 sq.ft.

Total Area - 752 sq.ft.

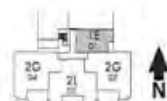
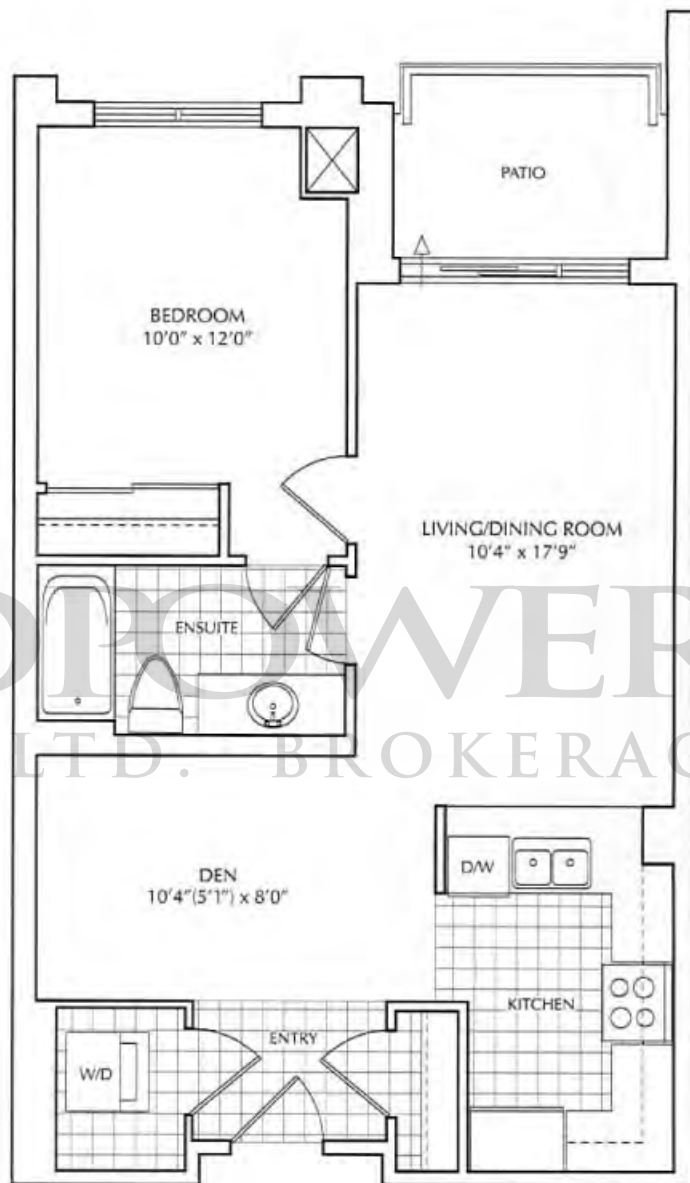


THE BAYVIEW

TERRACED CONDOMINIUM RESIDENCES

Daniels  
love where you live™

A joint venture community with Amica Mature Lifestyles™ Inc.



GROUND FLOOR

All areas and stated room dimensions are approximate. Floor area measured in accordance with Terion Warranty Corporation bulletin #22. Actual living area will vary from the stated floor area. The purchaser acknowledges that the actual unit purchased may be a reverse layout to the plan shown. Illustration is artist concept. E. & O. E.



# The Winfield

Suite 1B

1 Bedroom + Den

786 sq.ft.

Outdoor Area - 96 sq.ft.

Total Area - 882 sq.ft.

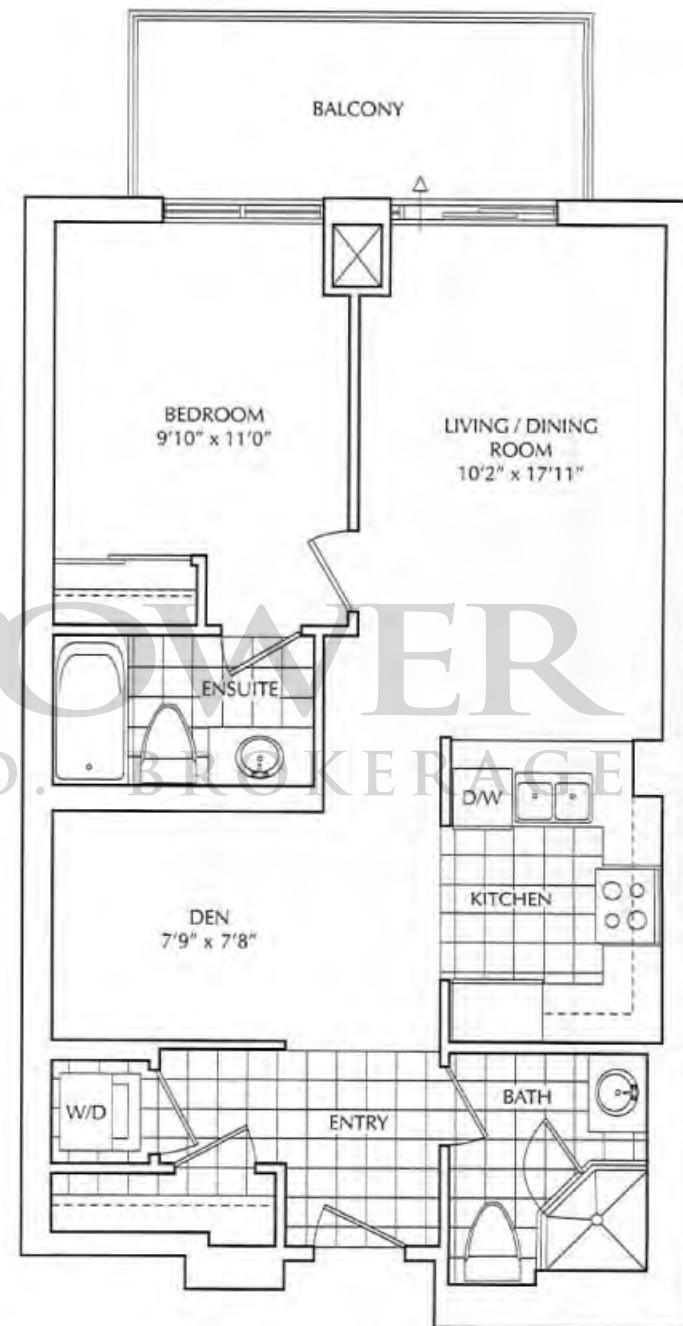


THE BAYVIEW

TERRACED CONDOMINIUM RESIDENCES

Daniels  
love where you live™

A joint venture community with Amica Mature Lifestyles™ Inc.



3rd - 4th FLOOR



5th - 9th FLOOR



All areas and stated room dimensions are approximate. Floor area measured in accordance with Terion Warranty Corporation bulletin #22. Actual living area will vary from the stated floor area. The purchaser acknowledges that the actual unit purchased may be a reverse layout to the plan shown. Illustration is artist concept. E. & O. E.

# The Carriagewalk

Suite 1A

1 Bedroom + Den

808 sq.ft.

Outdoor Area - 102 sq.ft.

Total Area - 910 sq.ft.

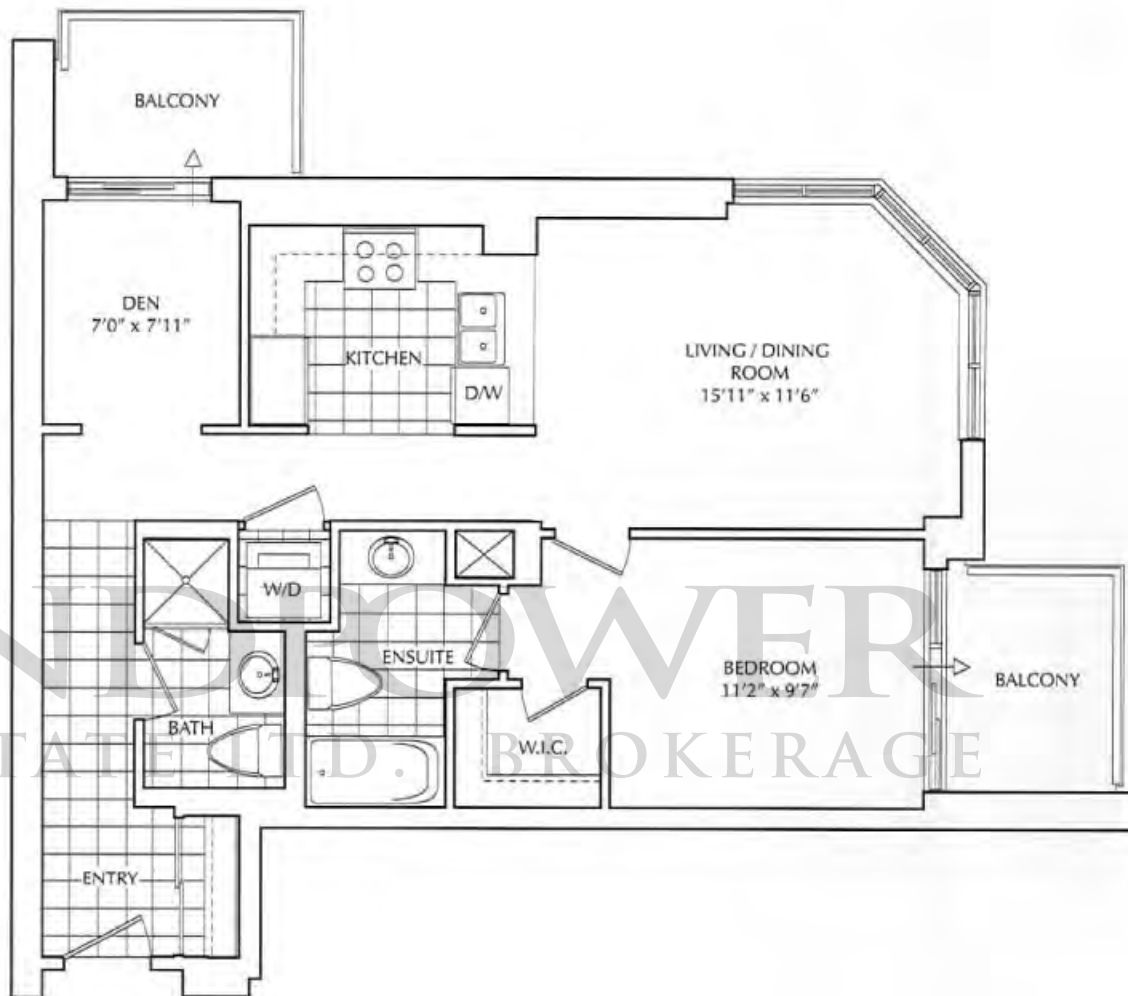


THE BAYVIEW

TERRACED CONDOMINIUM RESIDENCES

Daniels  
love where you live™

A joint venture community with Amica Mature Lifestyles™ Inc.



3rd - 4th FLOOR



5th - 9th FLOOR



All areas and stated room dimensions are approximate. Floor area measured in accordance with Tarion Warranty Corporation bulletin #22. Actual living area will vary from the stated floor area. The purchaser acknowledges that the actual unit purchased may be a reverse layout to the plan shown. Illustration is artist concept. E. & O. E.



# The Henley

Suite 1J

1 Bedroom + Den

806 sq.ft.

Outdoor Area - 62 sq.ft.

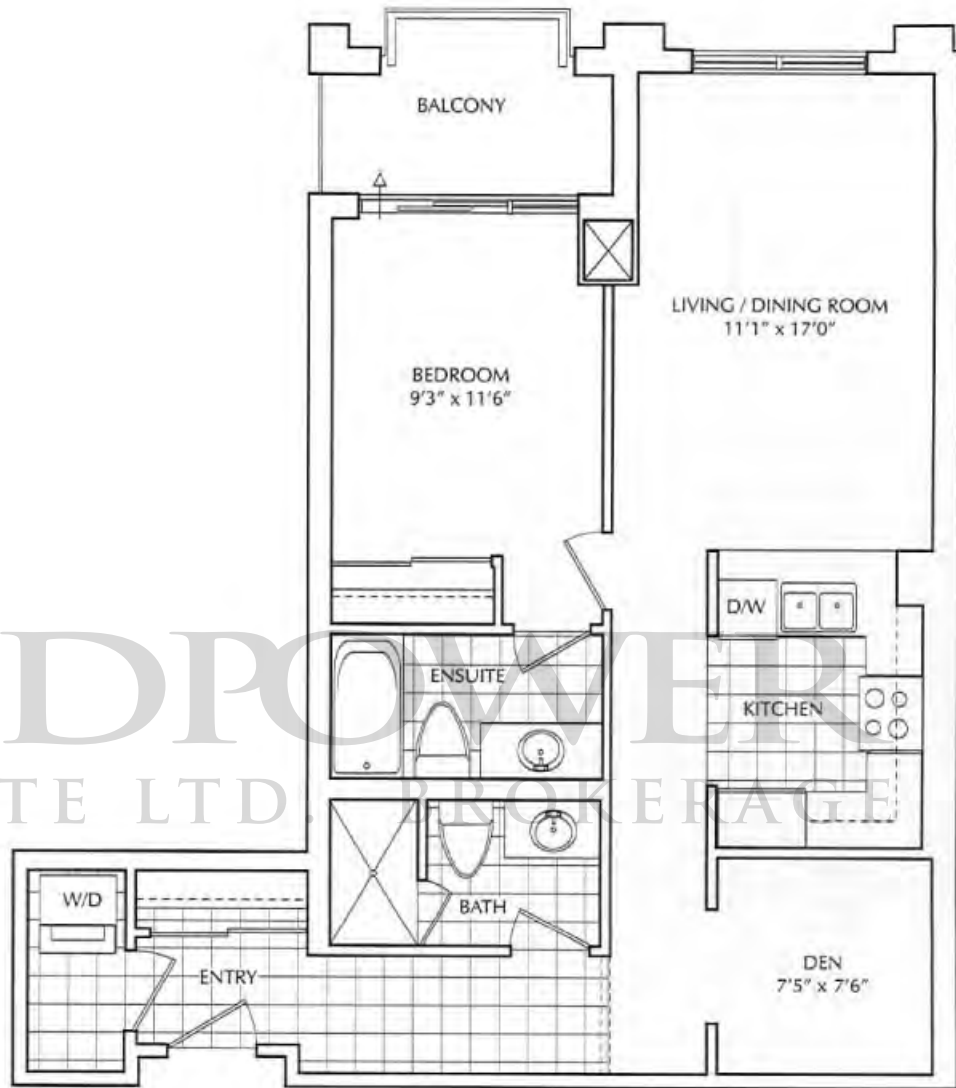
Total Area - 868 sq.ft.



**THE BAYVIEW**  
TERRACED CONDOMINIUM RESIDENCES

**Daniels**  
love where you live™

A joint venture community with Amica Mature Lifestyles™ Inc.



3rd, 4th & 5th FLOOR

All areas and stated room dimensions are approximate. Floor area measured in accordance with Terion Warranty Corporation bulletin #22. Actual living area will vary from the stated floor area. The purchaser acknowledges that the actual unit purchased may be a reverse layout to the plan shown. Illustration is artist concept. E. & O. E.

# The Derby

Suite 1D

1 Bedroom + Den

849 sq.ft.

Outdoor Area - 57 sq.ft.

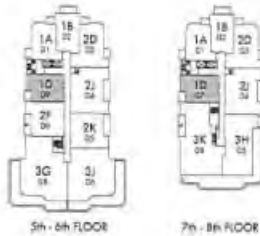
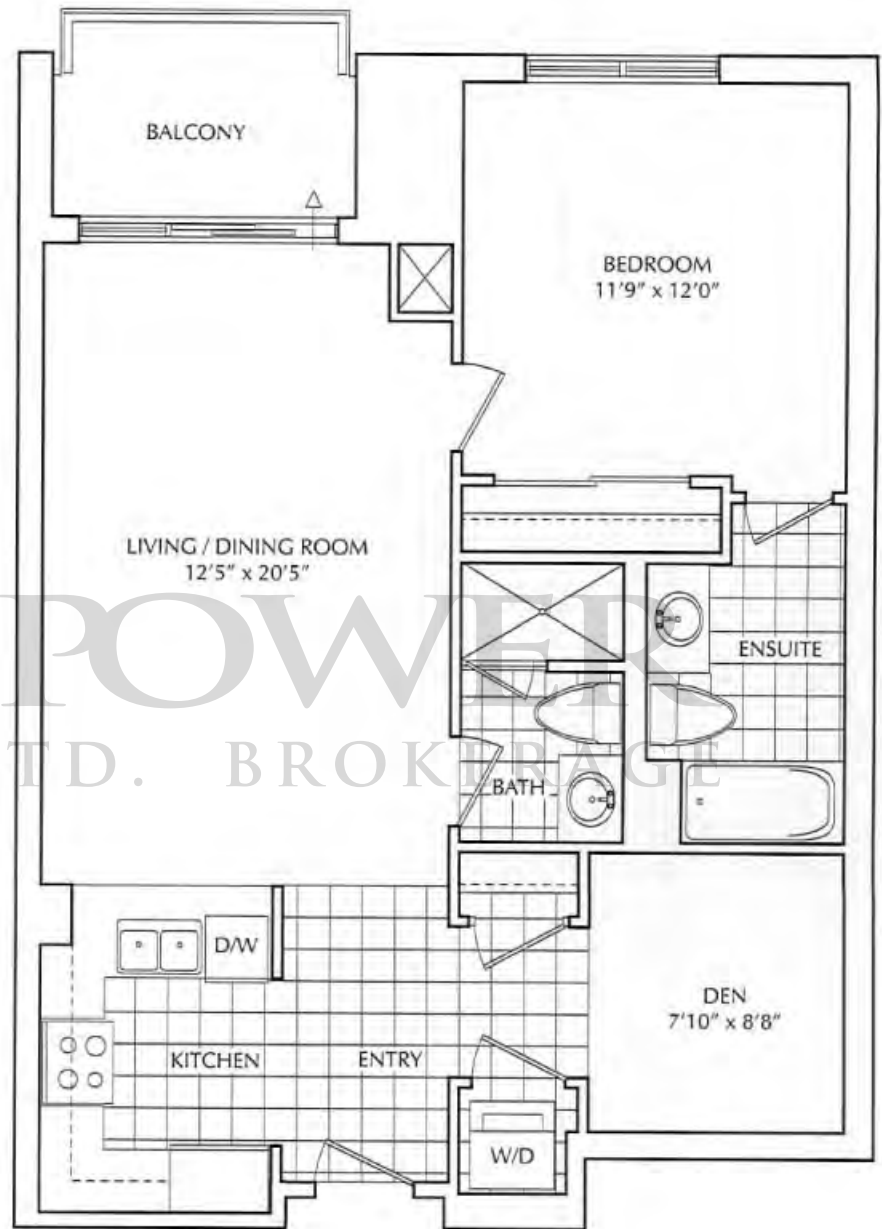
Total Area - 906 sq.ft.



**THE BAYVIEW**  
TERRACED CONDOMINIUM RESIDENCES

**Daniels**  
love where you live™

A joint venture community with Amica Mature Lifestyles™ Inc.



All areas and stated room dimensions are approximate. Floor area measured in accordance with Terion Warranty Corporation bulletin #22. Actual living area will vary from the stated floor area. The purchaser acknowledges that the actual unit purchased may be a reverse layout to the plan shown. Illustration is artist concept, E. & O. E.



# The Bennington

Suite 2E

2 Bedroom

850 sq.ft.

Outdoor Area - 62 sq.ft.

Total Area - 912 sq.ft.

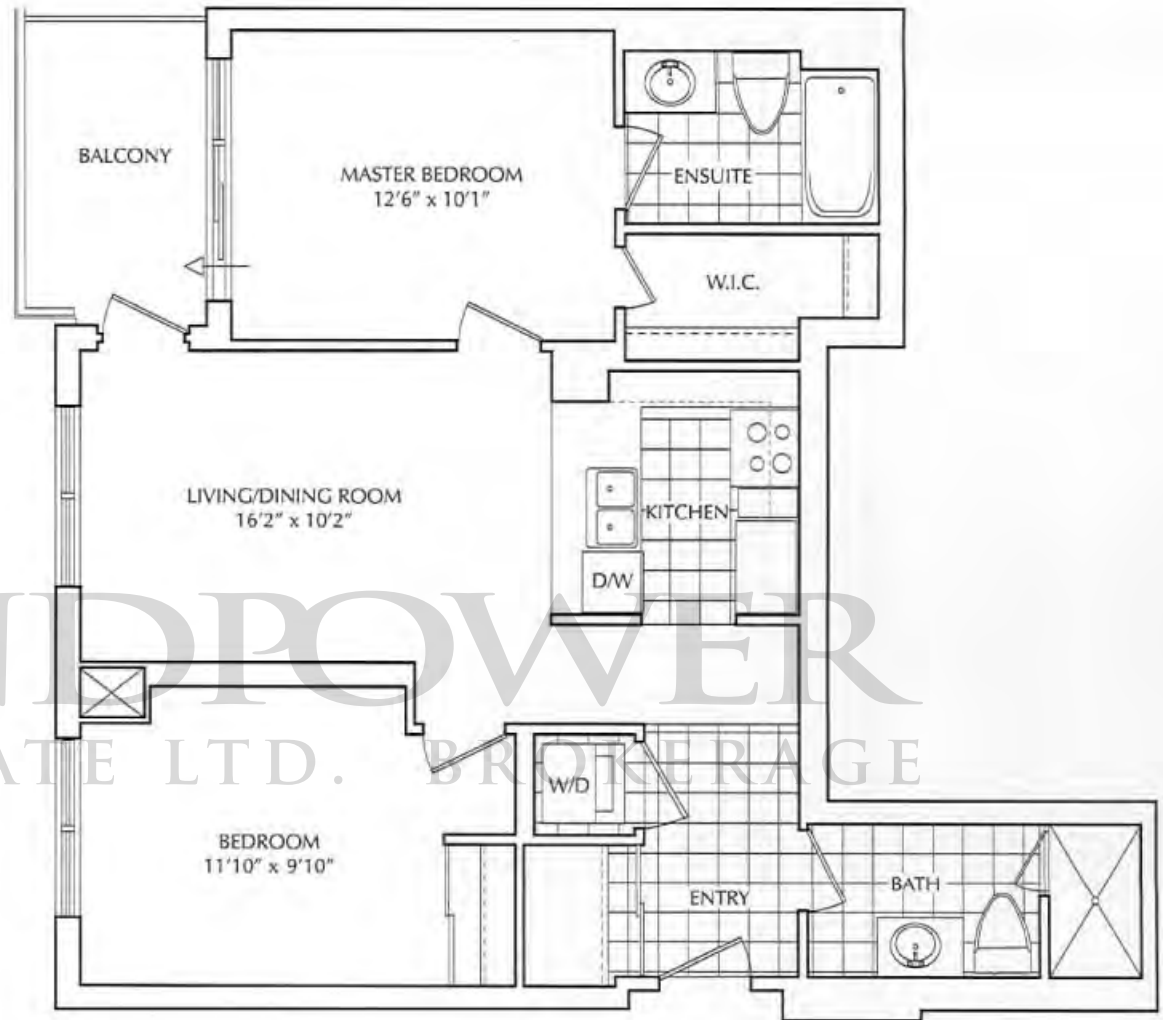


THE BAY VIEW

TERRACED CONDOMINIUM RESIDENCES

Daniels  
love where you live™

A joint venture community with Amica Mature Lifestyles™ Inc.



3rd - 4th FLOOR



All areas and stated room dimensions are approximate. Floor area measured in accordance with Tarion Warranty Corporation bulletin #22. Actual living area will vary from the stated floor area. The purchaser acknowledges that the actual unit purchased may be a reverse layout to the plan shown. Illustration is artist concept. E. & O. E.

# The Fernhall

Suite 2A

2 Bedroom

864 sq.ft.

Outdoor Area - 124 sq.ft.

Total Area - 988 sq.ft.

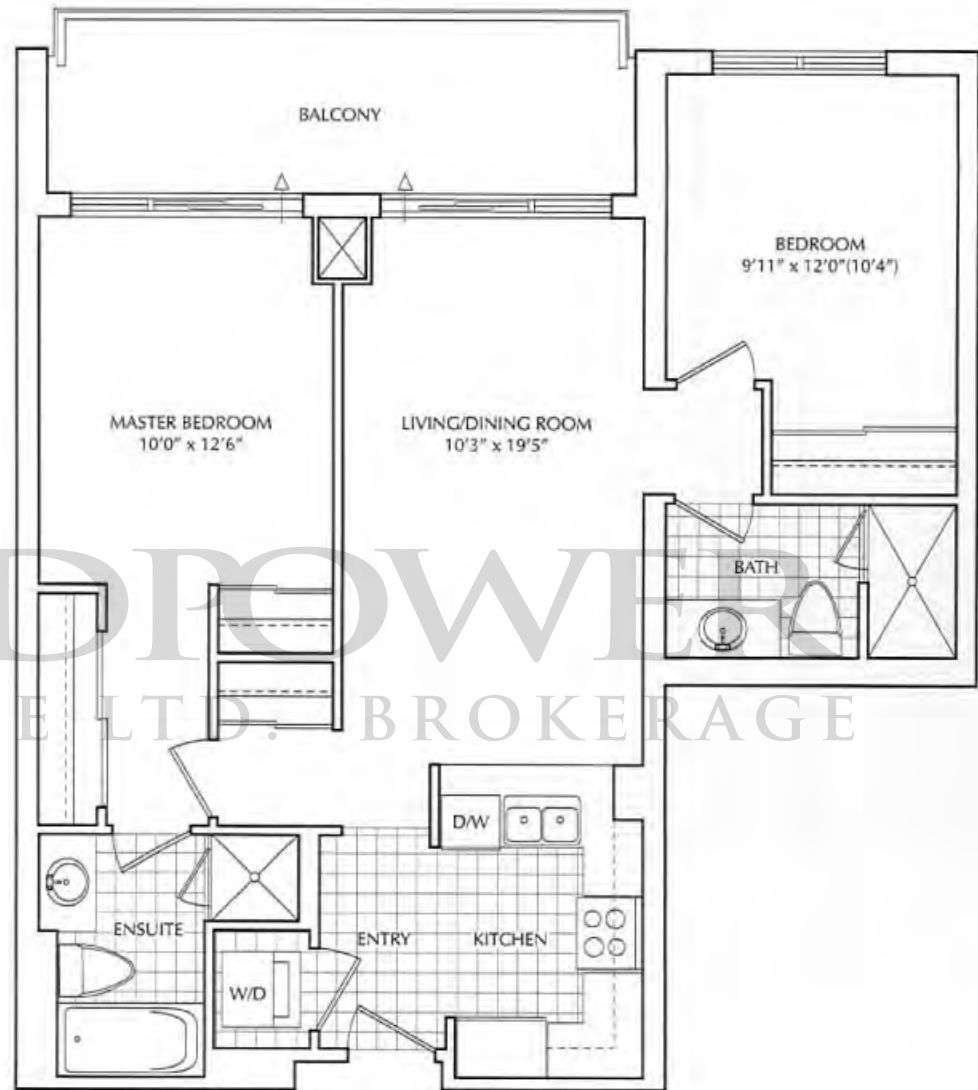


THE BAYVIEW

TERRACED CONDOMINIUM RESIDENCES

Daniels  
love where you live™

A joint venture community with Amica Mature Lifestyles™ Inc.



All areas and stated room dimensions are approximate. Floor area measured in accordance with Tarion Warranty Corporation bulletin #22. Actual living area will vary from the stated floor area. The purchaser acknowledges that the actual unit purchased may be a reverse layout to the plan shown. Illustration is artist concept. E & O. E.

# The Shire

Suite 2Q

2 Bedroom + Media

971 sq.ft.

Outdoor Area - 124 sq.ft.

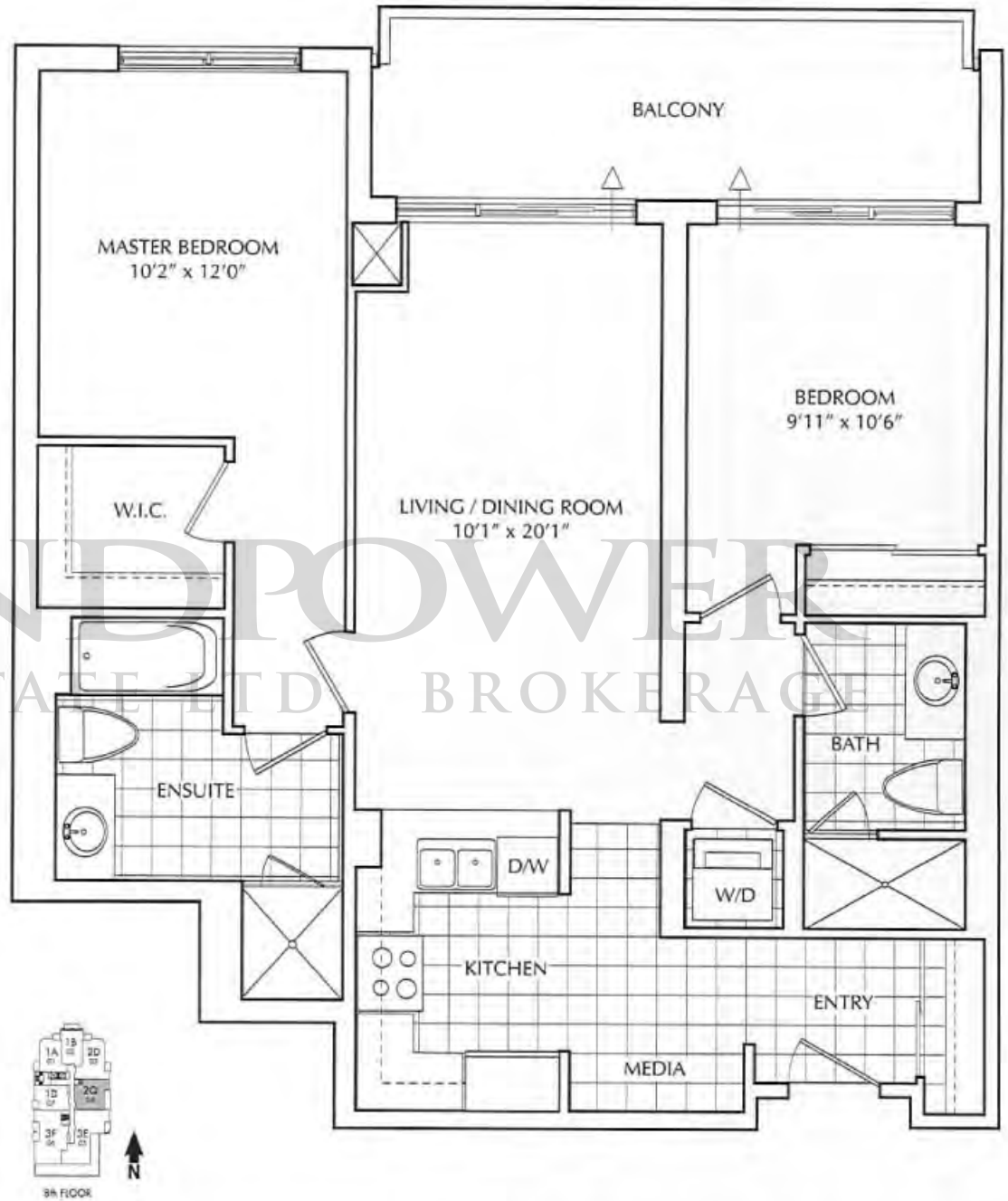
Total Area - 1095 sq.ft.



**THE BAY VIEW**  
TERRACED CONDOMINIUM RESIDENCES

**Daniels**  
love where you live™

A joint venture community with Amica Mature Lifestyles™ Inc.



All areas and stated room dimensions are approximate. Floor area measured in accordance with Terion Warranty Corporation bulletin #22. Actual living area will vary from the stated floor area. The purchaser acknowledges that the actual unit purchased may be a reverse layout to the plan shown. Illustration is artist concept. E. & O. E.



# The Glendon

Suite 2D

2 Bedroom

1065 sq.ft.

Outdoor Area - 104 sq.ft.

Total Area - 1169 sq.ft.

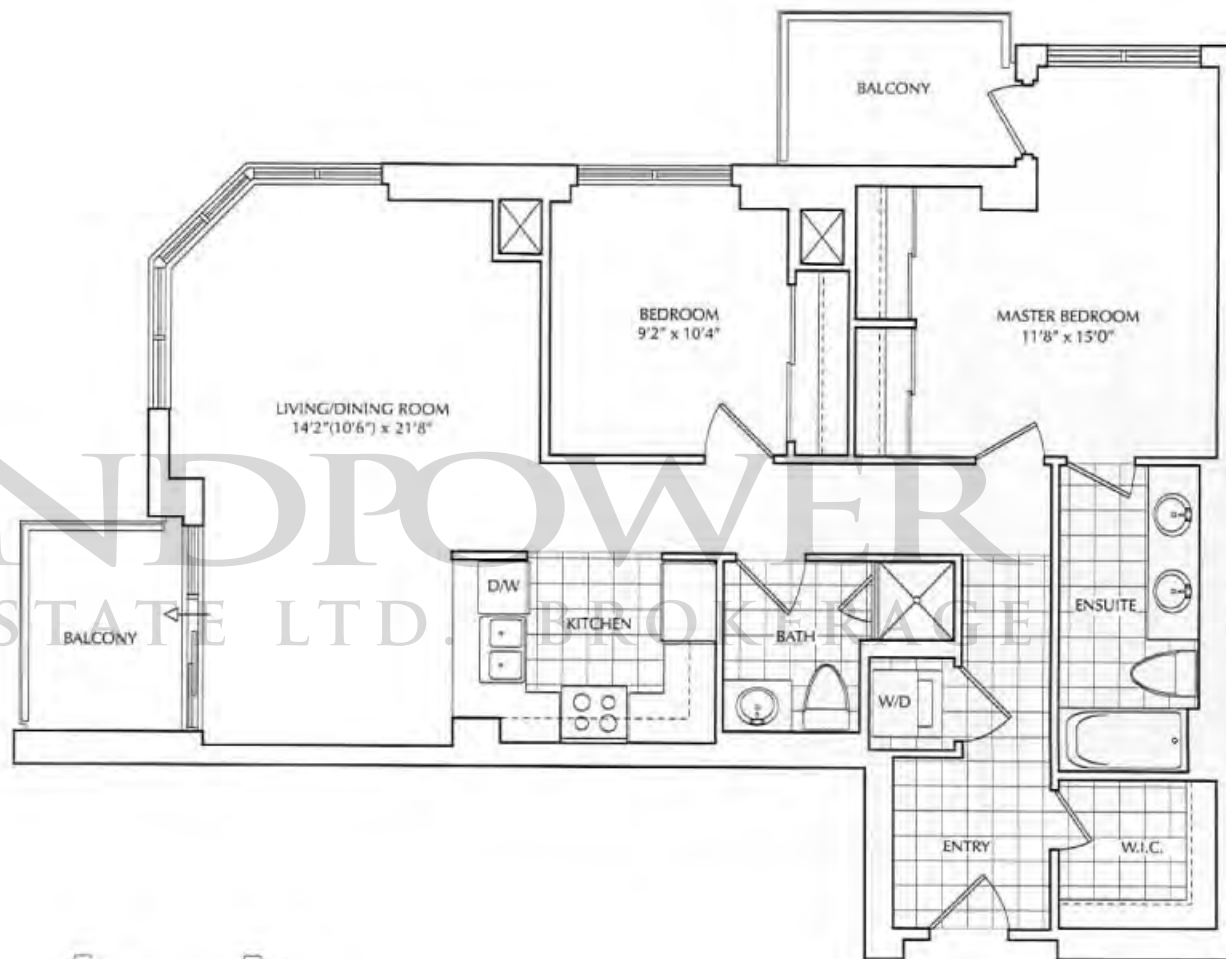


THE BAY VIEW

TERRACED CONDOMINIUM RESIDENCES

Daniels  
love where you live™

A joint venture community with Amica Mature Lifestyles™ Inc.



3rd - 4th FLOOR



5th - 9th FLOOR

All areas and stated room dimensions are approximate. Floor area measured in accordance with Tarion Warranty Corporation bulletin #22. Actual living area will vary from the stated floor area. The purchaser acknowledges that the actual unit purchased may be a reverse layout to the plan shown. Illustration is artist concept. E. & D. E.

# The Bradbury

Suite 2K

2 Bedroom

1029 sq.ft.

Outdoor Area - 124 sq.ft.

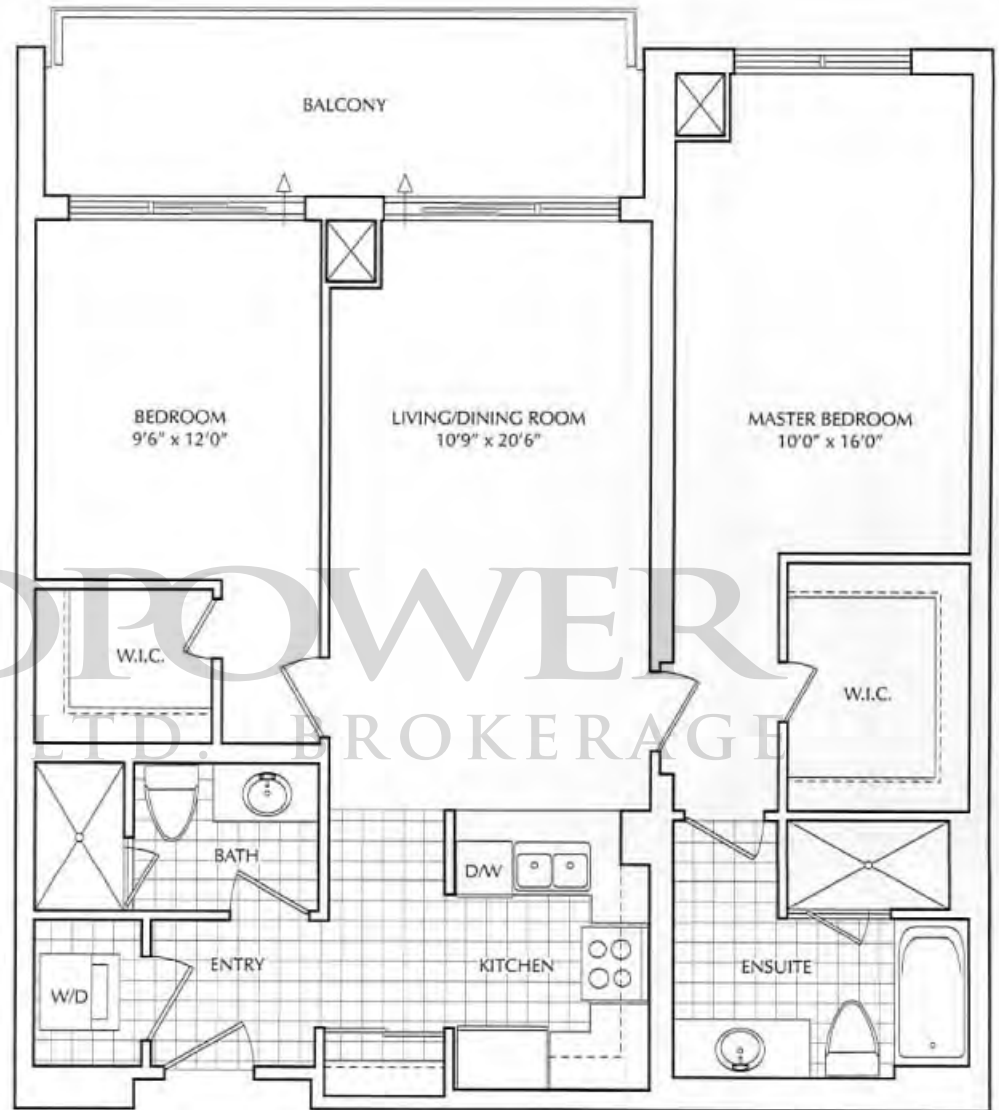
Total Area - 1153 sq.ft.



**THE BAYVIEW**  
TERRACED CONDOMINIUM RESIDENCES

**Daniels**  
love where you live™

A joint venture community with Amica Mature Lifestyles™ Inc.



All areas and stated room dimensions are approximate. Floor area measured in accordance with Tarion Warranty Corporation bulletin #22. Actual living area will vary from the stated floor area. The purchaser acknowledges that the actual unit purchased may be a reverse layout to the plan shown. Illustration is artist concept. E. & O. E.

# The Langdale

Suite 2F

2 Bedroom + Den

1030 sq.ft.

Outdoor Area - 62 sq.ft.

Total Area - 1092 sq.ft.

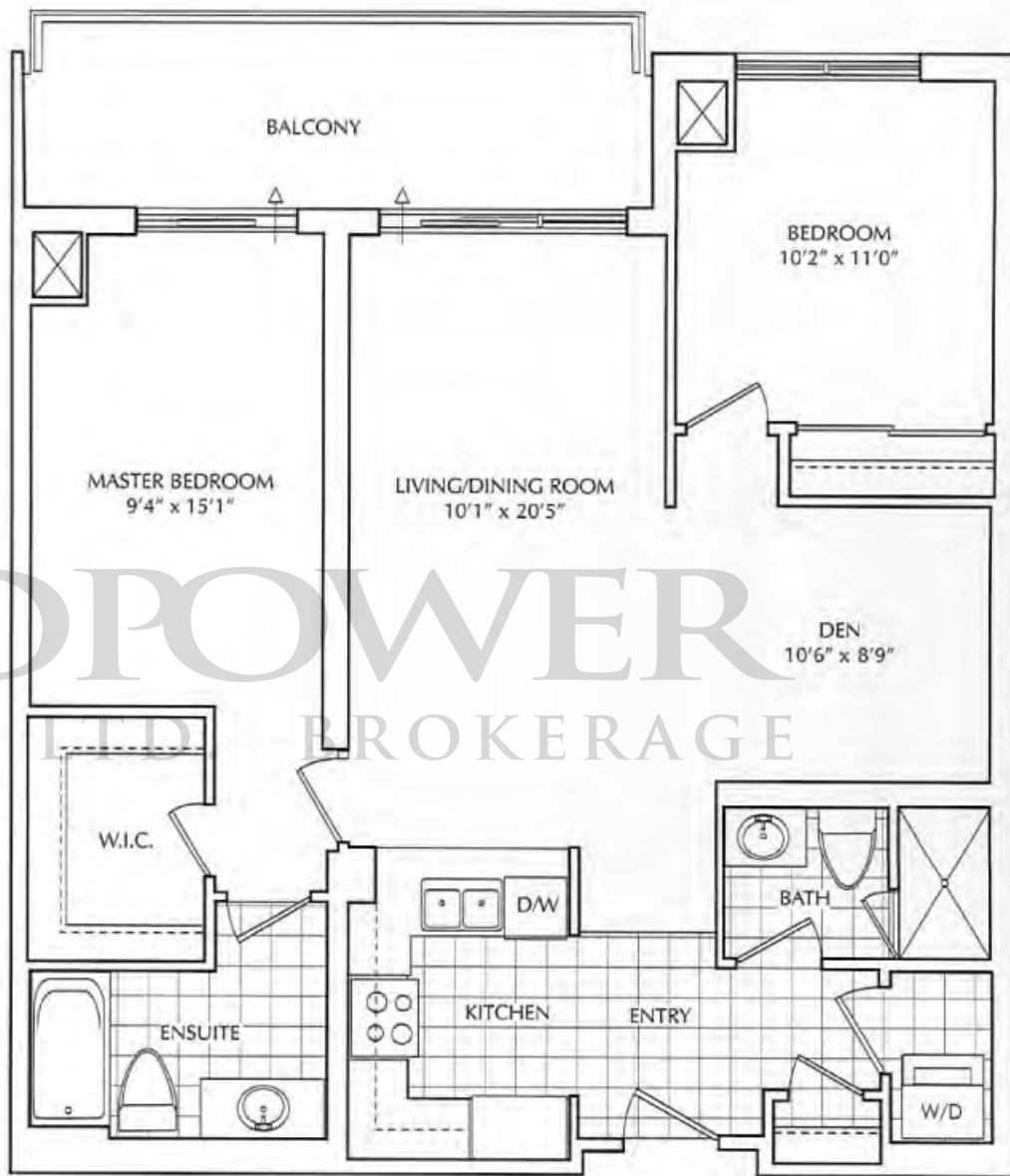


THE BAY VIEW

TERRACED CONDOMINIUM RESIDENCES

Daniels  
love where you live™

A joint venture community with Amica Mature Lifestyles™ Inc.



5th FLOOR

All areas and stated room dimensions are approximate. Floor area measured in accordance with Terion Warranty Corporation bulletin #22. Actual living area will vary from the stated floor area. The purchaser acknowledges that the actual unit purchased may be a reverse layout to the plan shown. Illustration is artist concept. E. & O. E.



# The Dundurn

Suite 2N

2 Bedroom + Media

1259 sq.ft.

Outdoor Area - 322 sq.ft.

Total Area - 1581 sq.ft.



THE BAY VIEW

TERRACED CONDOMINIUM RESIDENCES

Daniels  
love where you live™

joint venture community with Amica Mature Lifestyles™ Inc.



9th FLOOR

All areas and stated room dimensions are approximate. Floor area measured in accordance with Terion Warranty Corporation bulletin #22. Actual living area will vary from the stated floor area. The purchaser acknowledges that the actual unit purchased may be a reverse layout to the plan shown. Illustration is artist concept. E. & O. E.

# The Briarhill

Suite 2G

2 Bedroom

1355 sq.ft.

Outdoor Area - 159 sq.ft.\*

Total Area - 1514 sq.ft.

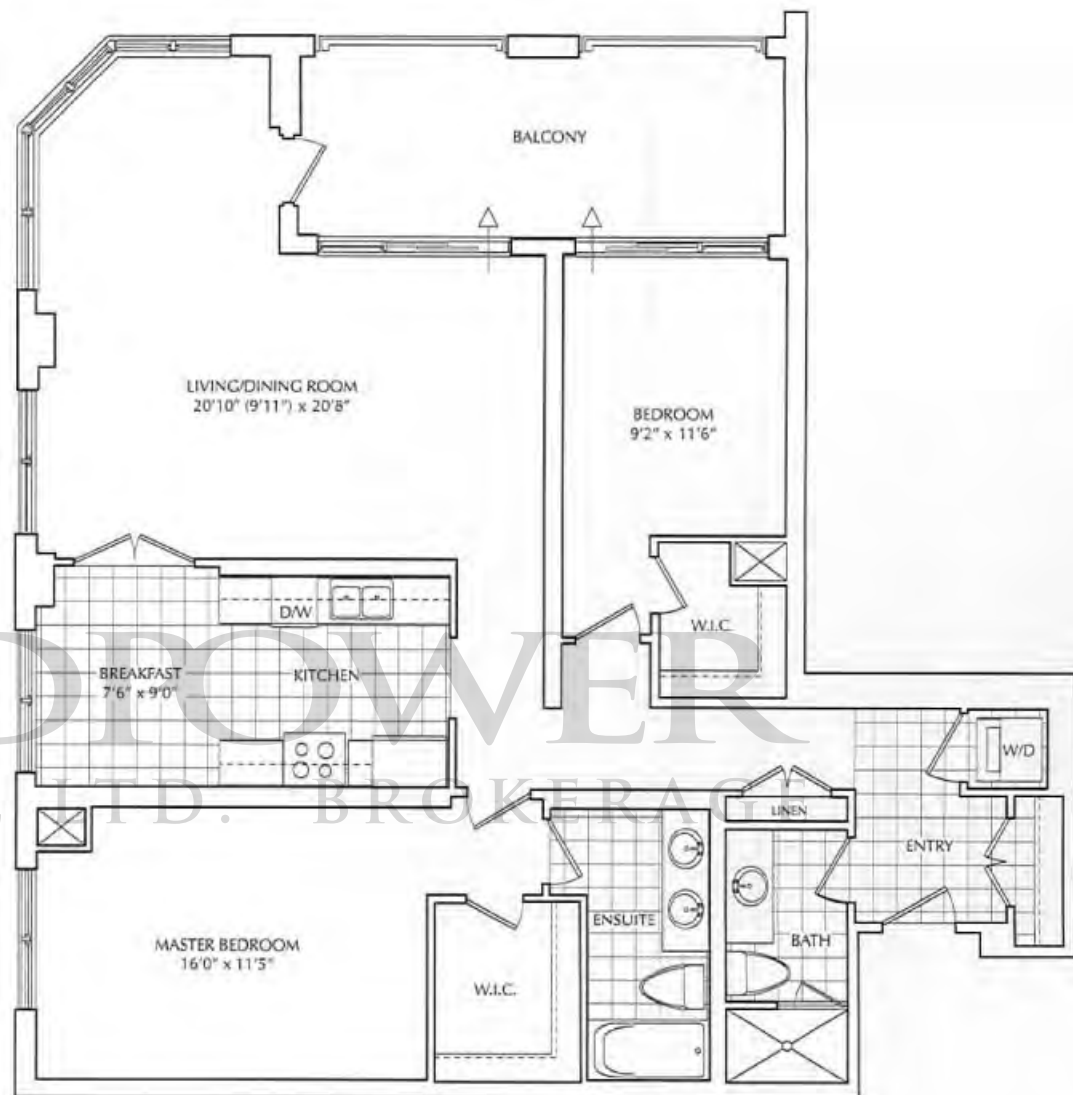


THE BAYVIEW

TERRACED CONDOMINIUM RESIDENCES

Daniels  
love where you live™

A joint venture community with Amica Mature Lifestyles™ Inc.



\*Total outdoor area applies to 2nd, 3rd and 4th floors only.

All areas and stated room dimensions are approximate. Floor area measured in accordance with Tarion Warranty Corporation bulletin #22. Actual living area will vary from the stated floor area. The purchaser acknowledges that the actual unit purchased may be a reverse layout to the plan shown. Illustration is artist concept. E. & O. E.

# The Charlton

Suite 2j

2 Bedroom + Library

1358 sq.ft.

Outdoor Area - 124 sq.ft.\*

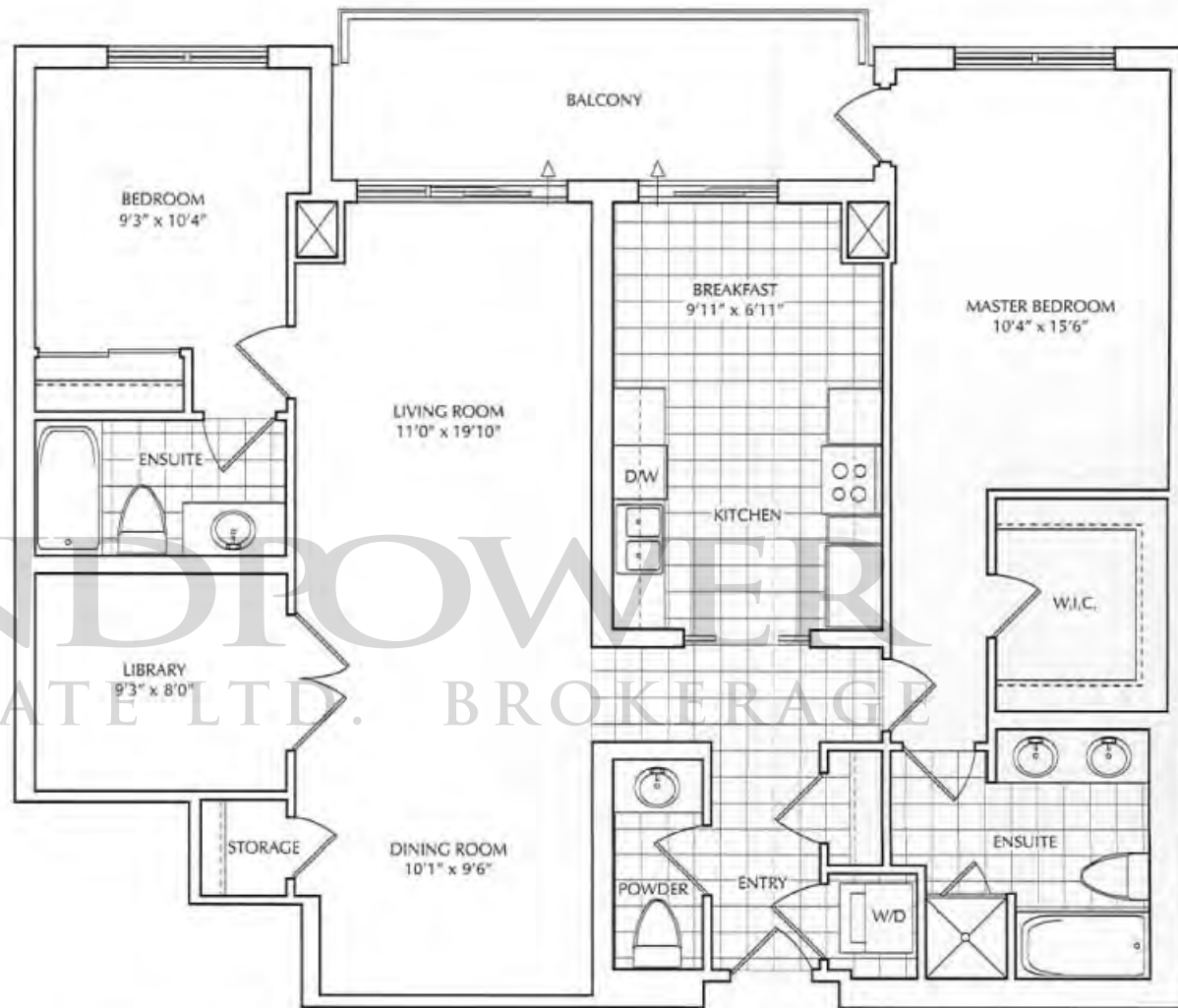
Total Area - 1482 sq.ft.



**THE BAYVIEW**  
TERRACED CONDOMINIUM RESIDENCES

**Daniels**  
love where you live™

A joint venture community with Amica Mature Lifestyles™ Inc.



\*Total outdoor area applies to the 3rd - 7th floors only.

All areas and stated room dimensions are approximate. Floor area measured in accordance with Tarion Warranty Corporation bulletin #22. Actual living area will vary from the stated floor area. The purchaser acknowledges that the actual unit purchased may be a reverse layout to the plan shown. Illustration is artist concept. E. & O. E.



# The Aynsley

Suite 2S

2 Bedroom

1413 sq.ft.

Outdoor Area - 124 sq.ft.\*

Total Area - 1537 sq.ft.

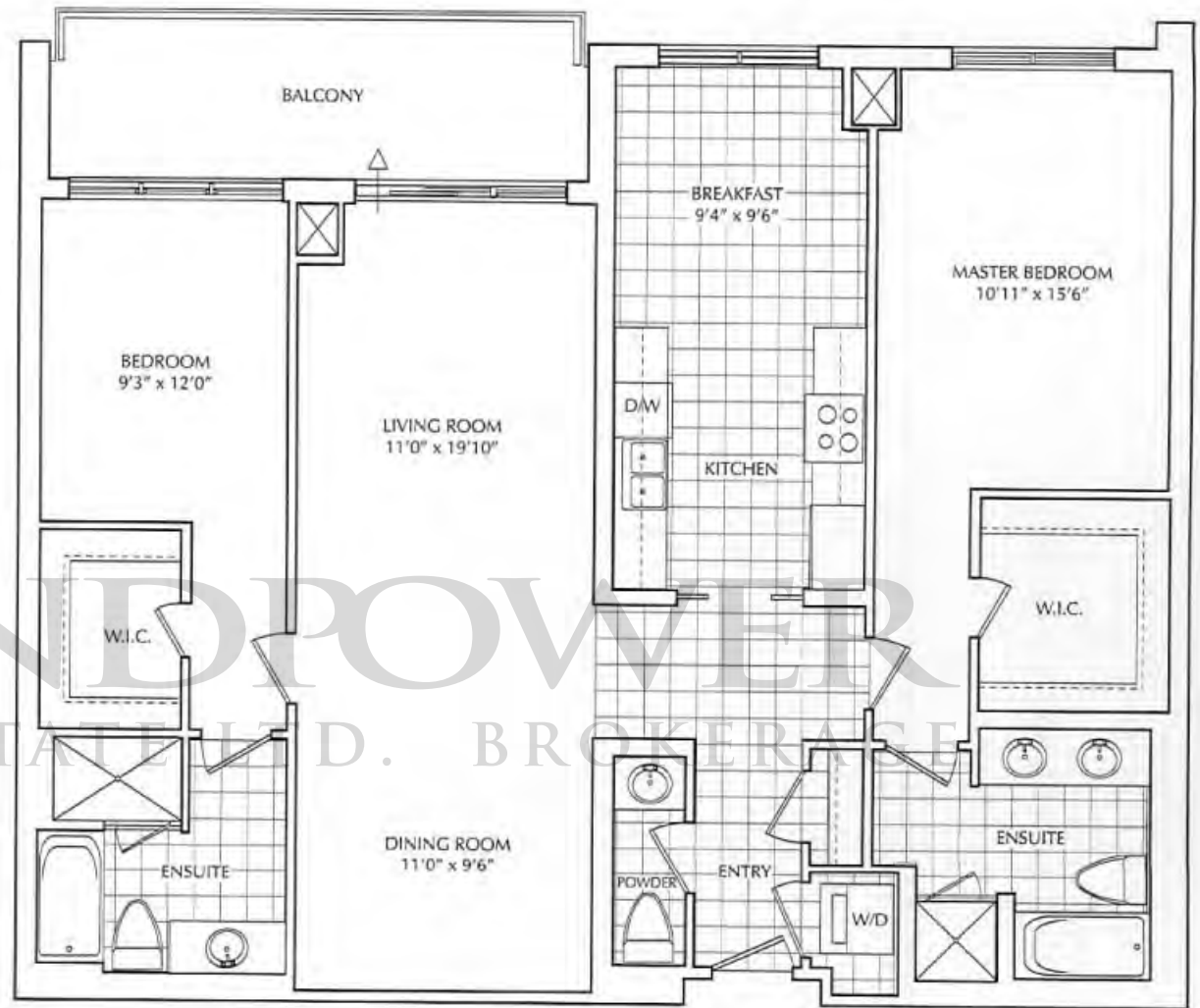


**THE BAY VIEW**

TERRACED CONDOMINIUM RESIDENCES

**Daniels**  
love where you live™

A joint venture community with Amica Mature Lifestyles™ Inc.



\*Total outdoor area applies to the 3rd and 4th floors only.

All areas and stated room dimensions are approximate. Floor area measured in accordance with Tarion Warranty Corporation bulletin #22. Actual living area will vary from the stated floor area.

The purchaser acknowledges that the actual unit purchased may be a reverse layout to the plan shown. Illustration is artist concept. E & O. E.

# The Melford

Suite 2L

2 Bedroom + Den

1459 sq.ft.

Outdoor Area - 164 sq.ft.

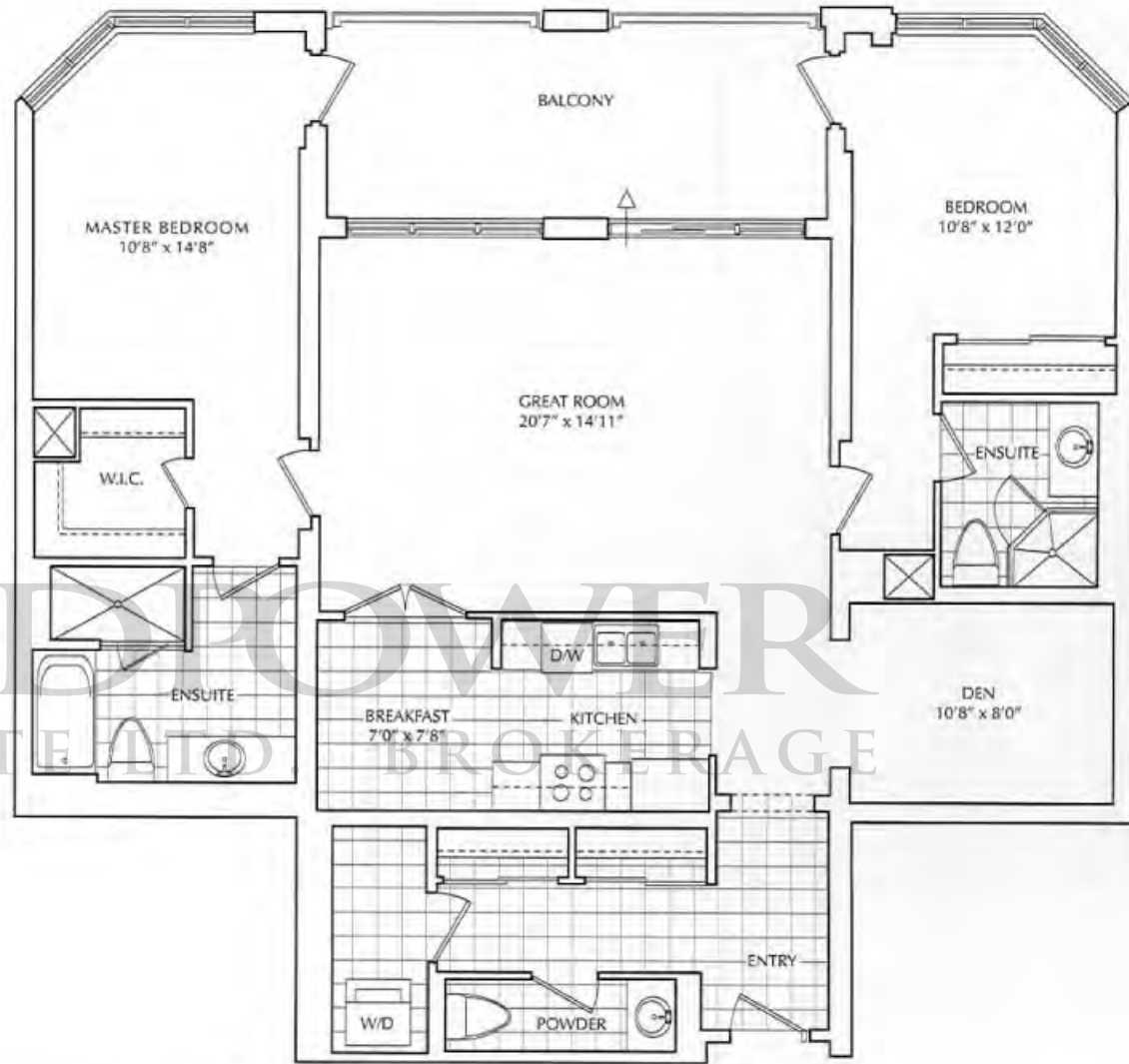
Total Area - 1623 sq.ft.



**THE BAYVIEW**  
TERRACED CONDOMINIUM RESIDENCES

**Daniels**  
love where you live™

A joint venture community with Amica Mature Lifestyles™ Inc.



\*Total outdoor area applies to the 3rd and 4th floors only.

All areas and stated room dimensions are approximate. Floor area measured in accordance with Torion Warranty Corporation bulletin #22. Actual living area will vary from the stated floor area. The purchaser acknowledges that the actual unit purchased may be a reverse layout to the plan shown. Illustration is artist concept. E. & O. E.

# The Fenton

Suite 3A

2 Bedroom

1437 sq.ft.

Outdoor Area - 499 sq.ft.

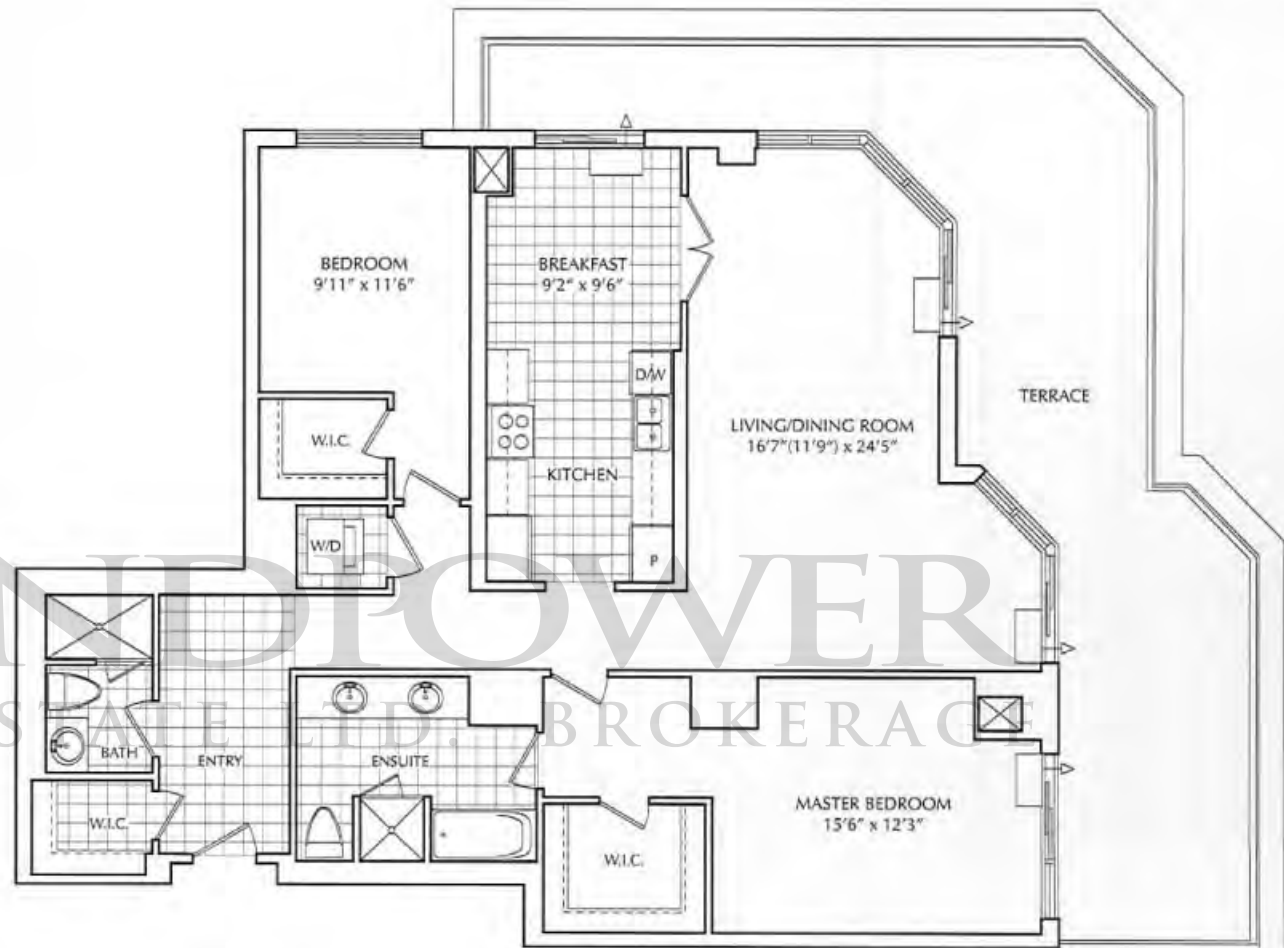
Total Area - 1936 sq.ft.



**THE BAY VIEW**  
TERRACED CONDOMINIUM RESIDENCES

**Daniels**  
love where you live™

A joint venture community with Amica Mature Lifestyles™ Inc.



All areas and stated room dimensions are approximate. Floor area measured in accordance with Tarion Warranty Corporation bulletin #22. Actual living area will vary from the stated floor area. The purchaser acknowledges that the actual unit purchased may be a reverse layout to the plan shown. Illustration is artist concept. E. & O. E.

# The Grange

Suite 3H

2 Bedroom + Family

1550 sq.ft.

Outdoor Area - 804 sq.ft.

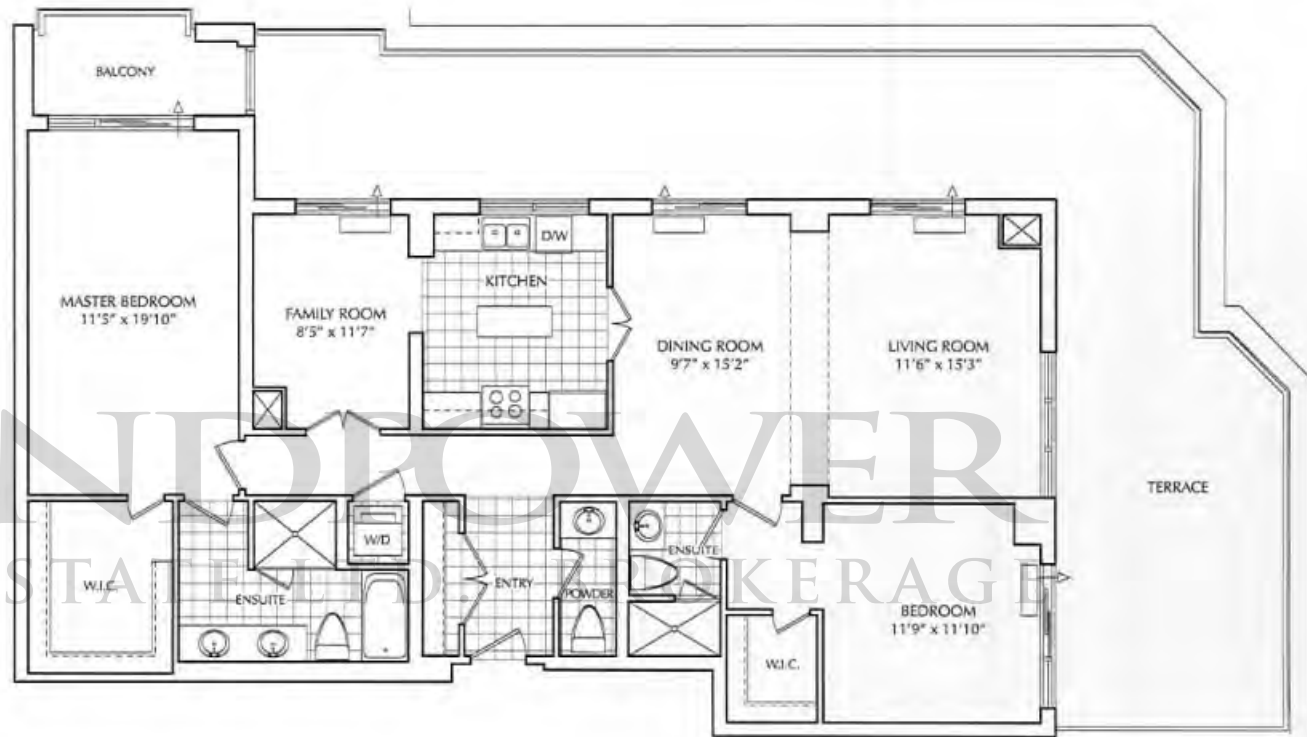
Total Area - 2354 sq.ft.



**THE BAY VIEW**  
TERRACED CONDOMINIUM RESIDENCES

**Daniels**  
love where you live™

A joint venture community with Amica Mature Lifestyles™ Inc.



All areas and stated room dimensions are approximate. Floor area measured in accordance with Torion Warranty Corporation bulletin #22. Actual living area will vary from the stated floor area. The purchaser acknowledges that the actual unit purchased may be a reverse layout to the plan shown. Illustration is artist concept. E. & O. E.



# The Chedingham

Suite 3F

2 Bedroom + Library

1494 sq.ft.

Outdoor Area - 413 sq.ft.

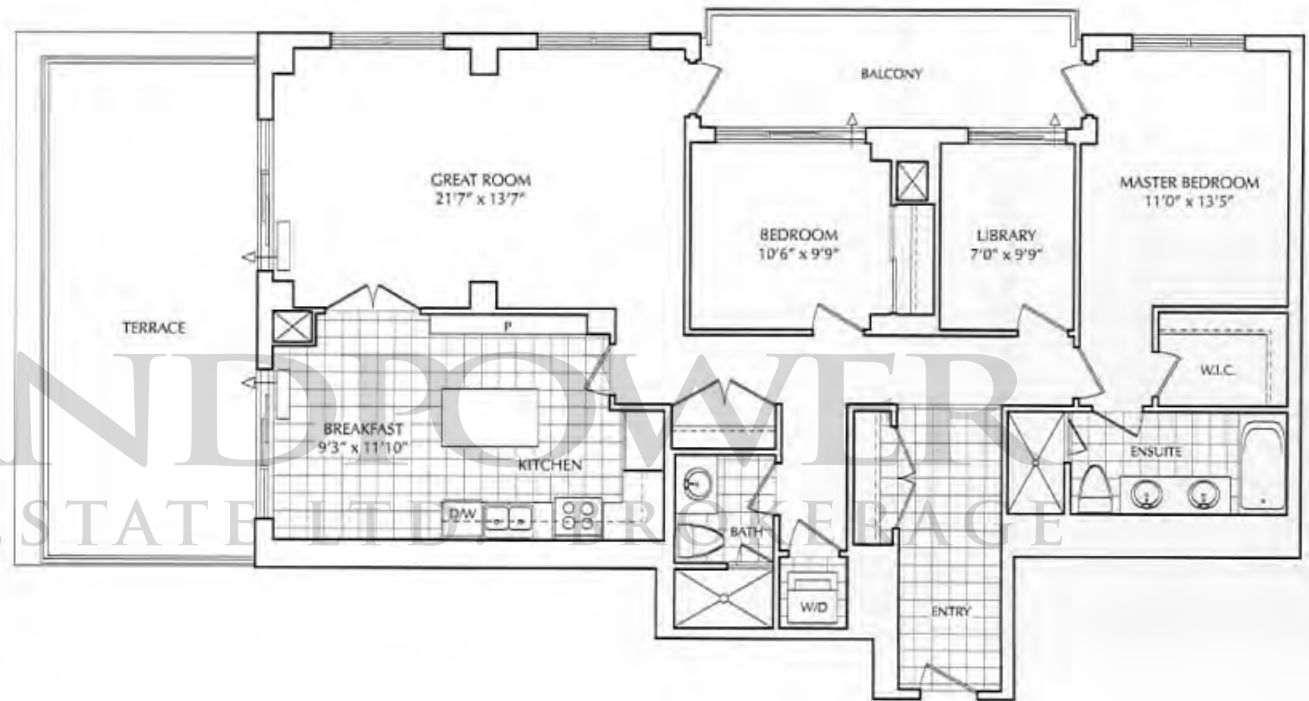
Total Area - 1907 sq.ft.



**THE BAY VIEW**  
TERRACED CONDOMINIUM RESIDENCES

**Daniels**  
love where you live™

A joint venture community with Amica Mature Lifestyles™ Inc.



All areas and stated room dimensions are approximate. Floor area measured in accordance with Torian Warranty Corporation bulletin #22. Actual living area will vary from the stated floor area. The purchaser acknowledges that the actual unit purchased may be a reverse layout to the plan shown. Illustration is artist concept. E. & O. E.

# The Faircourt

Suite 3D

2 Bedroom + Library

1546 sq.ft.

Outdoor Area - 241 sq.ft.

Total Area - 1787 sq.ft.

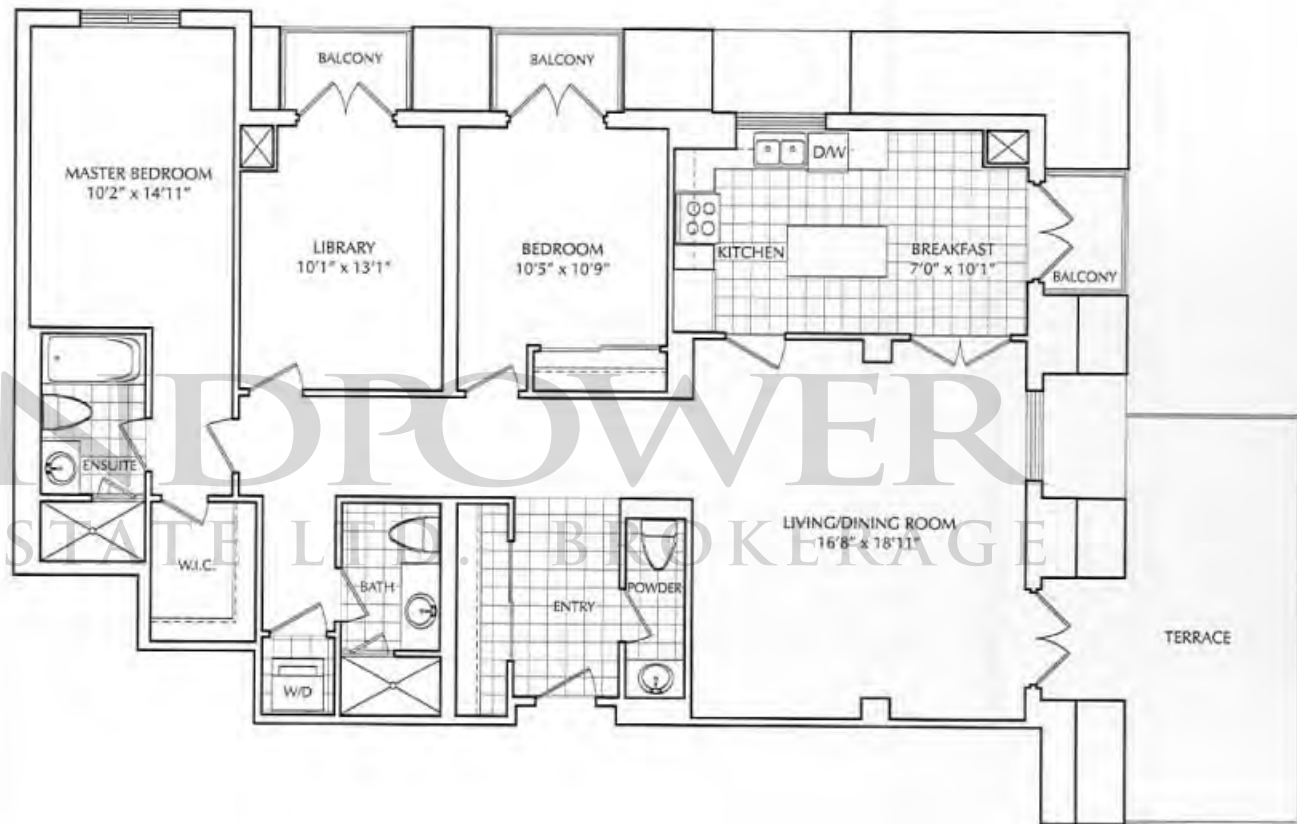


THE BAY VIEW

TERRACED CONDOMINIUM RESIDENCES

Daniels  
love where you live™

A joint venture community with Amica Mature Lifestyles™ Inc.



9th FLOOR

All areas and stated room dimensions are approximate. Floor area measured in accordance with Terlan Warranty Corporation bulletin #22. Actual living area will vary from the stated floor area. The purchaser acknowledges that the actual unit purchased may be a reverse layout to the plan shown. Illustration is artist concept. E. & D. E.

# The Haddington

Suite 3E

2 Bedroom + Library + Den

1679 sq.ft.

Outdoor Area - 737 sq.ft.

Total Area - 2416 sq.ft.



THE BAYVIEW

TERRACED CONDOMINIUM RESIDENCES

Daniels  
love where you live™

A joint venture community with Amica Mature Lifestyles™ Inc.



8th FLOOR



All areas and stated room dimensions are approximate. Floor area measured in accordance with Tarion Warranty Corporation bulletin #22. Actual living area will vary from the stated floor area. The purchaser acknowledges that the actual unit purchased may be a reverse layout to the plan shown. Illustration is artist concept. E. & O. E.

# The Glenridge

Suite 2C

2 Bedroom + Library

1781 sq.ft.

Outdoor Area - 561 sq.ft.

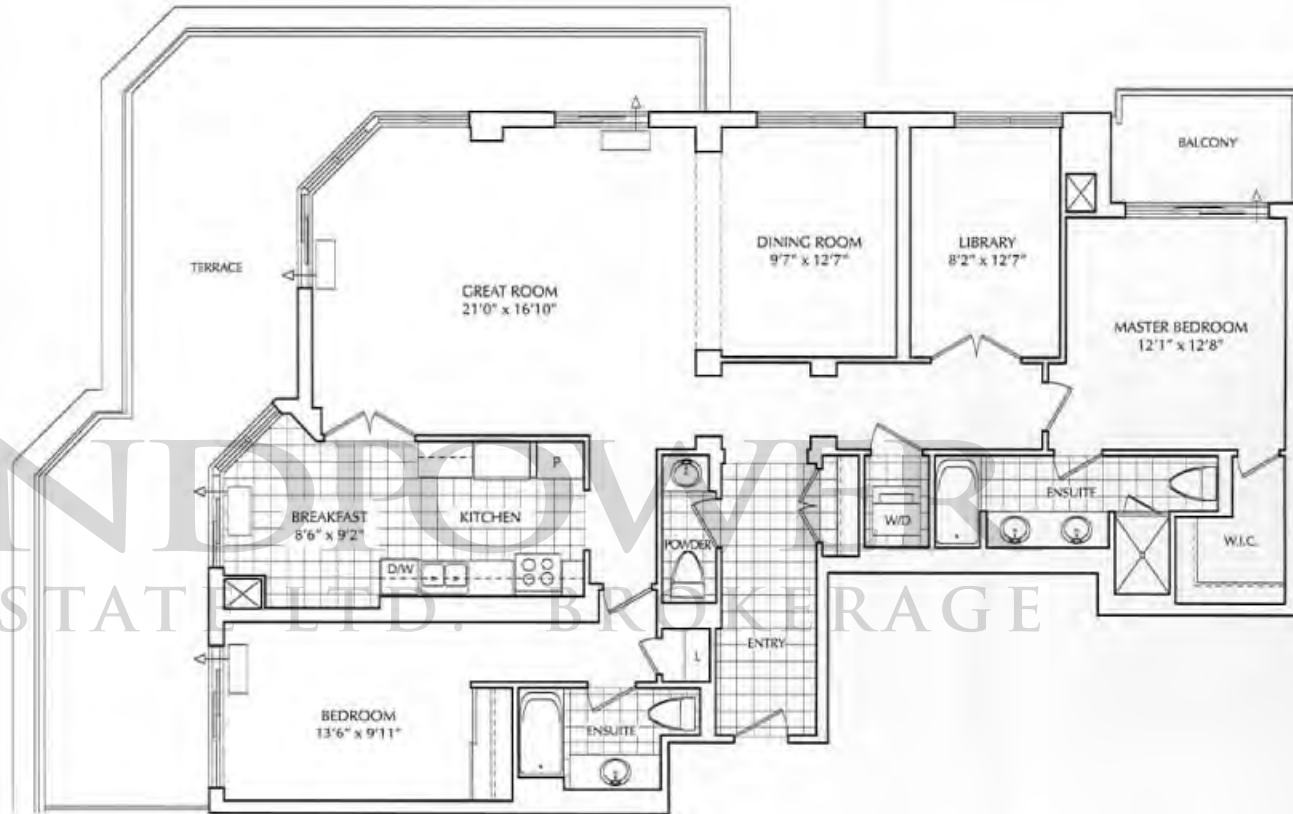
Total Area - 2342 sq.ft.



**THE BAYVIEW**  
TERRACED CONDOMINIUM RESIDENCES

**Daniels**  
love where you live™

A joint venture community with Amica Mature Lifestyles™ Inc.



All areas and stated room dimensions are approximate. Floor area measured in accordance with Tarion Warranty Corporation bulletin #22. Actual living area will vary from the stated floor area. The purchaser acknowledges that the actual unit purchased may be a reverse layout to the plan shown. Illustration is artist concept. E & O. E.



# The Southdale

Suite 3J

2 Bedroom + Library + Family

1917 sq.ft.

Outdoor Area - 824 sq.ft.

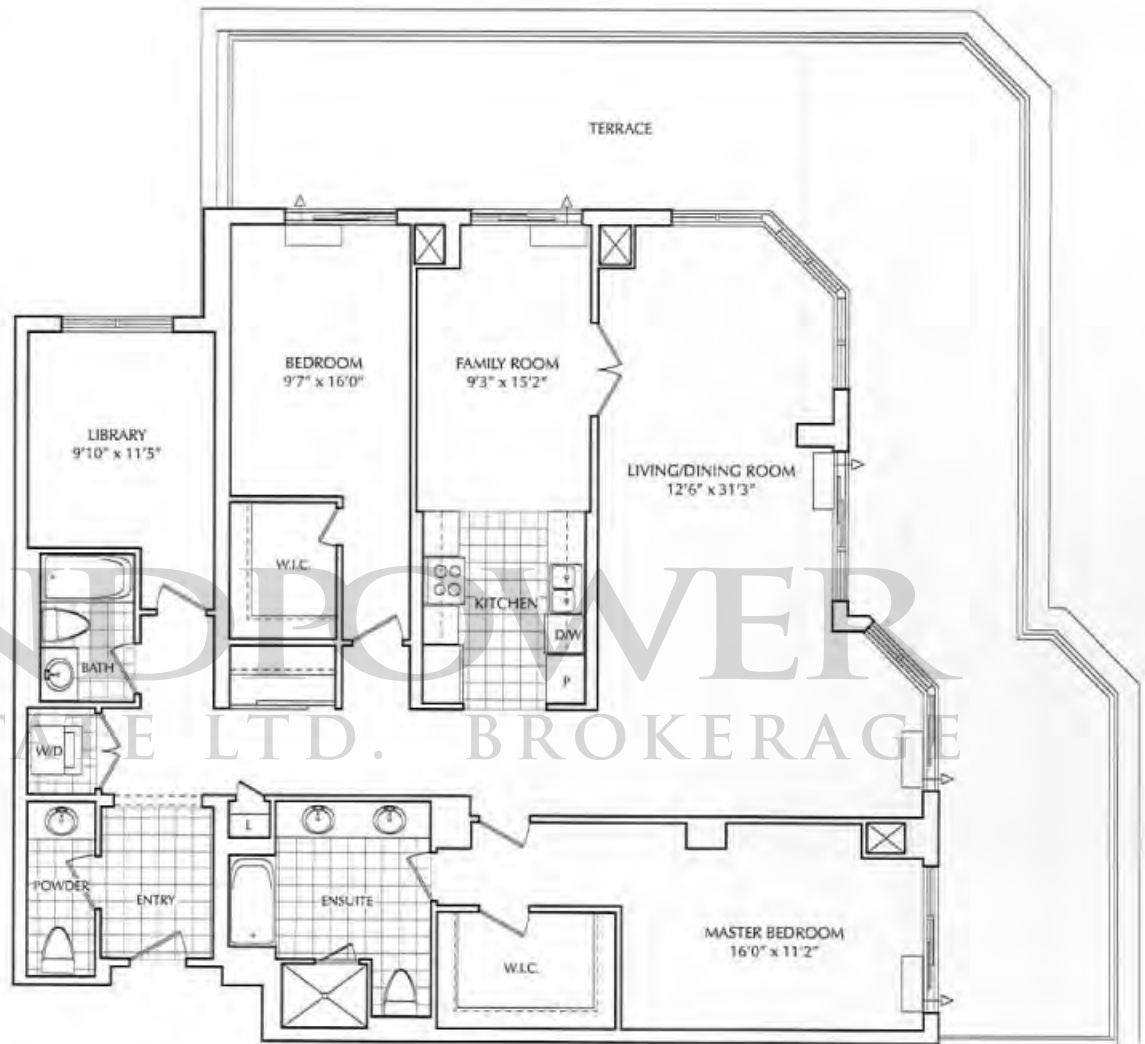
Total Area - 2741 sq.ft.



**THE BAYVIEW**  
TERRACED CONDOMINIUM RESIDENCES

**Daniels**  
love where you live™

A joint venture community with Amica Mature Lifestyles® Inc.



5th FLOOR

All areas and stated room dimensions are approximate. Floor area measured in accordance with Torion Warranty Corporation bulletin #22. Actual living area will vary from the stated floor area. The purchaser acknowledges that the actual unit purchased may be a reverse layout to the plan shown. Illustration is artist concept. E. & O. E.

# The Hartford

Suite 3K

2 Bedroom + Library + Family

2087 sq.ft.

Outdoor Area - 508 sq.ft.

Total Area - 2595 sq.ft.



**THE BAY VIEW**  
TERRACED CONDOMINIUM RESIDENCES

**Daniels**  
love where you live™

A joint venture community with Amica Mature Lifestyles™ Inc.



7th FLOOR

All areas and stated room dimensions are approximate. Floor area measured in accordance with Tarion Warranty Corporation bulletin #22. Actual living area will vary from the stated floor area. The purchaser acknowledges that the actual unit purchased may be a reverse layout to the plan shown. Illustration is artist concept. E. & O. E.

# The Barrington

Suite 3G

2 Bedroom + Library + Family

2157 sq.ft.

Outdoor Area - 824 sq.ft.

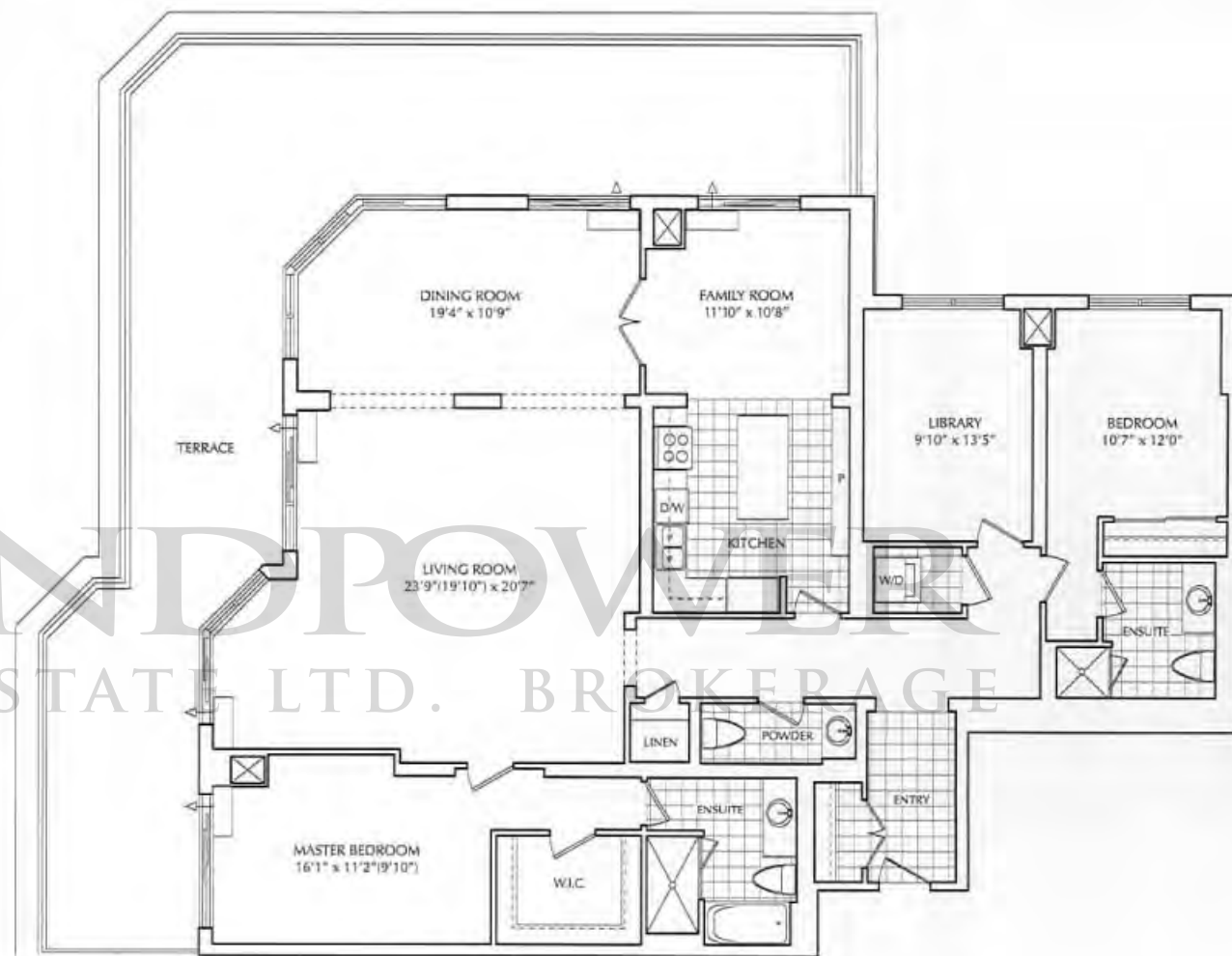
Total Area - 2981 sq.ft.



**THE BAYVIEW**  
TERRACED CONDOMINIUM RESIDENCES

**Daniels**  
love where you live™

A joint venture community with Amica Mature Lifestyles™ Inc.



5th FLOOR

All areas and stated room dimensions are approximate. Floor area measured in accordance with Tarion Warranty Corporation bulletin #22. Actual living area will vary from the stated floor area. The purchaser acknowledges that the actual unit purchased may be a reverse layout to the plan shown. Illustration is artist concept. E. & O. E.

# The Chedworth Manor

Suite 4B

1 Bedroom

789 sq.ft.

Outdoor Area - 99 sq.ft.

Total Area - 888 sq.ft.

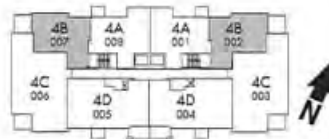
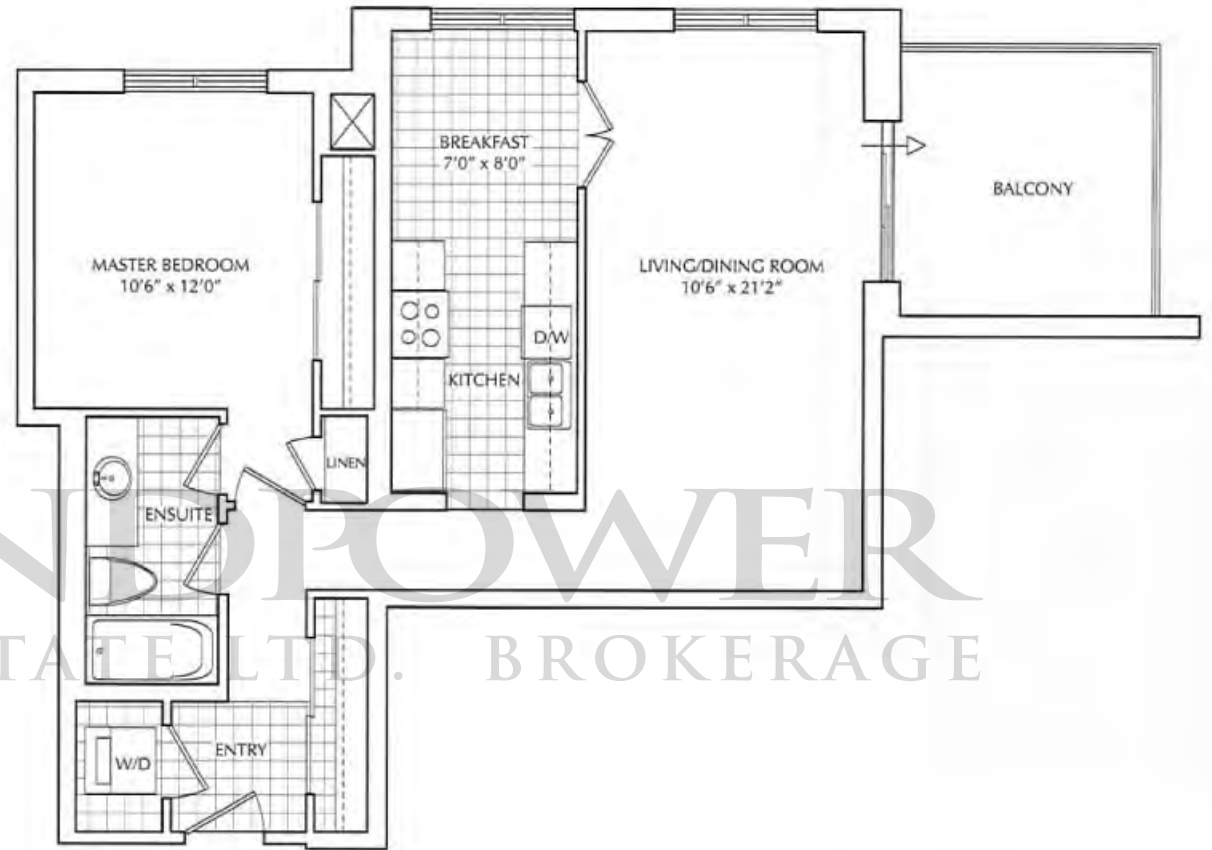


**THE BAYVIEW**

TERRACED CONDOMINIUM RESIDENCES

**Daniels**  
love where you live™

A joint venture community with Amica Mature Lifestyles™ Inc.



2nd - 3rd FLOOR

All areas and stated room dimensions are approximate. Floor area measured in accordance with Torion Warranty Corporation bulletin #22. Actual living area will vary from the stated floor area. The purchaser acknowledges that the actual unit purchased may be a reverse layout to the plan shown. Illustration is artist concept. E. & O. E.



# The Edenridge Manor

Suite 4A

1 Bedroom

842 sq.ft.

Outdoor Area - 39 sq.ft.

Total Area - 881 sq.ft.

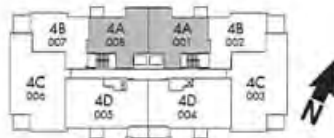


**THE BAYVIEW**

TERRACED CONDOMINIUM RESIDENCES

**Daniels**  
love where you live™

A joint venture community with Amica Mature Lifestyles™ Inc.



2nd - 3rd FLOOR

All areas and stated room dimensions are approximate. Floor area measured in accordance with Tarion Warranty Corporation bulletin #22. Actual living area will vary from the stated floor area. The purchaser acknowledges that the actual unit purchased may be a reverse layout to the plan shown. Illustration is artist concept. E. & O. E.

# The Attingham Manor

Suite 4D

2 Bedroom + Den

1192 sq.ft.

Outdoor Area - 119 sq.ft.

Total Area - 1311 sq.ft.

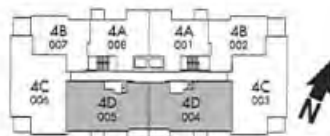
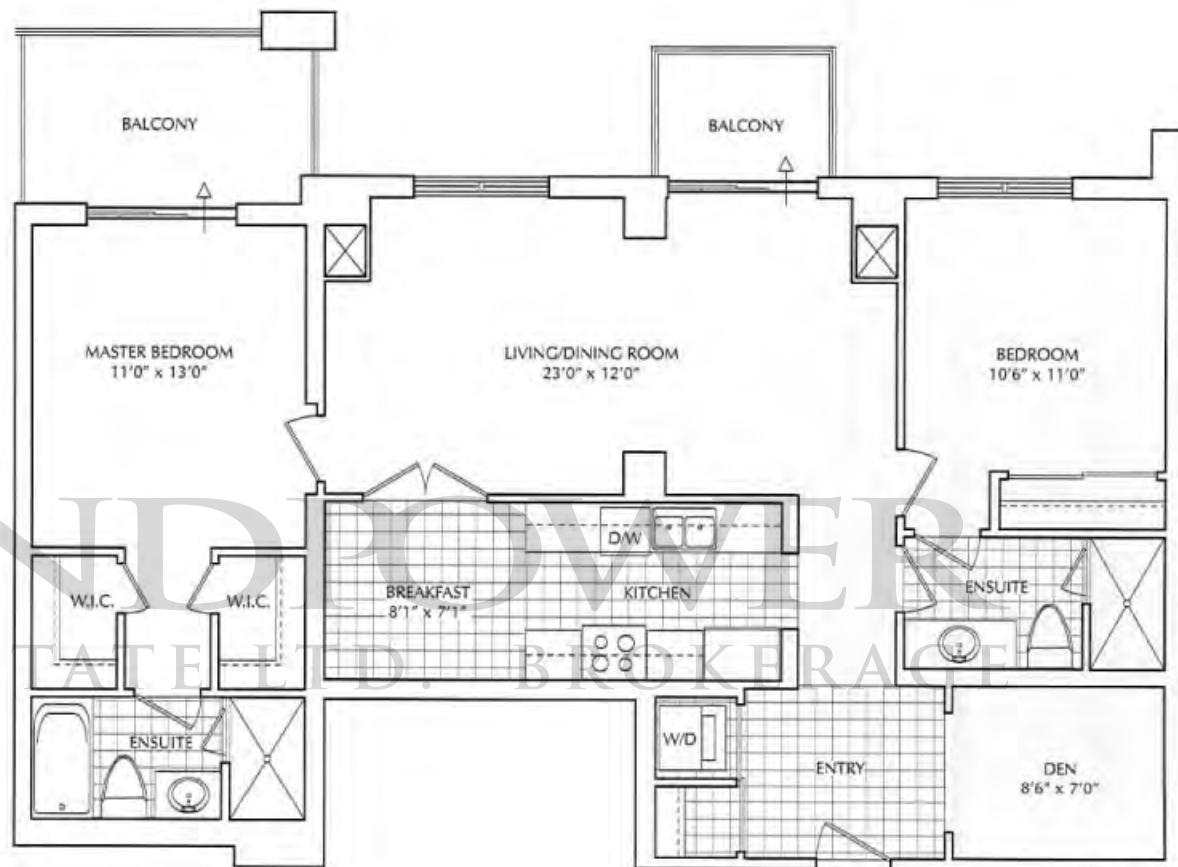


**THE BAYVIEW**

TERRACED CONDOMINIUM RESIDENCES

**Daniels**  
love where you live

A joint venture community with Amica Mature Lifestyles<sup>SM</sup> Inc.



2nd - 3rd FLOOR

All areas and stated room dimensions are approximate. Floor area measured in accordance with Tarion Warranty Corporation bulletin #22. Actual living area will vary from the stated floor area. The purchaser acknowledges that the actual unit purchased may be a reverse layout to the plan shown. Illustration is artist concept. E. & O. E.

# The Waterford Manor

Suite 4C

2 Bedroom + Den

1401 sq.ft.

Outdoor Area - 82 sq.ft.

Total Area - 1483 sq.ft.

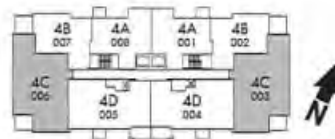


THE BAYVIEW

TERRACED CONDOMINIUM RESIDENCES

Daniels  
love where you live™

A joint venture community with Amica Mature Lifestyles™ Inc.



2nd - 3rd FLOOR

All areas and stated room dimensions are approximate. Floor area measured in accordance with Tarion Warranty Corporation bulletin #22. Actual living area will vary from the stated floor area. The purchaser acknowledges that the actual unit purchased may be a reverse layout to the plan shown. Illustration is artist concept. E. & O. E.



THE BAYVIEW

TERRACED CONDOMINIUM RESIDENCES

416.221.3939

TheBayview.ca

Daniels

love where you live™

A joint venture community with Amica Mature Lifestyles™ Inc.