



ANNOPOWER  
ESTD. 1988 LTD. BROKERAGE

Live a life  
of privilege.



BISHOP'S GATE

# The Amenities of Markham & Richmond Hill



*Artist's concept. Map not to scale.  
Site subject to change without notice.  
For reference use only - E.O.E. 04/18/11*



## BISHOP'S GATE

AT VICTORIA SQUARE

# MASTER PLAN



# Site Plan

## BISHOP'S GATE AT VICTORIA SQUARE

**LEGEND**

- KNIGHT SERIES
- BARON SERIES
- EARL SERIES

*Dimensions & specifications are subject to change without notice. Landscaping is artist's concept. E. & O.E. 08/03/11*



Woodlot

Existing Residential Area

Park

Helford Street

# BISHOP'S GATE

## PRICE LIST

JULY 20, 2011

<b>25'+ TOWNS</b>				
Model	Elevation / Sqft.	Price *	Extra Bdrm	Extra Ensuite Bdrm
Knight 1	A 1,887	\$544,990	+\$5,000	
	B 1,887			
Knight 2	A 2,018	\$549,990	+\$5,000	
	B 1,989			
Knight 3	A 2,074	\$559,990		+\$8,000
	B 2,113			
Knight 3 END	A 2,116	\$589,990		
	B 2,156			
Knight 3 CORNER	A 2,116	\$609,990		
	B 2,156			

<b>32'+ SINGLES</b>				
Model	Elevation / Sqft.	Price *	Extra Bdrm	In-Law Suite
Baron 1	A 2,619	\$699,990	+\$5,000	
	B 2,619			
Baron 2	A 2,623	\$699,990	+\$5,000	
	B 2,623			
Earl 1	A 2,671	\$739,990		+\$10,000
	B 2,671			
Earl 2	A 2,652	\$739,990		
	B 2,652			

\*Prices inclusive of HST. Prices subject to change without notice. Some other premiums may apply, speak to sales representative for details. E.&O.E.



BISHOP'S GATE

AT VICTORIA SQUARE



BISHOP'S GATE

AT VICTORIA SQUARE

THE KNIGHT 1 ELEV. A 1,887 SQ.FT.



ELEV. B



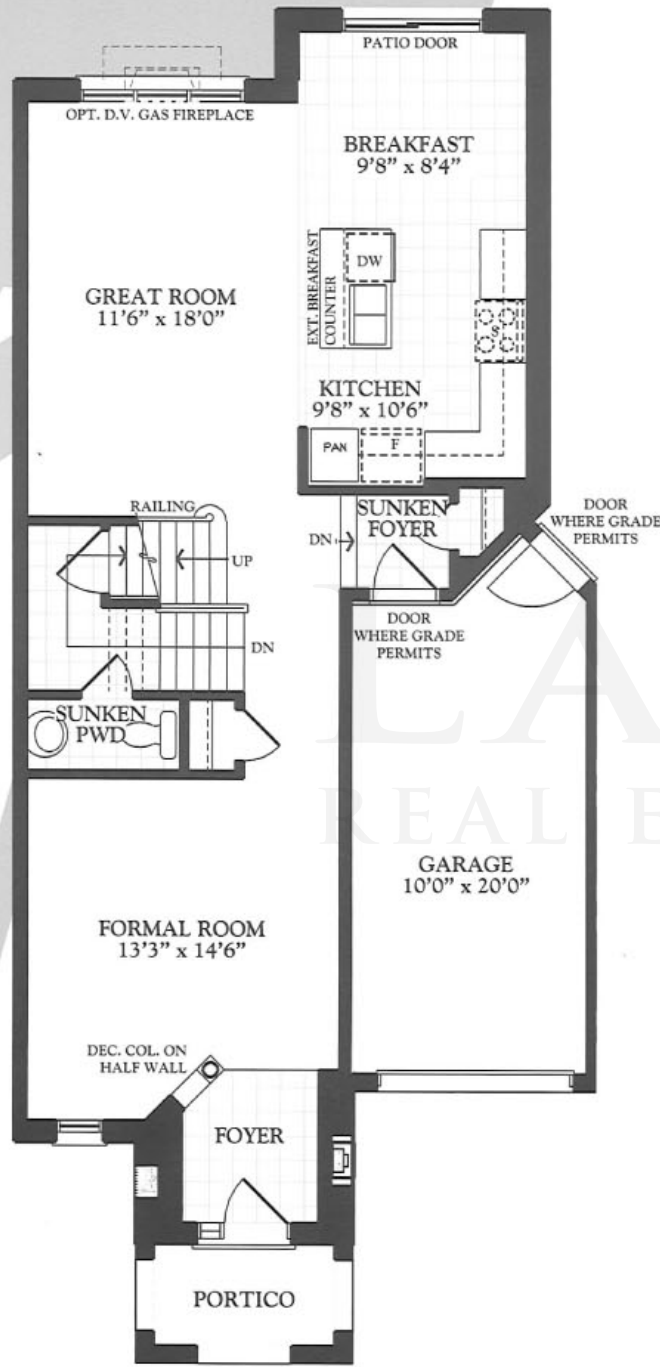
BISHOP'S GATE

AT VICTORIA SQUARE

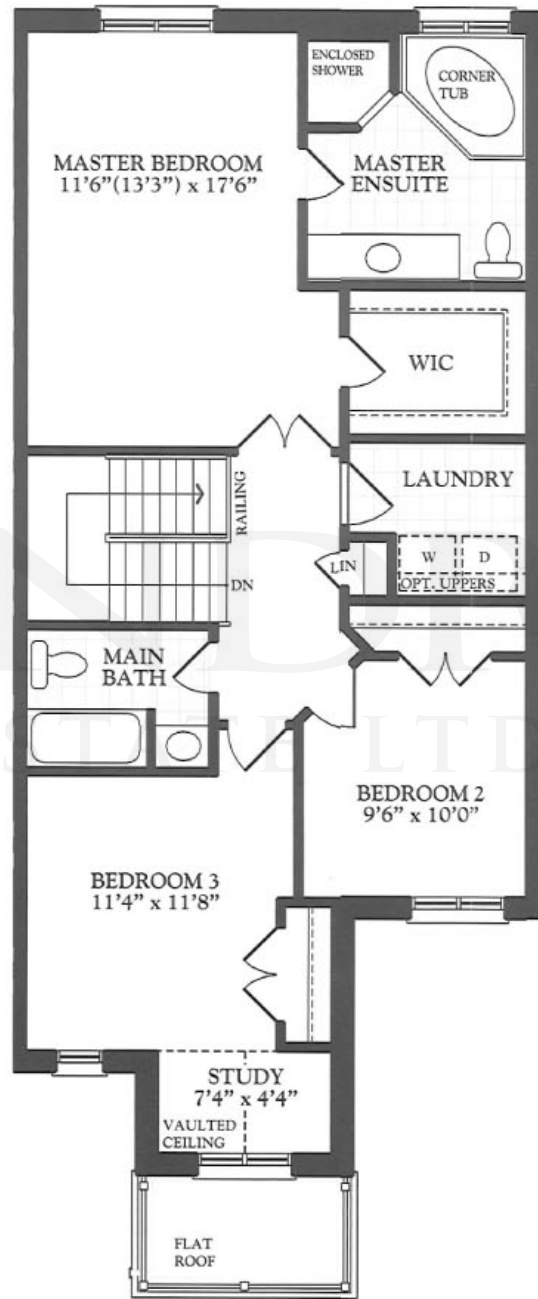
THE KNIGHT 1 ELEV. B 1,887 SQ. FT.

# The Knight 1

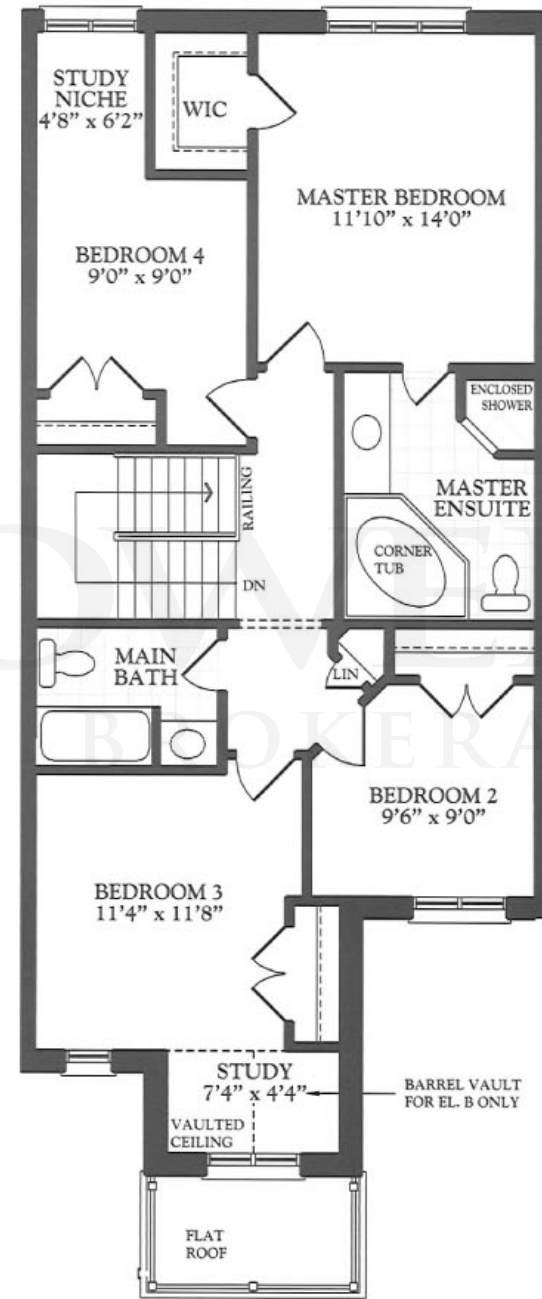
Elev. A / B 1,887 sq.ft.



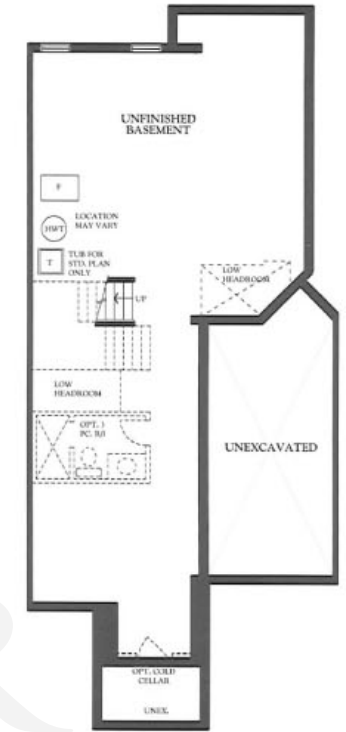
GROUND FLOOR ELEV. A



SECOND FLOOR ELEV. A



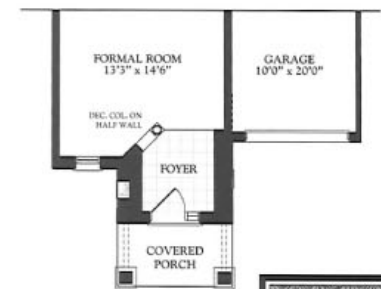
OPT. 4-BEDROOM SECOND FLOOR ELEV. A & B



BASMENT ELEV. A & B



PART. SECOND FLOOR ELEV. B



PART. GROUND FLOOR ELEV. B



BISHOP'S GATE

AT VICTORIA SQUARE





BISHOP'S GATE

AT VICTORIA SQUARE

THE KNIGHT 2 ELEV. A 2,018 SQ. FT.





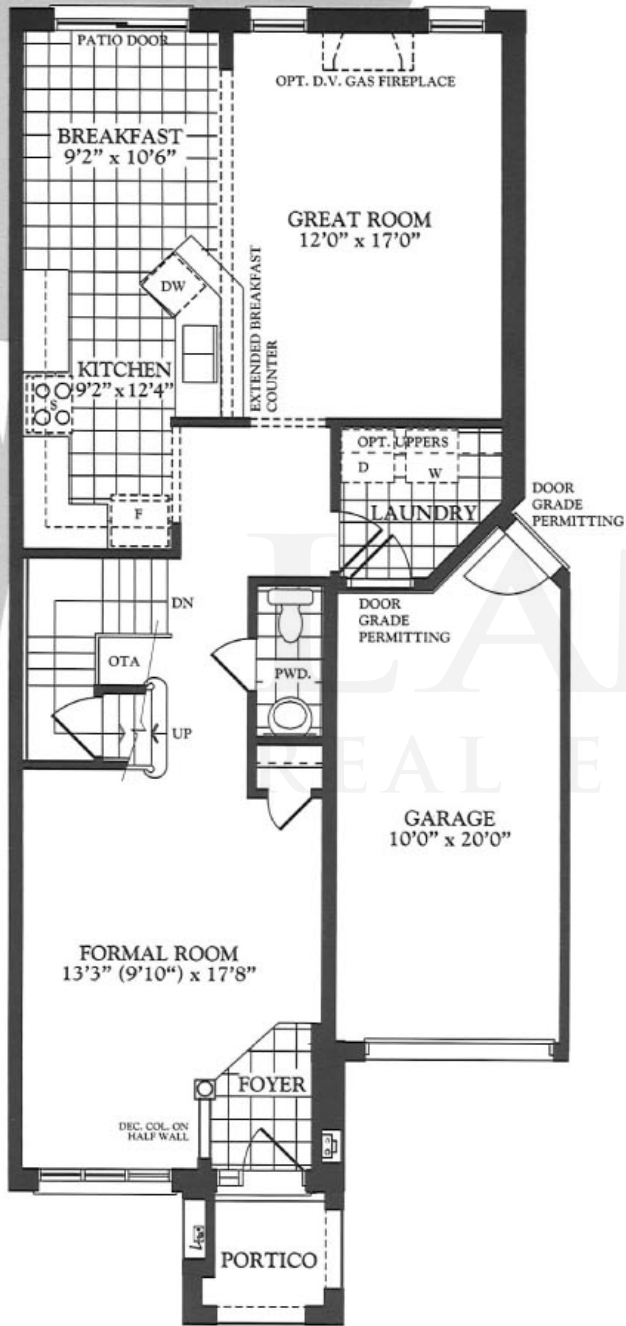
BISHOP'S GATE

AT VICTORIA SQUARE

THE KNIGHT 2 ELEV. B 1,989 SQ.FT.

# The Knight 2

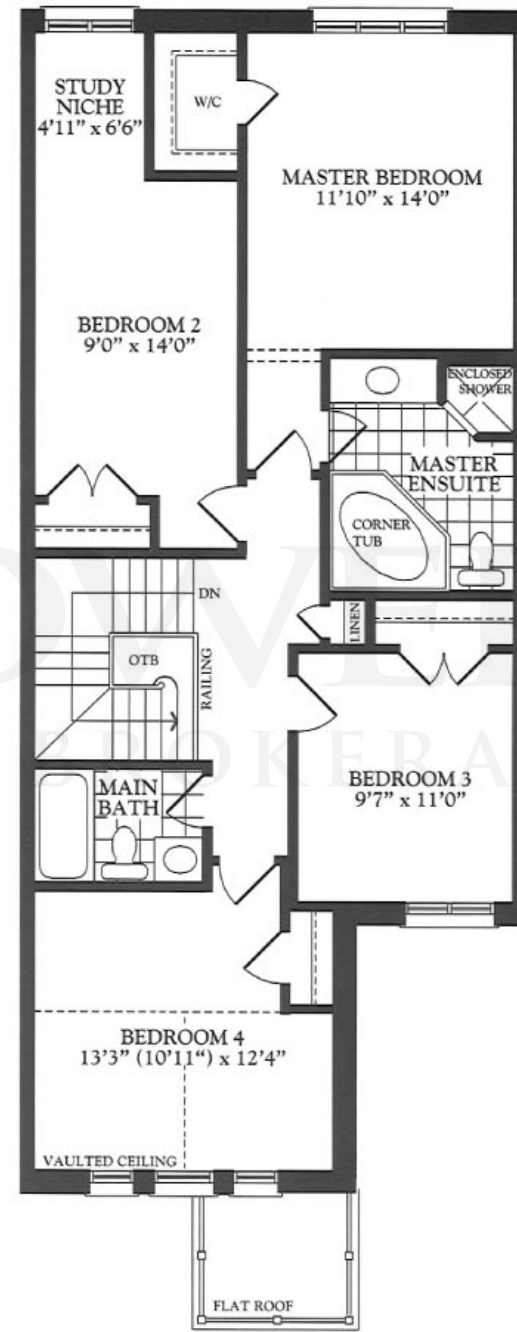
Elev. A 2,018 sq.ft. / Elev. B 1,989 sq.ft.



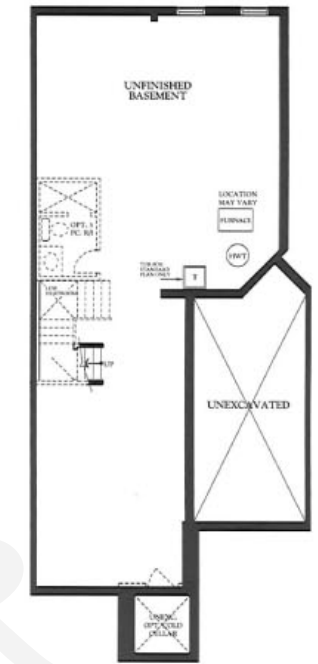
**GROUND FLOOR ELEV. A**



**SECOND FLOOR ELEV. A**



**OPT. BEDROOM SECOND FLOOR ELEV. A**



**BASEMENT ELEV. A & B**



**PART. SECOND FLOOR ELEV. B**



**PART. GROUND FLOOR ELEV. B**



**BISHOP'S GATE**

AT VICTORIA SQUARE



ELEV. A



BISHOP'S GATE

AT VICTORIA SQUARE

THE KNIGHT 3 ELEV. A 2,074 SQ.FT.



ELEV. B



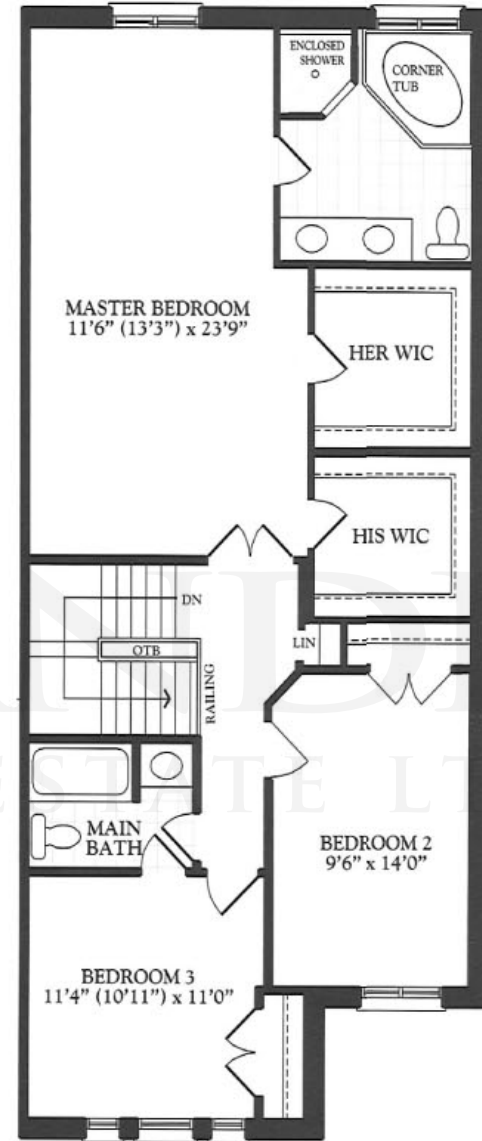
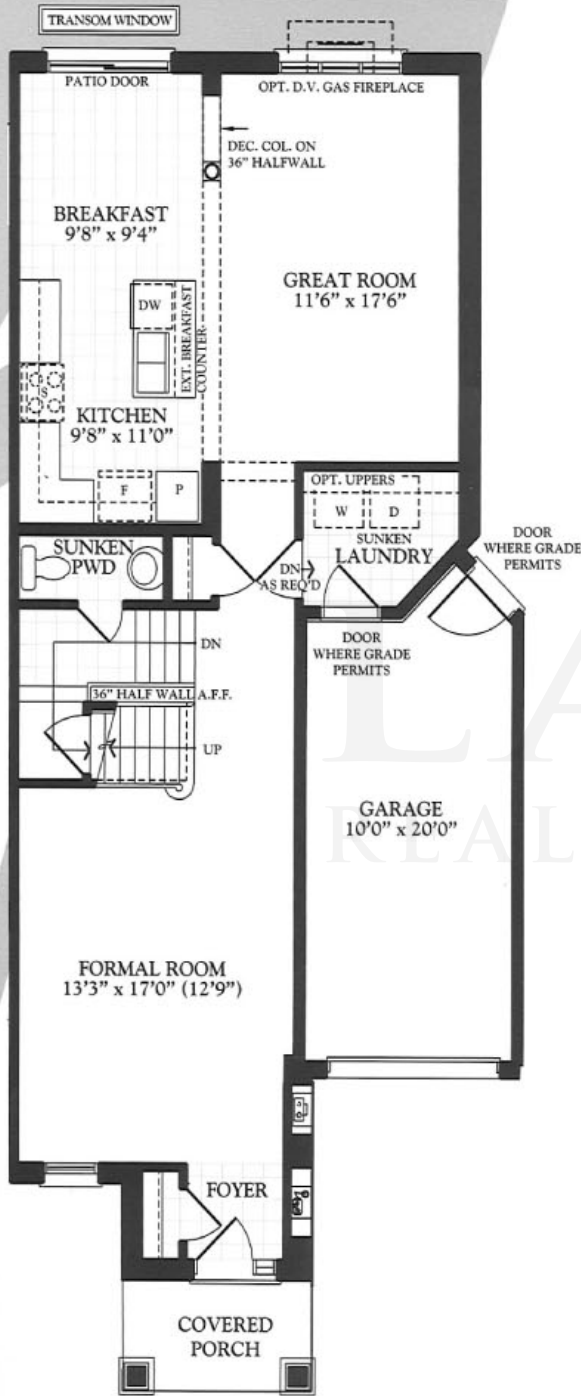
BISHOP'S GATE

AT VICTORIA SQUARE

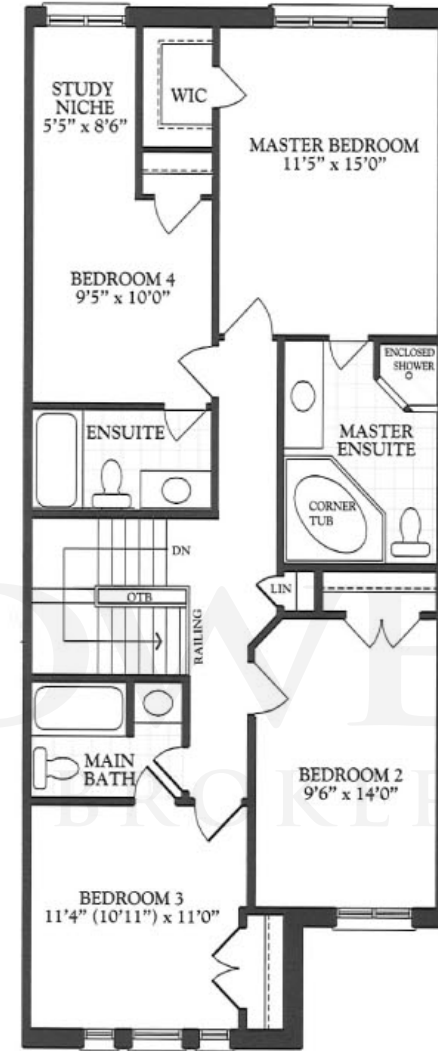
THE KNIGHT 3 ELEV. B 2,113 SQ.FT.

# The Knight 3 Standard Plan

Elev. A 2,074 sq.ft. / Elev. B 2,113 sq.ft.



SECOND FLOOR ELEV. A



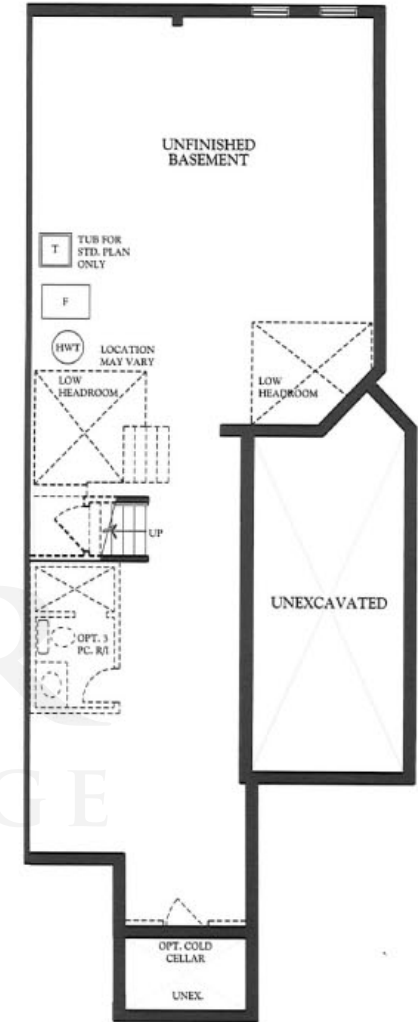
ALT. 4 BEDROOM PLAN WITH ADDITIONAL ENSUITE SECOND FLOOR ELEV. A



PART. GROUND FLOOR ELEV. B



PART. SECOND FLOOR ELEV. B



BASEMENT ELEV. A



PART. BASEMENT ELEV. B



**BISHOP'S GATE**

AT VICTORIA SQUARE





ELEV. A



BISHOP'S GATE

AT VICTORIA SQUARE

THE **BARON 1** ELEV. A 2,619 SQ.FT.



ELEV. B



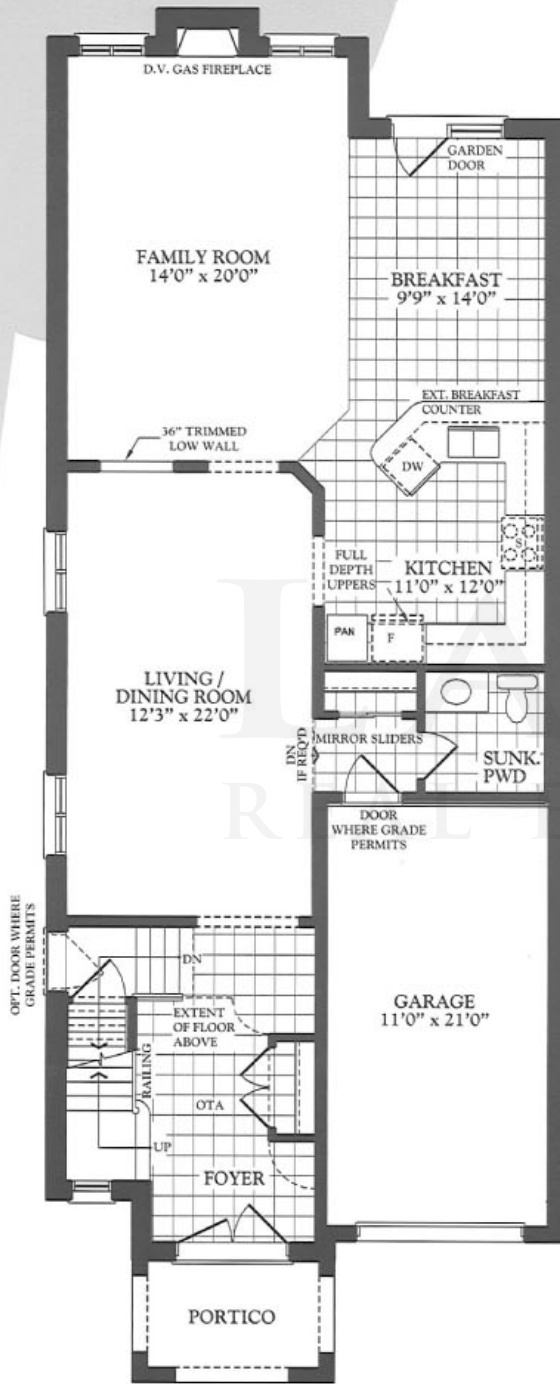
BISHOP'S GATE

AT VICTORIA SQUARE

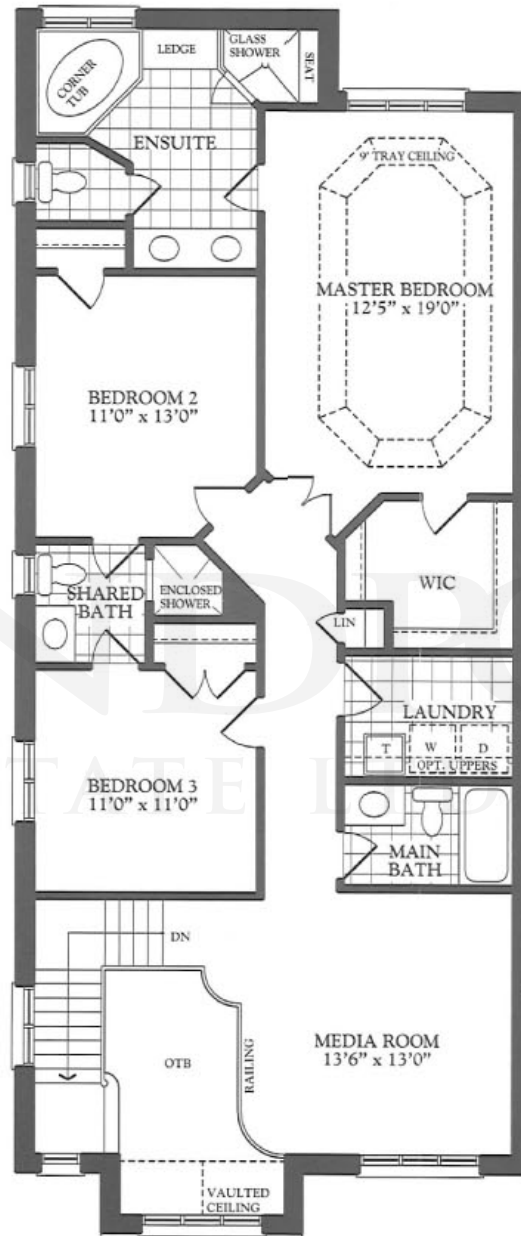
THE **BARON 1** ELEV. B 2,619 SQ.FT.

# The Baron 1

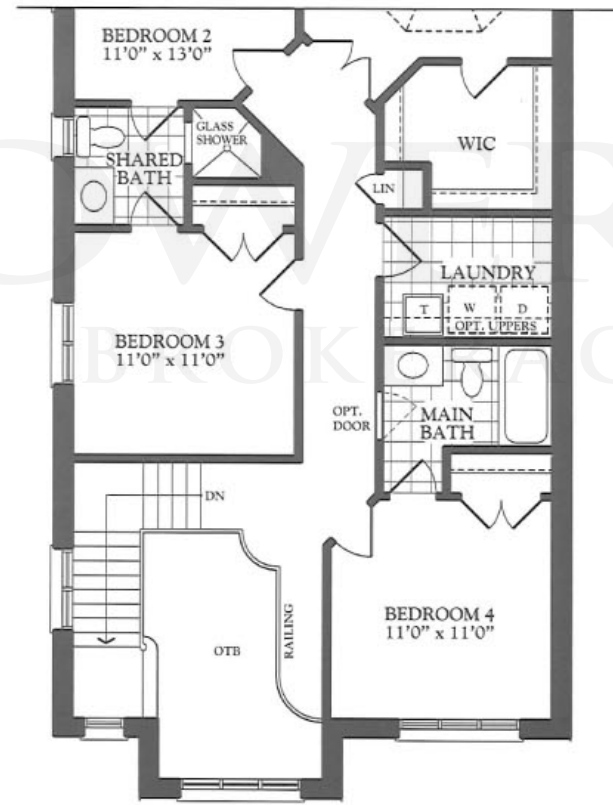
Elev. A / B 2,619 sq.ft.



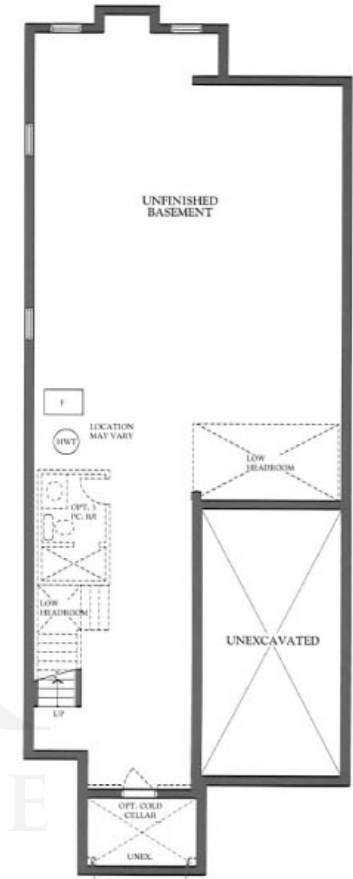
GROUND FLOOR ELEV. A



SECOND FLOOR ELEV. A



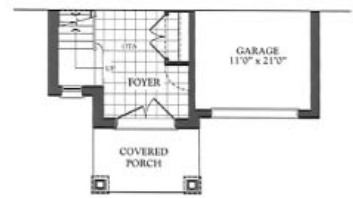
PART. SECOND FLOOR 4 BEDROOM ELEV. A - B



BASEMENT ELEV. A & B



PART. SECOND FLOOR ELEV. B



PART. GROUND FLOOR ELEV. B



**BISHOP'S GATE**

AT VICTORIA SQUARE







ELEV. A



BISHOP'S GATE

AT VICTORIA SQUARE

THE **BARON 2** ELEV. A 2,623 SQ.FT.



ELEV. B



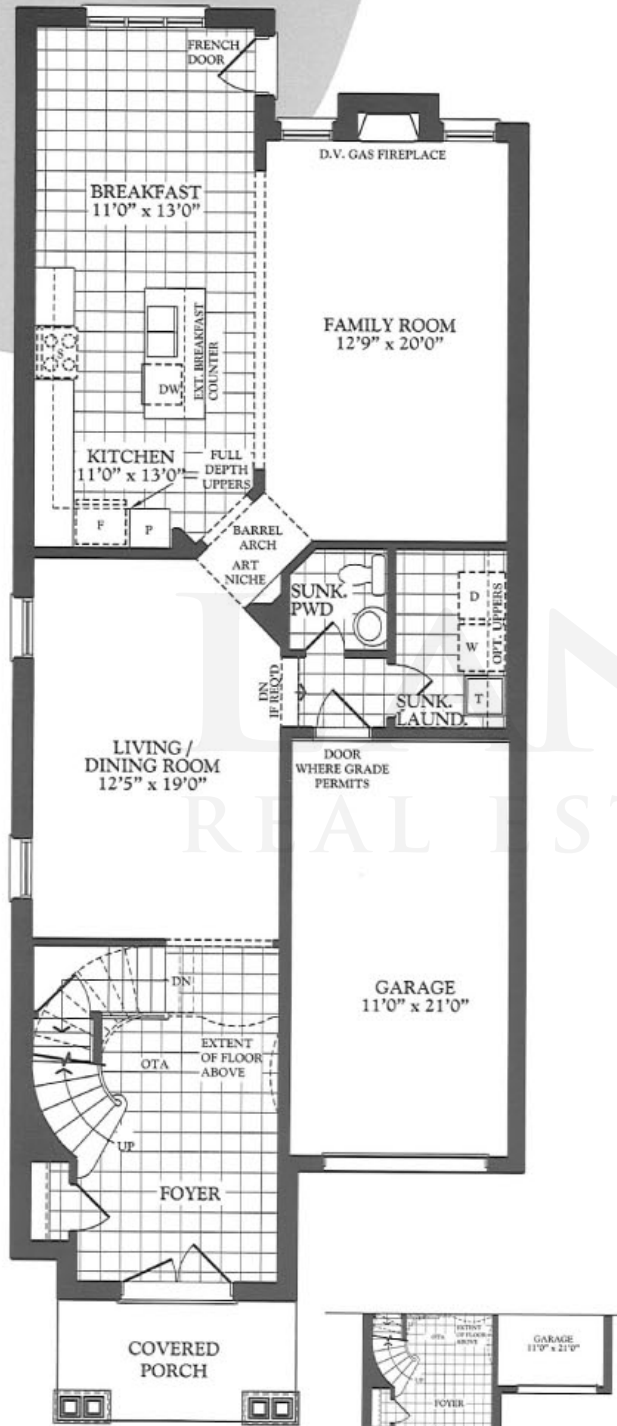
BISHOP'S GATE

AT VICTORIA SQUARE

THE **BARON 2** ELEV. B 2,623 SQ.FT.

# The Baron 2

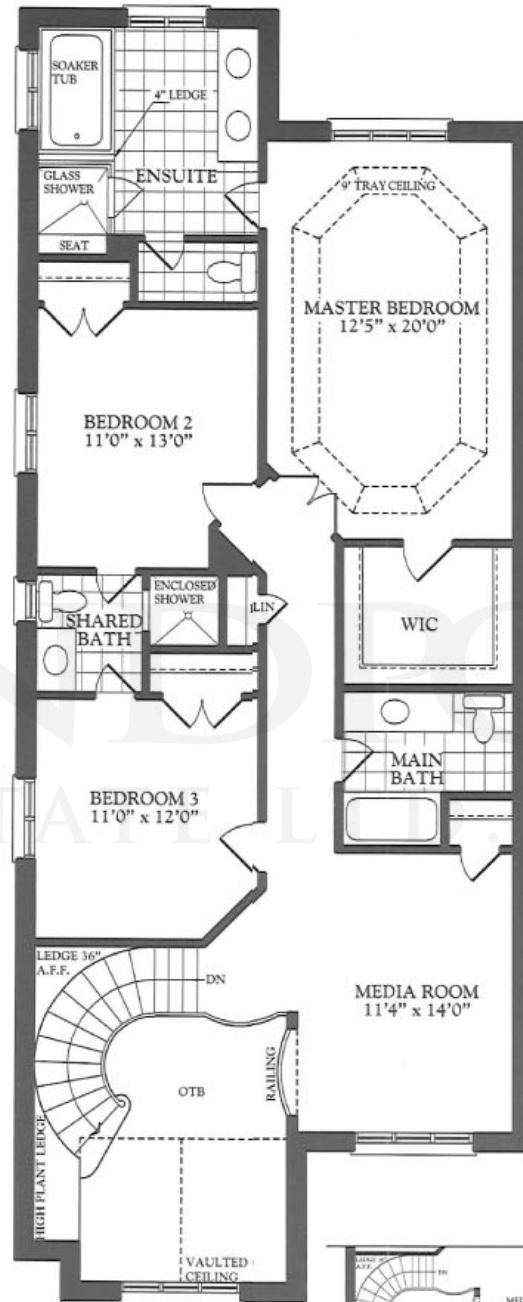
Elev. A / B 2,623 sq.ft.



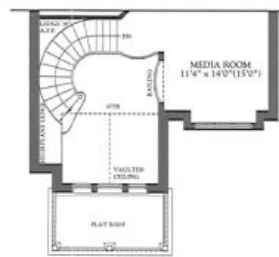
GROUND FLOOR ELEV. A



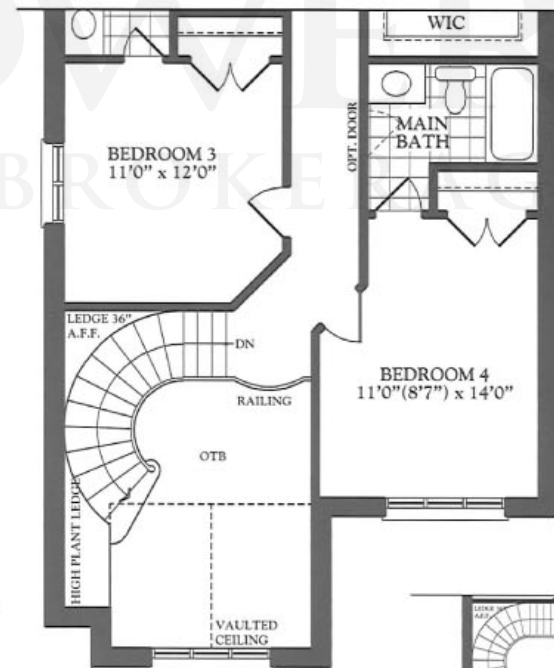
PART. GROUND FLOOR ELEV. B



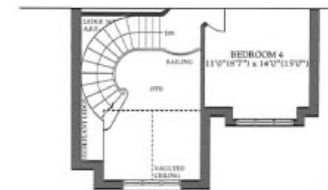
SECOND FLOOR ELEV. A



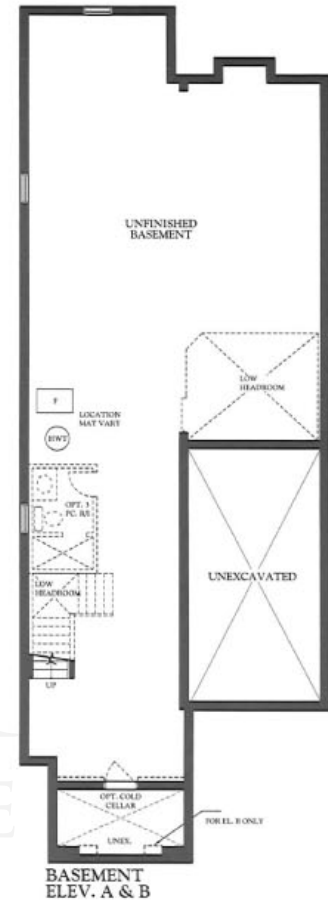
PART. SECOND FLOOR ELEV. B



PART. SECOND FLOOR 4 BEDROOM ELEV. A



PART. SECOND FLOOR 4 BEDROOM ELEV. B



BASEMENT ELEV. A & B



BISHOP'S GATE

AT VICTORIA SQUARE



ELEV. A



BISHOP'S GATE

AT VICTORIA SQUARE

THE EARL 1 ELEV. A 2,671 SQ.FT.



ELEV B



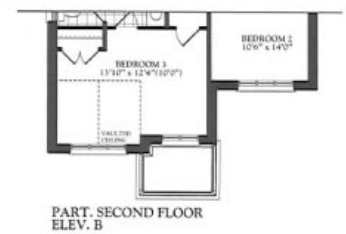
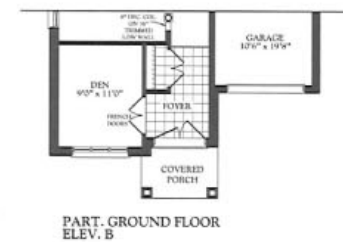
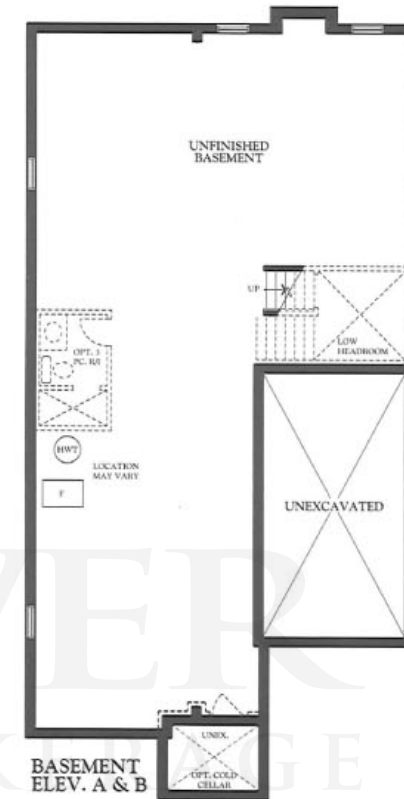
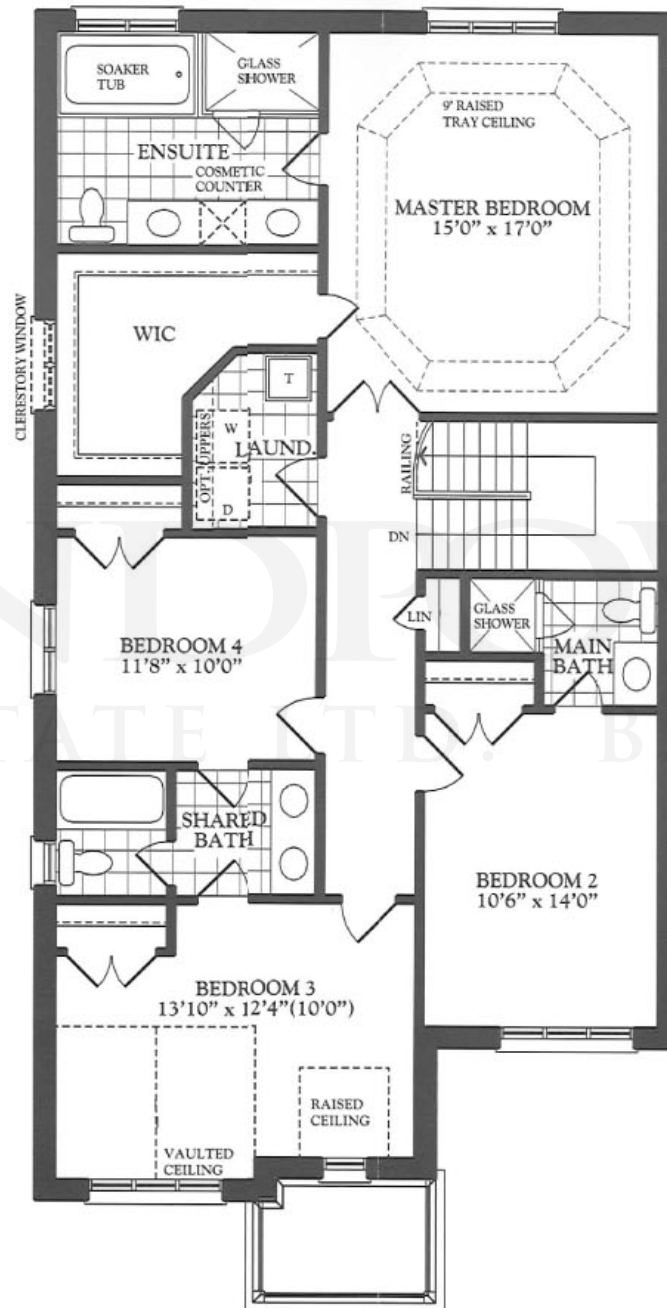
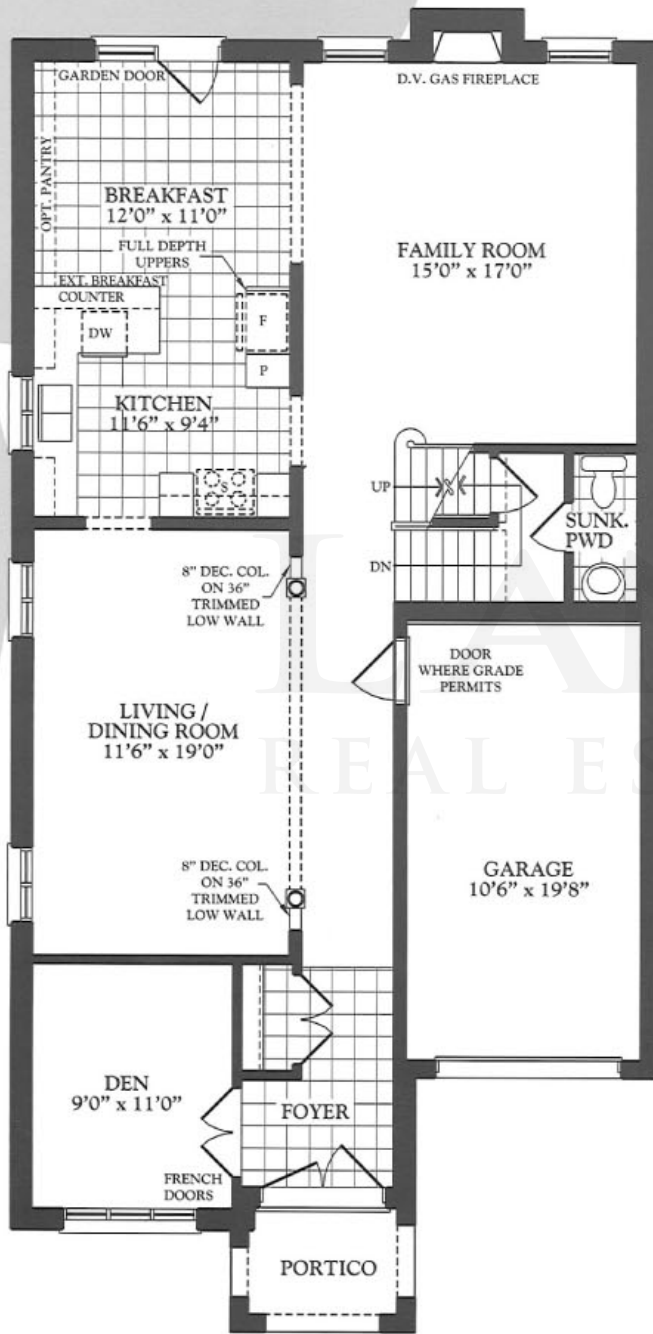
BISHOP'S GATE

AT VICTORIA SQUARE

THE EARL 1 ELEV. B 2,671 SQ.FT.

# The Earl 1

Elev. A / B 2,671 sq.ft.



BISHOP'S GATE

AT VICTORIA SQUARE



BISHOP'S GATE

AT VICTORIA SQUARE

THE EARL 2 ELEV. A 2,652 SQ.FT.



BISHOP'S GATE

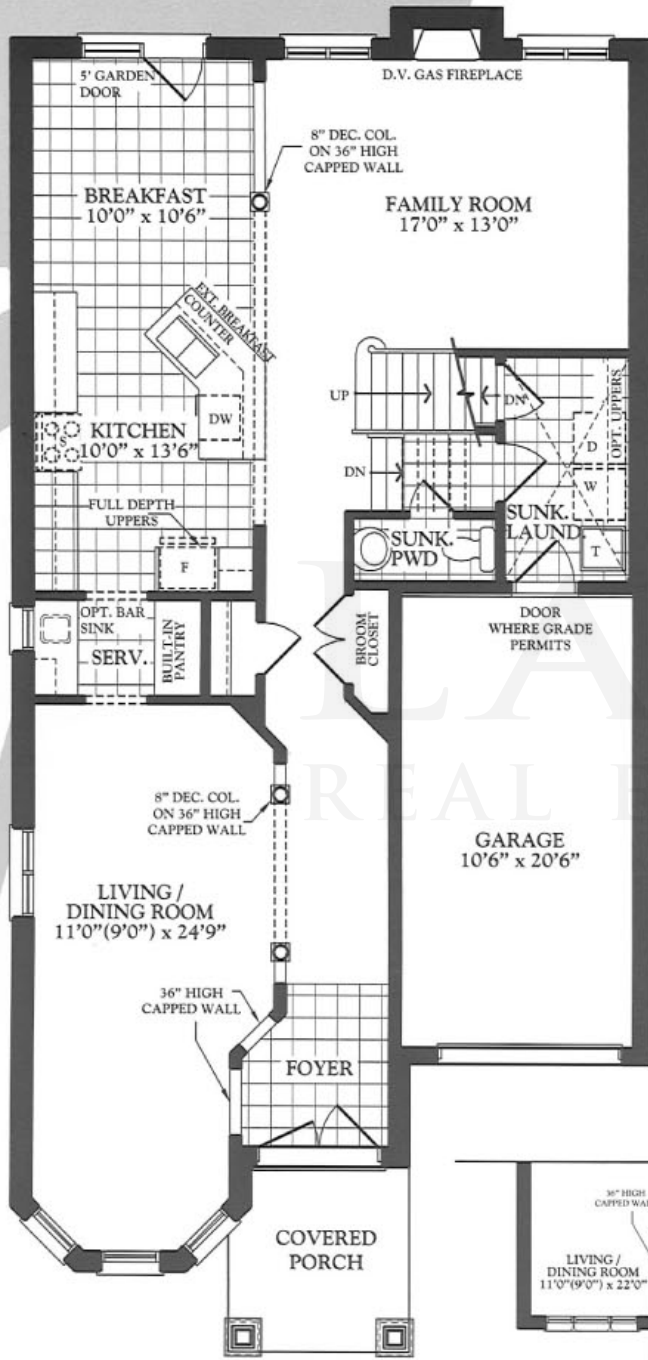
AT VICTORIA SQUARE

THE EARL 2 ELEV. B 2,652 SQ.FT.

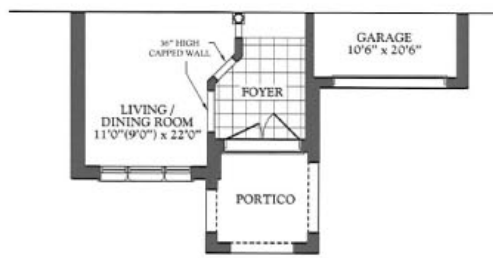


# The Earl 2

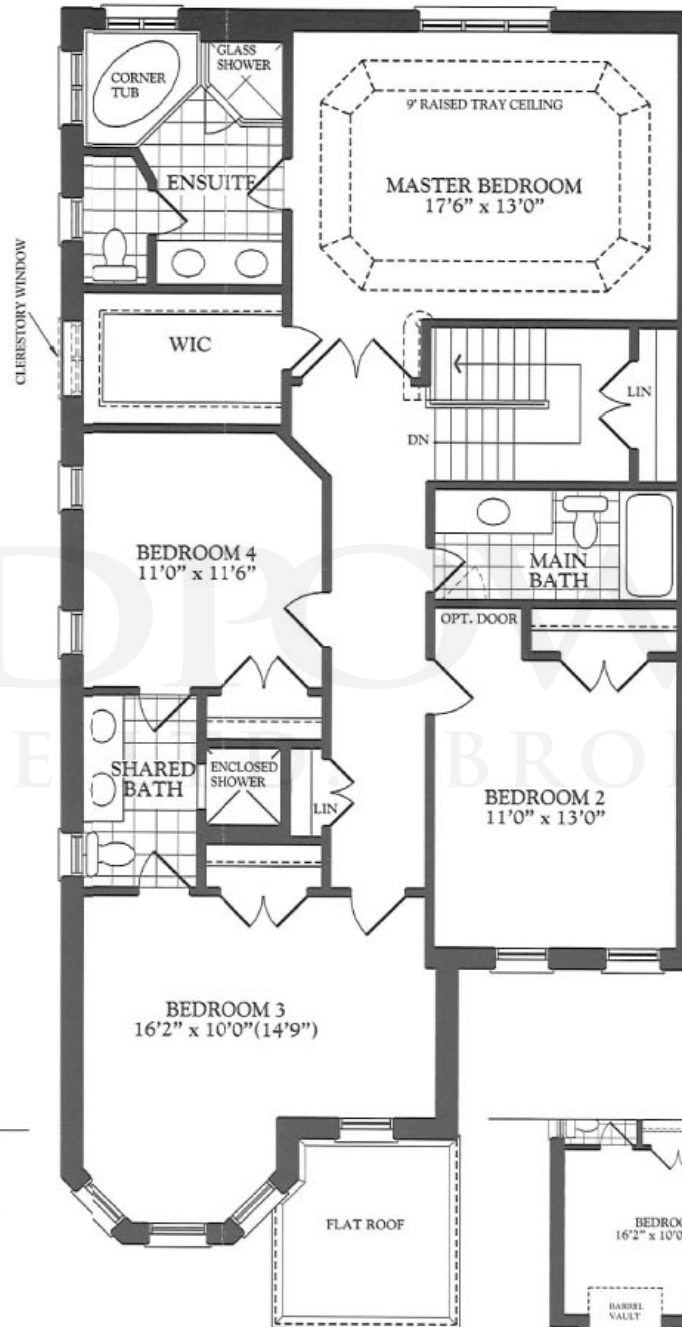
Elev. A / B 2,652 sq.ft.



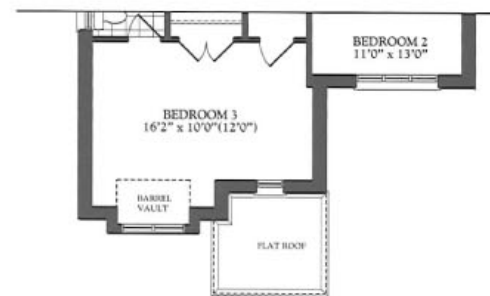
GROUND FLOOR ELEV. A



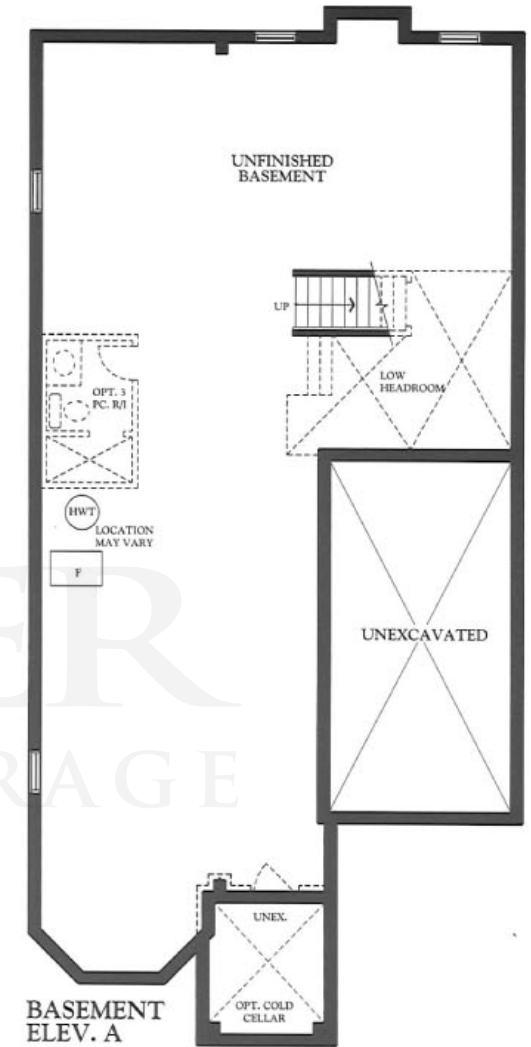
PART. GROUND FLOOR ELEV. B



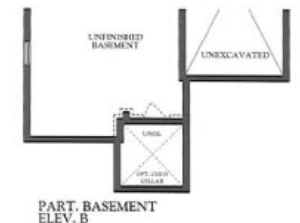
SECOND FLOOR ELEV. A



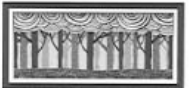
PART. SECOND FLOOR ELEV. B



BASEMENT ELEV. A



PART. BASEMENT ELEV. B



**BISHOP'S GATE**

AT VICTORIA SQUARE





## BISHOP'S GATE

AT VICTORIA SQUARE

905-474-1772  
[www.LiVantehomes.com](http://www.LiVantehomes.com)

Exclusive Agent



**LiVante**

DEVELOPMENTS