

BLYTHWOOD
AT
HUNTINGTON

LANDFLOWER
REAL ESTATE LTD. BROKERAGE



The red oak lined Allée greets residents and visitors on arrival.

LANDPOWER
REAL ESTATE LTD. BROKERAGE



Lush landscaping and classic gardens surround the two residences, complementing the magnificent ravine setting.



Tridel, for the fourth consecutive year, has been ranked number one in the 2009 J.D. Power and Associates New Condominium Builder Customer Satisfaction Study in the GTA.



2010 Ontario High-Rise Builder of the Year by Tarion.



2010 High-Rise Green Builder of the Year by BILD.



2009 Home Builder of the Year by the Ontario Home Builders' Association.





The Ground Level Amenity plan. Party Room, Outdoor terrace.



Tridel, for the fourth consecutive year, has been ranked number one in the 2009 J.D. Power and Associates New Condominium Builder Customer Satisfaction Study in the GTA.



2010 Ontario High-Rise Builder of the Year by Tarion.



2010 High-Rise Green Builder of the Year by BILD.



2009 Home Builder of the Year by the Ontario Home Builders' Association.





The Second Level Amenity plan



Swimming Pool



Weight and Yoga Studios



Fitness Room



Tridel, for the fourth consecutive year, has been ranked number one in the 2009 J.D. Power and Associates New Condominium Builder Customer Satisfaction Study in the GTA.



2010 Ontario High-Rise Builder of the Year by Tarion.



2010 High-Rise Green Builder of the Year by BILD.



2009 Home Builder of the Year by the Ontario Home Builders' Association.



TYPICAL (9' CEILINGS)

Suite	Design Type	Prices	Square Footage (Approximate)*	Maintenance (Monthly Estimate)*	Property Tax (Monthly Estimate)*
<u>2A</u>	2 Bedroom	\$550,000	920	\$525	\$381
<u>2A1</u>	2 Bedroom	SOLD OUT!	-	-	-
<u>2B</u>	2 Bedroom	SOLD OUT!	-	-	-
<u>2A2</u>	2 Bedroom	\$590,000	943	\$538	\$408
<u>2C</u>	2 Bedroom	\$710,000	1121	\$639	\$491
<u>2E</u>	2 Bedroom + Family	\$805,000	1303	\$743	\$557
<u>2J</u>	2 Bedroom	\$890,000	1443	\$823	\$616
<u>2G</u>	2 Bedroom	\$940,000	1417	\$808	\$651
<u>2H</u>	2 Bedroom	\$940,000	1422	\$811	\$651
<u>2K</u>	2 Bedroom	\$985,000	1489	\$849	\$682
<u>2LB</u>	2 Bedroom + Family	\$1,010,000	1506	\$858	\$699
<u>2F</u>	2 Bedroom	\$1,025,000	1372	\$859	\$709
<u>2N</u>	2 Bedroom + Family	\$1,265,000	1692	\$965	\$876
<u>2U</u>	2 Bedroom + Family	\$1,665,000	2266	\$1292	\$1152

Tentative Occupancy Spring 2013

8TH FLOOR AND PENTHOUSE (10' CEILINGS)

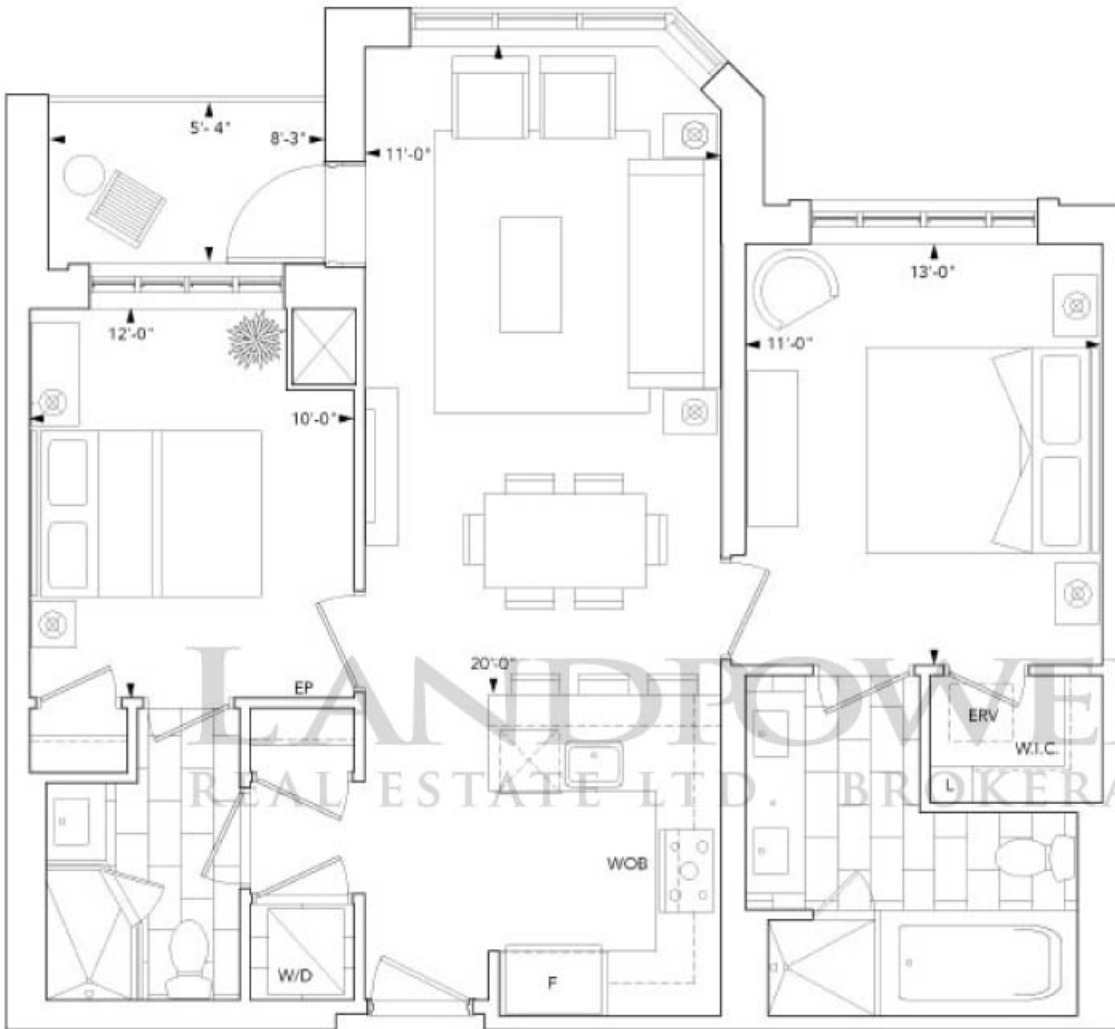
Suite	Design Type	Prices	Square Footage (Approximate)*	Maintenance (Monthly Estimate)*	Property Tax (Monthly Estimate)*
<u>2D</u>	2 Bedroom	\$850,000	1211	\$691	\$574
<u>2Q</u>	2 bedroom + Study	\$1,335,000	1871	\$1067	\$924
<u>2P</u>	2 Bedroom + Family	\$1,365,000	1786	\$1018	\$945
<u>2R</u>	2 bedroom + Study	\$1,505,000	1900	\$1083	\$1042
<u>2T NEW</u>	2 Bedroom + Den + Family	\$1,650,000	2274	\$1296	\$1142
<u>2V</u>	2 bedroom + Study	\$1,850,000	2307	\$1315	\$1280

Tentative Occupancy Spring 2013

TERRACES (One of a Kind Suite Designs)

Suite	Design Type	Prices	Square Footage (Approximate)*	Maintenance (Monthly Estimate)*	Property Tax (Monthly Estimate)*
<u>2A-T</u>	2 bedroom	SOLD OUT!	-	-	-
<u>2A-R-T2</u>	2 Bedroom	\$575,000	920	\$525	\$398
<u>2A-R-T1</u>	2 Bedroom	SOLD OUT!	-	-	\$401
<u>2A2-T</u>	2 Bedroom	SOLD OUT!	-	-	-
<u>2C-T</u>	2 Bedroom	SOLD OUT!	-	-	-
<u>2J-T</u>	2 Bedroom	\$900,000	1443	\$823	\$623
<u>2G-T</u>	2 Bedroom	\$980,000	1417	\$808	\$678
<u>2K-T</u>	2 Bedroom	\$990,000	1489	\$849	\$685
<u>2F-T</u>	2 Bedroom	SOLD OUT!	-	-	-
<u>2L-T</u>	2 bedroom + Family	SOLD OUT!	-	-	-
<u>2N-T</u>	2 Bedroom + Family	\$1,305,000	1692	\$965	\$903
<u>2P-T</u>	2 bedroom + Family	\$1,365,000	1786	\$1018	\$945
<u>2S-T</u>	2 Bedroom + Family	\$1,765,000	2136	\$1218	\$1222
<u>2X-T</u>	2 bedroom + Study + Family	\$1,810,000	2467	\$1407	\$1253
<u>2V-T</u>	2 bedroom + Study	SOLD OUT!	-	-	-
<u>2Y-T</u>	2 bedroom + Study + Family	SOLD OUT!	-	-	-
<u>2Z-T</u>	2 bedroom + Study + Family	\$2,510,000	2853	\$1627	\$1737

Tentative Occupancy Spring 2013



Tridel, for the fourth consecutive year, has been ranked number one in the 2009 J.D. Power and Associates New Condominium Builder Customer Satisfaction Study in the GTA.



2010 Ontario High-Rise Builder of the Year by Tarion.

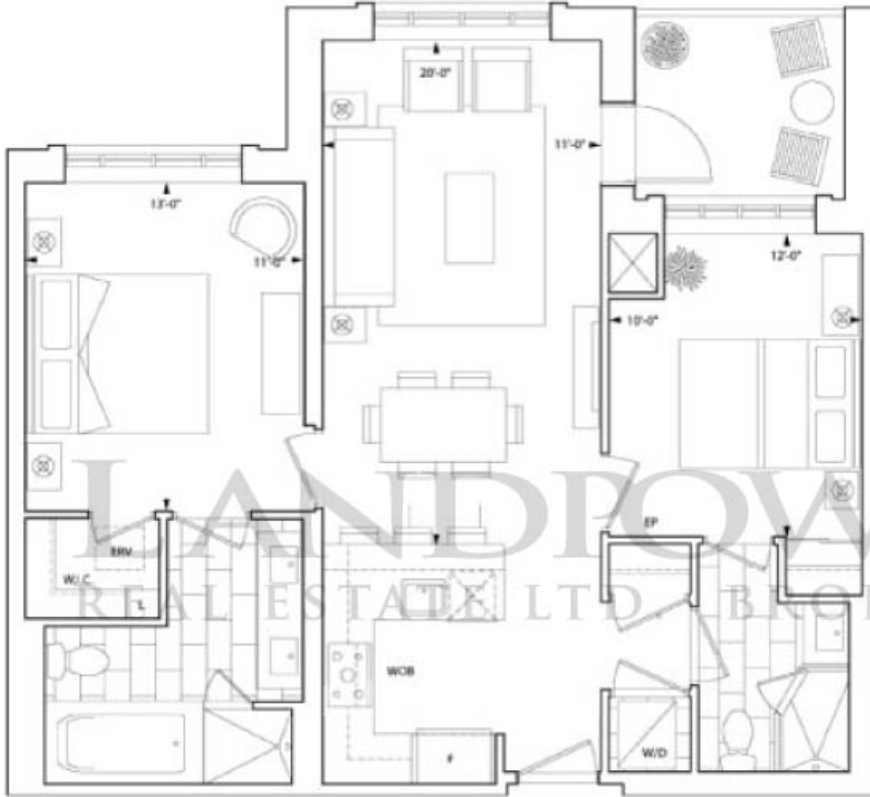


2010 High-Rise Green Builder of the Year by BILD.



2009 Home Builder of the Year by the Ontario Home Builders' Association.





Level 3



Level 4



Levels 5-7



Tridel, for the fourth consecutive year, has been ranked number one in the 2009 J.D. Power and Associates New Condominium Builder Customer Satisfaction Study in the GTA.



2010 Ontario High-Rise Builder of the Year by Tarion.

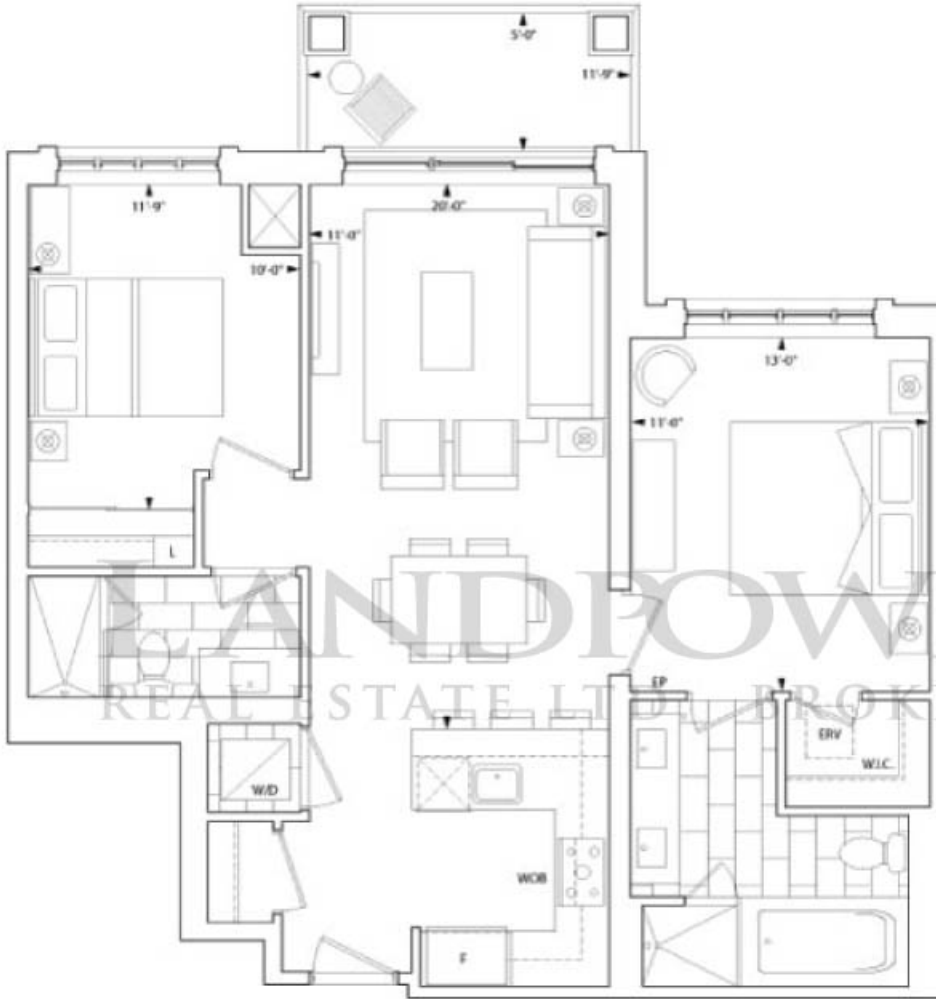


2010 High-Rise Green Builder of the Year by BILD.



2009 Home Builder of the Year by the Ontario Home Builders' Association.





Level 3



Level 4



Levels 5-7



Tridel, for the fourth consecutive year, has been ranked number one in the 2009 J.D. Power and Associates New Condominium Builder Customer Satisfaction Study in the GTA.



2010 Ontario High-Rise Builder of the Year by Tarion.



2010 High-Rise Green Builder of the Year by BILD.



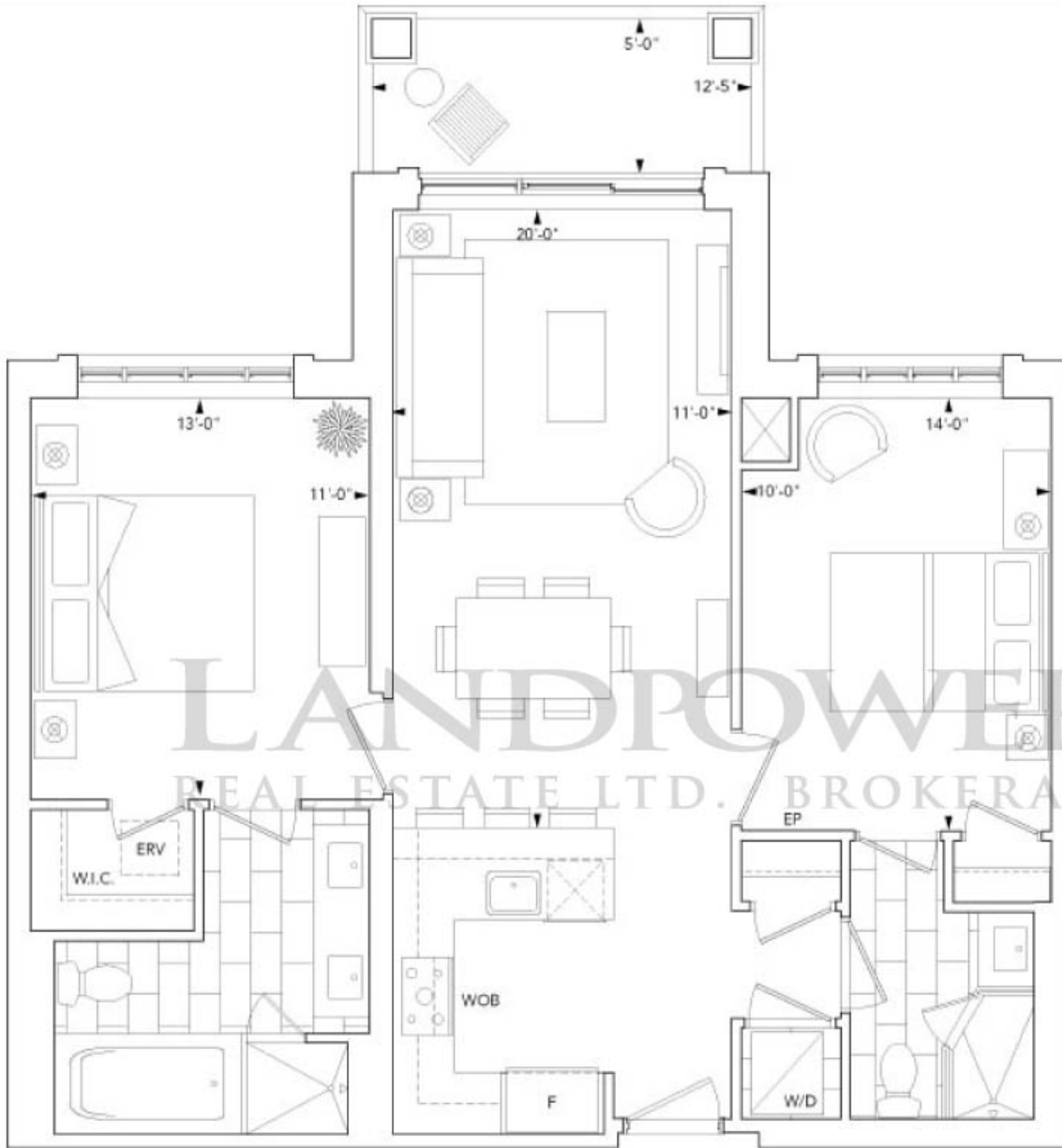
2009 Home Builder of the Year by the Ontario Home Builders' Association.



Suite 2A2

2 Bedroom

Starting from \$590,000* - 943 sq.ft.*
Tentative Occupancy Spring 2013



LANDPOWER
REAL ESTATE LTD. BROKERAGE



Levels 5-7



Tridel, for the fourth consecutive year, has been ranked number one in the 2009 J.D. Power and Associates New Condominium Builder Customer Satisfaction Study in the GTA.



2010 Ontario High-Rise Builder of the Year by Tarion.



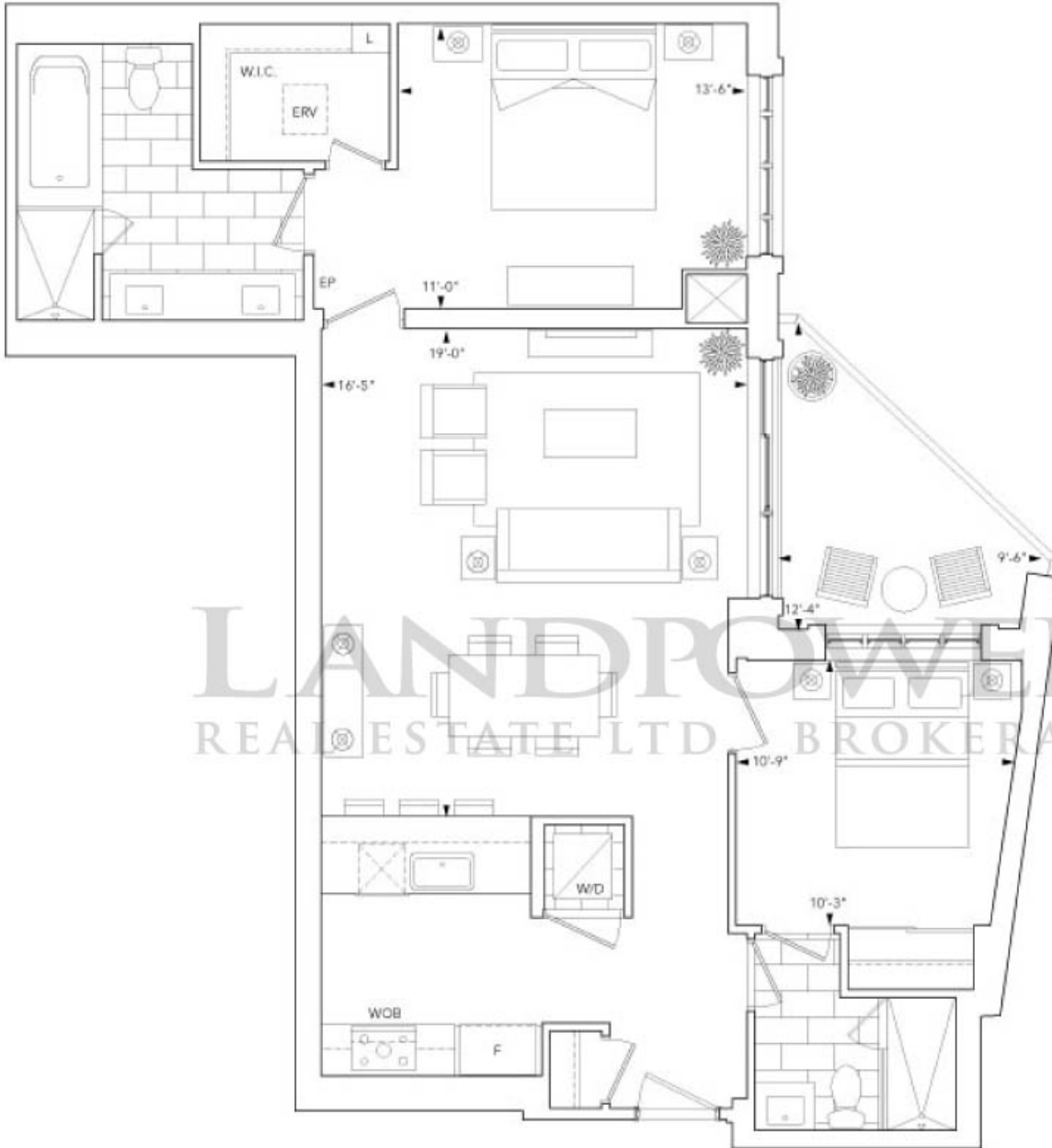
2010 High-Rise Green Builder of the Year by BILD.



2009 Home Builder of the Year by the Ontario Home Builders' Association.



All dimensions are approximate and subject to normal construction variances. Dimensions may exceed the useable floor area. Sizes and specifications subject to change without notice. Furniture is displayed for illustration purposes only and does not necessarily reflect the electrical plan for the suite. Suites are sold unfurnished. E. & O.E. September 29, 2010.



LANDPOWER
REAL ESTATE LTD. BROKERAGE



Tridel, for the fourth consecutive year, has been ranked number one in the 2009 J.D. Power and Associates New Condominium Builder Customer Satisfaction Study in the GTA.



2010 Ontario High-Rise Builder of the Year by Tarion.



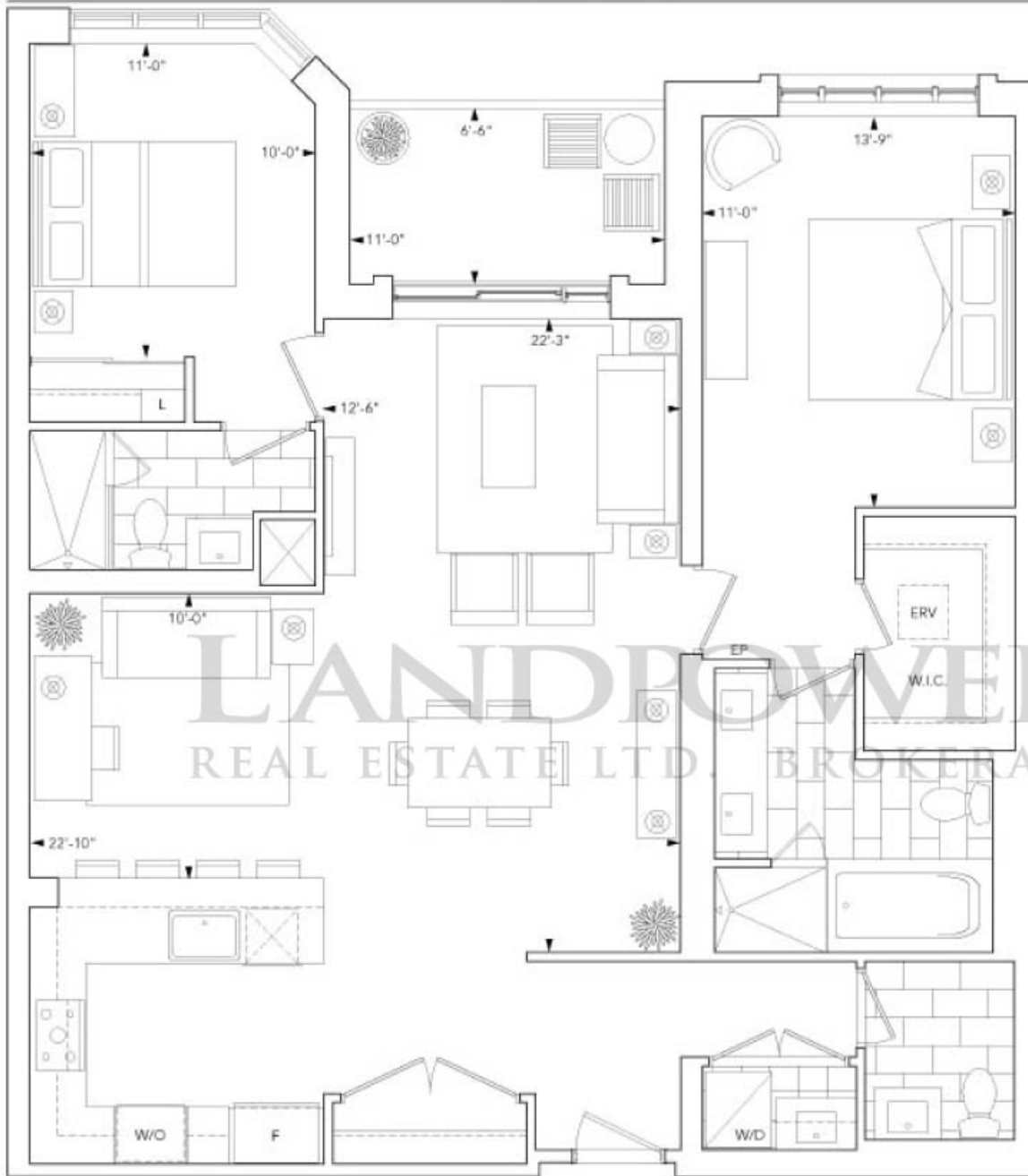
2010 High-Rise Green Builder of the Year by BILD.



2009 Home Builder of the Year by the Ontario Home Builders' Association.



All dimensions are approximate and subject to normal construction variances. Dimensions may exceed the useable floor area. Sizes and specifications subject to change without notice. Furniture is displayed for illustration purposes only and does not necessarily reflect the electrical plan for the suite. Suites are sold unfurnished. E. & O.E. September 29, 2010.



Tridel, for the fourth consecutive year, has been ranked number one in the 2009 J.D. Power and Associates New Condominium Builder Customer Satisfaction Study in the GTA.



2010 Ontario High-Rise Builder of the Year by Tarion.



2010 High-Rise Green Builder of the Year by BILD.



2009 Home Builder of the Year by the Ontario Home Builders' Association.





Tridel, for the fourth consecutive year, has been ranked number one in the 2009 J.D. Power and Associates New Condominium Builder Customer Satisfaction Study in the GTA.



2010 Ontario High-Rise Builder of the Year by Tarion.

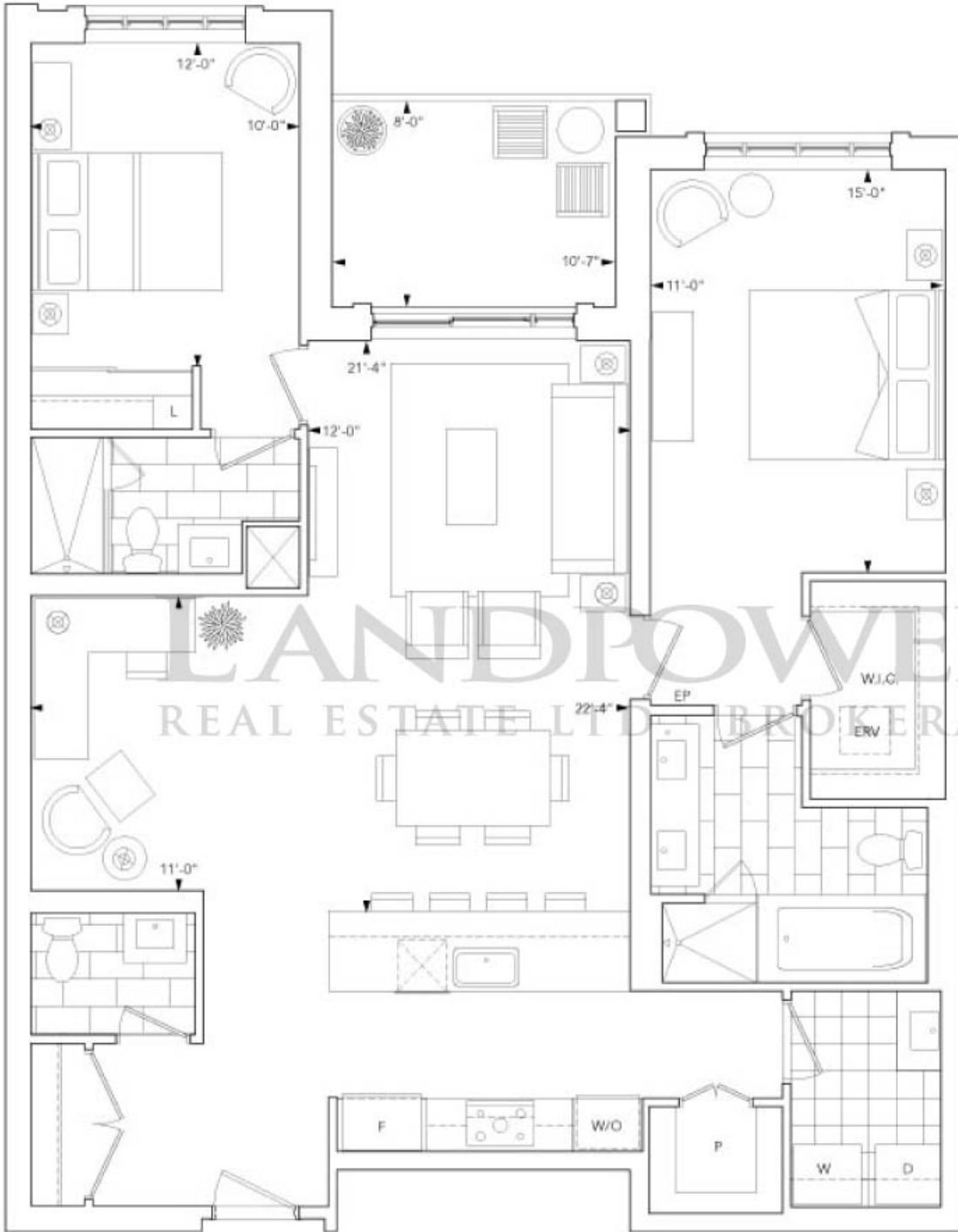


2010 High-Rise Green Builder of the Year by BILD.



2009 Home Builder of the Year by the Ontario Home Builders' Association.





LANDPOWER
REAL ESTATE LTD. BROKERAGE



Tridel, for the fourth consecutive year, has been ranked number one in the 2009 J.D. Power and Associates New Condominium Builder Customer Satisfaction Study in the GTA.



2010 Ontario High-Rise Builder of the Year by Tarion.



2010 High-Rise Green Builder of the Year by BILD.



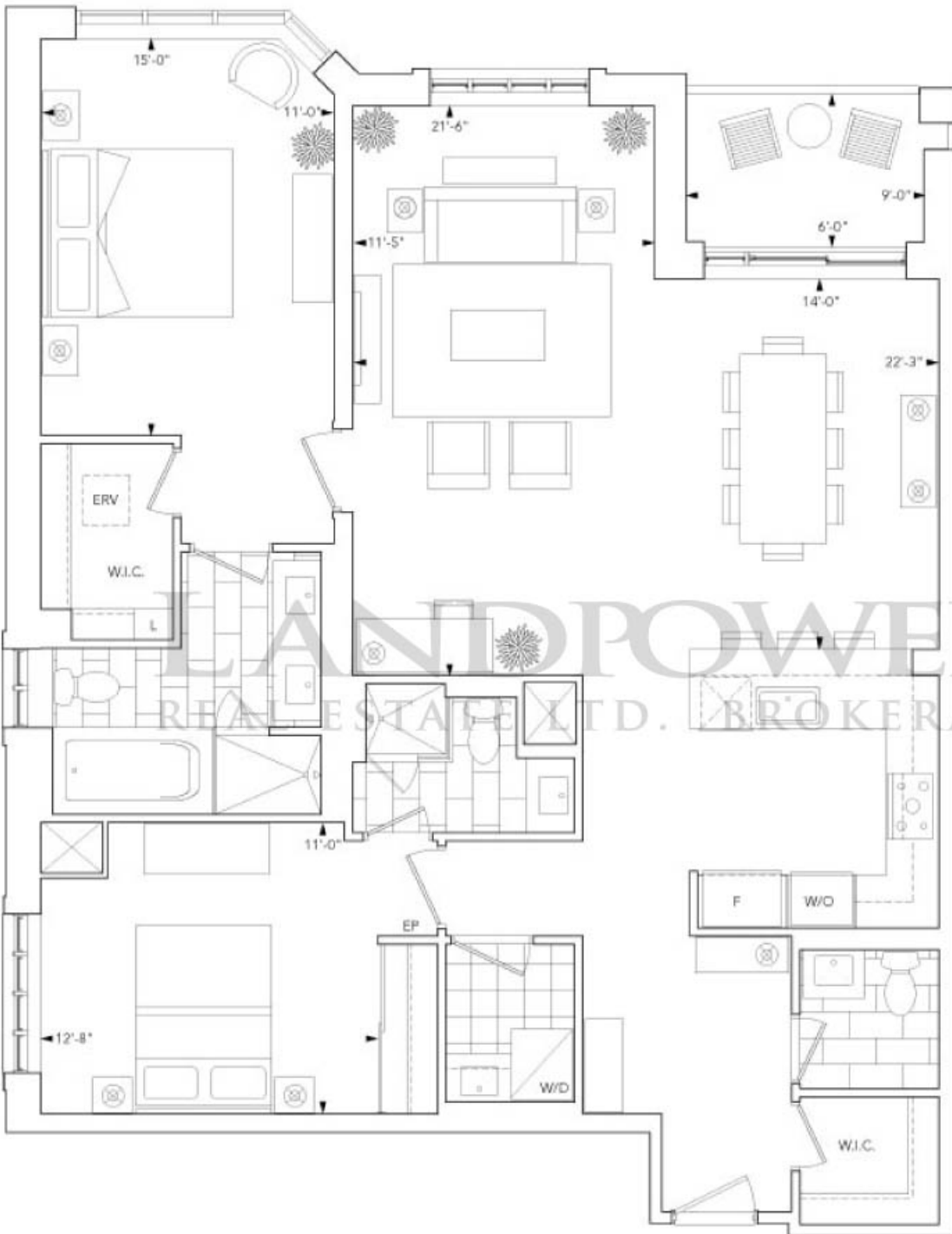
2009 Home Builder of the Year by the Ontario Home Builders' Association.



Suite 2H

2 Bedroom

Starting from \$940,000* - 1,422 sq.ft.*
Tentative Occupancy Spring 2013



Tridel, for the fourth consecutive year, has been ranked number one in the 2009 J.D. Power and Associates New Condominium Builder Customer Satisfaction Study in the GTA.



2010 Ontario High-Rise Builder of the Year by Tarion.



2010 High-Rise Green Builder of the Year by BILD.



2009 Home Builder of the Year by the Ontario Home Builders' Association.

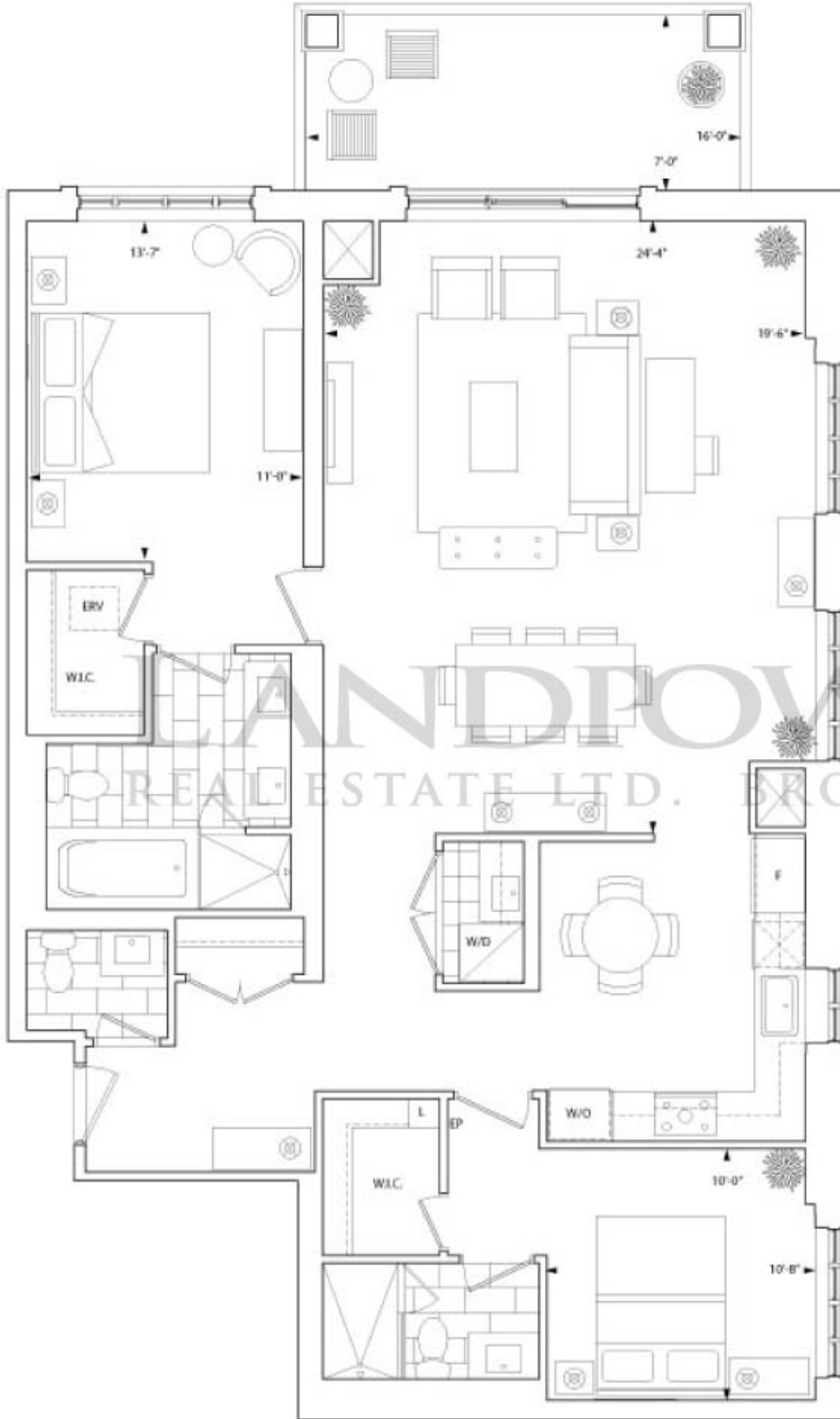


All dimensions are approximate and subject to normal construction variances. Dimensions may exceed the useable floor area. Sizes and specifications subject to change without notice. Furniture is displayed for illustration purposes only and does not necessarily reflect the electrical plan for the suite. Suites are sold unfurnished. E. & O.E. September 29, 2010.

Suite 2K

2 Bedroom

Starting from \$985,000* -1,489 sq.ft.*
Tentative Occupancy Spring 2013



Tridel, for the fourth consecutive year, has been ranked number one in the 2009 J.D. Power and Associates New Condominium Builder Customer Satisfaction Study in the GTA.



2010 Ontario High-Rise Builder of the Year by Tarion.

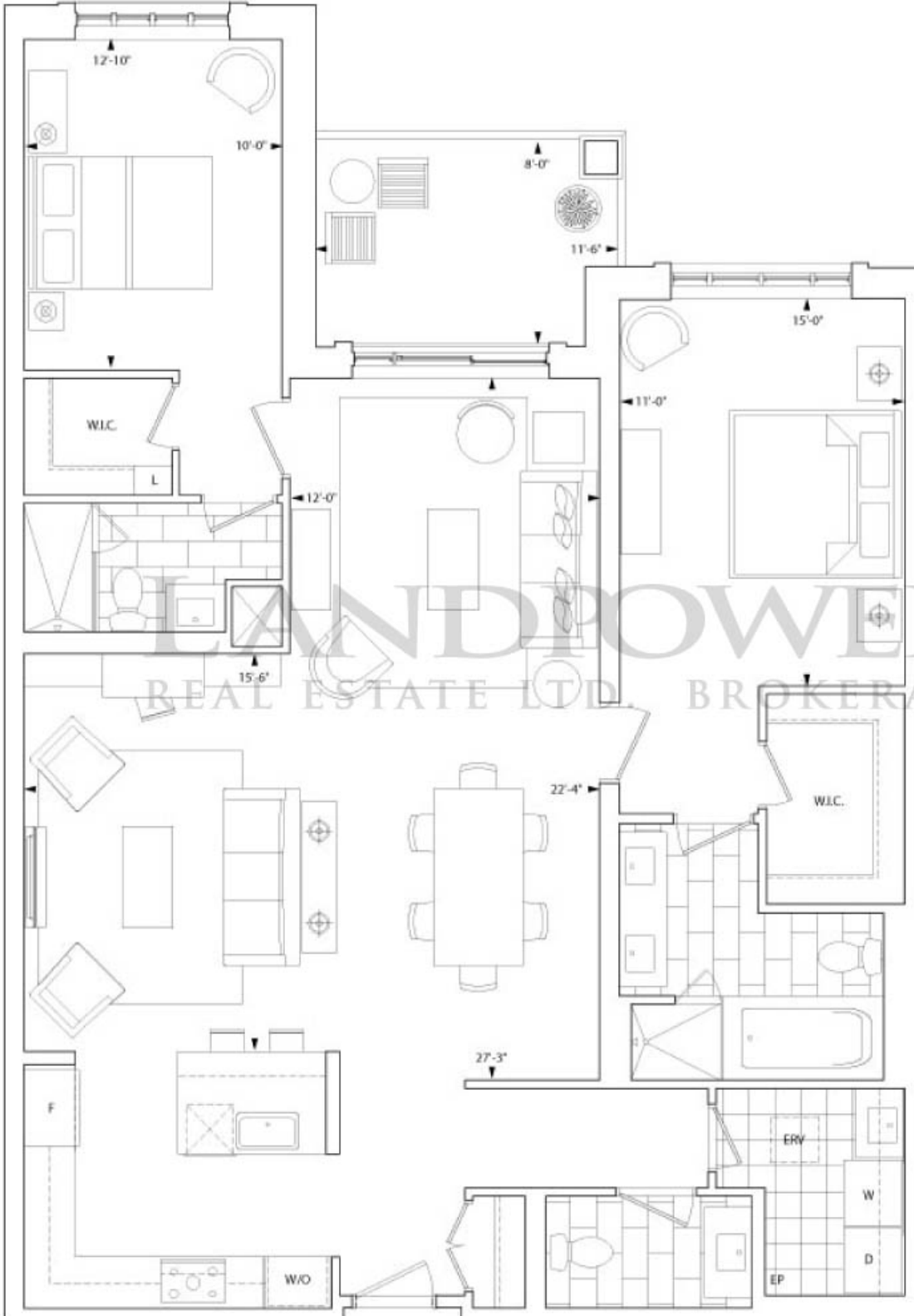


2010 High-Rise Green Builder of the Year by BILD.



2009 Home Builder of the Year by the Ontario Home Builders' Association.





Tridel, for the fourth consecutive year, has been ranked number one in the 2009 J.D. Power and Associates New Condominium Builder Customer Satisfaction Study in the GTA.



2010 Ontario High-Rise Builder of the Year by Tarion.

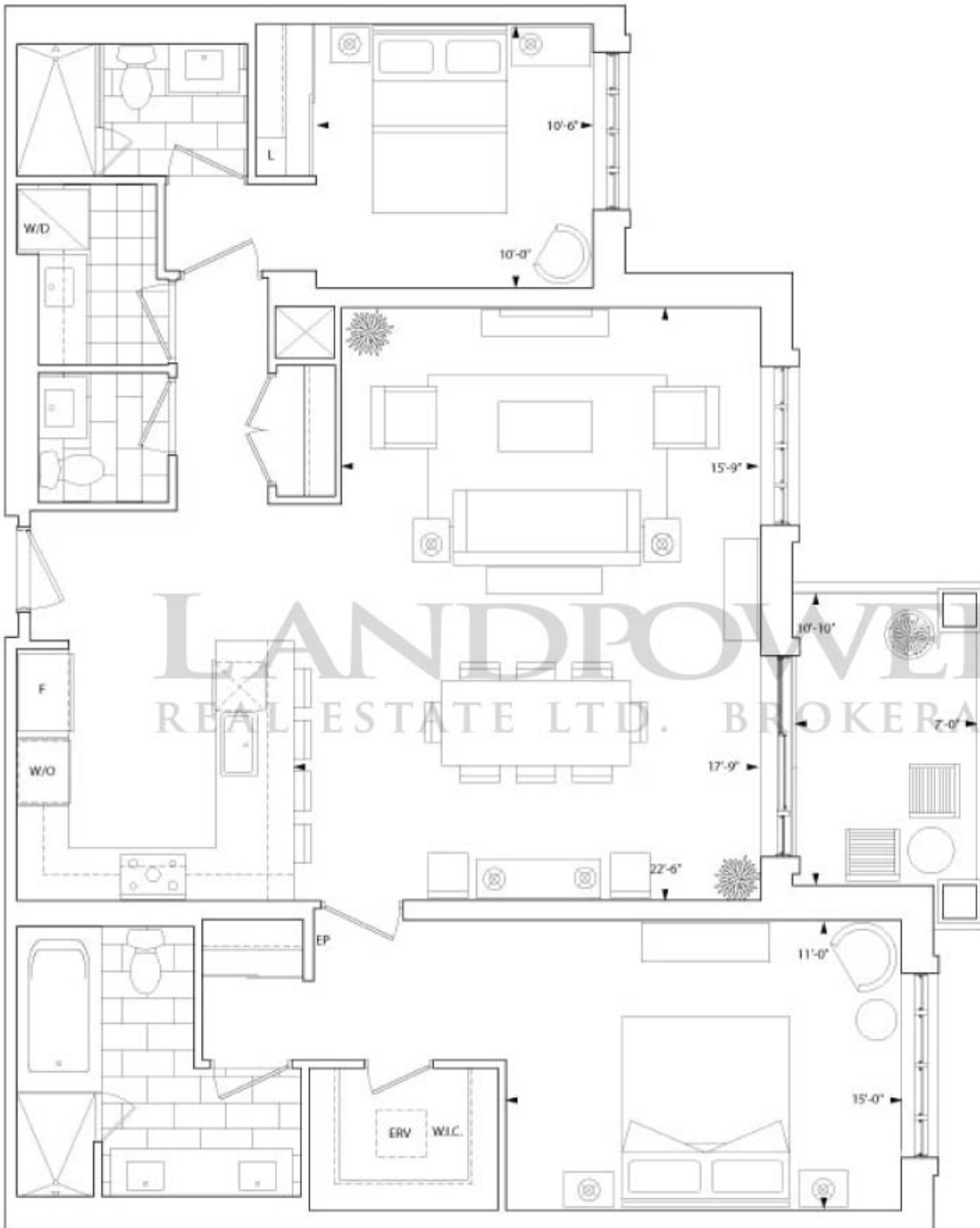


2010 High-Rise Green Builder of the Year by BILD.



2009 Home Builder of the Year by the Ontario Home Builders' Association.





LANDPOWER
REAL ESTATE LTD. BROKERAGE



Tridel, for the fourth consecutive year, has been ranked number one in the 2009 J.D. Power and Associates New Condominium Builder Customer Satisfaction Study in the GTA.



2010 Ontario High-Rise Builder of the Year by Tarion.

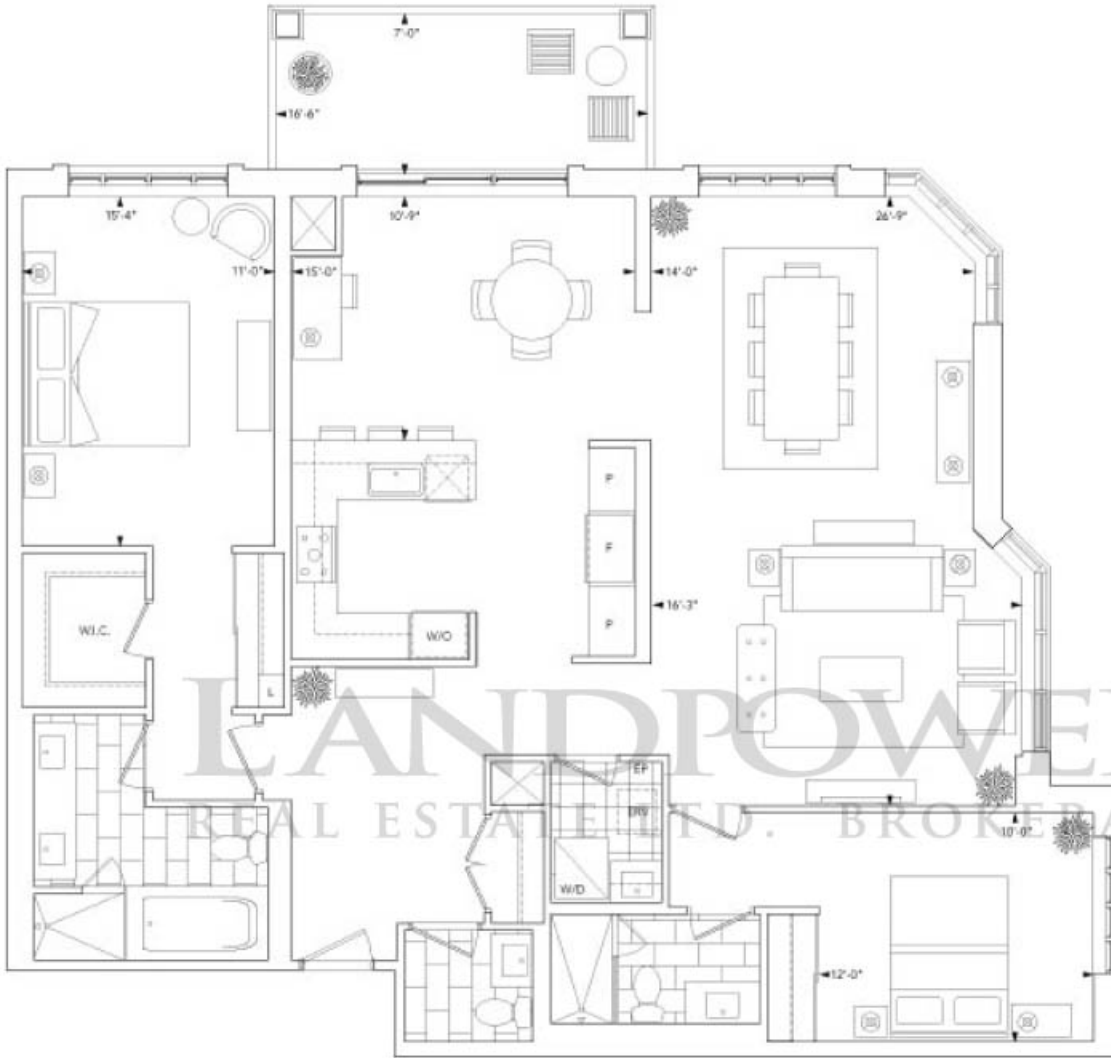


2010 High-Rise Green Builder of the Year by BILD.



2009 Home Builder of the Year by the Ontario Home Builders' Association.





LANDPOWER
REAL ESTATE LTD. BROKERAGE



Tridel, for the fourth consecutive year, has been ranked number one in the 2009 J.D. Power and Associates New Condominium Builder Customer Satisfaction Study in the GTA.



2010 Ontario High-Rise Builder of the Year by Tarion.

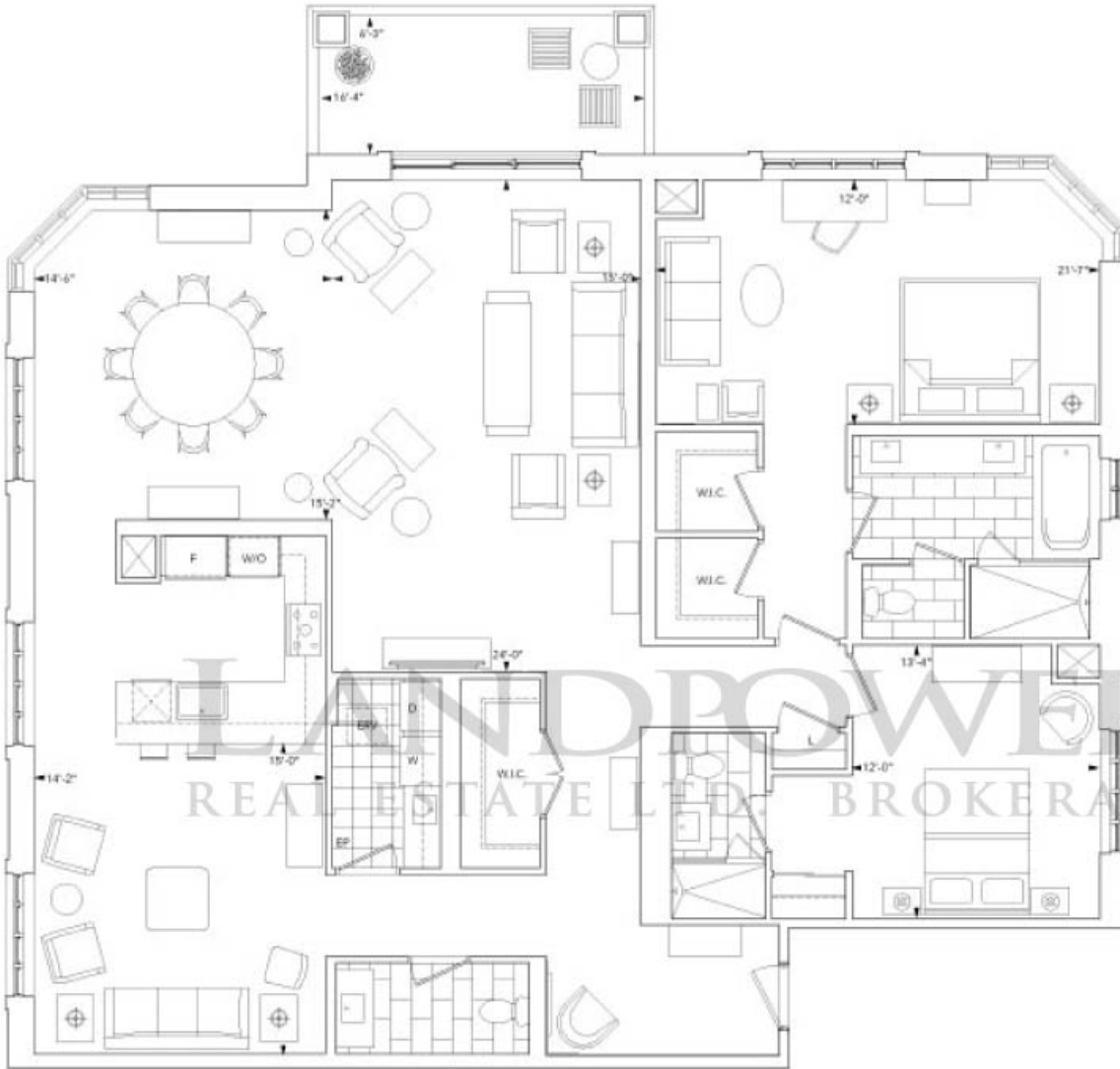


2010 High-Rise Green Builder of the Year by BILD.



2009 Home Builder of the Year by the Ontario Home Builders' Association.





LANDPOWER
REAL ESTATE LTD. BROKERAGE



Tridel, for the fourth consecutive year, has been ranked number one in the 2009 J.D. Power and Associates New Condominium Builder Customer Satisfaction Study in the GTA.



2010 Ontario High-Rise Builder of the Year by Tarion.



2010 High-Rise Green Builder of the Year by BILD.



2009 Home Builder of the Year by the Ontario Home Builders' Association.

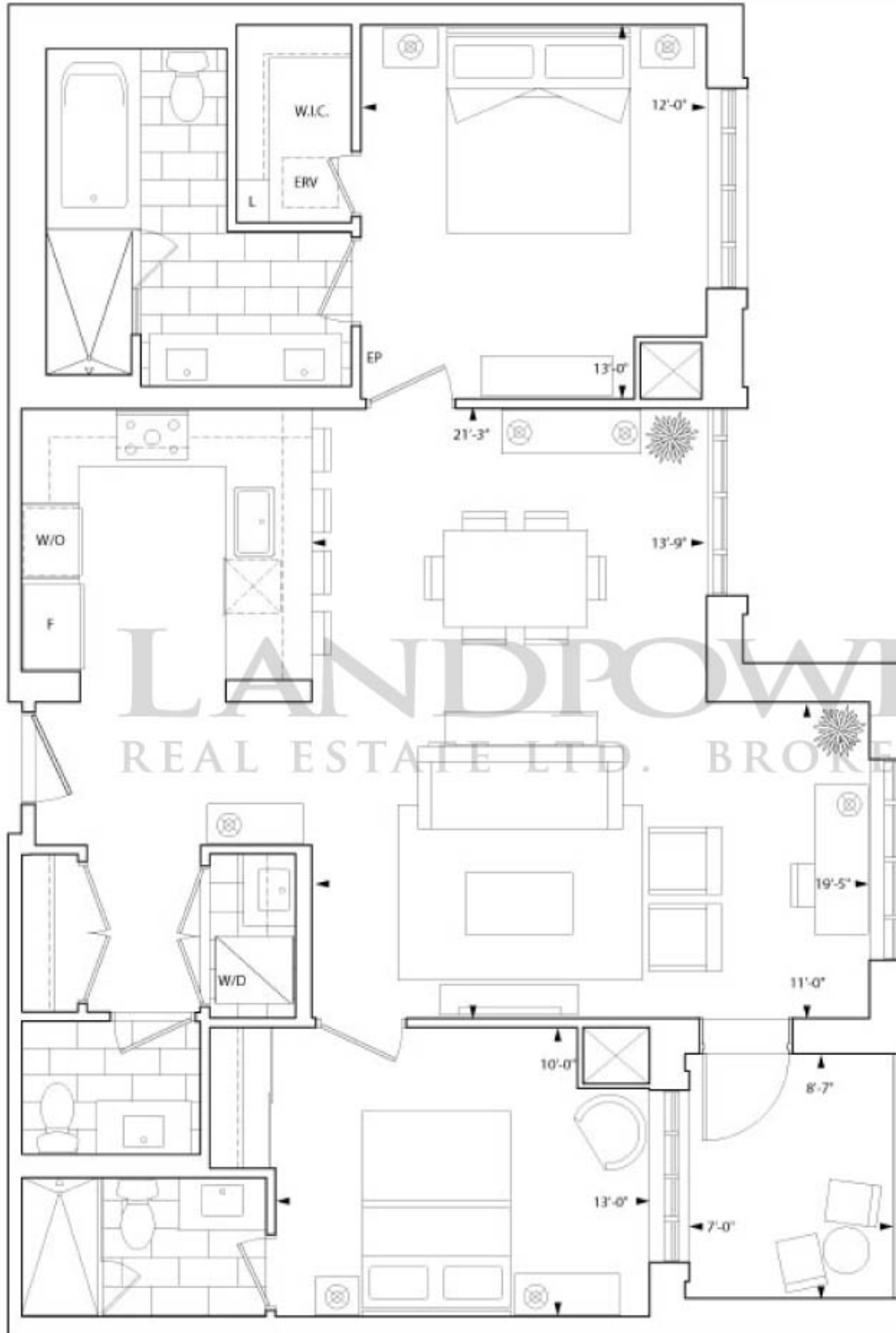


Suite 2D

2 Bedroom

Starting from \$830,000* - 1,211 sq.ft.*

Tentative Occupancy Spring 2013



LANDPOWER
REAL ESTATE LTD. BROKERAGE



Tridel, for the fourth consecutive year, has been ranked number one in the 2009 J.D. Power and Associates New Condominium Builder Customer Satisfaction Study in the GTA.



2010 Ontario High-Rise Builder of the Year by Tarion.



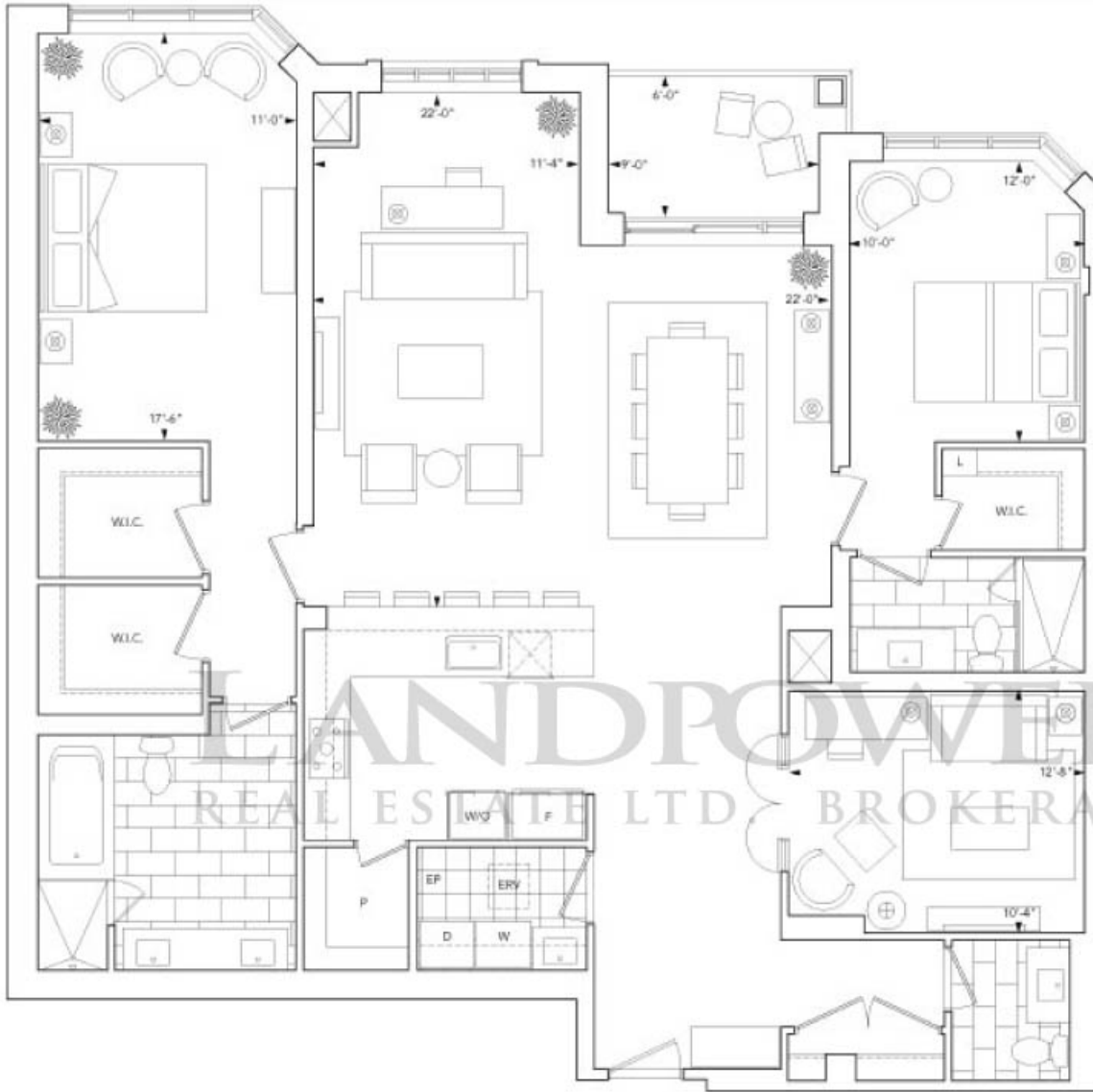
2010 High-Rise Green Builder of the Year by BILD.



2009 Home Builder of the Year by the Ontario Home Builders' Association.



All dimensions are approximate and subject to normal construction variances. Dimensions may exceed the useable floor area. Sizes and specifications subject to change without notice. Furniture is displayed for illustration purposes only and does not necessarily reflect the electrical plan for the suite. Suites are sold unfurnished. E. & O.E. September 29, 2010.



LANDPOWER REAL ESTATE LTD BROKERAGE



Tridel, for the fourth consecutive year, has been ranked number one in the 2009 J.D. Power and Associates New Condominium Builder Customer Satisfaction Study in the GTA.



2010 Ontario High-Rise Builder of the Year by Tarion.



2010 High-Rise Green Builder of the Year by BILD.



2009 Home Builder of the Year by the Ontario Home Builders' Association.



LANDFLOWER
REAL ESTATE LTD. BROKERAGE



Tridel, for the fourth consecutive year, has been ranked number one in the 2009 J.D. Power and Associates New Condominium Builder Customer Satisfaction Study in the GTA.



2010 Ontario High-Rise Builder of the Year by Tarion.



2010 High-Rise Green Builder of the Year by BILD.



2009 Home Builder of the Year by the Ontario Home Builders' Association.





LANDPOWER
REAL ESTATE LTD. BROKERAGE



Tridel, for the fourth consecutive year, has been ranked number one in the 2009 J.D. Power and Associates New Condominium Builder Customer Satisfaction Study in the GTA.



2010 Ontario High-Rise Builder of the Year by Tarion.

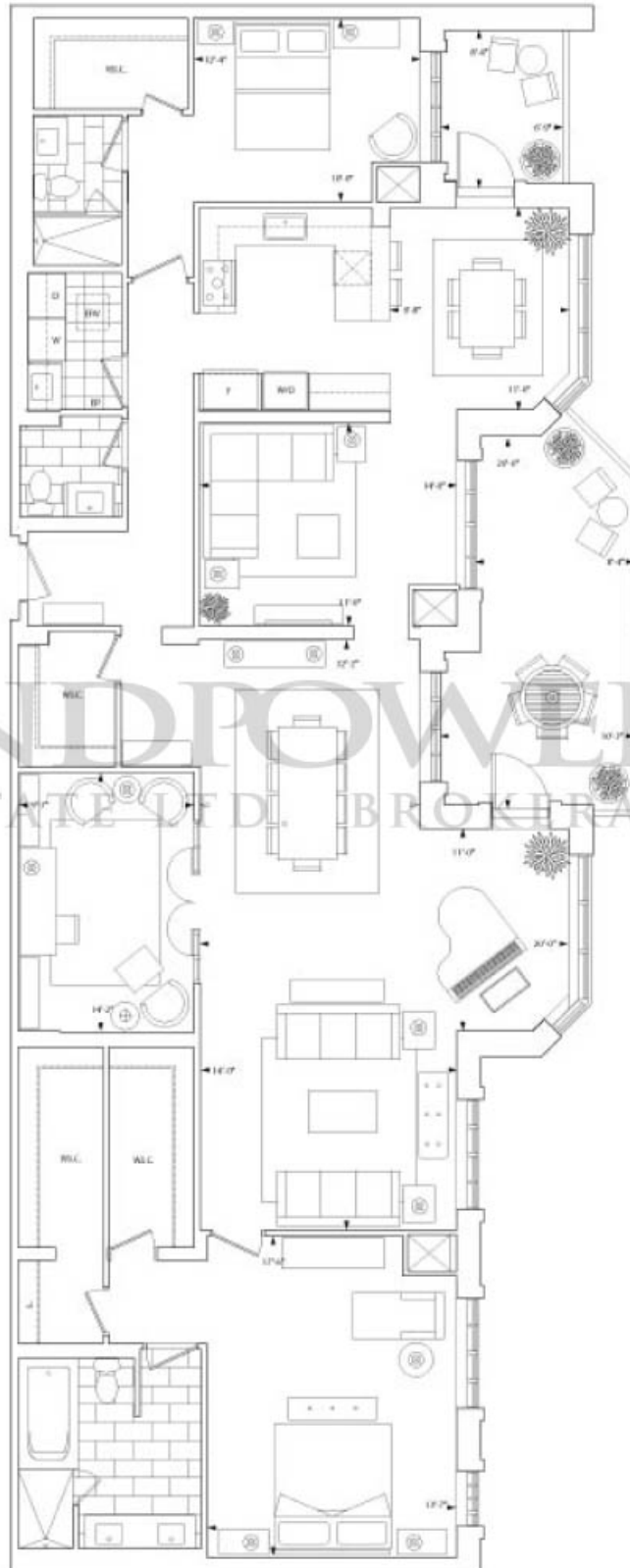


2010 High-Rise Green Builder of the Year by BILD.



2009 Home Builder of the Year by the Ontario Home Builders' Association.





Tridel, for the fourth consecutive year, has been ranked number one in the 2009 J.D. Power and Associates New Condominium Builder Customer Satisfaction Study in the GTA.



2010 Ontario High-Rise Builder of the Year by Tarion.

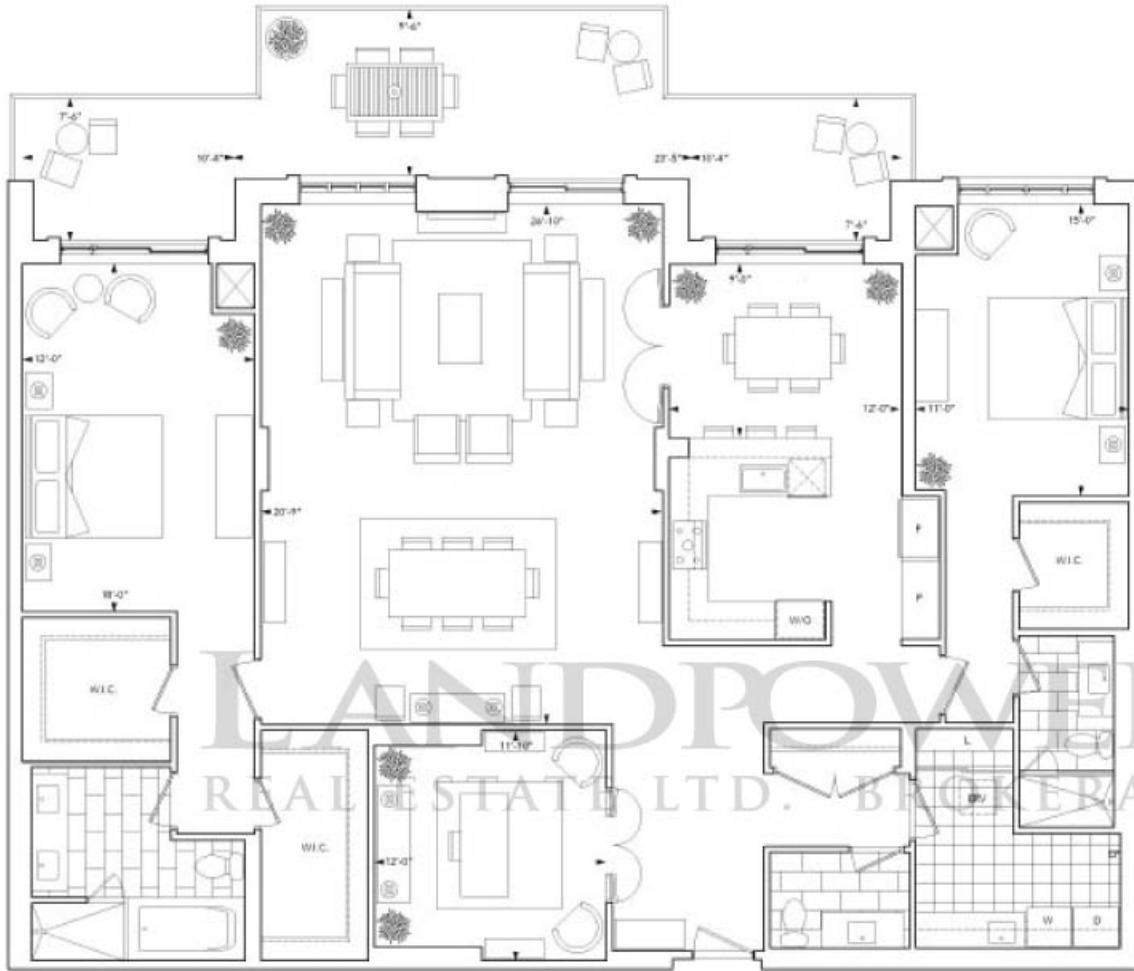


2010 High-Rise Green Builder of the Year by BILD.



2009 Home Builder of the Year by the Ontario Home Builders' Association.





Tridel, for the fourth consecutive year, has been ranked number one in the 2009 J.D. Power and Associates New Condominium Builder Customer Satisfaction Study in the GTA.



2010 Ontario High-Rise Builder of the Year by Tarion.

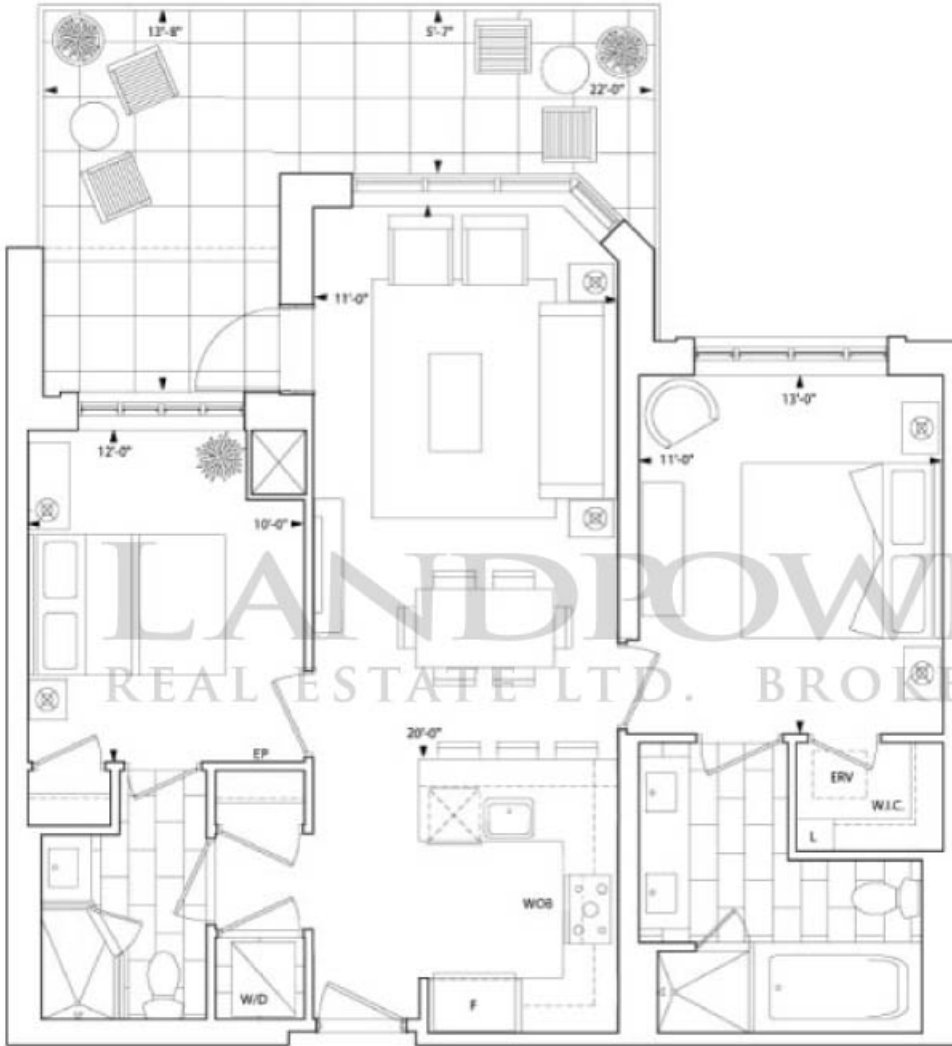


2010 High-Rise Green Builder of the Year by BILD.



2009 Home Builder of the Year by the Ontario Home Builders' Association.





Level 2



Tridel, for the fourth consecutive year, has been ranked number one in the 2009 J.D. Power and Associates New Condominium Builder Customer Satisfaction Study in the GTA.



2010 Ontario High-Rise Builder of the Year by Tarion.



2010 High-Rise Green Builder of the Year by BILD.



2009 Home Builder of the Year by the Ontario Home Builders' Association.

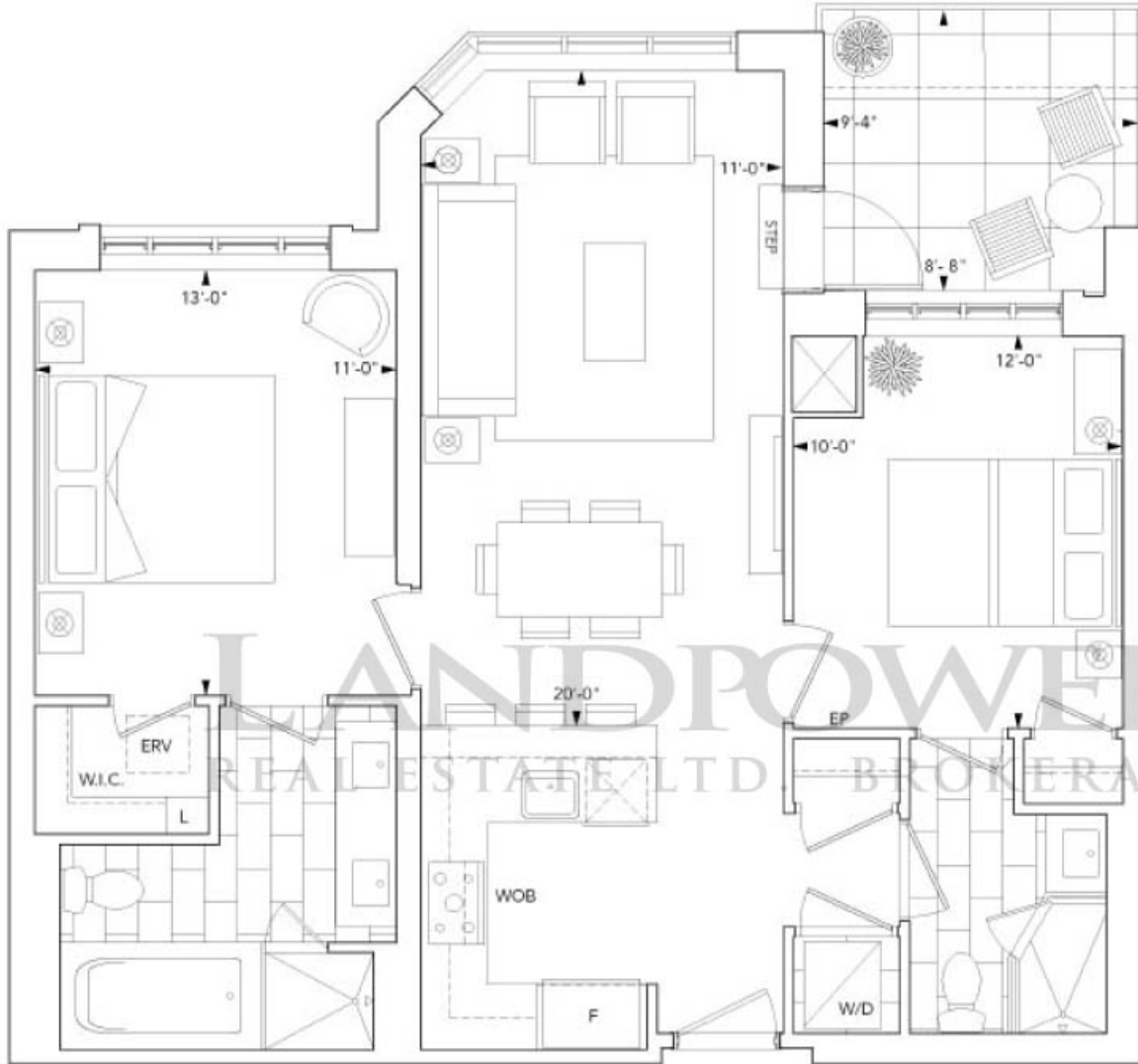


Suite 2A-R-T2

2 Bedroom

Starting from \$575,000* - 920 sq.ft.*

Tentative Occupancy Spring 2013



LAND POWER REAL ESTATE LTD BROKERAGE



Tridel, for the fourth consecutive year, has been ranked number one in the 2009 J.D. Power and Associates New Condominium Builder Customer Satisfaction Study in the GTA.



2010 Ontario High-Rise Builder of the Year by Tarion.

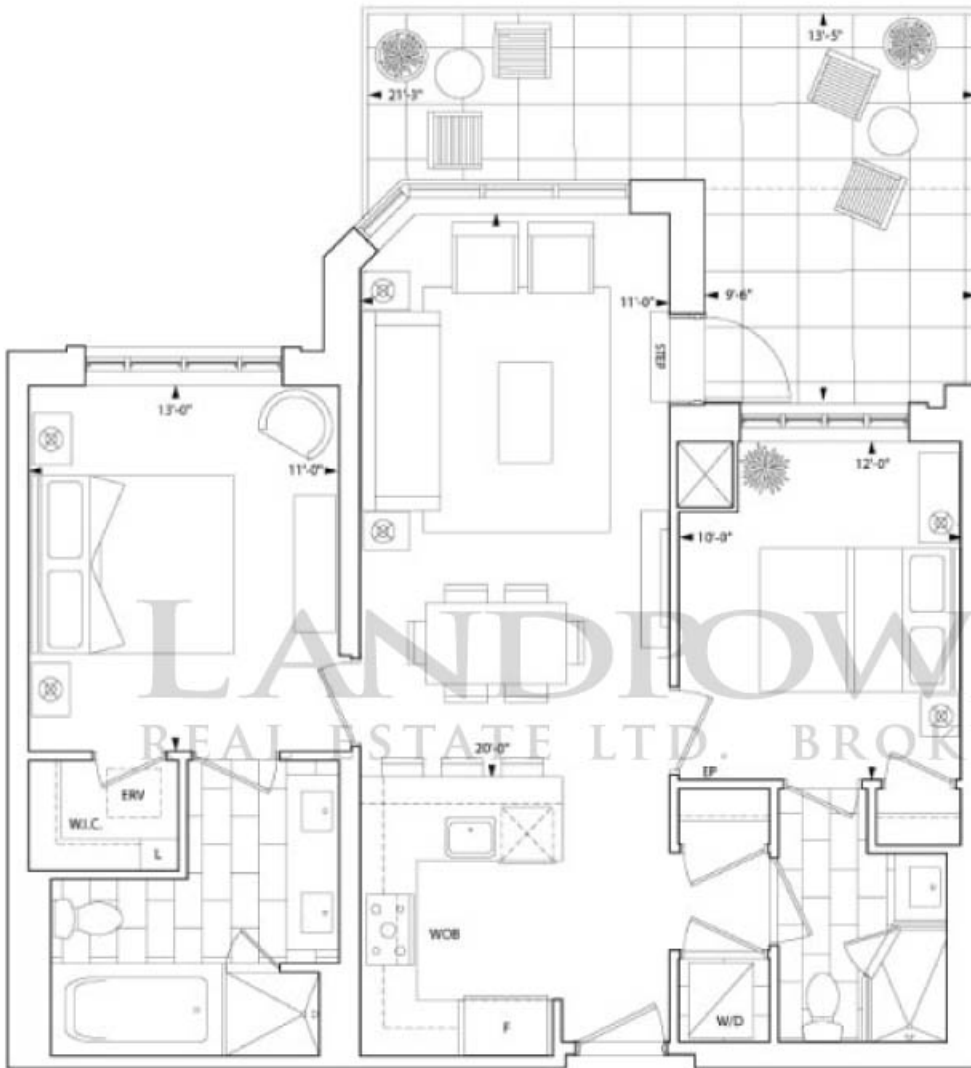


2010 High-Rise Green Builder of the Year by BILD.



2009 Home Builder of the Year by the Ontario Home Builders' Association.





Level 4



Tridel, for the fourth consecutive year, has been ranked number one in the 2009 J.D. Power and Associates New Condominium Builder Customer Satisfaction Study in the GTA.



2010 Ontario High-Rise Builder of the Year by Tarion.

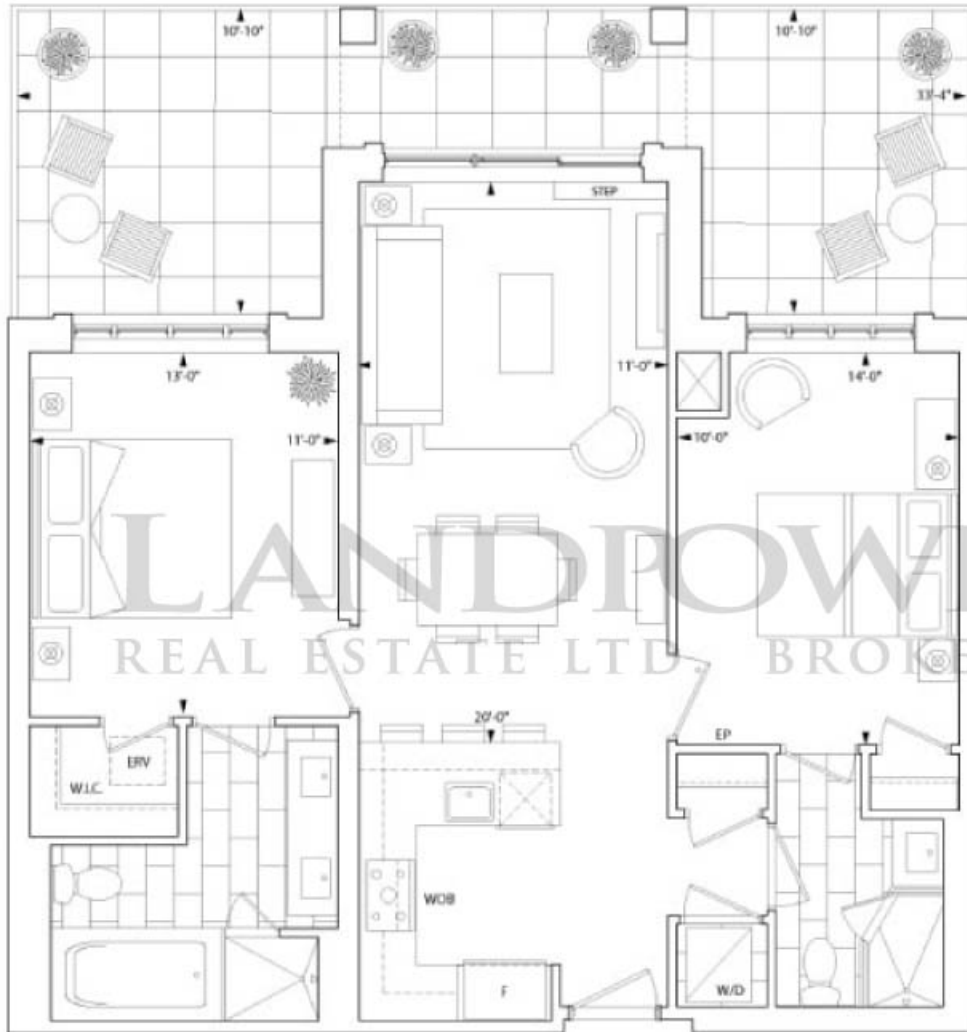


2010 High-Rise Green Builder of the Year by BILD.



2009 Home Builder of the Year by the Ontario Home Builders' Association.





Level 4



Tridel, for the fourth consecutive year, has been ranked number one in the 2009 J.D. Power and Associates New Condominium Builder Customer Satisfaction Study in the GTA.



2010 Ontario High-Rise Builder of the Year by Tarion.

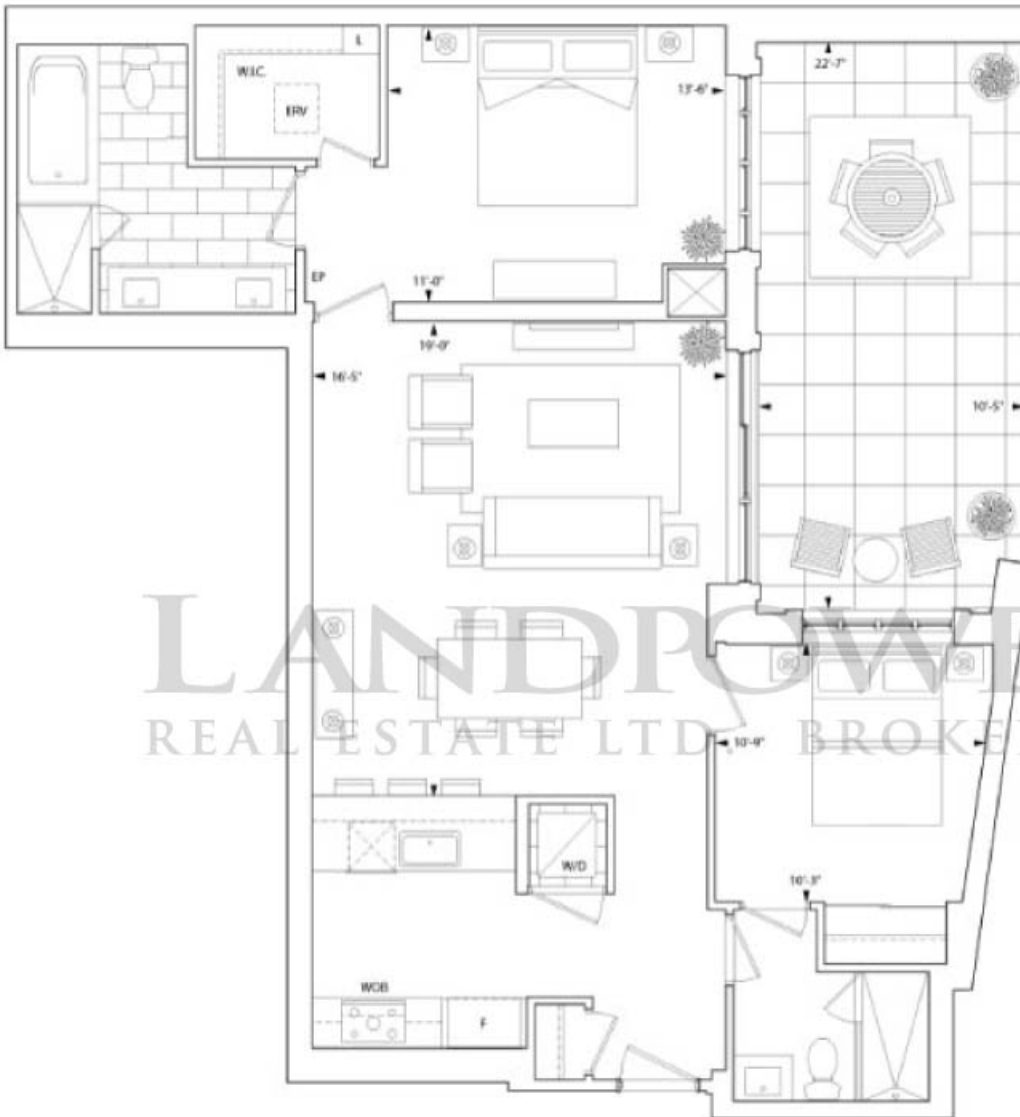


2010 High-Rise Green Builder of the Year by BILD.



2009 Home Builder of the Year by the Ontario Home Builders' Association.





LANDPOWER
REAL ESTATE LTD. BROKERAGE



Level 2



Tridel, for the fourth consecutive year, has been ranked number one in the 2009 J.D. Power and Associates New Condominium Builder Customer Satisfaction Study in the GTA.



2010 Ontario High-Rise Builder of the Year by Tarion.



2010 High-Rise Green Builder of the Year by BILD.



2009 Home Builder of the Year by the Ontario Home Builders' Association.



Suite 2J-T

2 Bedroom

Starting from \$900,000* - 1,443 sq.ft.*
Tentative Occupancy Spring 2013



LANDPOWER
REAL ESTATE LTD. BROKERAGE



Tridel, for the fourth consecutive year, has been ranked number one in the 2009 J.D. Power and Associates New Condominium Builder Customer Satisfaction Study in the GTA.



2010 Ontario High-Rise Builder of the Year by Tarion.



2010 High-Rise Green Builder of the Year by BILD.



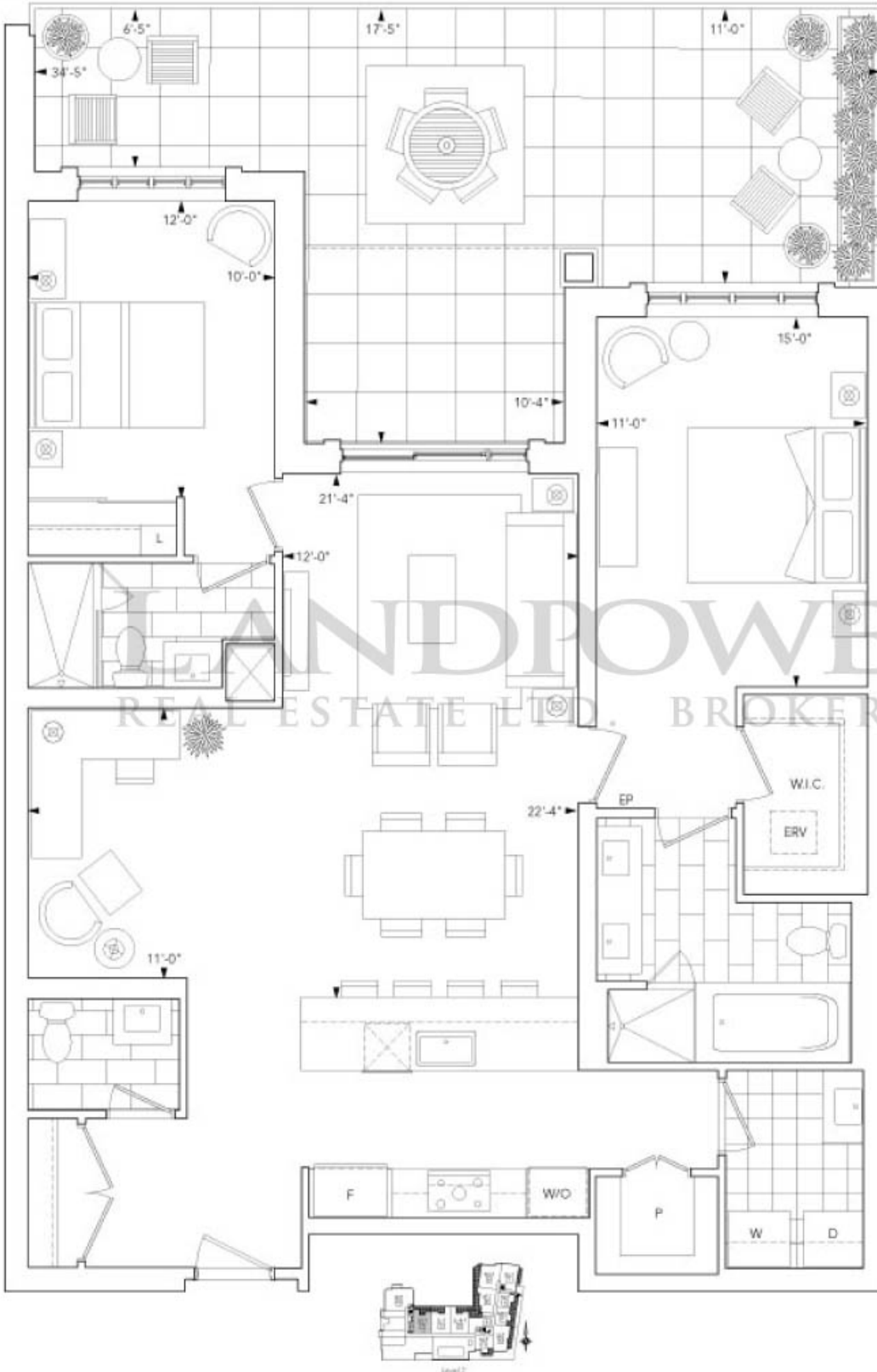
2009 Home Builder of the Year by the Ontario Home Builders' Association.



Level 2

All dimensions are approximate and subject to normal construction variances. Dimensions may exceed the useable floor area. Sizes and specifications subject to change without notice. Furniture is displayed for illustration purposes only and does not necessarily reflect the electrical plan for the suite. Suites are sold unfurnished. E. & O.E. September 29, 2010.





Tridel, for the fourth consecutive year, has been ranked number one in the 2009 J.D. Power and Associates New Condominium Builder Customer Satisfaction Study in the GTA.



2010 Ontario High-Rise Builder of the Year by Tarion.



2010 High-Rise Green Builder of the Year by BILD.



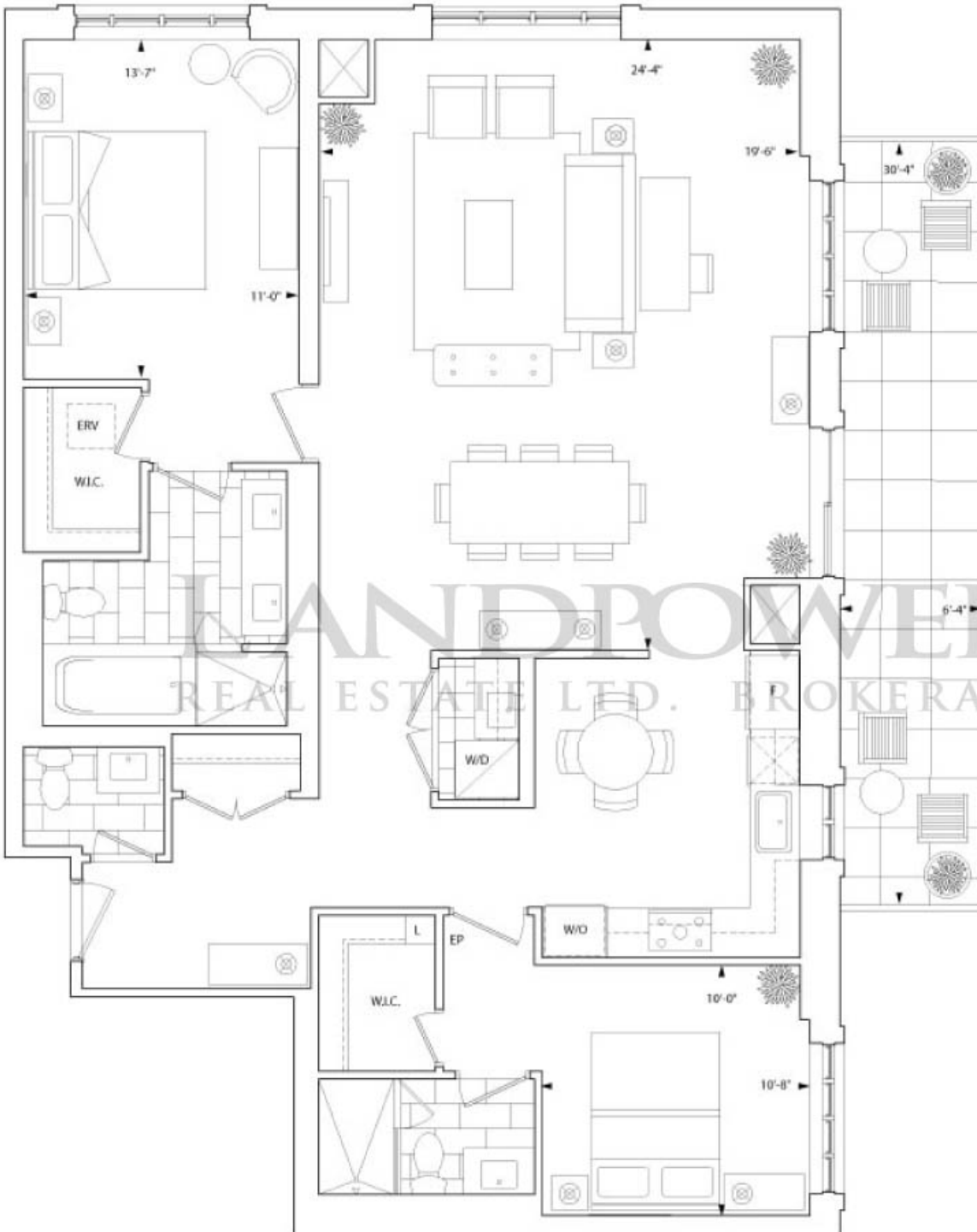
2009 Home Builder of the Year by the Ontario Home Builders' Association.



Suite 2K-T

2 Bedroom

Starting from \$990,000* - 1,489 sq.ft.*
Tentative Occupancy Spring 2013



Tridel, for the fourth consecutive year, has been ranked number one in the 2009 J.D. Power and Associates New Condominium Builder Customer Satisfaction Study in the GTA.



2010 Ontario High-Rise Builder of the Year by Tarion.

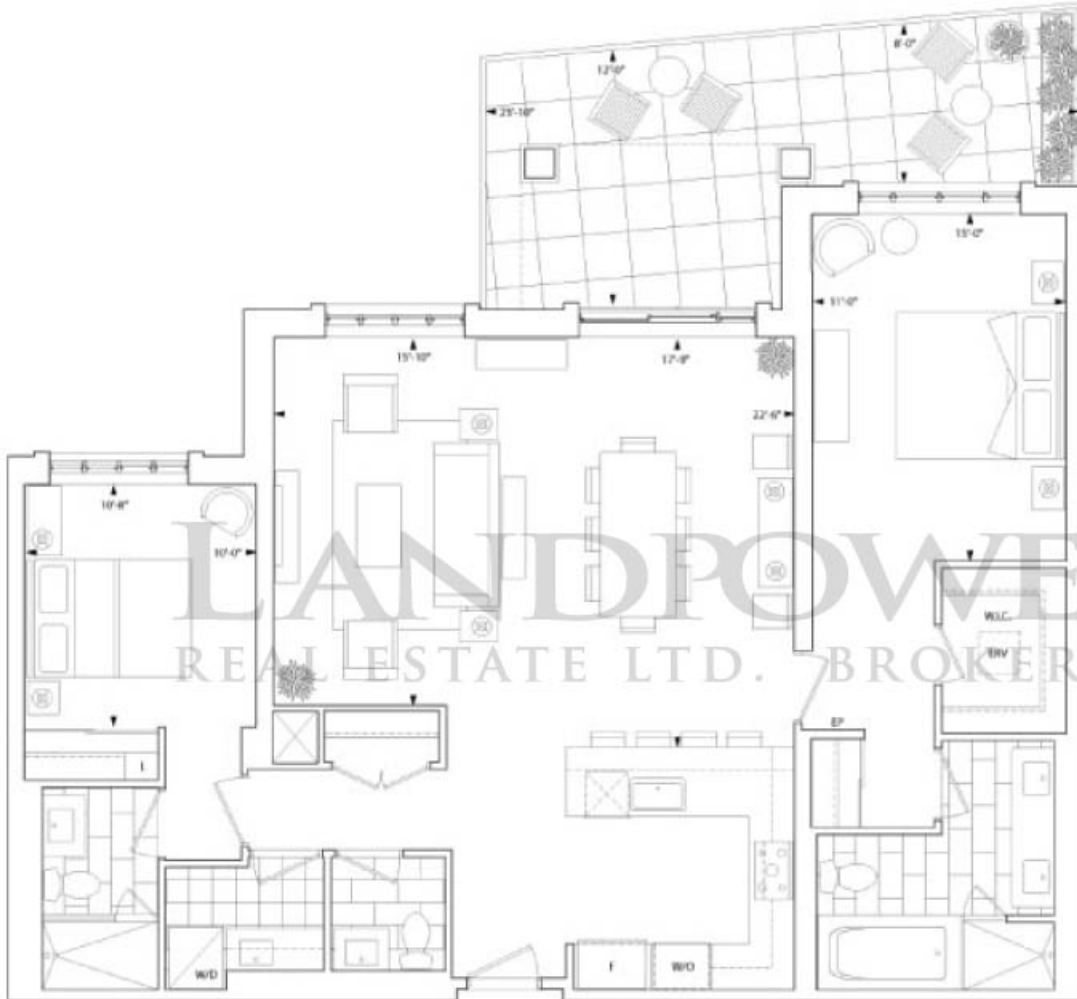


2010 High-Rise Green Builder of the Year by BILD.



2009 Home Builder of the Year by the Ontario Home Builders' Association.





Level 2



Tridel, for the fourth consecutive year, has been ranked number one in the 2009 J.D. Power and Associates New Condominium Builder Customer Satisfaction Study in the GTA.



2010 Ontario High-Rise Builder of the Year by Tarion.

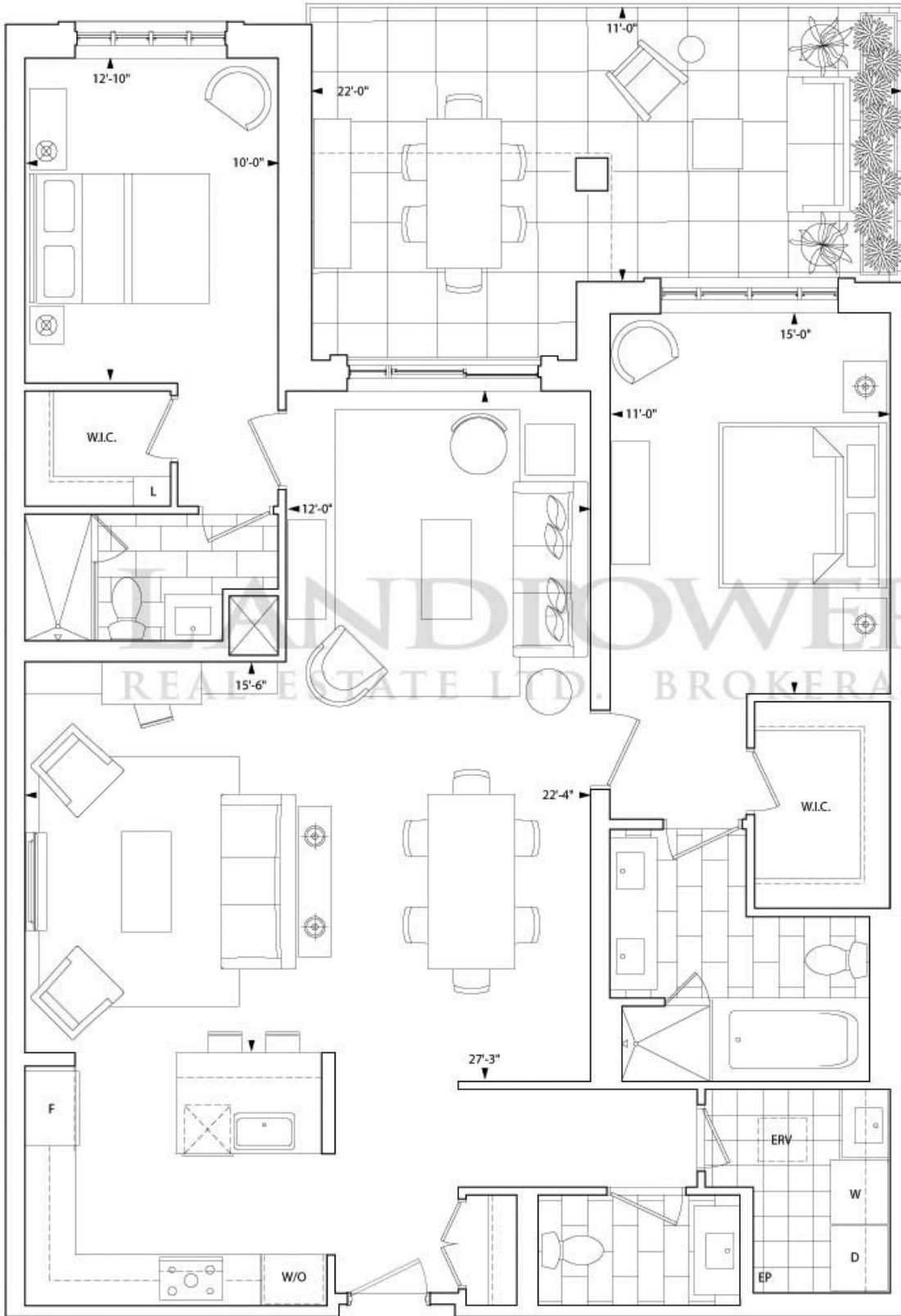


2010 High-Rise Green Builder of the Year by BILD.

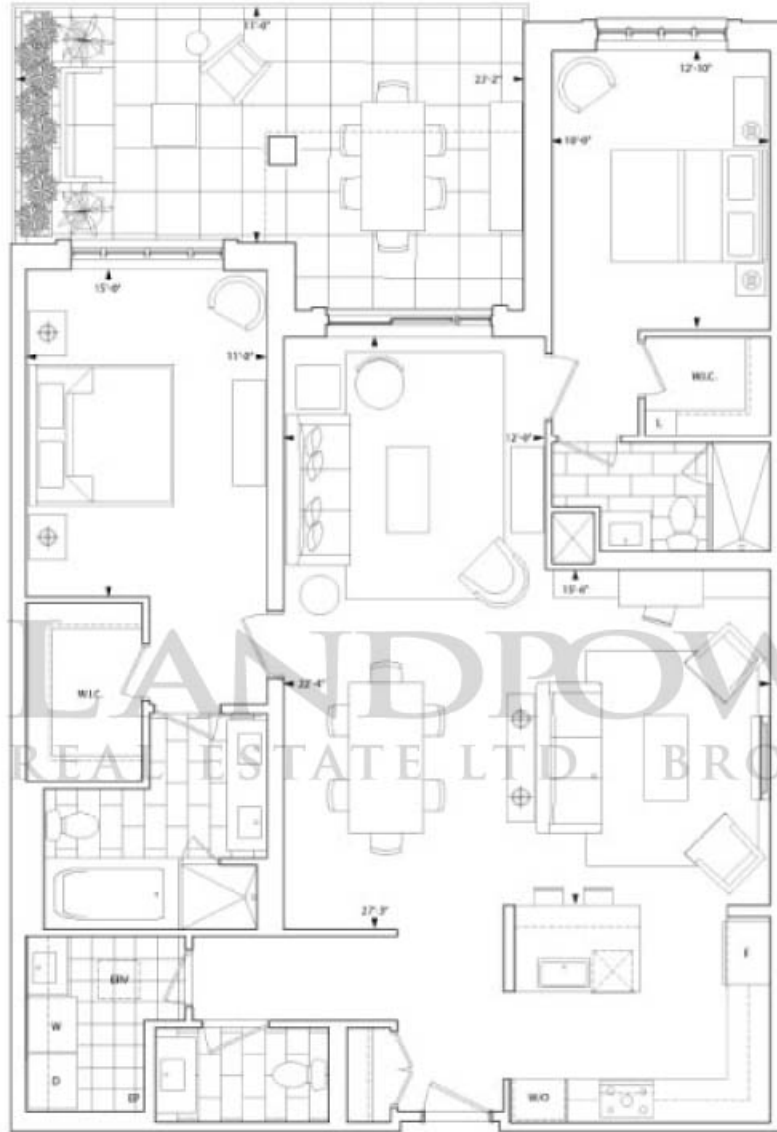


2009 Home Builder of the Year by the Ontario Home Builders' Association.





All dimensions are approximate and subject to normal construction variances. Dimensions may exceed the useable floor area. Sizes and specifications subject to change without notice. Furniture is displayed for illustration purposes only and does not necessarily reflect the electrical plan for the suite. Suites are sold unfinished. E. & O.E. March 21, 2011. Tridel® and Tridel Built for Life® are registered trademarks of Tridel and used under license© Tridel 2011.



LANDPOWER
REAL ESTATE LTD. BROKERAGE



Level 2



Tridel, for the fourth consecutive year, has been ranked number one in the 2009 J.D. Power and Associates New Condominium Builder Customer Satisfaction Study in the GTA.



2010 Ontario High-Rise Builder of the Year by Tarion.

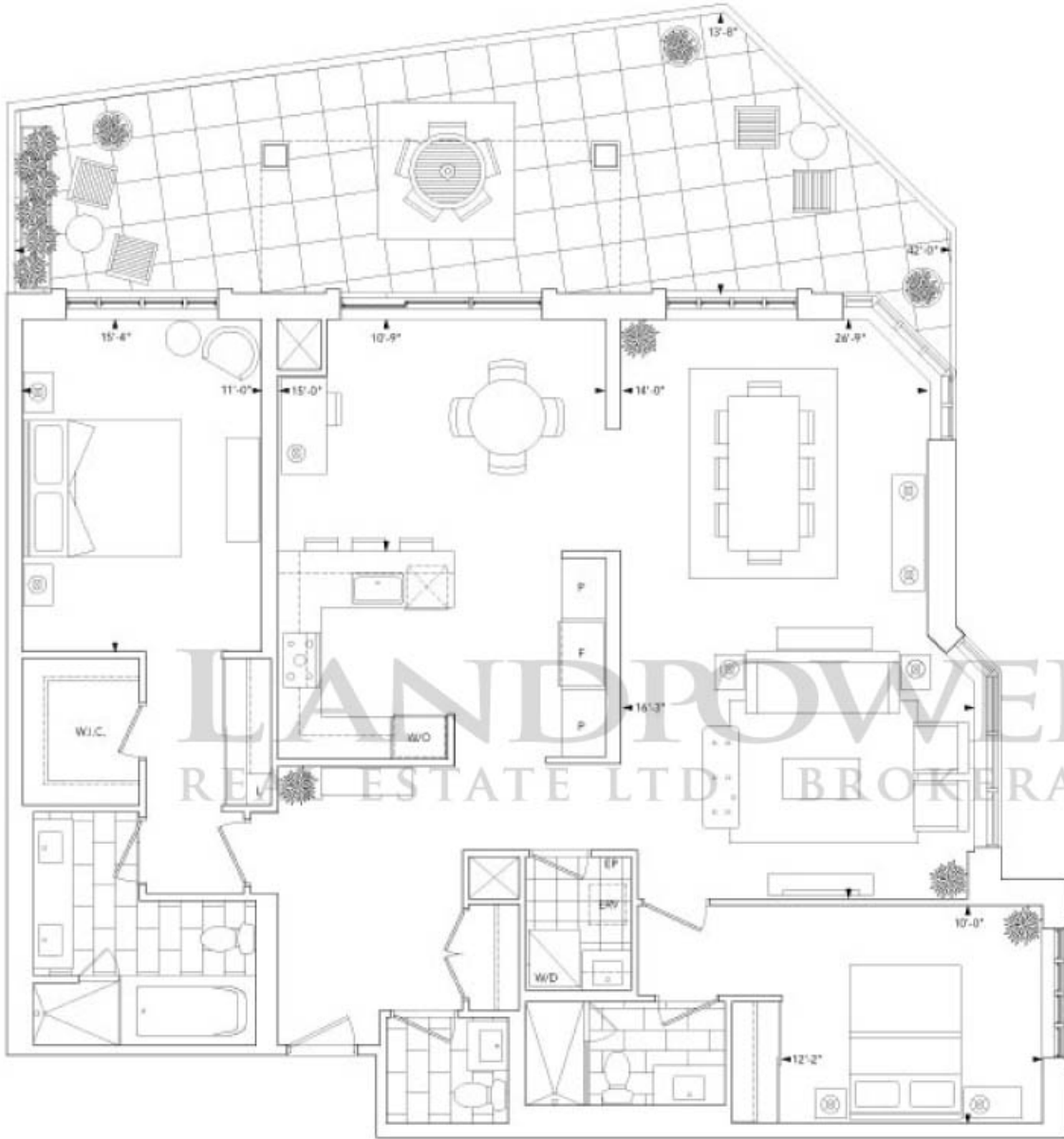


2010 High-Rise Green Builder of the Year by BILD.



2009 Home Builder of the Year by the Ontario Home Builders' Association.





Tridel, for the fourth consecutive year, has been ranked number one in the 2009 J.D. Power and Associates New Condominium Builder Customer Satisfaction Study in the GTA.



2010 Ontario High-Rise Builder of the Year by Tarion.



2010 High-Rise Green Builder of the Year by BILD.



2009 Home Builder of the Year by the Ontario Home Builders' Association.



Suite 2P-T

2 Bedroom

Starting from \$1,365,000* - 1,786 sq.ft.*

Tentative Occupancy Spring 2013



LANDPOWER
REAL ESTATE LTD. BROKERAGE



Tridel, for the fourth consecutive year, has been ranked number one in the 2009 J.D. Power and Associates New Condominium Builder Customer Satisfaction Study in the GTA.



2010 Ontario High-Rise Builder of the Year by Tarion.



2010 High-Rise Green Builder of the Year by BILD.



2009 Home Builder of the Year by the Ontario Home Builders' Association.

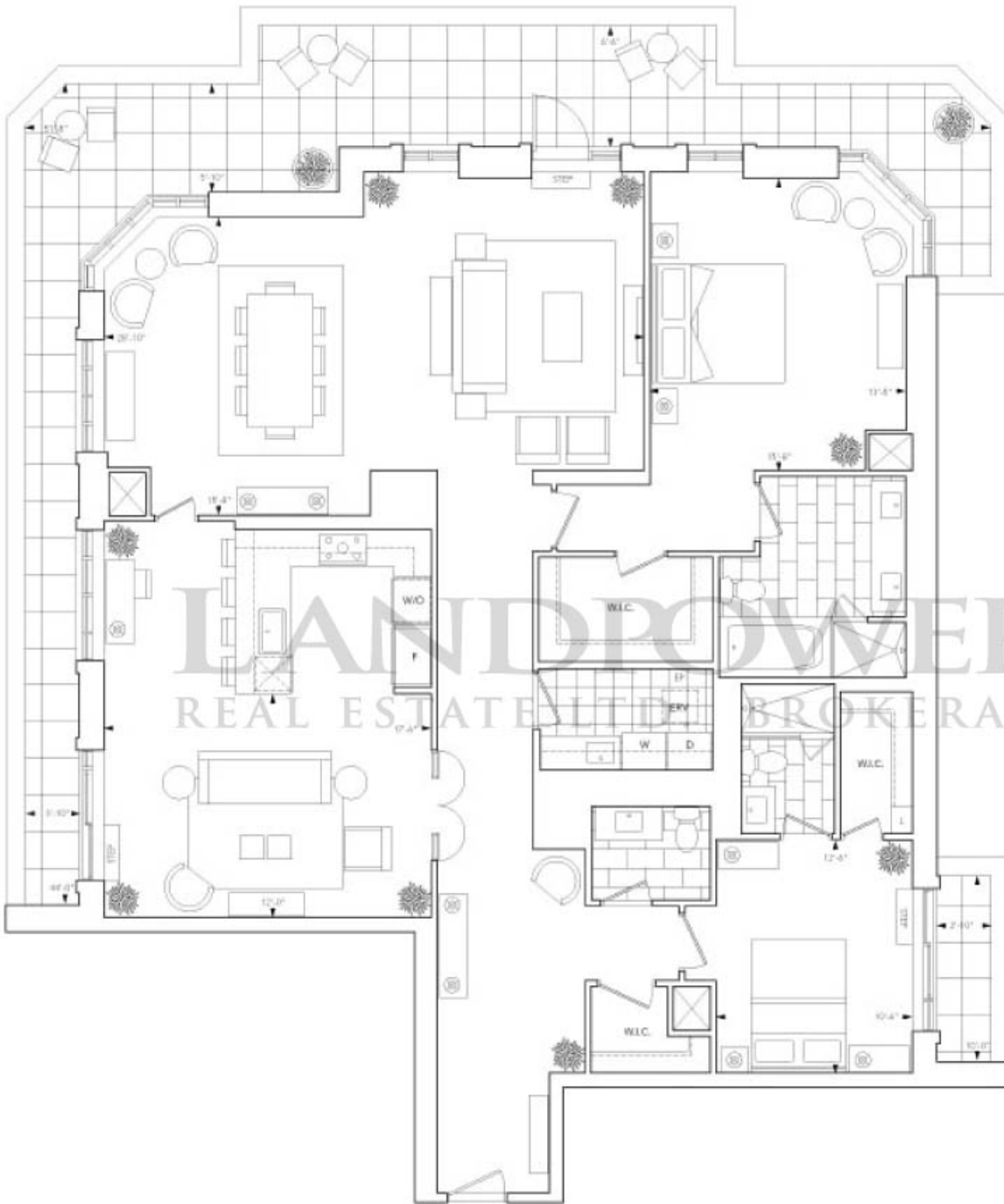


Suite 2S-T

2 Bedrooms

Starting from \$1,765,000* - 2,136 sq.ft.*

Tentative Occupancy Spring 2013



Tridel, for the fourth consecutive year, has been ranked number one in the 2009 J.D. Power and Associates New Condominium Builder Customer Satisfaction Study in the GTA.



2010 Ontario High-Rise Builder of the Year by Tarion.

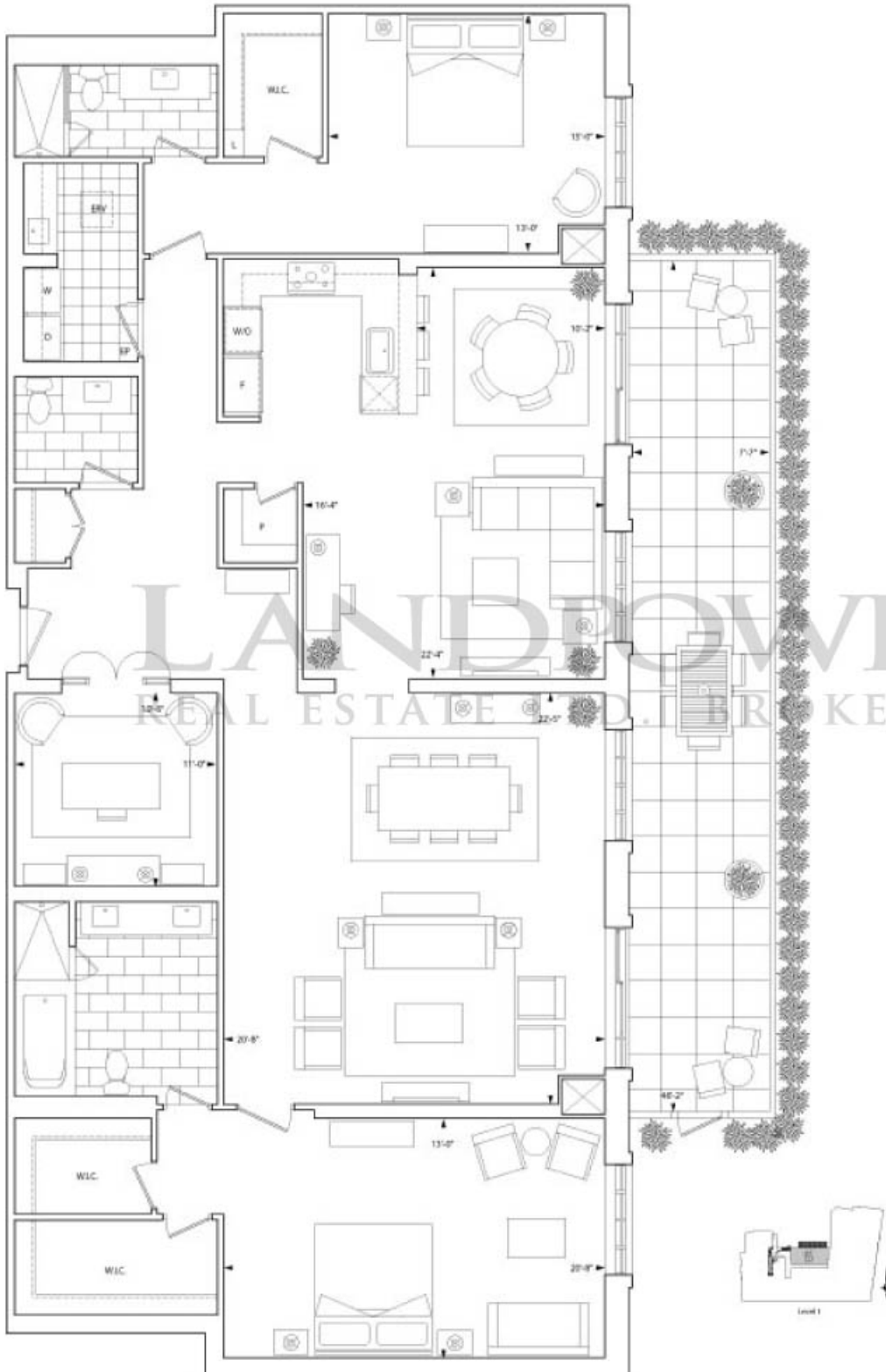


2010 High-Rise Green Builder of the Year by BILD.



2009 Home Builder of the Year by the Ontario Home Builders' Association.





Tridel, for the fourth consecutive year, has been ranked number one in the 2009 J.D. Power and Associates New Condominium Builder Customer Satisfaction Study in the GTA.



2010 Ontario High-Rise Builder of the Year by Tarion.

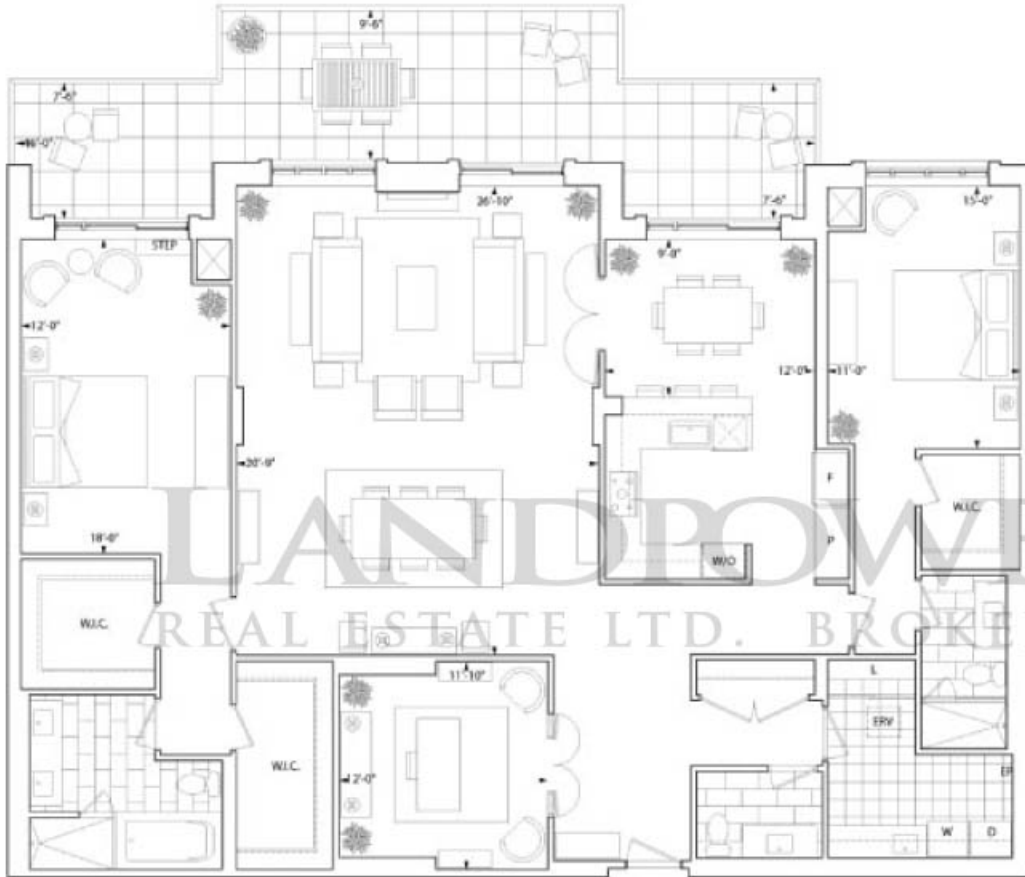


2010 High-Rise Green Builder of the Year by BILD.



2009 Home Builder of the Year by the Ontario Home Builders' Association.





Penthouse



Tridel, for the fourth consecutive year, has been ranked number one in the 2009 J.D. Power and Associates New Condominium Builder Customer Satisfaction Study in the GTA.



2010 Ontario High-Rise Builder of the Year by Tarion.



2010 High-Rise Green Builder of the Year by BILD.



2009 Home Builder of the Year by the Ontario Home Builders' Association.



All dimensions are approximate and subject to normal construction variances. Dimensions may exceed the useable floor area. Sizes and specifications subject to change without notice. Furniture is displayed for illustration purposes only and does not necessarily reflect the electrical plan for the suite. Suites are sold unfurnished. E. & O.E. September 29, 2010.



LANDPOWER
REAL ESTATE BROKERAGE



Level B



Tridel, for the fourth consecutive year, has been ranked number one in the 2009 J.D. Power and Associates New Condominium Builder Customer Satisfaction Study in the GTA.



2010 Ontario High-Rise Builder of the Year by Tarion.

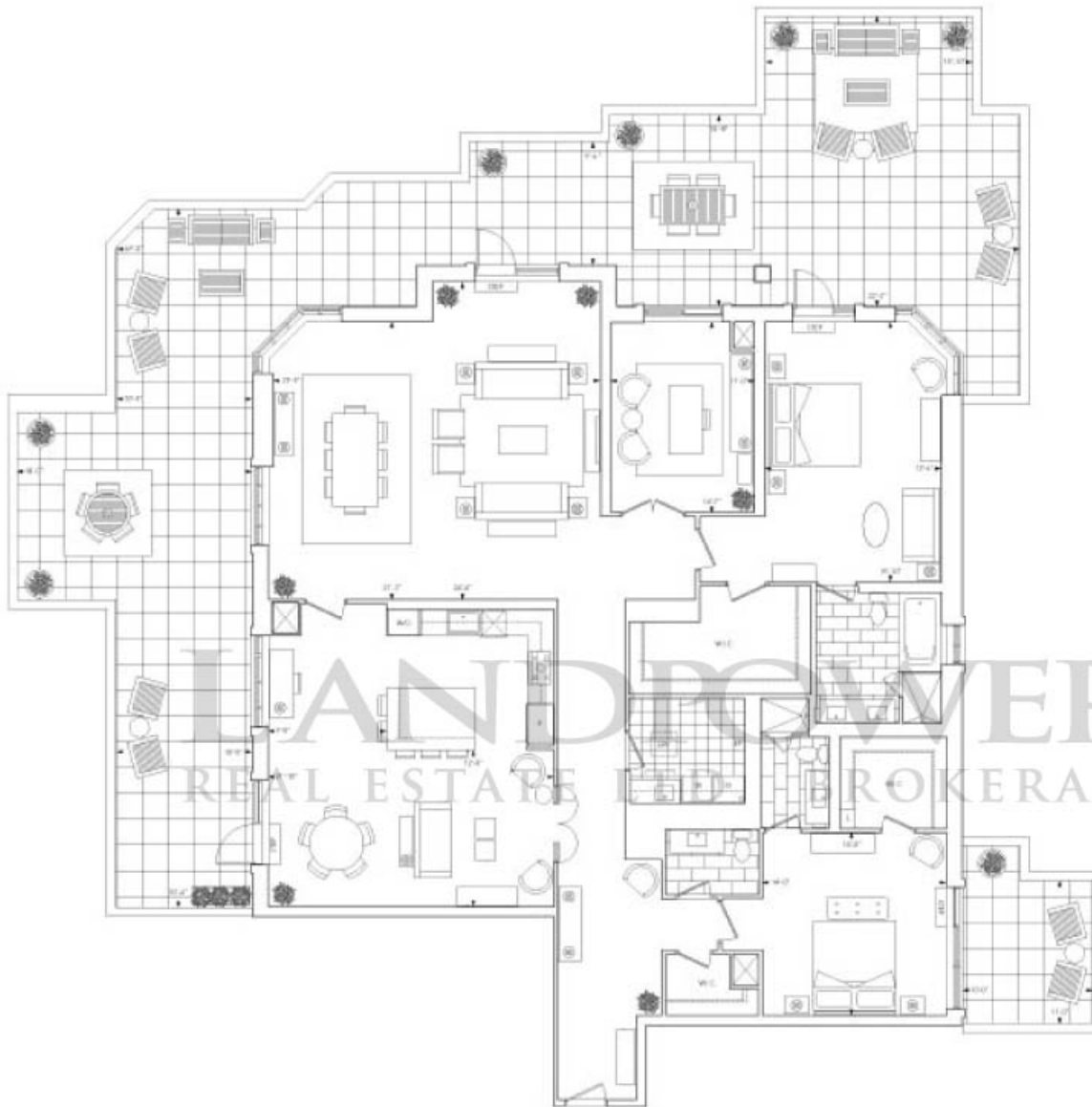


2010 High-Rise Green Builder of the Year by BILD.



2009 Home Builder of the Year by the Ontario Home Builders' Association.





Tridel, for the fourth consecutive year, has been ranked number one in the 2009 J.D. Power and Associates New Condominium Builder Customer Satisfaction Study in the GTA.



2010 Ontario High-Rise Builder of the Year by Tarion.

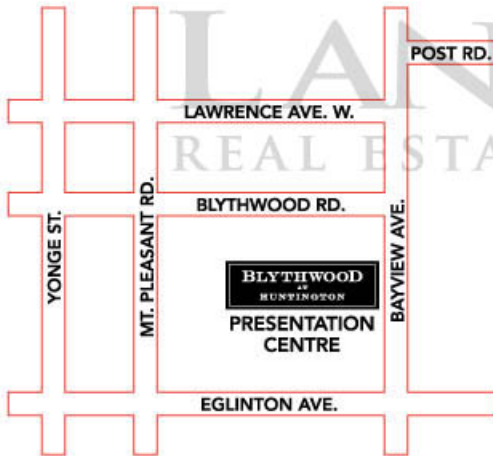


2010 High-Rise Green Builder of the Year by BILD.



2009 Home Builder of the Year by the Ontario Home Builders' Association.





Telephone:
416-485-1900

Address:
1900 Bayview Ave. North York

Hours:
Monday to Thursday, 11am - 7pm
Friday, Closed
Weekends & Holidays, 12pm - 6pm



Tridel, for the fourth consecutive year, has been ranked number one in the 2009 J.D. Power and Associates New Condominium Builder Customer Satisfaction Study in the GTA.



2010 Ontario High-Rise Builder of the Year by Tarion.



2010 High-Rise Green Builder of the Year by BILD.



2009 Home Builder of the Year by the Ontario Home Builders' Association.

