

CASA III

lobby to be furnished with HERMÈS

LANDPOWER
REAL ESTATE LTD. BROKERAGE



LAND EVER
REAL ESTATE BROKERAGE



LAND
REAL ESTATE

VER
KERAGE











HAYDEN STREET



56
STOREY
TOWER

CHARLES STREET

- ① Outdoor Amenity Roof / Pool
- ② Dining Pavilions
- ③ Entry
- ④ Courtyard & Tranquil Water Feature
- ⑤ Revitalized Sidewalks

ma belle maison

(MY BEAUTIFUL HOME)

FEATURES & FINISHES

AN ARCHITECTURAL LANDMARK

- Sculptural 56-storey glass tower designed by Peter Clewes of architectsAlliance
- Soaring 20' lobby and two levels of inspired amenity spaces
- Lobby overlooking a tranquil water feature
- 24/7 resident dedicated concierge services
- Two levels of recreational and entertainment amenities offering residents the ultimate lifestyle, including:
 - Outdoor pool
 - Four luxuriously appointed guest suites
 - Fully equipped fitness facility with dedicated yoga studio and his/hers change rooms
 - Large outdoor terrace with BBQ
 - Resident lounge
 - Multi-purpose area with catering kitchen for stylish entertaining
 - Billiards and games room
 - Hotel-inspired personal services including blow-dry bar, nail salon and massage studio**
 - Media room

INSPIRED SUITE INTERIORS

- 9' smooth ceilings in all suites*
- Floor-to-ceiling windows with insulated double-glazed windows
- Spacious wraparound balconies*
- Choice of designer selected laminate flooring in all living areas*
- Contemporary glass sliding doors*
- Solid-core paint-finish entry doors with security view-hole

- Modern profile painted base boards, door frames and casings
- Designer-selected door handles and hardware
- Built-in closet cabinetry*

CONTEMPORARY GOURMET KITCHENS

- Open concept kitchen (island optional)*
- Choice of contemporary cabinetry in a variety of styles and colours
- Choice of natural stone or quartz countertops
- Choice of ceramic tile backsplash
- State-of-the-art stainless steel appliances including: fridge, dishwasher, microwave oven with integrated exhaust fan and stove
- Under mount stainless steel sink with integrated pull-out faucet head
- Designer-selected ceiling mounted light fixture

LUXURIOUS ENSUITE BATHROOMS

- Choice of contemporary cabinetry in a variety of styles and colours
- Marble countertops in master bathroom*
- Cultured marble countertop with integrated basin in second bathroom*
- Full height ceramic tile bathtub surround with tiled skirt and shower surround*

- Choice of porcelain tile flooring
- Designer-selected chrome finish bathroom hardware
- Decorative wall lighting fixture
- Wall-mounted frameless mirror

CONVENIENT LAUNDRY

- In-suite laundry closet with stacked washer and dryer
- Ceramic tile flooring

PEACE OF MIND SECURITY

- Electronic communication system in lobby vestibule permits visitors to communicate with suite from entrances
- Closed circuit cameras, panic buttons and high intensity lighting in parking garage
- All main entrances and exits monitored with closed circuit television system
- Remote control/access card for private garage access
- Smoke and carbon monoxide detectors

ENVIRONMENTALLY RESPONSIBLE FEATURES

- Garbage chutes to facilitate recycling
- Visitor bicycle parking
- Individual hydro metering
- In suite thermostat controlled heating and air conditioning

STATE OF THE ART ELECTRICAL FEATURES

- Pre-wired for cable TV , high-speed internet access and telephones*
- Card and key access throughout all common areas

*As per plan

**Subject to change without notice

Colours and/or materials to be selected from Vendor's standard sample packages

Cresford Developments warranty backed by Tarion Warranty program for new construction

The Vendor has the right to substitute other products and materials from those listed in this schedule, provided substituted products are of equal or better value.

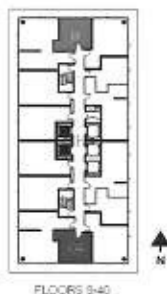
ATLAS *studio*

Suite: 312 sq.ft. Balcony: 78 sq.ft. Total: 390 sq.ft.



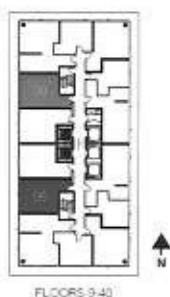
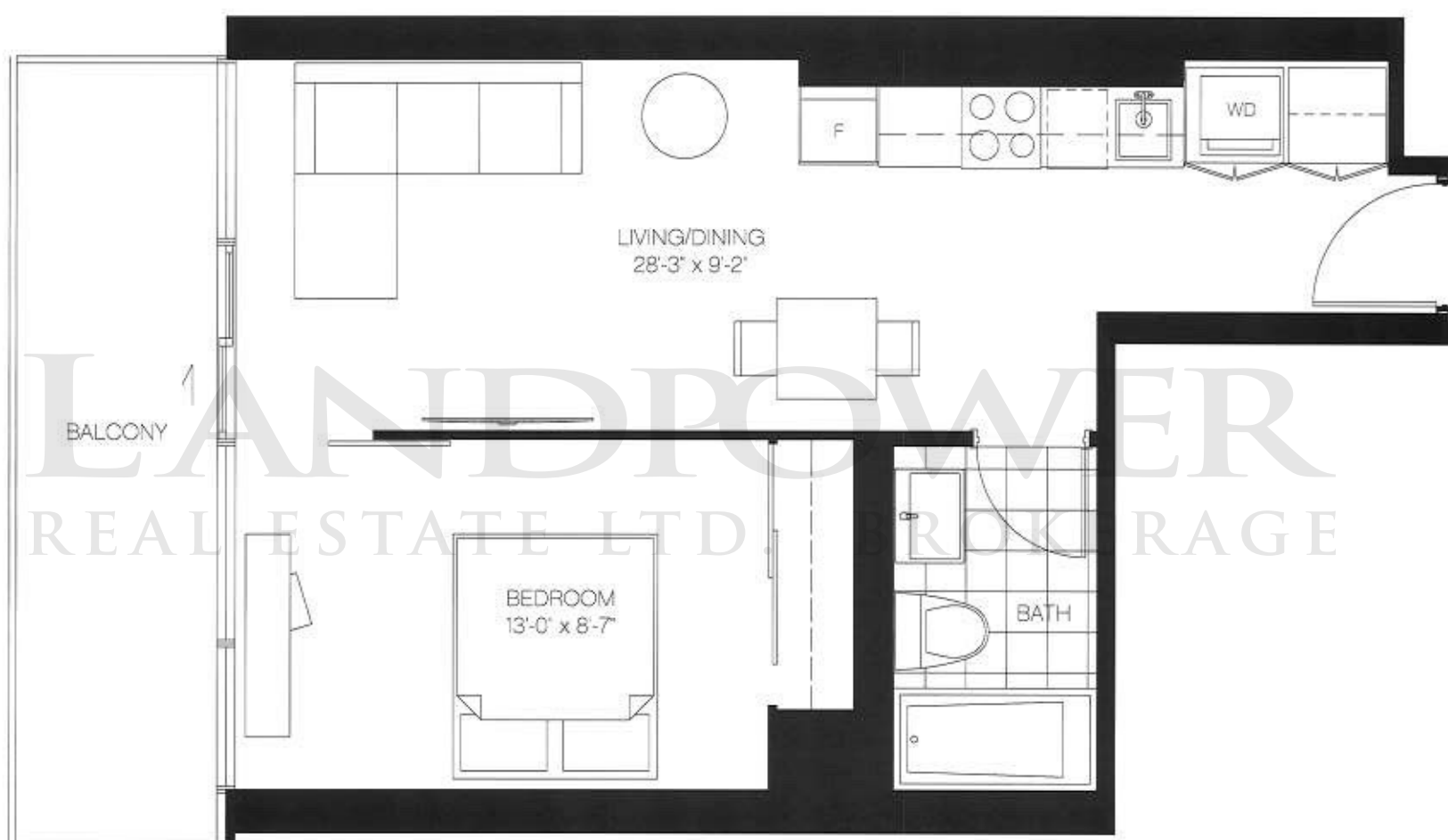
CONSTANCE *jr. one bedroom*

Suite: 346 sq.ft. Balcony: 83 sq.ft. Total: 429 sq.ft.



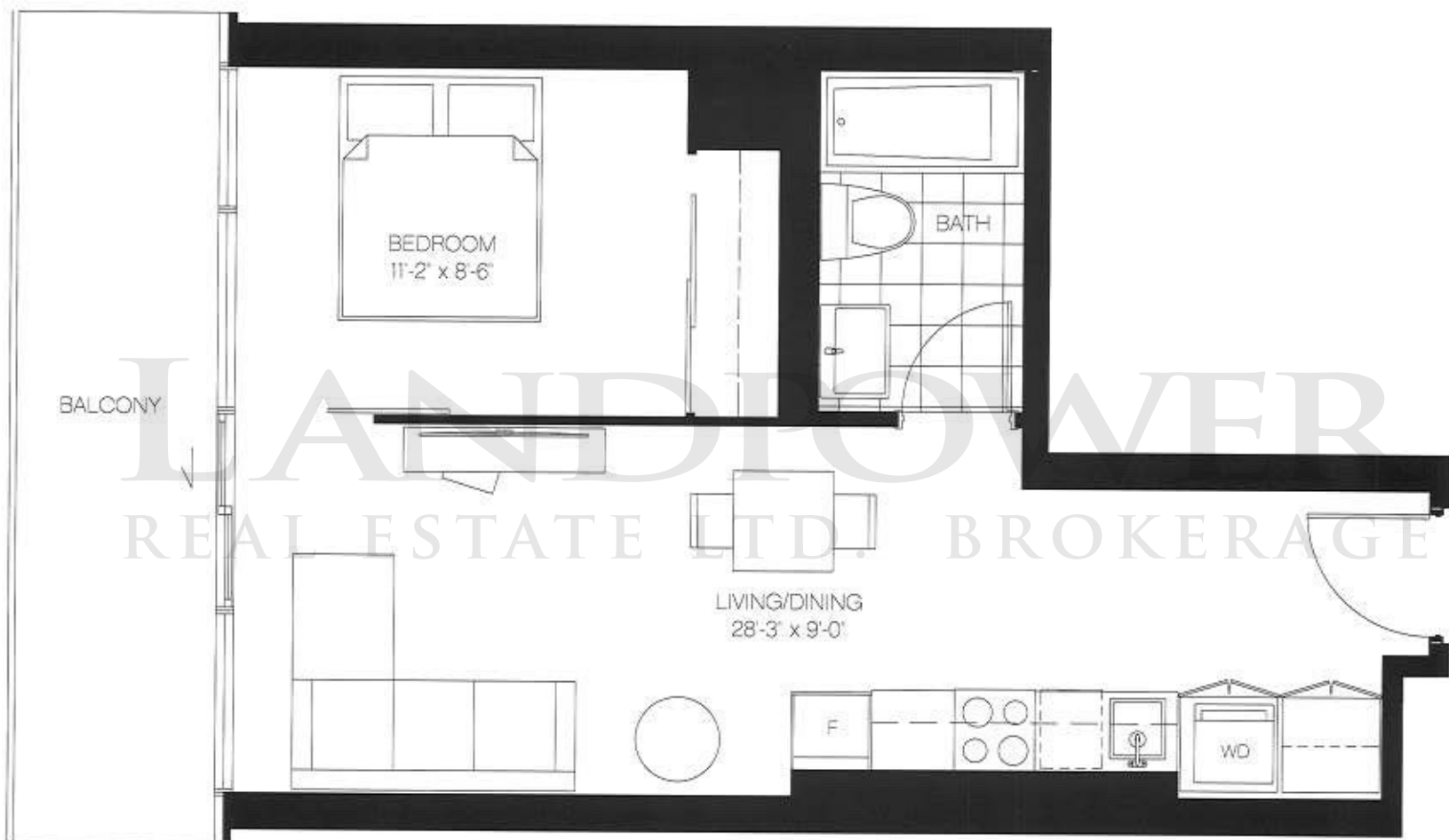
EVELYNE *one bedroom*

Suite: 493 sq.ft. Balcony: 94 sq.ft. Total: 587 sq.ft.



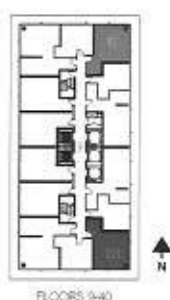
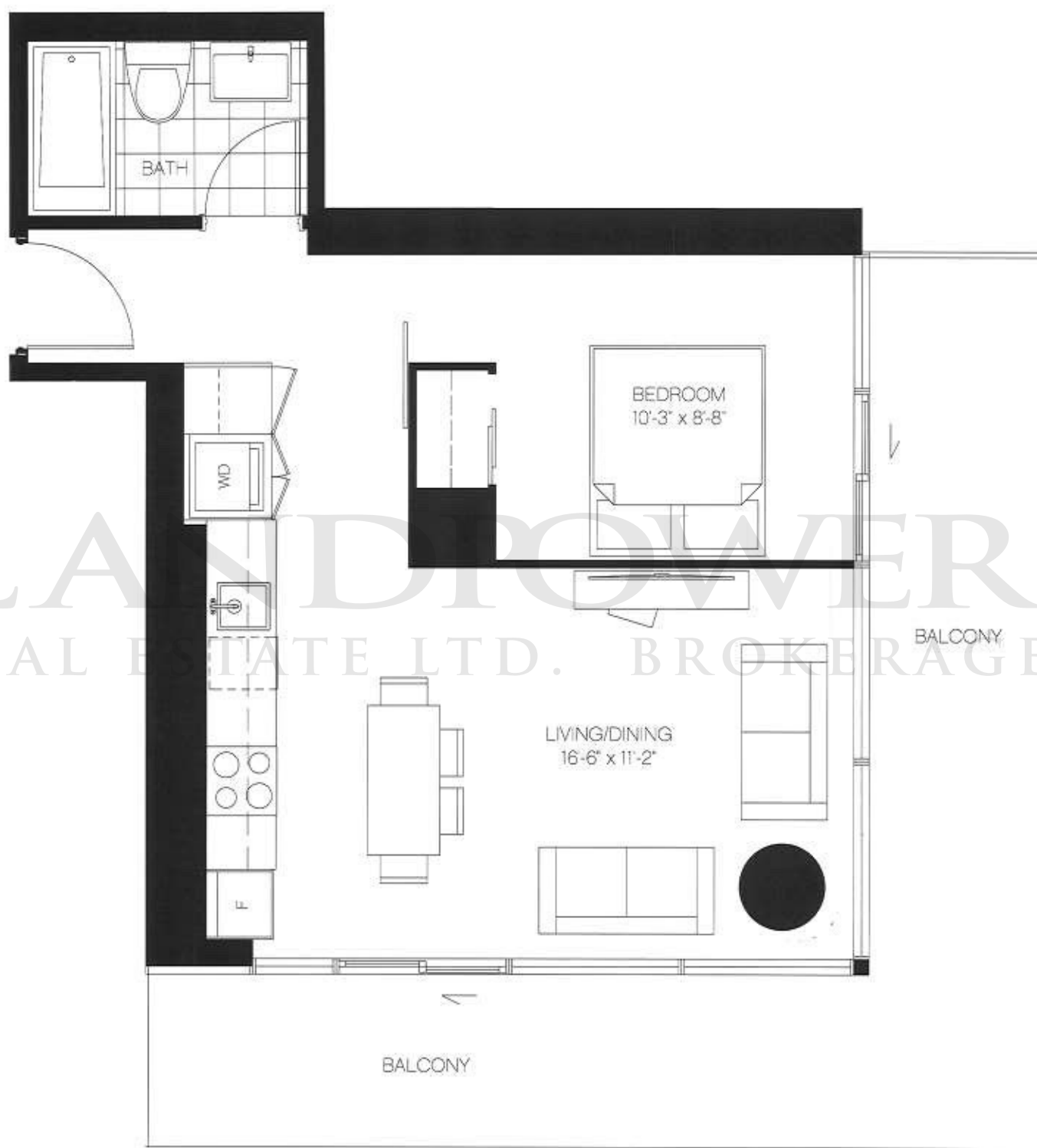
VICTORIA *one bedroom*

Suite: 496 sq.ft. Balcony: 101 sq.ft. Total: 597 sq.ft.



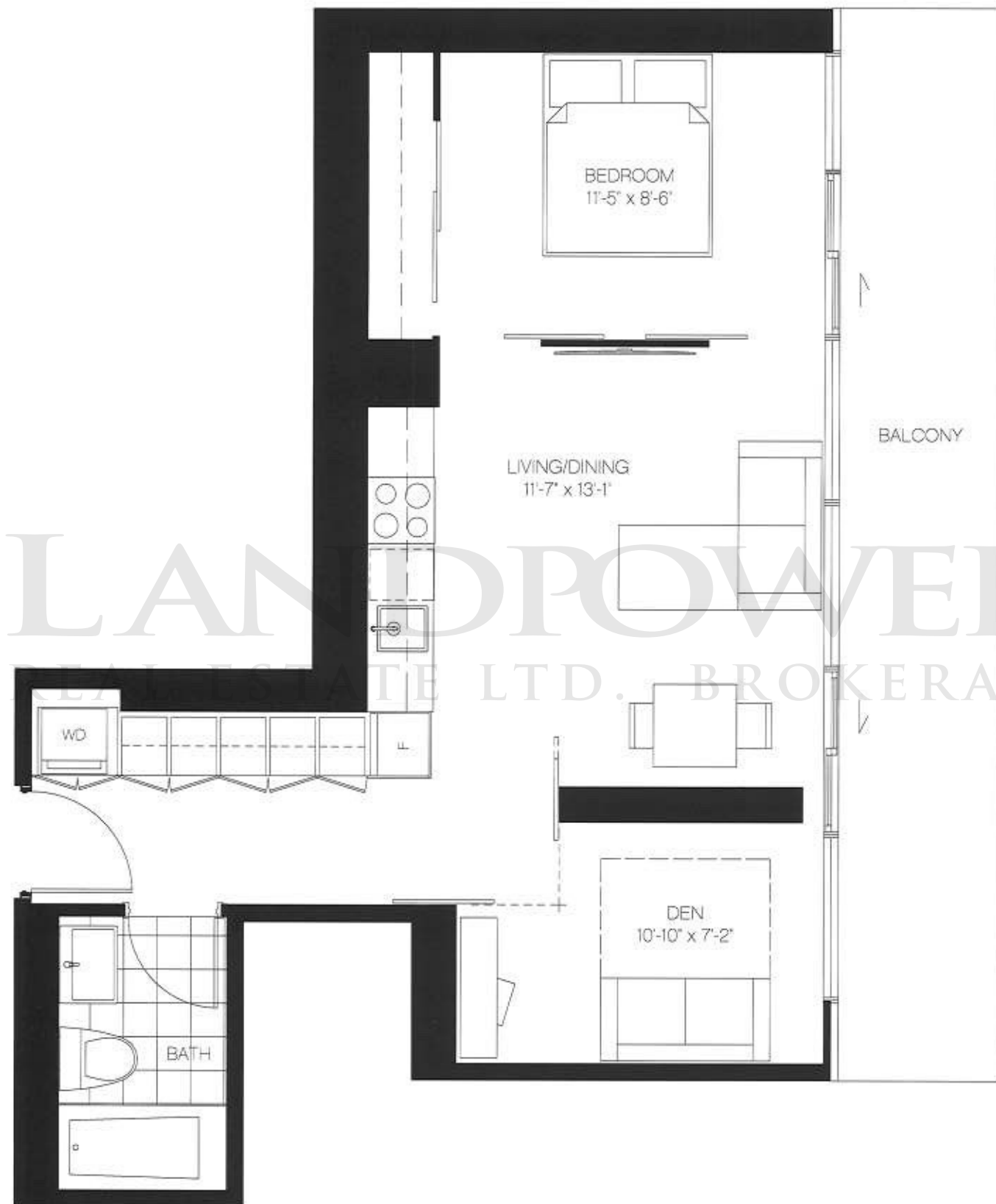
MASSAI *one bedroom*

Suite: 507 sq.ft. Balcony: 226 sq.ft. Total: 733 sq.ft.



KELLY *one bedroom + den*

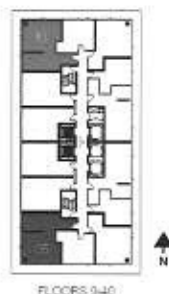
Suite: 588 sq.ft. Balcony: 155 sq.ft. Total: 743 sq.ft.



FLOORS 9-40

BIRKIN *two bedroom*

Suite: 690 sq.ft. Balcony: 274 sq.ft. Total: 964 sq.ft.



FLOORS 9-40

CASA III

CASA III

III

CASA III

CASA III

CASA III

CASA III

CASA III

CASA III

CASA III

CASA III

CASA III

CASA III

CASA III

CASA III

CASA III

CASA III

LANDPOWER
REAL ESTATE LTD., BROKERAGE

Cresford
YOUR LIFE. YOUR STYLE.

casacondominium.com or 416-486-CASA (2272)

This product is not endorsed by Hermès. Developer reserves the right to substitute furniture with equal or better value, depending on availability at time of purchase. Illustrations are artist's concept. E. & O.E.