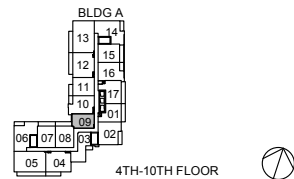
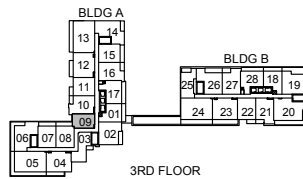
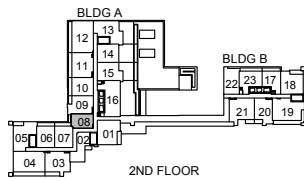
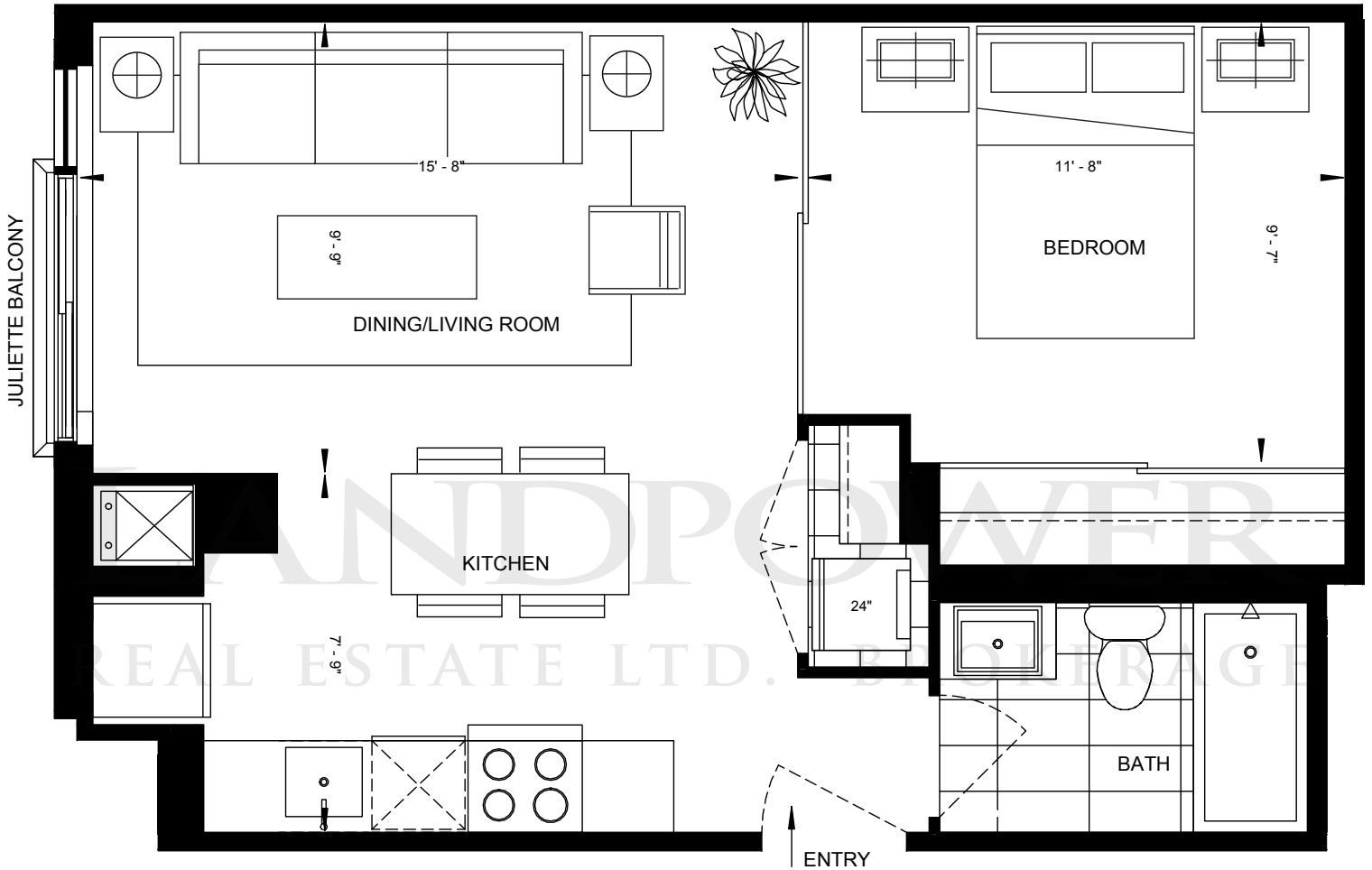


D'or

LANDPOWER
CONDOMINIUMS
AT THORNHILL CITY CENTRE
REAL ESTATE LTD. BROKERAGE

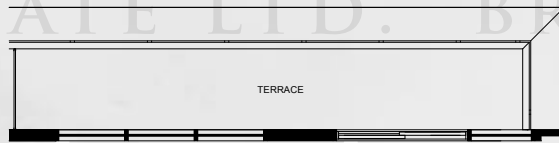
ONE BEDROOM | 1B-A | 529 SQ. FT.



D'or

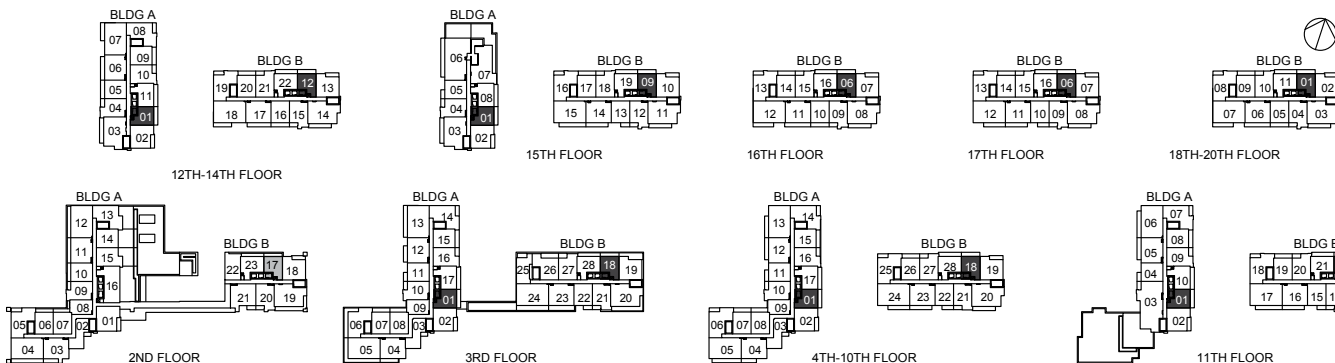
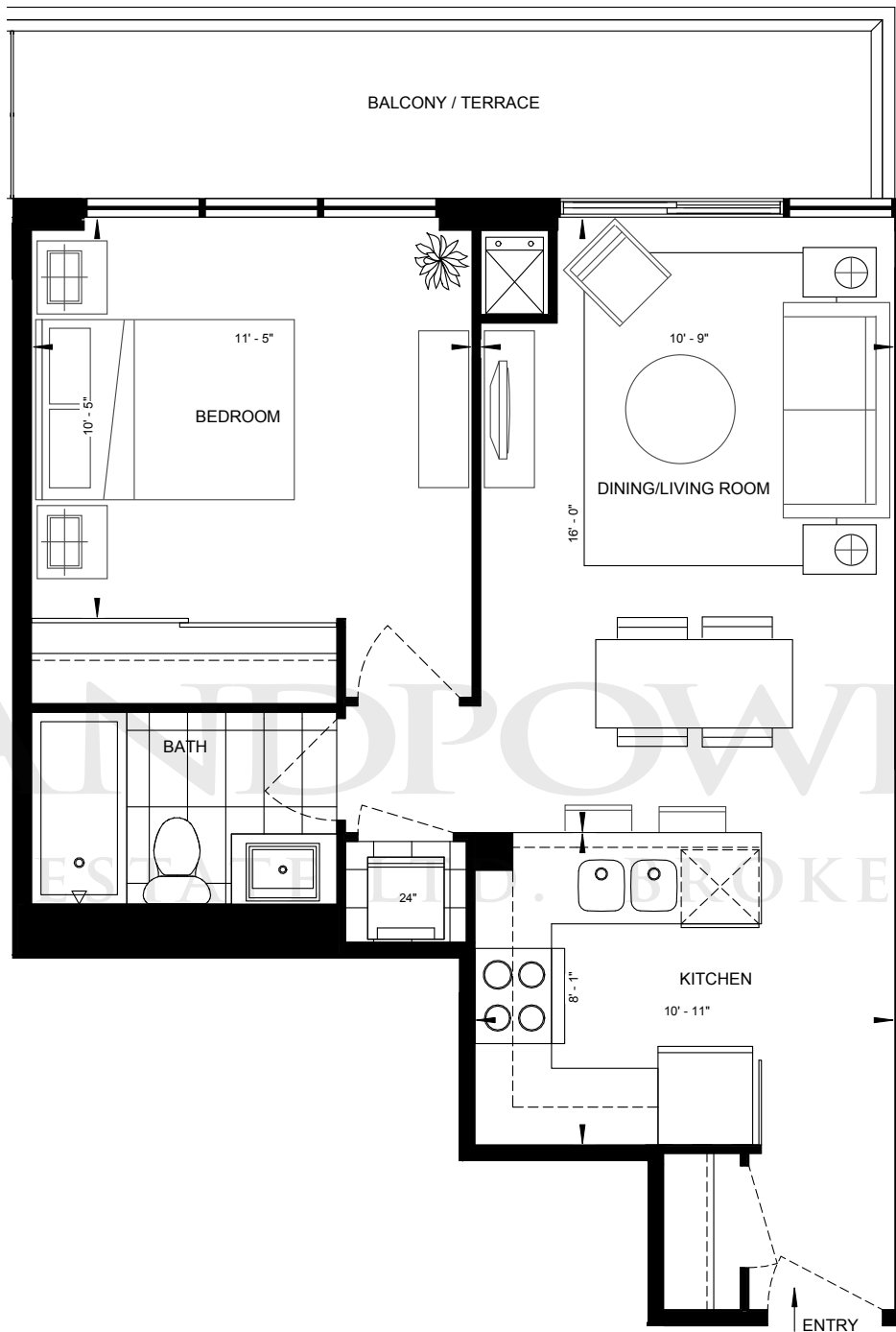
CONDOMINIUMS
AT THORNHILL CITY CENTRE

LANDPOWER
REAL ESTATE LTD. BROKERAGE



1B-B(2)
BUILDING B - FLOOR 2 UNIT 17

ONE BEDROOM | 1B-B(1) | 584 SQ. FT.
ALTERNATIVE TERRACE

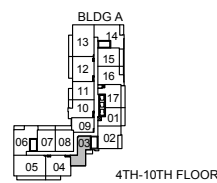
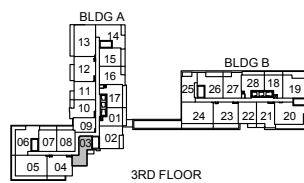
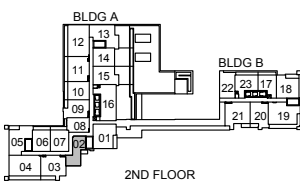
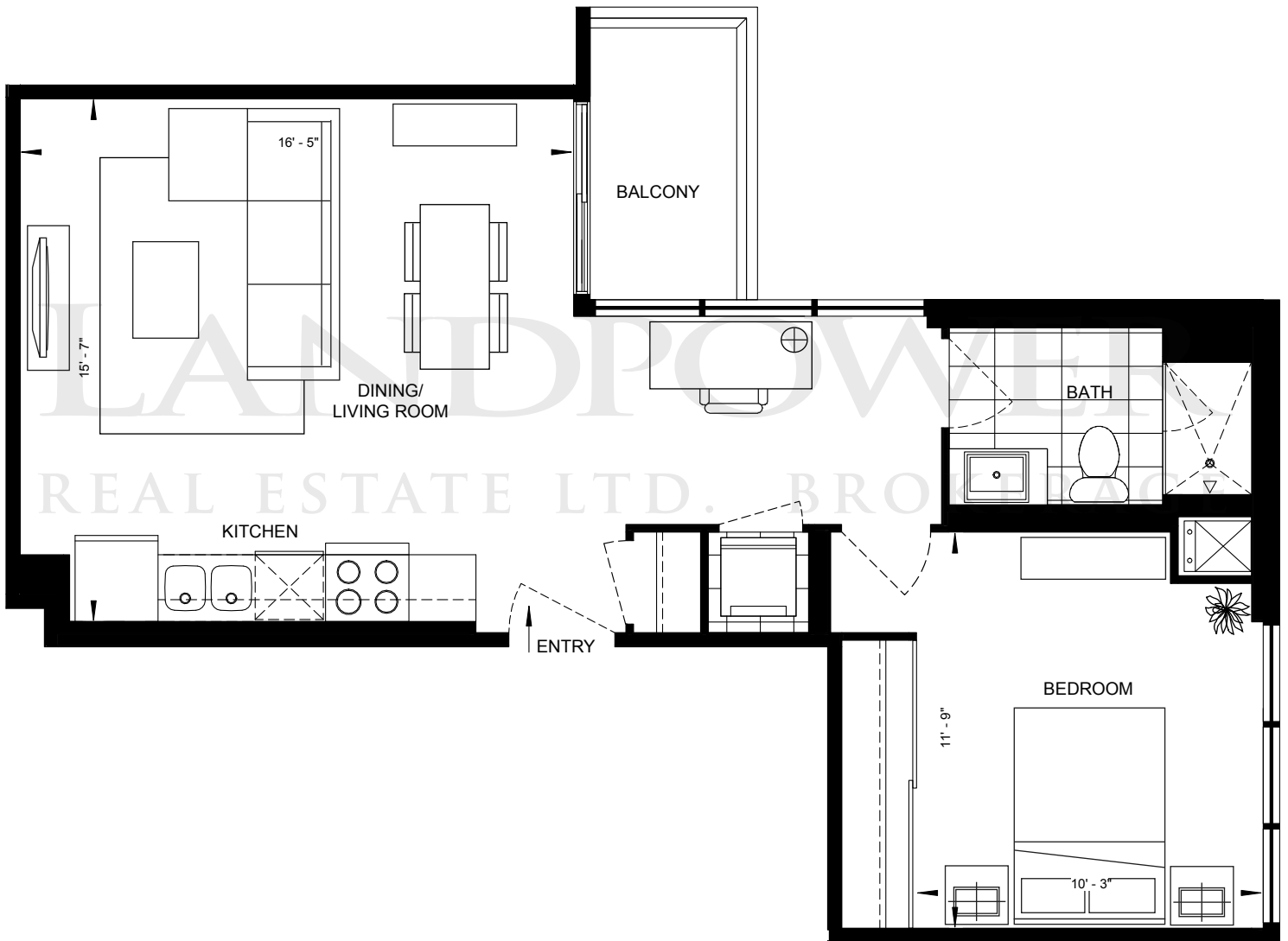


Whenever there are any discrepancies between the dimensions, areas and layout as set out in this Schedule D, and any marketing materials or brochures, the dimensions, areas and layout in the Schedule D shall govern. Dimensions, specifications, layouts, location of materials and fixtures, tile floor patterns and architectural detailing (including window size and location and door size, location and swing) are approximate only and are subject to change or modifications, without notice. Where there is a metal element indicated, metal element's dimension, size and location are approximate only and subject to change without notice. Actual usable floor space varies from stated floor area. Orientation of suite may be reversed and Purchaser agrees to accept same. Balconies, decks and terraces are exclusive use common elements shown for display purposes only and location and size are subject to change without notice. All illustrations are artist concepts only. The provisions of Schedule "X" of the Agreement, including Section 6 and 38, apply to the Schedule. E. & O.E.

D'or

LANDPOWER
CONDOMINIUMS
AT THORNHILL CITY CENTRE
REAL ESTATE LTD. BROKERAGE

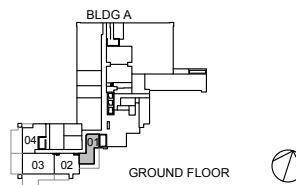
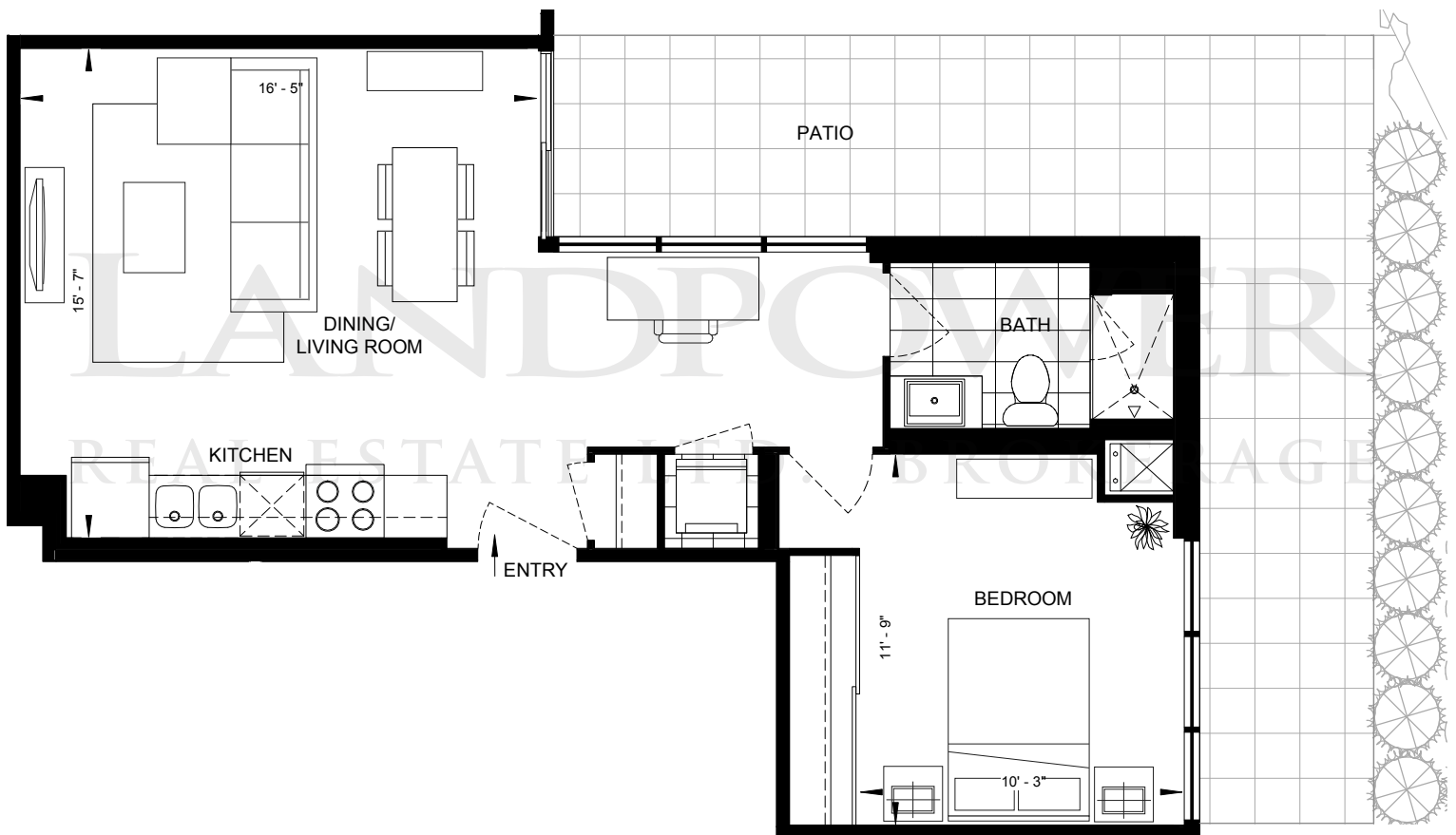
ONE BEDROOM | 1B-D | 646 SQ. FT.



D'or

LANDPOWER
CONDOMINIUMS
AT THORNHILL CITY CENTRE
REAL ESTATE LTD. BROKERAGE

ONE BEDROOM | 1B-D-P | 646 SQ. FT.



Whenever there are any discrepancies between the dimensions, areas and layout as set out in this Schedule D, and any marketing materials or brochures, the dimensions, areas and layout in the Schedule D shall govern. Dimensions, specifications, layouts, location of materials and fixtures, tile floor patterns and architectural detailing (including window size and location and door size, location and swing) are approximate only and are subject to change or modifications, without notice. Where there is a metal element indicated, metal element's dimension, size and location are approximate only and subject to change without notice. Actual usable floor space varies from stated floor area. Orientation of suite may be reversed and Purchaser agrees to accept same. Balconies, decks and terraces are exclusive use common elements shown for display purposes only and location and size are subject to change without notice. All illustrations are artist concepts only. The provisions of Schedule "X" of the Agreement, including Section 6 and 38, apply to the Schedule. E. & O.E.

D'or

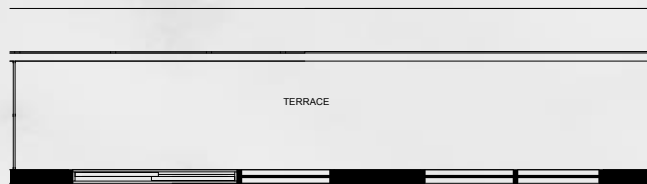
CONDOMINIUMS AT THORNHILL CITY CENTRE



1BD-A(1)
BUILDING A - FLOOR 3, 5, 8 & 10 UNIT 11, FLOOR 11 UNIT 4, FLOOR 15 UNIT 5
BUILDING B - FLOOR 3, 5, 8 & 9 UNIT 22, FLOOR 11 UNIT 15, FLOOR 13 UNIT 16, FLOOR 15 UNIT 13, FLOOR 19 & 20 UNIT 5

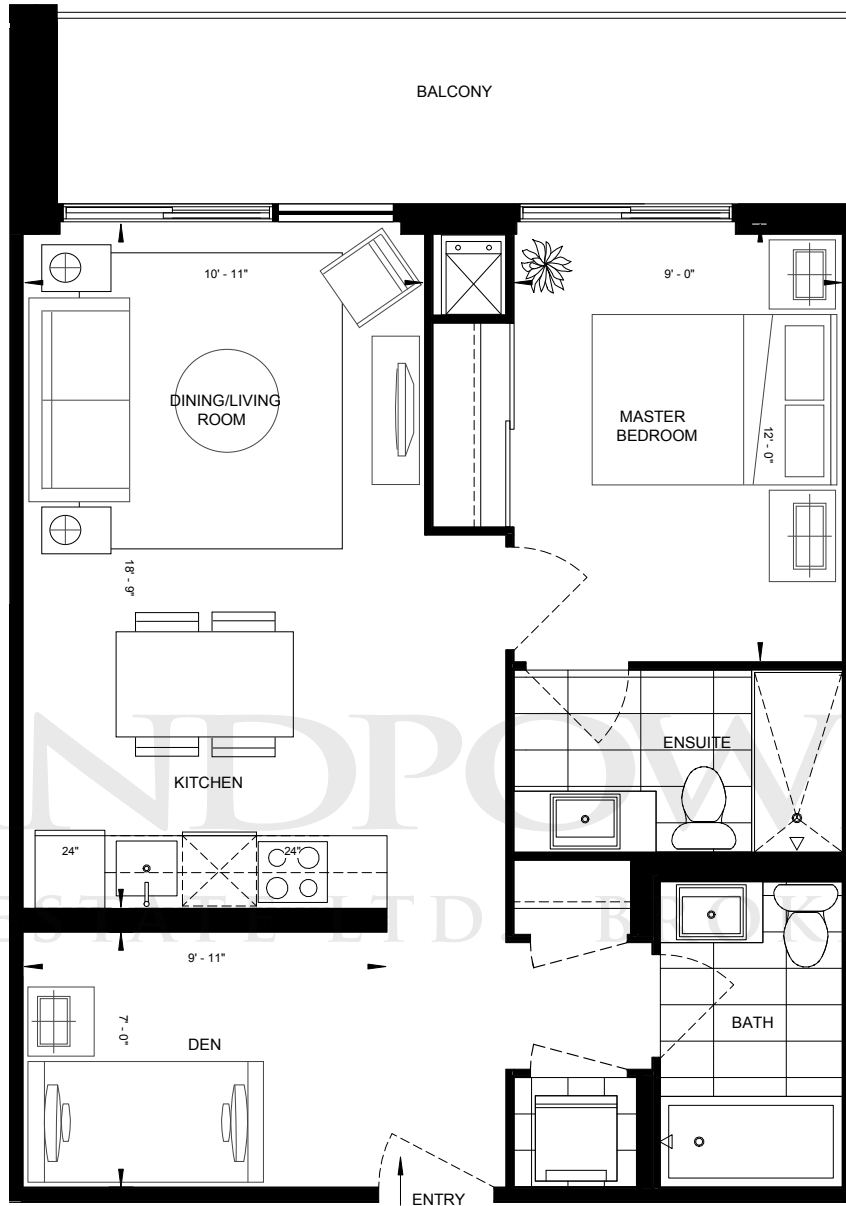


1BD-A(2)
BUILDING A - FLOOR 4, 6 & 9 UNIT 11, FLOOR 13 UNIT 5



1BD-A(3)
BUILDING A - FLOOR 2 UNITS 6, 7 & 10

**ONE BEDROOM + DEN | 1BD-A(4) | 652 SQ. FT.
ALTERNATIVE BALCONIES / TERRACE**



LANDPOWER
REAL ESTATE LTD. BROKERAGE

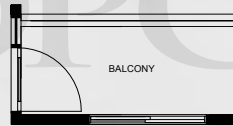


Whenever there are any discrepancies between the dimensions, areas and layout as set out in this Schedule D, and any marketing materials or brochures, the dimensions, areas and layout in the Schedule D shall govern. Dimensions, specifications, layouts, location of materials and fixtures, tile floor patterns and architectural detailing (including window size and location and door size, location and swing) are approximate only and are subject to change or modifications, without notice. Where there is a metal element indicated, metal element's dimension, size and location are approximate only and subject to change without notice. Actual usable floor space varies from stated floor area. Orientation of suite may be reversed and Purchaser agrees to accept same. Balconies, decks and terraces are exclusive use common elements shown for display purposes only and location and size are subject to change without notice. All illustrations are artist concepts only. The provisions of Schedule "X" of the Agreement, including Section 6 and 38, apply to the Schedule. E. & O.E.

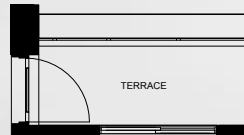
D'or

CONDOMINIUMS
AT THORNHILL CITY CENTRE

LANDPOWER
REAL ESTATE LTD. BROKERAGE

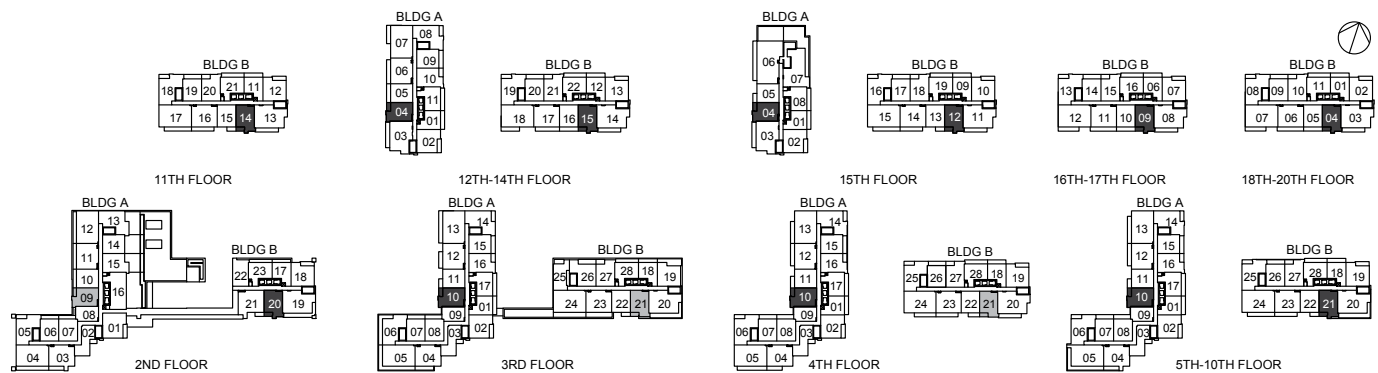
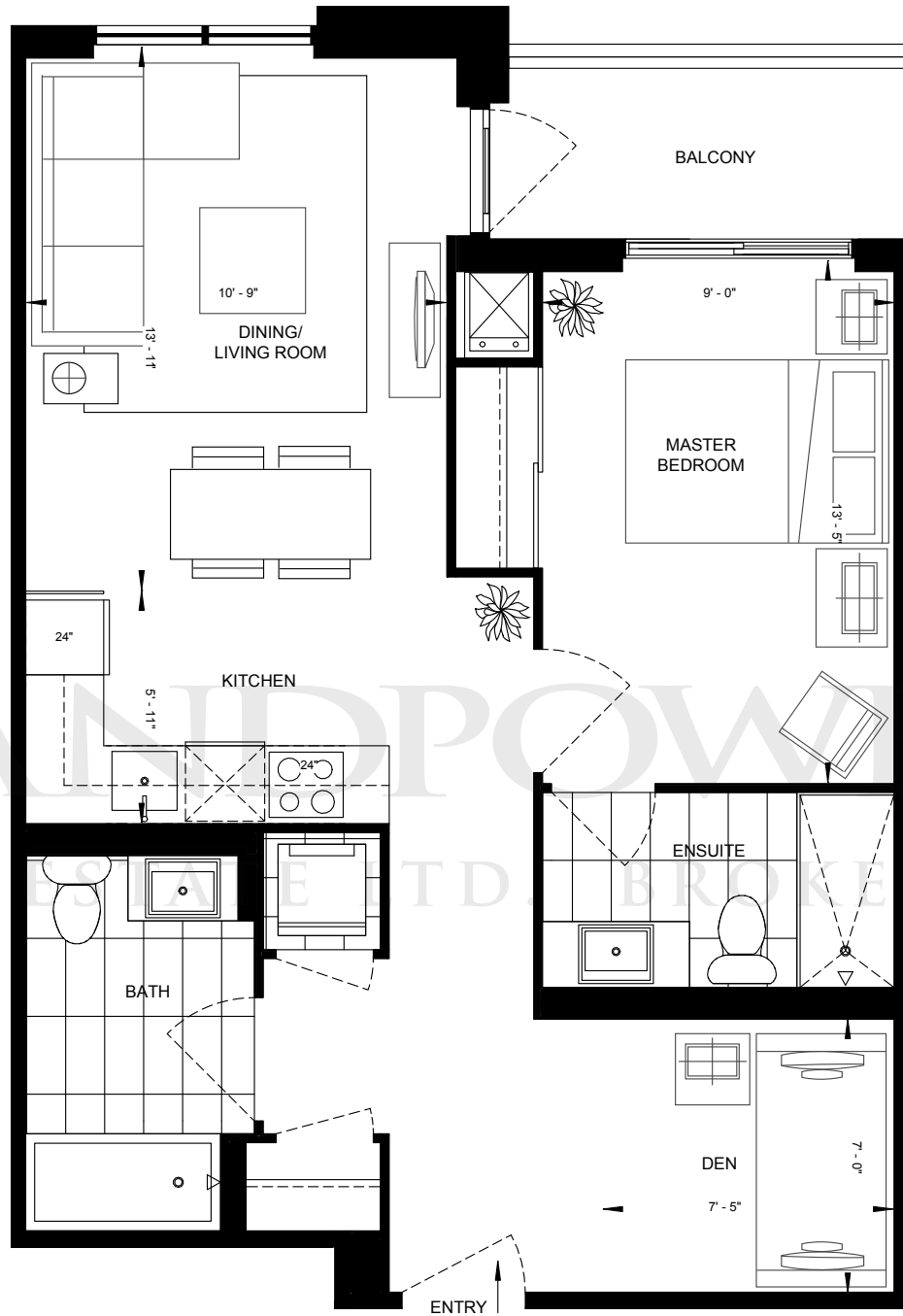


1BD-C(2)
BUILDING B - FLOOR 3 & 4 UNIT 21



1BD-C(3)
BUILDING A - FLOOR 2 UNIT 9

ONE BEDROOM + DEN | 1BD-C(1) | 709 SQ. FT.
ALTERNATIVE BALCONY / TERRACE

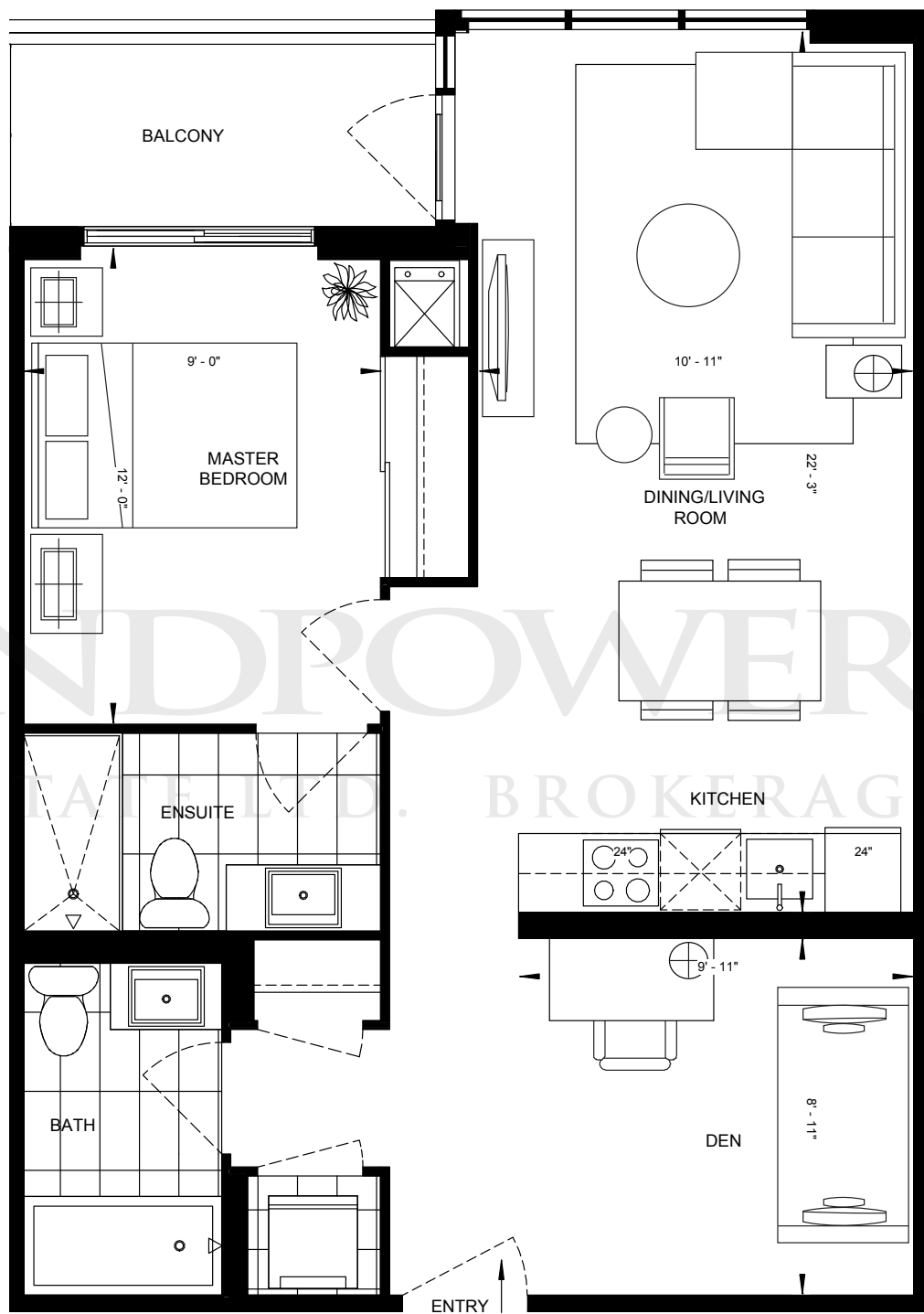


Whenever there are any discrepancies between the dimensions, areas and layout as set out in this Schedule D, and any marketing materials or brochures, the dimensions, areas and layout in the Schedule D shall govern. Dimensions, specifications, layouts, location of materials and fixtures, tile floor patterns and architectural detailing (including window size and location and door size, location and swing) are approximate only and are subject to change or modifications, without notice. Where there is a metal element indicated, metal element's dimension, size and location are approximate only and subject to change without notice. Actual usable floor space varies from stated floor area. Orientation of suite may be reversed and Purchaser agrees to accept same. Balconies, decks and terraces are exclusive use common elements shown for display purposes only and location and size are subject to change without notice. All illustrations are artist concepts only. The provisions of Schedule "X" of the Agreement, including Section 6 and 38, apply to the Schedule. E. & O.E.

D'or

LANDPOWER
CONDOMINIUMS
AT THORNHILL CITY CENTRE
REAL ESTATE LTD. BROKERAGE

ONE BEDROOM + DEN | 1BD-D | 728 SQ. FT.



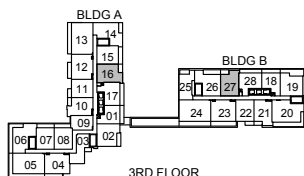
18TH-20TH FLOOR



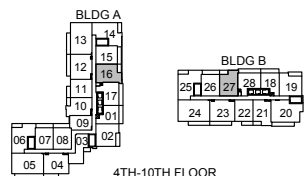
16TH-17TH FLOOR



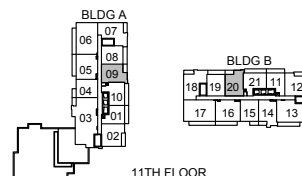
15TH FLOOR



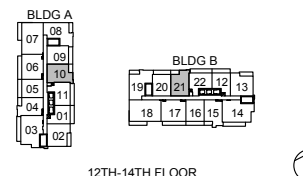
3RD FLOOR



4TH-10TH FLOOR



11TH FLOOR

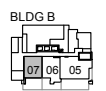
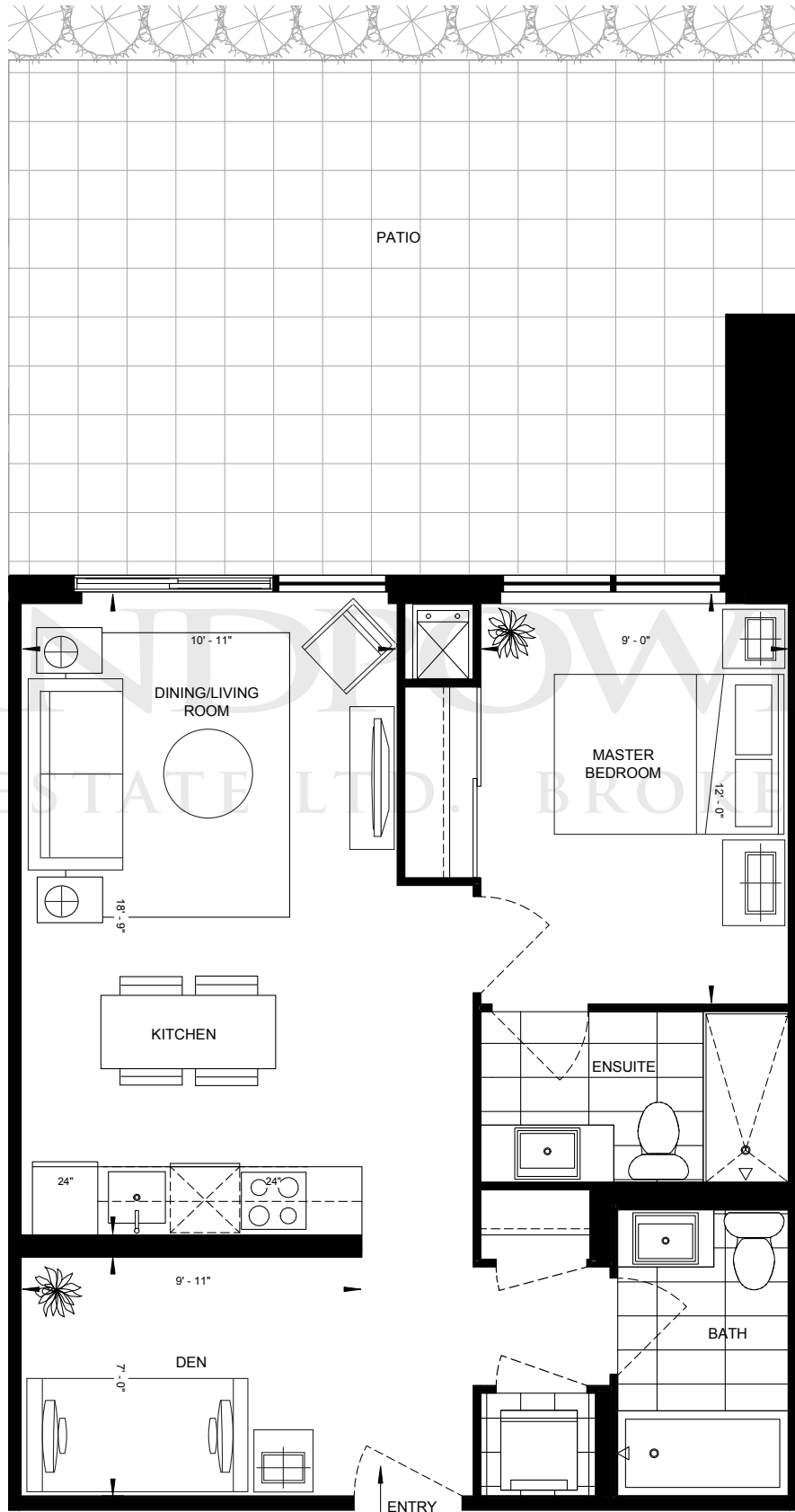


12TH-14TH FLOOR

D'or

LANDPOWER
CONDOMINIUMS
AT THORNHILL CITY CENTRE
REAL ESTATE LTD. BROKERAGE

ONE BEDROOM + DEN | 1BD-A-P | 652 SQ. FT.



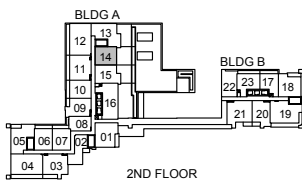
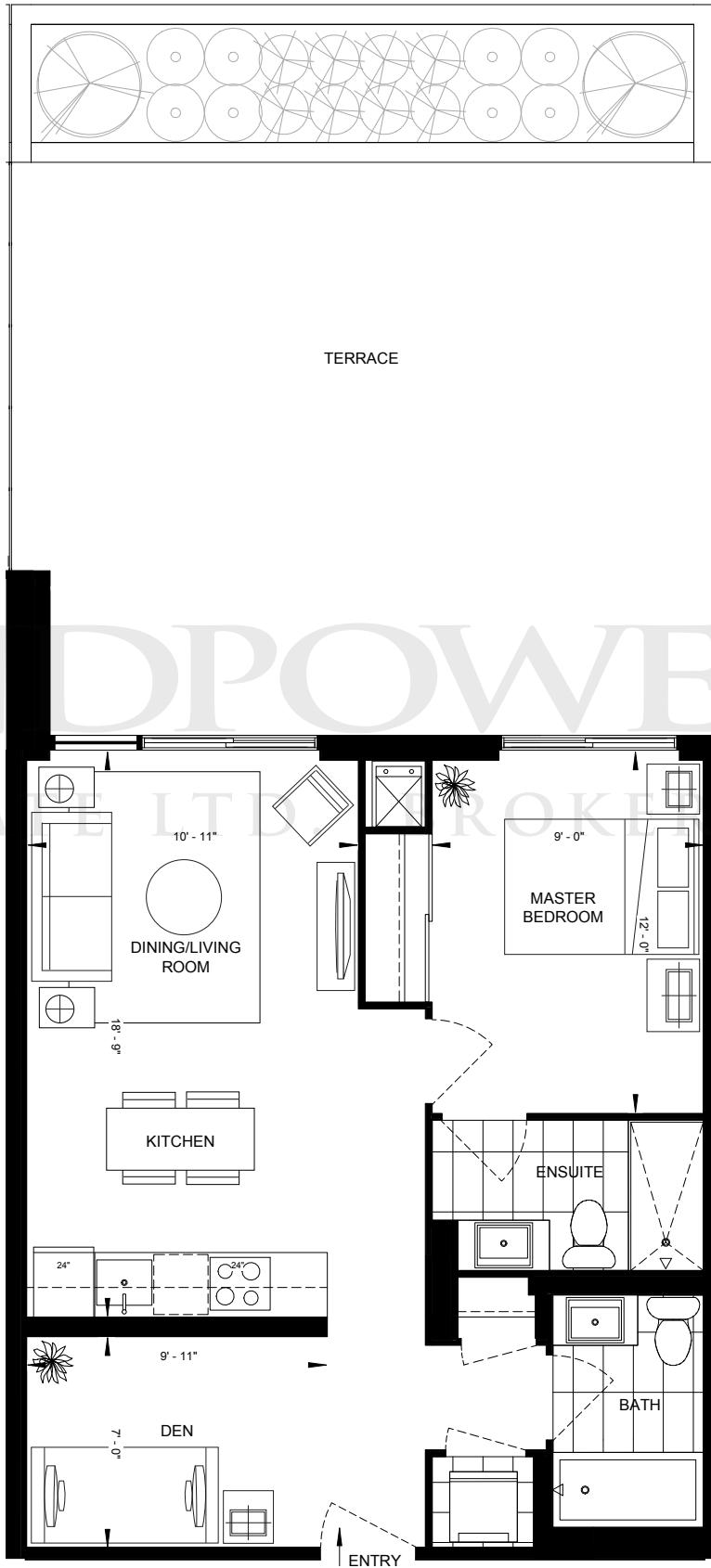
GROUND FLOOR



D'or

LANDPOWER
CONDOMINIUMS
REAL ESTATE LTD. BROKERAGE
AT THORNHILL CITY CENTRE

ONE BEDROOM + DEN | 1BD-A-T | 652 SQ. FT.

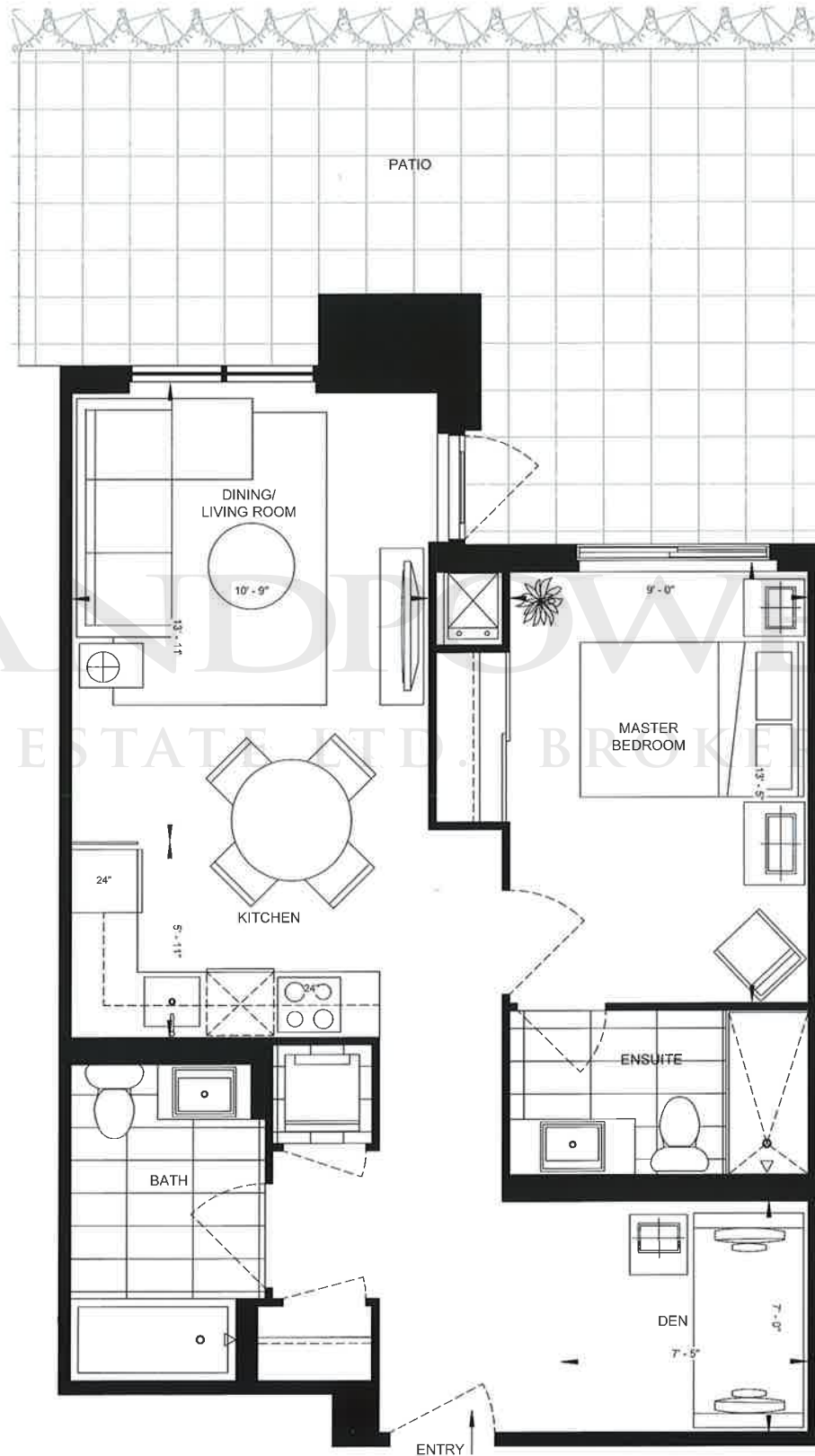


D'or

LANEPOWER
REAL ESTATE LTD. BROKERAGE

CONDOMINIUMS
AT THORNHILL CITY CENTRE

ONE BEDROOM + DEN | 1BD-C-P | 709 SQ. FT.



LANDPOWER
REAL ESTATE LTD. BROKERAGE



GROUND FLOOR

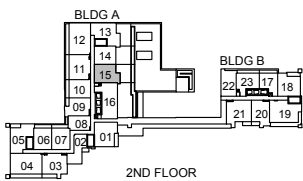
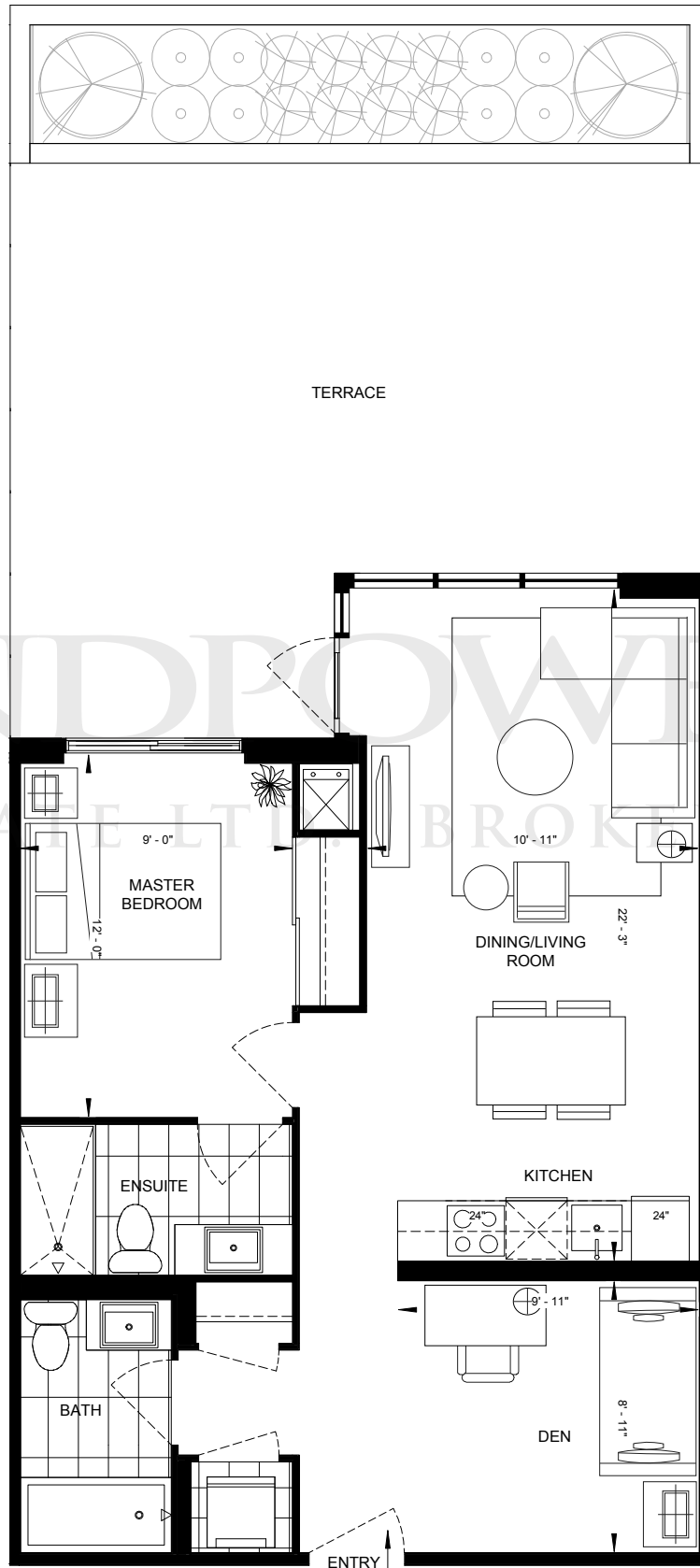


Whenever there are any discrepancies between the dimensions, areas and layout as set out in this Schedule D, and any marketing materials or brochures, the dimensions, areas and layout in the Schedule D shall govern. Dimensions, specifications, layouts, location of materials and fixtures, tile floor patterns and architectural detailing (including window size and location and door size, location and swing) are approximate only and are subject to change or modifications, without notice. Where there is a metal element indicated, metal element's dimension, size and location are approximate only and subject to change without notice. Actual usable floor space varies from stated floor area. Orientation of suite may be reversed and Purchaser agrees to accept same. Balcones, decks and terraces are exclusive use common elements shown for display purposes only and location and size are subject to change without notice. All illustrations are artist concepts only. The provisions of Schedule 'X' of the Agreement, including Section 6 and 38, apply to the Schedule, F, & O.F.

D'or

LANDPOWER
CONDOMINIUMS
AT THORNHILL CITY CENTRE
REAL ESTATE LTD. BROKERAGE

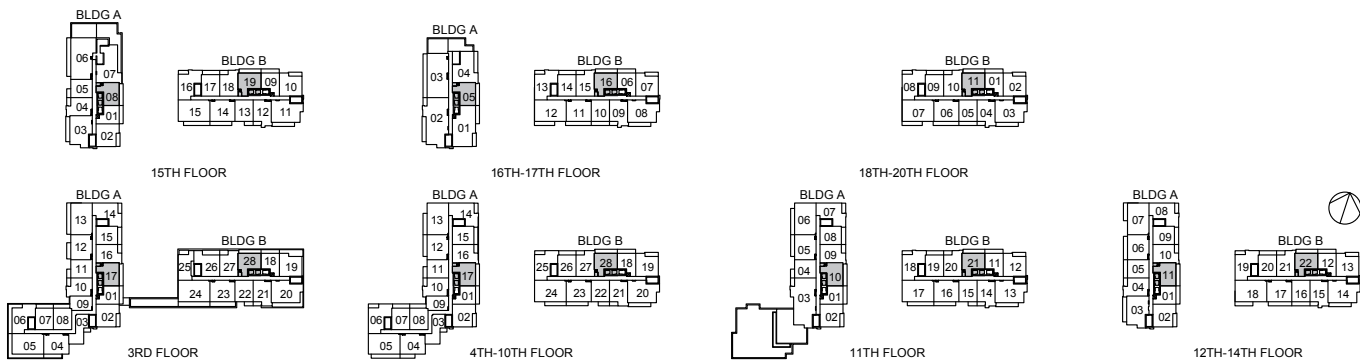
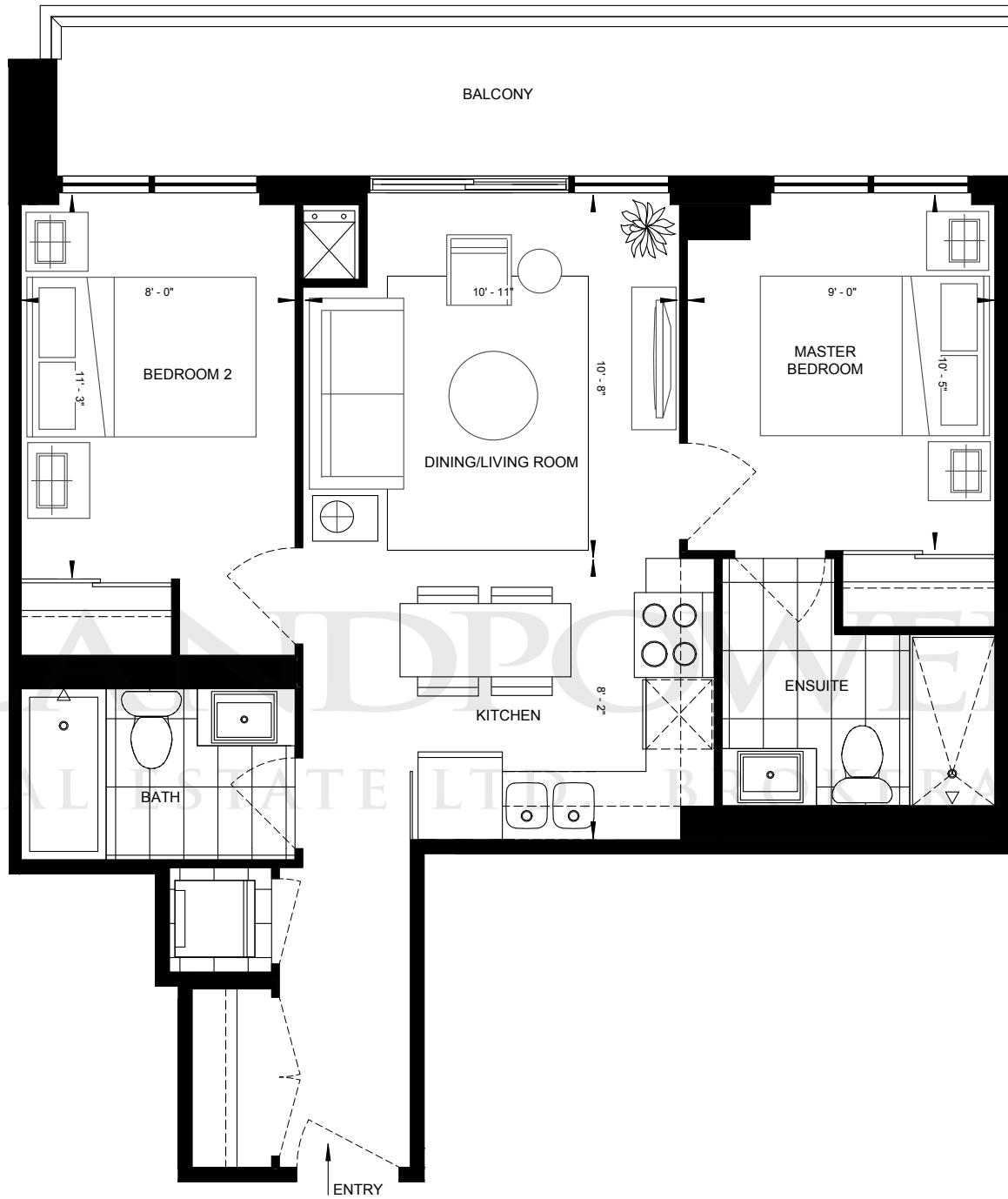
ONE BEDROOM + DEN | 1BD-D-T | 728 SQ. FT.



D'or

LANDPOWER
CONDOMINIUMS
REAL ESTATE LTD. BROKERAGE
AT THORNHILL CITY CENTRE

TWO BEDROOM | 2B-A | 699 SQ. FT.



Whenever there are any discrepancies between the dimensions, areas and layout as set out in this Schedule D, and any marketing materials or brochures, the dimensions, areas and layout in the Schedule D shall govern. Dimensions, specifications, layouts, location of materials and fixtures, tile floor patterns and architectural detailing (including window size and location and door size, location and swing) are approximate only and are subject to change or modifications, without notice. Where there is a metal element indicated, metal element's dimension, size and location are approximate only and subject to change without notice. Actual usable floor space varies from stated floor area. Orientation of suite may be reversed and Purchaser agrees to accept same. Balconies, decks and terraces are exclusive use common elements shown for display purposes only and location and size are subject to change without notice. All illustrations are artist concepts only. The provisions of Schedule "X" of the Agreement, including Section 6 and 38, apply to the Schedule. E. & O.E.

D'or

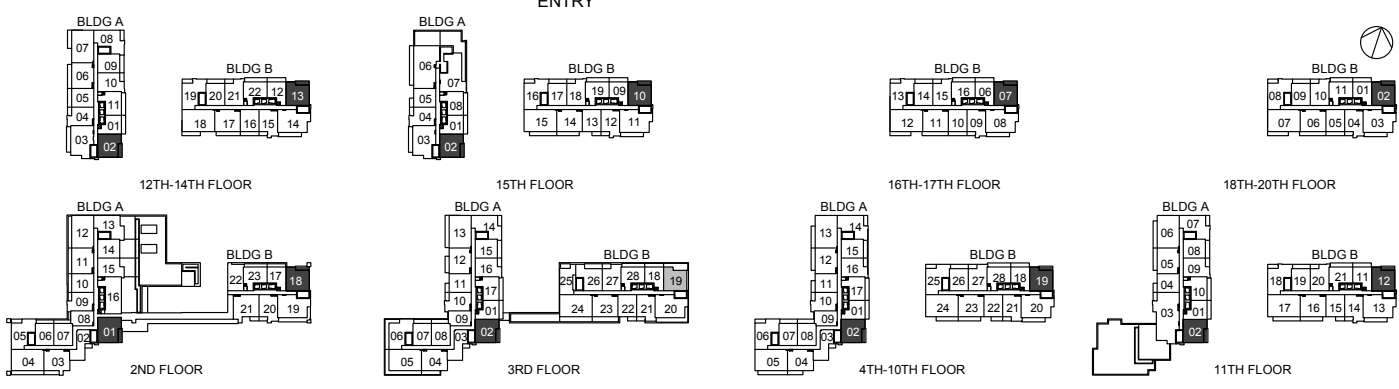
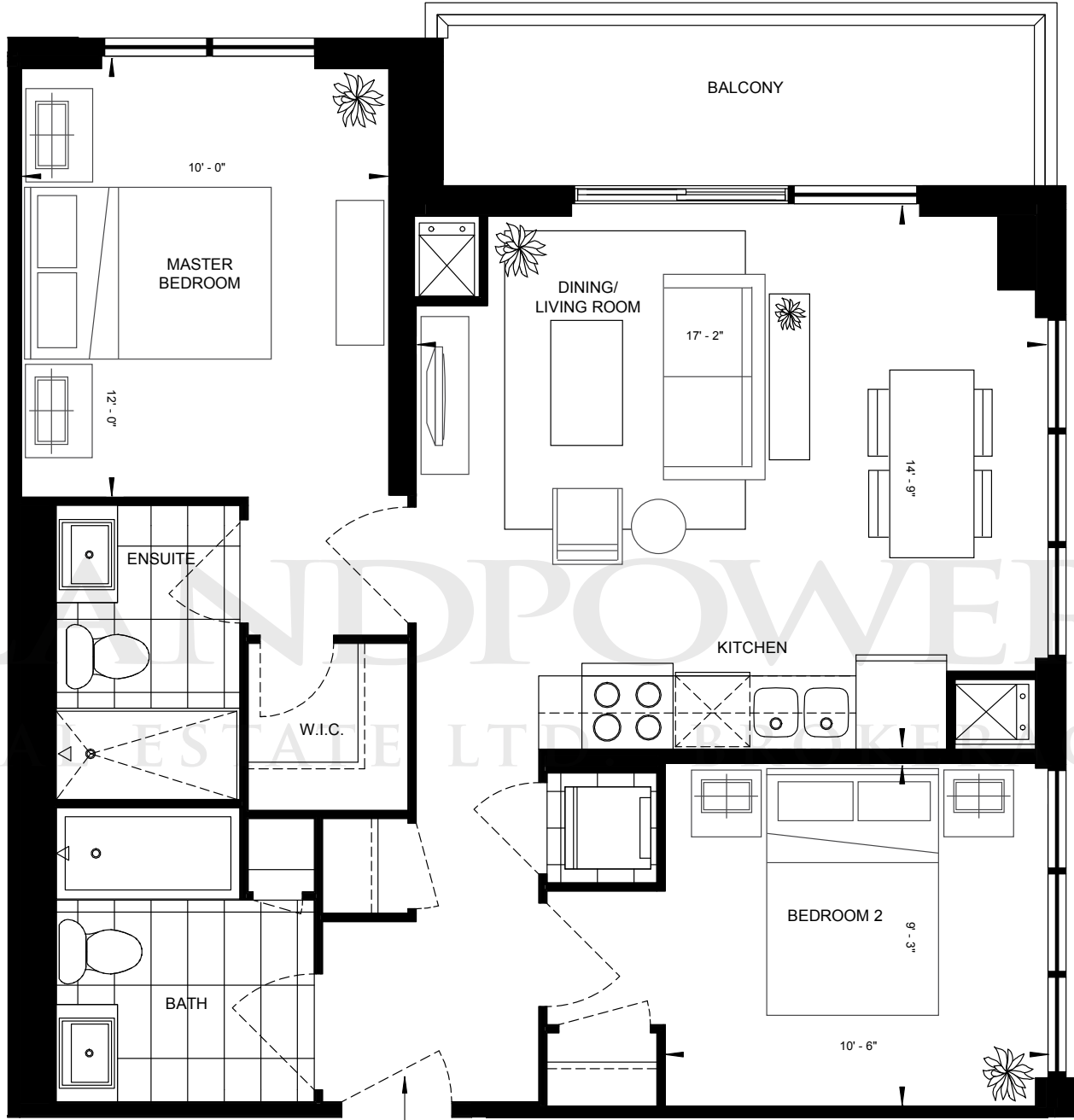
CONDOMINIUMS
AT THORNHILL CITY CENTRE

LANDPOWER
REAL ESTATE LTD. BROKERAGE



2B-B(2)
BUILDING B - FLOOR 3 UNIT 19

TWO BEDROOM | 2B-B(1) | 809 SQ. FT.
ALTERNATIVE BALCONY

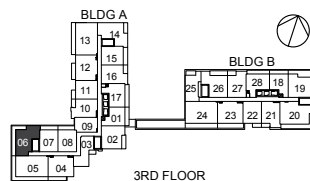
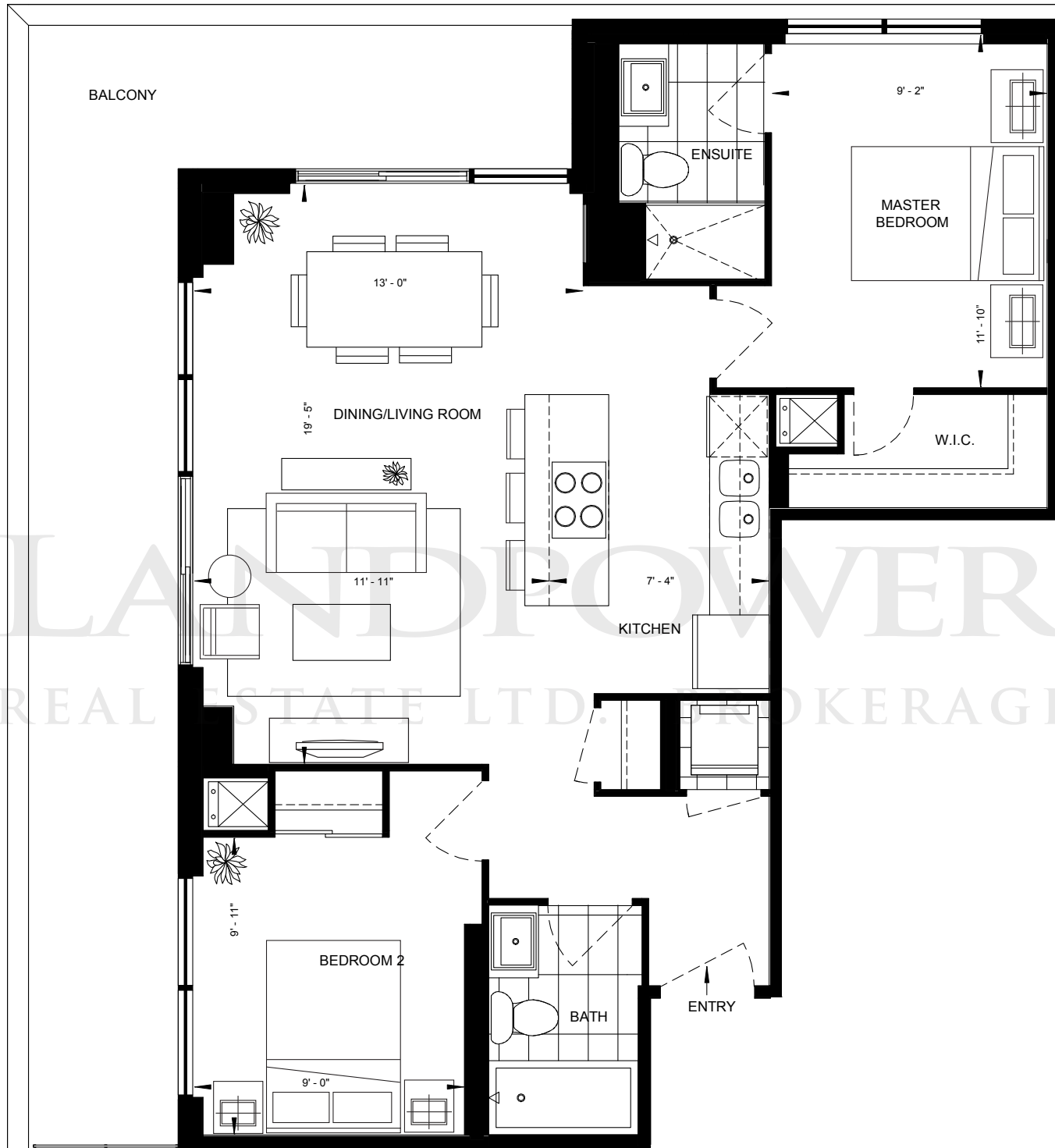


Whenever there are any discrepancies between the dimensions, areas and layout as set out in this Schedule D, and any marketing materials or brochures, the dimensions, areas and layout in the Schedule D shall govern. Dimensions, specifications, layouts, location of materials and fixtures, tile floor patterns and architectural detailing (including window size and location and door size, location and swing) are approximate only and are subject to change or modifications, without notice. Where there is a metal element indicated, metal element's dimension, size and location are approximate only and subject to change without notice. Actual usable floor space varies from stated floor area. Orientation of suite may be reversed and Purchaser agrees to accept same. Balconies, decks and terraces are exclusive use common elements shown for display purposes only and location and size are subject to change without notice. All illustrations are artist concepts only. The provisions of Schedule "X" of the Agreement, including Section 6 and 38, apply to the Schedule. E. & O.E.

D'or

LANDPOWER
CONDOMINIUMS
REAL ESTATE LTD. BROKERAGE
AT THORNHILL CITY CENTRE

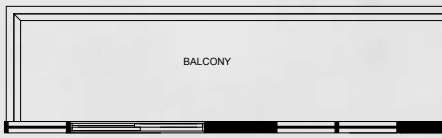
TWO BEDROOM | 2B-C(2) | 876 SQ. FT.



Whenever there are any discrepancies between the dimensions, areas and layout as set out in this Schedule D, and any marketing materials or brochures, the dimensions, areas and layout in the Schedule D shall govern. Dimensions, specifications, layouts, location of materials and fixtures, tile floor patterns and architectural detailing (including window size and location and door size, location and swing) are approximate only and are subject to change or modifications, without notice. Where there is a metal element indicated, metal element's dimension, size and location are approximate only and subject to change without notice. Actual usable floor space varies from stated floor area. Orientation of suite may be reversed and Purchaser agrees to accept same. Balconies, decks and terraces are exclusive use common elements shown for display purposes only and location and size are subject to change without notice. All illustrations are artist concepts only. The provisions of Schedule "X" of the Agreement, including Section 6 and 38, apply to the Schedule. E. & O.E.

D'or

CONDOMINIUMS AT THORNHILL CITY CENTRE



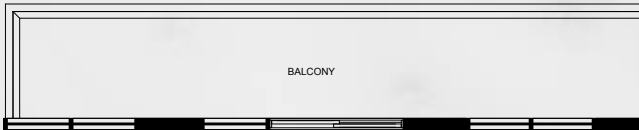
2B-D(1)
BUILDING A - FLOOR 2 UNIT 3, FLOOR 3-10 UNIT 4



2B-D(2.1)
BUILDING B - FLOOR 8 UNIT 23, FLOOR 20 UNIT 6



2B-D(2.2)
BUILDING A - FLOOR 3 & 8 UNIT 12



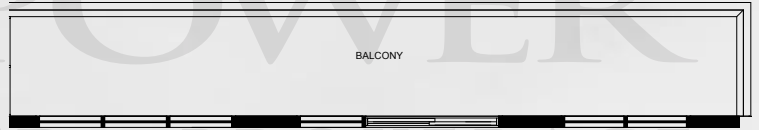
2B-D(3.2)
BUILDING A - FLOOR 4-10 UNIT 12, FLOOR 11 UNIT 5, FLOOR 13 UNIT 6



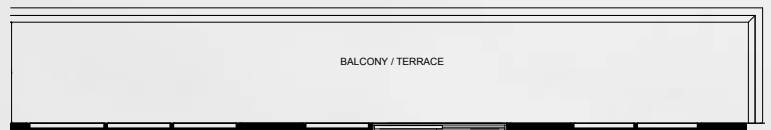
2B-D(4.1)
BUILDING B - FLOOR 12 UNIT 17



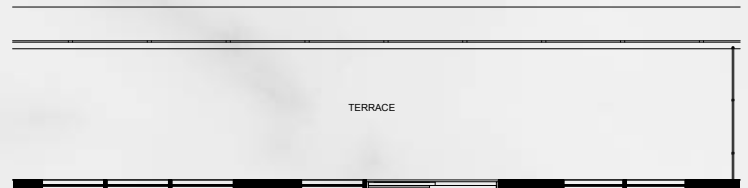
2B-D(4.2)
BUILDING A - FLOOR 12 UNIT 6



2B-D(5.1)
BUILDING B - FLOOR 7 UNIT 23, FLOOR 14 UNIT 17, FLOOR 16 UNIT 11, FLOOR 18 UNIT 6

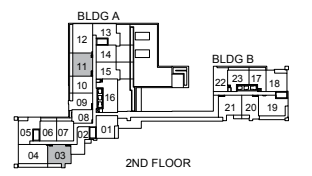
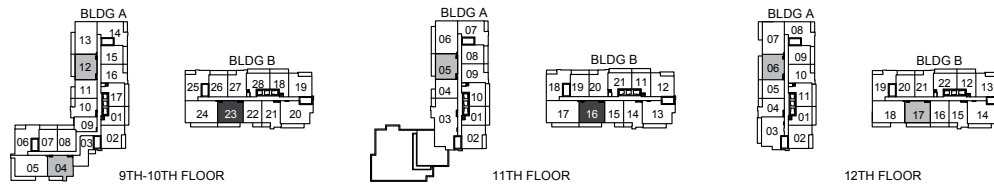
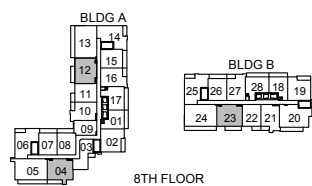
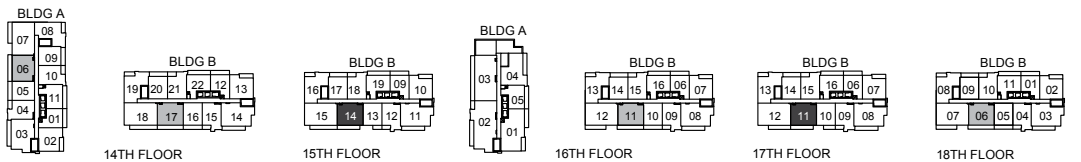
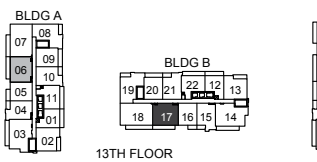
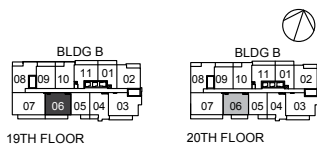
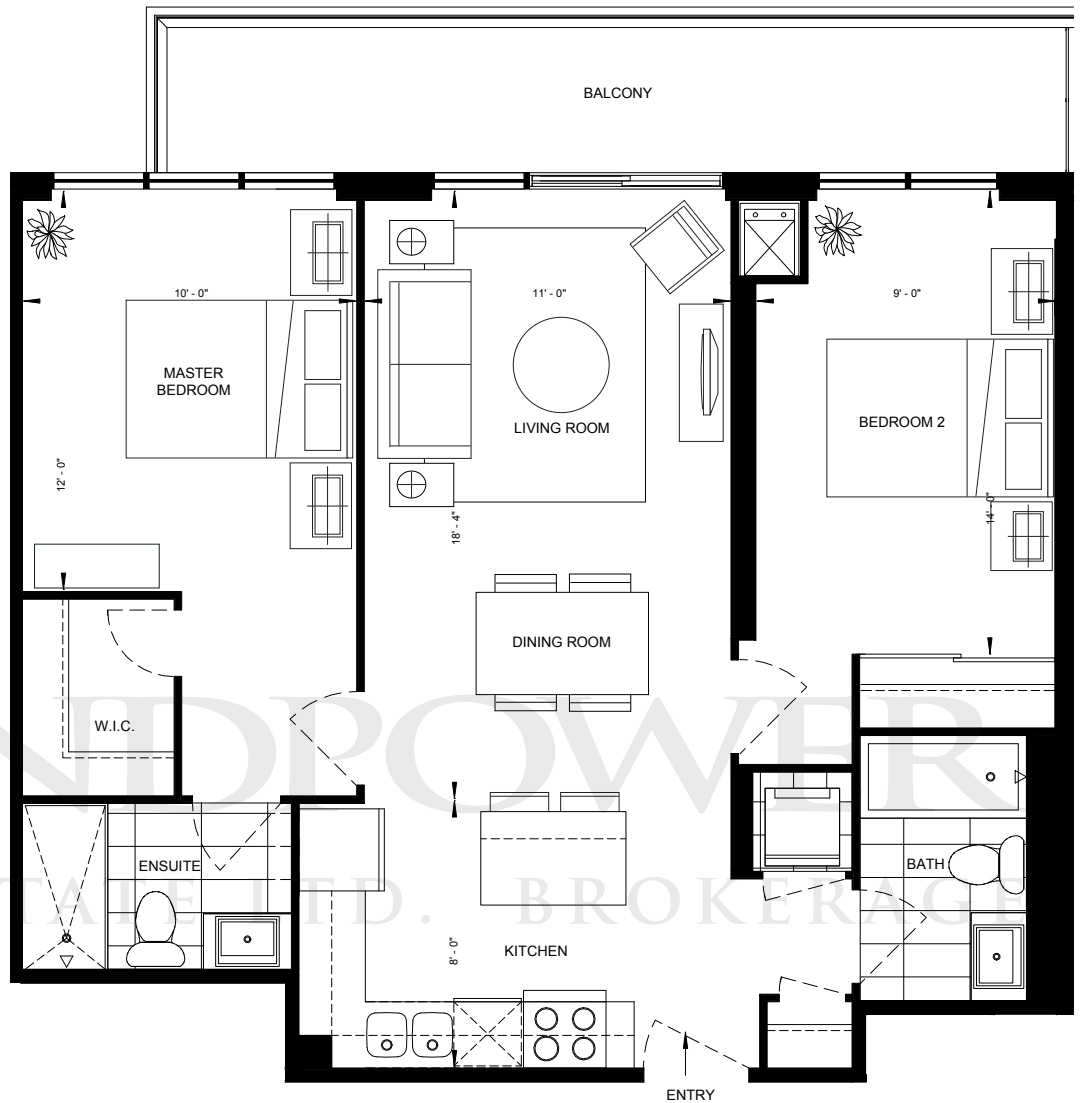


2B-D(5.2)
BUILDING A - FLOOR 2 UNIT 11, FLOOR 7 UNIT 12, FLOOR 14 UNIT 6



2B-D(6)
BUILDING B - FLOOR 3 UNIT 23

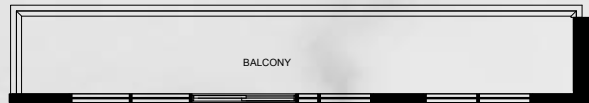
**TWO BEDROOM | 2B-D(3.1) | 868 SQ. FT.
ALTERNATIVE BALCONIES / TERRACES**



Whenever there are any discrepancies between the dimensions, areas and layout as set out in this Schedule D, and any marketing materials or brochures, the dimensions, areas and layout in the Schedule D shall govern. Dimensions, specifications, layouts, location of materials and fixtures, tile floor patterns and architectural detailing (including window size and location and door size, location and swing) are approximate only and are subject to change or modifications, without notice. Where there is a metal element indicated, metal element's dimension, size and location are approximate only and subject to change without notice. Actual usable floor space varies from stated floor area. Orientation of suite may be reversed and Purchaser agrees to accept same. Balconies, decks and terraces are exclusive use common elements shown for display purposes only and location and size are subject to change without notice. All illustrations are artist concepts only. The provisions of Schedule "X" of the Agreement, including Section 6 and 38, apply to the Schedule. E. & O.E.

D'or

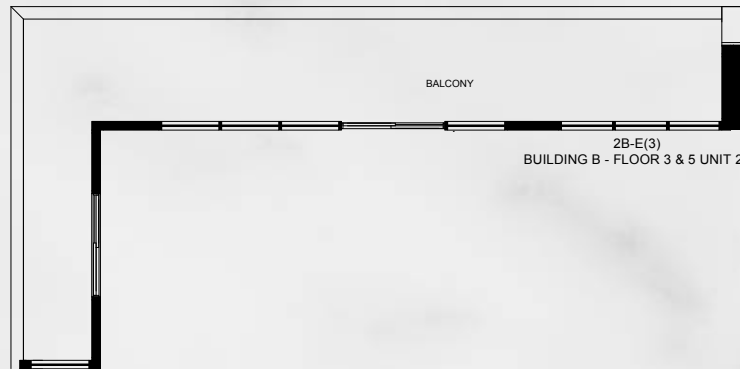
CONDOMINIUMS AT THORNHILL CITY CENTRE



2B-E(1.1)
BUILDING A - FLOOR 12-15 UNIT 3

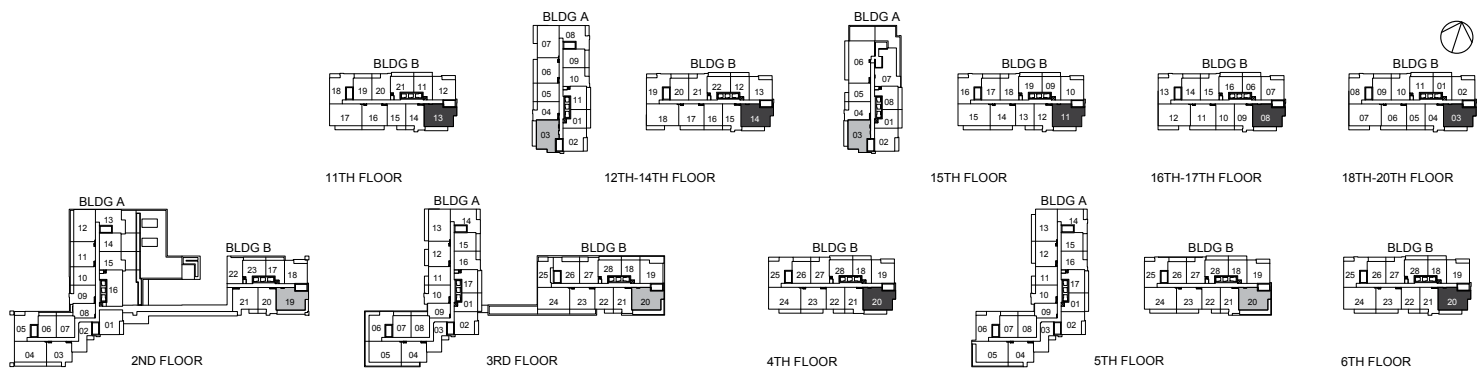
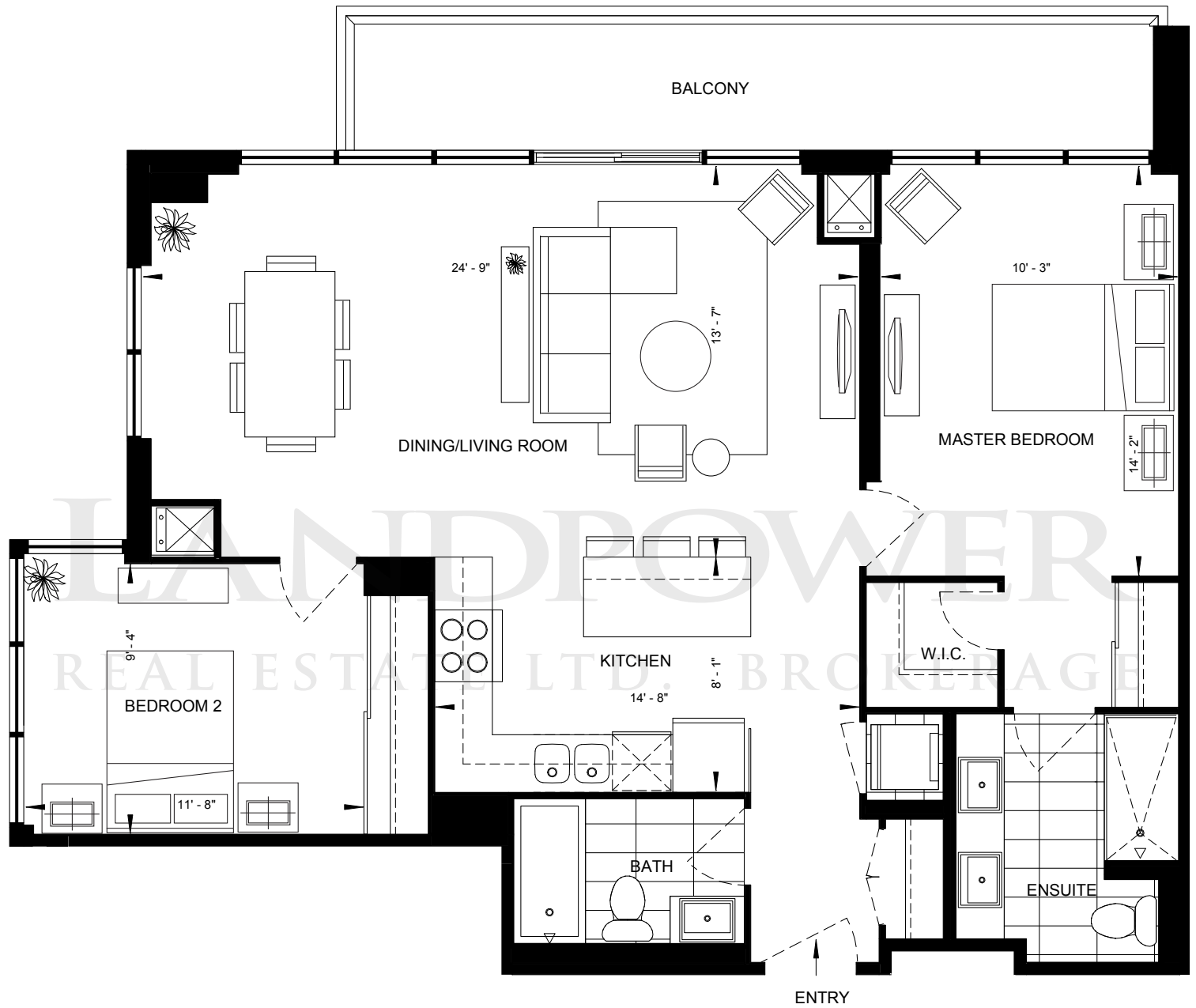


2B-E(2)
BUILDING B - FLOOR 2 UNIT 19



2B-E(3)
BUILDING B - FLOOR 3 & 5 UNIT 20

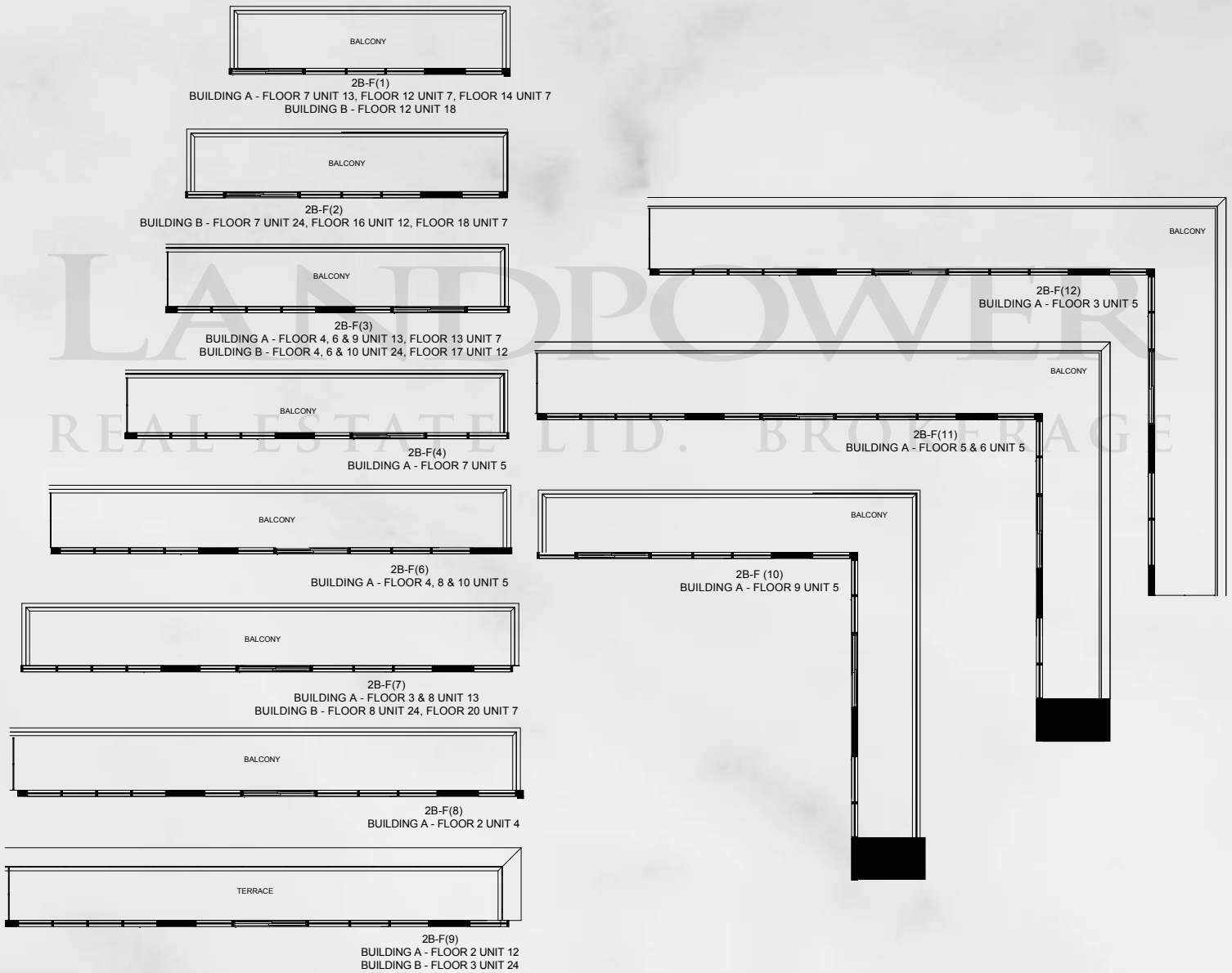
TWO BEDROOM | 2B-E(1.2) | 1068 SQ. FT.
ALTERNATIVE BALCONIES



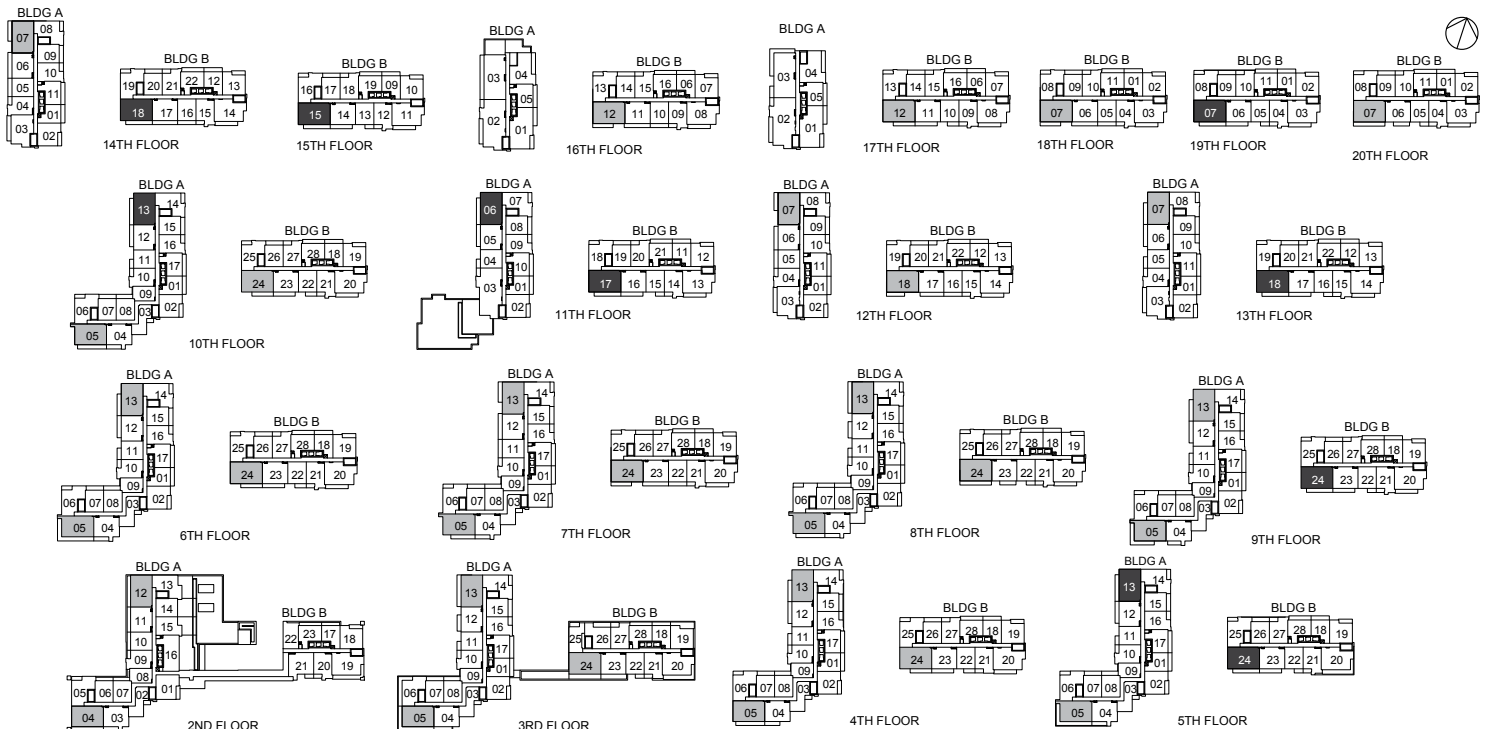
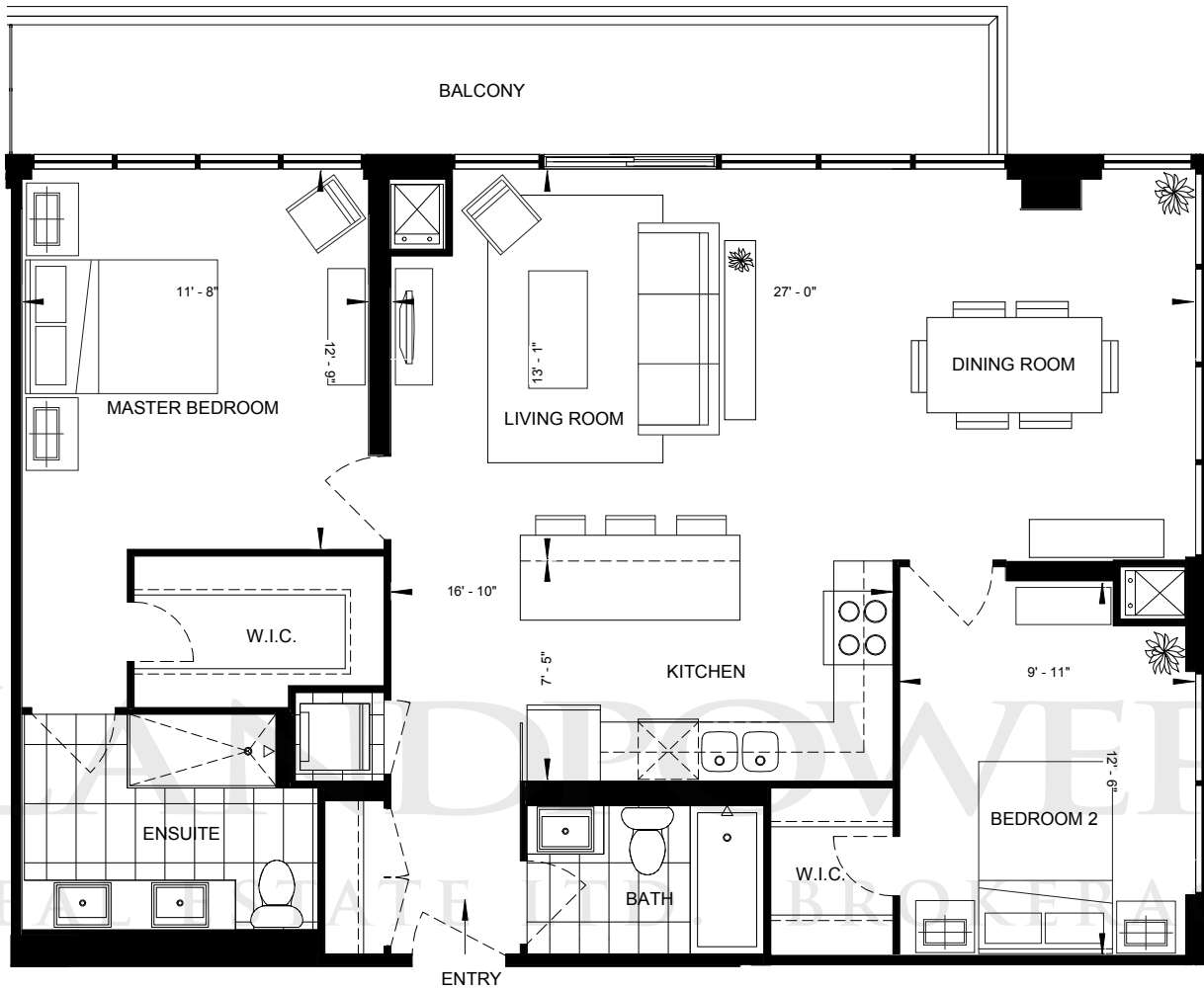
Whenever there are any discrepancies between the dimensions, areas and layout as set out in this Schedule D, and any marketing materials or brochures, the dimensions, areas and layout in the Schedule D shall govern. Dimensions, specifications, layouts, location of materials and fixtures, tile floor patterns and architectural detailing (including window size and location and door size, location and swing) are approximate only and are subject to change or modifications, without notice. Where there is a metal element indicated, metal element's dimension, size and location are approximate only and subject to change without notice. Actual usable floor space varies from stated floor area. Orientation of suite may be reversed and Purchaser agrees to accept same. Balconies, decks and terraces are exclusive use common elements shown for display purposes only and location and size are subject to change without notice. All illustrations are artist concepts only. The provisions of Schedule "X" of the Agreement, including Section 6 and 38, apply to the Schedule. E. & O.E.

D'or

CONDOMINIUMS AT THORNHILL CITY CENTRE



**TWO BEDROOM | 2B-F(5) | 1128 SQ. FT.
ALTERNATIVE BALCONIES / TERRACE**

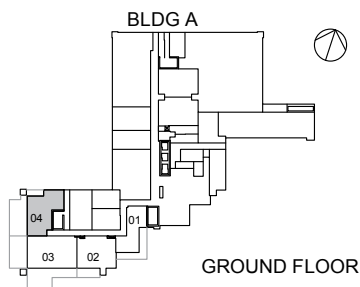
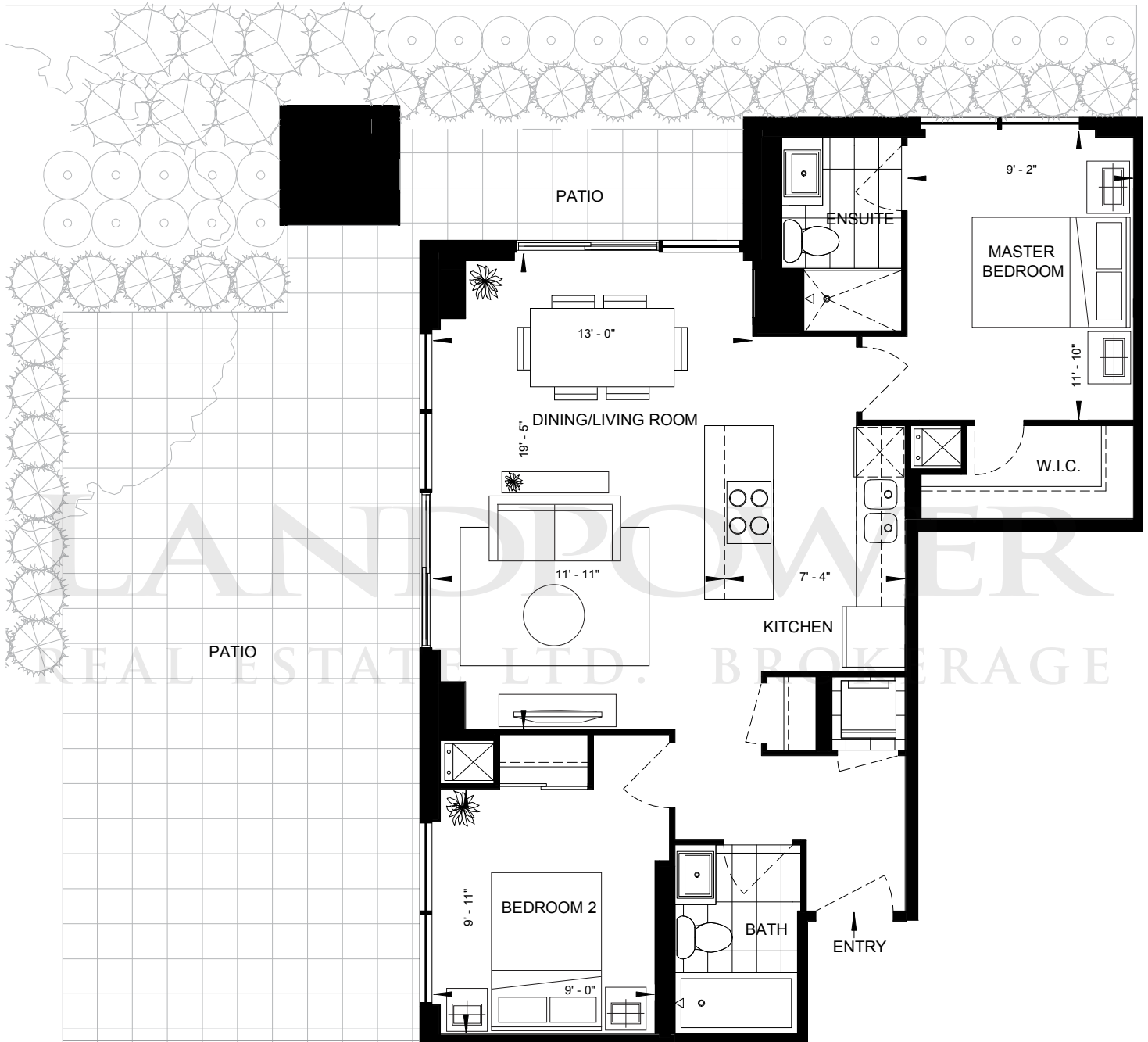


Whenever there are any discrepancies between the dimensions, areas and layout as set out in this Schedule D, and any marketing materials or brochures, the dimensions, areas and layout in the Schedule D shall govern. Dimensions, specifications, layouts, location of materials and fixtures, tile floor patterns and architectural detailing (including window size and location and door size, location and swing) are approximate only and are subject to change or modifications, without notice. Where there is a metal element indicated, metal element's dimension, size and location are approximate only and subject to change without notice. Actual usable floor space varies from stated floor area. Orientation of suite may be reversed and Purchaser agrees to accept same. Balconies, decks and terraces are exclusive use common elements shown for display purposes only and location and size are subject to change without notice. All illustrations are artist concepts only. The provisions of Schedule "X" of the Agreement, including Section 6 and 38, apply to the Schedule. E & O.E.

D'or

LANDPOWER
CONDOMINIUMS
AT THORNHILL CITY CENTRE
REAL ESTATE LTD. BROKERAGE

TWO BEDROOM | 2B-C-P | 876 SQ. FT.

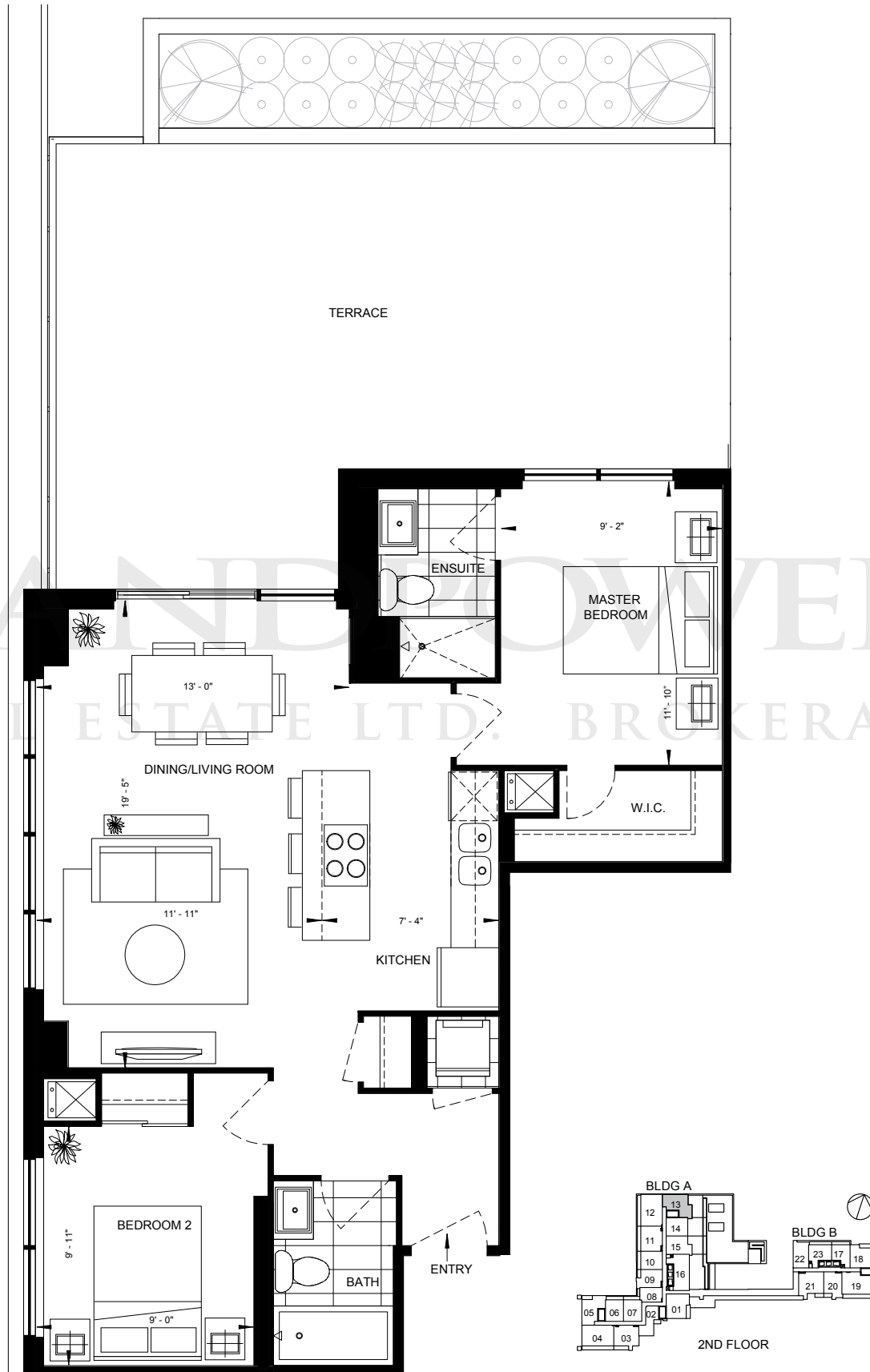


GROUND FLOOR

D'or

LANDPOWER
CONDOMINIUMS
REAL ESTATE LTD. BROKERAGE
AT THORNHILL CITY CENTRE

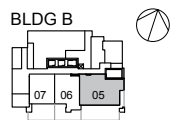
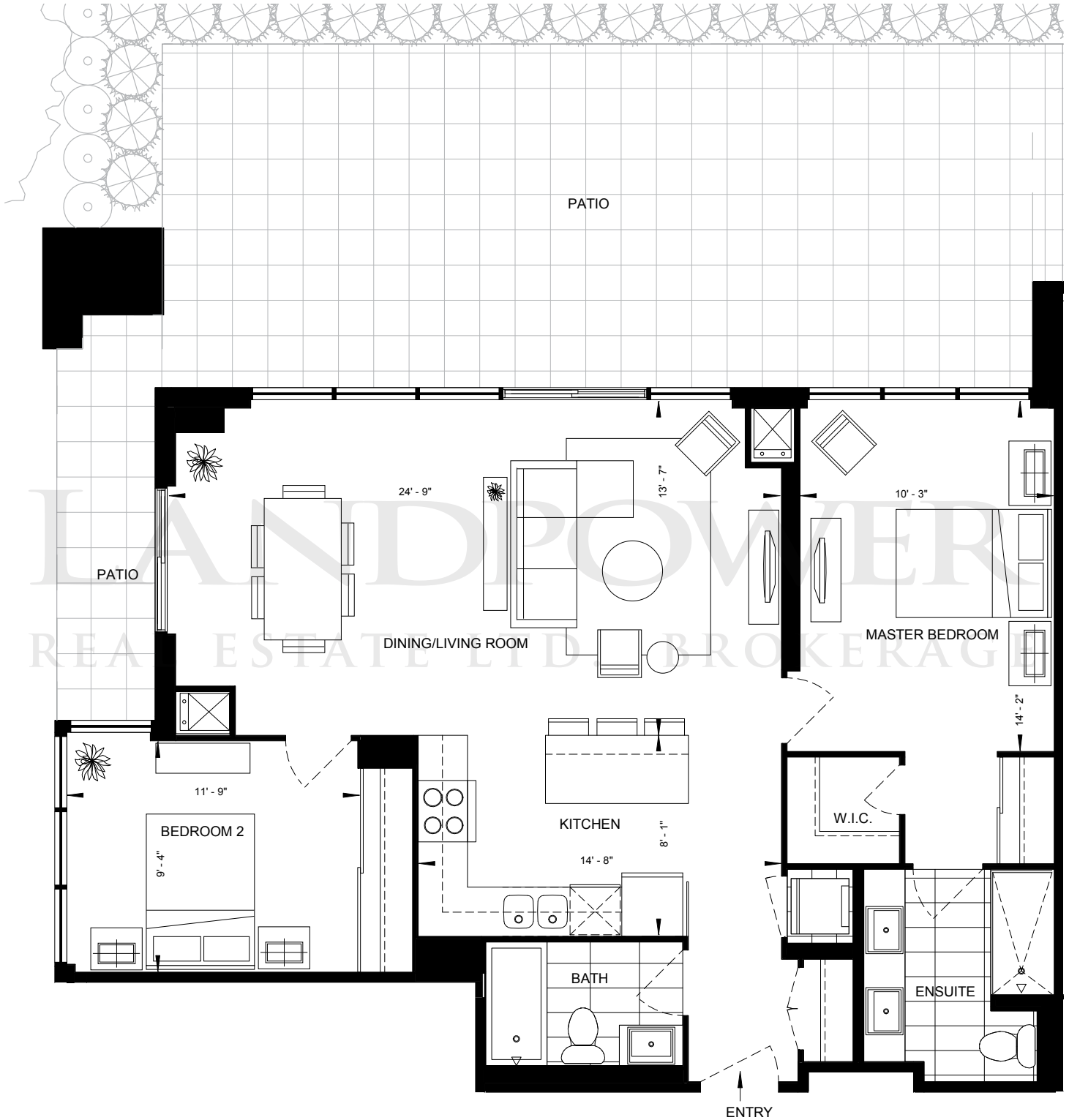
TWO BEDROOM | 2B-C-T | 876 SQ. FT.



D'or

LANDPOWER
CONDOMINIUMS
AT THORNHILL CITY CENTRE
REAL ESTATE LTD. BROKERAGE

TWO BEDROOM | 2B-E-P | 1068 SQ. FT.



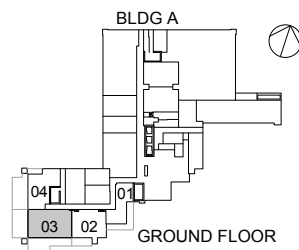
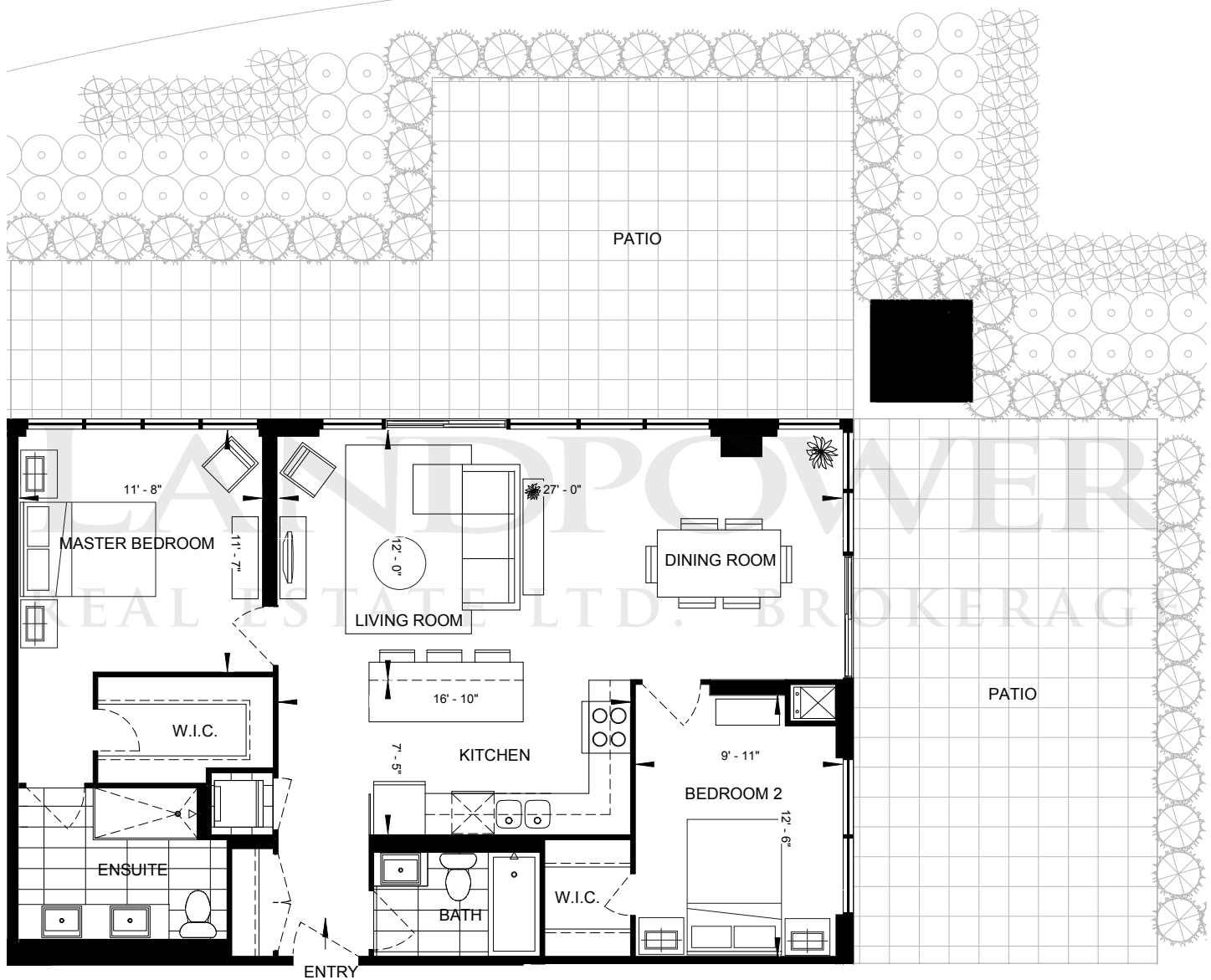
GROUND FLOOR

Whenever there are any discrepancies between the dimensions, areas and layout as set out in this Schedule D, and any marketing materials or brochures, the dimensions, areas and layout in the Schedule D shall govern. Dimensions, specifications, layouts, location of materials and fixtures, tile floor patterns and architectural detailing (including window size and location and door size, location and swing) are approximate only and are subject to change or modifications, without notice. Where there is a metal element indicated, metal element's dimension, size and location are approximate only and subject to change without notice. Actual usable floor space varies from stated floor area. Orientation of suite may be reversed and Purchaser agrees to accept same. Balconies, decks and terraces are exclusive use common elements shown for display purposes only and location and size are subject to change without notice. All illustrations are artist concepts only. The provisions of Schedule "X" of the Agreement, including Section 6 and 38, apply to the Schedule. E. & O.E.

D'or

LANDPOWER
CONDOMINIUMS
AT THORNHILL CITY CENTRE
REAL ESTATE LTD. BROKERAGE

TWO BEDROOM | 2B-F-P | 1083 SQ. FT.

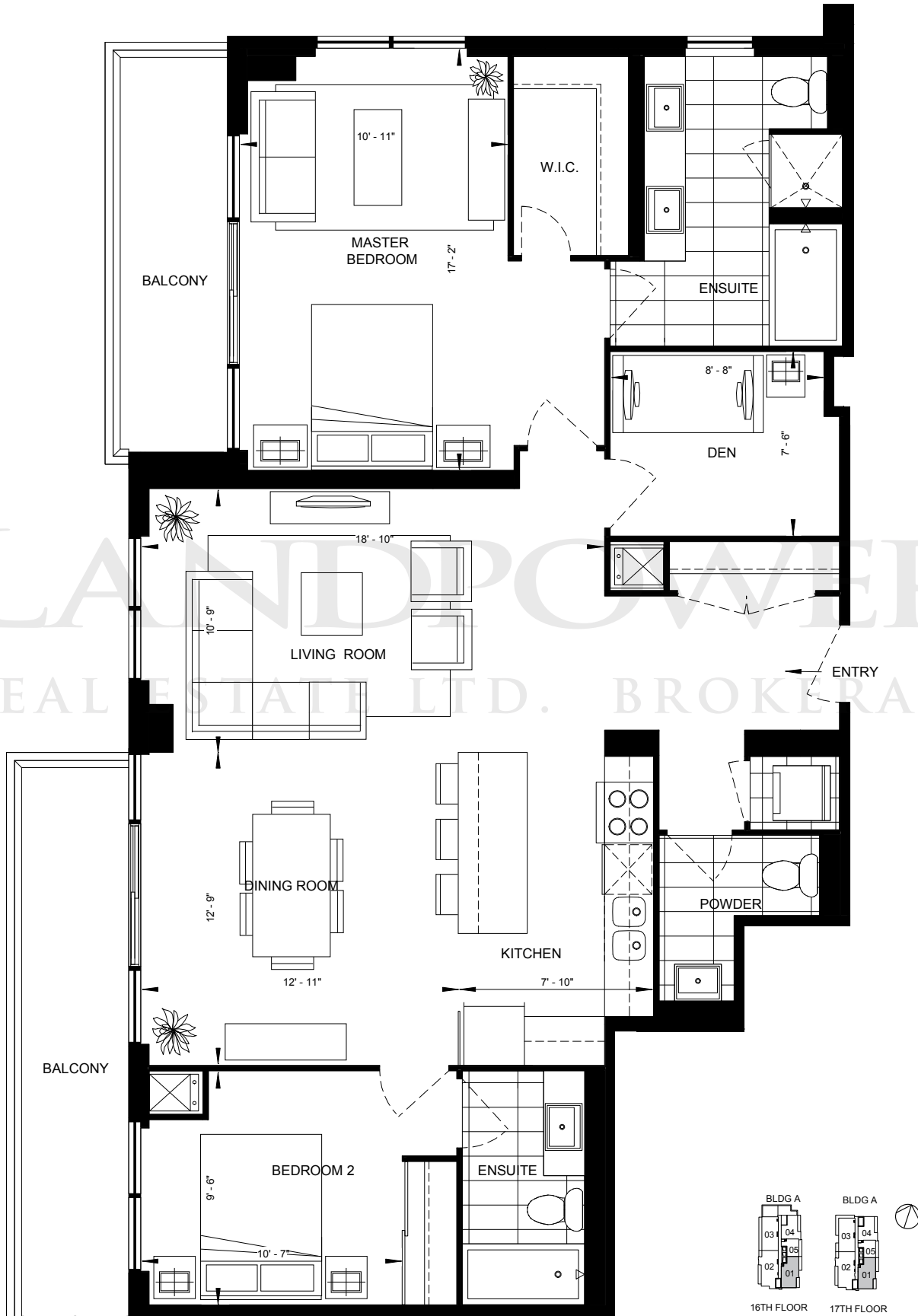


Whenever there are any discrepancies between the dimensions, areas and layout as set out in this Schedule D, and any marketing materials or brochures, the dimensions, areas and layout in the Schedule D shall govern. Dimensions, specifications, layouts, location of materials and fixtures, tile floor patterns and architectural detailing (including window size and location and door size, location and swing) are approximate only and are subject to change or modifications, without notice. Where there is a metal element indicated, metal element's dimension, size and location are approximate only and subject to change without notice. Actual usable floor space varies from stated floor area. Orientation of suite may be reversed and Purchaser agrees to accept same. Balconies, decks and terraces are exclusive use common elements shown for display purposes only and location and size are subject to change without notice. All illustrations are artist concepts only. The provisions of Schedule "X" of the Agreement, including Section 6 and 38, apply to the Schedule. E. & O.E.

D'or

LANDPOWER
CONDOMINIUMS
AT THORNHILL CITY CENTRE
REAL ESTATE LTD. BROKERAGE

TWO BEDROOM + DEN | 2BD-F | 1395 SQ. FT.

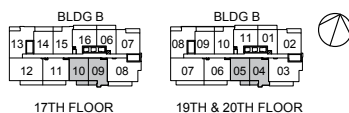


Whenever there are any discrepancies between the dimensions, areas and layout as set out in this Schedule D, and any marketing materials or brochures, the dimensions, areas and layout in the Schedule D shall govern. Dimensions, specifications, layouts, location of materials and fixtures, tile floor patterns and architectural detailing (including window size and location and door size, location and swing) are approximate only and are subject to change or modifications, without notice. Where there is a metal element indicated, metal element's dimension, size and location are approximate only and subject to change without notice. Actual usable floor space varies from stated floor area. Orientation of suite may be reversed and Purchaser agrees to accept same. Balconies, decks and terraces are exclusive use common elements shown for display purposes only and location and size are subject to change without notice. All illustrations are artist concepts only. The provisions of Schedule "X" of the Agreement, including Section 6 and 38, apply to the Schedule. E. & O.E.

D'or

LANDPOWER
CONDOMINIUMS
AT THORNHILL CITY CENTRE
REAL ESTATE LTD. BROKERAGE

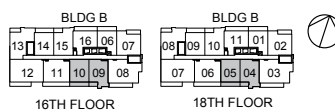
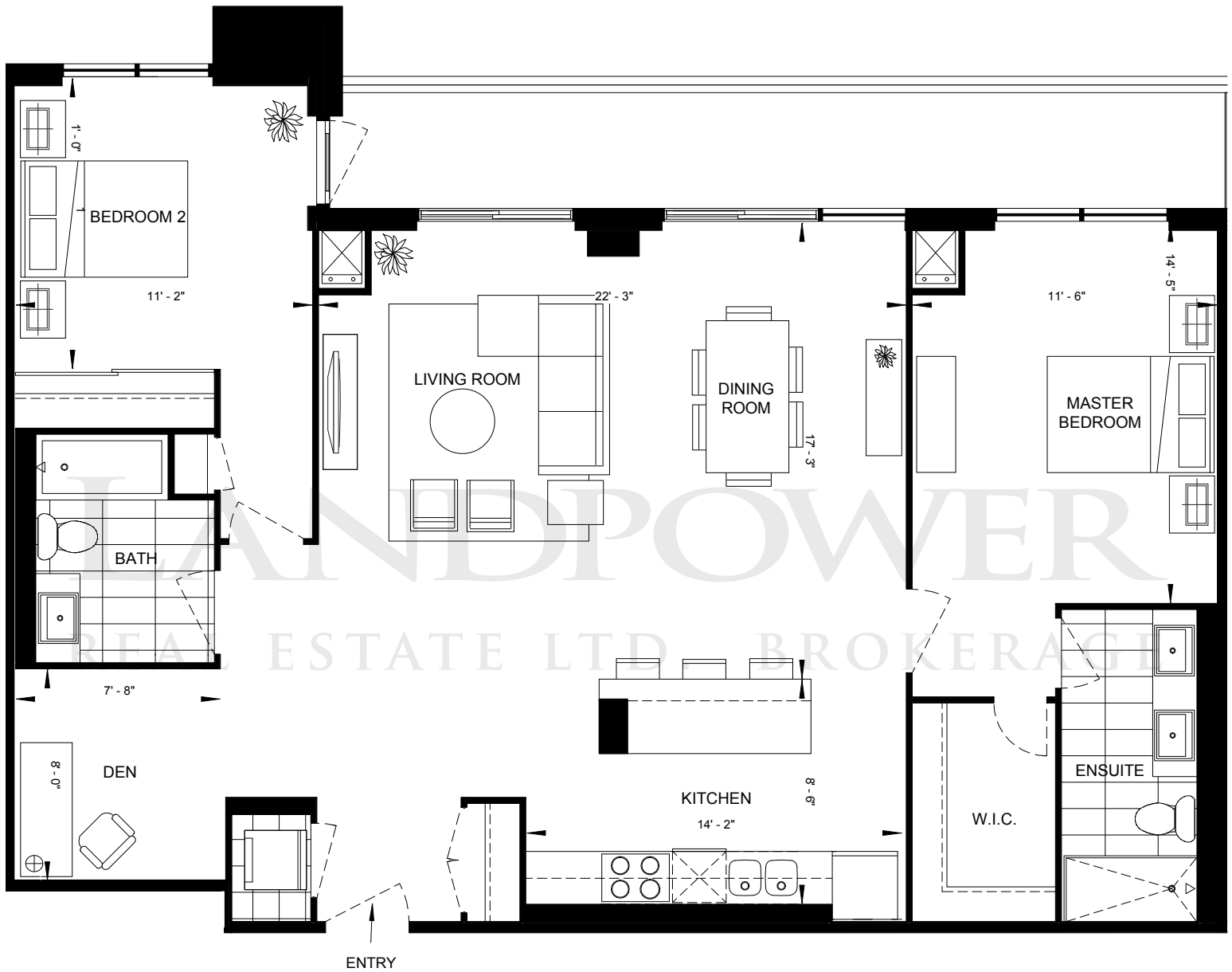
TWO BEDROOM + DEN | 2BD-H-1 | 1361 SQ. FT.



D'or

LANDPOWER
CONDOMINIUMS
AT THORNHILL CITY CENTRE
REAL ESTATE LTD. BROKERAGE

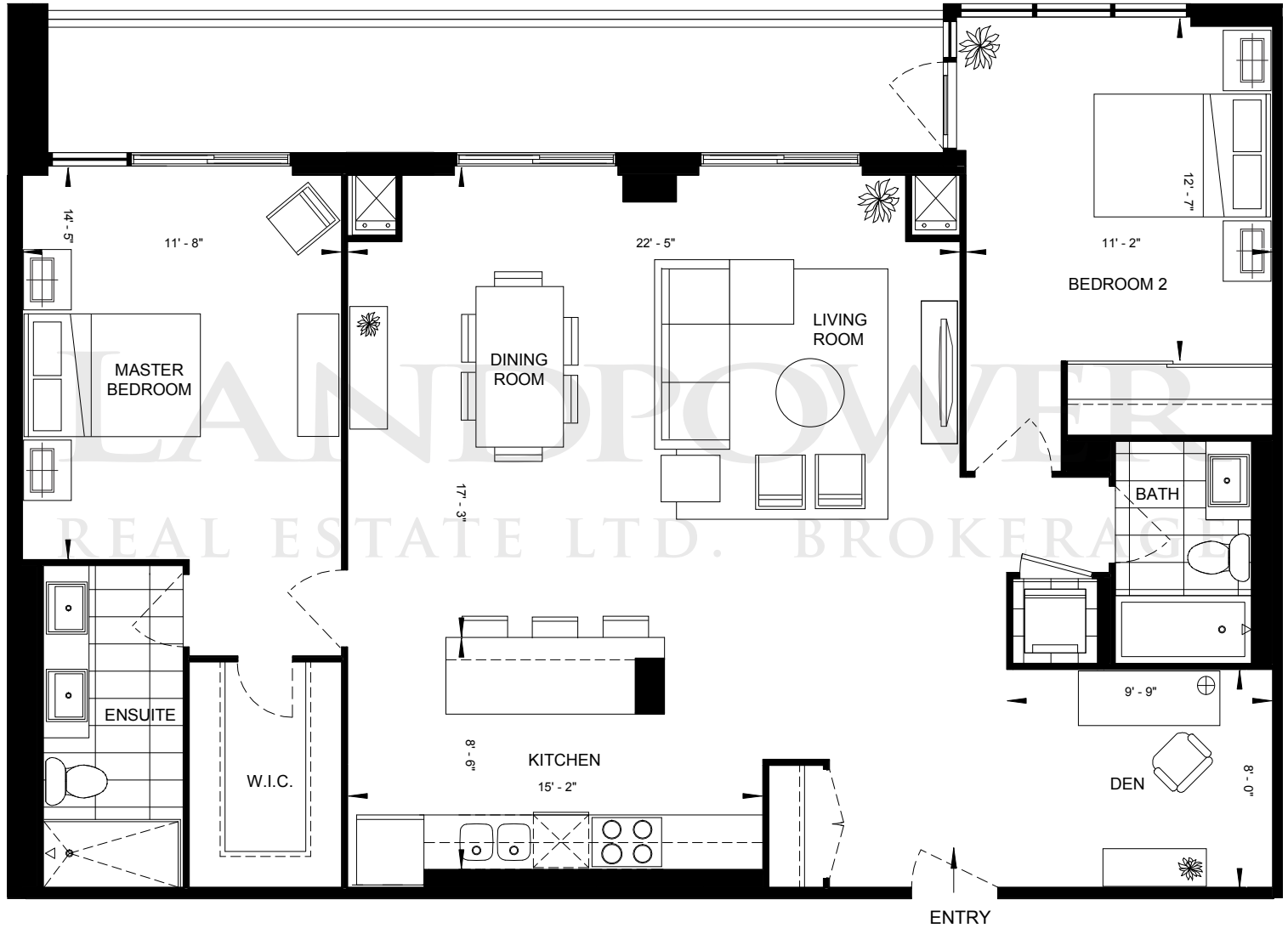
TWO BEDROOM + DEN | 2BD-H-2 | 1361 SQ. FT.



D'or

LANDPOWER
CONDOMINIUMS
REAL ESTATE LTD. BROKERAGE
AT THORNHILL CITY CENTRE

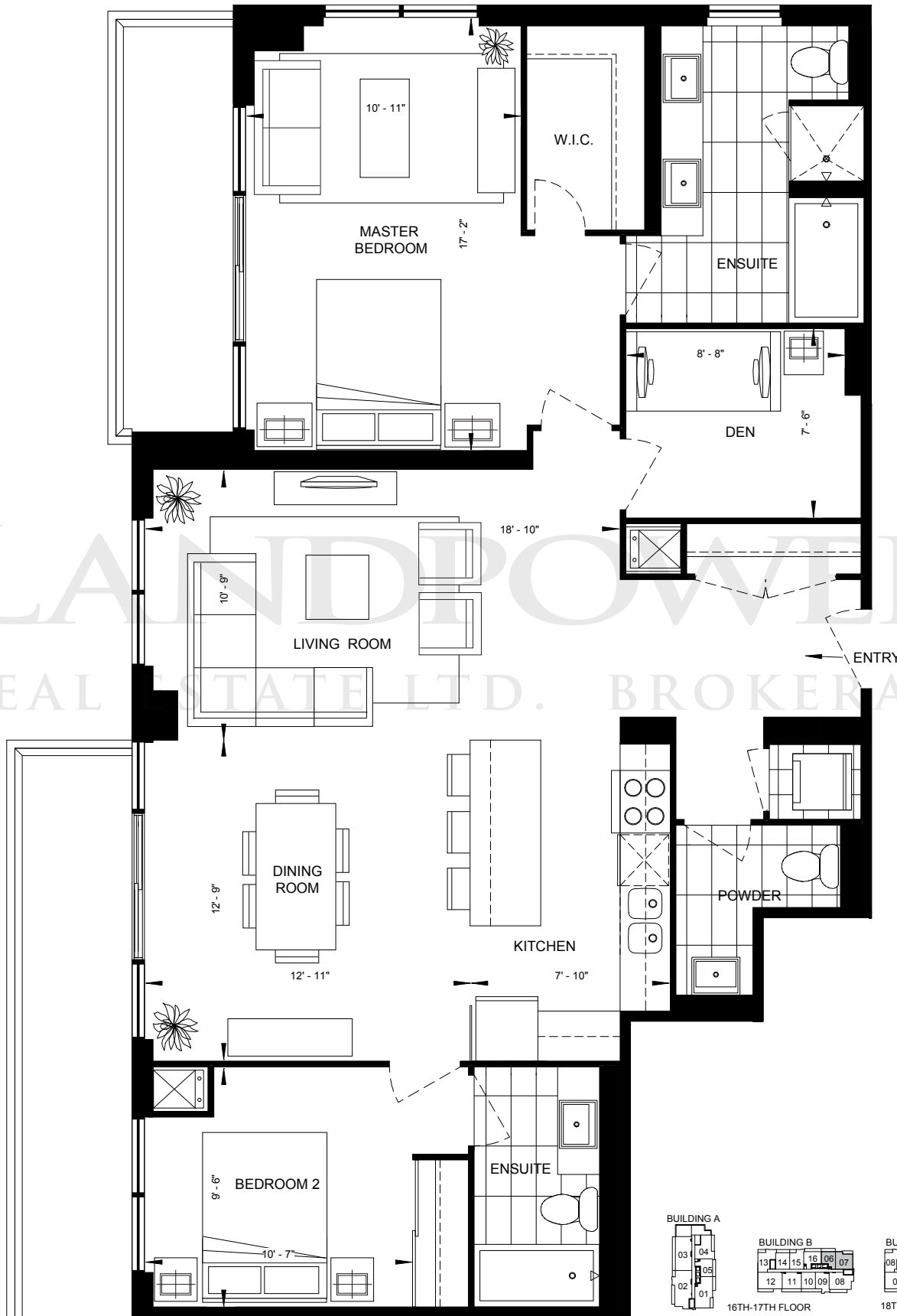
TWO BEDROOM + DEN | 2BD-J | 1380 SQ. FT.



D'or

LANDPOWER
CONDOMINIUMS
AT THORNHILL CITY CENTRE
REAL ESTATE LTD. BROKERAGE

TWO BEDROOM + DEN | 2BD-K | 1393 SQ. FT.

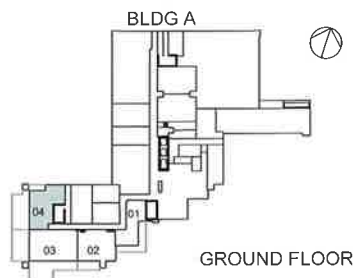
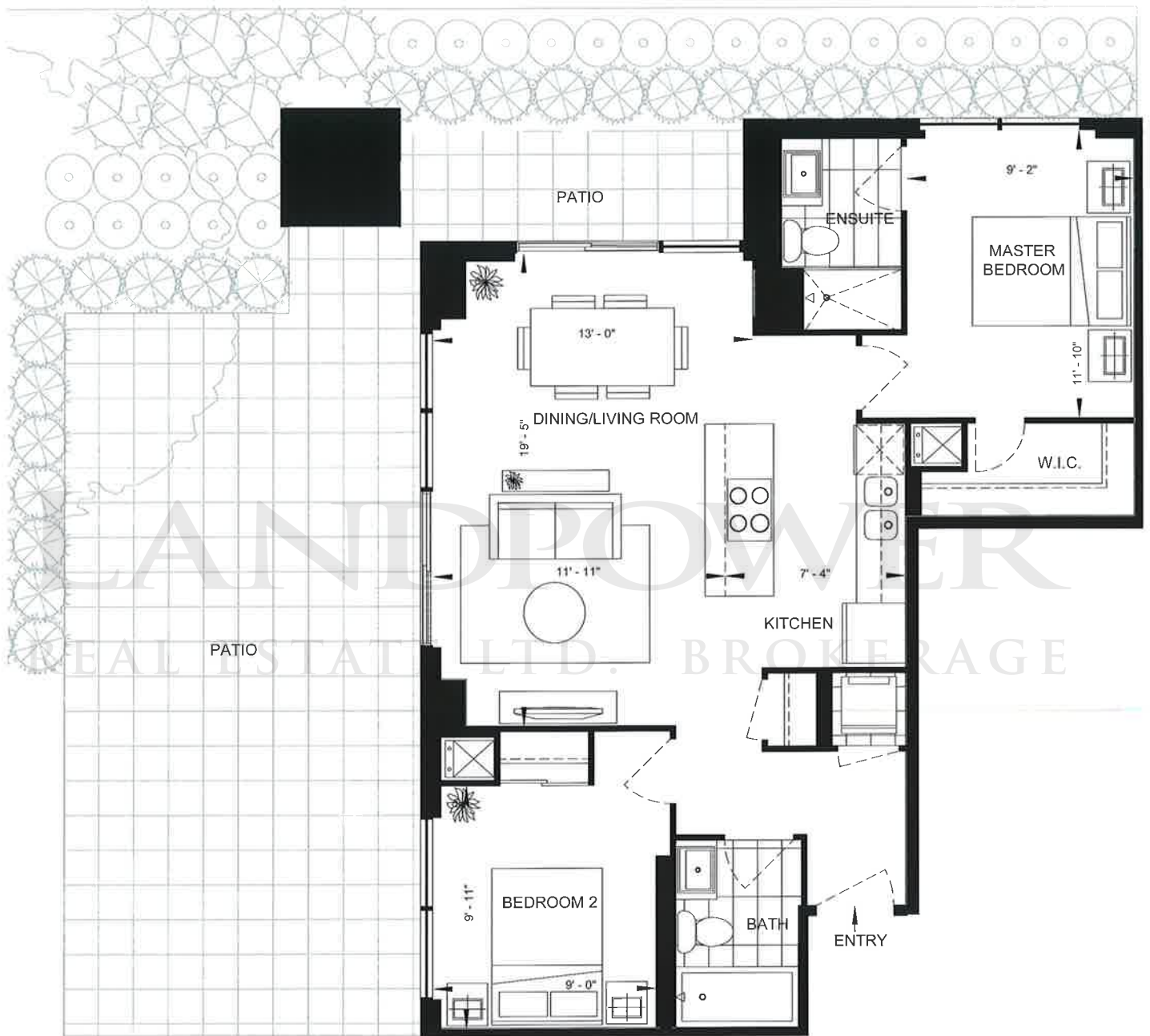


D'or

LANDPOWER
REAL ESTATE LTD. BROKERAGE

CONDOMINIUMS
AT THORNHILL CITY CENTRE

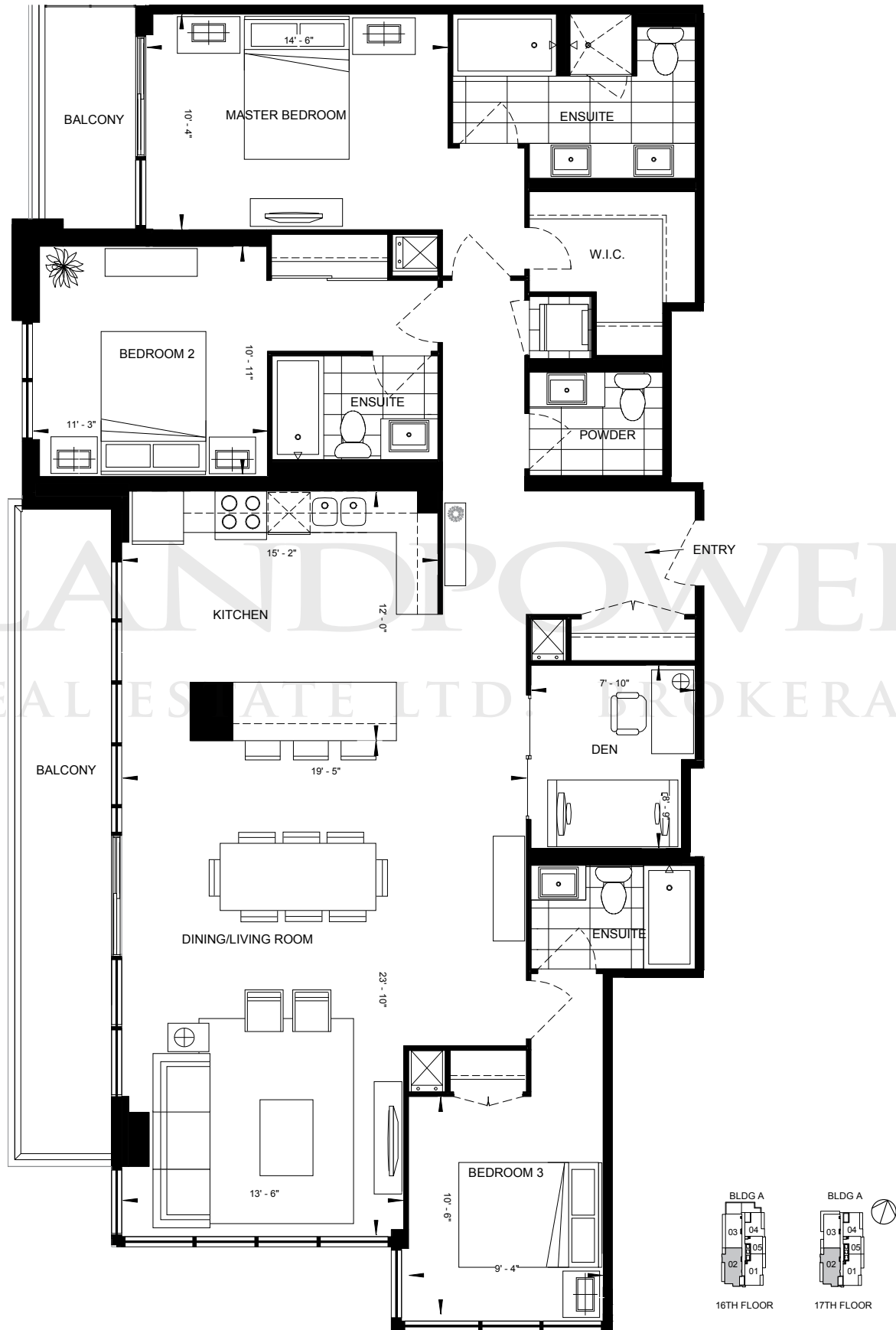
TWO BEDROOM | 2B-C-P | 876 SQ. FT.



D'or

LANDPOWER
CONDOMINIUMS
REAL ESTATE LTD. BROKERAGE
AT THORNHILL CITY CENTRE

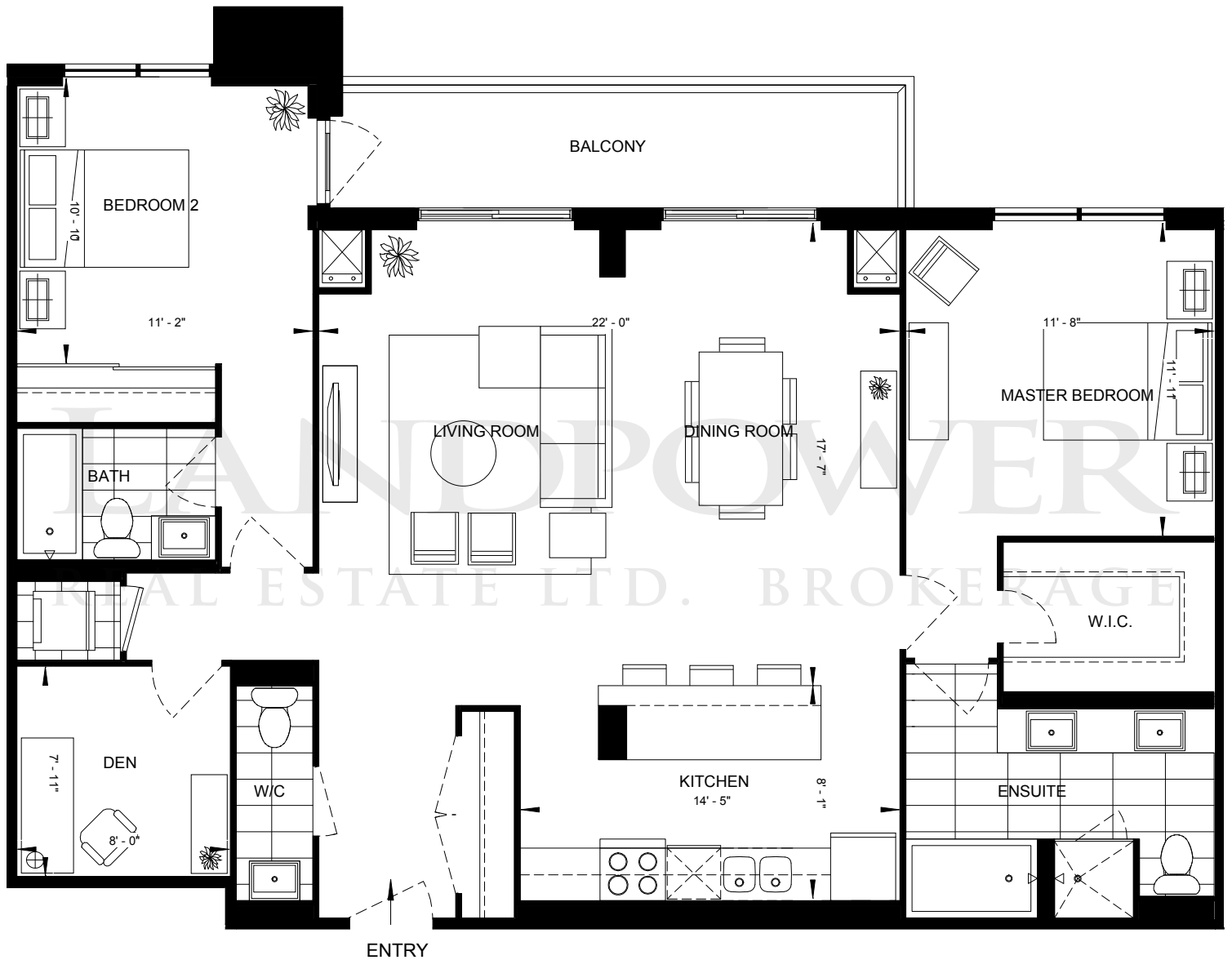
THREE BEDROOM + DEN | 3BD-B | 1776 SQ. FT.



D'or

LANDPOWER
CONDOMINIUMS
AT THORNHILL CITY CENTRE
REAL ESTATE LTD. BROKERAGE

TWO BEDROOM + DEN | 2BD-H CUSTOM | 1361 SQ. FT.



Whenever there are any discrepancies between the dimensions, areas and layout as set out in this Schedule D, and any marketing materials or brochures, the dimensions, areas and layout in the Schedule D shall govern. Dimensions, specifications, layouts, location of materials and fixtures, tile floor patterns and architectural detailing (including window size and location and door size, location and swing) are approximate only and are subject to change or modifications, without notice. Where there is a metal element indicated, metal element's dimension, size and location are approximate only and subject to change without notice. Actual usable floor space varies from stated floor area. Orientation of suite may be reversed and Purchaser agrees to accept same. Balconies, decks and terraces are exclusive use common elements shown for display purposes only and location and size are subject to change without notice. All illustrations are artist concepts only. The provisions of Schedule "X" of the Agreement, including Section 6 and 38, apply to the Schedule. E. & O.E.