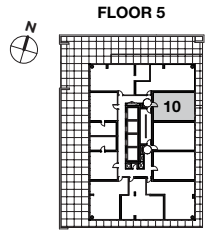
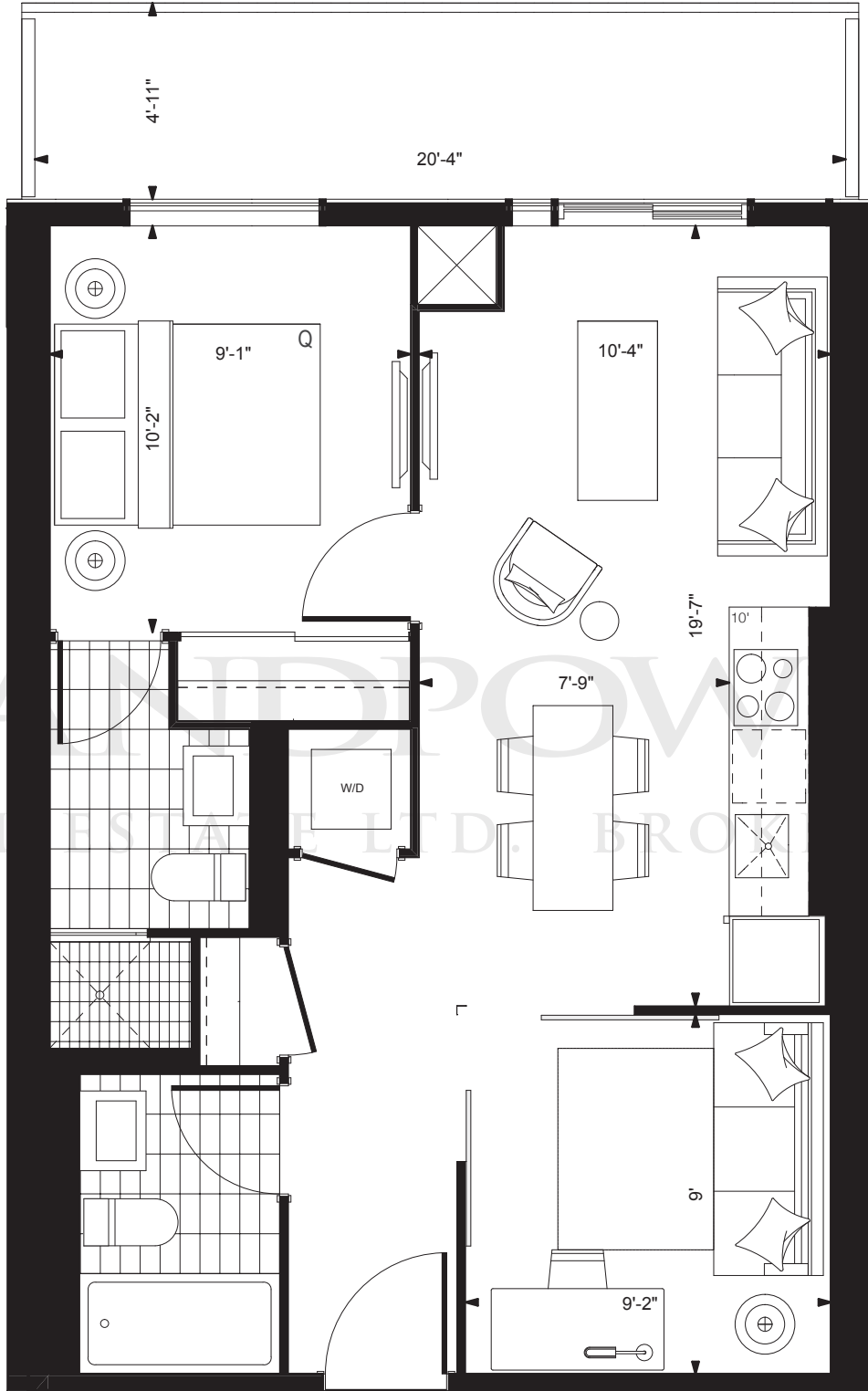


# MILLWOOD

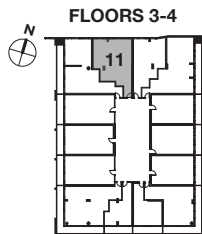
ONE BEDROOM + DEN / 633 SQ. FT.  
TERRACE / 102 SQ. FT.  
TOTAL LIVING SPACE / 735 SQ. FT.



Prices and specifications subject to change without notice, E. & O.E. The dimensions shown on this plan are approximate only. Actual useable floor space within the unit may vary from any stated floor areas or dimensions on this plan. For more information on the method used for calculating the floor area of any unit reference should be made to builder bulletin no.22 Published by tarion. The size, location and/or configuration of the windows and spandrel glass shown may be changed, varied or mirrored.

# ROSELAWN

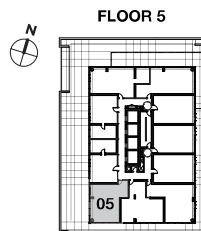
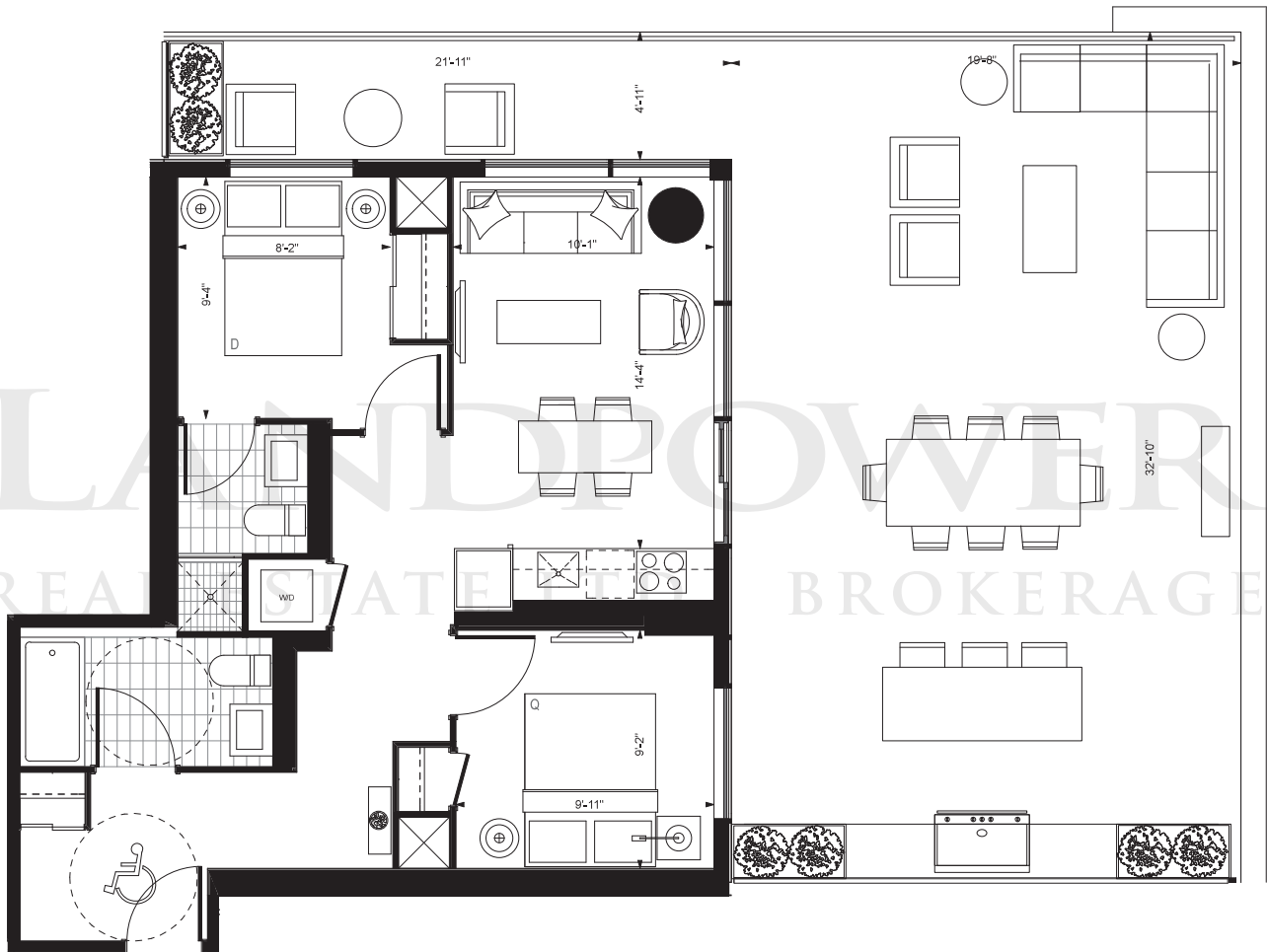
TWO BEDROOM / 865 SQ. FT.



Prices and specifications subject to change without notice. E. & O.E. The dimensions shown on this plan are approximate only. Actual useable floor space within the unit may vary from any stated floor areas or dimensions on this plan. For more information on the method used for calculating the floor area of any unit reference should be made to builder bulletin no.22 Published by tarion. The size, location and/or configuration of the windows and spandrel glass shown may be changed, varied or mirrored.

# HOLLY(BF)

TWO BEDROOM / 689 SQ. FT.  
TERRACE / 752 SQ. FT.  
TOTAL LIVING SPACE / 1441 SQ. FT.



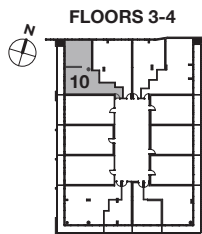
Prices and specifications subject to change without notice, E. & O.E. The dimensions shown on this plan are approximate only. Actual useable floor space within the unit may vary from any stated floor areas or dimensions on this plan. For more information on the method used for calculating the floor area of any unit reference should be made to builder bulletin no.22 Published by tarion. The size, location and/or configuration of the windows and spandrel glass shown may be changed, varied or mirrored.

# YONGE(BF)

THREE BEDROOM / 987 SQ. FT.  
BALCONY / 164 SQ. FT.  
TOTAL LIVING SPACE / 1151 SQ. FT.



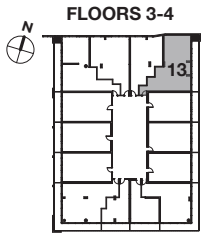
AT EPLACE



Prices and specifications subject to change without notice. E. & O.E. The dimensions shown on this plan are approximate only. Actual useable floor space within the unit may vary from any stated floor areas or dimensions on this plan. For more information on the method used for calculating the floor area of any unit reference should be made to builder bulletin no.22 Published by tarion. The size, location and/or configuration of the windows and spandrel glass shown may be changed, varied or mirrored.

# ROEHAMPTON(BF)

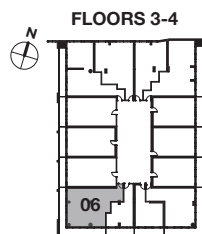
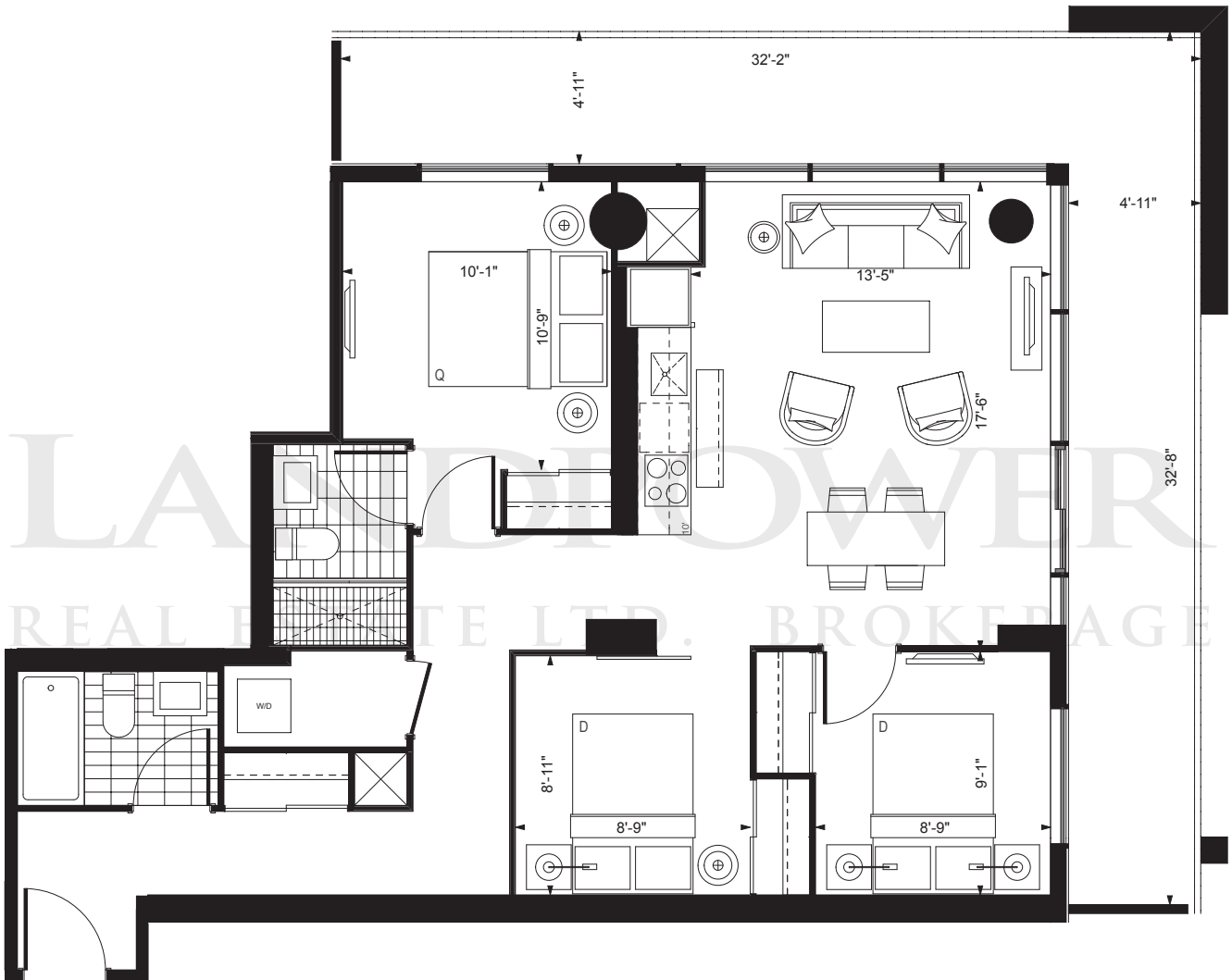
THREE BEDROOM / 998 SQ. FT.  
BALCONY / 170 SQ. FT.  
TOTAL LIVING SPACE / 1168 SQ. FT.



Prices and specifications subject to change without notice. E. & O.E. The dimensions shown on this plan are approximate only. Actual useable floor space within the unit may vary from any stated floor areas or dimensions on this plan. For more information on the method used for calculating the floor area of any unit reference should be made to builder bulletin no.22 Published by tarion. The size, location and/or configuration of the windows and spandrel glass shown may be changed, varied or mirrored.

# EGLINTON

THREE BEDROOM / 923 SQ. FT.  
BALCONY / 298 SQ. FT.  
TOTAL LIVING SPACE / 1221 SQ. FT.



Prices and specifications subject to change without notice. E. & O.E. The dimensions shown on this plan are approximate only. Actual useable floor space within the unit may vary from any stated floor areas or dimensions on this plan. For more information on the method used for calculating the floor area of any unit reference should be made to builder bulletin no.22 Published by tarion. The size, location and/or configuration of the windows and spandrel glass shown may be changed, varied or mirrored.