



E D G E W A T E R  
at the Galleria

茵湖居

## PRICE LIST

Suite	Ground Floor	Floors 2 - 3	Typical Floor 5-15
Suite 1	\$131,900	\$143,900	\$137,900
Suite 2	\$199,300	\$207,900	\$201,000
Suite 3	\$175,900	\$157,900	\$151,900
Suite 5	\$119,900	\$163,900	\$157,900
Suite 6	\$175,900	\$132,900	\$126,900
Suite 7	\$190,900	\$187,900	\$181,900
Suite 8		\$127,900	\$121,900
Suite 9		\$197,900	\$191,900

### CONDOMINIUM FEATURES

Park Setting • Paris Kitchen cabinets • Marble or Slate flooring in foyer  
High powered kitchen exhaust fan duct to outside • Party room  
Exercise room • Men and Women change rooms with showers  
Sauna • Whirlpool

1 Underground Parking space and 1 locker included  
14 Surface Parking spaces available for \$5,000 per unit

Floor premiums: \$1,000 per floor except floors 6 to 7 - \$2,000  
4 Penthouse Units: Please ask sales agent for prices

Maintenance Fees: 29.7 cents per square foot (Utilities included)  
Taxes estimated at 1% of the purchase price per annum  
Occupancy scheduled for March 1999

Deposit Structure : 5% upon signing • 5% in 60 days • 5% in 90 days

### SALES OFFICE HOURS

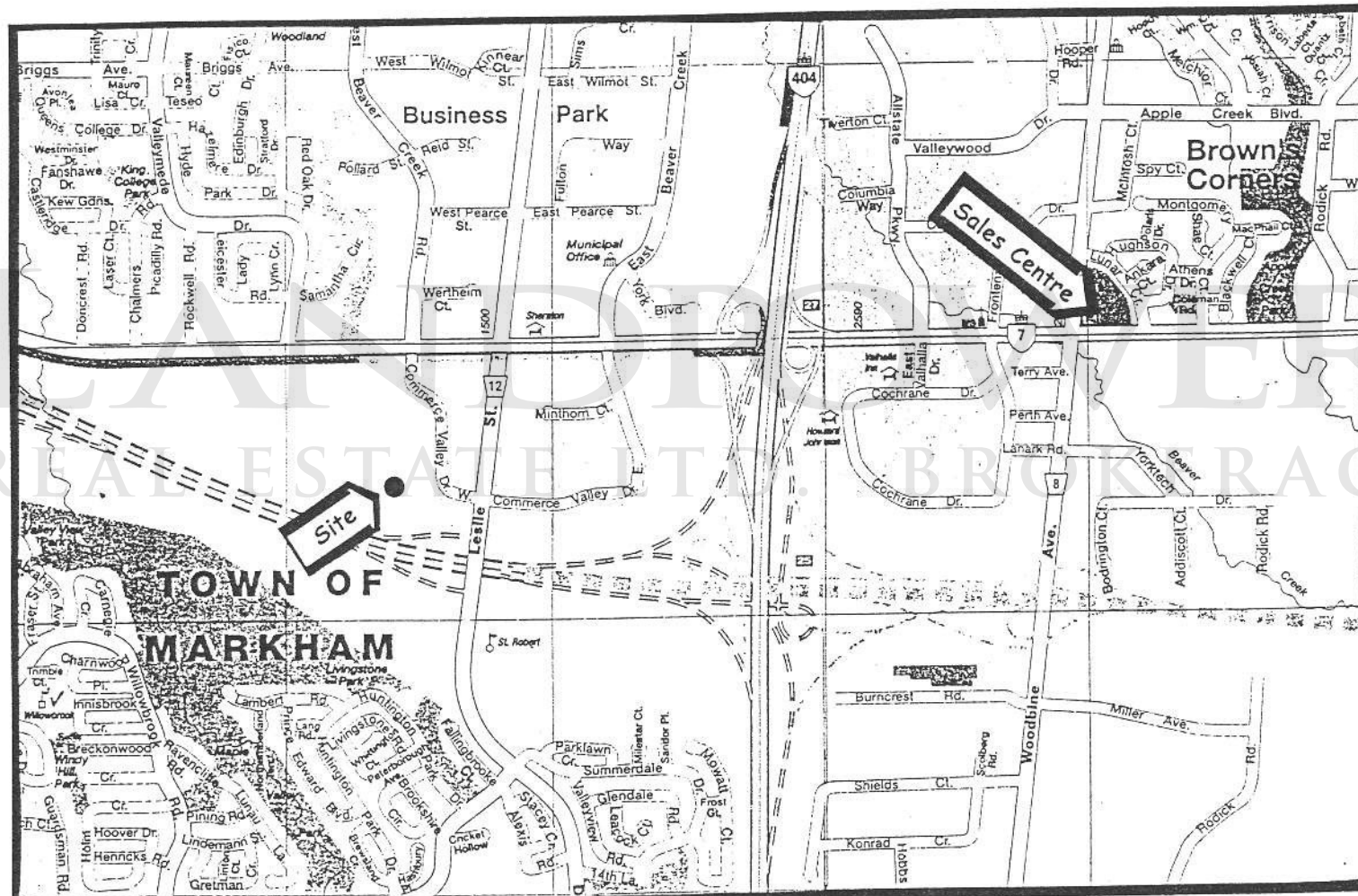
Monday to Friday 12:00 - 8:00pm, Saturday and Sunday 11:00 - 6:00pm  
Telephone: 905-947-0688 • Toll Free Number: 1-888-388-1881 • Fax: 905-947-0680



INTRACORP

# LOCATION MAP

## EDGEWATER AT THE GALLERIA



## QUALITY APPOINTMENTS

### Building Features

- Elegant circular covered entrance for easy access and weather protection.
- Architecturally designed exterior with a combination of classic taupe precast/brick and aluminum.
- Sumptuous entrance lobby, elegantly detailed with natural wood detail and marble flooring.
- Two well appointed high speed passenger elevators.
- One underground parking space per suite included
- Convenient surface visitor parking included
- One Storage locker in underground level per suite.
- Edgewater Terrace including gazebo and BBQ are overlooking parkland.
- Serene, landscaped grounds with walkways, floral gardens and benches.
- Convenient ground floor mailroom.

### Kitchen Features

- Quality appliances include Fridge/Stove/Dishwasher.
- Selection of imported 12 x 12 ceramic tile flooring.
- Open concept kitchen with breakfast bar or serving pass-through as per plan.
- Upgraded quality Paris kitchen cabinet.
- High-capacity, variable speed, kitchen hood fan exhausted to exterior.
- Ceramic tile backsplash available in a variety of styles.
- Stainless steel sink with single lever faucet.
- Selection of laminate counter tops to complement kitchen cabinets.

### Bathroom Features

- Upgrade quality Paris vanity cabinets.
- Imported 12 x 12 ceramic tile flooring in main bathroom.
- Selection of laminate countertops to complement cabinets.
- Sumptuous 12 x 12 marble tile flooring in ensuite.
- Full width vanity mirror in ensuite and main bathroom.
- Hollywood strip lighting over vanity mirror.
- Full height ceramic tile tub surround as per plan.
- White bathroom fixtures.
- Separate ceramic shower with marble threshold.
- Pressure balanced mixing valve for tub/shower controls.
- Exhaust fan vented to exterior in all bathrooms.

### General Features

- Individual climate control of centralized heating and air conditioning.
- Choice of quality 50 oz broadloom in living room, dining room, bedrooms and hallways with ½ inch foam underpad.
- All operating windows to be provided with screens.
- Textured ceilings with smooth border throughout except bathrooms, kitchen and laundry.

### Laundry Area

- Stack washer and dryer in convenient and contained closet/storage area.

### Electrical Features

- Service panel with circuit breakers and copper wiring throughout.
- Switch controlled receptacles in living/dining area.
- Three pre-wired for cable TV outlets as per plan.
- Ceiling light fixtures in foyer and all bedrooms.
- Electronic smoke detectors.

### Security Features

- Card access to and from underground parking and elevator lobby.
- Interphone system at main entrance complete with insuite monitoring facility.
- Heated ramp to underground for easy winter access.
- Garage is painted and lit with fluorescent lighting for high visibility.
- Parabolic mirrors in garage for easy traffic flow and better visibility.
- Alarm station in underground parking.

### Suite Features and Finishes

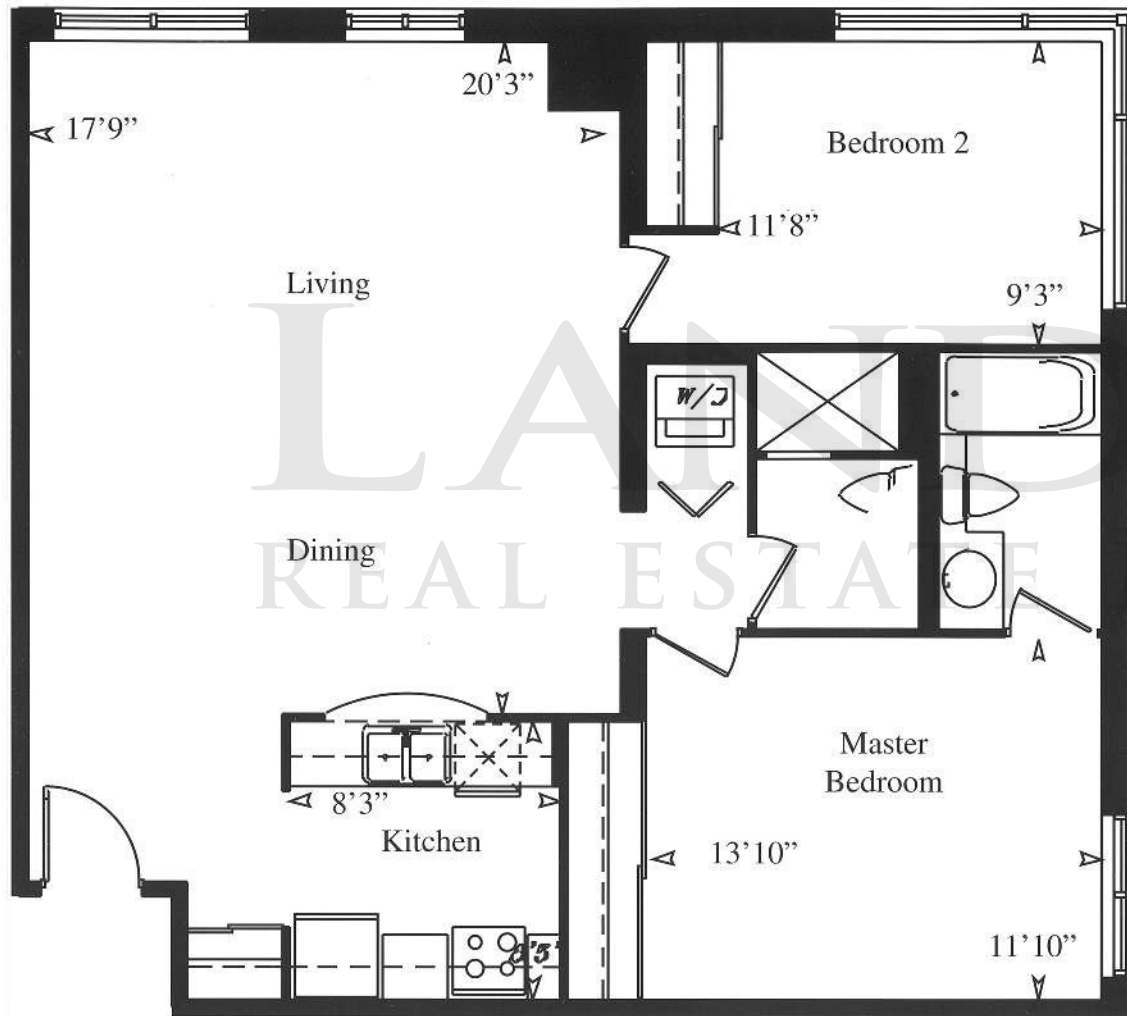
- Imported polished marble flooring in entrance foyer.
- Colonial style paneled 4" base band trim.
- Distinctive classique style paneled interior doors complete with sumptuous, hand polished brass-finish hardware.
- Energy efficient thermal, double-glazed windows throughout suite, as per floor plans.
- Attractive, designer selected white window blinds grace all windows throughout suite, as per floor plan.
- Efficient, vinyl coated wire shelving fully installed in all closets, as per floor plan.

### Recreation Facilities

- Soothing whirlpool.
- Spacious, elegantly appointed "his" and "hers": change rooms.
- Fully equipped, state-of-the-art exercise room.
- Multi-purpose room ideal for parties, private dinners and business meetings, complete with full kitchen facilities.

# Suite 9

Typical Floor 1014 sq.ft.



Ground Floor 1014 sq.ft.  
(Suite 7-Unit 6)

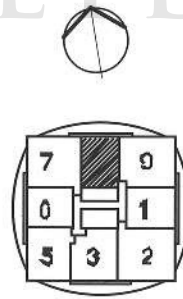
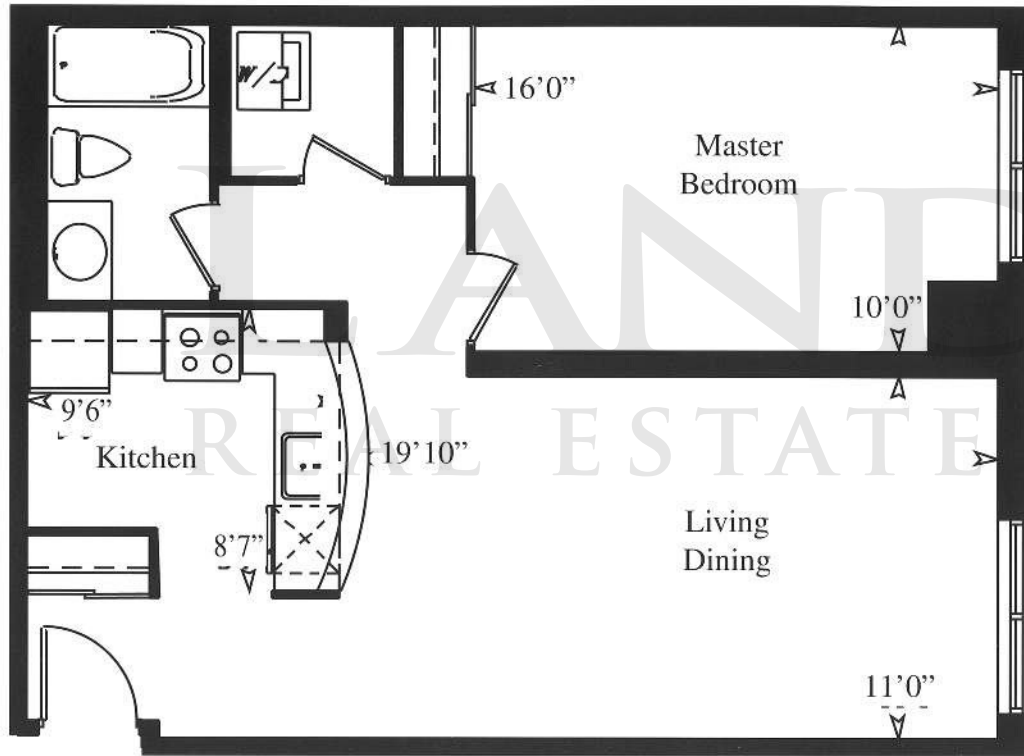


Floor 2-3 1046 sq.ft.  
(Suite 1-Unit 1)

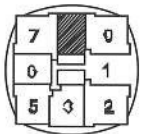
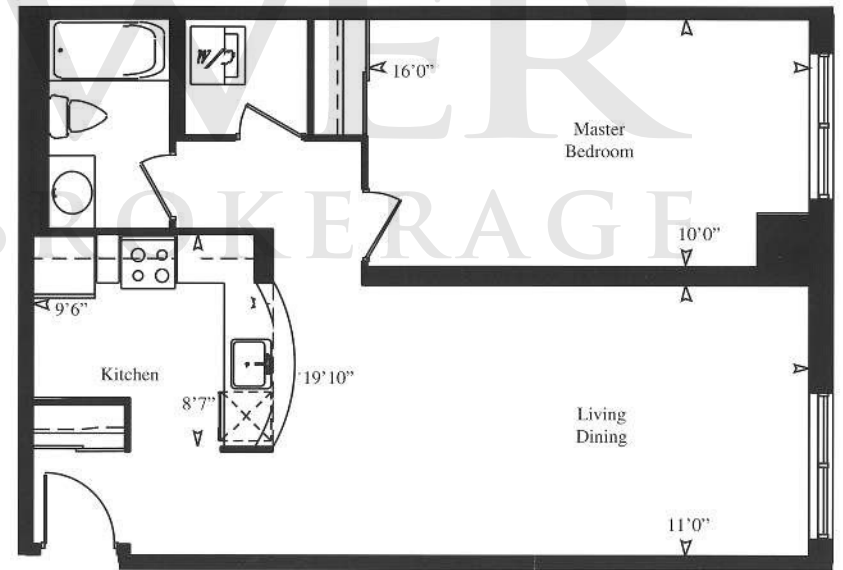


# Suite 8

Typical Floor 696 sq.ft.

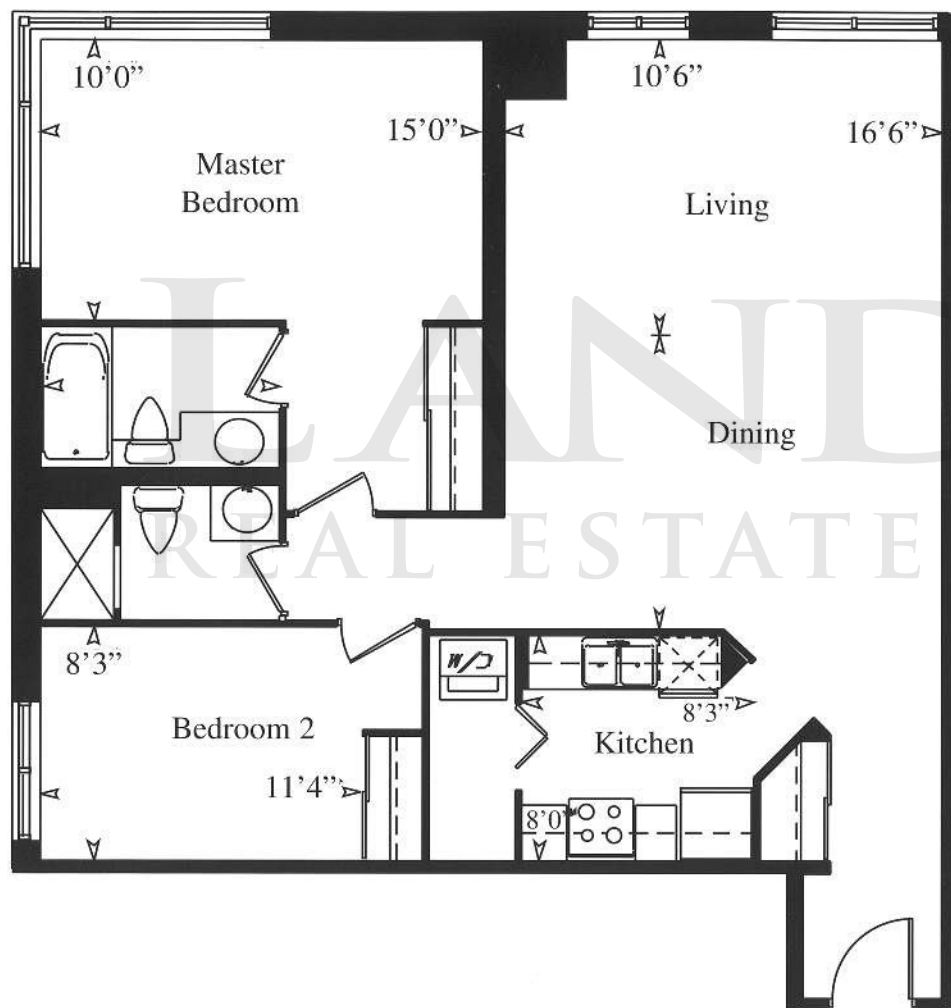


Floor 2-3 740 sq.ft.  
(Suite 8-Unit 7)



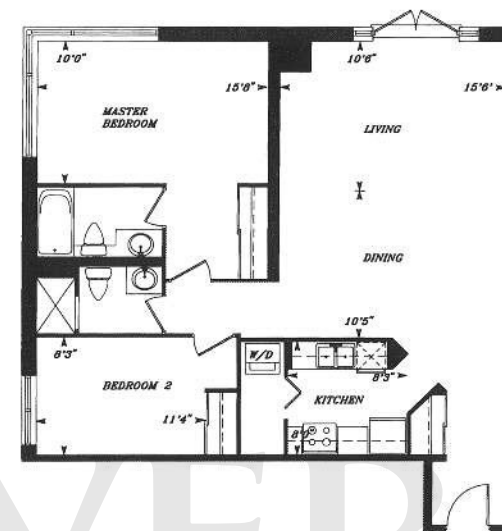
# Suite 7

Typical Floor 1037 sq.ft.



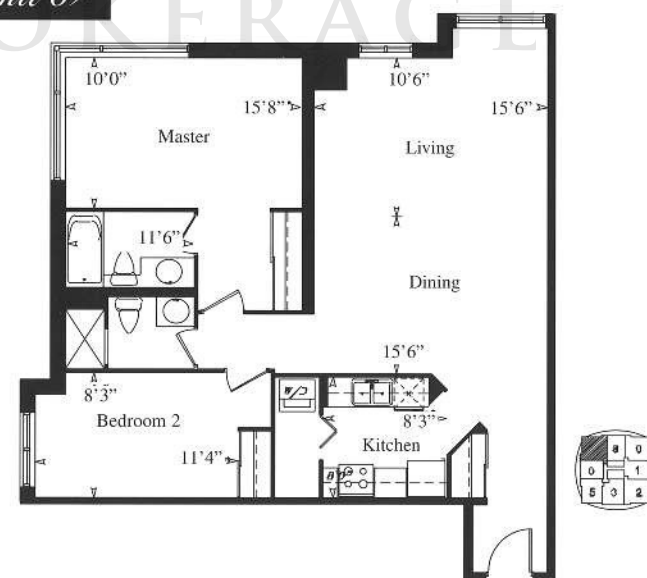
Ground Floor 1014 sq.ft.

(Suite 6-Unit 5)



Floor 2-3 1068 sq.ft.

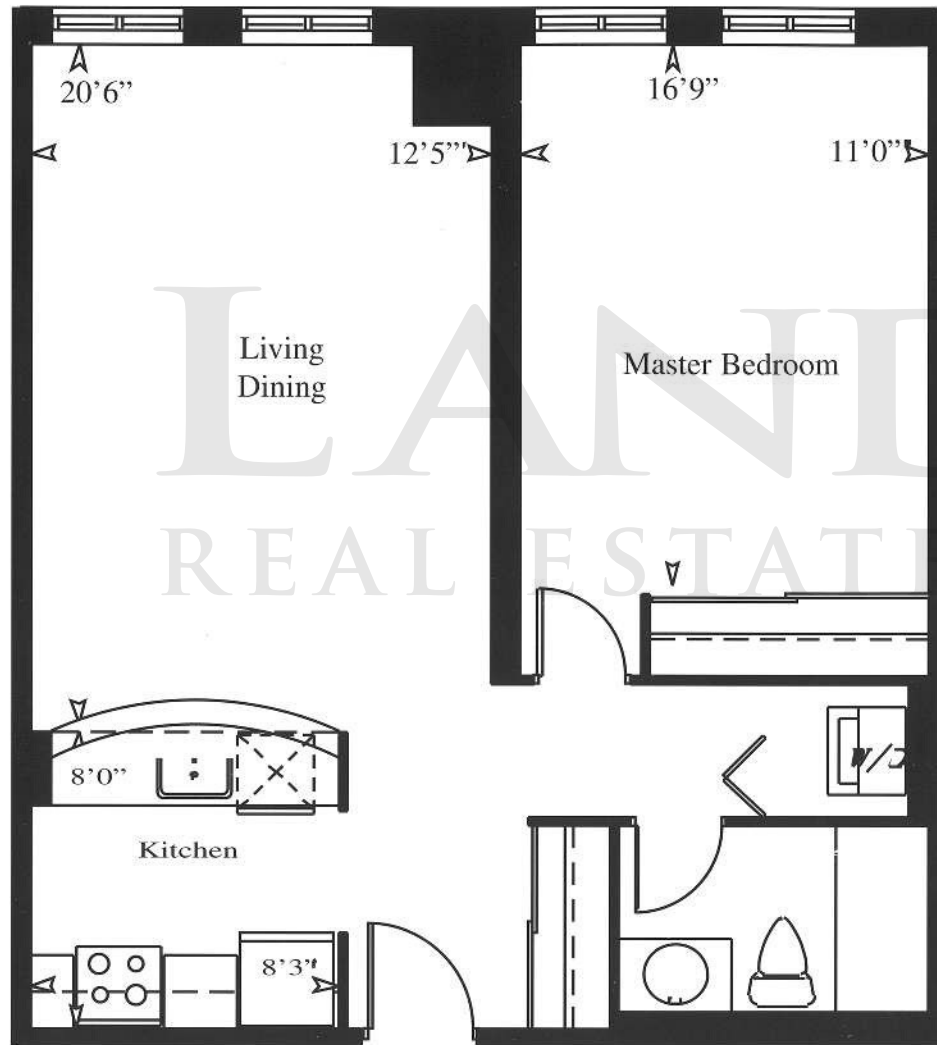
(Suite 7-Unit 6)





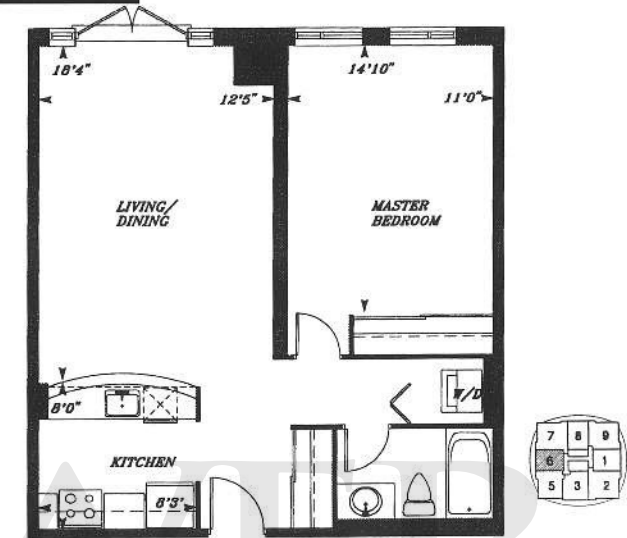
# Suite 6 Unit 5

Typical Floor 693 sq.ft.



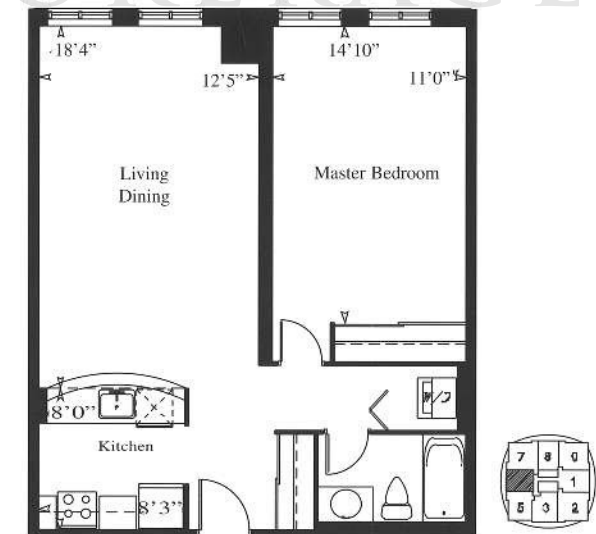
Ground Floor 1037 sq.ft.

(Suite 5-Unit 4)



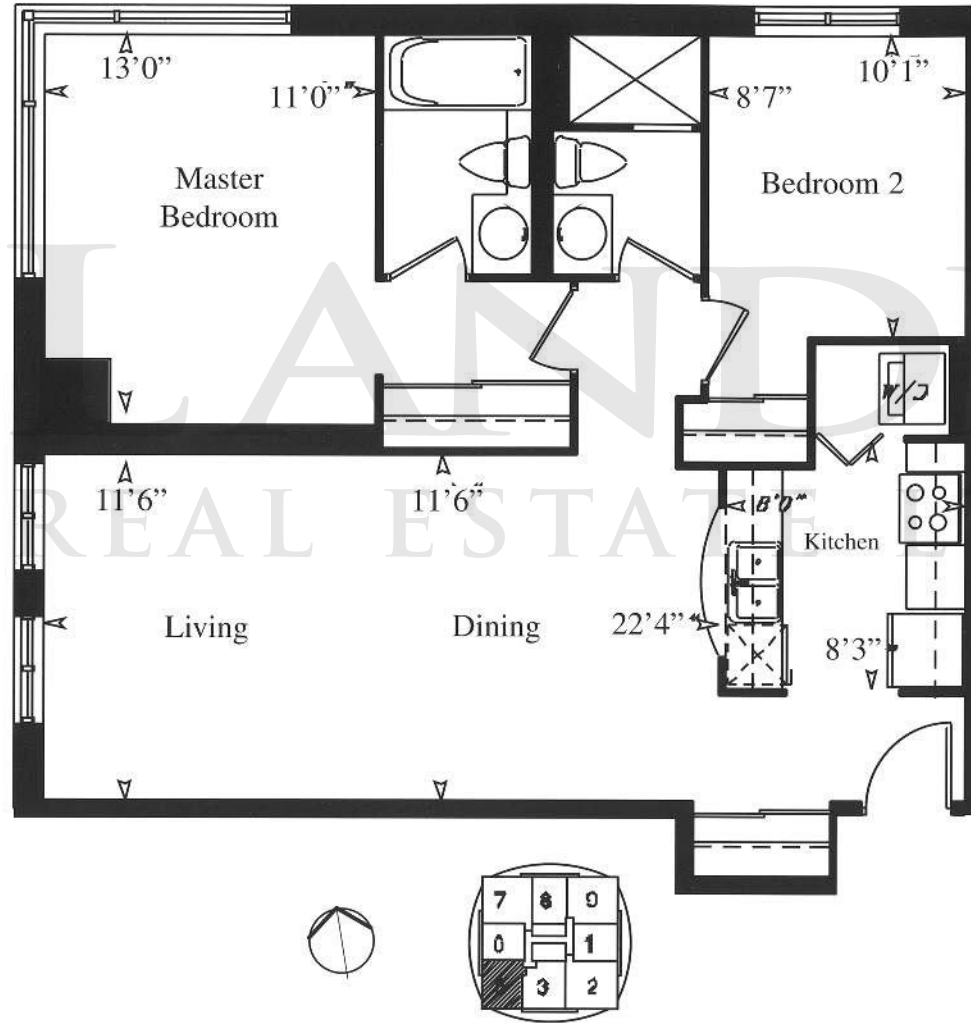
Floor 2-3 742 sq.ft.

(Suite 6-Unit 5)



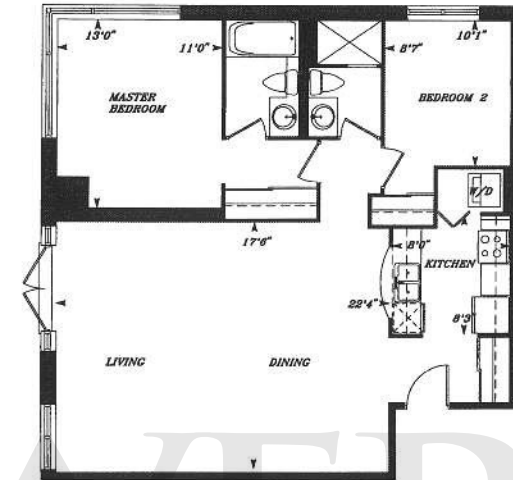
# Suite 5

Typical Floor 868 sq.ft.



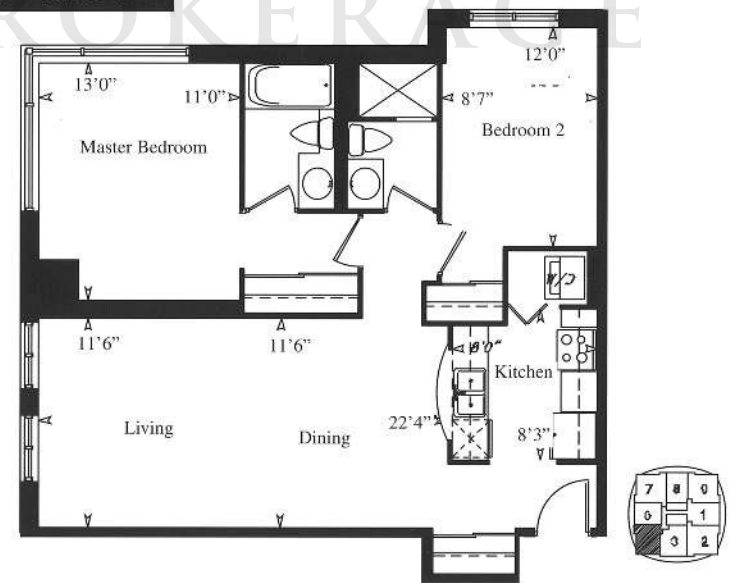
Ground Floor 693 sq.ft.

(Suite 3-Unit 3)



Floor 2-3 887 sq.ft.

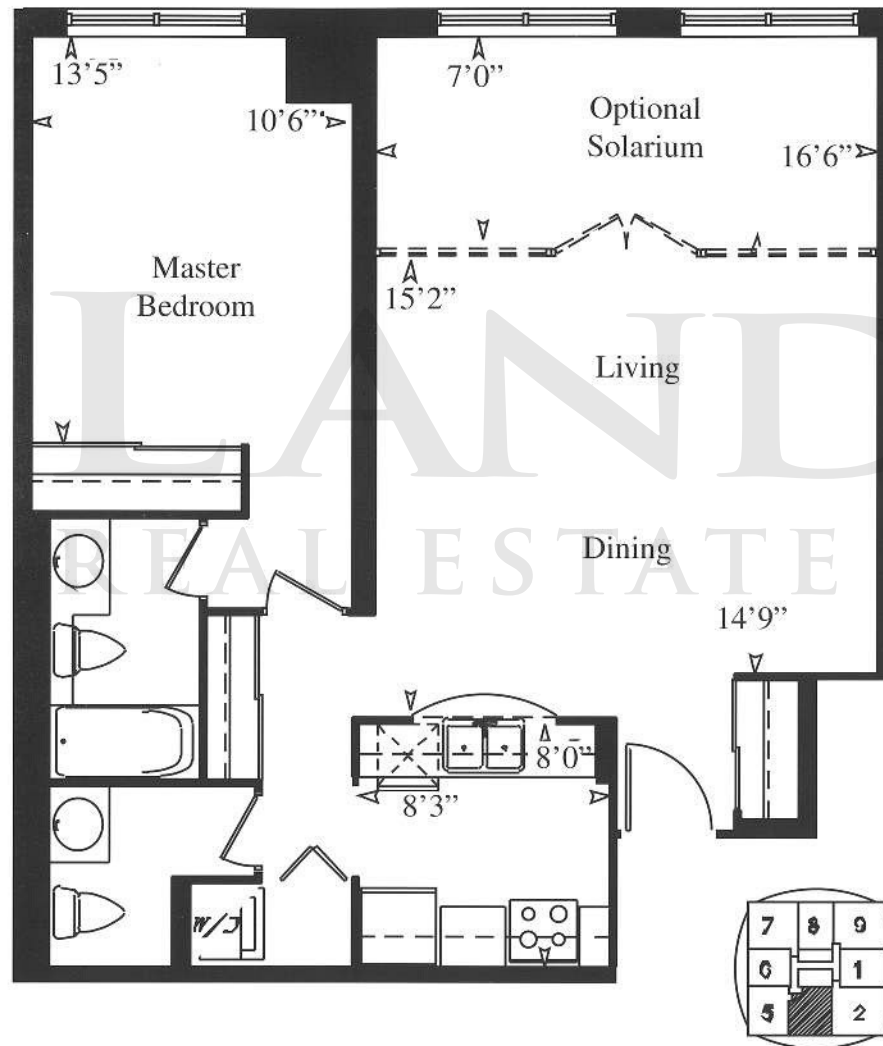
(Suite 5-Unit 4)





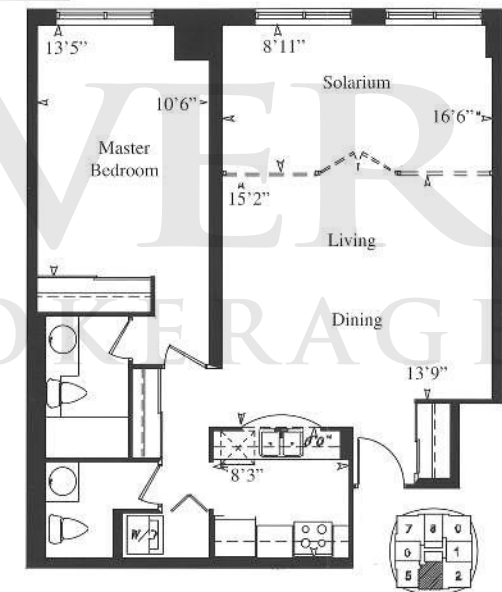
# Suite 3

Typical Floor 847 sq.ft.



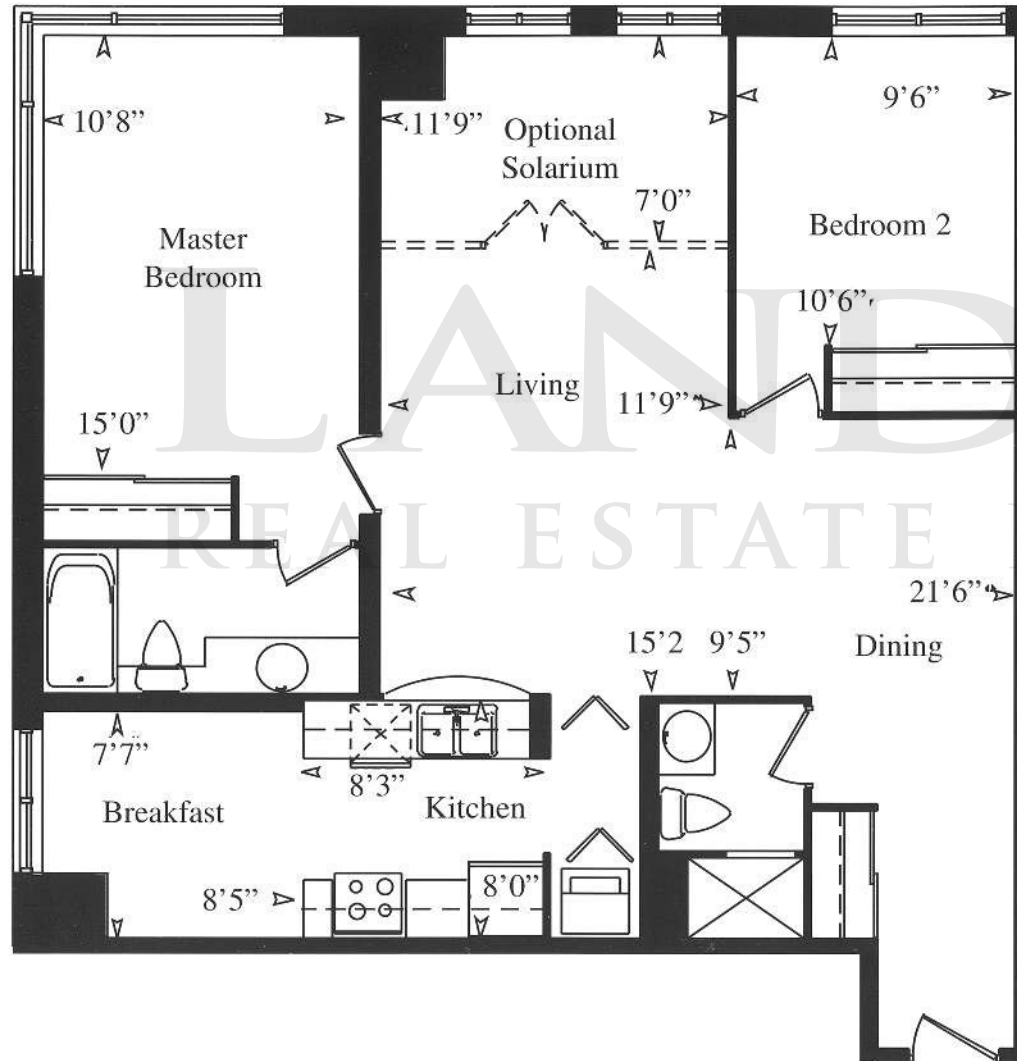
Floor 2-3 903 sq.ft.

(Suite 3-Unit 3)



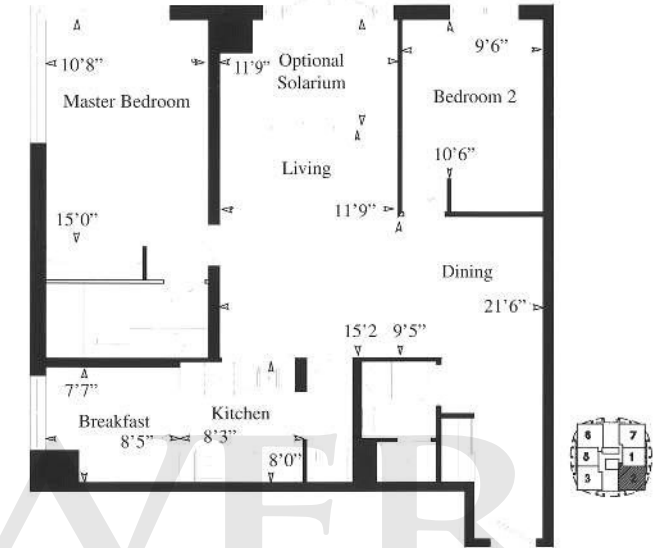
# Suite 2

Typical Floor 1116 sq.ft.



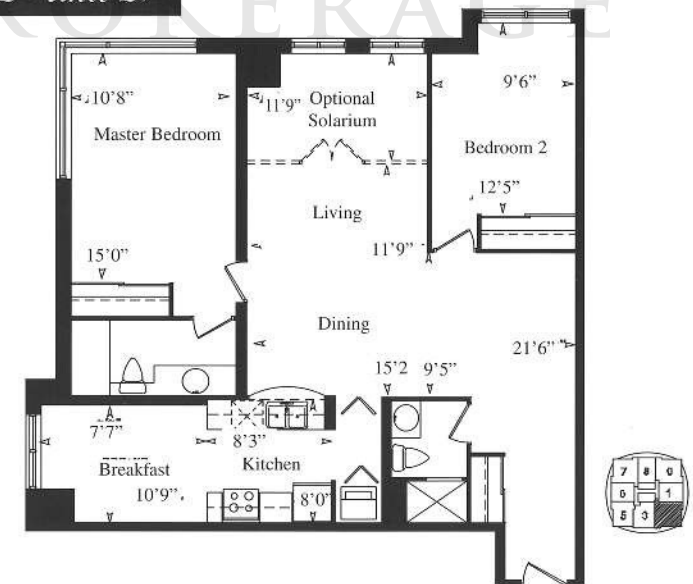
Ground Floor 1116 sq.ft.

(Suite 2-Unit 2)



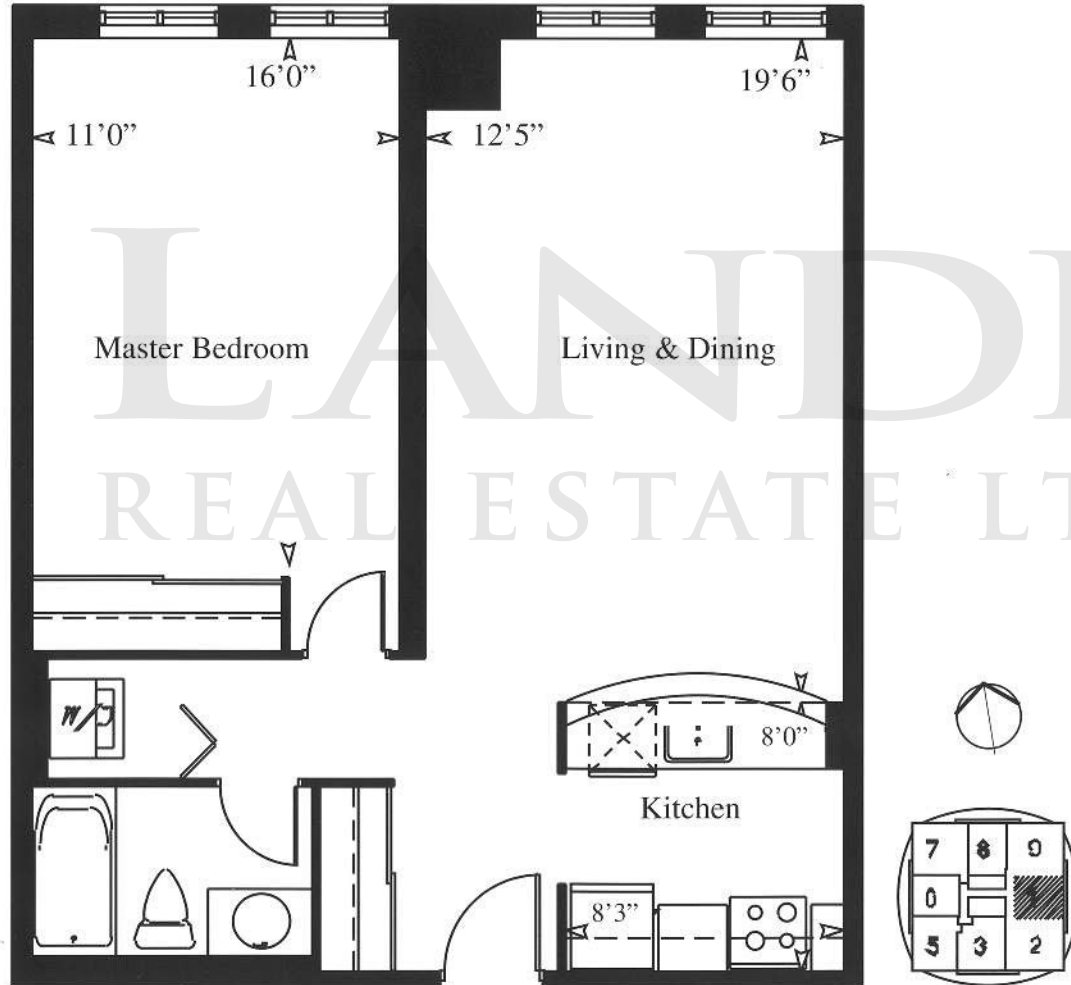
Floor 2-3 1150 sq.ft.

(Suite 2-Unit 2)



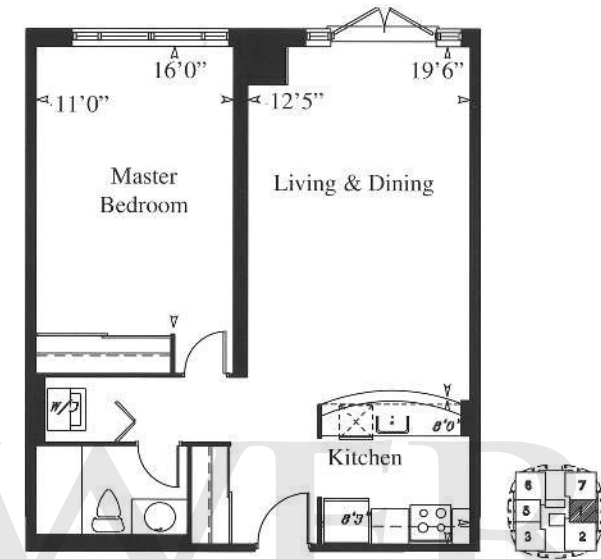
# Suite 1

Typical Floor 724 sq.ft.



Ground Floor 724 sq.ft.

(Suite 1-Unit 1)



Floor 2-3 773 sq.ft.

(Suite 1-Unit 1)

