

ELIOT

coming to Yonge and Sheppard





0000













# EIGHTY8

MODEL	INDOOR LIVING	OUTDOOR LIVING	VIEW	FLOOR FROM	PRICED FROM
<b>STUDIO</b>					
Lily	375 sq.ft.	41 sq.ft.	W	4 <sup>th</sup>	\$ 228,880
Lilac t1	395 sq.ft.	195 sq.ft.	W	4 <sup>th</sup>	\$ 234,880
Mandarin	403 sq.ft.	46 sq.ft.	W	2 <sup>nd</sup>	\$223,880
Marigold	477 sq.ft.	65 sq.ft.	W	2 <sup>nd</sup>	\$ 267,880
Thyme	457 sq.ft.	292 sq.ft.	W	2 <sup>nd</sup>	\$ 262,380
Cedar	452 sq.ft.	264 sq.ft.	E	2 <sup>nd</sup>	\$ 263,880
<b>1 BEDROOM</b>					
Redwood	527 sq.ft.	51 sq.ft.	S	9 <sup>th</sup>	\$286,880
Ginkgo	536 sq.ft.	49 sq.ft.	E	5 <sup>th</sup>	\$311,380
Burnet	595 sq.ft.	51 sq.ft.	S	5 <sup>th</sup>	\$316,880
<b>1 BEDROOM + DEN</b>					
Lavender	560 sq.ft.	53 sq.ft.	W	2 <sup>nd</sup>	\$ 314,880
Plum	608 sq.ft.	48 sq.ft.	W	5 <sup>th</sup>	\$335,880
Sage	616 sq.ft.	332 sq.ft.	E	2 <sup>nd</sup>	\$355,880
Peony	655 sq.ft.	56 sq.ft.	N	5 <sup>th</sup>	\$362,380
Jasmine	665 sq.ft.	48 sq.ft.	E	4 <sup>th</sup>	\$382,880
Fig	668 sq.ft.	67 sq.ft.	E	4 <sup>th</sup>	\$382,880
Clover	668 sq.ft.	196 sq.ft.	E	2 <sup>nd</sup>	\$385,880
Camomile	686 sq.ft.	169 sq.ft.	W	3 <sup>rd</sup>	\$385,880
Willow	686 sq.ft.	67 sq.ft.	NE	4 <sup>th</sup>	\$391,880
Pine	698 sq.ft.	102 sq. ft.	S	15 <sup>th</sup>	\$420,880
<b>2 BEDROOM</b>					
Cypress	700 sq.ft.	52 sq.ft.	SW	5 <sup>th</sup>	\$393,880
Bamboo	745 sq.ft.	48 sq.ft.	NW	5 <sup>th</sup>	\$442,380
Rose	817 sq.ft.	54 sq.ft.	SE	16 <sup>th</sup>	\$469,880
Cherry	823 sq.ft.	50 sq.ft.	NE	5 <sup>th</sup>	\$475,880
Chicory	750 sq.ft.	338 sq.ft.	NE	2 <sup>nd</sup>	\$433,880
<b>2 BEDROOM + DEN</b>					
Banyan	968 sq.ft.	53 sq.ft.	SW	16 <sup>th</sup>	\$556,880
<b>TOWNHOME</b>					
Sycamore	1485 sq.ft.	128 + 43 sq.ft.	N&S or E&W	Ground	\$798,900
Chestnut	1620 sq.ft.	128 + 45 sq.ft.	N&S or E&W	Ground	\$845,800

See Sales Representative for Patio or Alternate floor plans. See Sales Representative for Premium Suite Details.

#### **PRICING:**

Floor increments vary depending on views and locations.  
See Sales Representatives for details. H.S.T. included in all prices.

Parking starting at \$35,000 + HST.  
One parking space include with Townhomes.

#### **LOCKER:**

Available at \$3,500 + HST per Locker.

#### **MAINTENANCE FEES:**

\$0.54 per square foot per month.

#### **Includes:**

Building Insurance, Reserve Fund Contribution,  
Upkeep of Common Areas, Heating/Air Conditioning.

#### **Excludes:**

Suite electricity and water (individually metered), parking, locker, cable,  
Internet plus applicable taxes.

#### **88 SHEPPARD**

Thirty-five storey's  
Number of Suites: 375

#### **DEPOSIT STRUCTURE:**

\$3,500 on signing  
5% less \$3,500 in 30 Days  
5% in 90 Days  
5% in 180 Days  
5% in 300 Days  
5% on Occupancy

#### **PROPERTY TAXES:**

Estimated at 1.25% if the Purchase Price per annum.

#### **TENTATIVE OCCUPANCY:**

January, 2015.

Prices, sizes and specifications are subject to change without notice. All dimensions are subject to normal construction variances.  
Some features may vary by suite Design. E. & O. E. **Preview Event.**



CONTACT US: 416.915.3805 [minto88@minto.com](mailto:minto88@minto.com) [www.minto.com](http://www.minto.com)





# EIGHTY8

www.InsiderCondos.com/88-Sheppard-Condos | 416.880.4039

SUITE	INDOOR LIVING	OUTDOOR LIVING	VIEW	FLOOR FROM	PRICED FROM
<b>STUDIO</b>					
Juniper	361 sq.ft.	46 sq.ft.	NW	4 <sup>th</sup>	\$228,880
Lily	375 sq.ft.	41 sq.ft.	W	4 <sup>th</sup>	\$228,880
Lilac	395 sq.ft.	135 sq.ft.	W	4 <sup>th</sup>	\$234,880
Thyme	457 sq.ft.	292 sq.ft.	W	2 <sup>nd</sup>	\$262,380
Marigold	477 sq.ft.	65 sq.ft.	W	2 <sup>nd</sup>	\$267,880
Lavender	479 sq.ft.	53 sq.ft.	W	2 <sup>nd</sup>	\$267,380
<b>1 BEDROOM</b>					
Redwood	527 sq.ft.	51 sq.ft.	S	4 <sup>th</sup>	\$287,880
Ginkgo	536 sq.ft.	40 sq.ft.	E	2 <sup>nd</sup>	\$311,880
Burnet	595 sq.ft.	51 sq.ft.	S	4 <sup>th</sup>	\$321,880
<b>1 BEDROOM + DEN</b>					
Plum	608 sq.ft.	48 sq.ft.	W	5 <sup>th</sup>	\$328,880
Peony	655 sq.ft.	222 sq.ft.	N	5 <sup>th</sup>	\$355,880
Jasmine	665 sq.ft.	48 sq.ft.	E	4 <sup>th</sup>	\$381,880
Spruce	665 sq.ft.	54 sq.ft.	SE	5 <sup>th</sup>	\$374,880
Fig	668 sq.ft.	67 sq.ft.	E	4 <sup>th</sup>	\$382,880
Willow	686 sq.ft.	67 sq.ft.	NE	4 <sup>th</sup>	\$391,880
Chamomile	685 sq.ft.	169 sq.ft.	W	4 <sup>th</sup>	\$386,880
Pine	698 sq.ft.	102 sq.ft.	S	16 <sup>th</sup>	\$414,880
<b>2 BEDROOM</b>					
Cypress	700 sq.ft.	265 sq.ft.	SW	5 <sup>th</sup>	\$386,880
Bamboo	745 sq.ft.	200 sq.ft.	NW	5 <sup>th</sup>	\$436,880
Chicory	750 sq.ft.	338 sq.ft.	NE	2 <sup>nd</sup>	\$433,880
Rose	817 sq.ft.	431 sq.ft.	SE	16 <sup>th</sup>	\$455,880
Cherry	823 sq.ft.	175 sq.ft.	NE	5 <sup>th</sup>	\$461,880
<b>2 BEDROOM + DEN</b>					
Banyan	968 sq.ft.	53 sq.ft.	SW	16 <sup>th</sup>	\$542,880
<b>TOWNHOME</b>					
Sycamore	1485 sq.ft.	171 sq.ft.	S or W	Ground	\$798,800
Chestnut	1620 sq.ft.	173 sq.ft.	S or W	Ground	\$845,800

\*See Sales Representative for Patio or Alternate floor plans. See Sales Representative for Premium Suite Details.

#### PRICING:

Floor increments vary depending on views and locations.  
See Sales Representatives for details. H.S.T. included in all prices.

Parking starting at \$35,000 + HST.  
One parking space include with Townhomes.

#### LOCKER:

Available at \$3,500 + HST per Locker.

#### MAINTENANCE FEES:

\$0.64 per square foot per month.

#### Includes:

Building Insurance, Reserve Fund Contribution,  
Upkeep of Common Areas, Heating/Air Conditioning.

#### Excludes:

Suite electricity and water (individually metered), parking, locker, cable,  
Internet plus applicable taxes.

#### 88 SHEPPARD

Thirty-five storeys  
Number of Suites: 371

#### DEPOSIT STRUCTURE:

\$3,500 on signing  
5% less \$3,500 in 30 Days  
5% in 90 Days  
5% in 180 Days  
5% in 300 Days  
5% on Occupancy

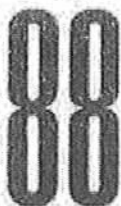
#### PROPERTY TAXES:

Estimated at 1.25% of the Purchase Price per annum.

#### TENTATIVE OCCUPANCY:

January, 2015.

Prices, sizes and specifications are subject to change without notice. All dimensions are subject to normal construction variances.  
Some features may vary by suite Design. E. & O. E. November 14, 2011.

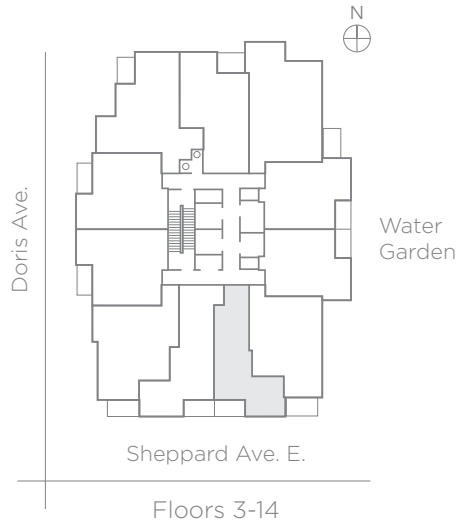


# Redwood

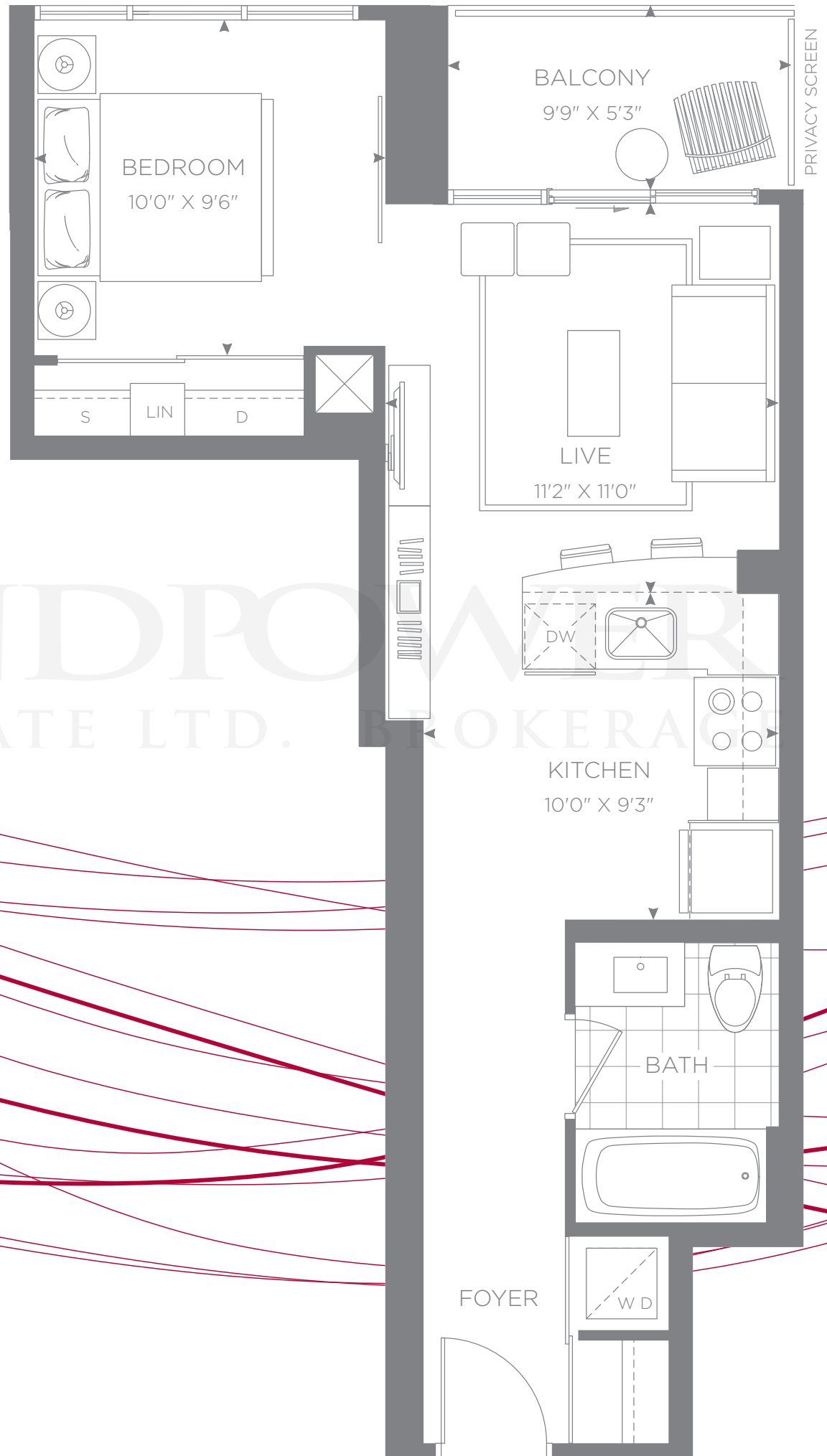
1 Bedroom

527 Square Feet

Floors 3-14  
Interior: 527 sq ft  
Balcony: 51 sq ft  
Total: 578 sq ft



Terrace condition on floors 2, 3, 4.  
See sales rep for details.



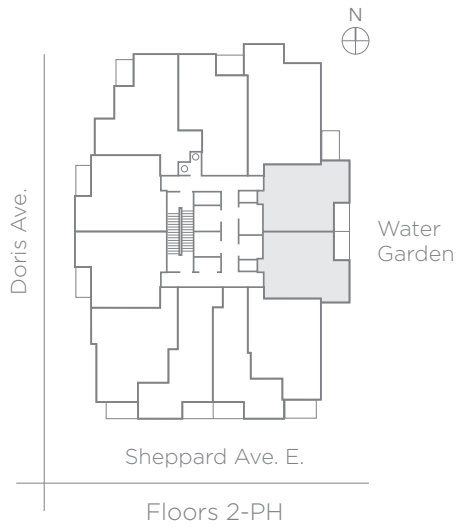
WELCOME HOME

# Ginkgo

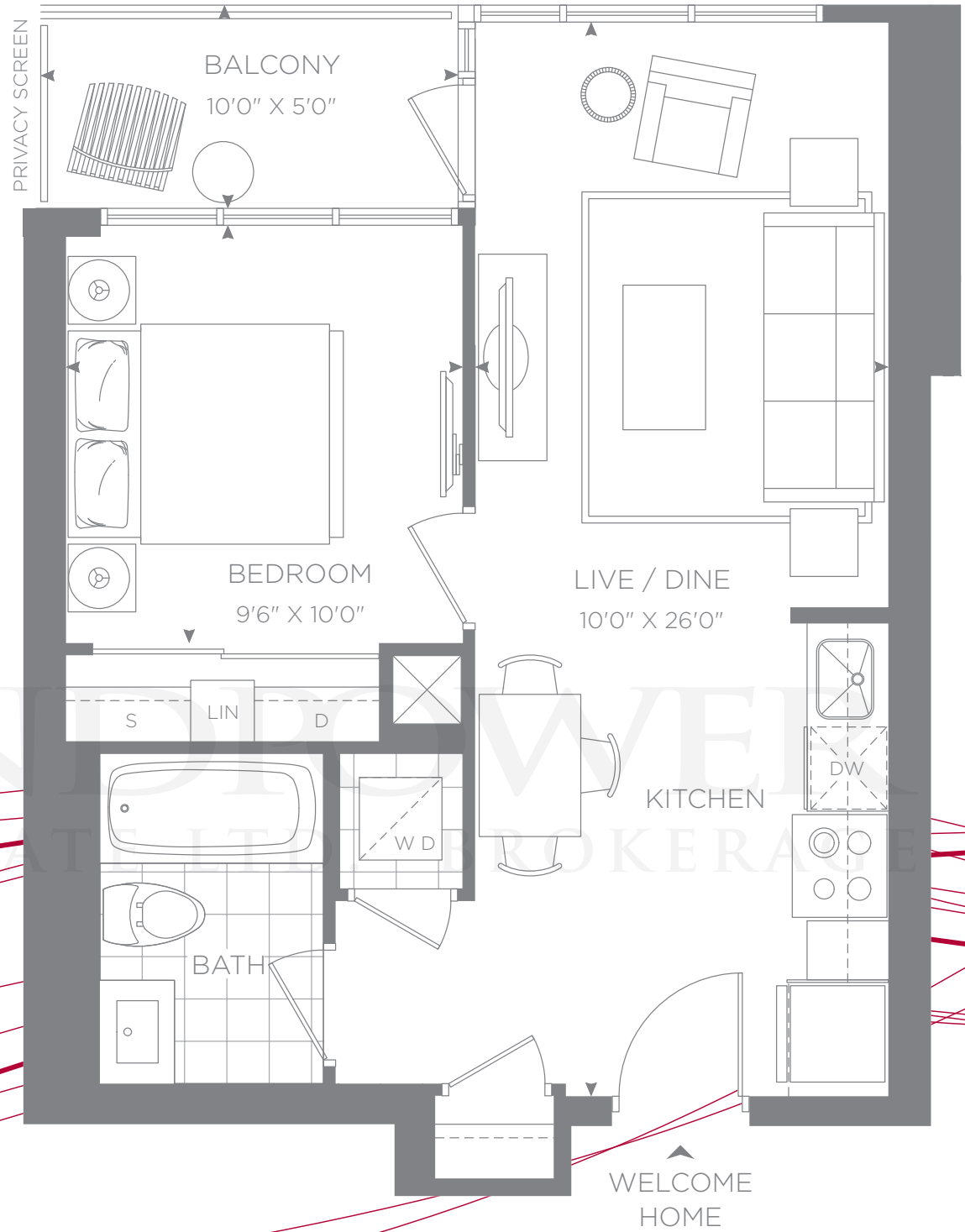
1 Bedroom

536 Square Feet

Floors 2-PH (35)  
Interior: 536 sq ft  
Balcony: 49 sq ft  
Total: 585 sq ft



Terrace condition on floor 2.  
See sales rep for details.

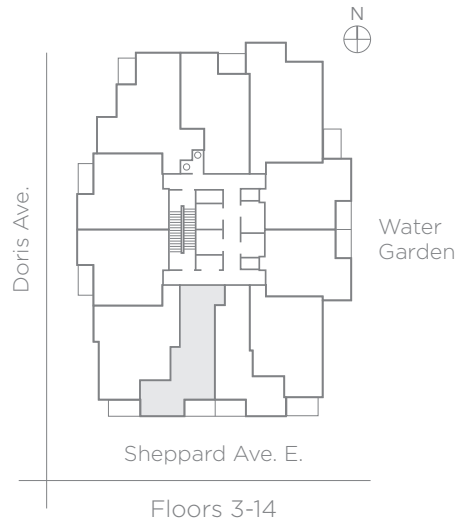


# Burnet

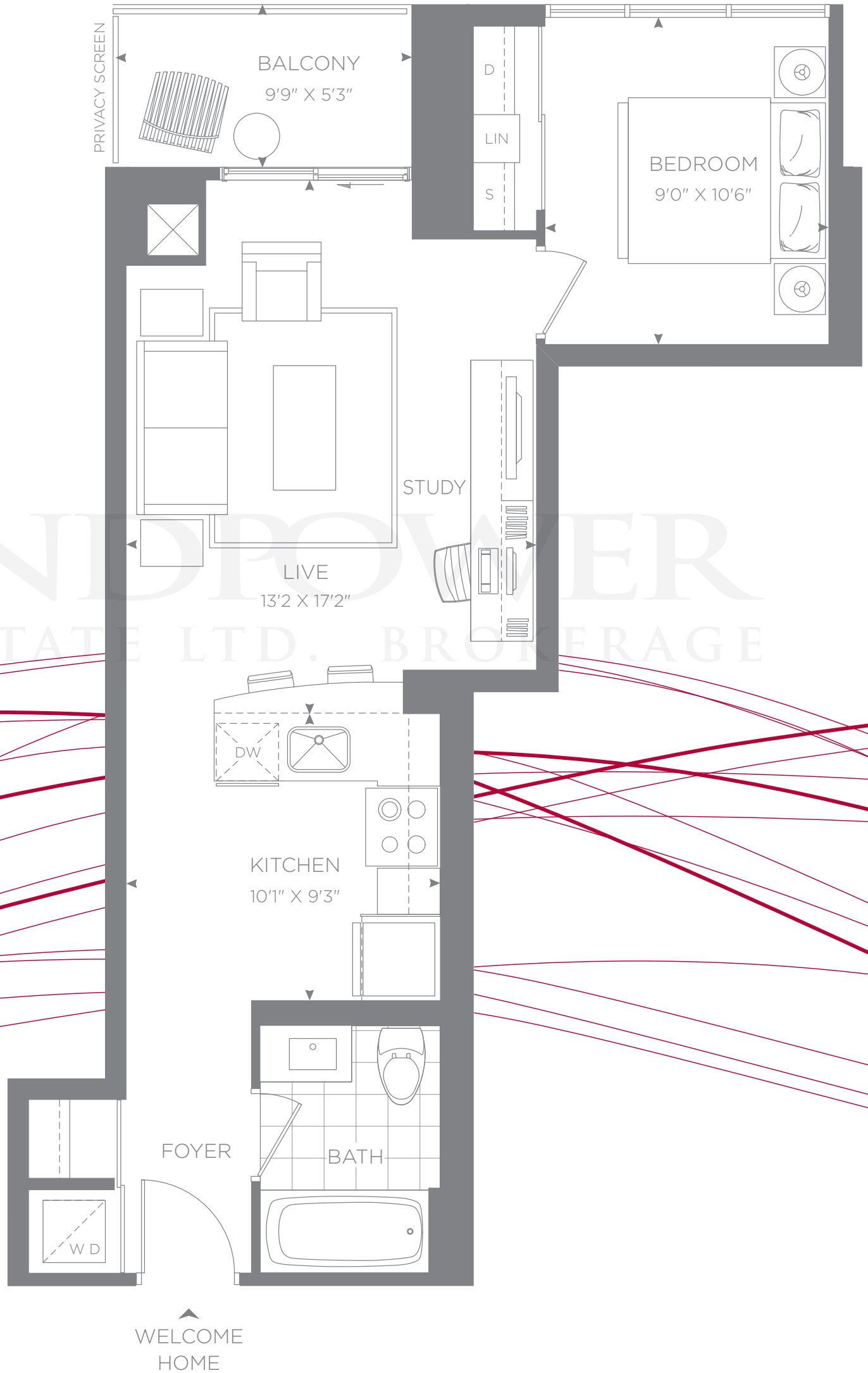
1 Bedroom + Study

595 Square Feet

Floors 3-14  
Interior: 595 sq ft  
Balcony: 51 sq ft  
Total: 646 sq ft



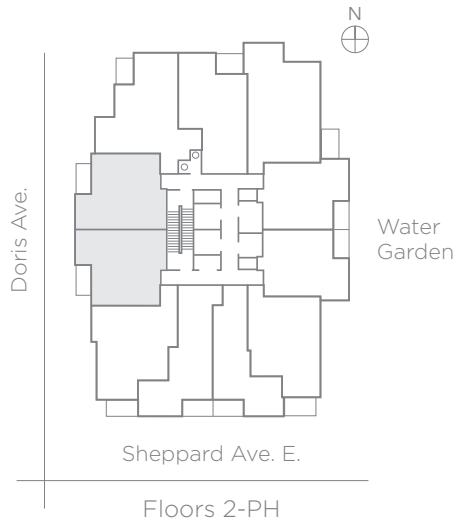
Terrace condition on floor 3.  
See sales rep for details.



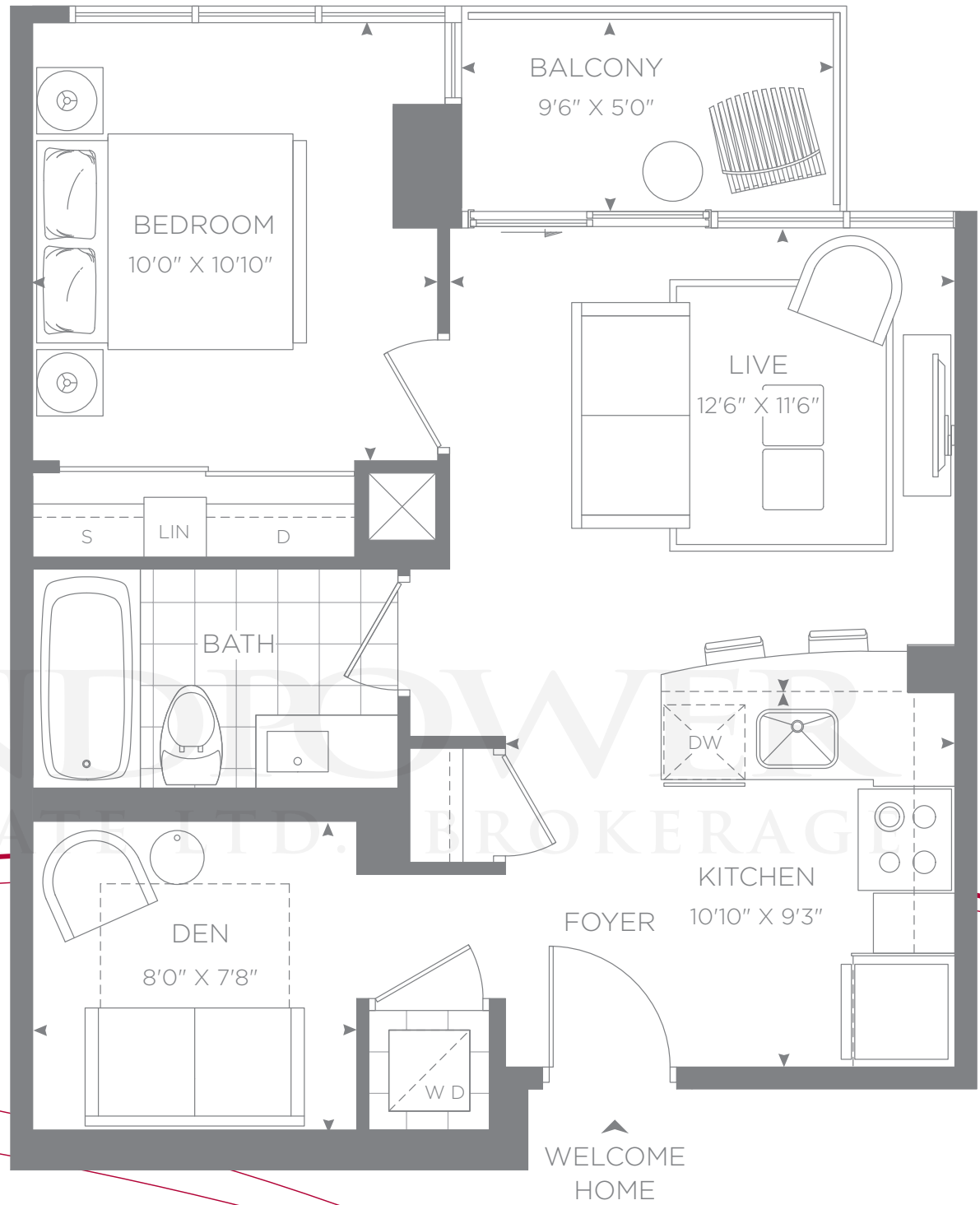
# Plum

1 Bedroom + Den  
608 Square Feet

Floors 2-PH (35)  
Interior: 608 sq ft  
Balcony: 48 sq ft  
Total: 656 sq ft



Terrace condition on floors 2, 3, 4.  
See sales rep for details.



# Peony

1 Bedroom + Den

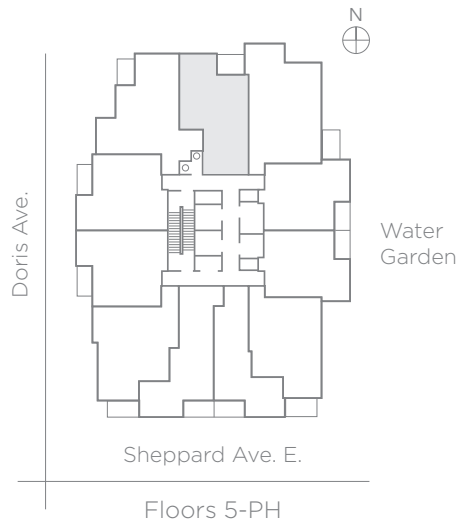
655 Square Feet

Floors 5-PH (35)

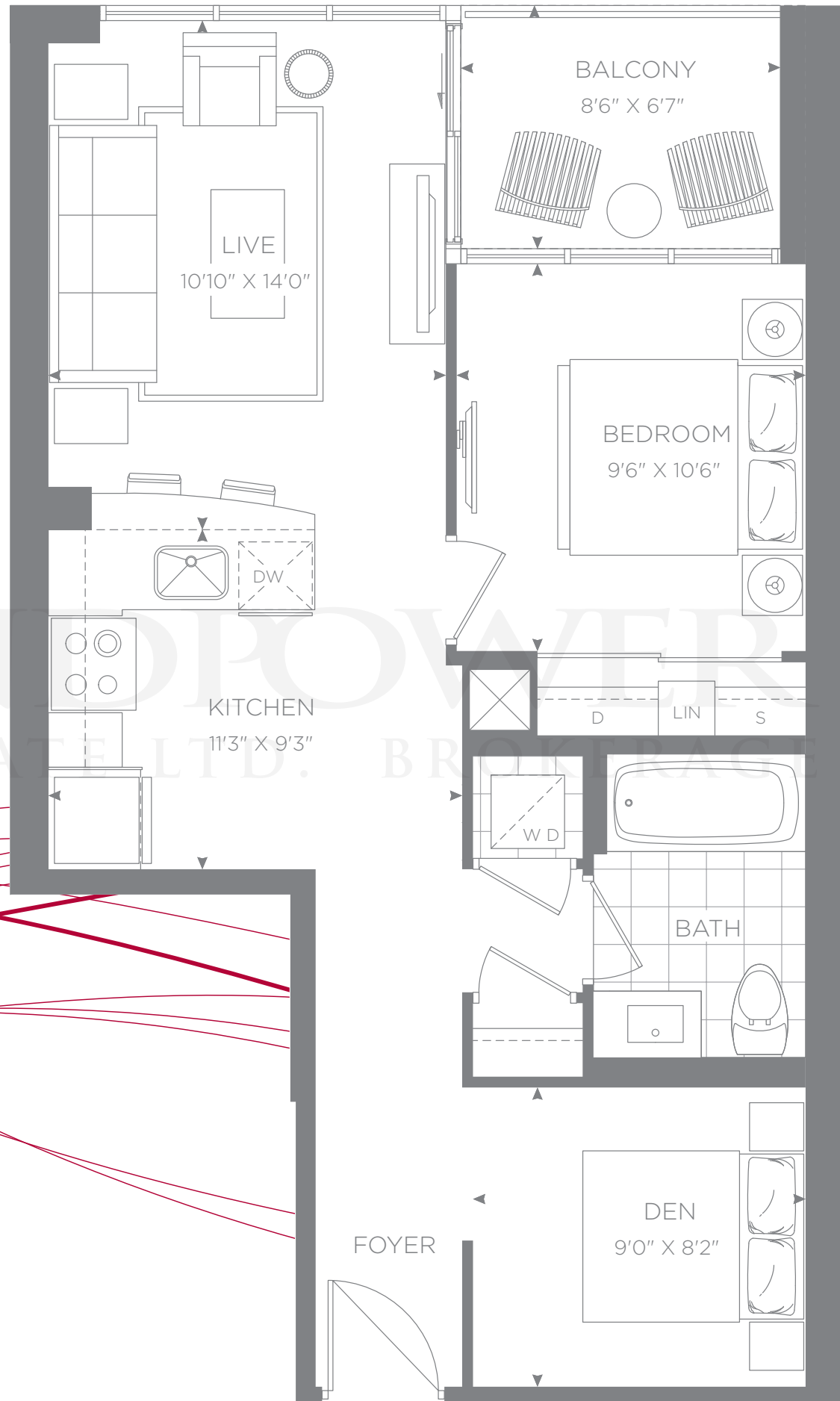
Interior: 655 sq ft

Balcony: 56 sq ft

Total: 711 sq ft



Terrace condition on floor 5.  
See sales rep for details.



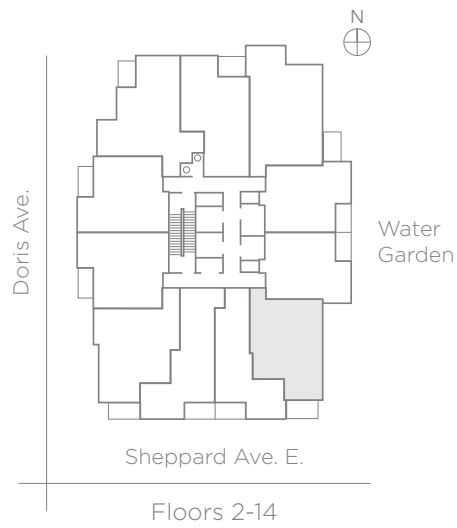
WELCOME HOME

# Spruce

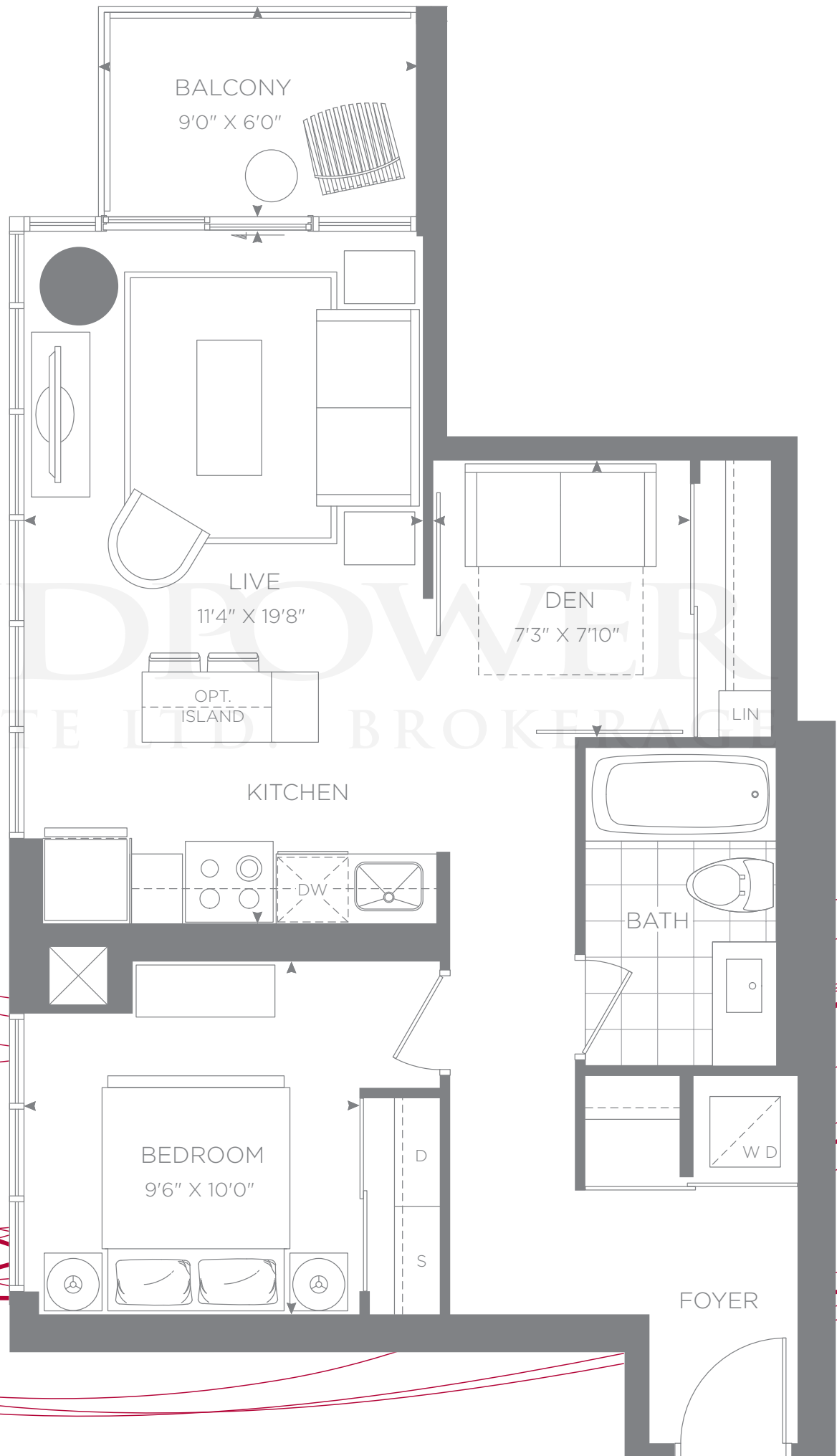
1 Bedroom + Den

665 Square Feet

Floors 2-14  
Interior: 665 sq ft  
Balcony: 54 sq ft  
Total: 719 sq ft



Terrace condition on floors 2 & 4.  
See sales rep for details.

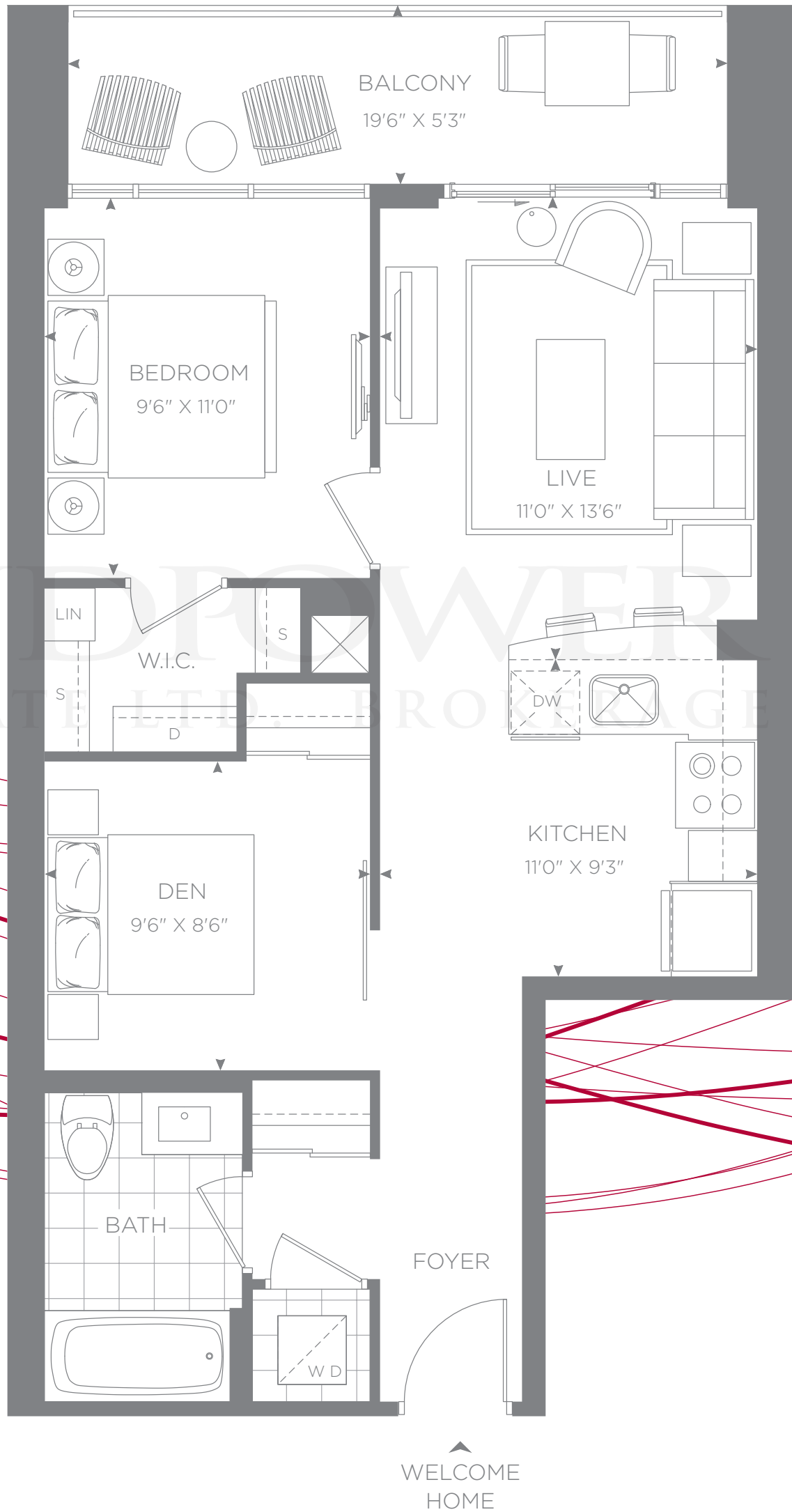
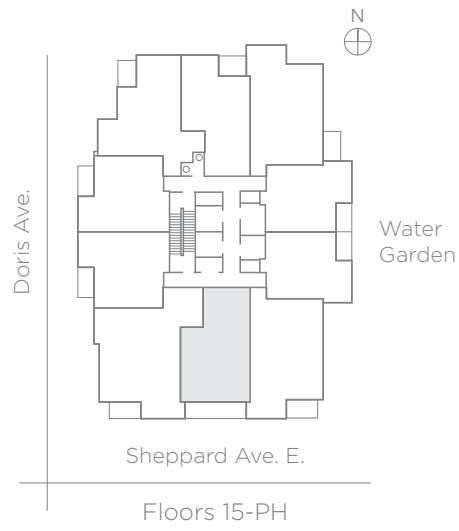


WELCOME HOME

# Pine

1 Bedroom + Den  
698 Square Feet

Floors 15-PH (35)  
Interior: 698 sq ft  
Balcony: 102 sq ft  
Total: 800 sq ft



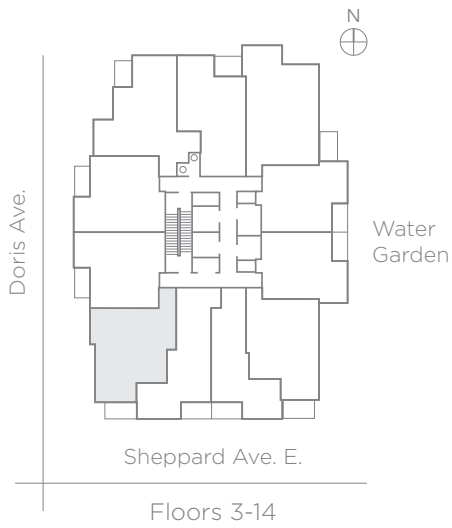


# Cypress

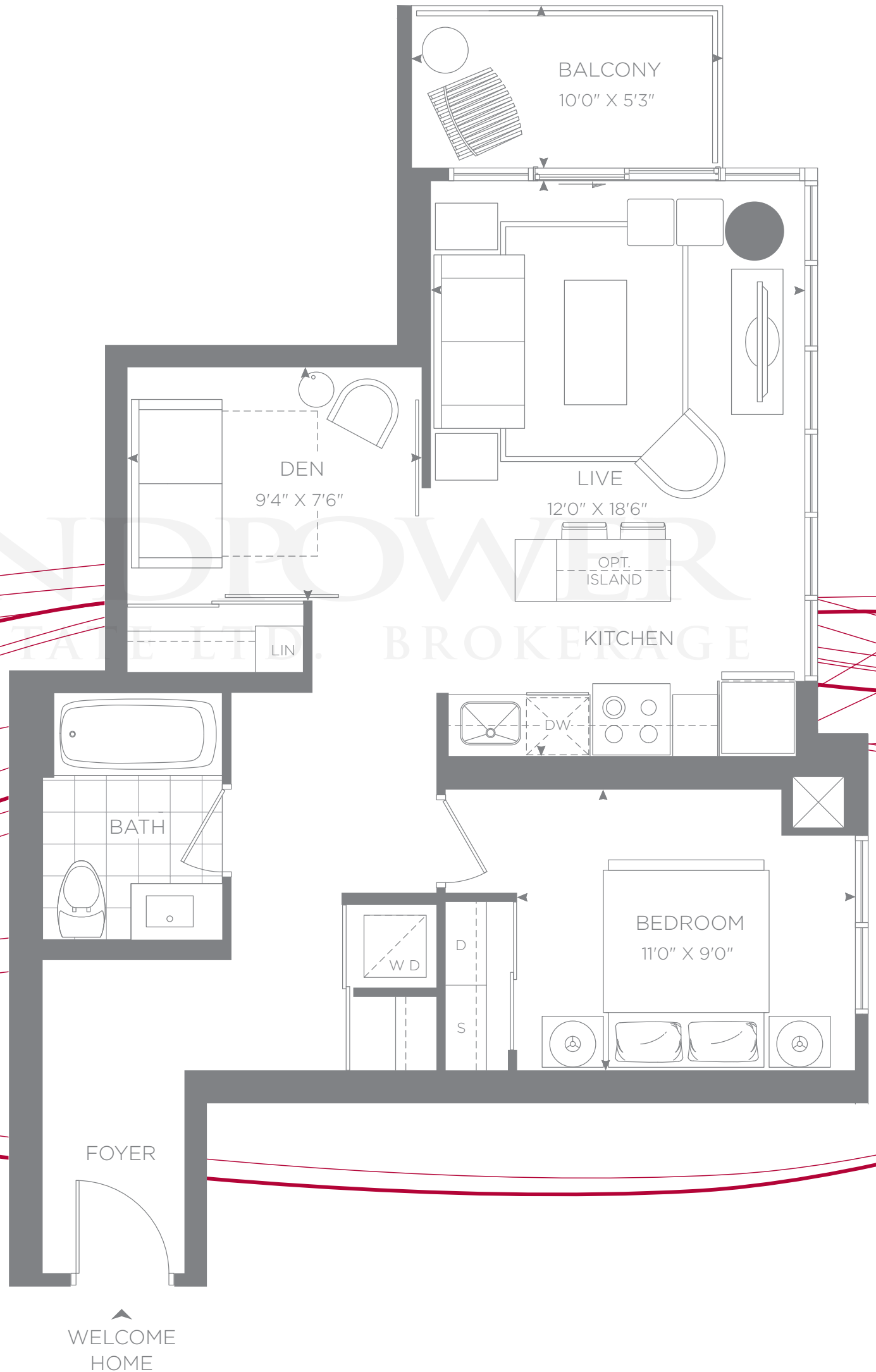
Jr. 2 Bedroom

700 Square Feet

Floors 3-14  
Interior: 700 sq ft  
Balcony: 52 sq ft  
Total: 752 sq ft



Terrace condition on floor 3.  
See sales rep for details.

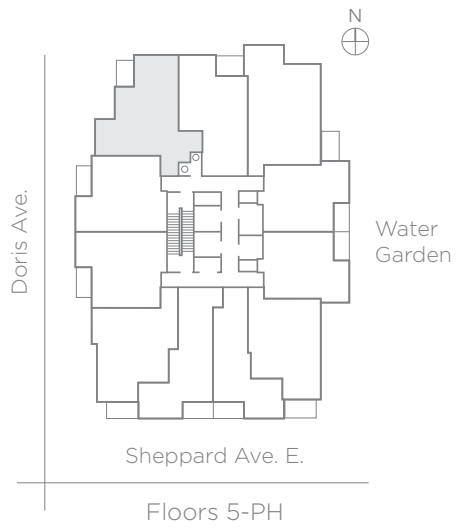


# Bamboo

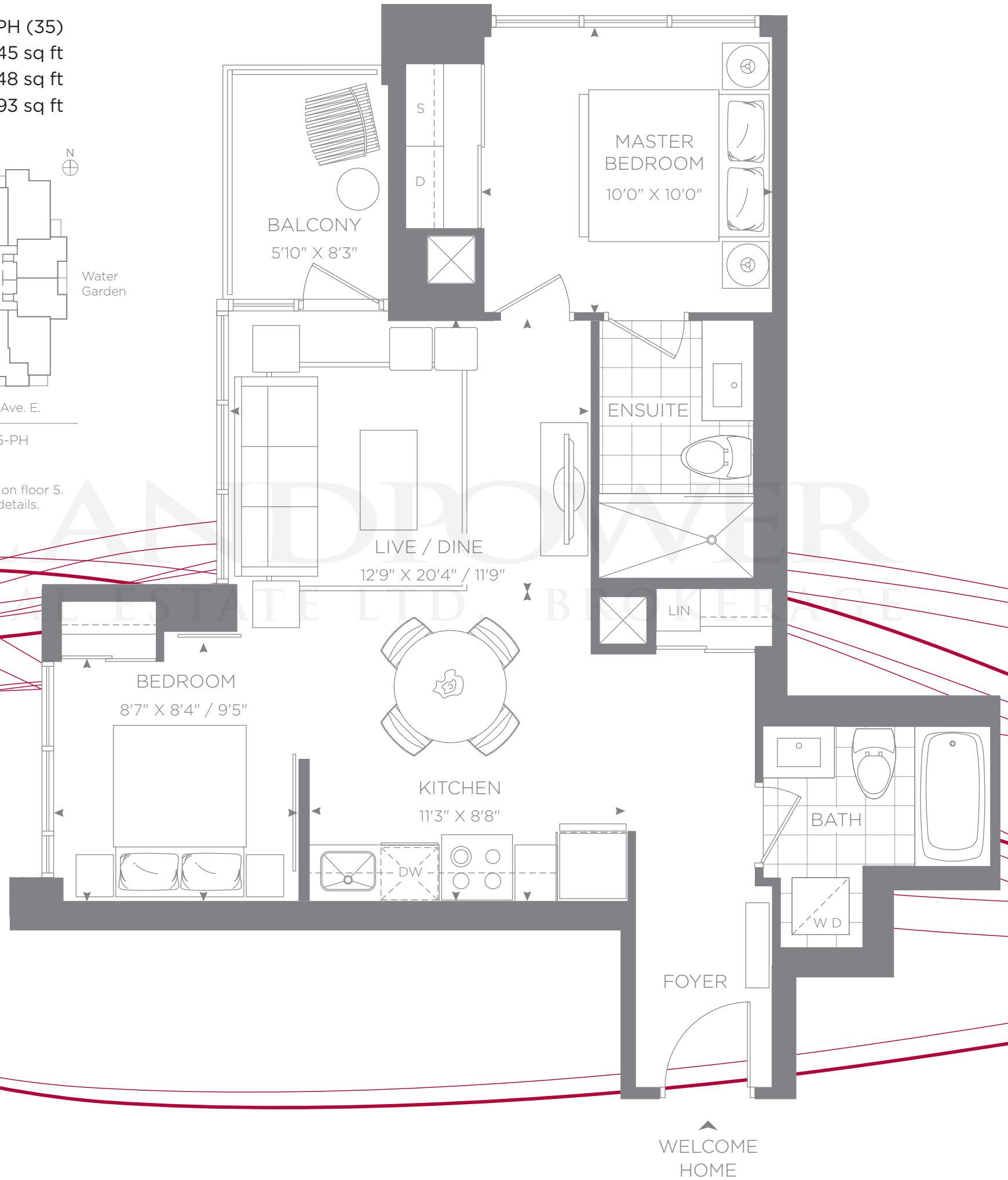
2 Bedroom

745 Square Feet

Floors 5-PH (35)  
Interior: 745 sq ft  
Balcony: 48 sq ft  
Total: 793 sq ft



Terrace condition on floor 5.  
See sales rep for details.



# Rose

2 Bedroom

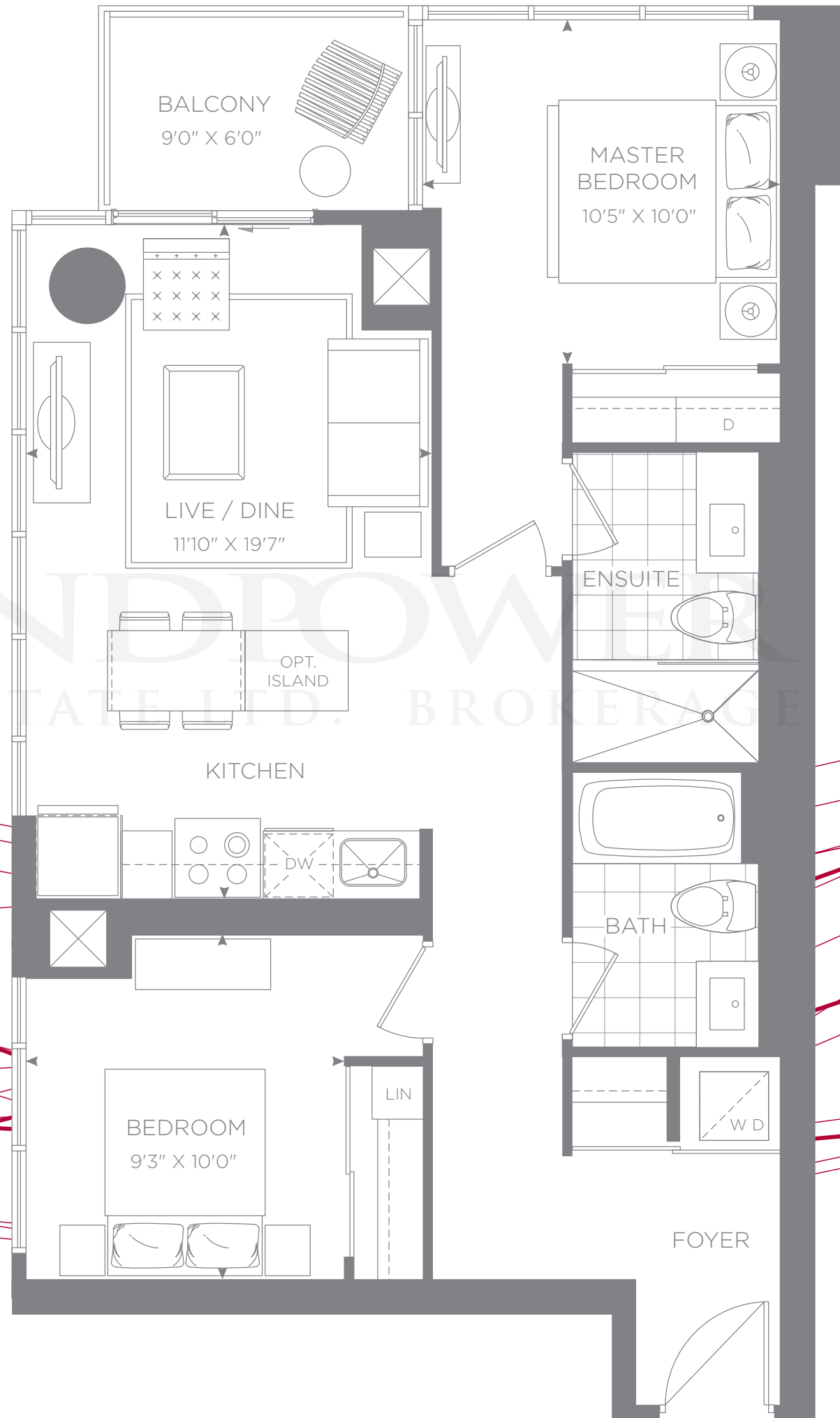
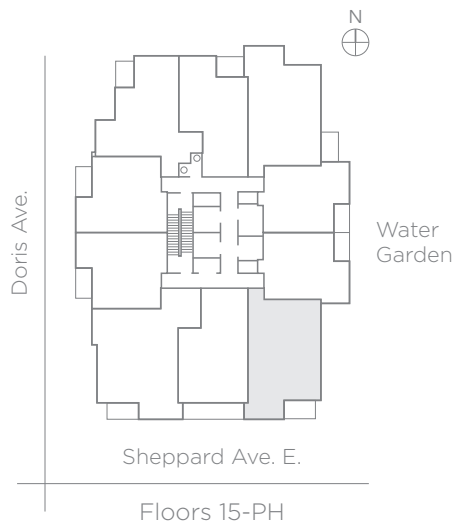
817 Square Feet

Floors 15-PH (35)

Interior: 817 sq ft

Balcony: 54 sq ft

Total: 871 sq ft



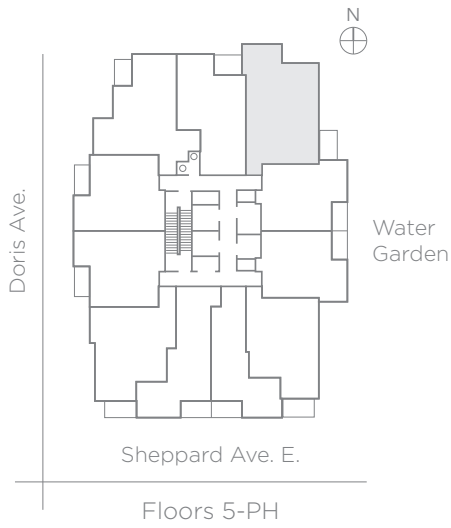
LANDPOWER REAL ESTATE LTD. BROKERAGE

# Cherry

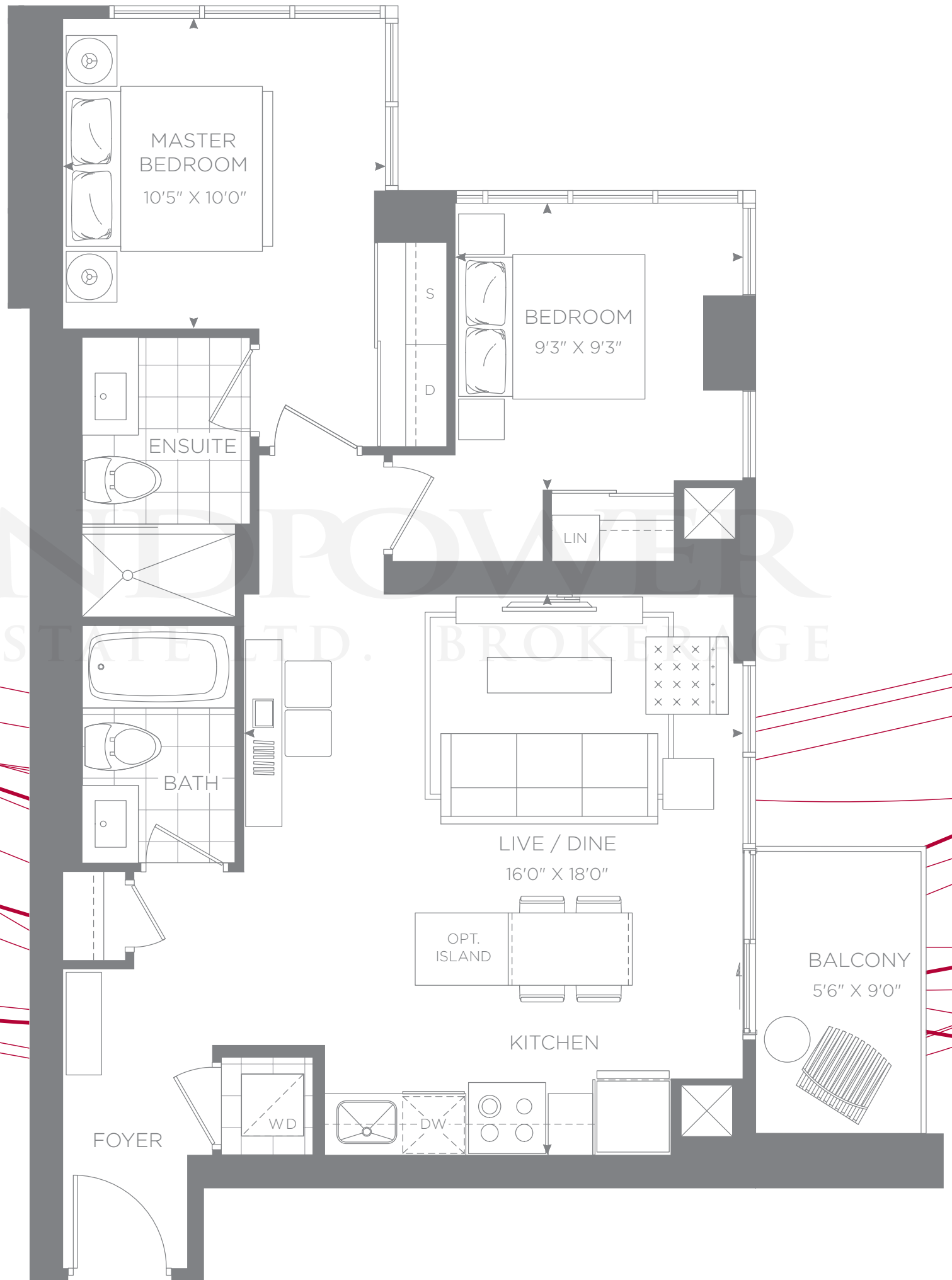
2 Bedroom

823 Square Feet

Floors 5-PH (35)  
Interior: 823 sq ft  
Balcony: 50 sq ft  
Total: 873 sq ft



Terrace condition on floor 5.  
See sales rep for details.



WELCOME HOME

# Banyan

2 Bedroom + Den

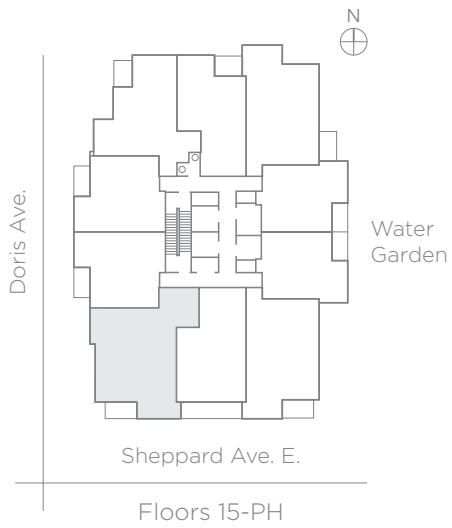
968 Square Feet

Floors 15-PH (35)

Interior: 968 sq ft

Balcony: 53 sq ft

Total: 1021 sq ft



LANDPROVER  
REAL ESTATE LTD. BROKERAGE

