

Vanities on either side with quartz countertop and return†

Private water closet†

Chandelier (upgrade)

Tons of natural light (corner unit condition)



Spacious Master Ensuite

Applied molding around the perimeter with chair rail

Free standing soaker tub

Tile mosaic insert detail (upgrade)

In-floor heating

Rendering is an artist's impression.



Custom designed
kitchen cabinets*

Pendant lighting
(upgrade)

Quartz backsplash* to
full height to match
countertop (upgrade)

Coffered waffle
ceiling (upgrade)

Gourmet Kitchen with Integrated Appliances

LED under cabi-
net lighting

Expansive island with bank of
drawers, dishwasher, wine
fridge and breakfast counter

Quartz countertop*
for kitchen and island

Rendering is an artist's impression.

* As per vendor's standard selections

† As per plan

Stunning Living Room

Applied molding on 10 ft high smooth ceilings for the living room

Full height applied molding walls in living room

Custom millwork on either side of fireplace



THE VICTORIA

Five Bedroom
Family Room
Library/Den
Five and a Half Bathrooms

3,349 sf (*Includes 618 sf Lower level*)
plus 496 sf Outdoor Terrace
plus 433 sf Backyard

TOTAL 4,278 sf

LANDPOWER
REAL ESTATE LTD. BROKERAGE

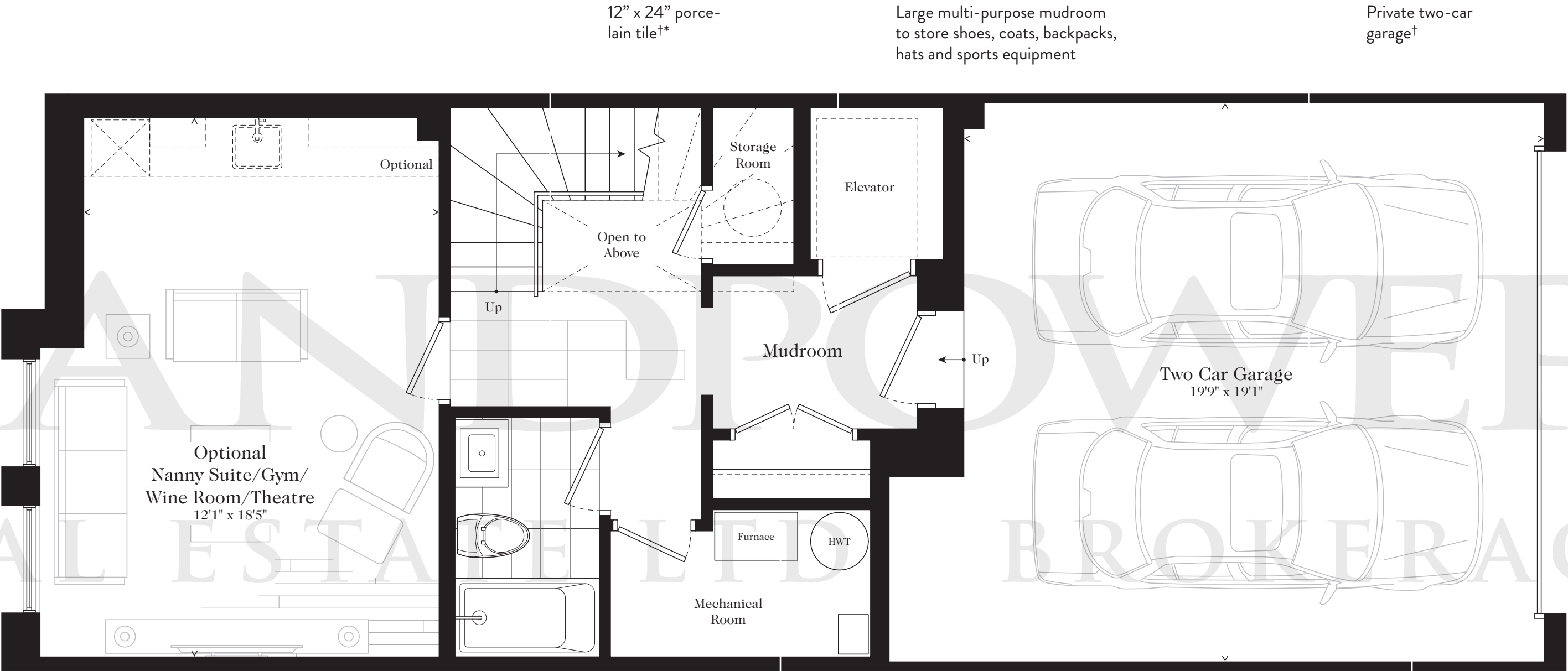


EMPRESS PARK
Luxury Towns on Bayview

EMPRESSPARK.CA

TOTAL 4,278 sf





THE ALEXANDRA

Three Bedroom
Family Room/Den
Three and a Half Bathrooms

3,327 sf (*Includes 571 sf Lower level*)
plus 510 sf Outdoor Terrace
plus 456 sf Backyard

TOTAL 4,293 sf

LANDPOWER
REAL ESTATE LTD. BROKERAGE



EMPRESS PARK
Luxury Towns on Bayview

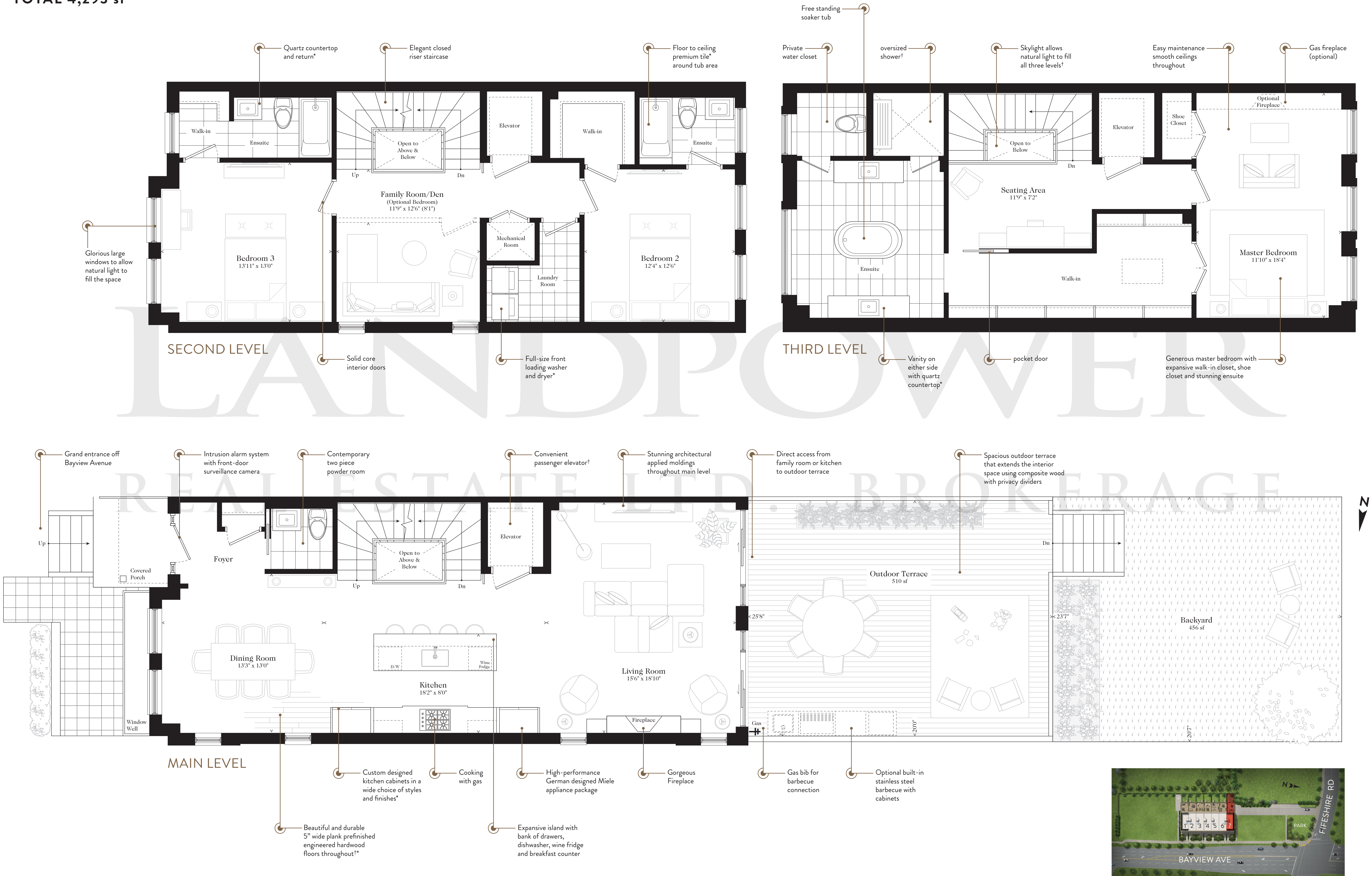
EMPRESSPARK.CA

THE ALEXANDRA

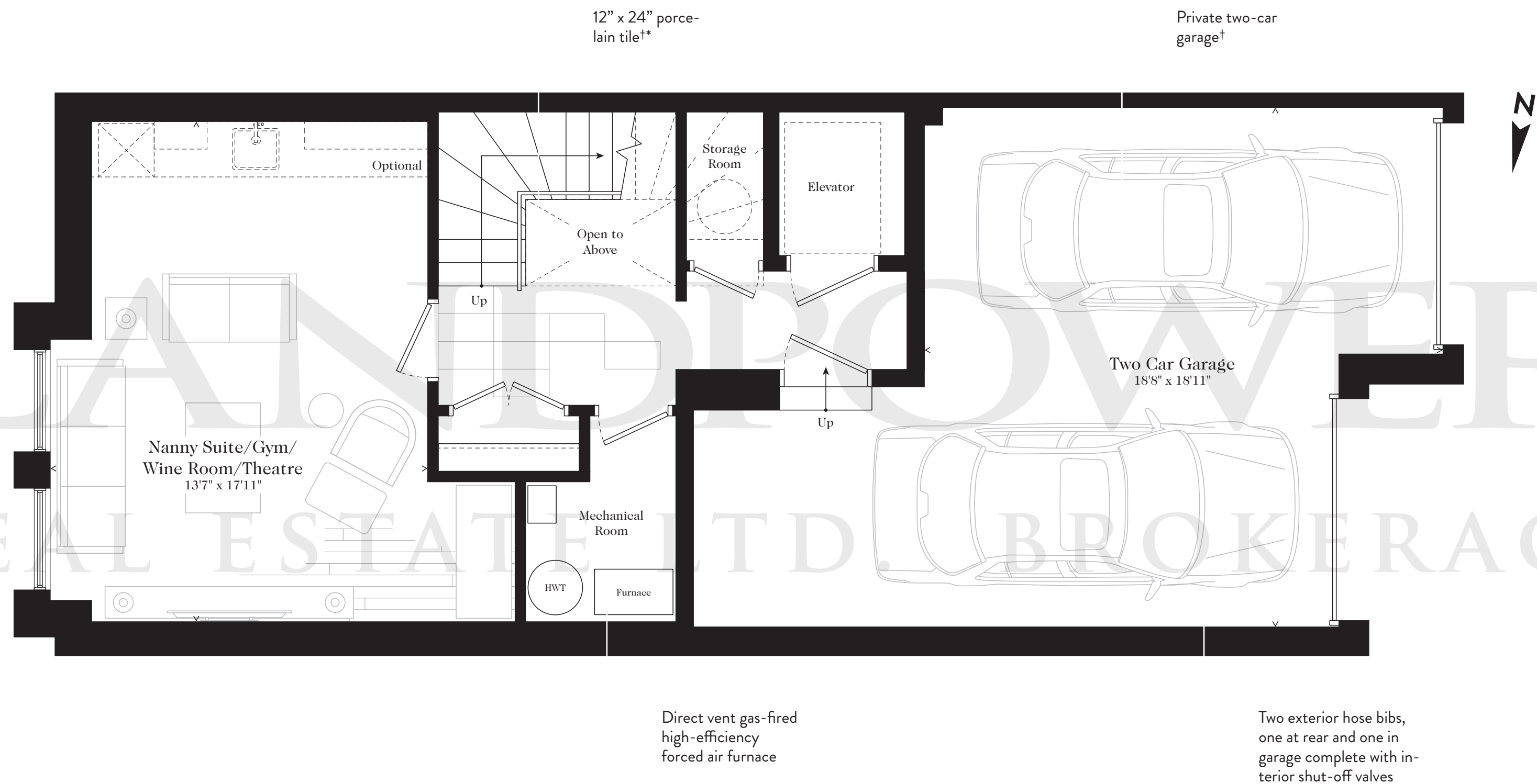
Three Bedroom | Family Room/Den | Three and a Half Bathrooms

3,327 sf (Includes 571 sf Lower level) *plus* 510 sf Outdoor Terrace *plus* 456 sf Backyard

TOTAL 4,293 sf



* As per vendor's standard selections † As per plan Number of risers may vary. Materials, specifications and floor plans are subject to change without notice. Renderings and illustrations are an artist's impression. All furniture, planters and shrubs shown on marketing plans are not included. All floor plans are approximate dimensions. Actual useable floor space may vary from the stated floor area. E.S.O.E.



THE ELIZABETH

Three Bedroom
Family Room/Den
Four and a Half Bathrooms

3,391 sf (*Includes 631 sf Lower level*)
plus 511 sf Outdoor Terrace
plus 397 sf Backyard

TOTAL 4,299 sf

LANDPOWER
REAL ESTATE LTD. BROKERAGE



EMPRESS PARK
Luxury Towns on Bayview

EMPRESSPARK.CA

TOTAL 4,299 sf

