



Halo

RESIDENCES ON YONGE

Cresford

LUXURY SUITES

FEATURES + FINISHES

GOURMET CHEF KITCHENS

- Choice of designer granite or quartz countertops
- Choice of contemporary kitchen cabinetry
- Modern open concept kitchens, as per plan
- Stainless steel appliances including, refrigerator/ freezer, multi-cycle dishwasher, microwave and vent
- Designer selected ceiling mounted light fixture as per plan
- Under mount stainless steel sink with lever faucet
- Choice of designer selected ceramic backsplash

LUXURIOUS DESIGNER BATHROOMS

- Ensuite master bathroom with choice of designer marble countertops
- Second bathroom comes with cultured marble countertop and basin
- Choice of contemporary vanity cabinetry
- Separate shower stall with light sconce as per plan
- Choice of full height porcelain tile bathtub and shower surround as per plan
- Stylish chrome finish bathroom hardware
- Temperature controlled and pressure balanced shower faucets
- Elegant and decorative wall lighting fixture
- Wall mounted frameless mirror

HIGH QUALITY FLOORING

- Choice of quality durable laminate floors in all living areas as per plan
- Choice of porcelain tile flooring in bathrooms as per plan
- White ceramic tile in laundry areas

CONVENIENT IN-SUITE LAUNDRY

- Stacked washer and dryer
- Dryer vented to exterior of suite

ELEGANT SUITE DOORS

- Entrance door with privacy and security viewer
- Paint grade paneled interior suite doors with polished chrome levers (where applicable)
- Contemporary glass sliding doors (where applicable)

GENERAL SUITE FEATURES

- Smooth ceilings in living areas
- Dropped drywall ceilings in bathrooms as per plan
- 4" painted baseboard throughout
- Balconies or terraces with railings as per plan
- Capped ceiling outlet in dining area
- Pre-wired for cable television in living, master bedroom and den as per plan
- Pre-wired for telephone in living, master bedroom and den as per plan
- Individual thermostat controlled system for heating and air conditioning
- Plastic coated wire shelving in all closets including linen; shelving as per plan
- Wired for high speed internet access
- Entrance security panel within suite connected to concierge
- Smoke and carbon monoxide detectors as per building code
- Underground parking garage security consists of panic buttons, closed circuit cameras and high intensity lighting.

AMENITIES

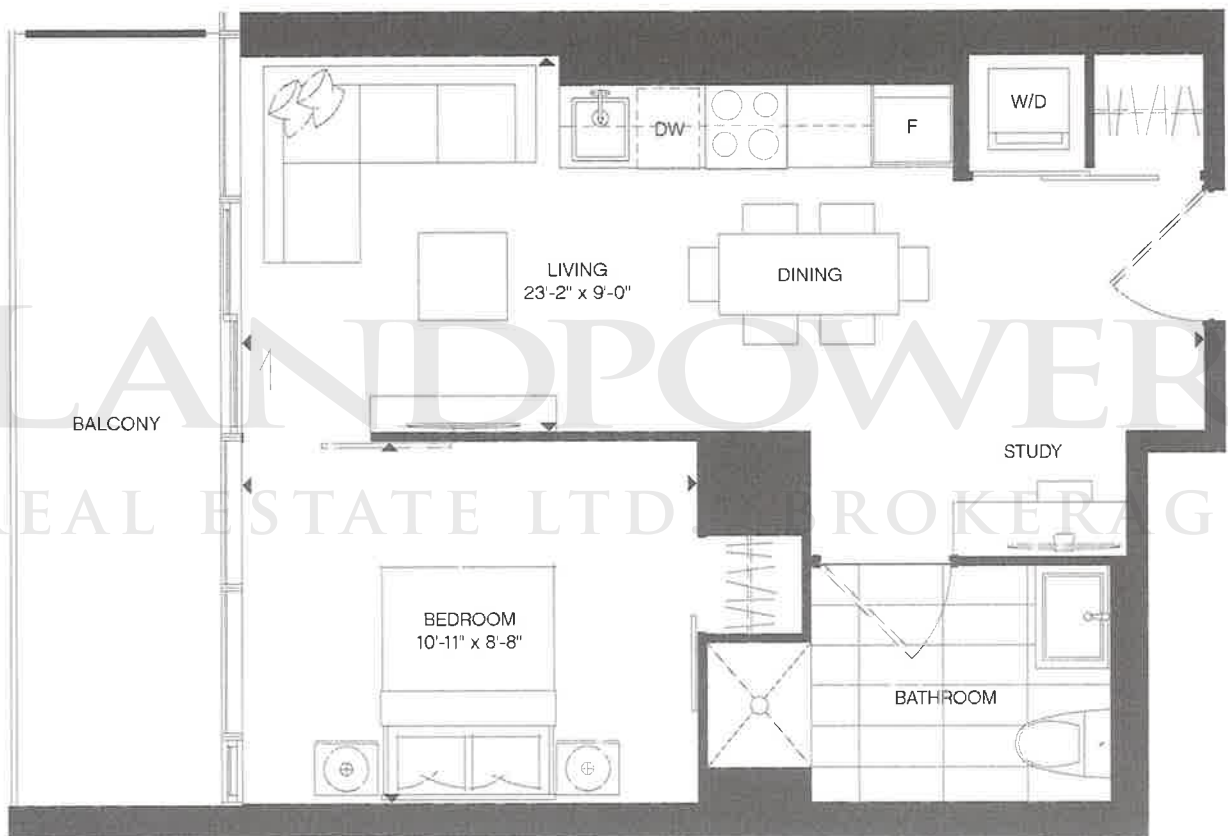
- 24/7 Concierge
- Lounge with separate dining/kitchen
- State-of-the-art fitness and wellness space with yoga/stretch room
- Billiards/games room
- His/hers change rooms
- Guest suite
- Theatre room
- Refreshing outdoor pool

The vendor has the right to substitute other products and materials for those listed in this schedule, provided substituted products are of equal or better value. Colours and/or materials to be selected from Vendor's standard sample packages. Cresford Developments warranty backed by Tarion Warranty program for new construction.

VEGA

ONE BEDROOM + STUDY 540 SQ.FT.

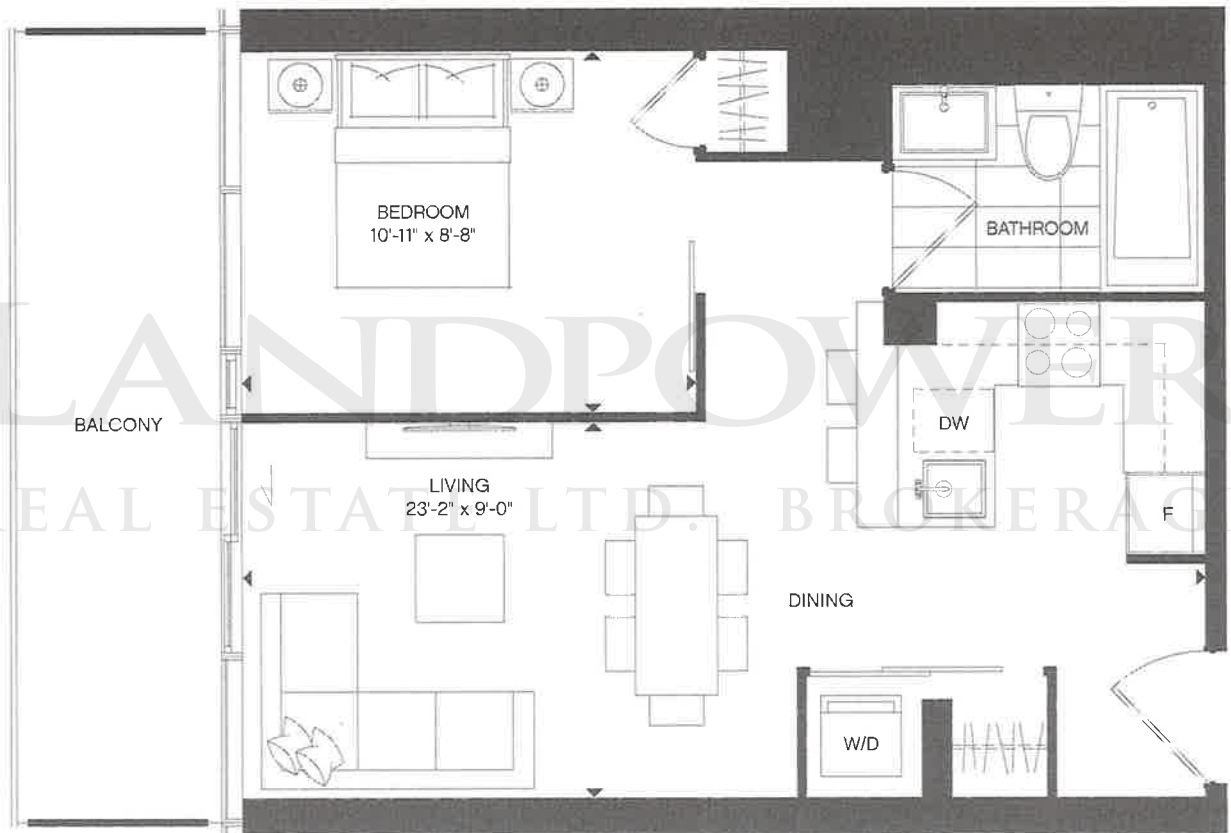
SUITE 450 SQ.FT. + 90 SQ.FT. BALCONY



CADIX

ONE BEDROOM 559 SQ.FT.

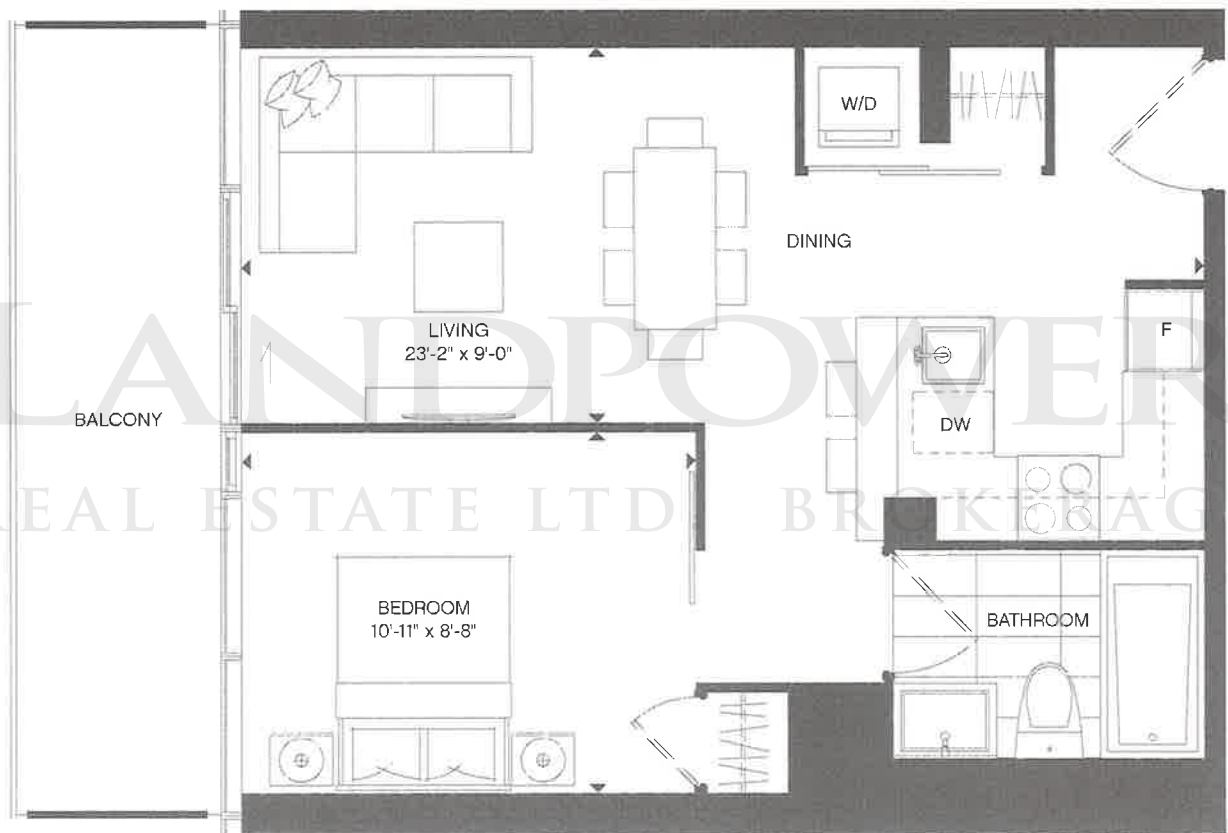
SUITE 465 SQ.FT. + 94 SQ.FT. BALCONY



TANGO

ONE BEDROOM 559 SQ.FT.

SUITE 465 SQ.FT. + 94 SQ.FT. BALCONY



FLOORS 6-20

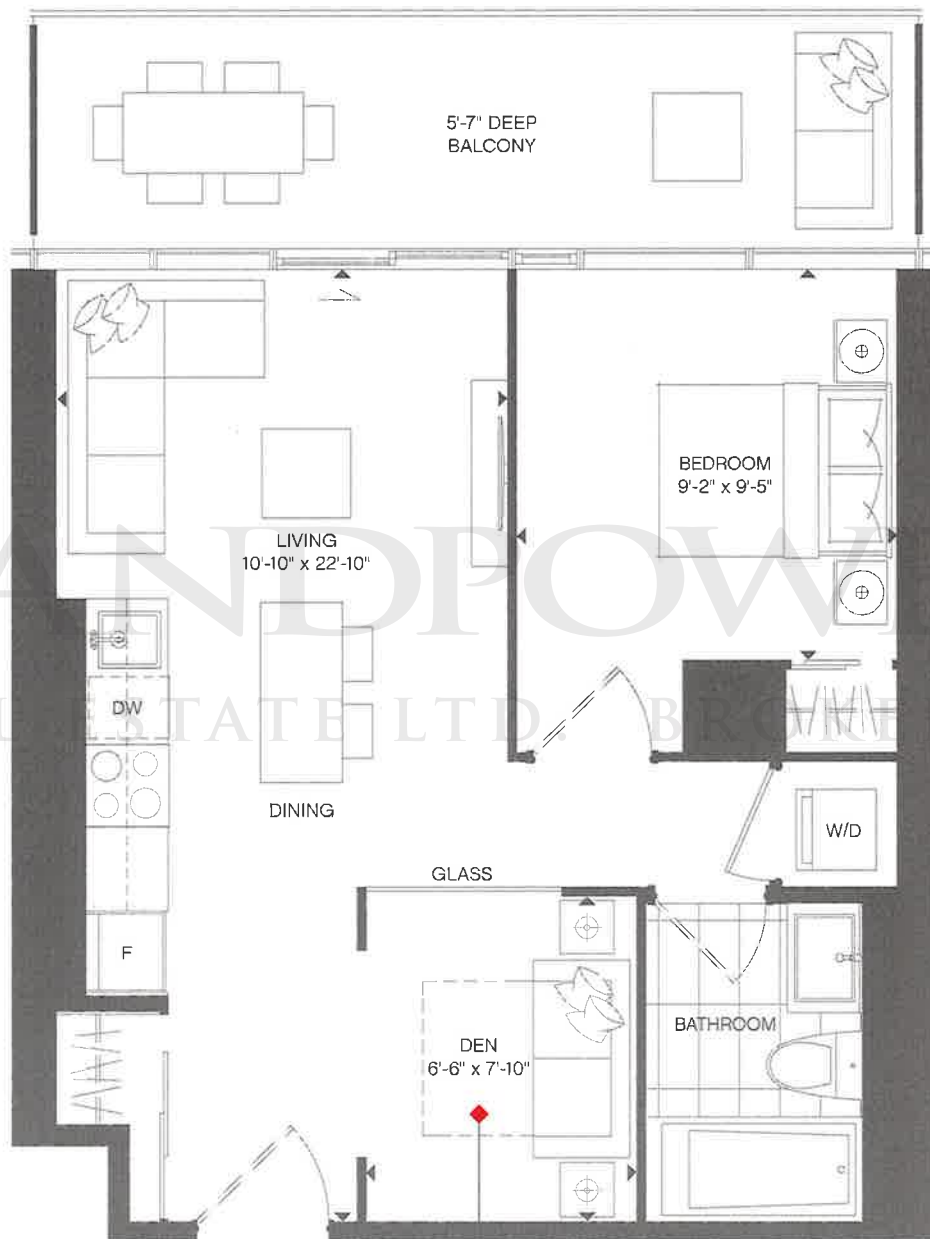


FLOORS 21-38

CELESTE

ONE BEDROOM + DEN 627 SQ.FT.

SUITE 508 SQ.FT. + 119 SQ.FT. BALCONY



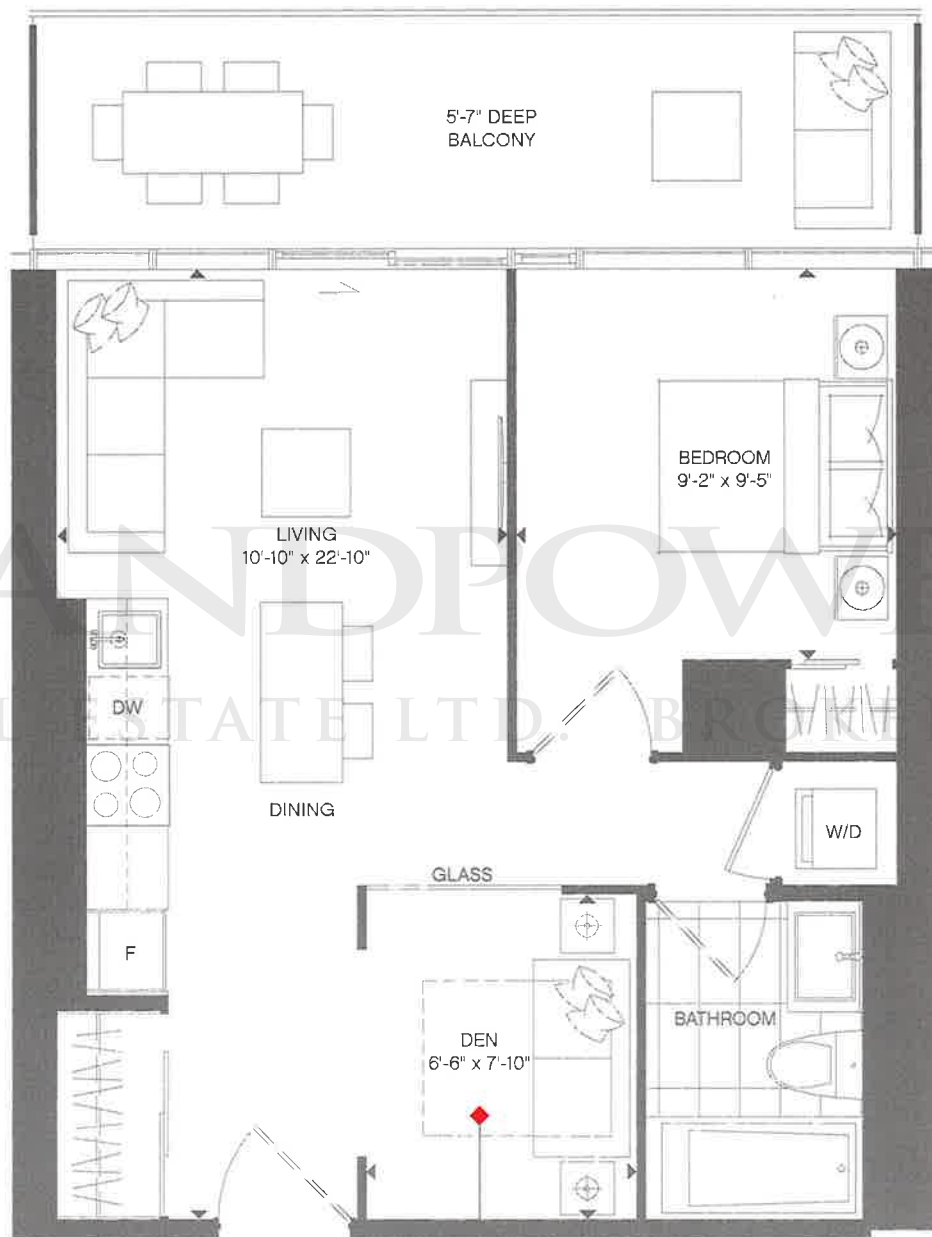
- ◆ FOR THE ENTERTAINER - Add a dining room table
- ◆ FOR THOSE WITH LOTS OF FRIENDS - Add a sofa with a pull out bed
- ◆ FOR THOSE IN NEED OF MORE SPACE - Open area to add to your living and dining room



MEDICIS

ONE BEDROOM + DEN 629 SQ.FT.

SUITE 510 SQ.FT. + 119 SQ.FT. BALCONY

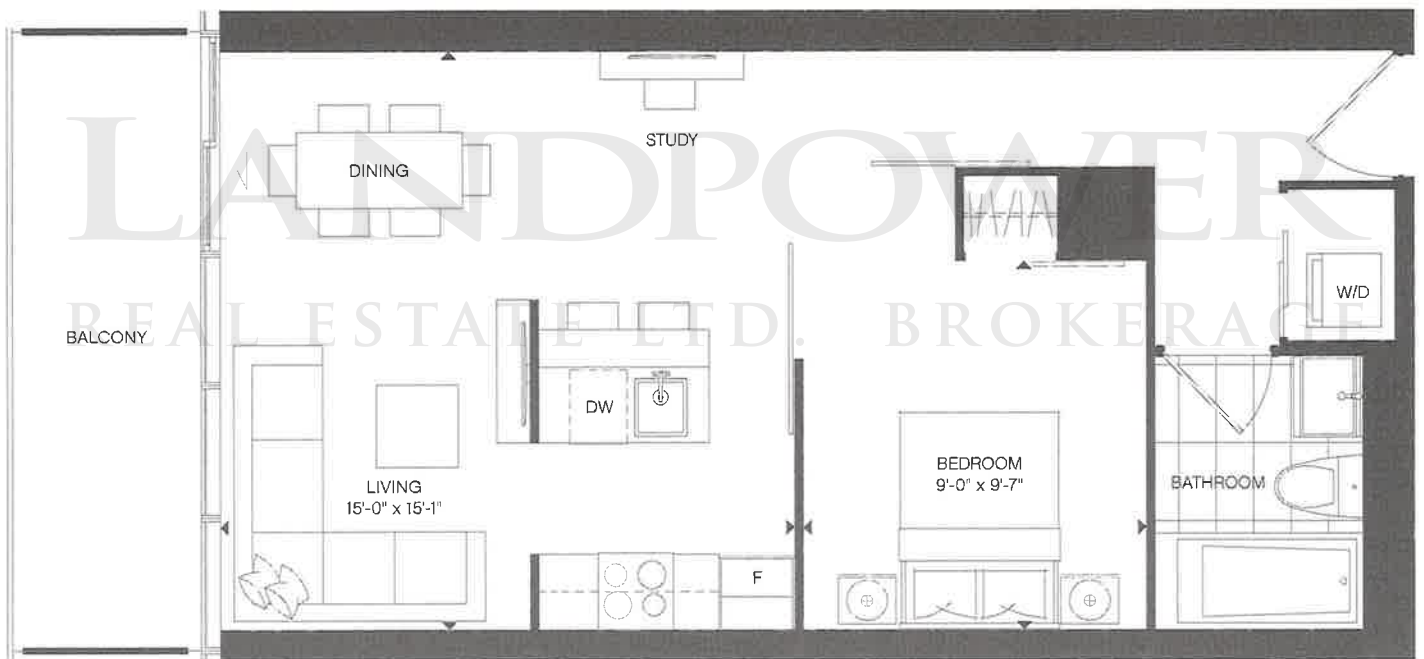


- ◆ FOR THE ENTERTAINER - Add a dining room table
- ◆ FOR THOSE WITH LOTS OF FRIENDS - Add a sofa with a pull out bed
- ◆ FOR THOSE IN NEED OF MORE SPACE - Open area to add to your living and dining room

ZENITH

ONE BEDROOM 605 SQ.FT.

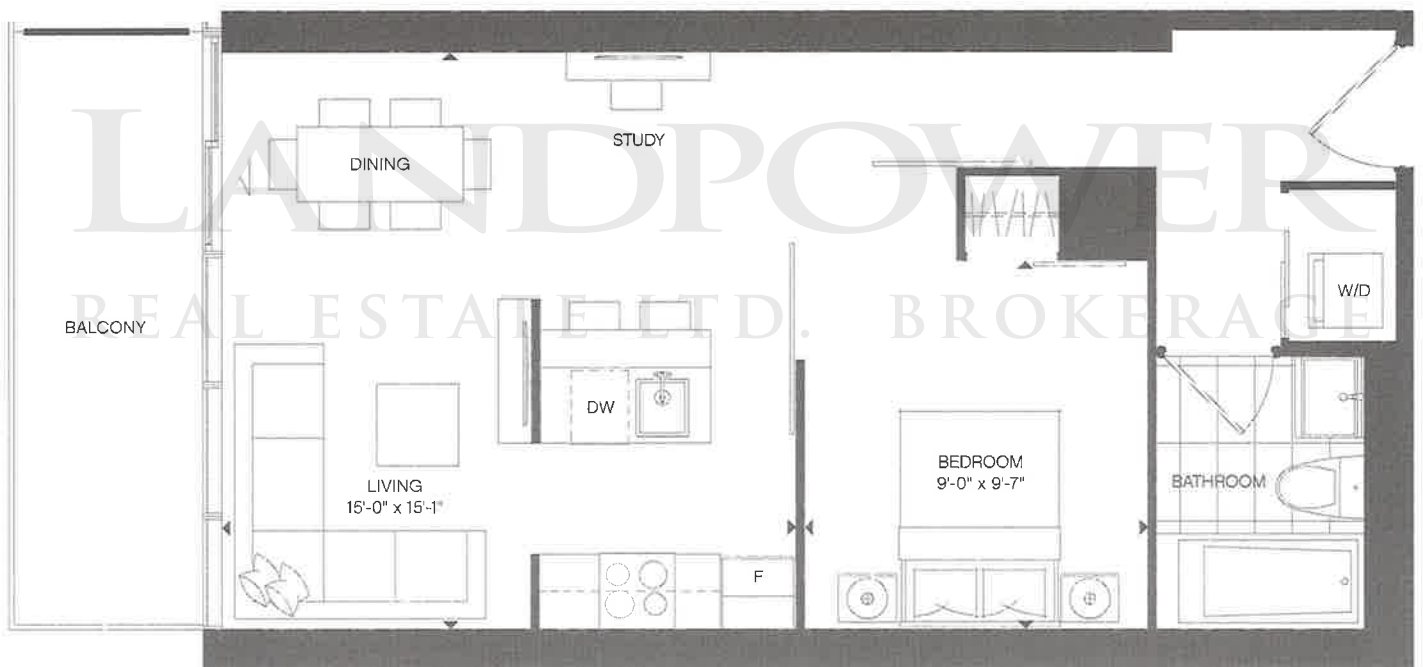
SUITE 525 SQ.FT. + 80 SQ.FT. BALCONY



FLORA

ONE BEDROOM 606 SQ.FT.

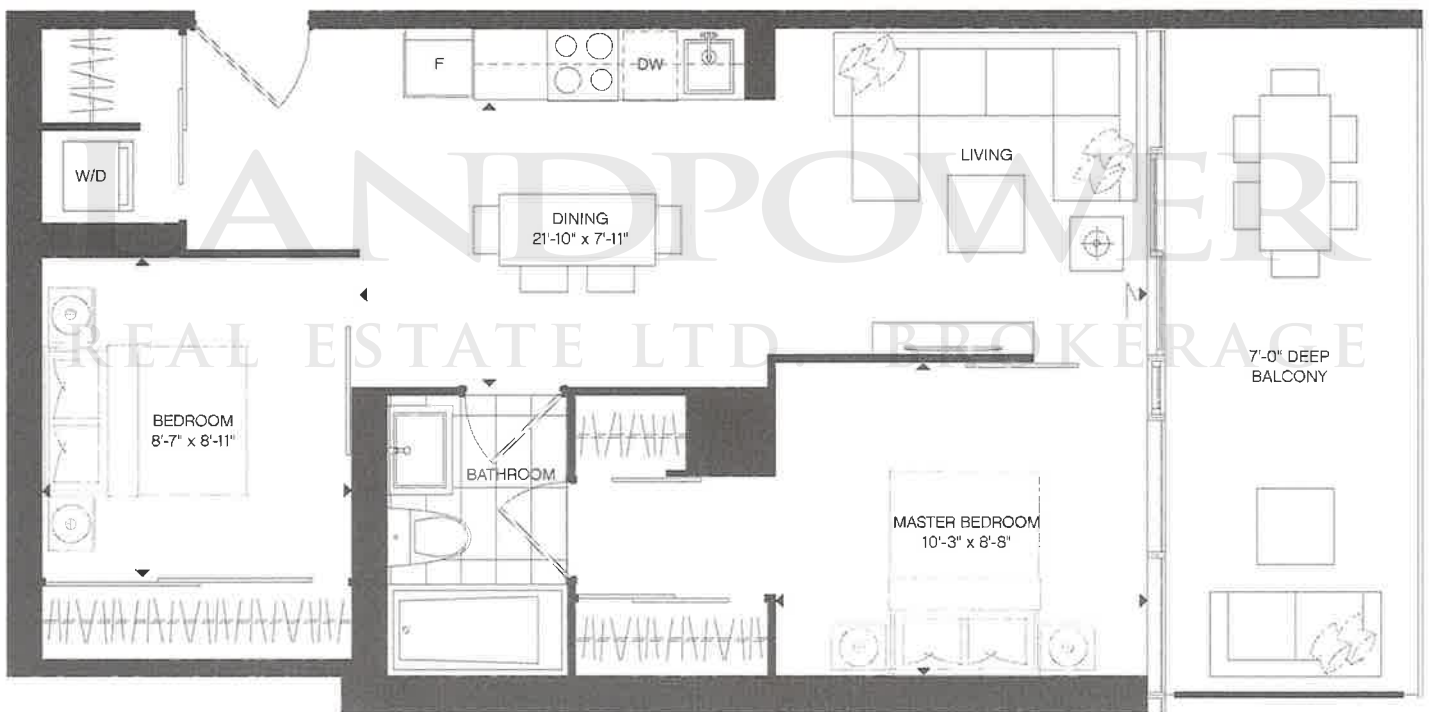
SUITE 530 SQ.FT. + 76 SQ.FT. BALCONY



LUMIÈRE

TWO BEDROOM 746 SQ.FT.

SUITE 620 SQ.FT. + 126 SQ.FT. BALCONY



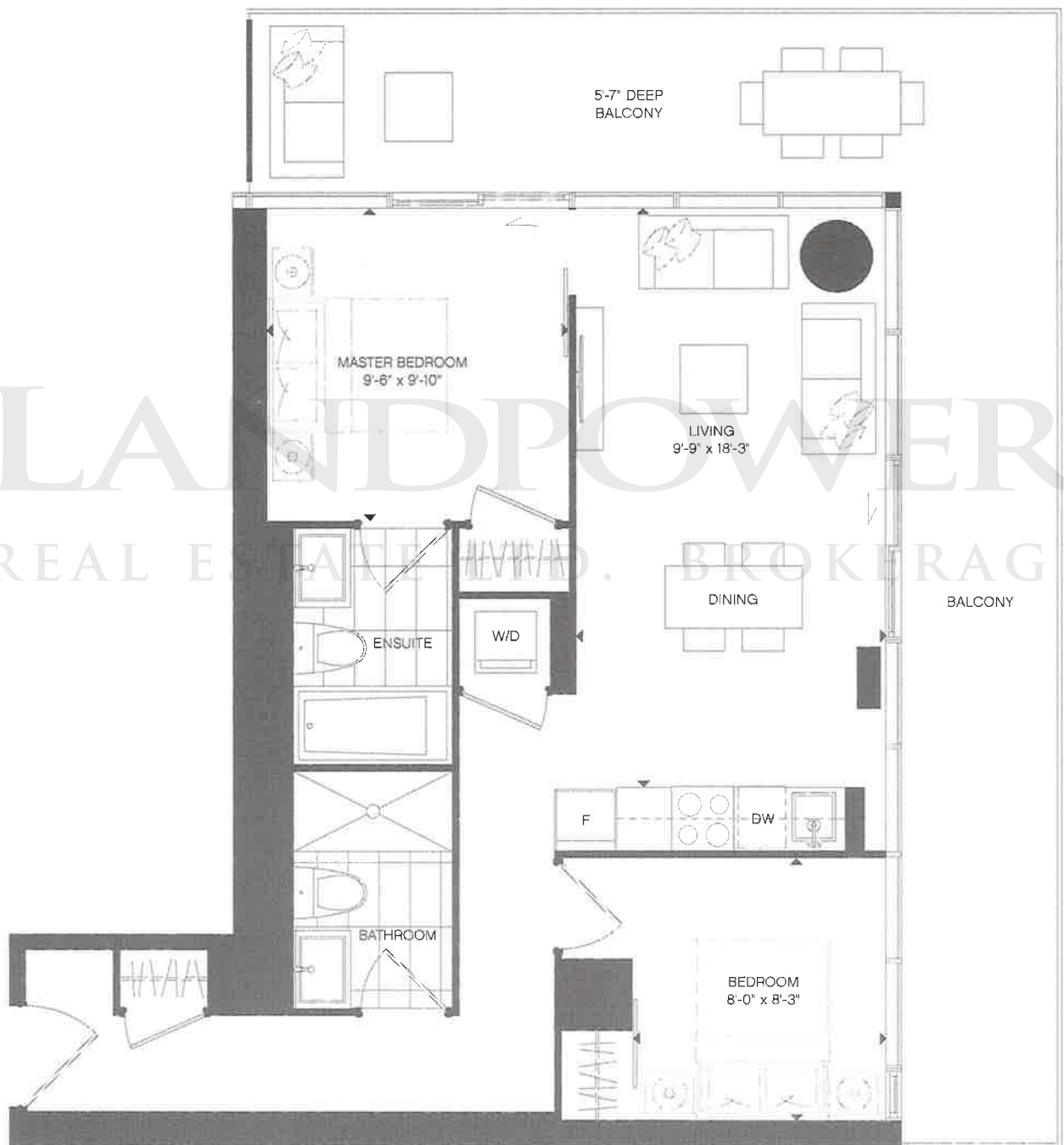
FLOORS 6-20



FLOORS 21-38

LUXOR

TWO BEDROOM 960 SQ.FT.
SUITE 670 SQ.FT. + 290 SQ.FT. BALCONY



ELLIPSE

TWO BEDROOM 786 SQ.FT.

SUITE 680 SQ.FT. + 106 SQ.FT. BALCONY



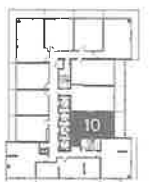
EQUINOX

TWO BEDROOM 808 SQ.FT.

SUITE 682 SQ.FT. + 126 SQ.FT. BALCONY



FLOORS 6-20



FLOORS 21-38

HARMONIE

TWO BEDROOM 818 SQ.FT.

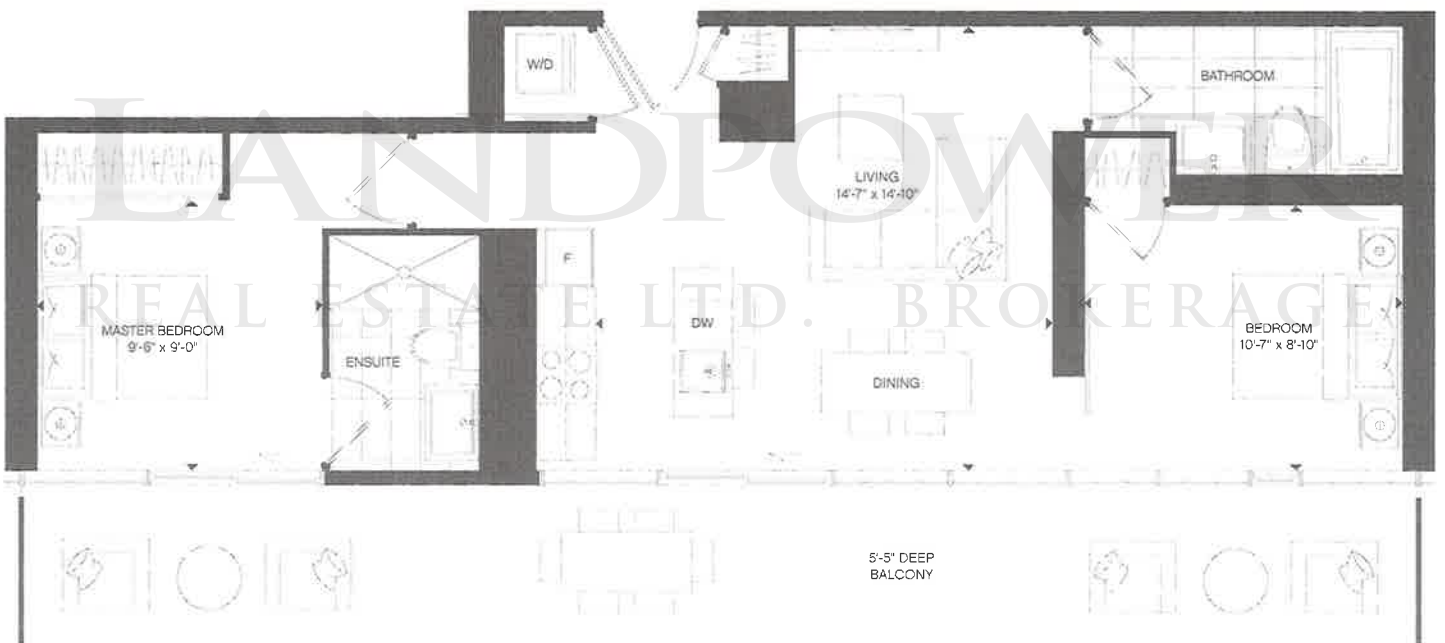
SUITE 685 SQ.FT. + 133 SQ.FT. BALCONY



CRYSTAL

TWO BEDROOM 938 SQ.FT.

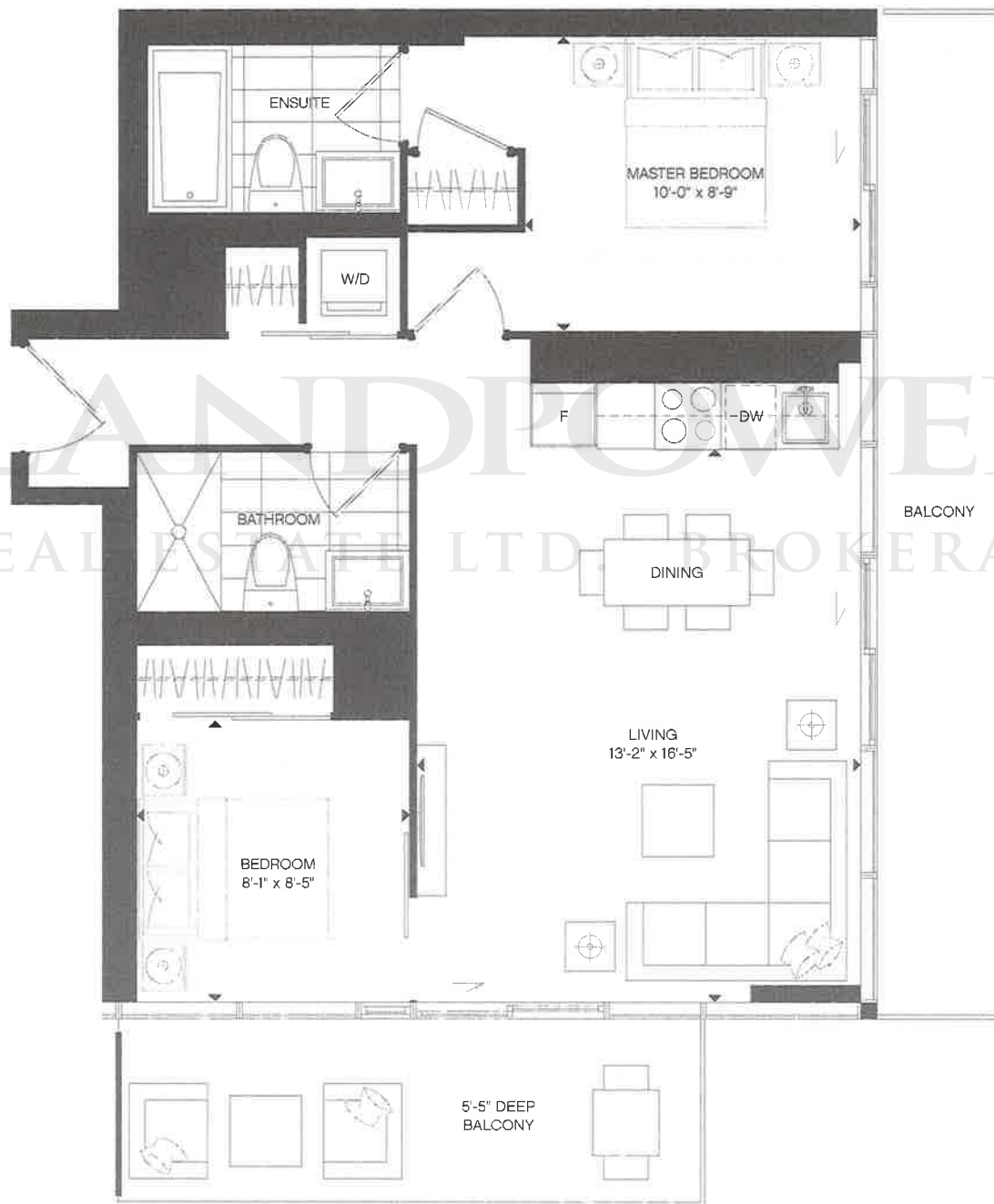
SUITE 685 SQ.FT. + 253 SQ.FT. BALCONY



JUPITER

TWO BEDROOM 904 SQ.FT.

SUITE 700 SQ.FT. + 204 SQ.FT. BALCONY



CHARISMA

TWO BEDROOM 1,011 SQ.FT.

SUITE 710 SQ.FT. + 301 SQ.FT. BALCONY



FLOORS 6-20

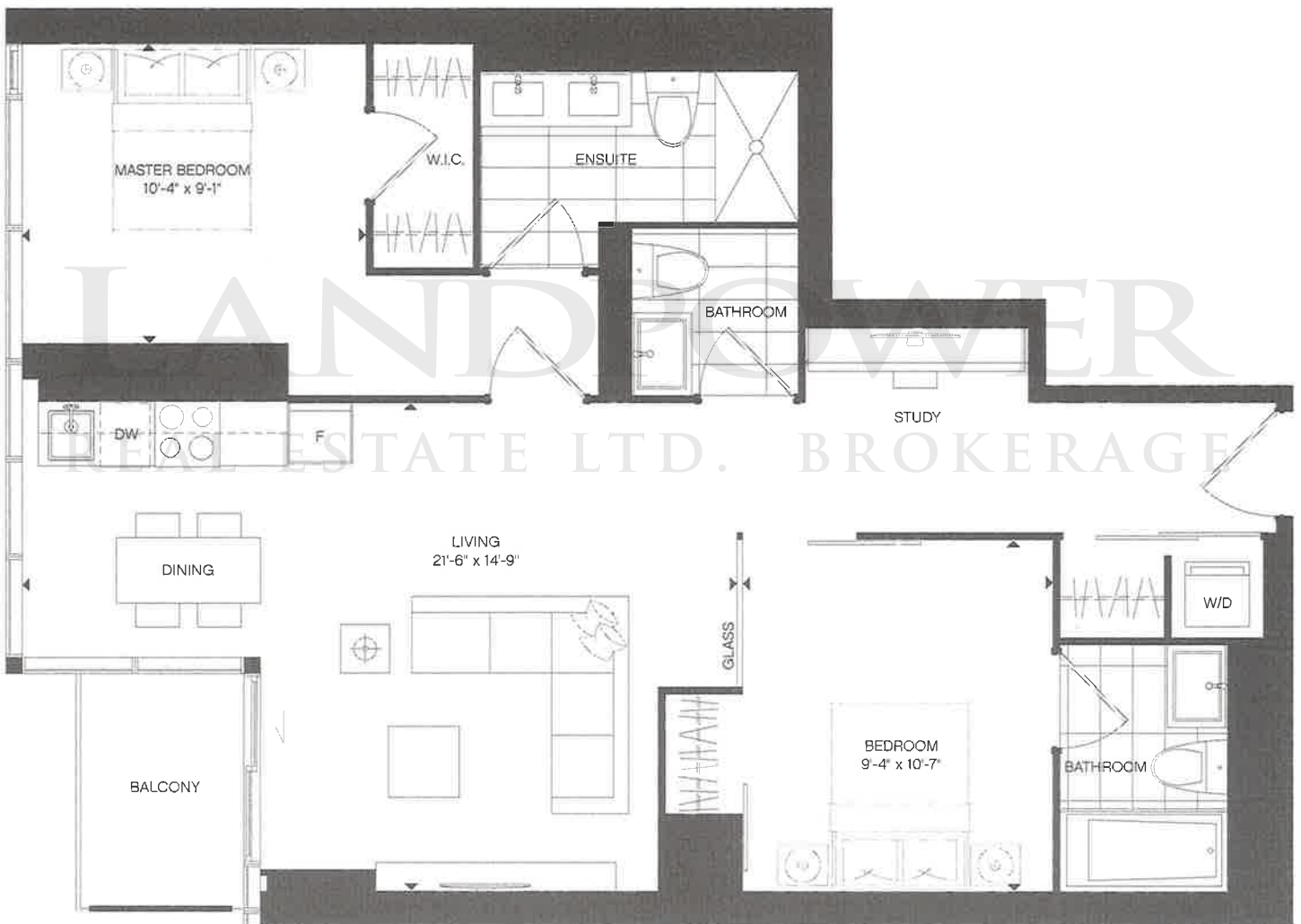


FLOORS 21-38

MASSENA

TWO BEDROOM 901 SQ.FT.

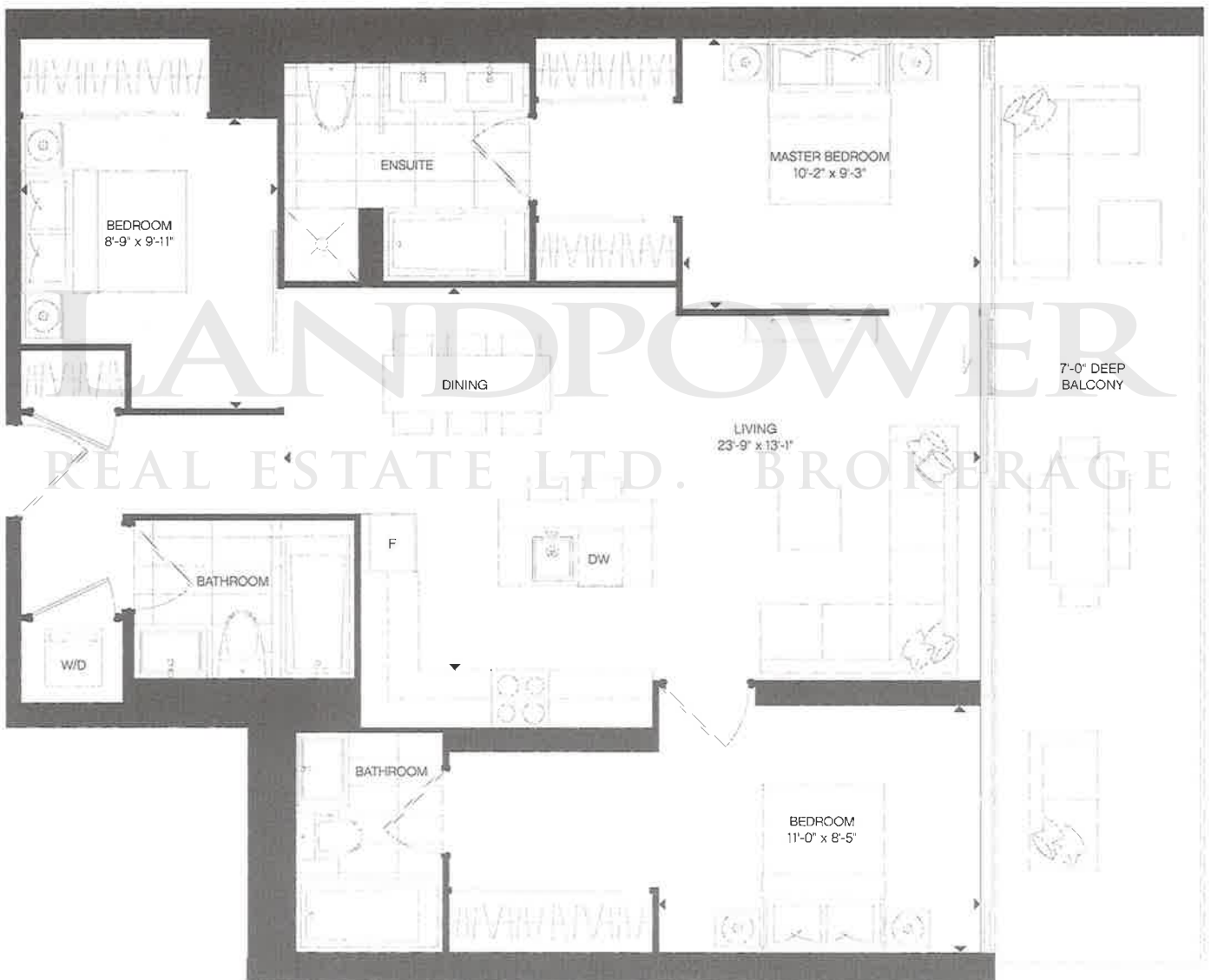
SUITE 866 SQ.FT. + 35 SQ.FT. BALCONY



INFINITY

THREE BEDROOM 1,275 SQ.FT.

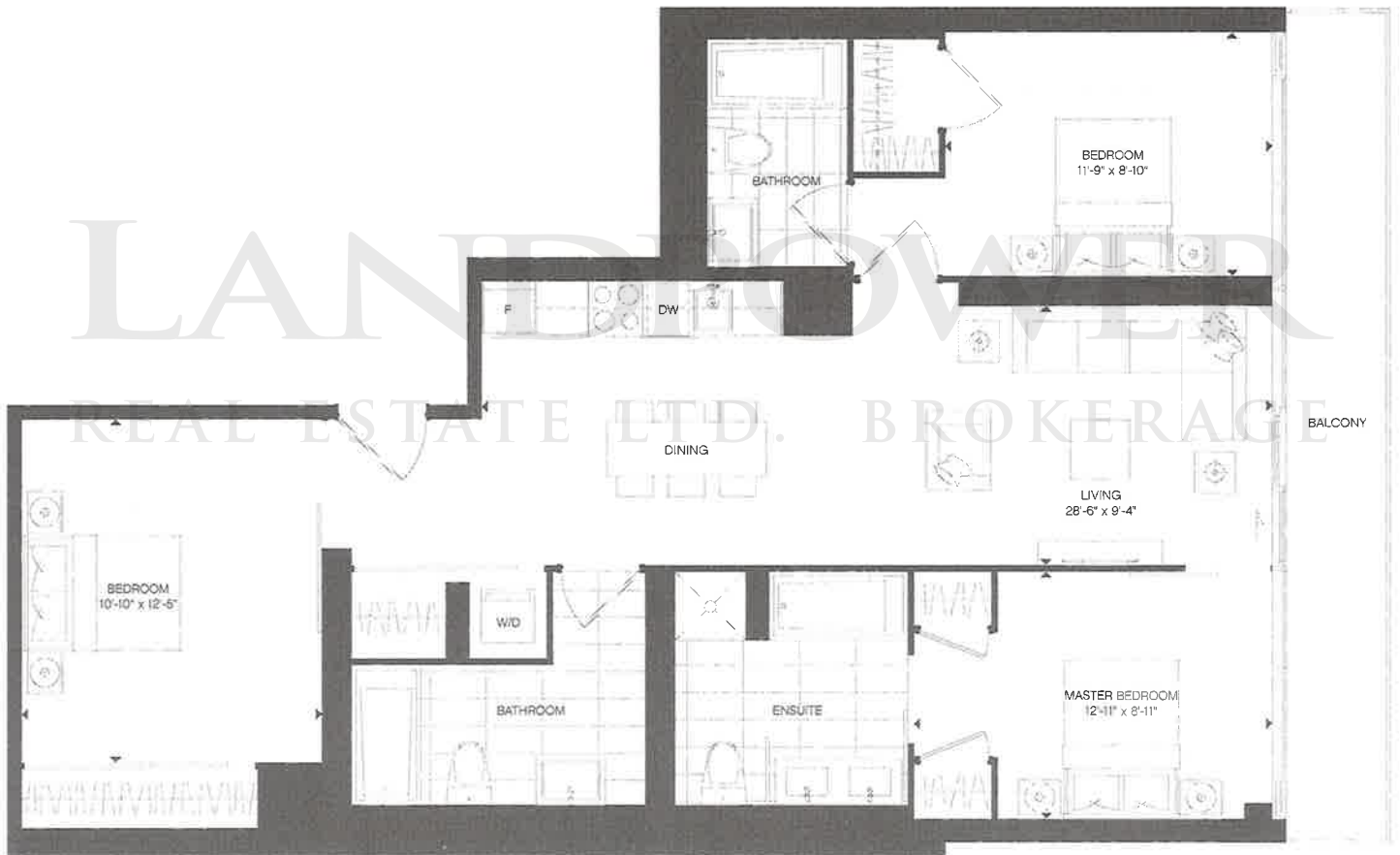
SUITE 1,054 SQ.FT. + 221 SQ.FT. BALCONY



CHATEAU

THREE BEDROOM 1,207 SQ.FT.

SUITE 1,100 SQ.FT. + 107 SQ.FT. BALCONY



BUILDING FEATURES

The ultimate luxury is found in classic design. **Halo** stands proudly on Yonge Street, sophisticated and refined. Designed by Peter Clewes of architectsAlliance, the sleek 42-storey tower rises from a defined podium, set back to reveal a historic clock tower. **Halo** residents will enjoy an array of entertainment, dining, shopping and cultural opportunities, just outside their front door and with subway stations in close proximity, you'll be able to get anywhere you want, when you want.

SUITE FEATURES

- 9' smooth ceilings
 - Oversized, insulated double-glazed windows
 - Choice of designer selected laminate flooring throughout
 - Contemporary open-concept kitchen with stainless steel appliances
 - Choice of granite or quartz countertops in kitchen
- Marble countertops in master bathroom
 - In-suite stacked washer/dryer
 - Communication system in lobby allowing visitors direct contact with your suite
 - In-suite thermostat controlled heating and air conditioning

AMENITIES

Halo amenities offer residents spaces to entertain, mingle and relax, including:

- 24/7 Concierge
 - Lounge with separate dining and hosting kitchen
 - State of the art fitness centre and wellness space with yoga/stretch room
 - Media/Theatre room
- Landscaped outdoor terrace with BBQ
 - Refreshing outdoor pool
 - Billiard room
 - Guest Suite

Model	Sq.Ft.	View	Opening Price	Description
1 Bedroom				
Vega	450	W	\$379,900	1 Bedroom and Study with Balcony
Cadix	465	W	TBD	1 Bedroom with Balcony
Tango	465	W	TBD	1 Bedroom with Balcony
Zenith	525	W	\$409,900	1 Bedroom with Balcony
Flora	530	W	\$413,900	1 Bedroom with Balcony
1 Bedroom and Den				
Celeste	508	N	TBD	1 Bedroom and Den with Balcony
Medicis	510	N	TBD	1 Bedroom and Den with Balcony
2 Bedroom				
Lumière	620	E	TBD	2 Bedroom with Balcony
Luxor	670	NE	TBD	Corner 2 Bedroom with 2 Bathroom and Balcony
Ellipse	680	SW	TBD	Corner 2 Bedroom with 2 Bathrooms and Balcony
Equinox	682	E	\$539,900	2 Bedroom with 2 Bathrooms and Balcony
Harmonie	685	E	\$539,900	2 Bedroom with 2 Bathrooms and Balcony
Crystal	685	S	TBD	2 Bedroom with 2 Bathrooms and Balcony
Jupiter	700	SE	TBD	Corner 2 Bedroom with 2 Bathrooms and Balcony
Charisma	710	NW	\$579,900	2 Bedroom with 2 Bathrooms and Balcony
Massena	866	W	\$669,900	2 Bedroom and Study with 2 and a half Bathrooms and Balcony
3 Bedroom				
Infinity	1054	E	TBD	Corner 3 Bedroom with 3 Bathrooms and Balcony
Chateau	1100	E	TBD	3 Bedroom with 3 Bathrooms and Balcony

*\$1,000 premium per floor

Deposit Structure	Occupancy Date	Maintenance Fees/Taxes	Parking & Locker
\$20,000 on signing Balance to 10% in 60 days 5% in 180 days 210 days 5% in 240 days 450 days 5% on Occupancy	Estimated November 29, 2019	\$0.59 per sq. ft. Hydro & water individually metred Tax approximately 1% of the purchase price HST included in purchaser price	Parking 3 Bedroom - \$75,000 2 Bedroom - Waitlist Locker Waitlist