

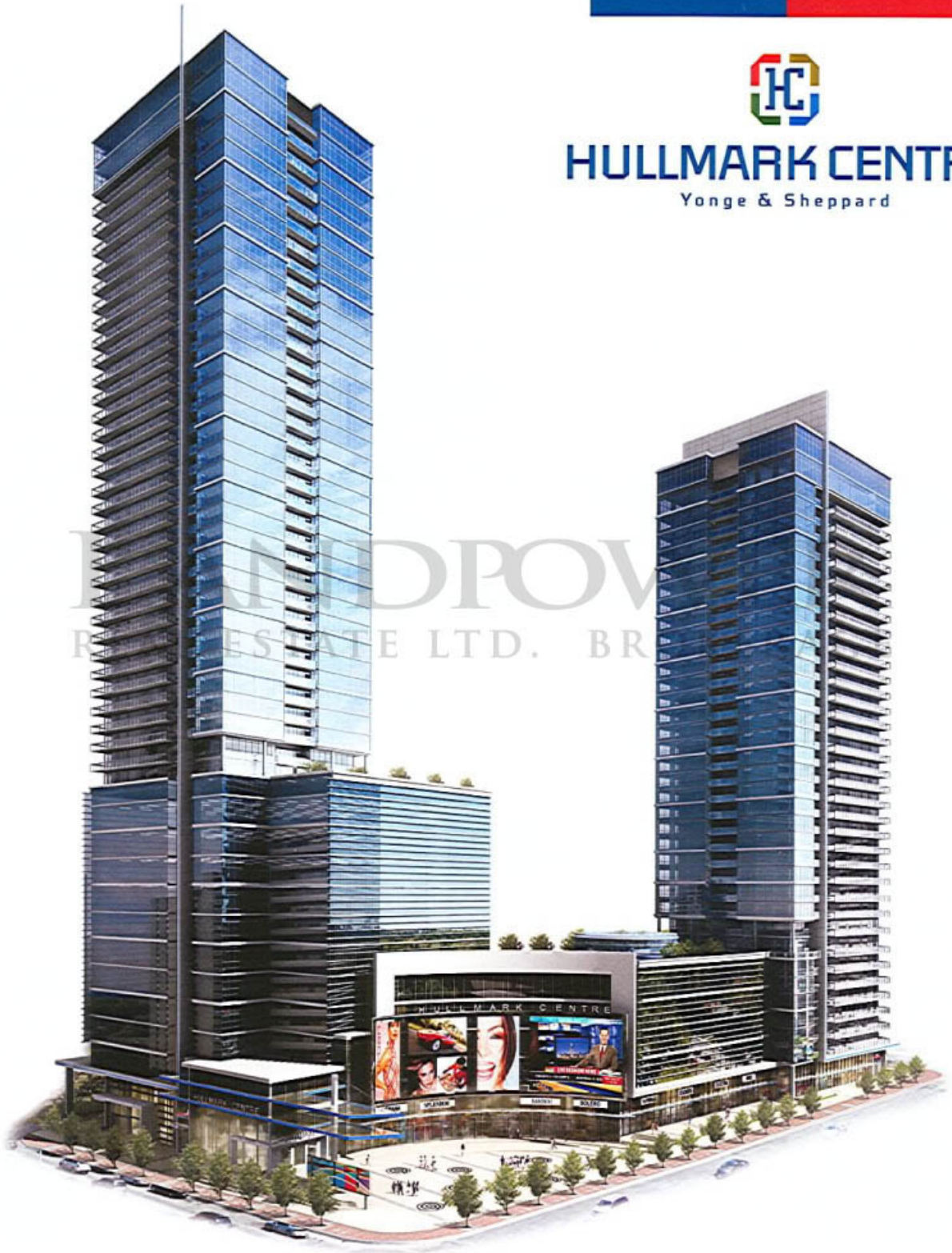
HULLMARK

TRIDEL



HULLMARK CENTRE

Yonge & Sheppard



POV
ESTATE LTD. BR



Hullmark Centre Lobby



The Ground Floor



The Ground Floor Plan



The Grand Plaza



LEGEND

- | | | | |
|-----------------------------|-------------------------|------------------------------|--|
| 1. Sundeck | 9. Media Room | 17. Boardroom | 23. Office Building With
5 Sheppard Avenue East
Residences Above |
| 2. Swimming Pool | 10. Fireplace Lounge | 18. Kitchen | 24. Condominium
Residences 2 Annedale Drive |
| 3. Outdoor Cabanas | 11. Women's Change Room | 19. Bar | |
| 4. Outdoor Dining Area | 12. Men's Change Room | 20. Saunas | |
| 5. Hot Tub | 13. Whirlpool | 21. Steam Room | |
| 6. Outdoor Fireplace lounge | 14. Fitness Centre | 22. Axial Pavilion
Garden | |
| 7. Dining/Cards Room | 15. Fitness Centre | | |
| 8. Billiards Room | 16. Theatre | | |

Some features may vary by suite design. *Prices and specifications subject to change without notice. Illustrations are artists' concepts. Sizes and specifications are subject to change without notice. Furniture is displayed for illustration purposes only and does not necessarily reflect the electrical plan for the suite. Suites are sold unfurnished. See sales representative for details. Tridel®, Tridel Built for Life®, and Tridel Built Green. Built For Life.® are registered trademarks of Tridel and used under license. ©Tridel 2010. All rights reserved. E. & O.E. September 8, 2010



Prices & Floorplans

1 Bedroom Tower Collection

SUITE TYPE	PRICED FROM*
<u>1A</u>	SOLD OUT!
<u>1B</u>	SOLD OUT!
<u>1C+D</u>	SOLD OUT!

Tentative Occupancy Summer 2012

2 Bedroom Tower Collection

SUITE TYPE	PRICED FROM*	SQUARE FOOTAGE (APPROXIMATE)*	MAINTENANCE (MONTHLY ESTIMATED)*	PROPERTY TAX (MONTHLY ESTIMATED)*
<u>2Q</u>	SOLD OUT!	-	-	-
<u>2B</u>	SOLD OUT!	-	-	-
<u>2BR</u>	SOLD OUT!	-	-	-
<u>2C</u>	SOLD OUT!	922	\$396	\$360
<u>2C+D</u>	SOLD OUT!	-	-	-
<u>2P</u>	\$524,500	940	\$404	\$374
<u>2U</u>	SOLD OUT!	-	-	-

Tentative Occupancy Summer 2012

Signature Collection

SUITE TYPE	PRICED FROM*	SQUARE FOOTAGE (APPROXIMATE)*	MAINTENANCE (MONTHLY ESTIMATED)*	PROPERTY TAX (MONTHLY ESTIMATED)*
<u>2F+D</u>	\$908,000	1227	\$552	\$647
<u>2H</u>	\$1,445,000	2147	\$924	\$1030
<u>2K</u>	\$1,605,000	2272	\$977	\$1143
<u>2E+D</u>	SOLD OUT!	-	-	-
<u>2G+D</u>	SOLD OUT!	-	-	-

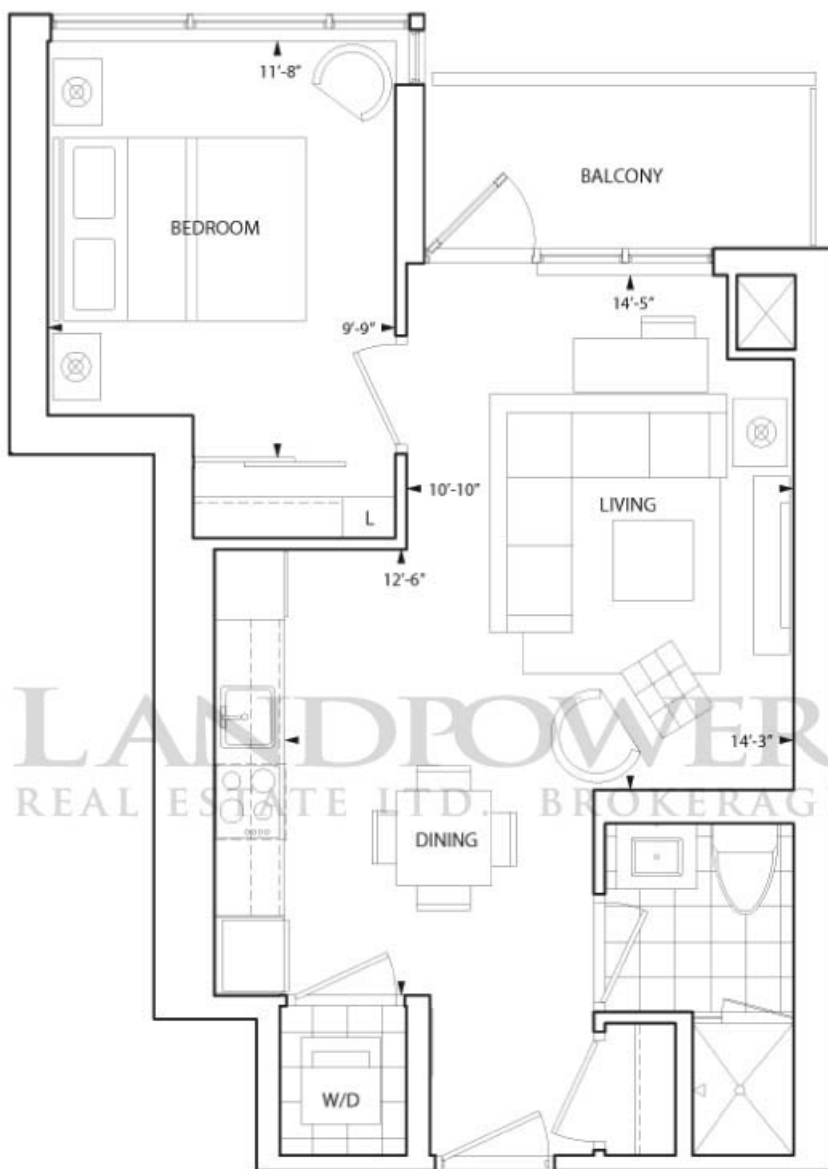
Tentative Occupancy Summer 2012



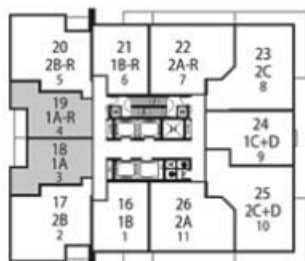
HULLMARK CENTRE

Yonge & Sheppard

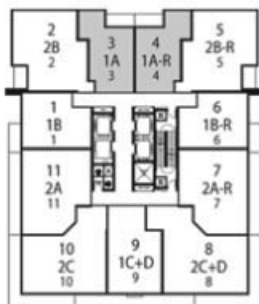
Suite 1A Sold Out



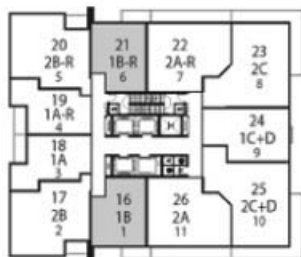
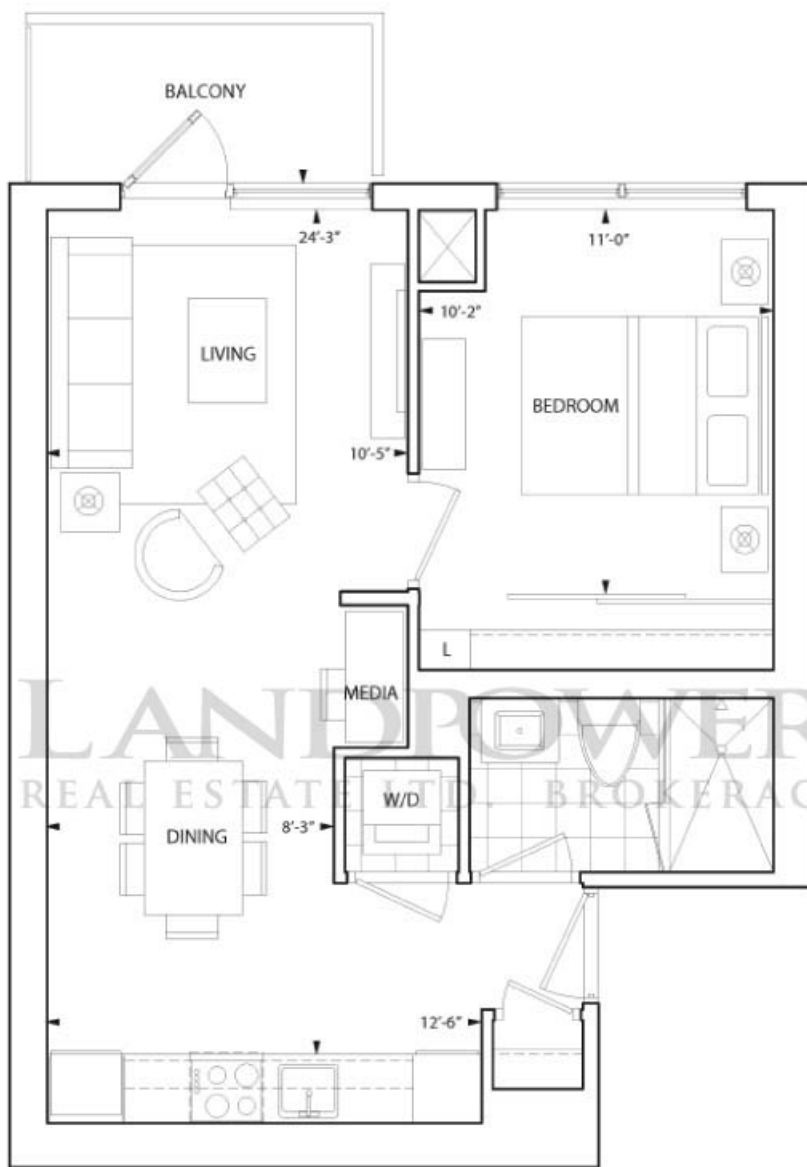
LANDPOWER
REAL ESTATE LTD. BROKERAGE



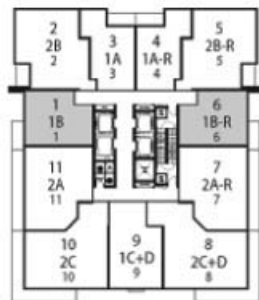
TYPICAL FLOORPLAN
NORTH TOWER
5 SHEPPARD AVENUE EAST



TYPICAL FLOORPLAN
SOUTH TOWER
2 ANN DALE DRIVE



TYPICAL FLOORPLAN
NORTH TOWER
5 SHEPPARD AVENUE EAST



TYPICAL FLOORPLAN
SOUTH TOWER
2 ANNDAL DRIVE

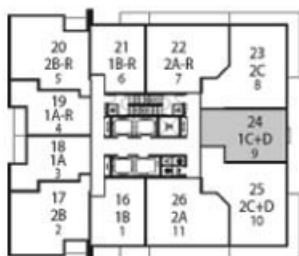
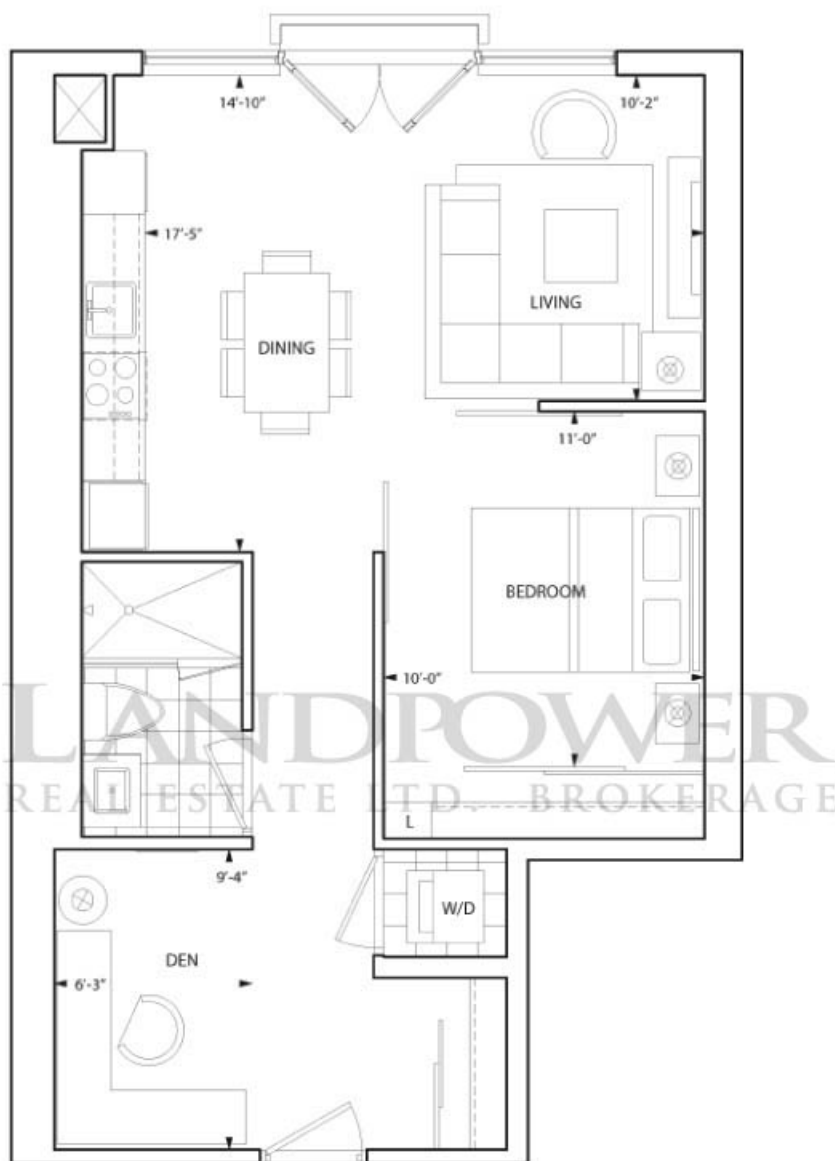


HULLMARK CENTRE

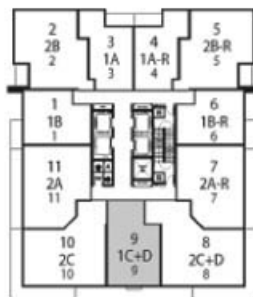
Yonge & Sheppard

Suite 1C+D

Sold Out

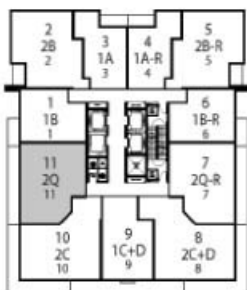
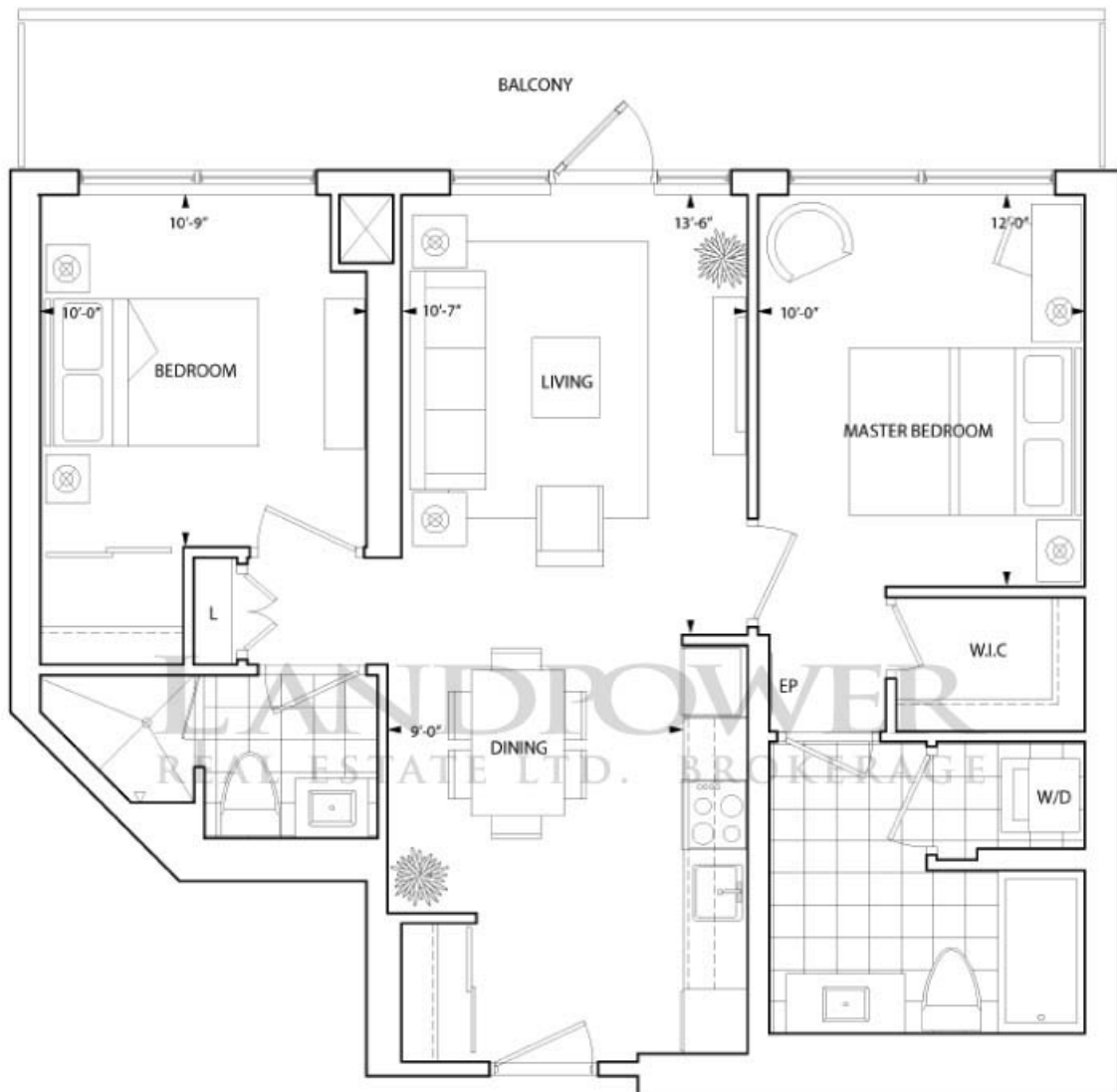


TYPICAL FLOORPLAN
NORTH TOWER
5 SHEPPARD AVENUE EAST



TYPICAL FLOORPLAN
SOUTH TOWER
2 ANNDALE DRIVE

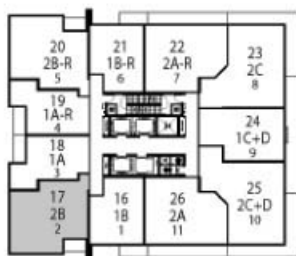
Some features may vary by suite design. *Prices and specifications subject to change without notice. Illustrations are artists' concepts. Sizes and specifications are subject to change without notice. Furniture is displayed for illustration purposes only and does not necessarily reflect the electrical plan for the suite. Suites are sold unfurnished. See sales representative for details. Tridel®, Tridel Built for Life®, and Tridel Built Green. Built For Life.® are registered trademarks of Tridel and used under license. ©Tridel 2010. All rights reserved. E. & O.E. September 8, 2010



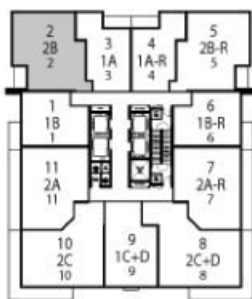
TYPICAL FLOORPLAN
SOUTH TOWER
2 ANND ALE DRIVE



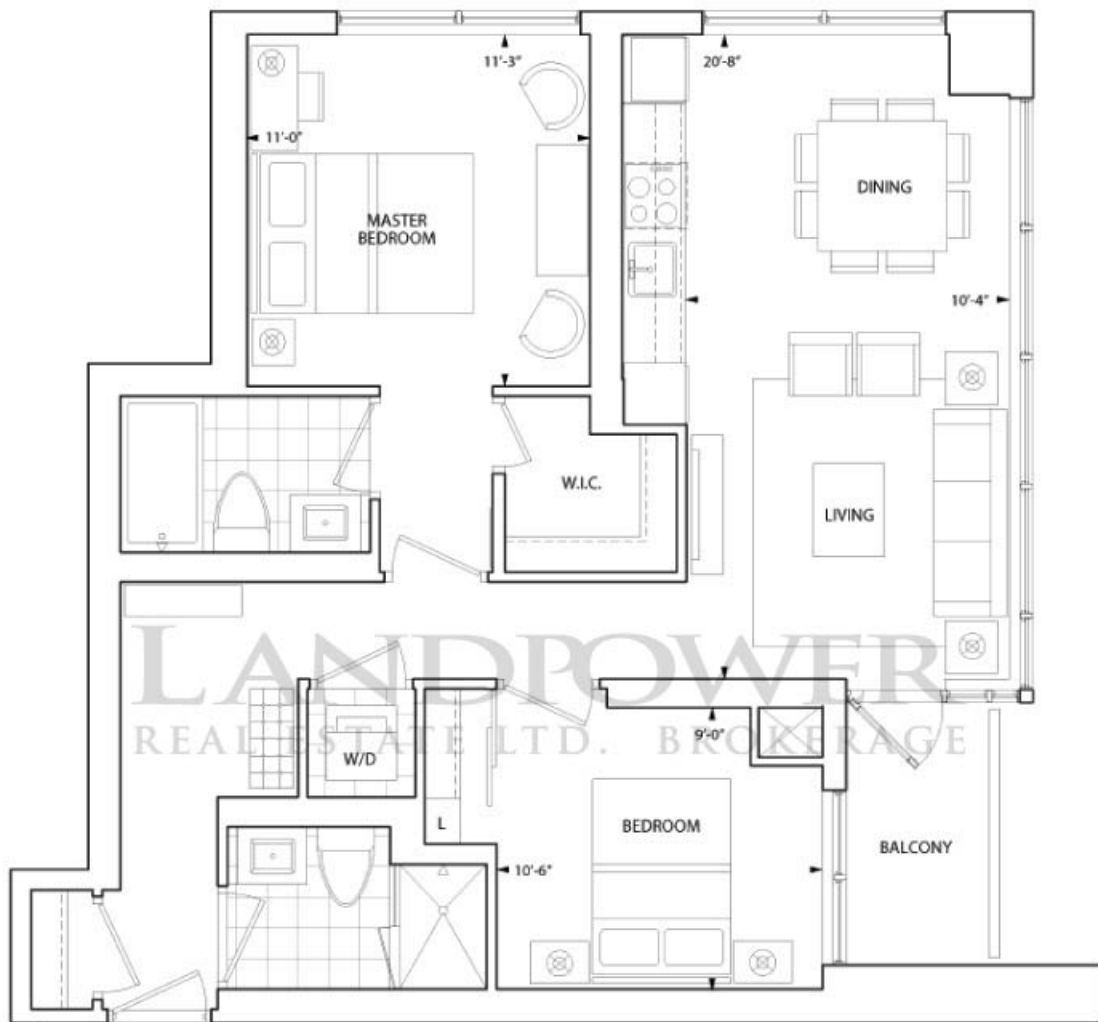
CORNER SUITE



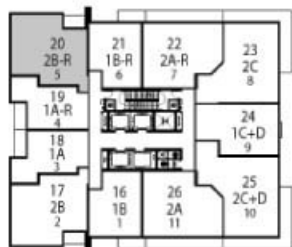
TYPICAL FLOORPLAN
NORTH TOWER
5 SHEPPARD AVENUE EAST



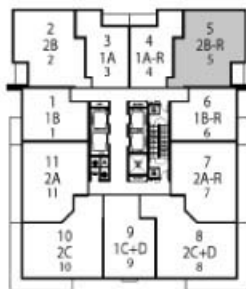
TYPICAL FLOORPLAN
SOUTH TOWER
2 ANNDALE DRIVE



CORNER SUITE



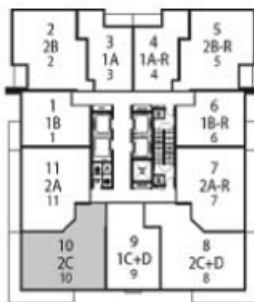
TYPICAL FLOORPLAN
NORTH TOWER
5 SHEPPARD AVENUE EAST



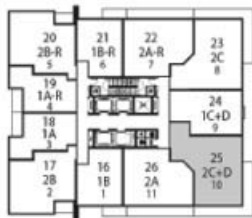
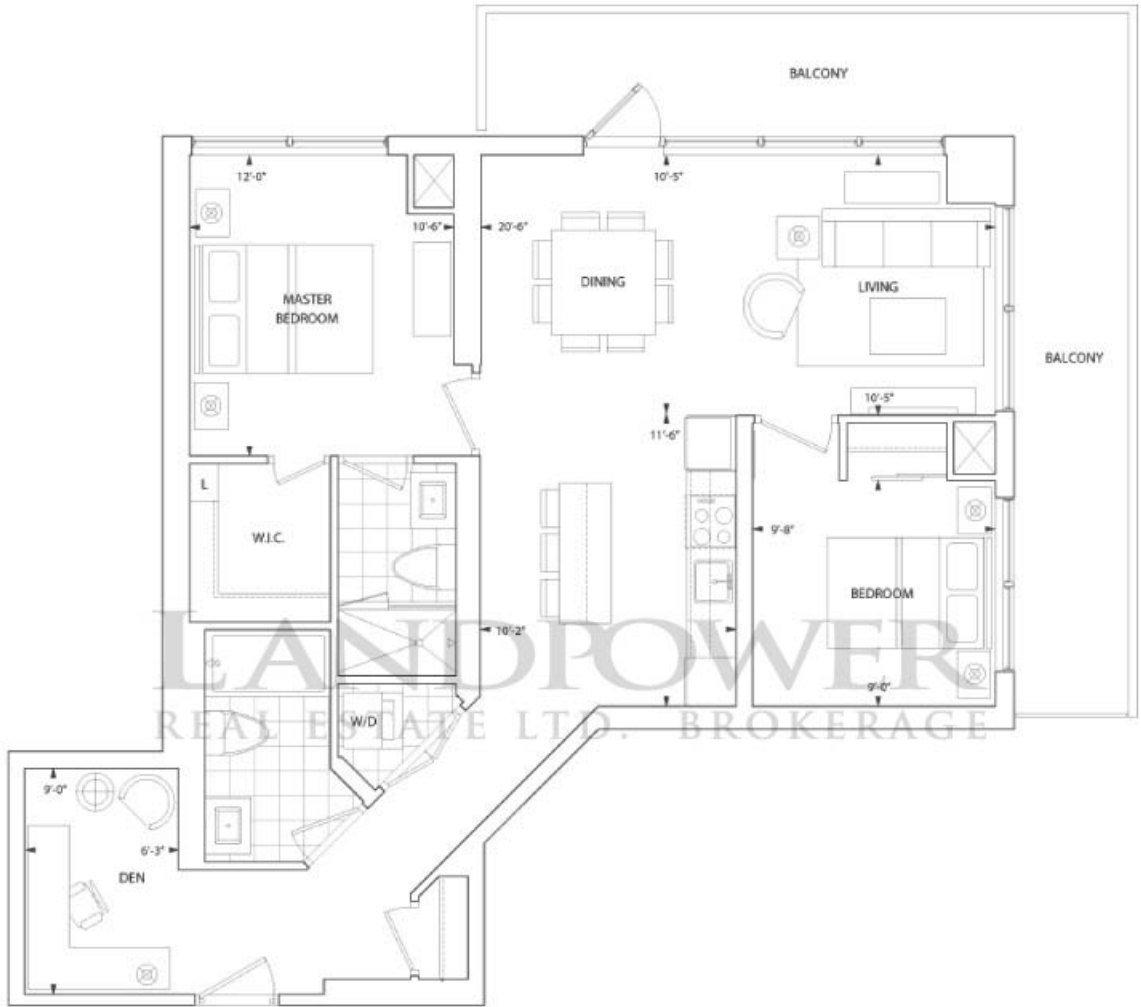
TYPICAL FLOORPLAN
SOUTH TOWER
2 ANNDALE DRIVE



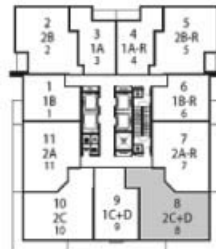
TYPICAL FLOORPLAN
NORTH TOWER
5 SHEPPARD AVENUE EAST



TYPICAL FLOORPLAN
SOUTH TOWER
2 ANDALE DRIVE



TYPICAL FLOORPLAN
NORTH TOWER
5 SHEPPARD AVENUE EAST



TYPICAL FLOORPLAN
SOUTH TOWER
2 ANN DALE DRIVE



HULLMARK CENTRE

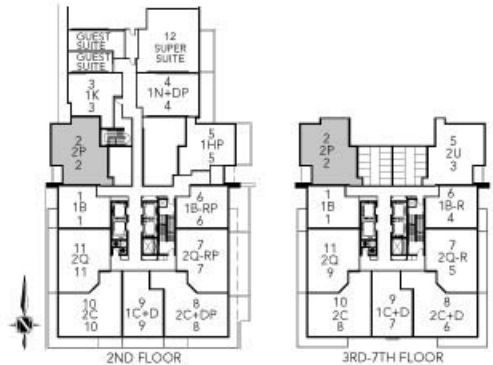
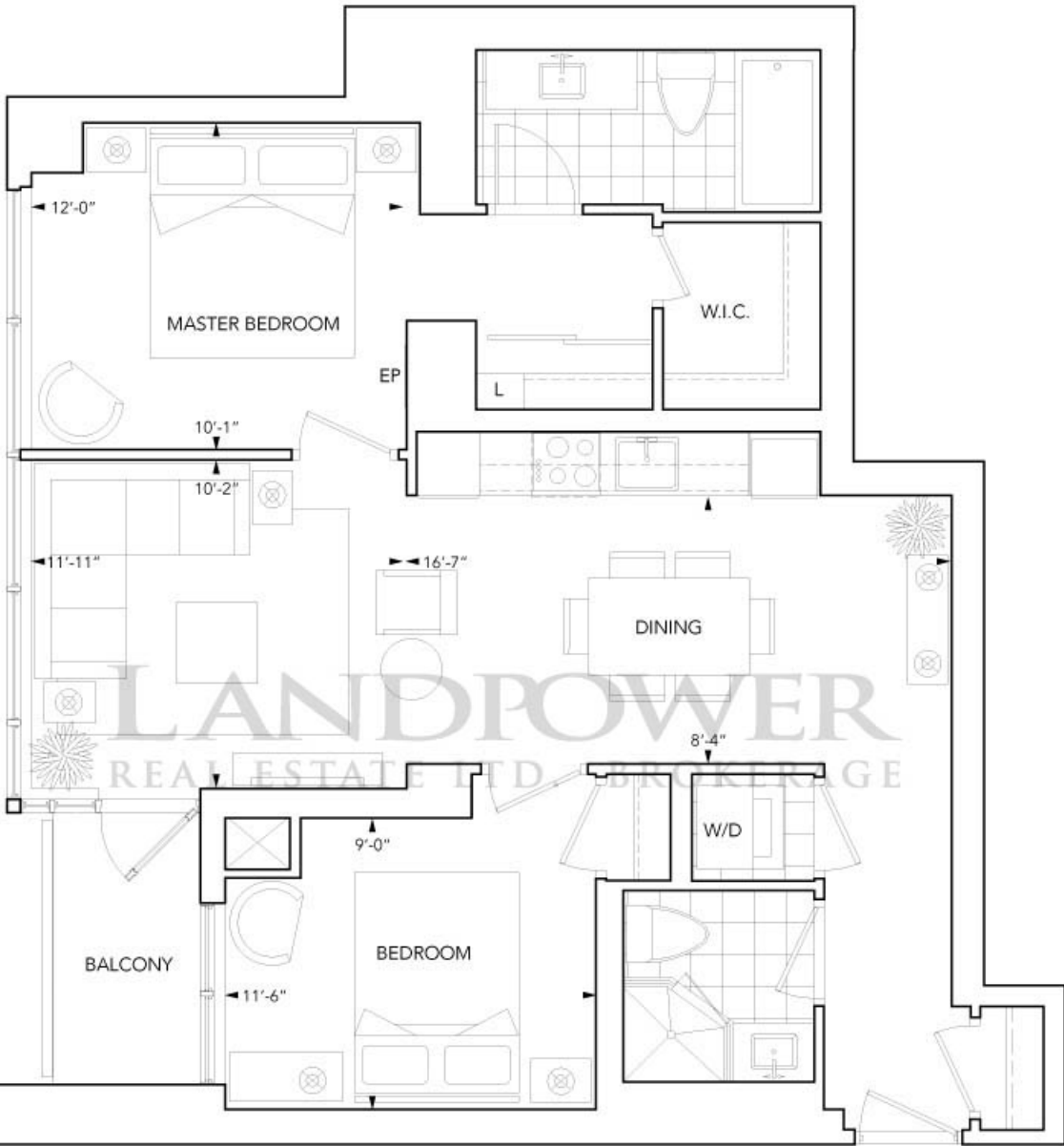
Yonge & Sheppard

Suite 2P

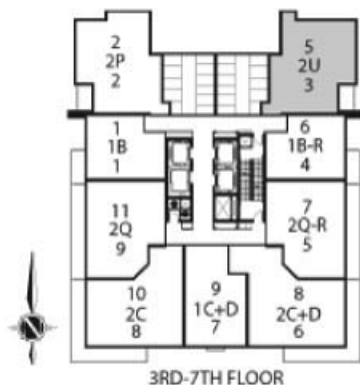
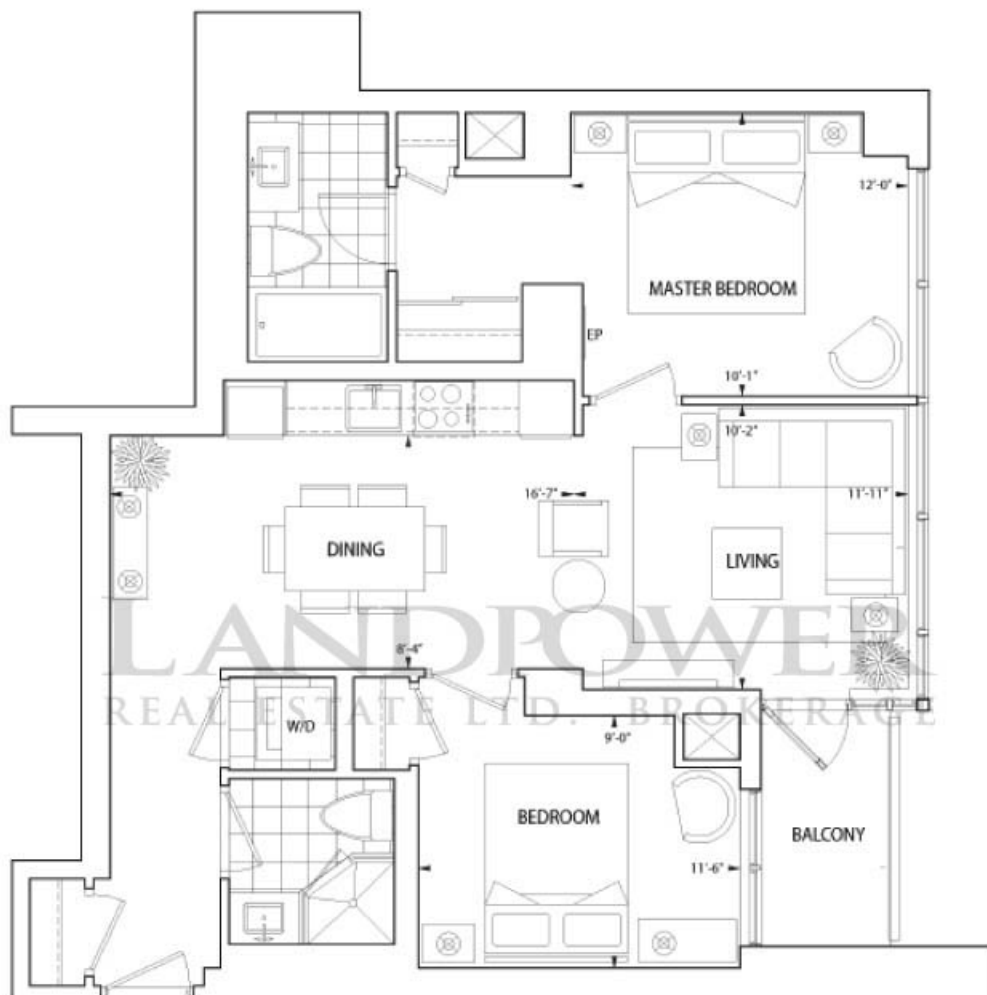
Bedrooms and Balcony

Starting from \$524,500* ~ 940 sq.ft.*

Tentative Occupancy Summer 2012



Some features may vary by suite design. *Prices and specifications subject to change without notice. Illustrations are artists' concepts. Sizes and specifications are subject to change without notice. Furniture is displayed for illustration purposes only and does not necessarily reflect the electrical plan for the suite. Suites are sold unfurnished. See sales representative for details. Tridel®, Tridel Built for Life®, and Tridel Built Green. Built For Life.® are registered trademarks of Tridel and used under license. ©Tridel 2010. All rights reserved. E. & O.E. September 8, 2010





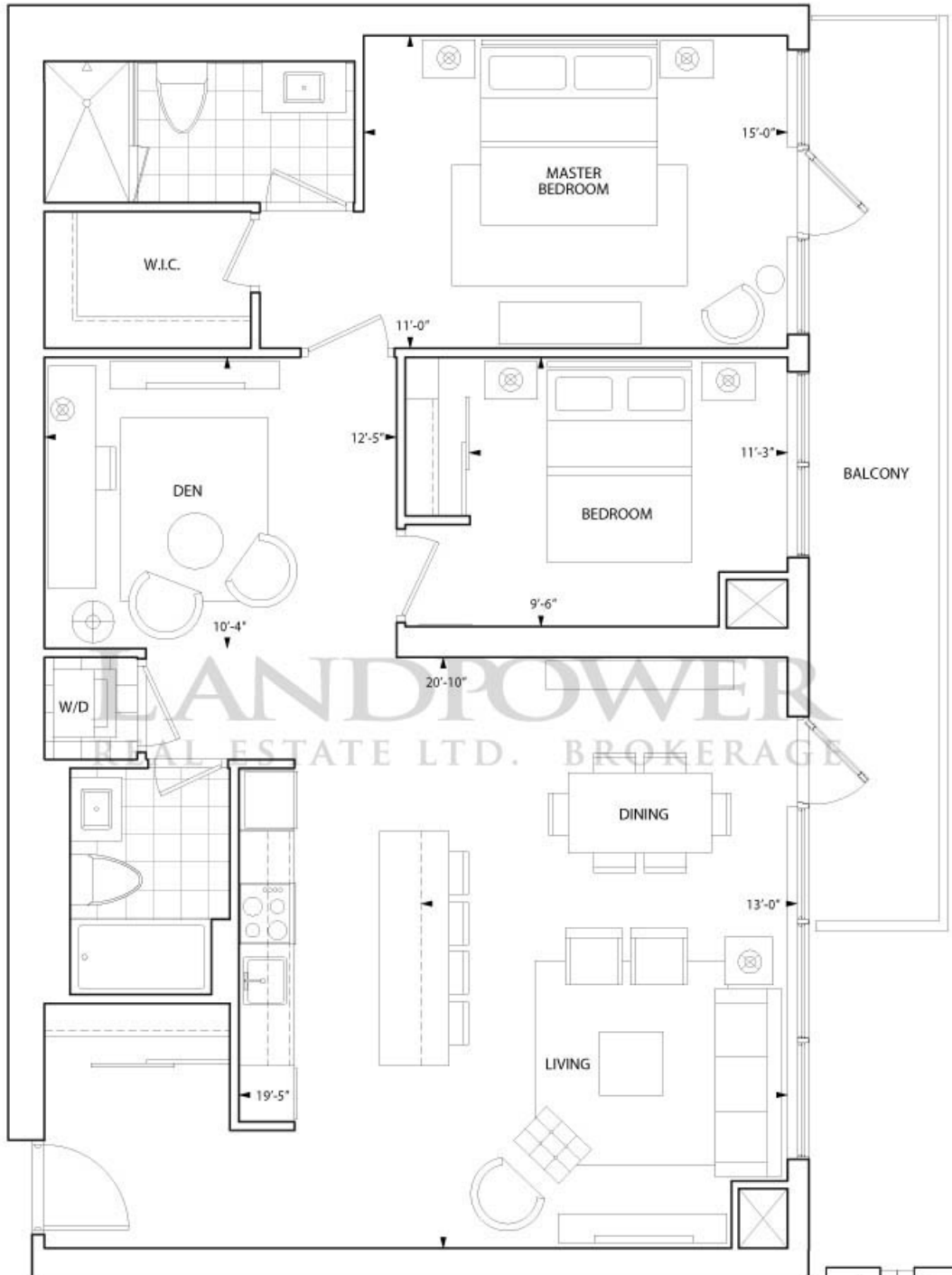
HULLMARK CENTRE
Yonge & Sheppard

Suite 2F+D

Bedrooms and Balcony

Starting from \$908,000* ~ 1,227 sq.ft.*

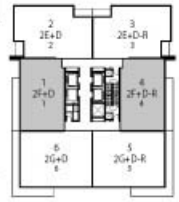
Tentative Occupancy Summer 2012



LANDPOWER REAL ESTATE LTD. BROKERAGE



4TH - 4TH FLOOR PLAN NORTH TOWER 5 SHEPPARD AVENUE EAST



3RD - 34TH FLOOR PLAN SOUTH TOWER 2 ANNDALE DRIVE

Some features may vary by suite design. *Prices and specifications subject to change without notice. Illustrations are artists' concepts. Sizes and specifications are subject to change without notice. Furniture is displayed for illustration purposes only and does not necessarily reflect the electrical plan for the suite. Suites are sold unfurnished. See sales representative for details. Tridel®, Tridel Built for Life®, and Tridel Built Green. Built For Life.® are registered trademarks of Tridel and used under license. ©Tridel 2010. All rights reserved. E. & O.E. July 1, 2010



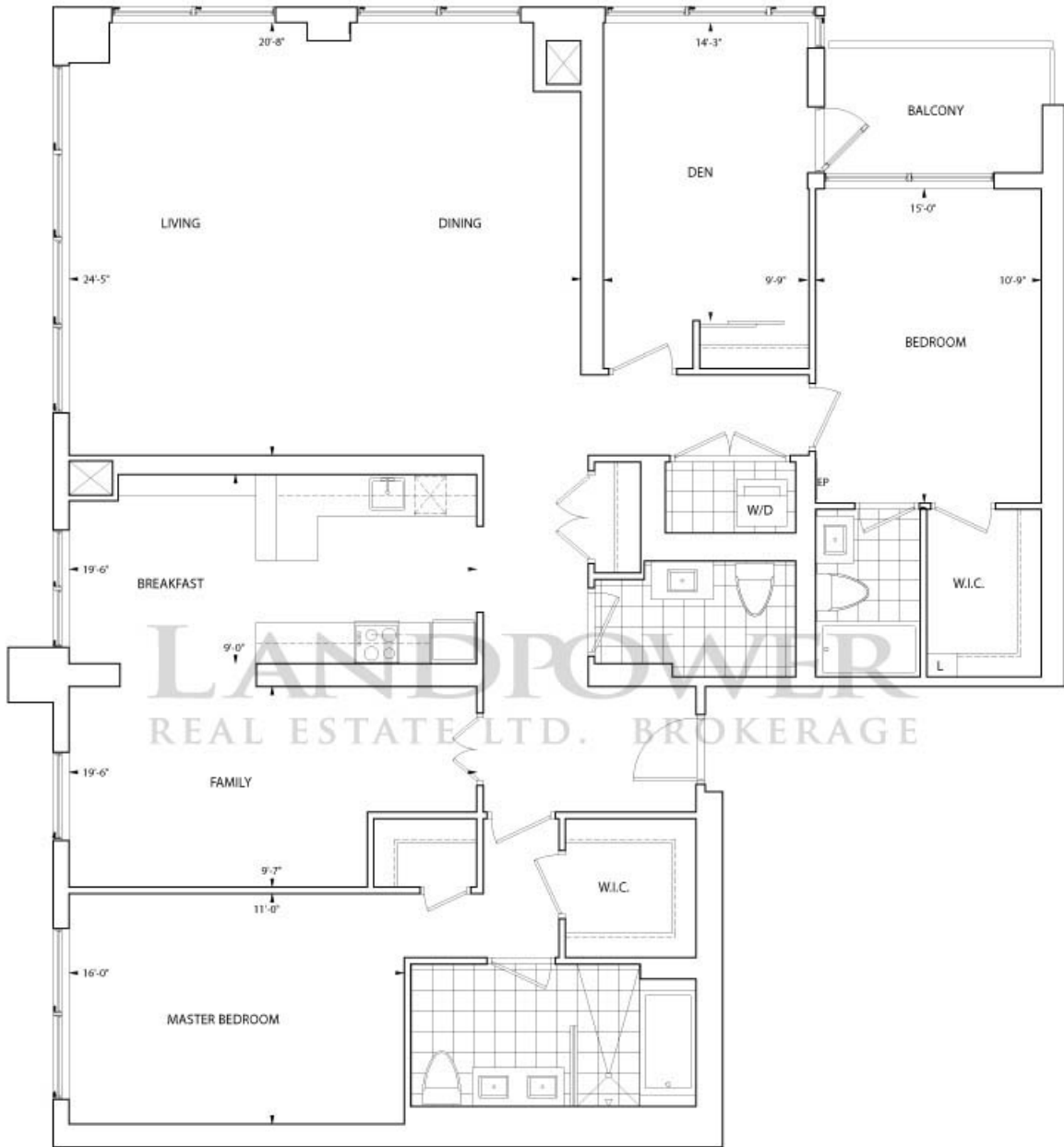
HULLMARK CENTRE
Yonge & Sheppard

Suite 2H

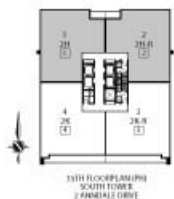
Bedrooms and Balcony

Starting from \$1,445,000* ~ 2,147 sq.ft.*

Tentative Occupancy Summer 2012



LANDPOWER
REAL ESTATE LTD. BROKERAGE



Some features may vary by suite design. *Prices and specifications subject to change without notice. Illustrations are artists' concepts. Sizes and specifications are subject to change without notice. Furniture is displayed for illustration purposes only and does not necessarily reflect the electrical plan for the suite. Suites are sold unfurnished. See sales representative for details. Tridel®, Tridel Built for Life®, and Tridel Built Green. Built For Life.® are registered trademarks of Tridel and used under license. ©Tridel 2010. All rights reserved. E. & O.E. July 1, 2010



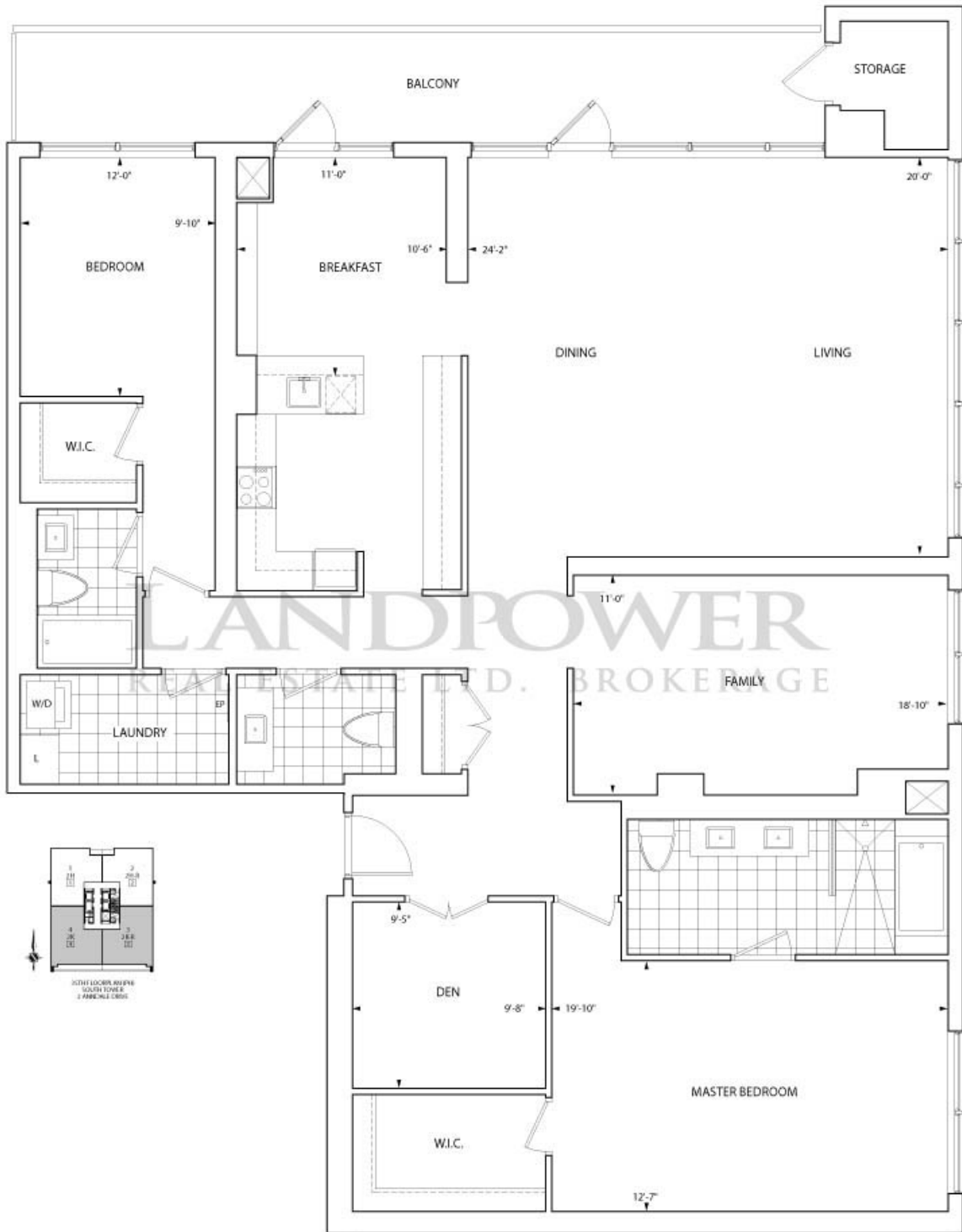
HULLMARK CENTRE
Yonge & Sheppard

Suite 2K

Bedrooms and Balcony

Starting from \$1,605,000* ~ 2,272 sq.ft.*

Tentative Occupancy Summer 2012



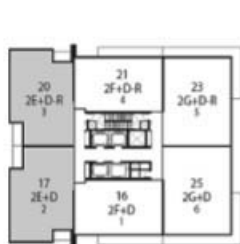
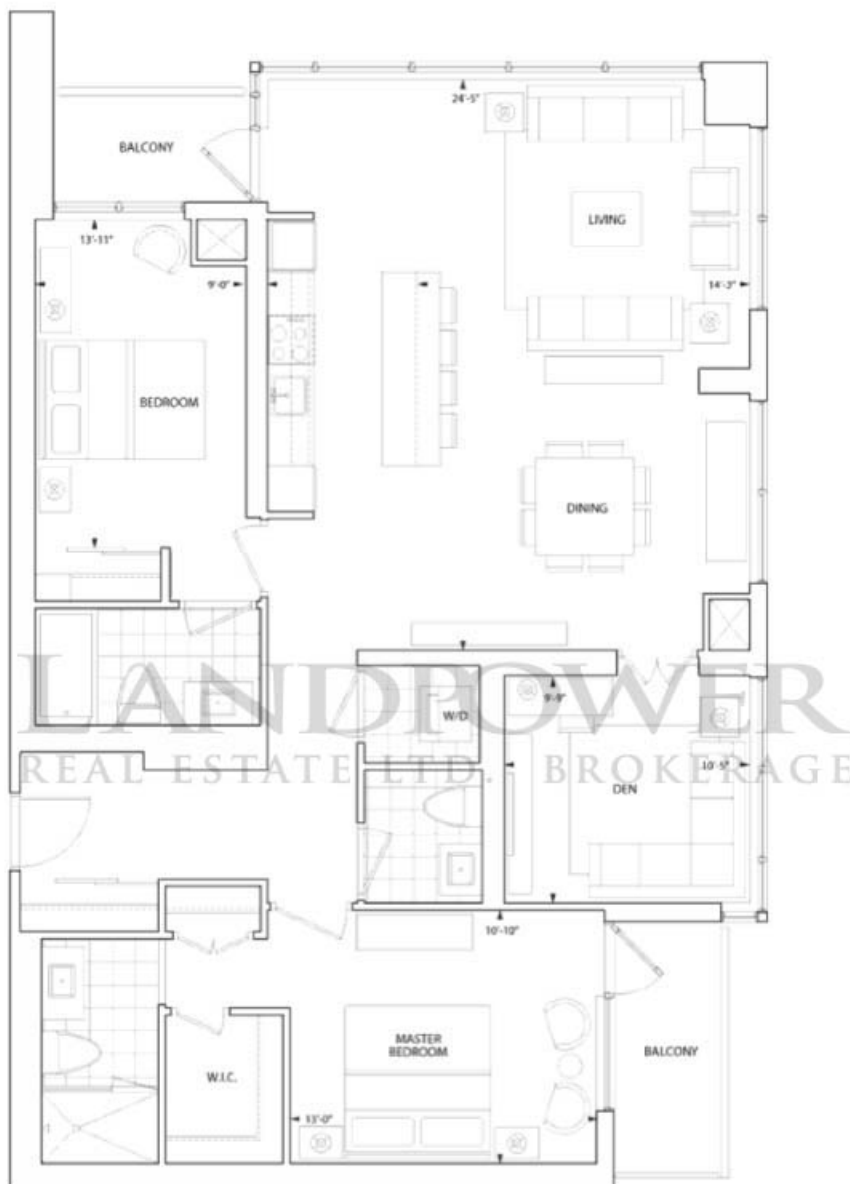
Some features may vary by suite design. *Prices and specifications subject to change without notice. Illustrations are artists' concepts. Sizes and specifications are subject to change without notice. Furniture is displayed for illustration purposes only and does not necessarily reflect the electrical plan for the suite. Suites are sold unfurnished. See sales representative for details. Tridel®, Tridel Built for Life®, and Tridel Built Green. Built For Life.® are registered trademarks of Tridel and used under license. ©Tridel 2010. All rights reserved. E. & O.E. July 1, 2010



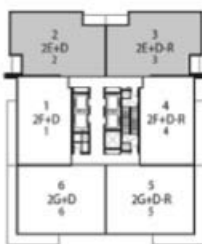
HULLMARK CENTRE

Yonge & Sheppard

Suite 2E+D
Sold Out



46TH - 48TH FLOORPLAN
NORTH TOWER
5 SHEPPARD AVENUE EAST

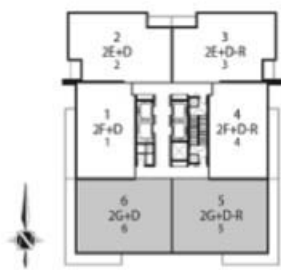


33RD - 34TH FLOORPLAN
SOUTH TOWER
2 ANNDALE DRIVE

Some features may vary by suite design. *Prices and specifications subject to change without notice. Illustrations are artists' concepts. Sizes and specifications are subject to change without notice. Furniture is displayed for illustration purposes only and does not necessarily reflect the electrical plan for the suite. Suites are sold unfurnished. See sales representative for details. Tridel®, Tridel Built for Life®, and Tridel Built Green. Built For Life.® are registered trademarks of Tridel and used under license. ©Tridel 2010. All rights reserved. E. & O.E. September 8, 2010

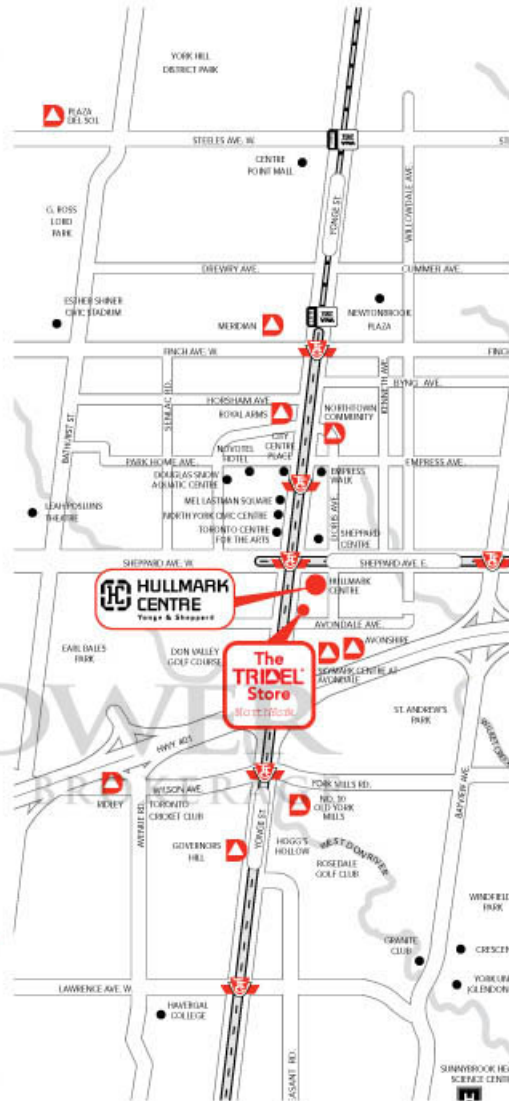


LANDPOWER REAL ESTATE LTD. BROKERAGE



33RD - 34TH FLOOR PLAN
SOUTH TOWER
2 ANNDALE DRIVE

Some features may vary by suite design. *Prices and specifications subject to change without notice. Illustrations are artists' concepts. Sizes and specifications are subject to change without notice. Furniture is displayed for illustration purposes only and does not necessarily reflect the electrical plan for the suite. Suites are sold unfurnished. See sales representative for details. Tridel®, Tridel Built for Life®, and Tridel Built Green. Built For Life.® are registered trademarks of Tridel and used under license. ©Tridel 2010. All rights reserved. E. & O.E. September 8, 2010



Presentation Centre

4679 Yonge Street, North York, ON
Corner of Yonge & Avondale (north of Hwy 401)

Hours

Monday to Thursday: 11am - 7pm
Friday: Closed
Weekends & Holidays: 12pm - 6pm

Telephone

416.733.2883

Email

hullmarkcentre@tridel.com

Built for Life.®

At Tridel we build homes that are Built for Life. This means building for today's lifestyles with an array of leisure and entertainment amenities, building healthy, sustainable communities so you can have superior performance, comfort and quality, and building homes of enduring, lasting value.

Of all the things we've built, your trust is valued the most.

Tridel Condominium Communities across the Greater Toronto Area.



Republic – Toronto
Project of the Year
25 Broadway Ave., east of
Yonge St., north of Eglinton Ave.
416.480.0700



Accolade – North York
1250 Eglinton Ave. East, at
Crowne Plaza Hotel entrance,
north of Eglinton at Wynford
416.385.0305



Ultra Ovation – Mississauga
Burnhamthorpe Rd., west of
Huronario St.
By Appointment: 416.798.1818
TRIDEL DORSAY



James Cooper Mansion – Toronto
Bloor & Sherbourne
Presentation Centre: 2 Carlton St.,
east of Yonge St.
416.596.9888



Grand Triomphe 2 – North York
Yonge St. & Byng Ave.
Presentation Centre: 9 Greenview
Ave. at Finch Ave., west of Yonge St.
416.222.3811



Parc Nuvo at Essex – Etobicoke
**Most Outstanding Highrise Building
Grand Opening**
25 Viking Road West
Dundas St. & Kipling Ave.
416.231.0999



Verve – Toronto
Wellesley St. East, east of Jarvis St.
Presentation Centre: 2 Carlton St.,
east of Yonge St.
416.596.9888



Meridian – North York
9 Greenview Ave.
at Finch Ave., west of Yonge St.,
416.222.3811
TRIDEL HULLMARK



Humberwood – Etobicoke
710 Humberwood Blvd.,
north of Rexdale Blvd.
416.798.1818
TRIDEL HULLMARK



Huntington – Lawrence Park
Project of the Year
1900 Bayview Ave., south of Lawrence
416.485.1900
TRIDEL CONCERT



Metrogate – Scarborough
Community of the Year
Kennedy Rd. across from
Delta Hotel north of the 401
416.293.5535



Renaissance – Richmond Hill
Yonge St., north of Major Mackenzie Dr.
Presentation Centre: 3492 Hwy. 7,
west of Town Centre Blvd.
416.736.9500



Avonshire – North York
4679 Yonge St.,
north of Hwy. 401
416.730.0300



Three Hundred
Front Street West – Toronto
Front St. west and John St.
416.217.0300



Circa – Markham
3492 Hwy. 7, west of
Town Centre Blvd.
905.305.0588
TRIDEL DORSAY



Tridel ranked "Highest in Customer Satisfaction With New Condominium Home Builders in the Greater Toronto Area (GTA)" for a Third Consecutive Year by J.D. Power and Associates 2008 Canadian New Condominium Builder Customer Satisfaction Study™.



Hullmark Centre is a
Built Green. Built For Life™.
Community

As Canada's largest condominium developer, Tridel is committed to being environmental leaders in our industry. We are determined to develop condominium residences that meet the needs of today's homeowners, while safeguarding the well-being of future generations.

tridel.com