

one-bedroom

## Park Suites – 1N

interior area:

505 SF / Suite 03

exterior area:

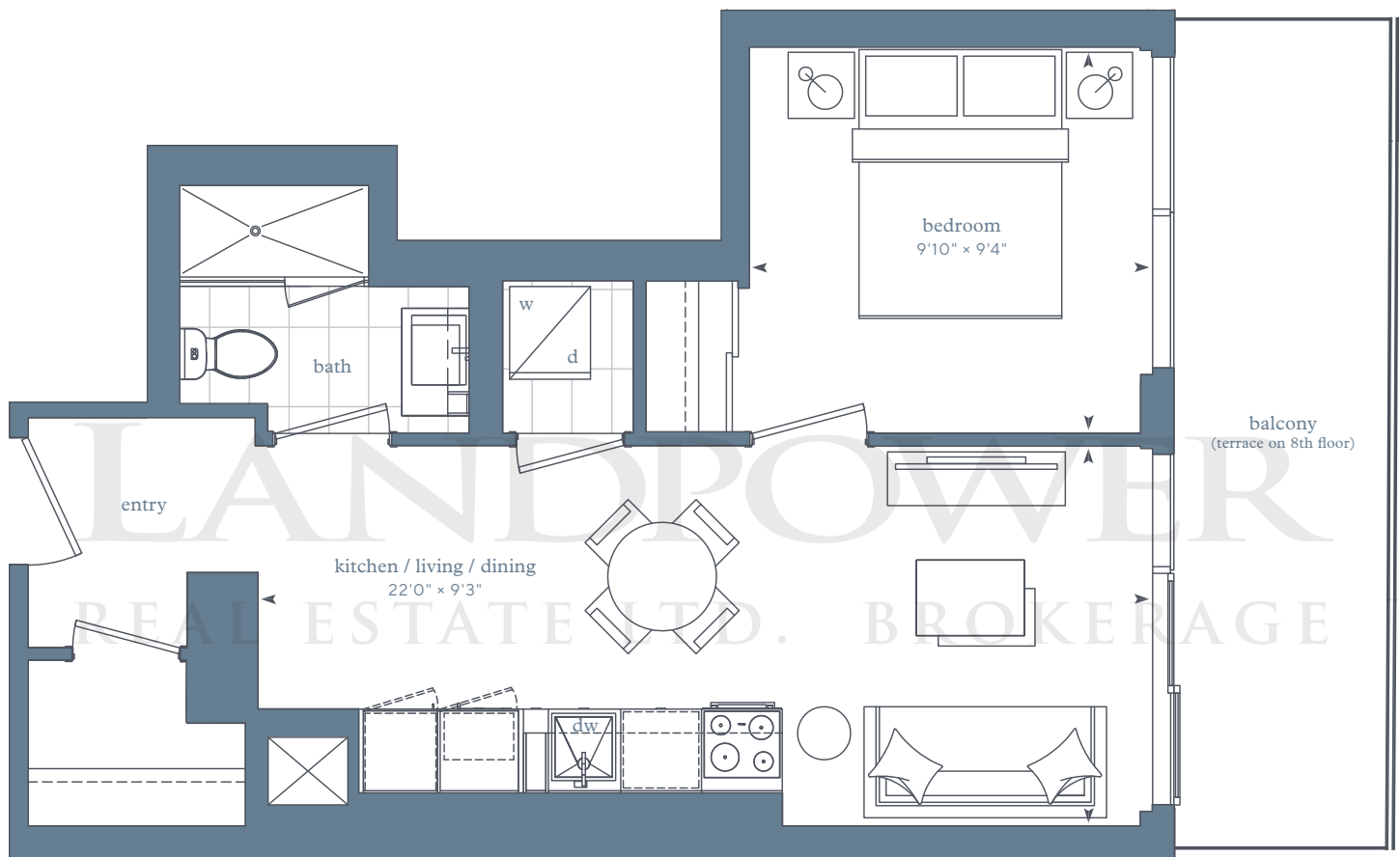
MIN 120 SF

MAX 233 SF

LIVE. PLAY. LAKE.

# LAKE SIDE

RESIDENCES



terrace conditions will require  
curbs and steps to access

Park Suites –  
floor 8



Park Suites –  
floors 9-13



Park Suites –  
floor 14



Any stated areas and/or dimensions shown are approximate only and subject to normal construction variances. Actual usable floor space may vary from any stated or depicted floor area and the unit shall be measured in accordance with the provisions set out in Tarion Builder Bulletin 22. The layout of the suite may be reversed depending on the location of the unit within the project. Any furniture depicted is for illustration purposes only and does not necessarily reflect the fixtures, finishes, appliances, and/or electrical plan of the unit and is not included in the purchase price. Ceiling heights are subject to bulkheads, exposed ducts, dropped ceilings and structural beams, as applicable pursuant to the plans. The view from or through the windows to the exterior cladding of the building and may be partially obstructed by materials affixed to the exterior cladding of the building as part of the architectural design elements and/or interior structural columns that may be required pursuant to the recommendations of the project's engineers. Any and all materials, measurements, dimensions and/or specifications are subject to change without notice. All illustrations are artist's concept only. E. & O. E. April 2018.



one-bedroom

## Park Suites – 1MA

interior area:

516 SF / Suite 19, 12, 08

exterior area:

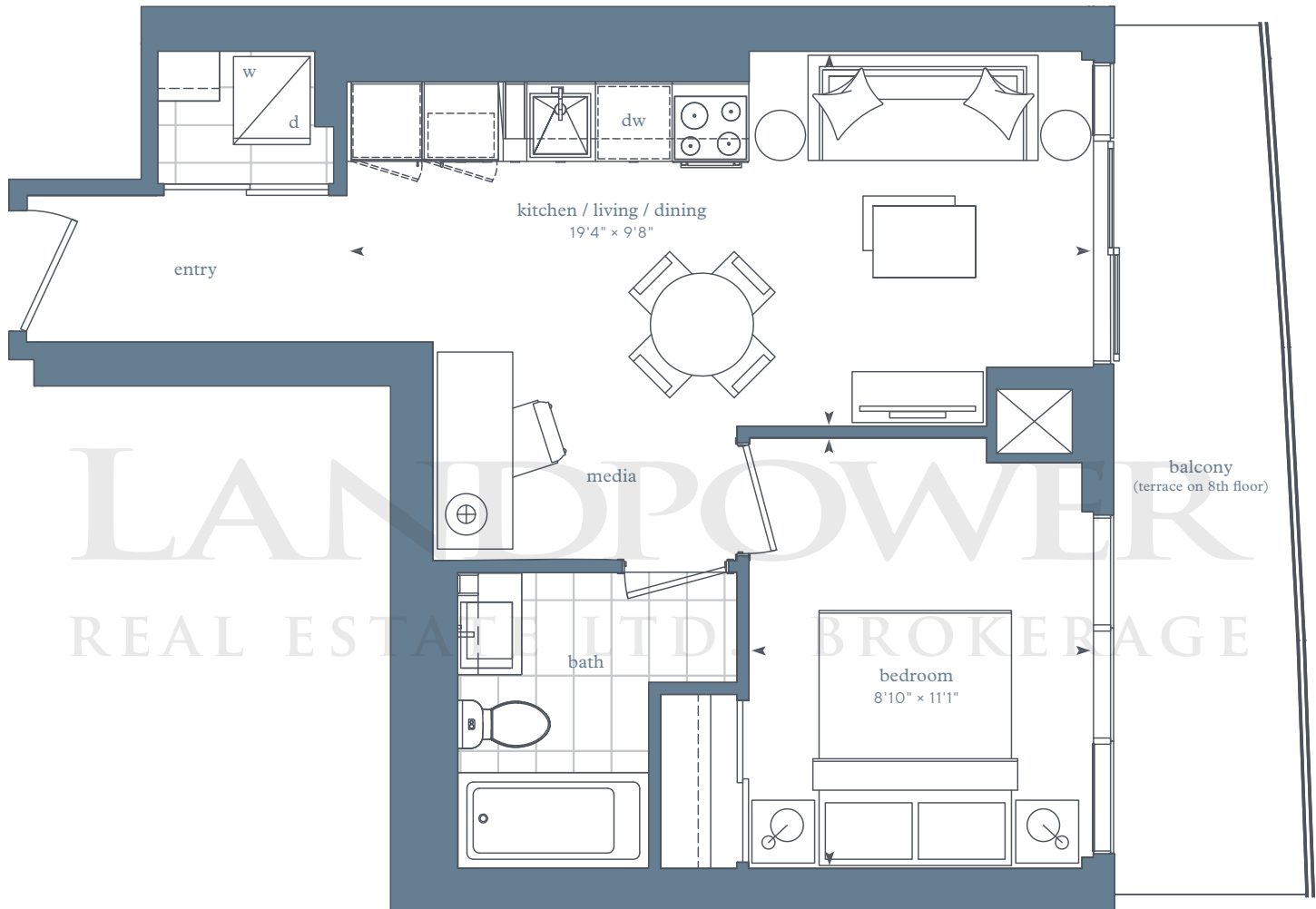
MIN 114 SF

MAX 216 SF

LIVE. PLAY. LAKE.

# LAKE SIDE

RESIDENCES



terrace conditions will require  
curbs and steps to access

Park Suites –  
floor 8



Park Suites –  
floors 9-13



Park Suites –  
floor 14



Park Suites –  
floor 15



Any stated areas and/or dimensions shown are approximate only and subject to normal construction variances. Actual usable floor space may vary from any stated or depicted floor area and the unit shall be measured in accordance with the provisions set out in Tarion Builder Bulletin 22. The layout of the suite may be reversed depending on the location of the unit within the project. Any furniture depicted is for illustration purposes only and does not necessarily reflect the fixtures, finishes, appliances, and/or electrical plan of the unit and is not included in the purchase price. Ceiling heights are subject to bulkheads, exposed ducts, dropped ceilings and structural beams, as applicable pursuant to the plans. The view from or through the windows to the exterior cladding of the building and may be partially obstructed by materials affixed to the exterior cladding of the building as part of the architectural design elements and/or interior structural columns that may be required pursuant to the recommendations of the project's engineers. Any and all materials, measurements, dimensions and/or specifications are subject to change without notice. All illustrations are artist's concept only. E. & O. E. April 2018.



one-bedroom

## Park Suites – 1P

interior area:

521 SF / Suite 04

exterior area:

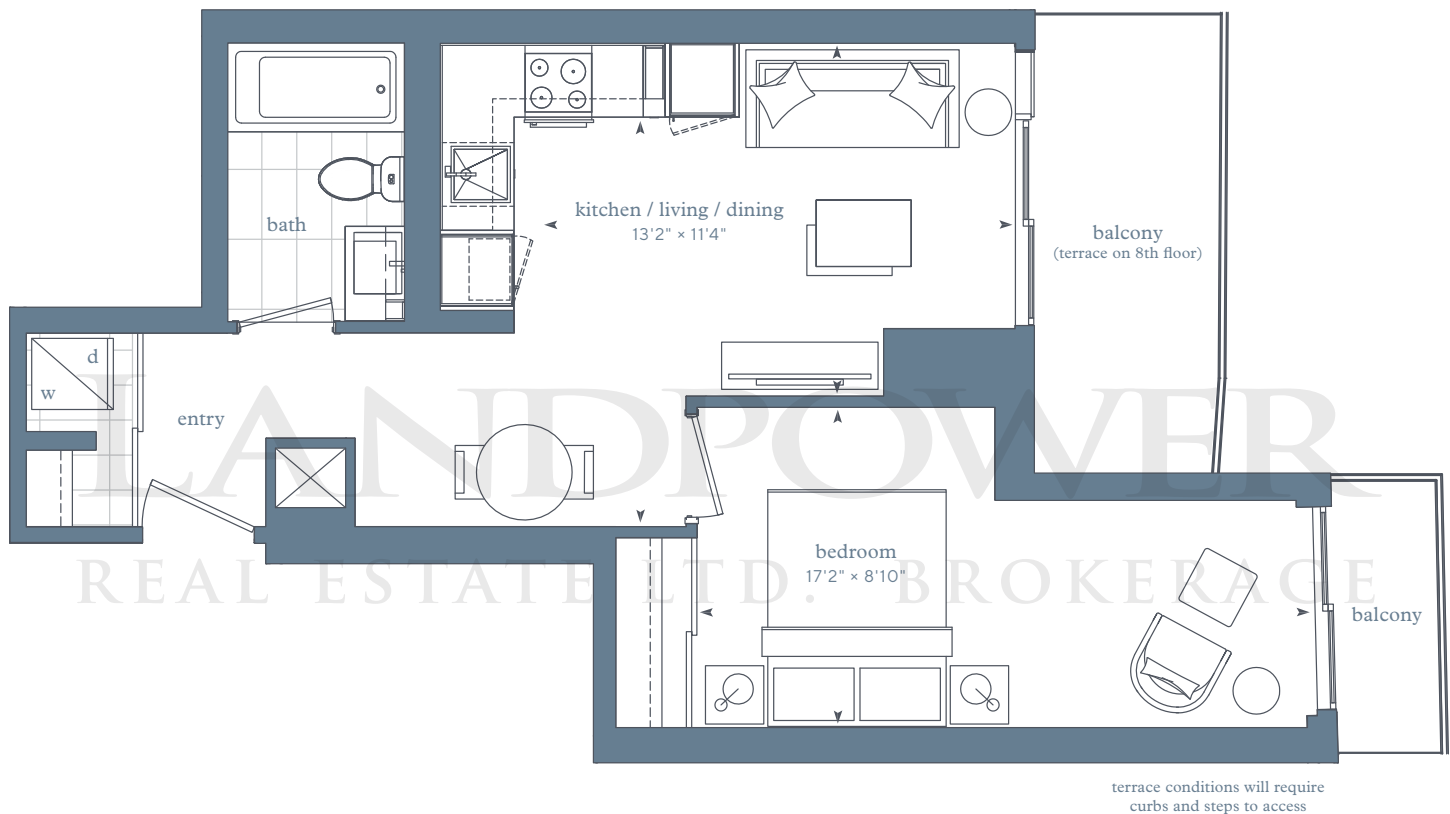
MIN 117 SF

MAX 176 SF

LIVE. PLAY. LAKE.

# LAKE SIDE

RESIDENCES



Park Suites –  
floor 8



Park Suites –  
floors 9-13



Any stated areas and/or dimensions shown are approximate only and subject to normal construction variances. Actual usable floor space may vary from any stated or depicted floor area and the unit shall be measured in accordance with the provisions set out in Tarion Builder Bulletin 22. The layout of the suite may be reversed depending on the location of the unit within the project. Any furniture depicted is for illustration purposes only and does not necessarily reflect the fixtures, finishes, appliances, and/or electrical plan of the unit and is not included in the purchase price. Ceiling heights are subject to bulkheads, exposed ducts, dropped ceilings and structural beams, as applicable pursuant to the plans. The view from or through the windows to the exterior cladding of the building and may be partially obstructed by materials affixed to the exterior cladding of the building as part of the architectural design elements and/or interior structural columns that may be required pursuant to the recommendations of the project's engineers. Any and all materials, measurements, dimensions and/or specifications are subject to change without notice. All illustrations are artist's concept only. E. & O. E. April 2018.



LIVE. PLAY. LAKE.

one-bedroom

## Park Suites – 1M

interior area:

529 SF / Suite 01

exterior area:

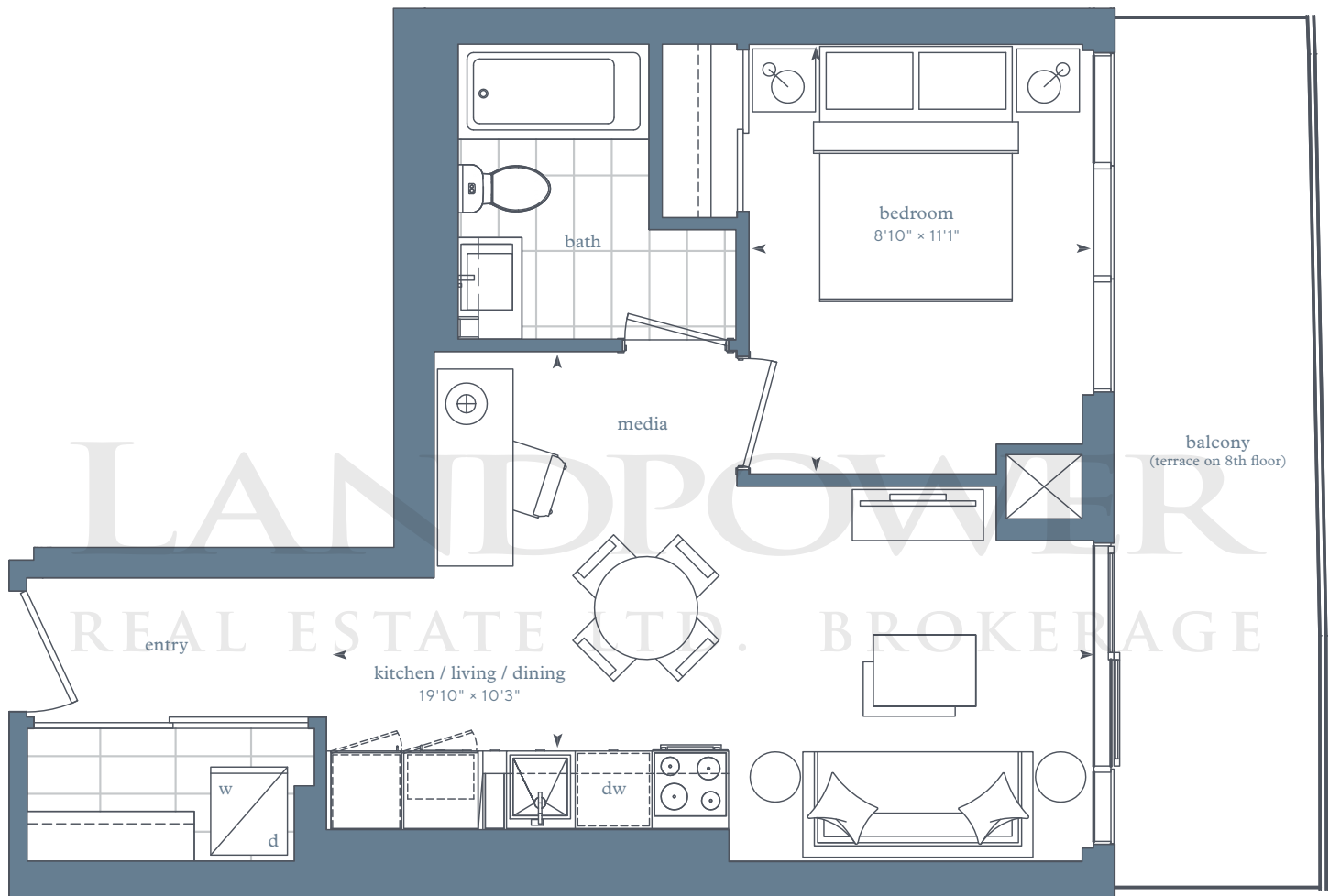
MIN 131 SF

MAX 233 SF

LIVE. PLAY. LAKE.

## LAKE SIDE

RESIDENCES



terrace conditions will require  
curbs and steps to access

Park Suites –  
floor 8



Park Suites –  
floors 9-13



Park Suites –  
floor 14



Park Suites –  
floor 15



Any stated areas and/or dimensions shown are approximate only and subject to normal construction variances. Actual usable floor space may vary from any stated or depicted floor area and the unit shall be measured in accordance with the provisions set out in Tarion Builder Bulletin 22. The layout of the suite may be reversed depending on the location of the unit within the project. Any furniture depicted is for illustration purposes only and does not necessarily reflect the fixtures, finishes, appliances, and/or electrical plan of the unit and is not included in the purchase price. Ceiling heights are subject to bulkheads, exposed ducts, dropped ceilings and structural beams, as applicable pursuant to the plans. The view from or through the windows to the exterior cladding of the building and may be partially obstructed by materials affixed to the exterior cladding of the building as part of the architectural design elements and/or interior structural columns that may be required pursuant to the recommendations of the project's engineers. Any and all materials, measurements, dimensions and/or specifications are subject to change without notice. All illustrations are artist's concept only. E. & O. E. April 2018.



one-bedroom

## Park Suites – 1A

interior area:

543 SF / Suite 02

exterior area:

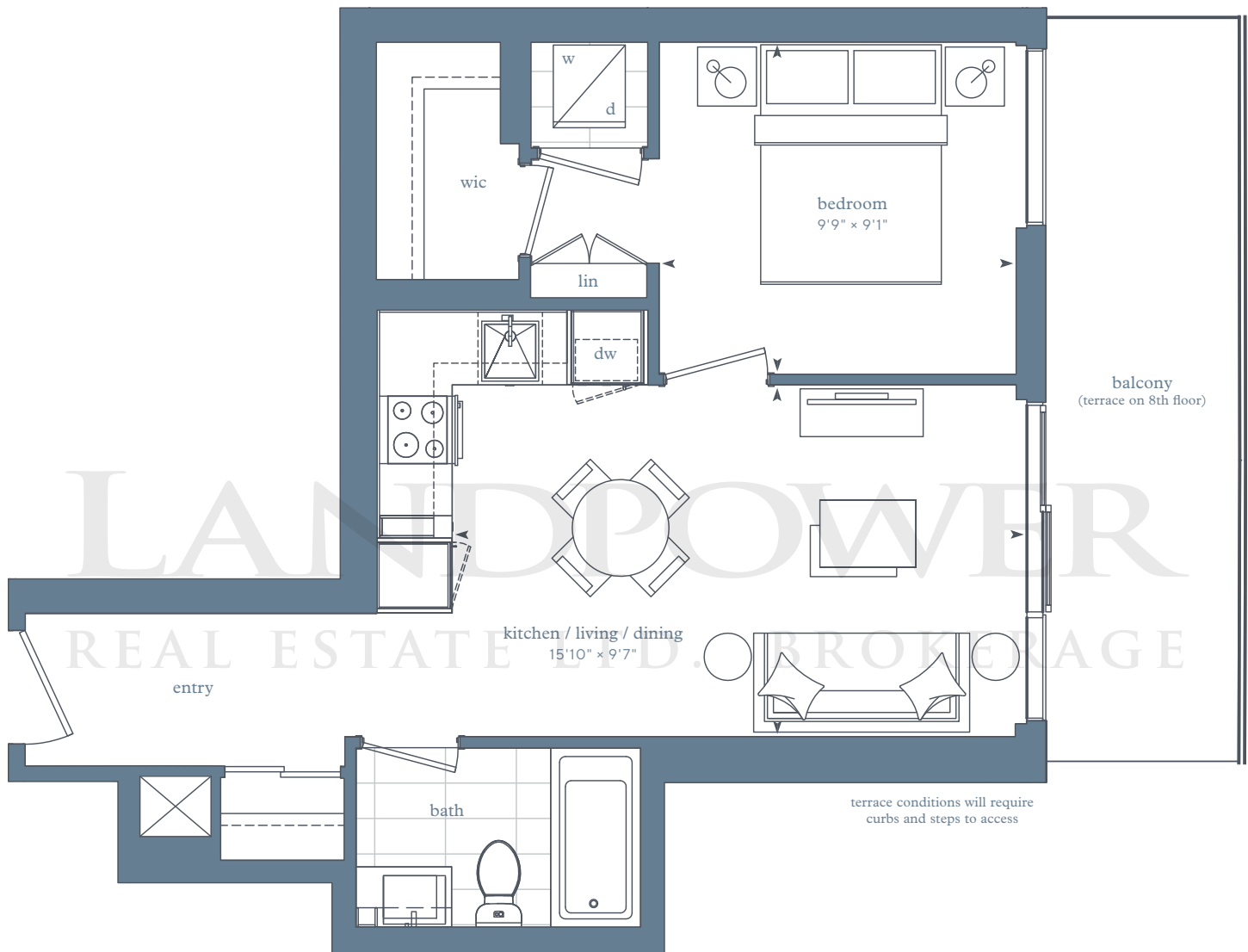
MIN 122 SF

MAX 223 SF

LIVE. PLAY. LAKE.

# LAKE SIDE

RESIDENCES



Park Suites –  
floor 8



Park Suites –  
floors 9-13



Park Suites –  
floor 14



Park Suites –  
floor 15



Any stated areas and/or dimensions shown are approximate only and subject to normal construction variances. Actual usable floor space may vary from any stated or depicted floor area and the unit shall be measured in accordance with the provisions set out in Tarion Builder Bulletin 22. The layout of the suite may be reversed depending on the location of the unit within the project. Any furniture depicted is for illustration purposes only and does not necessarily reflect the fixtures, finishes, appliances, and/or electrical plan of the unit and is not included in the purchase price. Ceiling heights are subject to bulkheads, exposed ducts, dropped ceilings and structural beams, as applicable pursuant to the plans. The view from or through the windows to the exterior cladding of the building and may be partially obstructed by materials affixed to the exterior cladding of the building as part of the architectural design elements and/or interior structural columns that may be required pursuant to the recommendations of the project's engineers. Any and all materials, measurements, dimensions and/or specifications are subject to change without notice. All illustrations are artist's concept only. E. & O. E. April 2018.



one-bedroom

## Park Suites – 1G

interior area:

551 SF / Suite 17

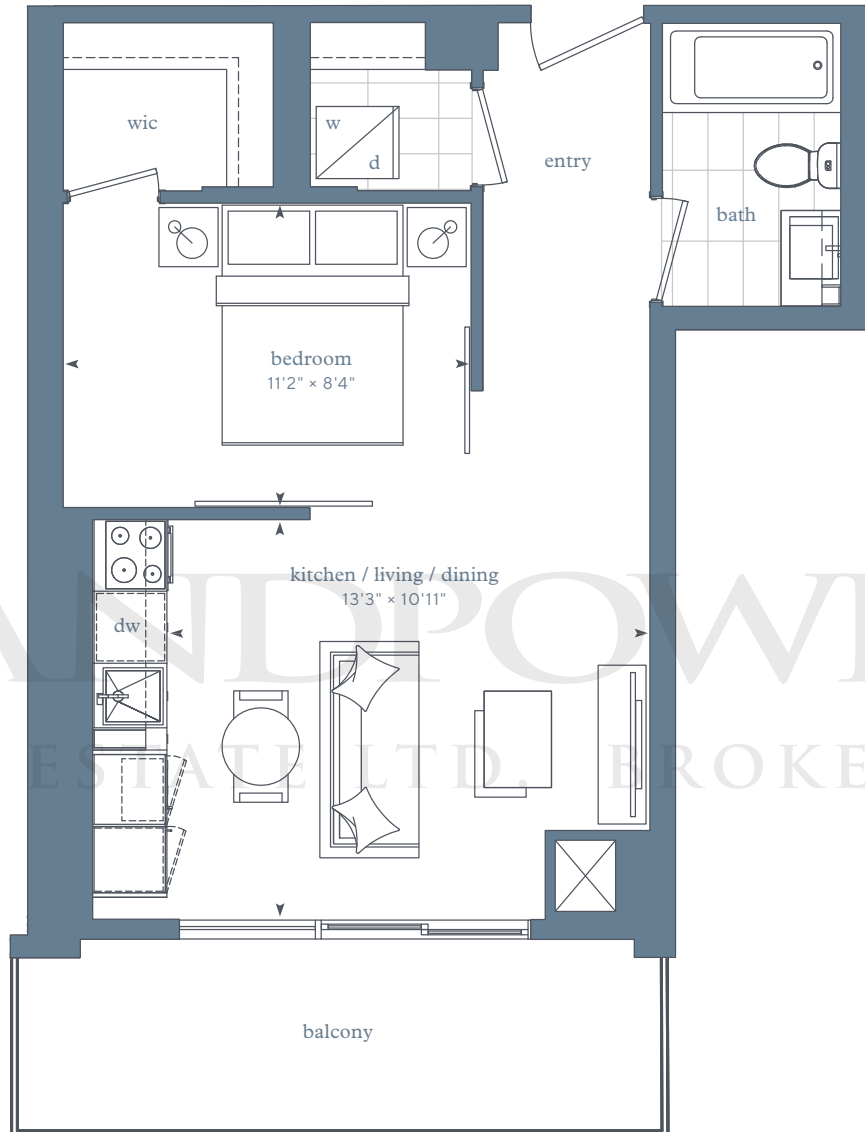
exterior area:

99 SF

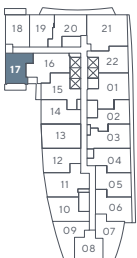
LIVE. PLAY. LAKE.

# LAKE SIDE

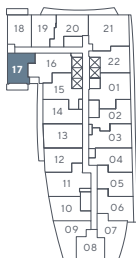
RESIDENCES



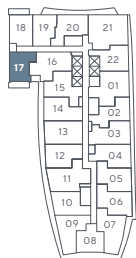
Park Suites –  
floor 2



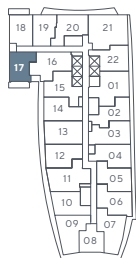
Park Suites –  
floor 3



Park Suites –  
floors 4-5



Park Suites –  
floors 6-7



Any stated areas and/or dimensions shown are approximate only and subject to normal construction variances. Actual usable floor space may vary from any stated or depicted floor area and the unit shall be measured in accordance with the provisions set out in Tarion Builder Bulletin 22. The layout of the suite may be reversed depending on the location of the unit within the project. Any furniture depicted is for illustration purposes only and does not necessarily reflect the fixtures, finishes, appliances, and/or electrical plan of the unit and is not included in the purchase price. Ceiling heights are subject to bulkheads, exposed ducts, dropped ceilings and structural beams, as applicable pursuant to the plans. The view from or through the windows to the exterior cladding of the building and may be partially obstructed by materials affixed to the exterior cladding of the building as part of the architectural design elements and/or interior structural columns that may be required pursuant to the recommendations of the project's engineers. Any and all materials, measurements, dimensions and/or specifications are subject to change without notice. All illustrations are artist's concept only. E. & O. E. April 2018.



one-bedroom

## Park Suites – 1C

interior area:

579 SF / Suite 02

exterior area:

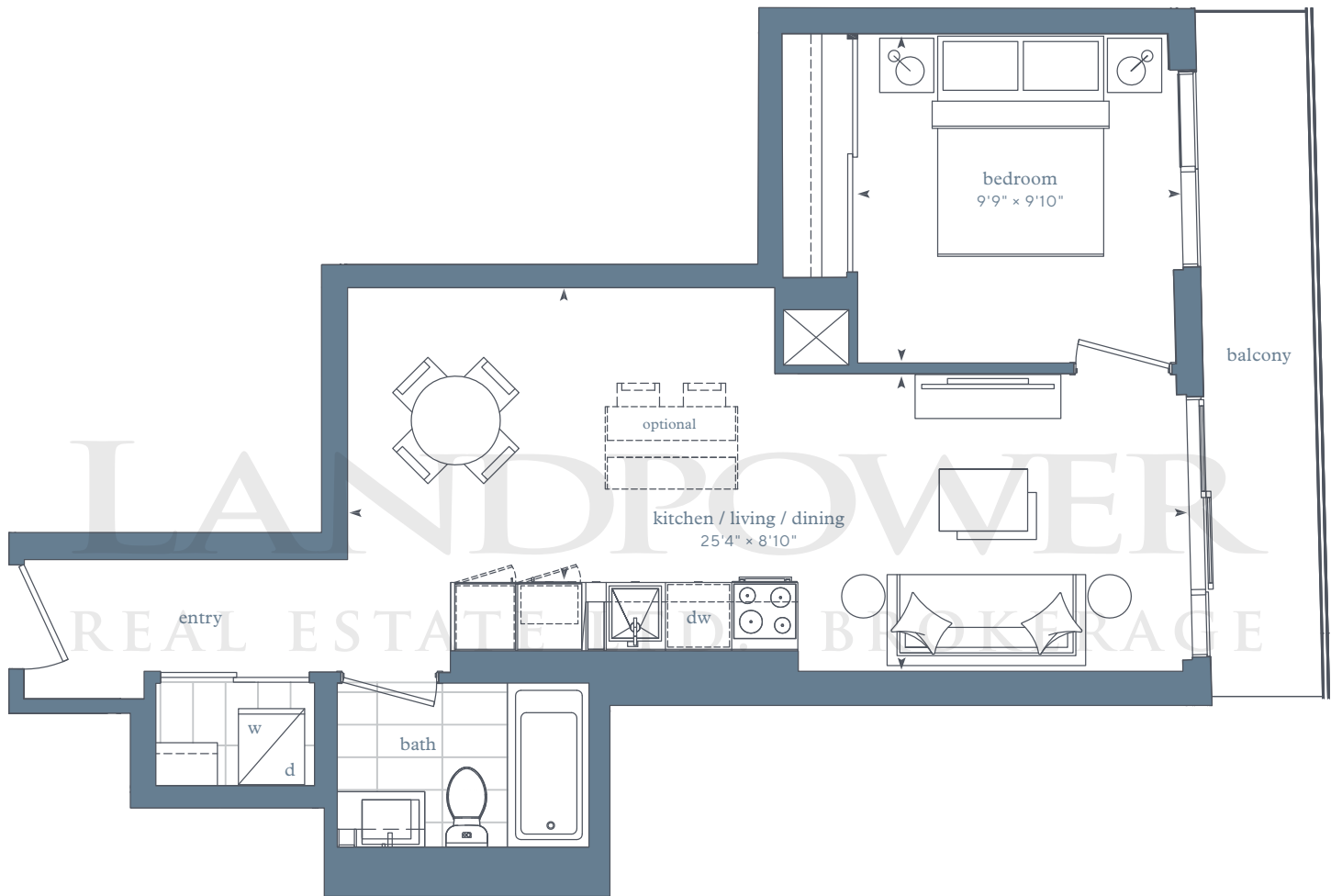
MIN 66 SF

MAX 72 SF

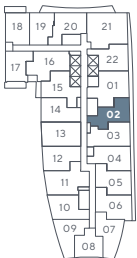
LIVE. PLAY. LAKE.

# LAKE SIDE

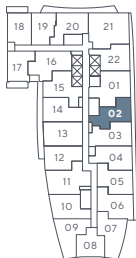
RESIDENCES



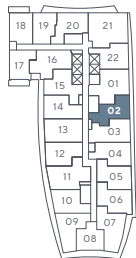
Park Suites –  
floor 2



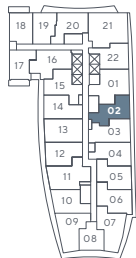
Park Suites –  
floor 3



Park Suites –  
floors 4-5



Park Suites –  
floors 6-7



Any stated areas and/or dimensions shown are approximate only and subject to normal construction variances. Actual usable floor space may vary from any stated or depicted floor area and the unit shall be measured in accordance with the provisions set out in Tarion Builder Bulletin 22. The layout of the suite may be reversed depending on the location of the unit within the project. Any furniture depicted is for illustration purposes only and does not necessarily reflect the fixtures, finishes, appliances, and/or electrical plan of the unit and is not included in the purchase price. Ceiling heights are subject to bulkheads, exposed ducts, dropped ceilings and structural beams, as applicable pursuant to the plans. The view from or through the windows to the exterior cladding of the building and may be partially obstructed by materials affixed to the exterior cladding of the building as part of the architectural design elements and/or interior structural columns that may be required pursuant to the recommendations of the project's engineers. Any and all materials, measurements, dimensions and/or specifications are subject to change without notice. All illustrations are artist's concept only. E. & O. E. April 2018.



one-bedroom

## Park Suites – 1H

interior area:

595 SF / Suite 22

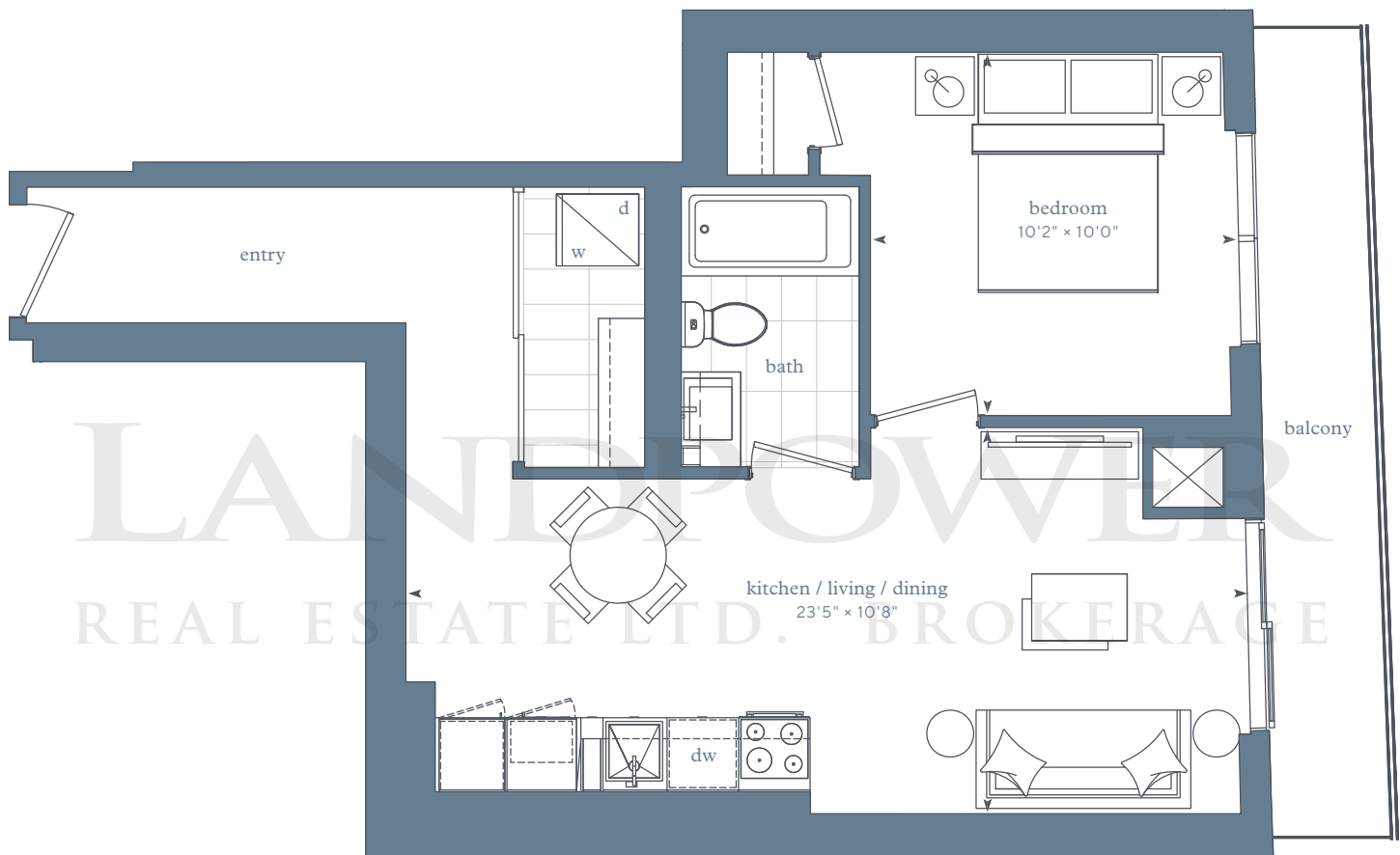
exterior area:

76 SF

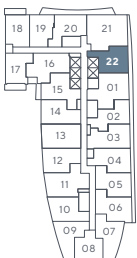
LIVE. PLAY. LAKE.

# LAKE SIDE

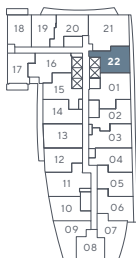
RESIDENCES



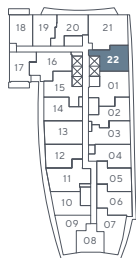
Park Suites –  
floor 2



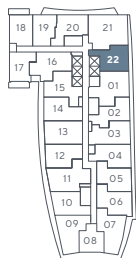
Park Suites –  
floor 3



Park Suites –  
floors 4-5



Park Suites –  
floors 6-7



Any stated areas and/or dimensions shown are approximate only and subject to normal construction variances. Actual usable floor space may vary from any stated or depicted floor area and the unit shall be measured in accordance with the provisions set out in Tarion Builder Bulletin 22. The layout of the suite may be reversed depending on the location of the unit within the project. Any furniture depicted is for illustration purposes only and does not necessarily reflect the fixtures, finishes, appliances, and/or electrical plan of the unit and is not included in the purchase price. Ceiling heights are subject to bulkheads, exposed ducts, dropped ceilings and structural beams, as applicable pursuant to the plans. The view from or through the windows to the exterior cladding of the building and may be partially obstructed by materials affixed to the exterior cladding of the building as part of the architectural design elements and/or interior structural columns that may be required pursuant to the recommendations of the project's engineers. Any and all materials, measurements, dimensions and/or specifications are subject to change without notice. All illustrations are artist's concept only. E. & O. E. April 2018.





one-bedroom

## Park Suites – 1F

interior area:

607 SF / Suite 14

exterior area (if available):

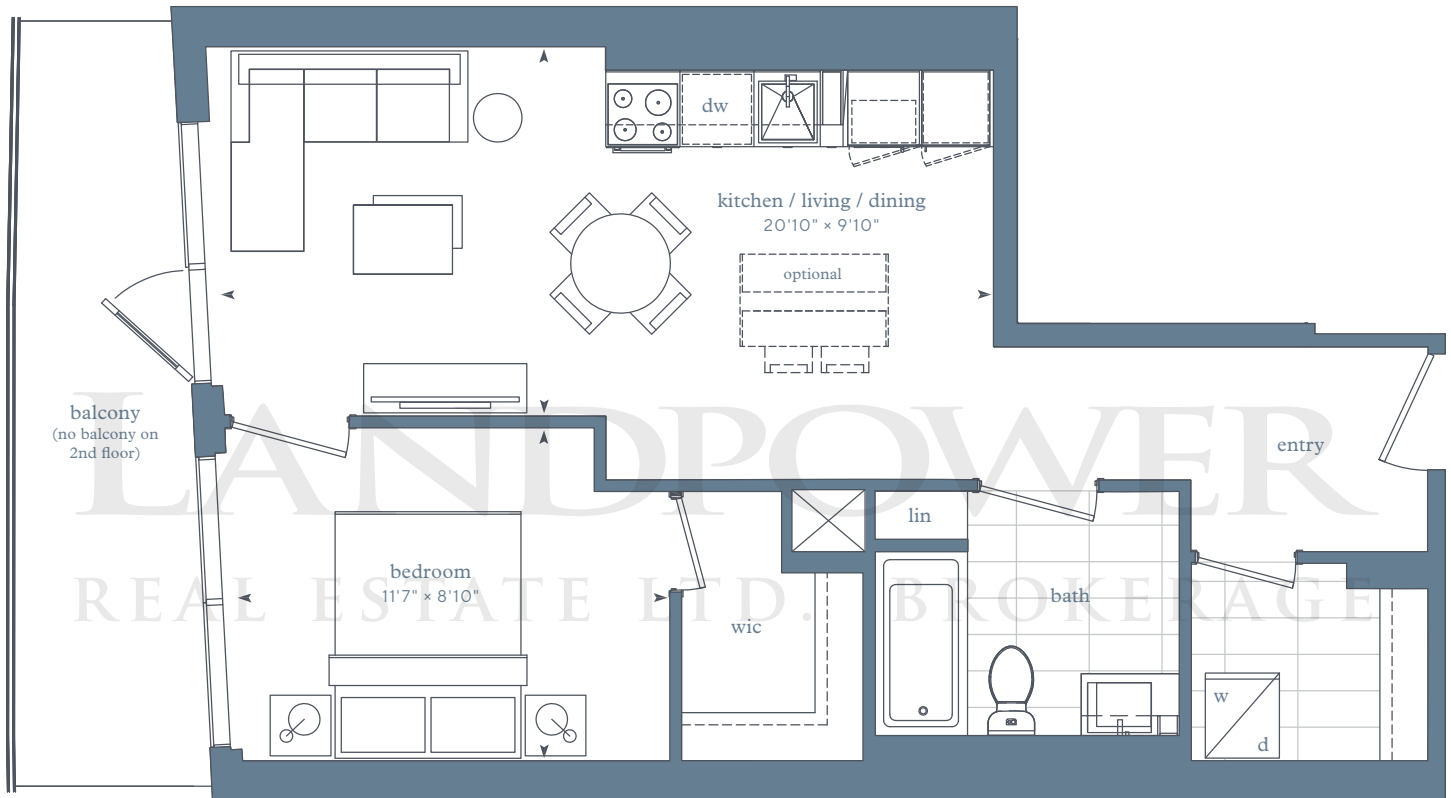
MIN 93 SF

MAX 100 SF

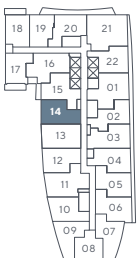
LIVE. PLAY. LAKE.

# LAKE SIDE

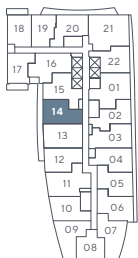
RESIDENCES



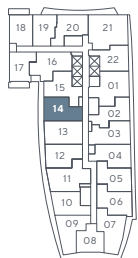
Park Suites –  
floor 2



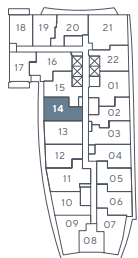
Park Suites –  
floor 3



Park Suites –  
floors 4-5



Park Suites –  
floors 6-7



Any stated areas and/or dimensions shown are approximate only and subject to normal construction variances. Actual usable floor space may vary from any stated or depicted floor area and the unit shall be measured in accordance with the provisions set out in Tarion Builder Bulletin 22. The layout of the suite may be reversed depending on the location of the unit within the project. Any furniture depicted is for illustration purposes only and does not necessarily reflect the fixtures, finishes, appliances, and/or electrical plan of the unit and is not included in the purchase price. Ceiling heights are subject to bulkheads, exposed ducts, dropped ceilings and structural beams, as applicable pursuant to the plans. The view from or through the windows to the exterior cladding of the building and may be partially obstructed by materials affixed to the exterior cladding of the building as part of the architectural design elements and/or interior structural columns that may be required pursuant to the recommendations of the project's engineers. Any and all materials, measurements, dimensions and/or specifications are subject to change without notice. All illustrations are artist's concept only. E. & O. E. April 2018.



one-bedroom

## Park Suites – 1E

interior area:

627 SF / Suite 04

exterior area:

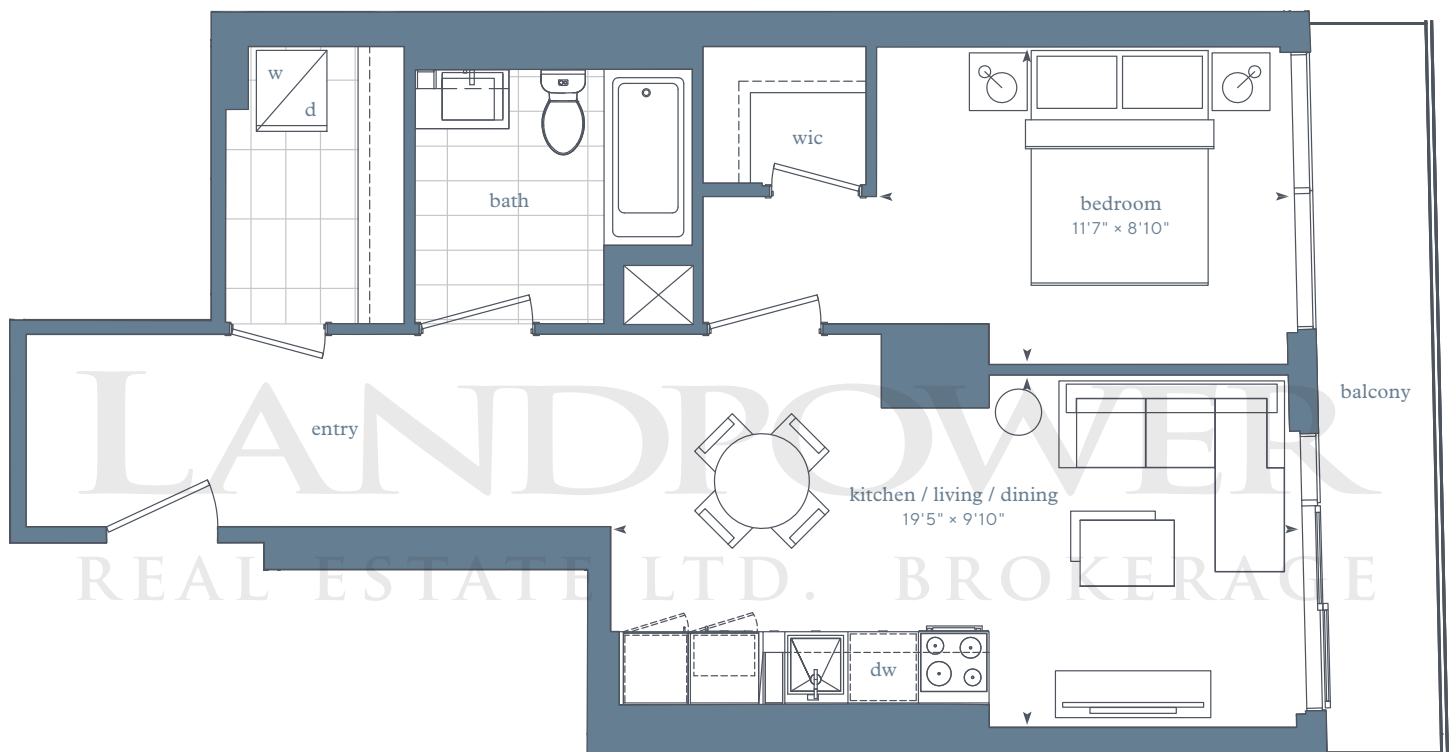
MIN 59 SF

MAX 70 SF

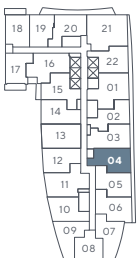
LIVE. PLAY. LAKE.

# LAKE SIDE

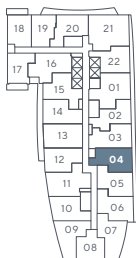
RESIDENCES



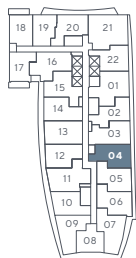
Park Suites –  
floor 2



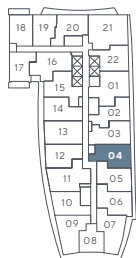
Park Suites –  
floor 3



Park Suites –  
floors 4-5



Park Suites –  
floors 6-7



Any stated areas and/or dimensions shown are approximate only and subject to normal construction variances. Actual usable floor space may vary from any stated or depicted floor area and the unit shall be measured in accordance with the provisions set out in Tarion Builder Bulletin 22. The layout of the suite may be reversed depending on the location of the unit within the project. Any furniture depicted is for illustration purposes only and does not necessarily reflect the fixtures, finishes, appliances, and/or electrical plan of the unit and is not included in the purchase price. Ceiling heights are subject to bulkheads, exposed ducts, dropped ceilings and structural beams, as applicable pursuant to the plans. The view from or through the windows to the exterior cladding of the building and may be partially obstructed by materials affixed to the exterior cladding of the building as part of the architectural design elements and/or interior structural columns that may be required pursuant to the recommendations of the project's engineers. Any and all materials, measurements, dimensions and/or specifications are subject to change without notice. All illustrations are artist's concept only. E. & O. E. April 2018.



one-bedroom + den

## Park Suites – 1DK

interior area:

531 SF / Suite 19

exterior area:

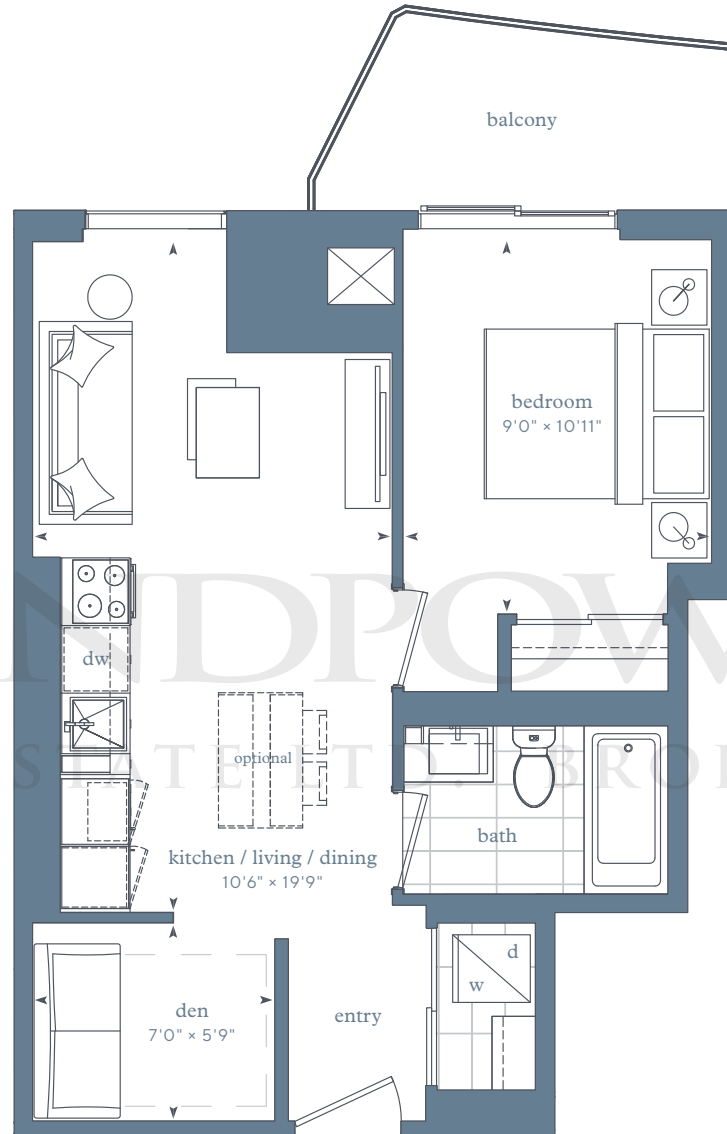
MIN 62 SF

MAX 80 SF

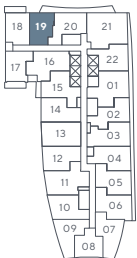
LIVE. PLAY. LAKE.

# LAKE SIDE

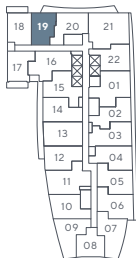
RESIDENCES



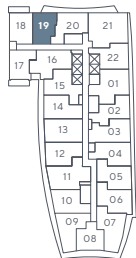
Park Suites –  
floor 2



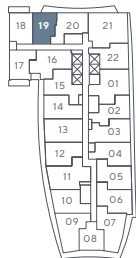
Park Suites –  
floor 3



Park Suites –  
floors 4-5



Park Suites –  
floors 6-7



Any stated areas and/or dimensions shown are approximate only and subject to normal construction variances. Actual usable floor space may vary from any stated or depicted floor area and the unit shall be measured in accordance with the provisions set out in Tarion Builder Bulletin 22. The layout of the suite may be reversed depending on the location of the unit within the project. Any furniture depicted is for illustration purposes only and does not necessarily reflect the fixtures, finishes, appliances, and/or electrical plan of the unit and is not included in the purchase price. Ceiling heights are subject to bulkheads, exposed ducts, dropped ceilings and structural beams, as applicable pursuant to the plans. The view from or through the windows to the exterior cladding of the building and may be partially obstructed by materials affixed to the exterior cladding of the building as part of the architectural design elements and/or interior structural columns that may be required pursuant to the recommendations of the project's engineers. Any and all materials, measurements, dimensions and/or specifications are subject to change without notice. All illustrations are artist's concept only. E. & O. E. April 2018.



one-bedroom + den

## Park Suites – 1DJ

interior area:

577 SF / Suite 18

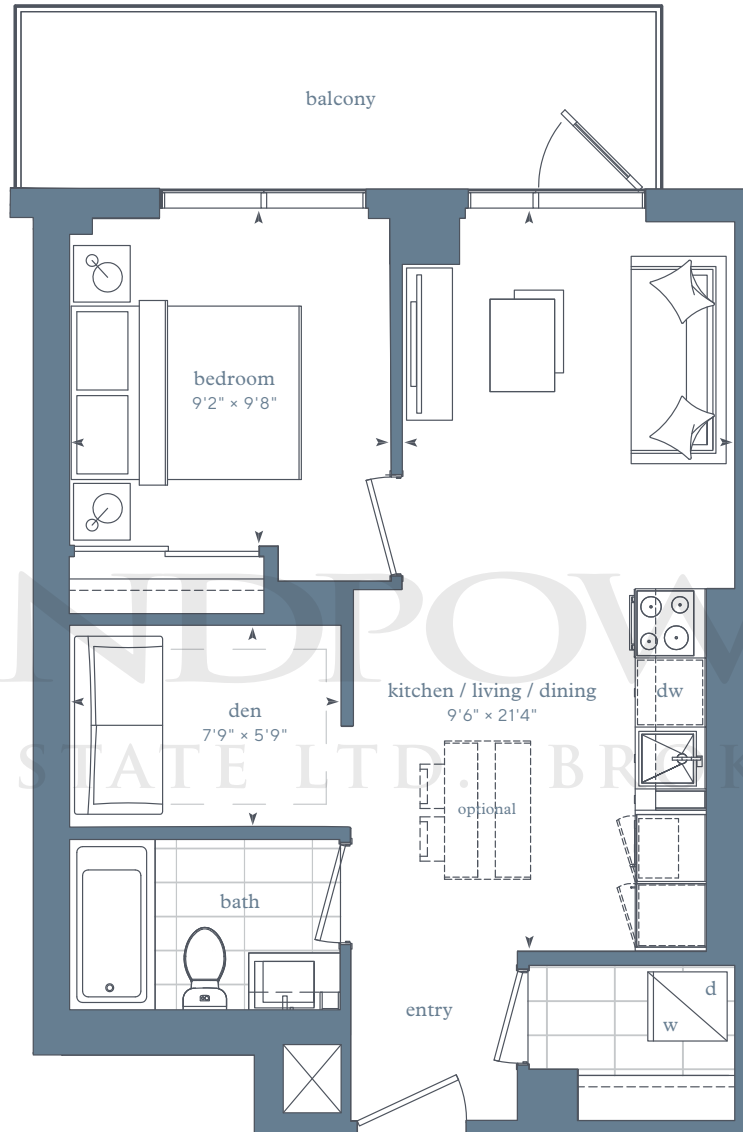
exterior area:

97 SF

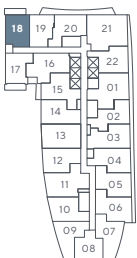
LIVE. PLAY. LAKE.

# LAKE SIDE

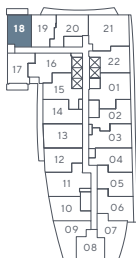
RESIDENCES



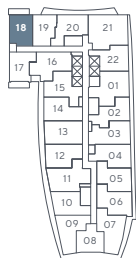
Park Suites –  
floor 2



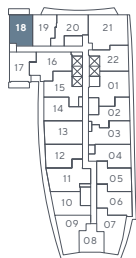
Park Suites –  
floor 3



Park Suites –  
floors 4-5



Park Suites –  
floors 6-7



Any stated areas and/or dimensions shown are approximate only and subject to normal construction variances. Actual usable floor space may vary from any stated or depicted floor area and the unit shall be measured in accordance with the provisions set out in Tarion Builder Bulletin 22. The layout of the suite may be reversed depending on the location of the unit within the project. Any furniture depicted is for illustration purposes only and does not necessarily reflect the fixtures, finishes, appliances, and/or electrical plan of the unit and is not included in the purchase price. Ceiling heights are subject to bulkheads, exposed ducts, dropped ceilings and structural beams, as applicable pursuant to the plans. The view from or through the windows to the exterior cladding of the building and may be partially obstructed by materials affixed to the exterior cladding of the building as part of the architectural design elements and/or interior structural columns that may be required pursuant to the recommendations of the project's engineers. Any and all materials, measurements, dimensions and/or specifications are subject to change without notice. All illustrations are artist's concept only. E. & O. E. April 2018.



one-bedroom + den

## Park Suites – 1MC

interior area:

587-605 SF / Suite 10

exterior area (if available):

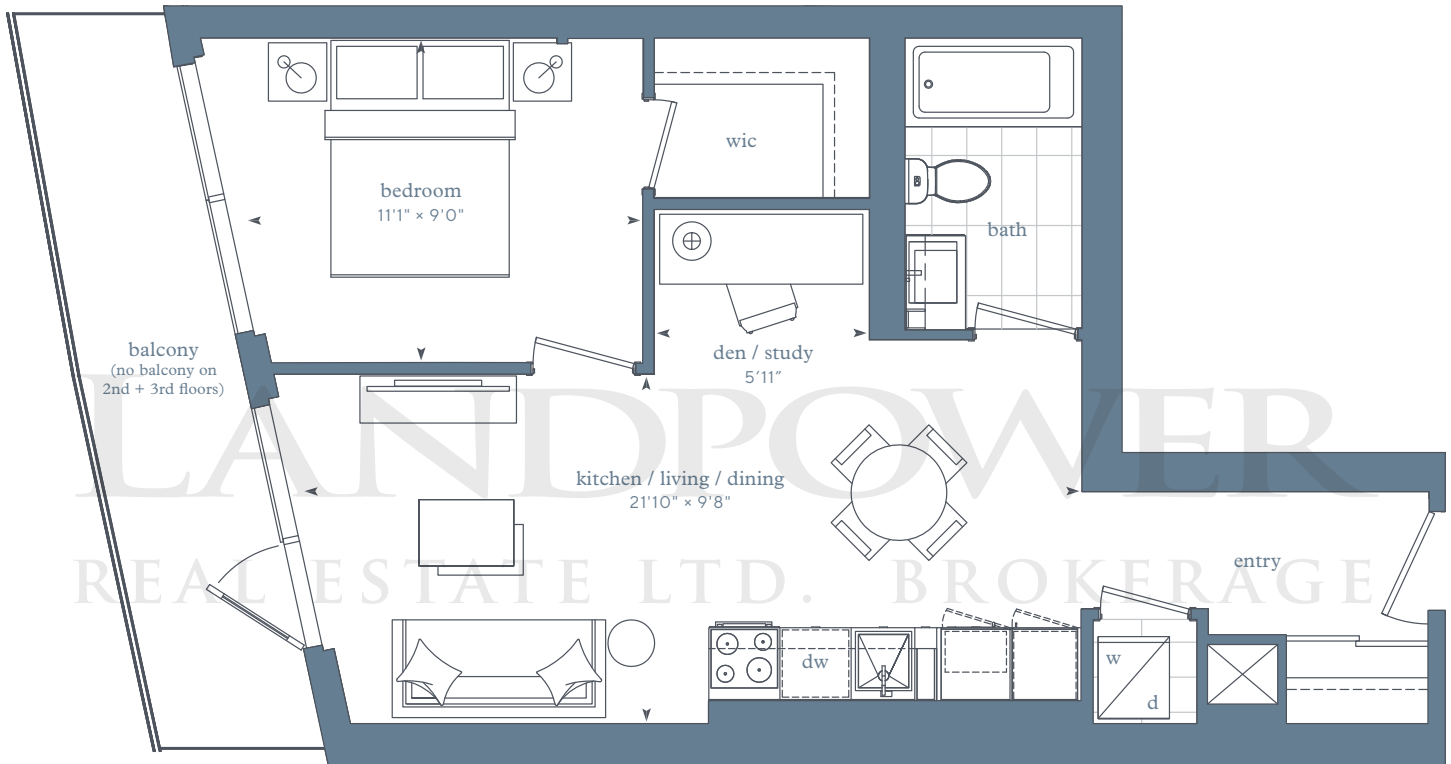
MIN 83 SF

MAX 92 SF

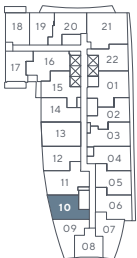
LIVE. PLAY. LAKE.

## LAKE SIDE

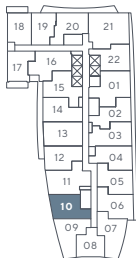
RESIDENCES



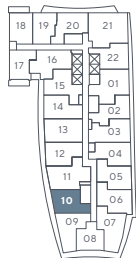
Park Suites –  
floor 2



Park Suites –  
floor 3



Park Suites –  
floors 4-5



Any stated areas and/or dimensions shown are approximate only and subject to normal construction variances. Actual usable floor space may vary from any stated or depicted floor area and the unit shall be measured in accordance with the provisions set out in Tarion Builder Bulletin 22. The layout of the suite may be reversed depending on the location of the unit within the project. Any furniture depicted is for illustration purposes only and does not necessarily reflect the fixtures, finishes, appliances, and/or electrical plan of the unit and is not included in the purchase price. Ceiling heights are subject to bulkheads, exposed ducts, dropped ceilings and structural beams, as applicable pursuant to the plans. The view from or through the windows to the exterior cladding of the building and may be partially obstructed by materials affixed to the exterior cladding of the building as part of the architectural design elements and/or interior structural columns that may be required pursuant to the recommendations of the project's engineers. Any and all materials, measurements, dimensions and/or specifications are subject to change without notice. All illustrations are artist's concept only. E. & O. E. April 2018.



one-bedroom + den

## Park Suites – 1DP

interior area:

590 SF / Suite 12

exterior area (if available):

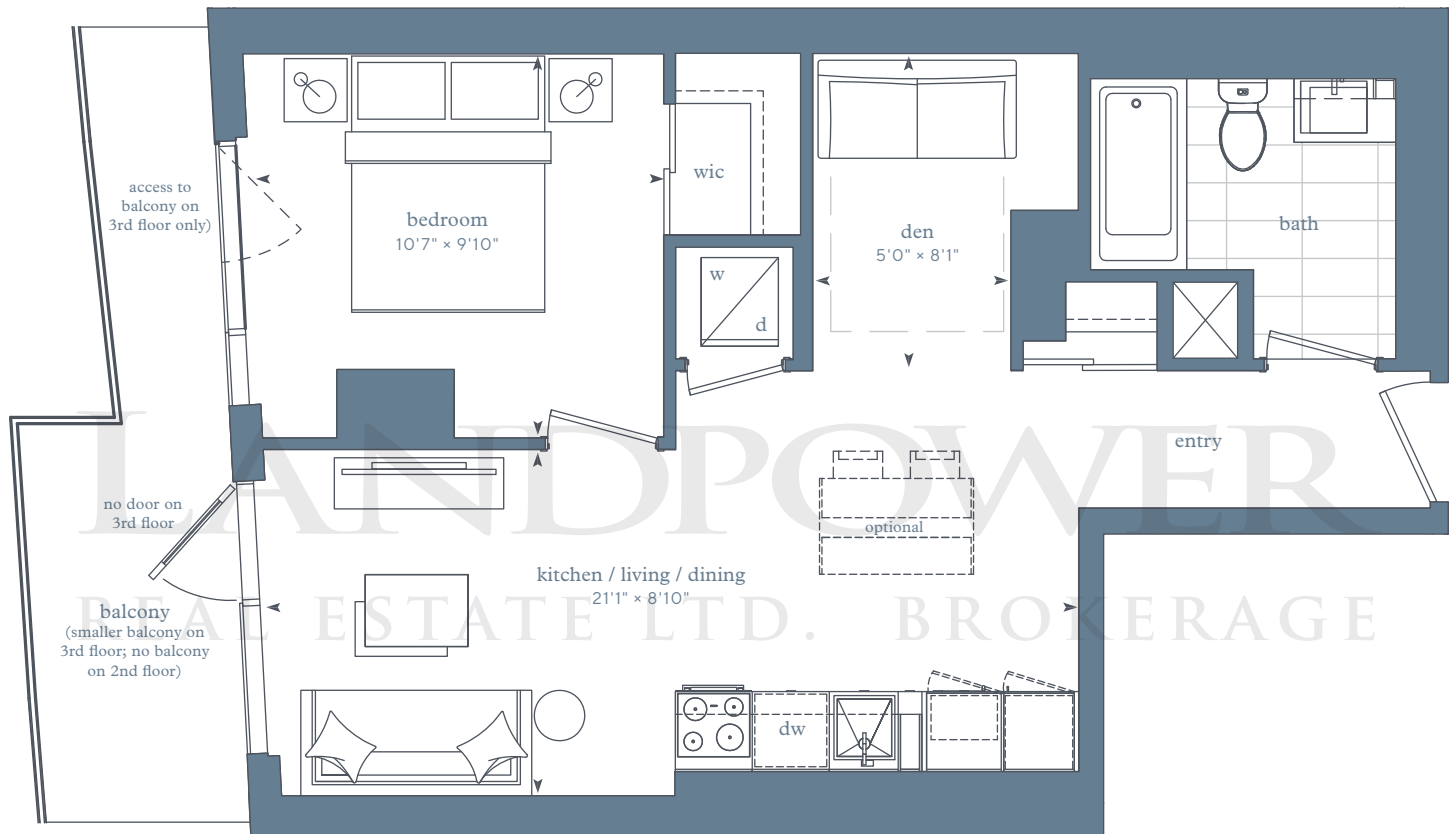
MIN 49 SF

MAX 111 SF

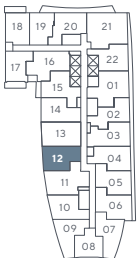
LIVE. PLAY. LAKE.

# LAKE SIDE

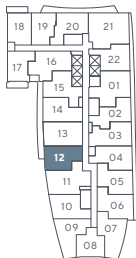
RESIDENCES



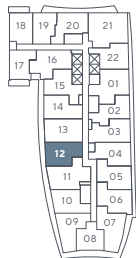
Park Suites – floor 2



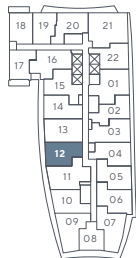
Park Suites – floor 3



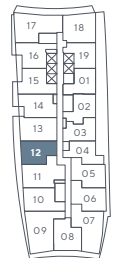
Park Suites – floors 4-5



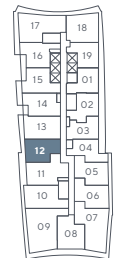
Park Suites – floors 6-7



Park Suites – floor 8



Park Suites – floors 9-13



Any stated areas and/or dimensions shown are approximate only and subject to normal construction variances. Actual usable floor space may vary from any stated or depicted floor area and the unit shall be measured in accordance with the provisions set out in Tarion Builder Bulletin 22. The layout of the suite may be reversed depending on the location of the unit within the project. Any furniture depicted is for illustration purposes only and does not necessarily reflect the fixtures, finishes, appliances, and/or electrical plan of the unit and is not included in the purchase price. Ceiling heights are subject to bulkheads, exposed ducts, dropped ceilings and structural beams, as applicable pursuant to the plans. The view from or through the windows to the exterior cladding of the building and may be partially obstructed by materials affixed to the exterior cladding of the building as part of the architectural design elements and/or interior structural columns that may be required pursuant to the recommendations of the project's engineers. Any and all materials, measurements, dimensions and/or specifications are subject to change without notice. All illustrations are artist's concept only. E. & O. E. April 2018.



one-bedroom + den  
**Park Suites – 10F**

interior area:  
 599 SF / Suite 04

exterior area:  
 121 SF

LIVE. PLAY. LAKE.  
**LAKE SIDE**  
 RESIDENCES



**Park Suites –  
 floor 14**



Any stated areas and/or dimensions shown are approximate only and subject to normal construction variances. Actual usable floor space may vary from any stated or depicted floor area and the unit shall be measured in accordance with the provisions set out in Tarion Builder Bulletin 22. The layout of the suite may be reversed depending on the location of the unit within the project. Any furniture depicted is for illustration purposes only and does not necessarily reflect the fixtures, finishes, appliances, and/or electrical plan of the unit and is not included in the purchase price. Ceiling heights are subject to bulkheads, exposed ducts, dropped ceilings and structural beams, as applicable pursuant to the plans. The view from or through the windows to the exterior cladding of the building and may be partially obstructed by materials affixed to the exterior cladding of the building as part of the architectural design elements and/or interior structural columns that may be required pursuant to the recommendations of the project's engineers. Any and all materials, measurements, dimensions and/or specifications are subject to change without notice. All illustrations are artist's concept only. E. & O. E. April 2018.

one-bedroom + den

# Park Suites – 1DN

interior area:

616 SF / Suite 10 (656 SF on 8th floor + above)

exterior area:

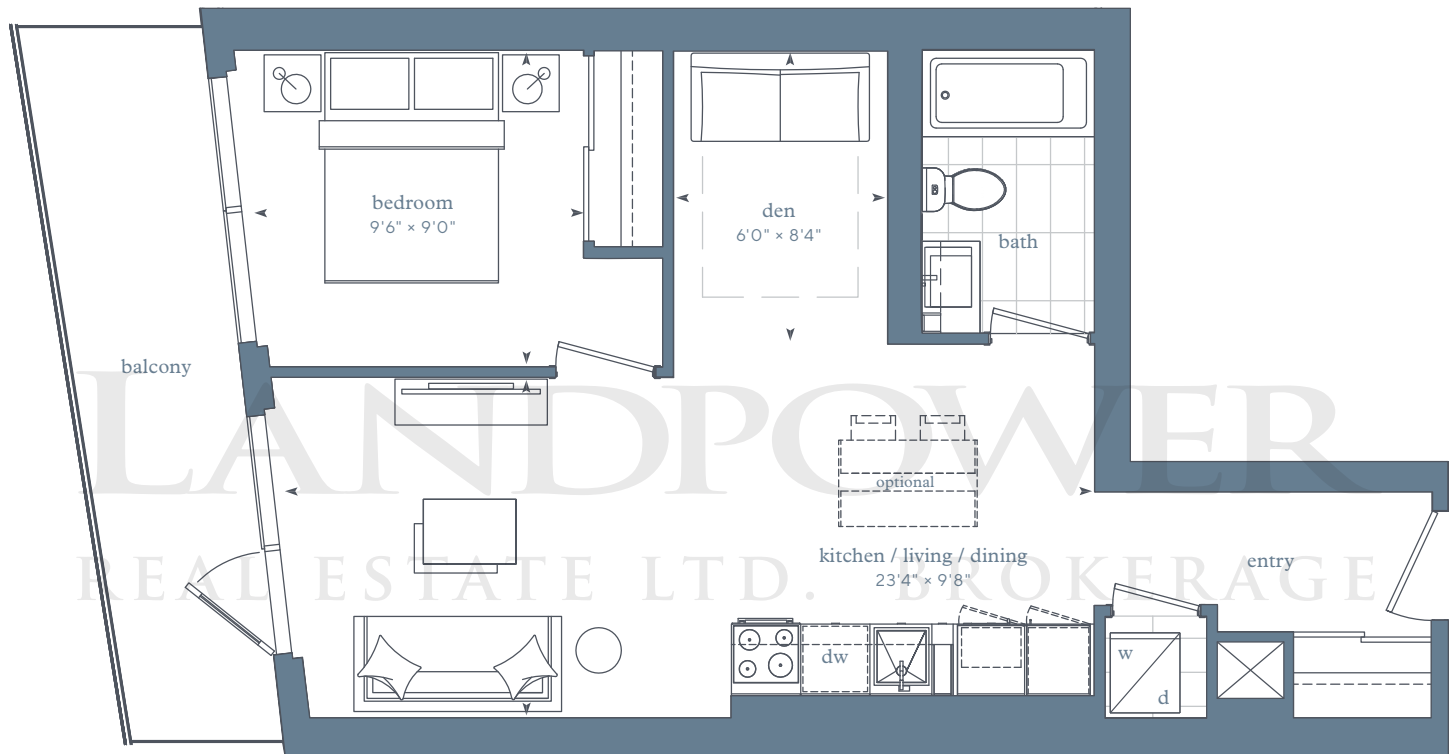
MIN 75 SF

MAX 107 SF

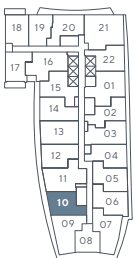
LIVE. PLAY. LAKE.

# LAKE SIDE

RESIDENCES



Park Suites –  
floors 6-7



Park Suites –  
floor 8



Park Suites –  
floors 9-13



Any stated areas and/or dimensions shown are approximate only and subject to normal construction variances. Actual usable floor space may vary from any stated or depicted floor area and the unit shall be measured in accordance with the provisions set out in Tarion Builder Bulletin 22. The layout of the suite may be reversed depending on the location of the unit within the project. Any furniture depicted is for illustration purposes only and does not necessarily reflect the fixtures, finishes, appliances, and/or electrical plan of the unit and is not included in the purchase price. Ceiling heights are subject to bulkheads, exposed ducts, dropped ceilings and structural beams, as applicable pursuant to the plans. The view from or through the windows to the exterior cladding of the building and may be partially obstructed by materials affixed to the exterior cladding of the building as part of the architectural design elements and/or interior structural columns that may be required pursuant to the recommendations of the project's engineers. Any and all materials, measurements, dimensions and/or specifications are subject to change without notice. All illustrations are artist's concept only. E. & O. E. April 2018.





one-bedroom + den

## Park Suites – 1DL

interior area:

619 SF / Suite 20

exterior area:

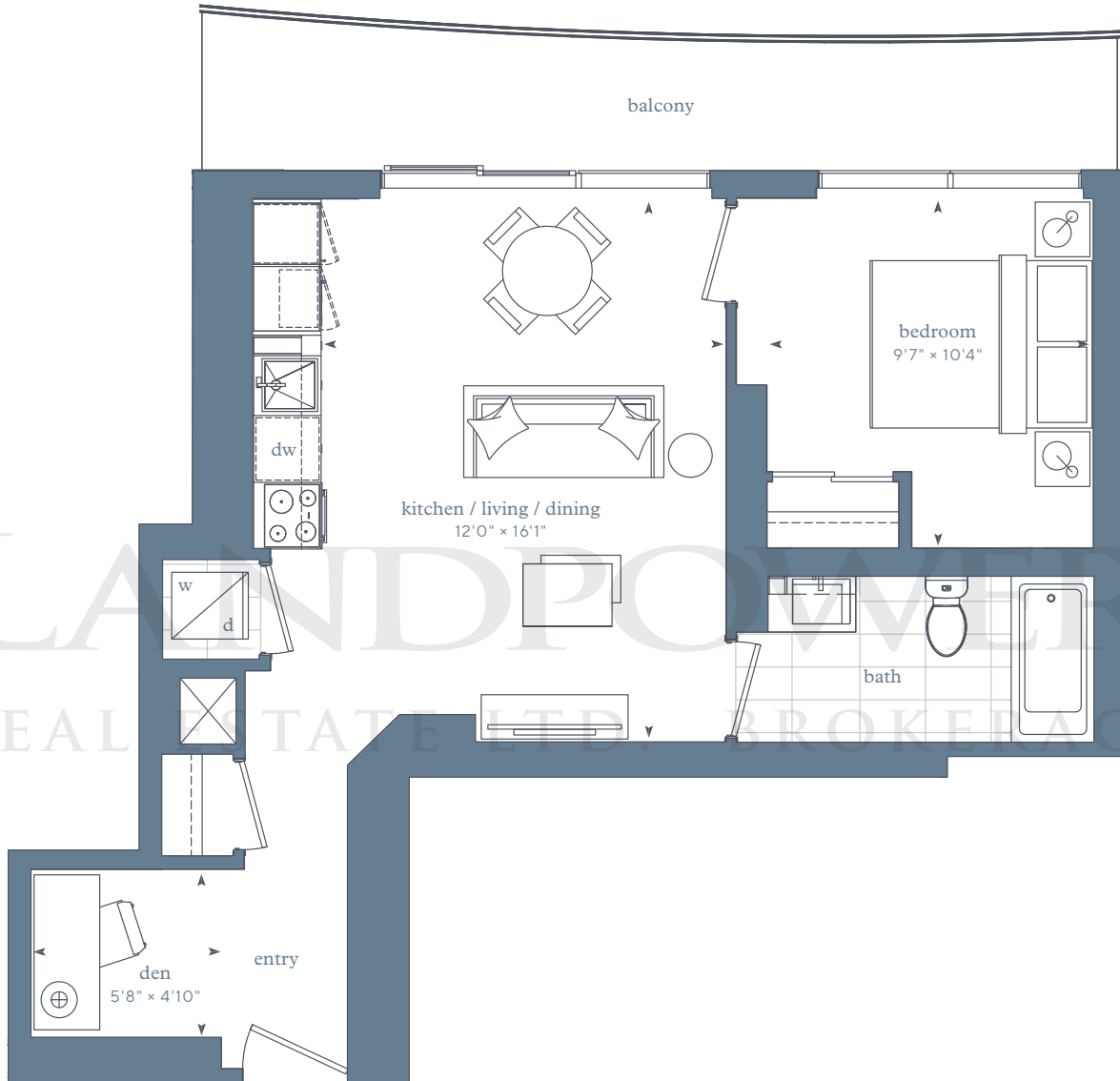
MIN 111 SF

MAX 115 SF

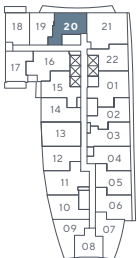
LIVE. PLAY. LAKE.

# LAKE SIDE

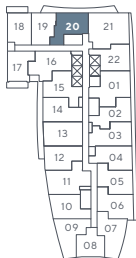
RESIDENCES



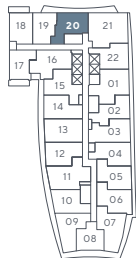
Park Suites –  
floor 2



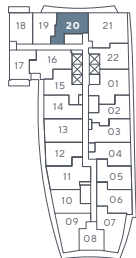
Park Suites –  
floor 3



Park Suites –  
floors 4-5



Park Suites –  
floors 6-7



Any stated areas and/or dimensions shown are approximate only and subject to normal construction variances. Actual usable floor space may vary from any stated or depicted floor area and the unit shall be measured in accordance with the provisions set out in Tarion Builder Bulletin 22. The layout of the suite may be reversed depending on the location of the unit within the project. Any furniture depicted is for illustration purposes only and does not necessarily reflect the fixtures, finishes, appliances, and/or electrical plan of the unit and is not included in the purchase price. Ceiling heights are subject to bulkheads, exposed ducts, dropped ceilings and structural beams, as applicable pursuant to the plans. The view from or through the windows to the exterior cladding of the building and may be partially obstructed by materials affixed to the exterior cladding of the building as part of the architectural design elements and/or interior structural columns that may be required pursuant to the recommendations of the project's engineers. Any and all materials, measurements, dimensions and/or specifications are subject to change without notice. All illustrations are artist's concept only. E. & O. E. April 2018.



one-bedroom + den

## Park Suites – 1DB

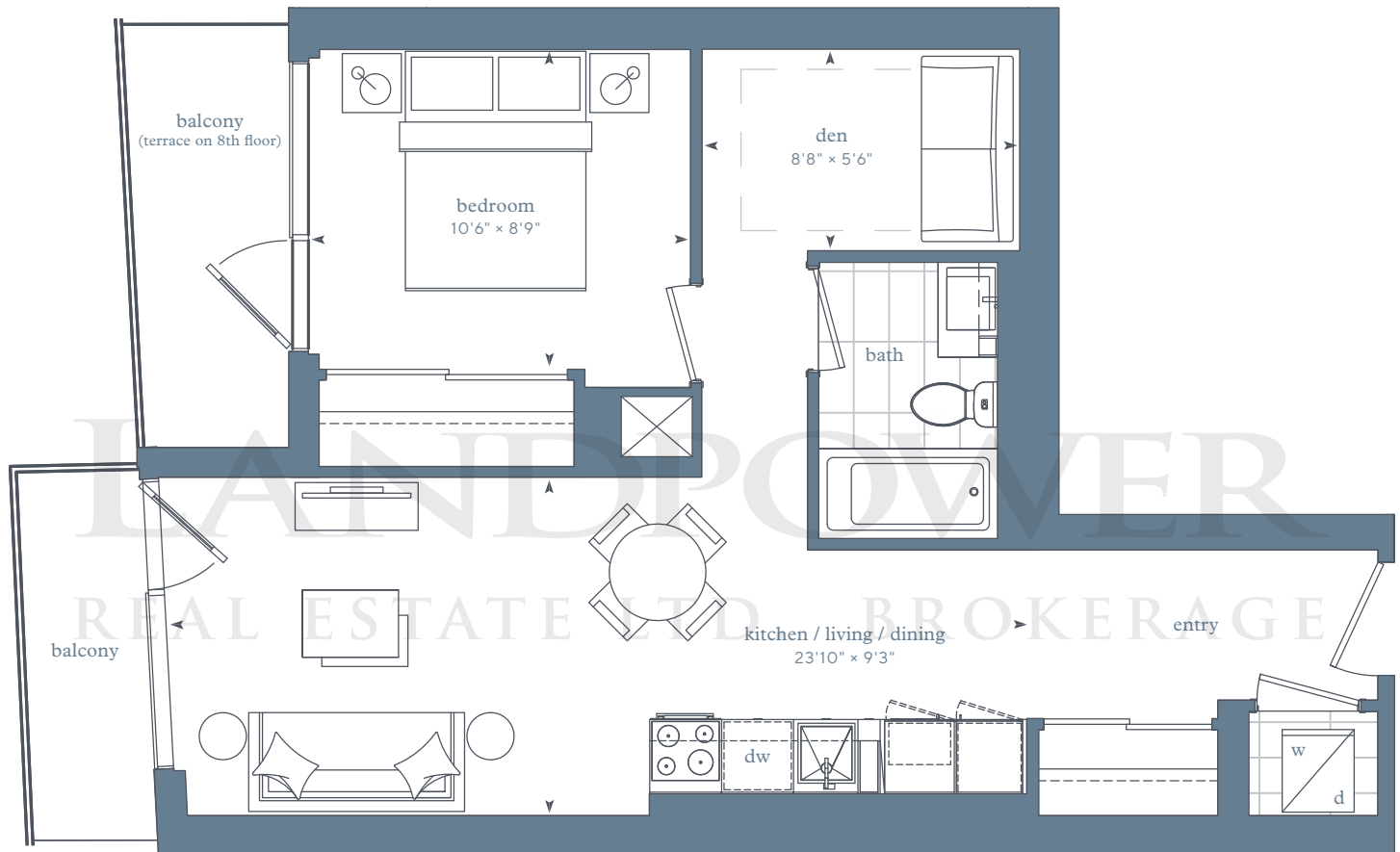
interior area:  
625 SF / Suite 15, 08, 04

exterior area:  
MIN 96 SF  
MAX 110 SF

LIVE. PLAY. LAKE.

# LAKE SIDE

RESIDENCES



terrace conditions will require  
curbs and steps to access

Park Suites –  
floor 8



Park Suites –  
floors 9-13



Park Suites –  
floor 14



Park Suites –  
floor 15



Any stated areas and/or dimensions shown are approximate only and subject to normal construction variances. Actual usable floor space may vary from any stated or depicted floor area and the unit shall be measured in accordance with the provisions set out in Tarion Builder Bulletin 22. The layout of the suite may be reversed depending on the location of the unit within the project. Any furniture depicted is for illustration purposes only and does not necessarily reflect the fixtures, finishes, appliances, and/or electrical plan of the unit and is not included in the purchase price. Ceiling heights are subject to bulkheads, exposed ducts, dropped ceilings and structural beams, as applicable pursuant to the plans. The view from or through the windows to the exterior cladding of the building and may be partially obstructed by materials affixed to the exterior cladding of the building as part of the architectural design elements and/or interior structural columns that may be required pursuant to the recommendations of the project's engineers. Any and all materials, measurements, dimensions and/or specifications are subject to change without notice. All illustrations are artist's concept only. E. & O. E. April 2018.



one-bedroom + den

## Park Suites – 1DF

interior area:

631 SF / Suite 05 | 650 SF / Suite 06

exterior area:

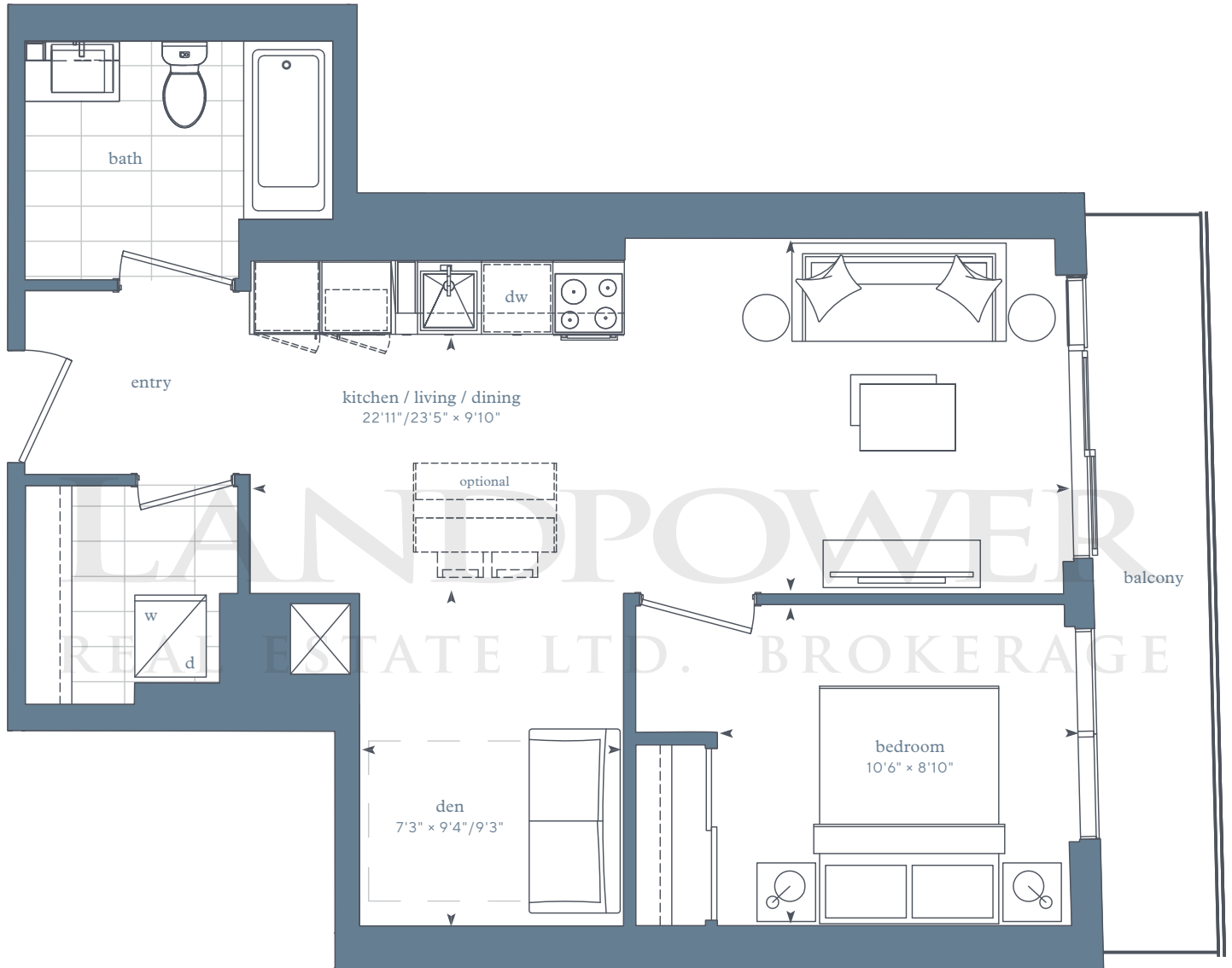
MIN 59 SF

MAX 73 SF

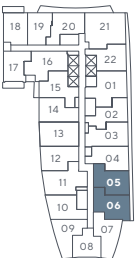
LIVE. PLAY. LAKE.

# LAKE SIDE

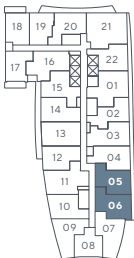
RESIDENCES



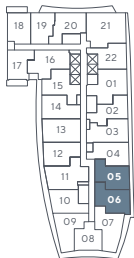
Park Suites –  
floor 2



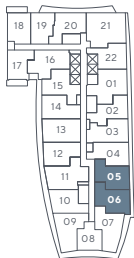
Park Suites –  
floor 3



Park Suites –  
floors 4-5



Park Suites –  
floors 6-7



Park Suites –  
floor 8



Park Suites –  
floors 9-13



Any stated areas and/or dimensions shown are approximate only and subject to normal construction variances. Actual usable floor space may vary from any stated or depicted floor area and the unit shall be measured in accordance with the provisions set out in Tarion Builder Bulletin 22. The layout of the suite may be reversed depending on the location of the unit within the project. Any furniture depicted is for illustration purposes only and does not necessarily reflect the fixtures, finishes, appliances, and/or electrical plan of the unit and is not included in the purchase price. Ceiling heights are subject to bulkheads, exposed ducts, dropped ceilings and structural beams, as applicable pursuant to the plans. The view from or through the windows to the exterior cladding of the building and may be partially obstructed by materials affixed to the exterior cladding of the building as part of the architectural design elements and/or interior structural columns that may be required pursuant to the recommendations of the project's engineers. Any and all materials, measurements, dimensions and/or specifications are subject to change without notice. All illustrations are artist's concept only. E. & O. E. April 2018.

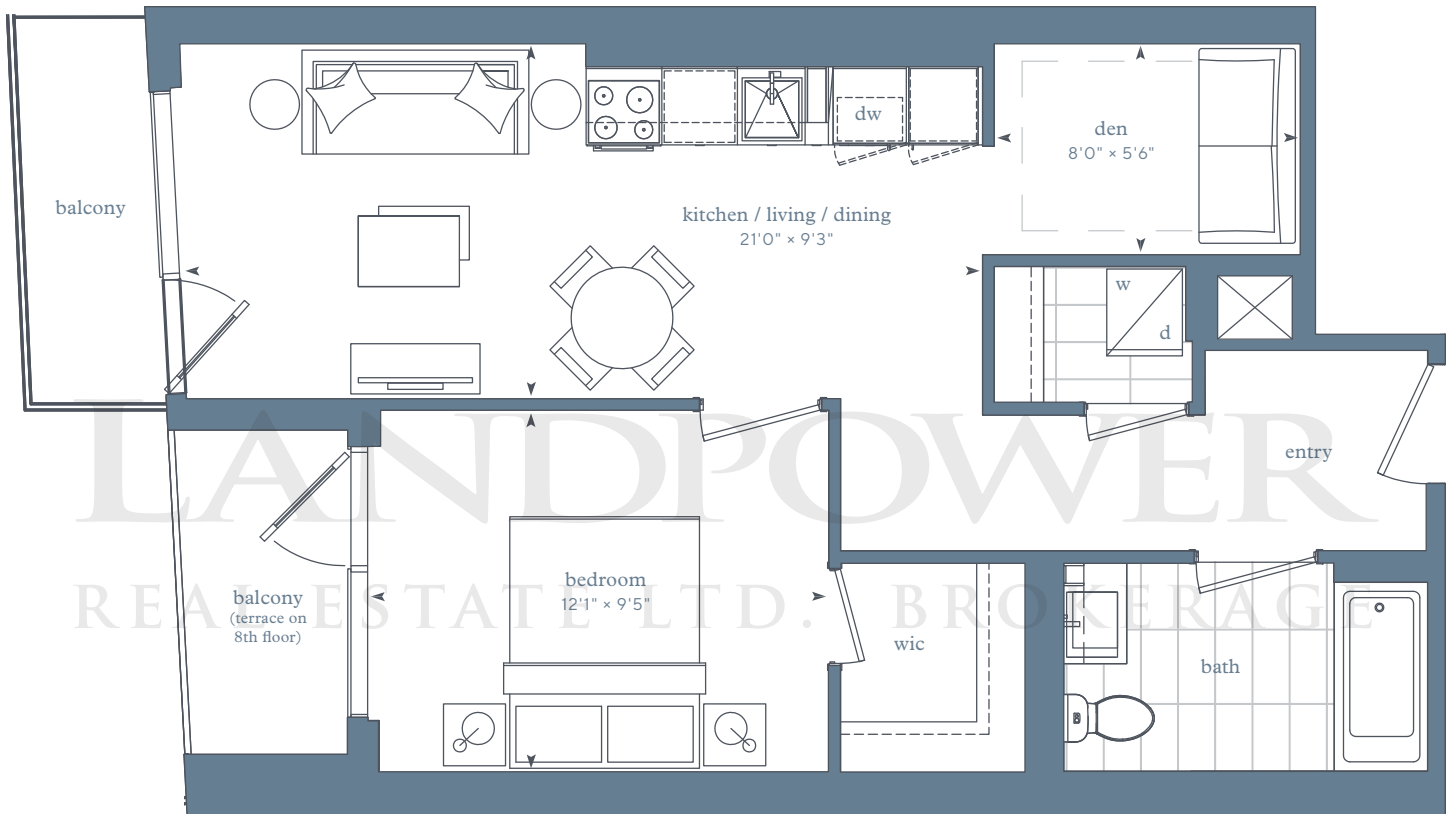


one-bedroom + den  
**Park Suites – 1DA**

interior area:  
 634 SF

exterior area:  
 MIN 83 SF  
 MAX 95 SF

LIVE. PLAY. LAKE.  
**LAKE SIDE**  
 RESIDENCES



terrace conditions will require  
 curbs and steps to access

**Park Suites –  
 floor 8**



**Park Suites –  
 floors 9-13**



**Park Suites –  
 floor 14**



**Park Suites –  
 floor 15**



Any stated areas and/or dimensions shown are approximate only and subject to normal construction variances. Actual usable floor space may vary from any stated or depicted floor area and the unit shall be measured in accordance with the provisions set out in Tarion Builder Bulletin 22. The layout of the suite may be reversed depending on the location of the unit within the project. Any furniture depicted is for illustration purposes only and does not necessarily reflect the fixtures, finishes, appliances, and/or electrical plan of the unit and is not included in the purchase price. Ceiling heights are subject to bulkheads, exposed ducts, dropped ceilings and structural beams, as applicable pursuant to the plans. The view from or through the windows to the exterior cladding of the building and may be partially obstructed by materials affixed to the exterior cladding of the building as part of the architectural design elements and/or interior structural columns that may be required pursuant to the recommendations of the project's engineers. Any and all materials, measurements, dimensions and/or specifications are subject to change without notice. All illustrations are artist's concept only. E. & O. E. April 2018.



one-bedroom + den

## Park Suites – 1DC

interior area:

655 SF / Suite 16, 09, 05

exterior area:

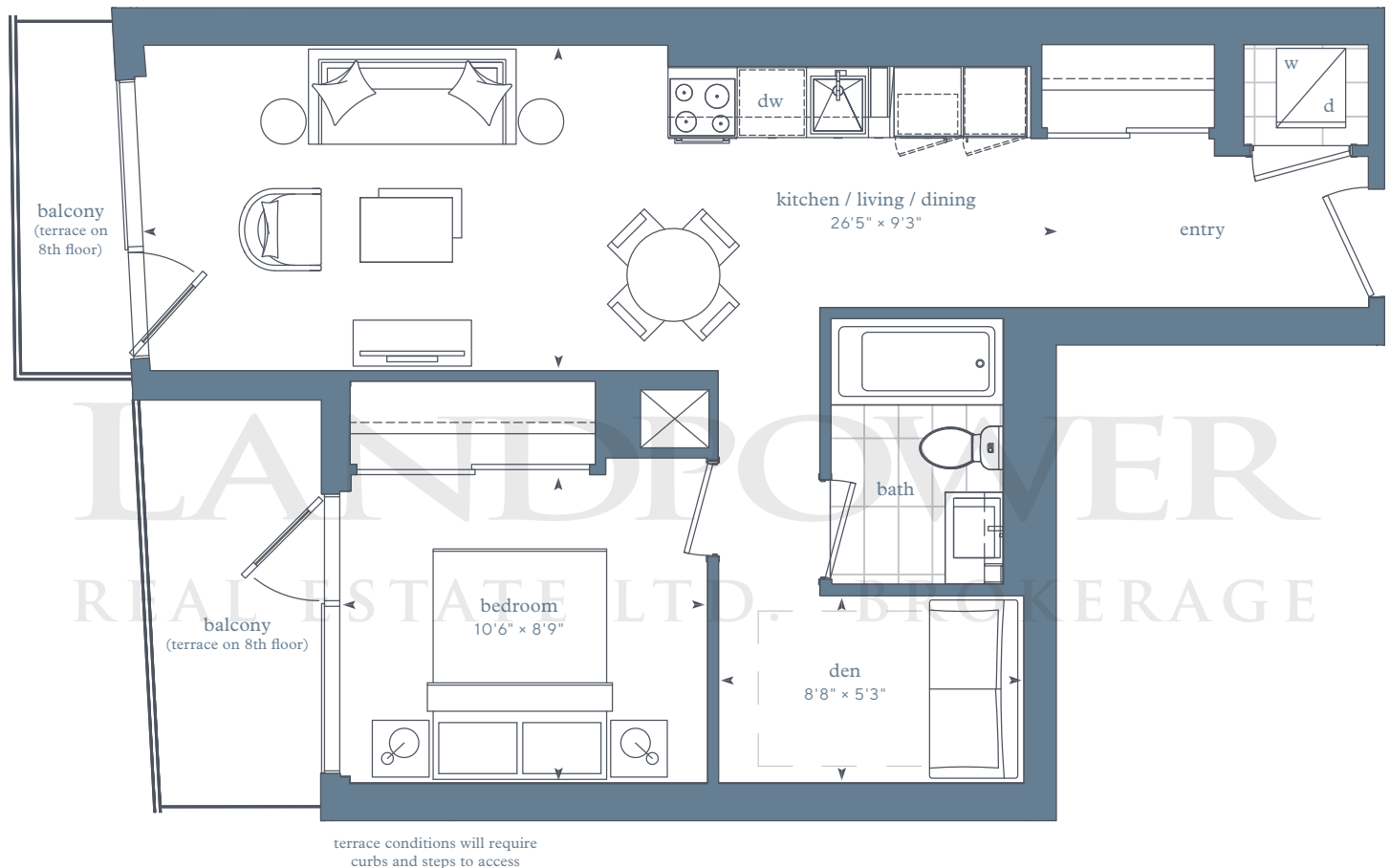
MIN 88 SF

MAX 115 SF

LIVE. PLAY. LAKE.

# LAKE SIDE

RESIDENCES



Park Suites – floor 8



Park Suites – floors 9-13



Park Suites – floor 14



Park Suites – floor 15



Any stated areas and/or dimensions shown are approximate only and subject to normal construction variances. Actual usable floor space may vary from any stated or depicted floor area and the unit shall be measured in accordance with the provisions set out in Tarion Builder Bulletin 22. The layout of the suite may be reversed depending on the location of the unit within the project. Any furniture depicted is for illustration purposes only and does not necessarily reflect the fixtures, finishes, appliances, and/or electrical plan of the unit and is not included in the purchase price. Ceiling heights are subject to bulkheads, exposed ducts, dropped ceilings and structural beams, as applicable pursuant to the plans. The view from or through the windows to the exterior cladding of the building and may be partially obstructed by materials affixed to the exterior cladding of the building as part of the architectural design elements and/or interior structural columns that may be required pursuant to the recommendations of the project's engineers. Any and all materials, measurements, dimensions and/or specifications are subject to change without notice. All illustrations are artist's concept only. E. & O. E. April 2018.



one-bedroom + den

## Park Suites – 1DE+

interior area:

666 SF / Suite 03

exterior area:

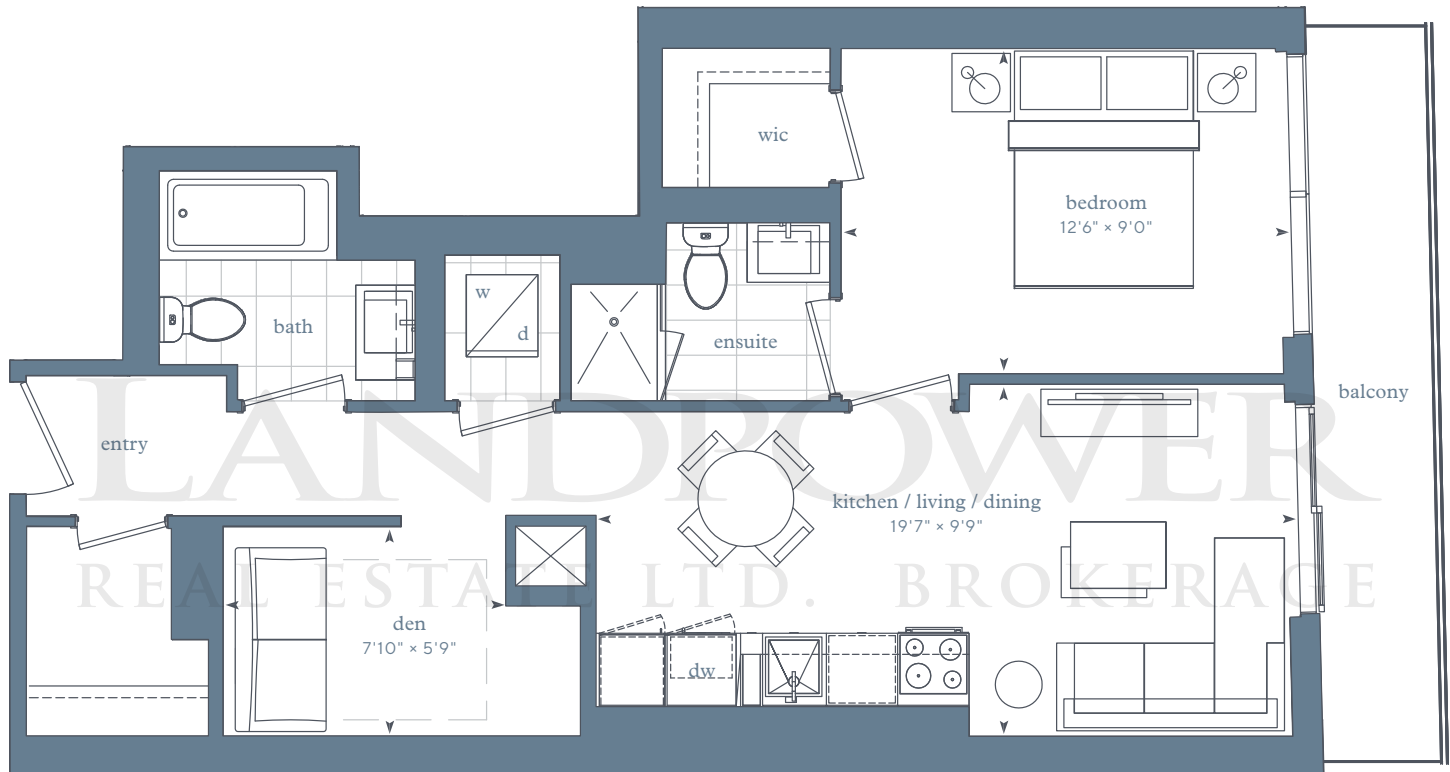
MIN 59 SF

MAX 71 SF

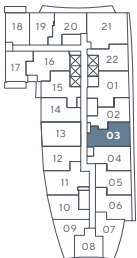
LIVE. PLAY. LAKE.

# LAKE SIDE

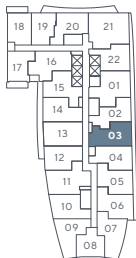
RESIDENCES



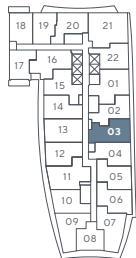
Park Suites –  
floor 2



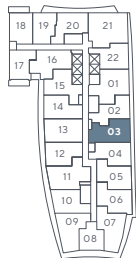
Park Suites –  
floor 3



Park Suites –  
floors 4-5



Park Suites –  
floors 6-7



Any stated areas and/or dimensions shown are approximate only and subject to normal construction variances. Actual usable floor space may vary from any stated or depicted floor area and the unit shall be measured in accordance with the provisions set out in Tarion Builder Bulletin 22. The layout of the suite may be reversed depending on the location of the unit within the project. Any furniture depicted is for illustration purposes only and does not necessarily reflect the fixtures, finishes, appliances, and/or electrical plan of the unit and is not included in the purchase price. Ceiling heights are subject to bulkheads, exposed ducts, dropped ceilings and structural beams, as applicable pursuant to the plans. The view from or through the windows to the exterior cladding of the building and may be partially obstructed by materials affixed to the exterior cladding of the building as part of the architectural design elements and/or interior structural columns that may be required pursuant to the recommendations of the project's engineers. Any and all materials, measurements, dimensions and/or specifications are subject to change without notice. All illustrations are artist's concept only. E. & O. E. April 2018.



one-bedroom + den

## Park Suites – 1DI

interior area:

670 SF / Suite 15

exterior area:

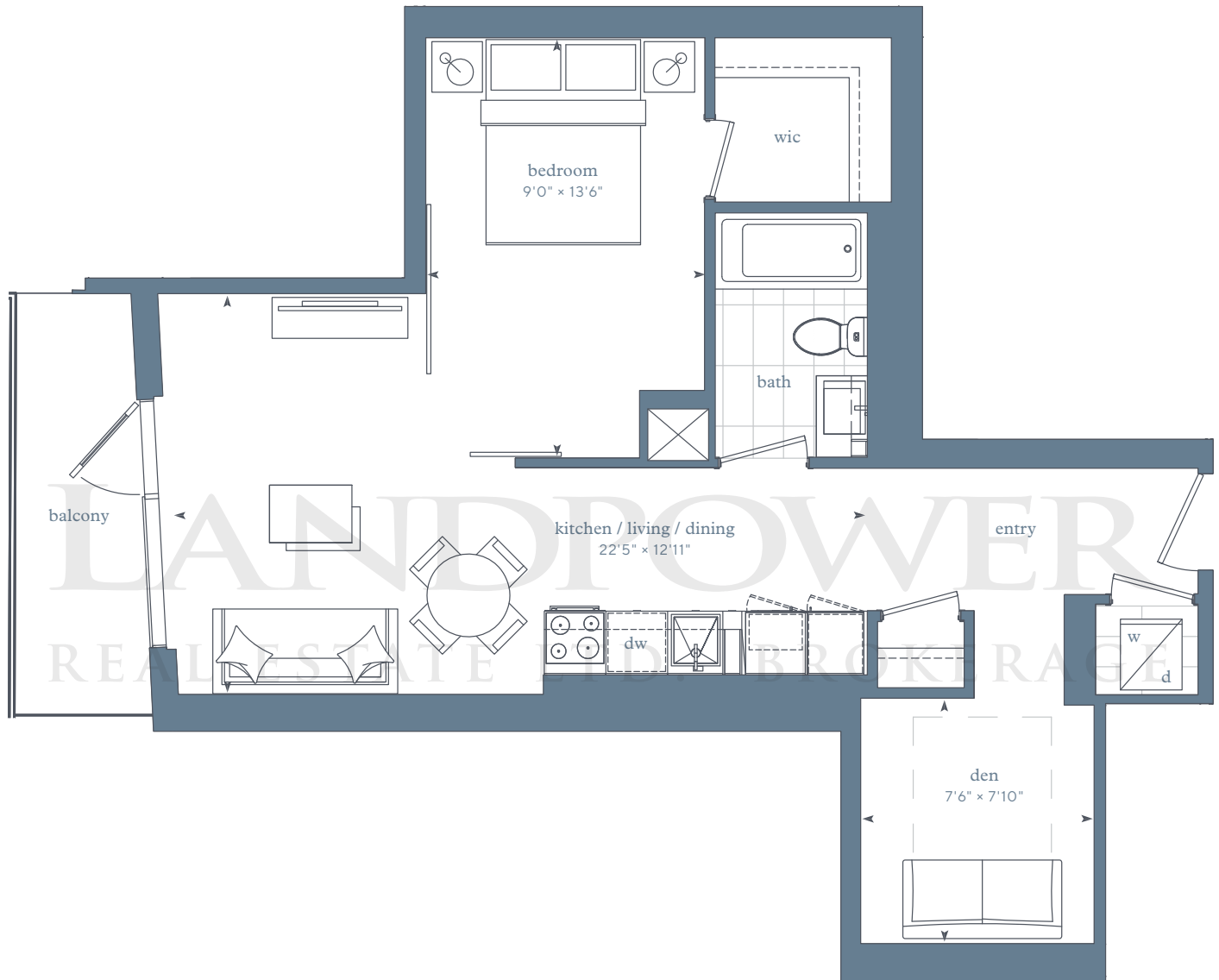
MIN 43 SF

MAX 56 SF

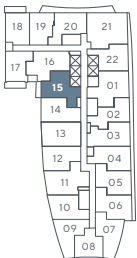
LIVE. PLAY. LAKE.

# LAKE SIDE

RESIDENCES



Park Suites –  
floor 2



Park Suites –  
floor 3



Park Suites –  
floors 4-5



Park Suites –  
floors 6-7



Any stated areas and/or dimensions shown are approximate only and subject to normal construction variances. Actual usable floor space may vary from any stated or depicted floor area and the unit shall be measured in accordance with the provisions set out in Tarion Builder Bulletin 22. The layout of the suite may be reversed depending on the location of the unit within the project. Any furniture depicted is for illustration purposes only and does not necessarily reflect the fixtures, finishes, appliances, and/or electrical plan of the unit and is not included in the purchase price. Ceiling heights are subject to bulkheads, exposed ducts, dropped ceilings and structural beams, as applicable pursuant to the plans. The view from or through the windows to the exterior cladding of the building and may be partially obstructed by materials affixed to the exterior cladding of the building as part of the architectural design elements and/or interior structural columns that may be required pursuant to the recommendations of the project's engineers. Any and all materials, measurements, dimensions and/or specifications are subject to change without notice. All illustrations are artist's concept only. E. & O. E. April 2018.



one-bedroom + two-den

## Park Suites – 10G

interior area:

683 SF / Suite 05

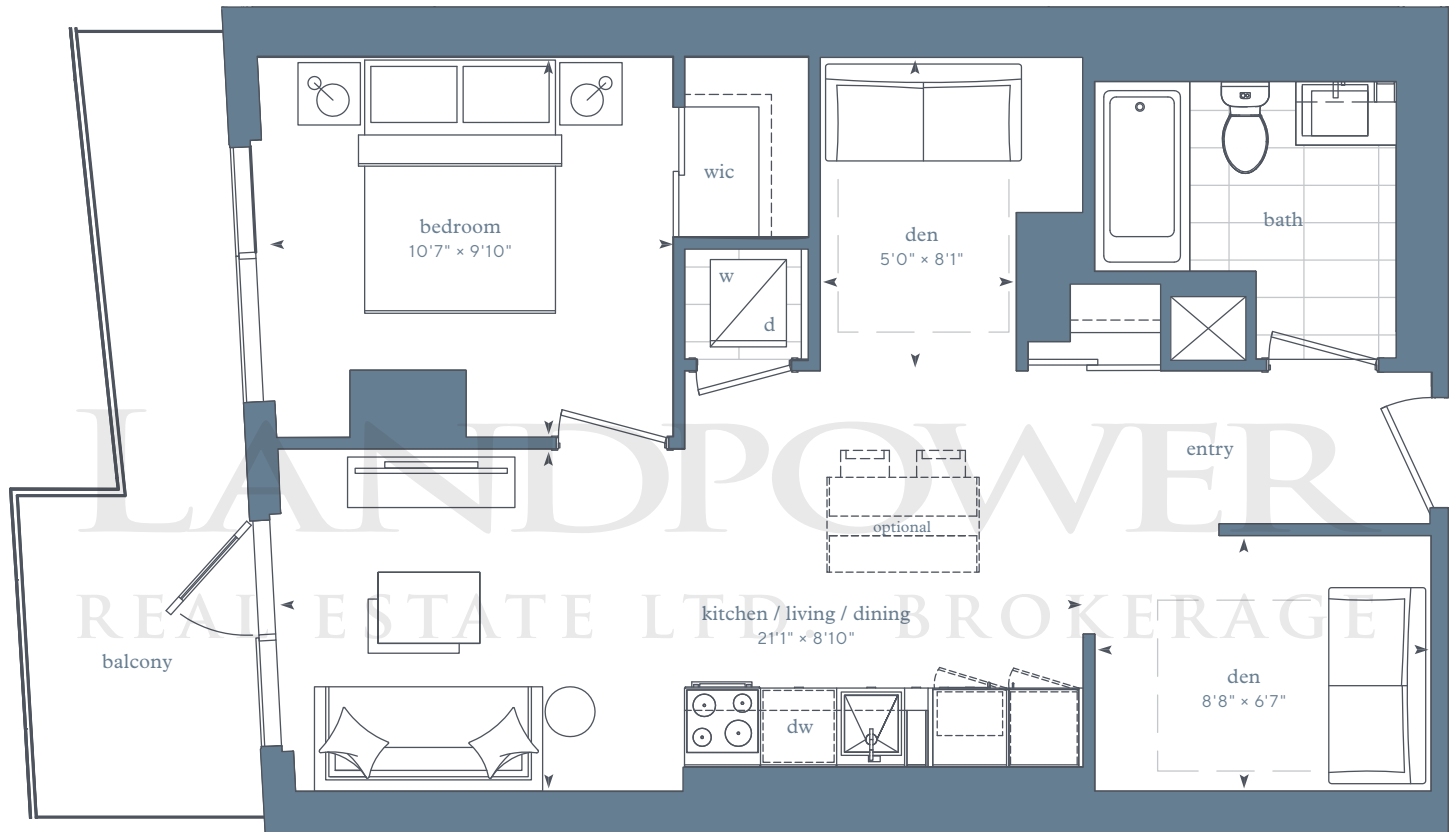
exterior area:

99 SF

LIVE. PLAY. LAKE.

## LAKE SIDE

RESIDENCES



### Park Suites – floor 14



Any stated areas and/or dimensions shown are approximate only and subject to normal construction variances. Actual usable floor space may vary from any stated or depicted floor area and the unit shall be measured in accordance with the provisions set out in Tarion Builder Bulletin 22. The layout of the suite may be reversed depending on the location of the unit within the project. Any furniture depicted is for illustration purposes only and does not necessarily reflect the fixtures, finishes, appliances, and/or electrical plan of the unit and is not included in the purchase price. Ceiling heights are subject to bulkheads, exposed ducts, dropped ceilings and structural beams, as applicable pursuant to the plans. The view from or through the windows to the exterior cladding of the building and may be partially obstructed by materials affixed to the exterior cladding of the building as part of the architectural design elements and/or interior structural columns that may be required pursuant to the recommendations of the project's engineers. Any and all materials, measurements, dimensions and/or specifications are subject to change without notice. All illustrations are artist's concept only. E. & O. E. April 2018.





one-bedroom + two-den

## Park Suites – 1OB+

interior area:

685 SF / Suite 13, 06 (690 SF on 8th floor + above)

exterior area (if available):

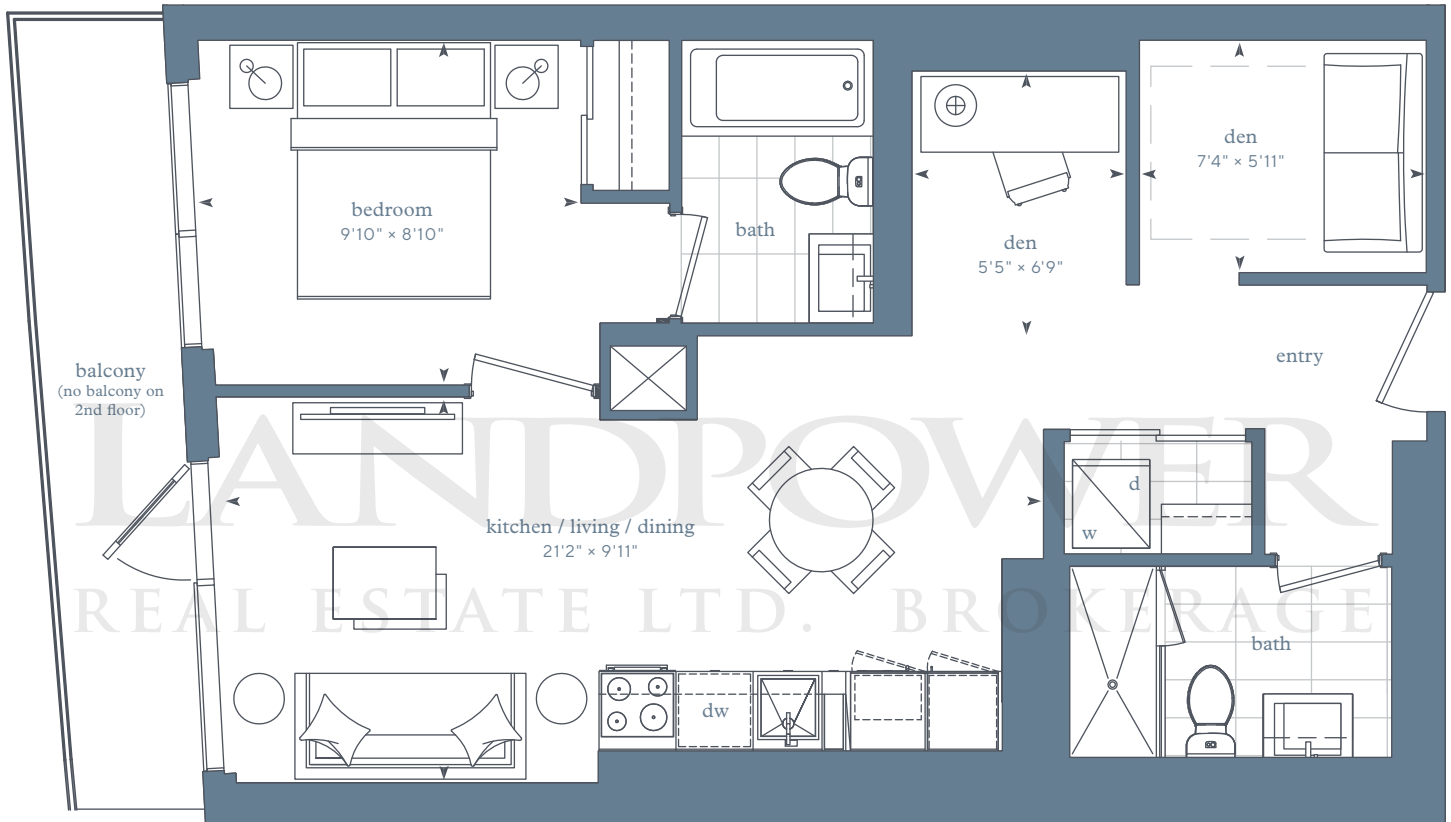
MIN 80 SF

MAX 112 SF

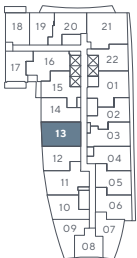
LIVE. PLAY. LAKE.

# LAKE SIDE

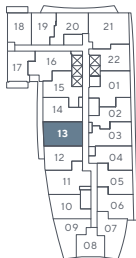
RESIDENCES



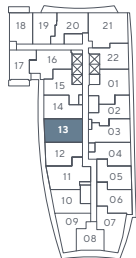
Park Suites –  
floor 2



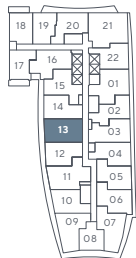
Park Suites –  
floor 3



Park Suites –  
floors 4-5



Park Suites –  
floors 6-7



Park Suites –  
floor 8



Park Suites –  
floors 9-13



Park Suites –  
floor 14



Any stated areas and/or dimensions shown are approximate only and subject to normal construction variances. Actual usable floor space may vary from any stated or depicted floor area and the unit shall be measured in accordance with the provisions set out in Tarion Builder Bulletin 22. The layout of the suite may be reversed depending on the location of the unit within the project. Any furniture depicted is for illustration purposes only and does not necessarily reflect the fixtures, finishes, appliances, and/or electrical plan of the unit and is not included in the purchase price. Ceiling heights are subject to bulkheads, exposed ducts, dropped ceilings and structural beams, as applicable pursuant to the plans. The view from or through the windows to the exterior cladding of the building and may be partially obstructed by materials affixed to the exterior cladding of the building as part of the architectural design elements and/or interior structural columns that may be required pursuant to the recommendations of the project's engineers. Any and all materials, measurements, dimensions and/or specifications are subject to change without notice. All illustrations are artist's concept only. E. & O. E. April 2018.



one-bedroom + two-den

## Park Suites – 10C

interior area:

696 SF / Suite 16

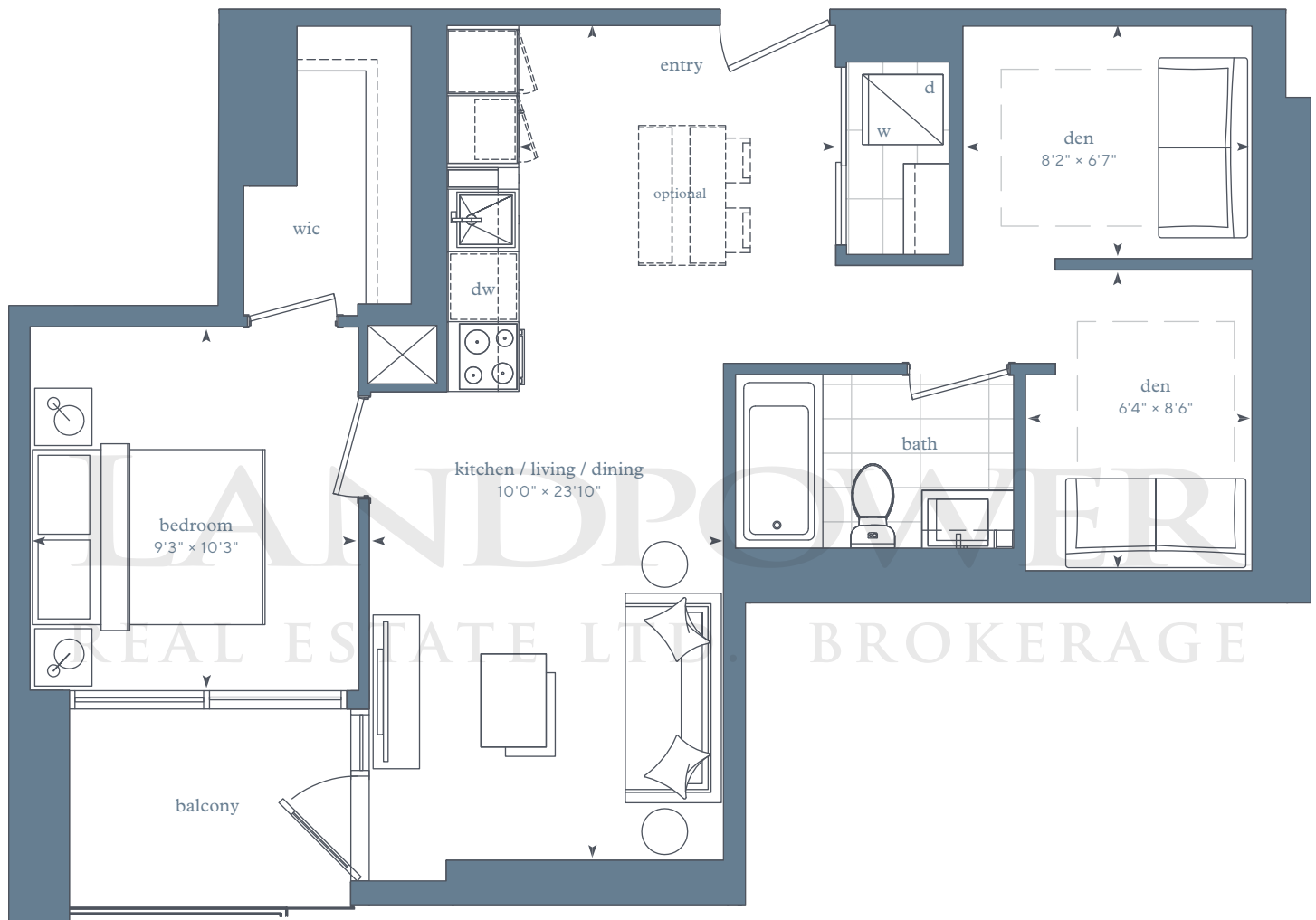
exterior area:

46 SF

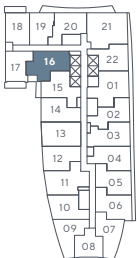
LIVE. PLAY. LAKE.

## LAKE SIDE

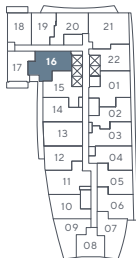
RESIDENCES



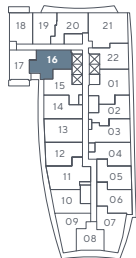
Park Suites –  
floor 2



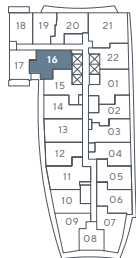
Park Suites –  
floor 3



Park Suites –  
floors 4-5



Park Suites –  
floors 6-7



Any stated areas and/or dimensions shown are approximate only and subject to normal construction variances. Actual usable floor space may vary from any stated or depicted floor area and the unit shall be measured in accordance with the provisions set out in Tarion Builder Bulletin 22. The layout of the suite may be reversed depending on the location of the unit within the project. Any furniture depicted is for illustration purposes only and does not necessarily reflect the fixtures, finishes, appliances, and/or electrical plan of the unit and is not included in the purchase price. Ceiling heights are subject to bulkheads, exposed ducts, dropped ceilings and structural beams, as applicable pursuant to the plans. The view from or through the windows to the exterior cladding of the building and may be partially obstructed by materials affixed to the exterior cladding of the building as part of the architectural design elements and/or interior structural columns that may be required pursuant to the recommendations of the project's engineers. Any and all materials, measurements, dimensions and/or specifications are subject to change without notice. All illustrations are artist's concept only. E. & O. E. April 2018.



one-bedroom + two-den

## Park Suites – 10E+

interior area:

789–803 SF / Suite 11

exterior area (if available):

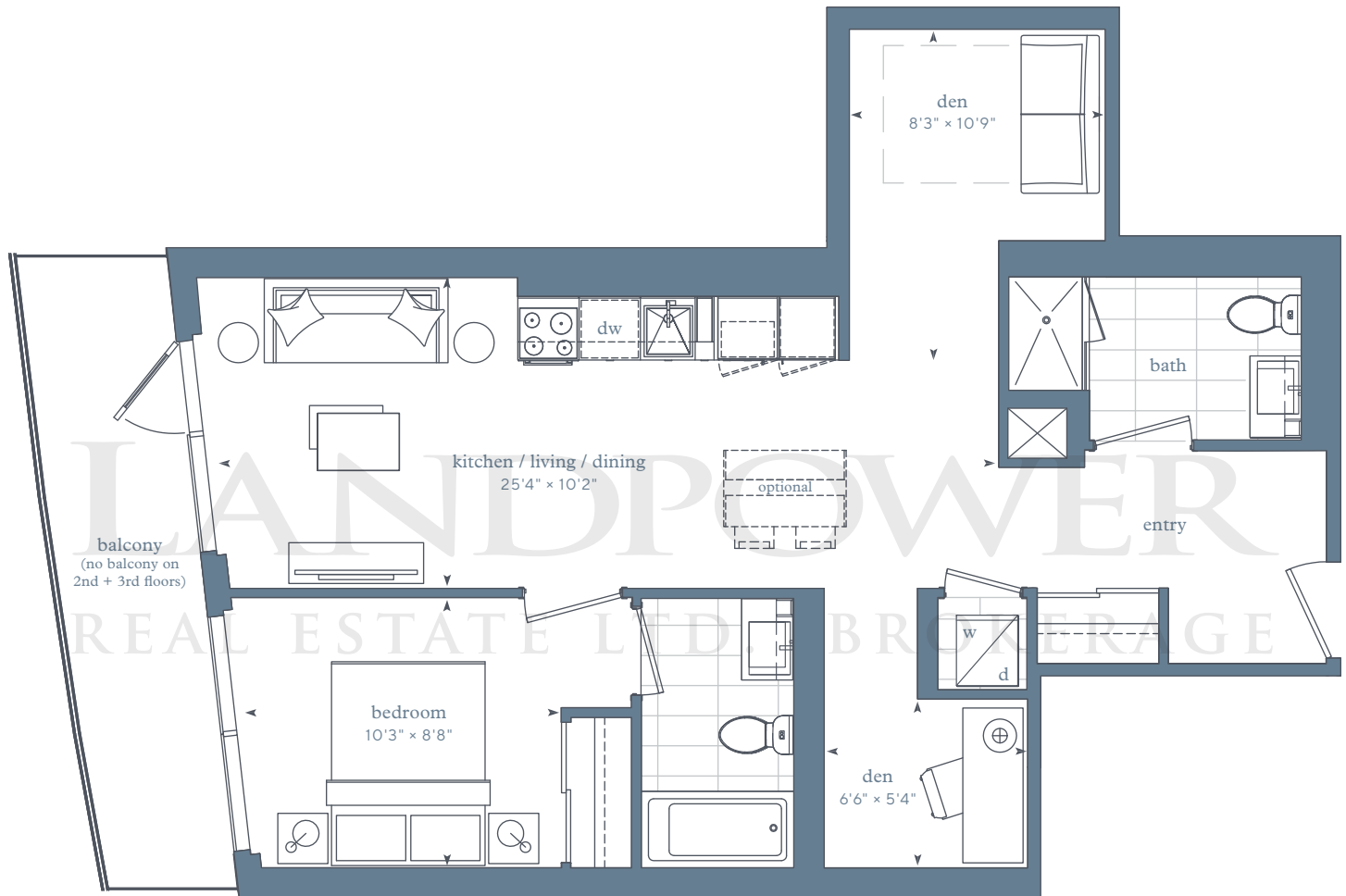
MIN 89 SF

MAX 117 SF

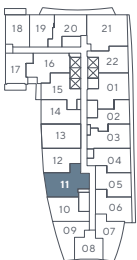
LIVE. PLAY. LAKE.

# LAKE SIDE

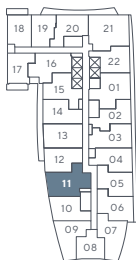
RESIDENCES



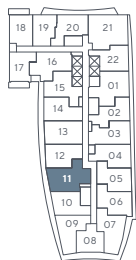
Park Suites –  
floor 2



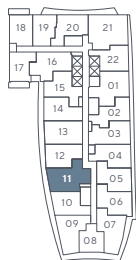
Park Suites –  
floor 3



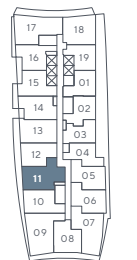
Park Suites –  
floors 4-5



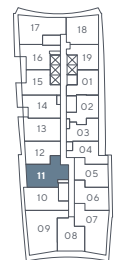
Park Suites –  
floors 6-7



Park Suites –  
floor 8



Park Suites –  
floors 9-13



Any stated areas and/or dimensions shown are approximate only and subject to normal construction variances. Actual usable floor space may vary from any stated or depicted floor area and the unit shall be measured in accordance with the provisions set out in Tarion Builder Bulletin 22. The layout of the suite may be reversed depending on the location of the unit within the project. Any furniture depicted is for illustration purposes only and does not necessarily reflect the fixtures, finishes, appliances, and/or electrical plan of the unit and is not included in the purchase price. Ceiling heights are subject to bulkheads, exposed ducts, dropped ceilings and structural beams, as applicable pursuant to the plans. The view from or through the windows to the exterior cladding of the building and may be partially obstructed by materials affixed to the exterior cladding of the building as part of the architectural design elements and/or interior structural columns that may be required pursuant to the recommendations of the project's engineers. Any and all materials, measurements, dimensions and/or specifications are subject to change without notice. All illustrations are artist's concept only. E. & O. E. April 2018.



one-bedroom + two-den

## Park Suites – 10A+

interior area:

799 SF / Suite 01

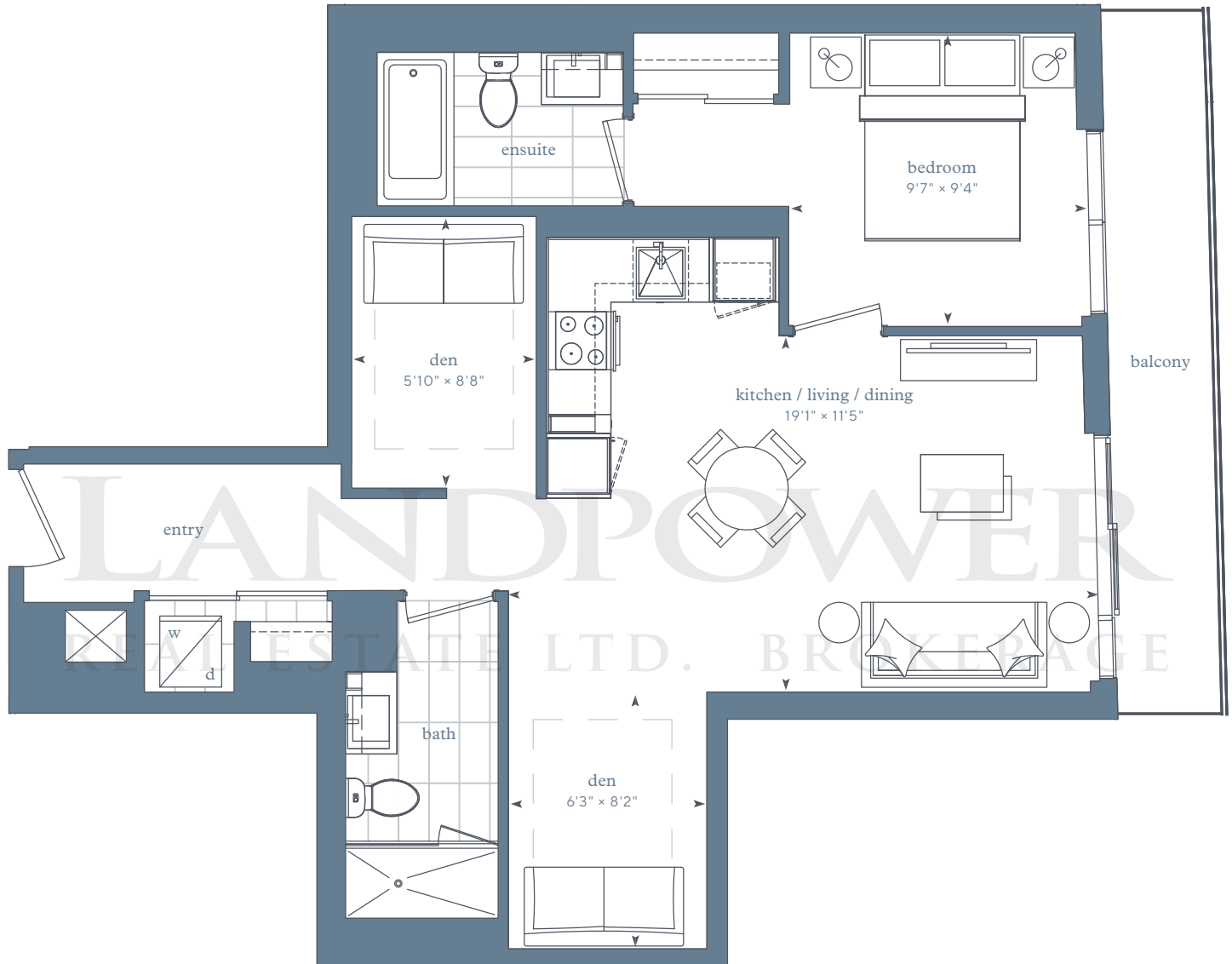
exterior area:

79 SF

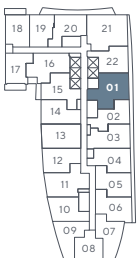
LIVE. PLAY. LAKE.

# LAKE SIDE

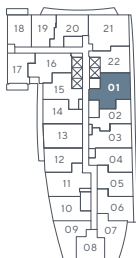
RESIDENCES



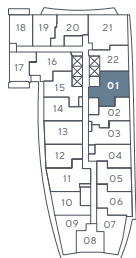
Park Suites –  
floor 2



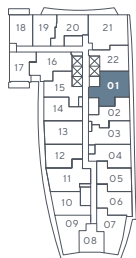
Park Suites –  
floor 3



Park Suites –  
floors 4-5



Park Suites –  
floors 6-7



Any stated areas and/or dimensions shown are approximate only and subject to normal construction variances. Actual usable floor space may vary from any stated or depicted floor area and the unit shall be measured in accordance with the provisions set out in Tarion Builder Bulletin 22. The layout of the suite may be reversed depending on the location of the unit within the project. Any furniture depicted is for illustration purposes only and does not necessarily reflect the fixtures, finishes, appliances, and/or electrical plan of the unit and is not included in the purchase price. Ceiling heights are subject to bulkheads, exposed ducts, dropped ceilings and structural beams, as applicable pursuant to the plans. The view from or through the windows to the exterior cladding of the building and may be partially obstructed by materials affixed to the exterior cladding of the building as part of the architectural design elements and/or interior structural columns that may be required pursuant to the recommendations of the project's engineers. Any and all materials, measurements, dimensions and/or specifications are subject to change without notice. All illustrations are artist's concept only. E. & O. E. April 2018.



two-bedroom

## Park Suites – 2A

interior area:

735 SF / Suite 18, 11, 07

exterior area:

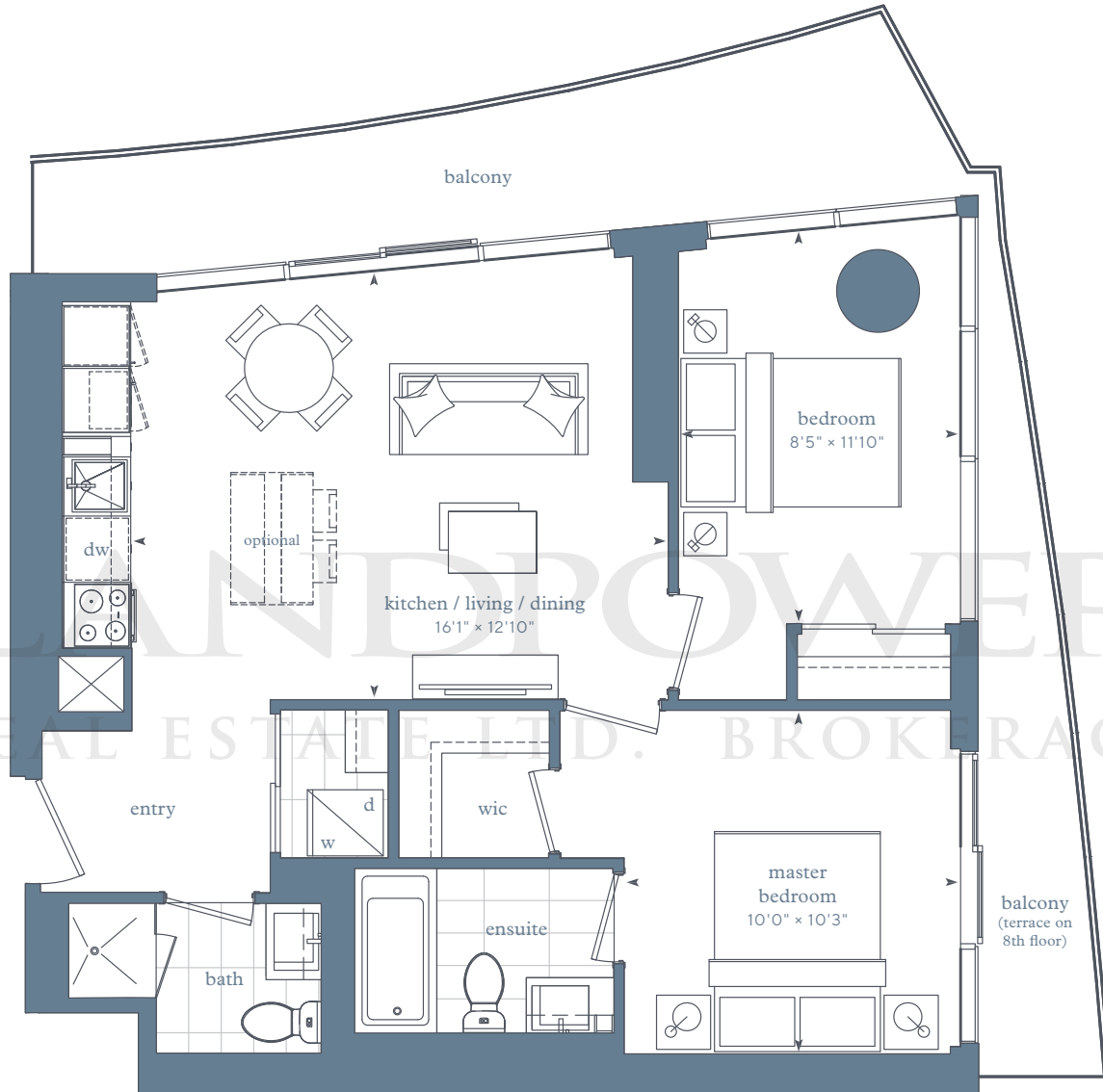
MIN 214 SF

MAX 401 SF

LIVE. PLAY. LAKE.

# LAKE SIDE

RESIDENCES



Park Suites –  
floor 8



Park Suites –  
floors 9-13



Park Suites –  
floor 14



Park Suites –  
floor 15



terrace conditions will require  
curbs and steps to access

Any stated areas and/or dimensions shown are approximate only and subject to normal construction variances. Actual usable floor space may vary from any stated or depicted floor area and the unit shall be measured in accordance with the provisions set out in Tarion Builder Bulletin 22. The layout of the suite may be reversed depending on the location of the unit within the project. Any furniture depicted is for illustration purposes only and does not necessarily reflect the fixtures, finishes, appliances, and/or electrical plan of the unit and is not included in the purchase price. Ceiling heights are subject to bulkheads, exposed ducts, dropped ceilings and structural beams, as applicable pursuant to the plans. The view from or through the windows to the exterior cladding of the building and may be partially obstructed by materials affixed to the exterior cladding of the building as part of the architectural design elements and/or interior structural columns that may be required pursuant to the recommendations of the project's engineers. Any and all materials, measurements, dimensions and/or specifications are subject to change without notice. All illustrations are artist's concept only. E. & O. E. April 2018.



three-bedroom

## Park Suites – 3C

interior area:

877 SF / Suite 10, 06

exterior area:

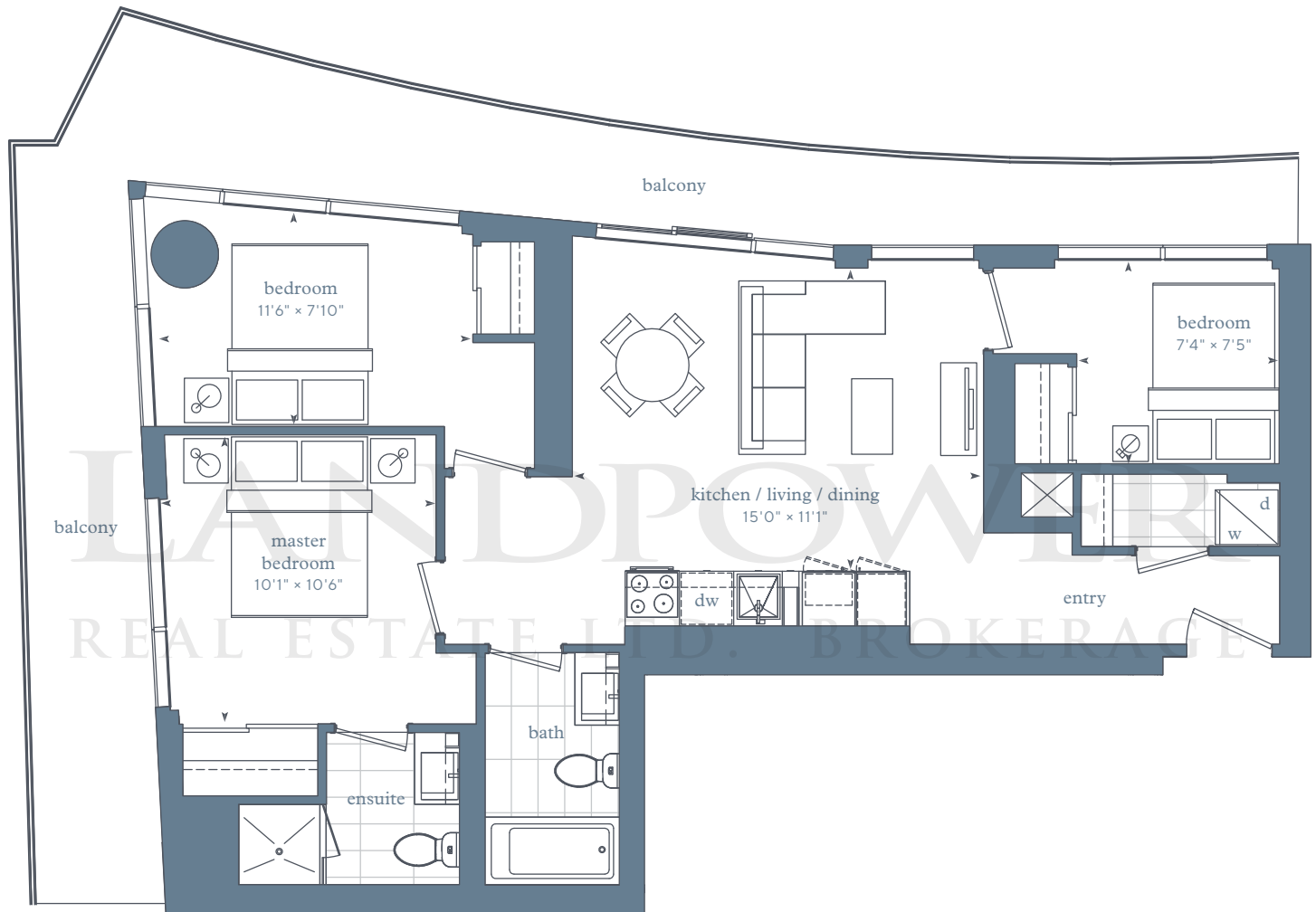
MIN 318 SF

MAX 329 SF

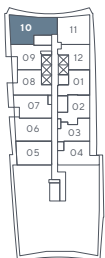
LIVE. PLAY. LAKE.

## LAKE SIDE

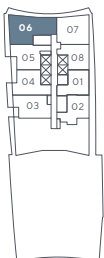
RESIDENCES



Park Suites –  
floor 14



Park Suites –  
floor 15



Any stated areas and/or dimensions shown are approximate only and subject to normal construction variances. Actual usable floor space may vary from any stated or depicted floor area and the unit shall be measured in accordance with the provisions set out in Tarion Builder Bulletin 22. The layout of the suite may be reversed depending on the location of the unit within the project. Any furniture depicted is for illustration purposes only and does not necessarily reflect the fixtures, finishes, appliances, and/or electrical plan of the unit and is not included in the purchase price. Ceiling heights are subject to bulkheads, exposed ducts, dropped ceilings and structural beams, as applicable pursuant to the plans. The view from or through the windows to the exterior cladding of the building and may be partially obstructed by materials affixed to the exterior cladding of the building as part of the architectural design elements and/or interior structural columns that may be required pursuant to the recommendations of the project's engineers. Any and all materials, measurements, dimensions and/or specifications are subject to change without notice. All illustrations are artist's concept only. E. & O. E. April 2018.

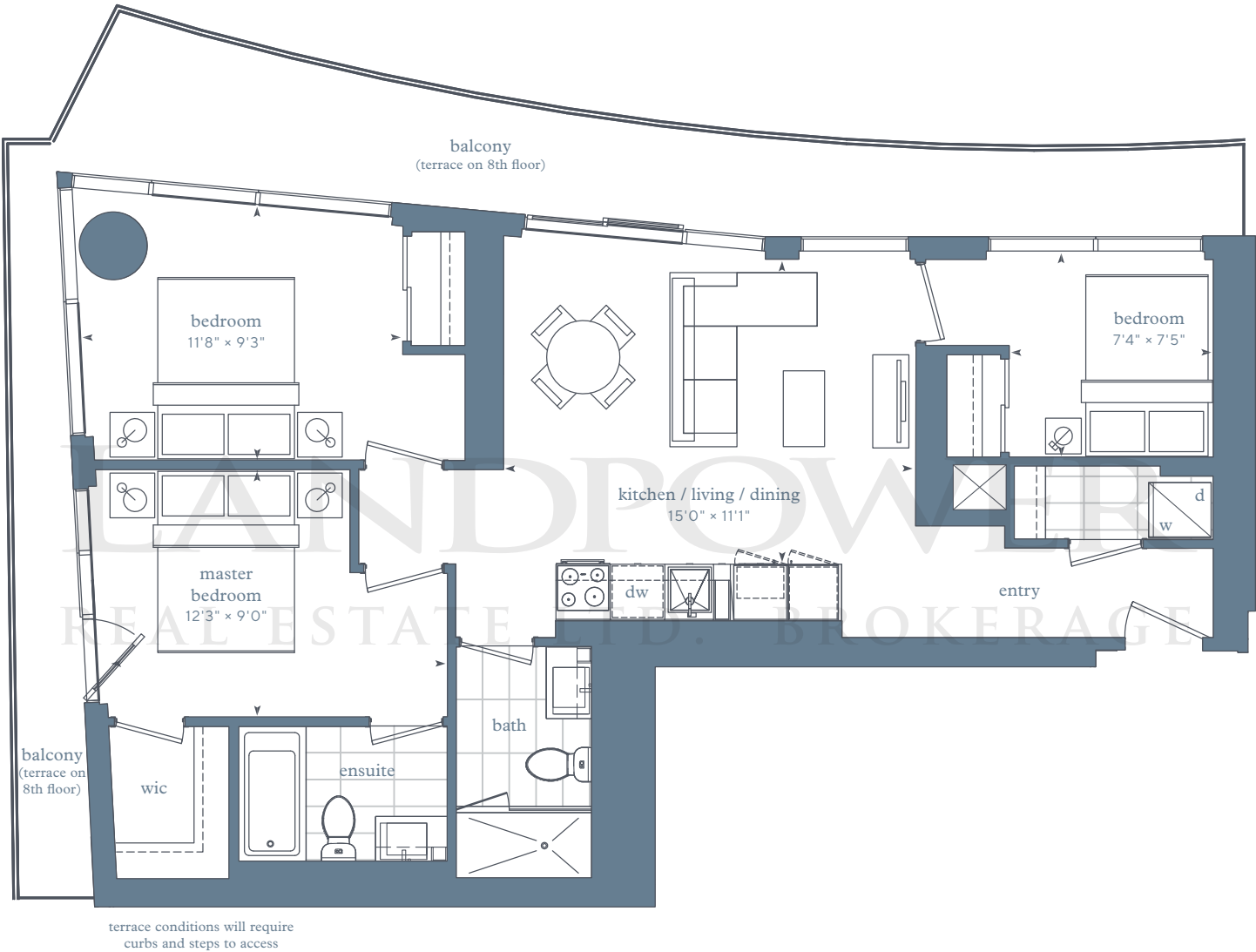


three-bedroom  
Park Suites – 3C

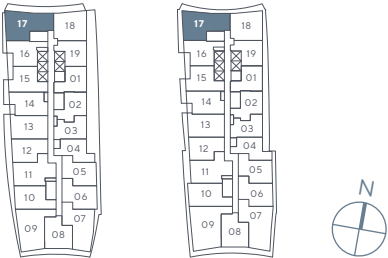
interior area:  
891 SF / Suite 17

exterior area:  
MIN 265 SF  
MAX 317 SF

LIVE. PLAY. LAKE.  
LAKESIDE  
RESIDENCES



Park Suites – floor 8      Park Suites – floors 9-13



Any stated areas and/or dimensions shown are approximate only and subject to normal construction variances. Actual usable floor space may vary from any stated or depicted floor area and the unit shall be measured in accordance with the provisions set out in Tarion Builder Bulletin 22. The layout of the suite may be reversed depending on the location of the unit within the project. Any furniture depicted is for illustration purposes only and does not necessarily reflect the fixtures, finishes, appliances, and/or electrical plan of the unit and is not included in the purchase price. Ceiling heights are subject to bulkheads, exposed ducts, dropped ceilings and structural beams, as applicable pursuant to the plans. The view from or through the windows to the exterior cladding of the building and may be partially obstructed by materials affixed to the exterior cladding of the building as part of the architectural design elements and/or interior structural columns that may be required pursuant to the recommendations of the project's engineers. Any and all materials, measurements, dimensions and/or specifications are subject to change without notice. All illustrations are artist's concept only. E. & O. E. April 2018.

three-bedroom + den

## Park Suites – 3D

interior area:

991 SF / Suite 21

exterior area:

MIN 180 SF

MAX 205 SF

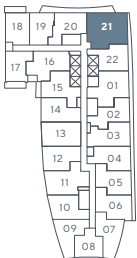
LIVE. PLAY. LAKE.

# LAKE SIDE

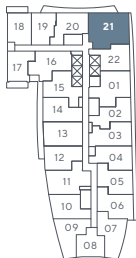
RESIDENCES



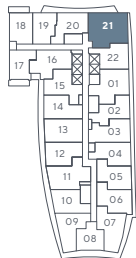
Park Suites –  
floor 2



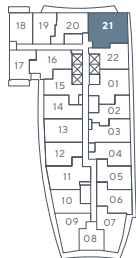
Park Suites –  
floor 3



Park Suites –  
floors 4-5



Park Suites –  
floors 6-7



Any stated areas and/or dimensions shown are approximate only and subject to normal construction variances. Actual usable floor space may vary from any stated or depicted floor area and the unit shall be measured in accordance with the provisions set out in Tarion Builder Bulletin 22. The layout of the suite may be reversed depending on the location of the unit within the project. Any furniture depicted is for illustration purposes only and does not necessarily reflect the fixtures, finishes, appliances, and/or electrical plan of the unit and is not included in the purchase price. Ceiling heights are subject to bulkheads, exposed ducts, dropped ceilings and structural beams, as applicable pursuant to the plans. The view from or through the windows to the exterior cladding of the building and may be partially obstructed by materials affixed to the exterior cladding of the building as part of the architectural design elements and/or interior structural columns that may be required pursuant to the recommendations of the project's engineers. Any and all materials, measurements, dimensions and/or specifications are subject to change without notice. All illustrations are artist's concept only. E. & O. E. April 2018.





one-bedroom + media

## Sky Suites – 1MA

interior area:

516 SF / Suite 10

exterior area:

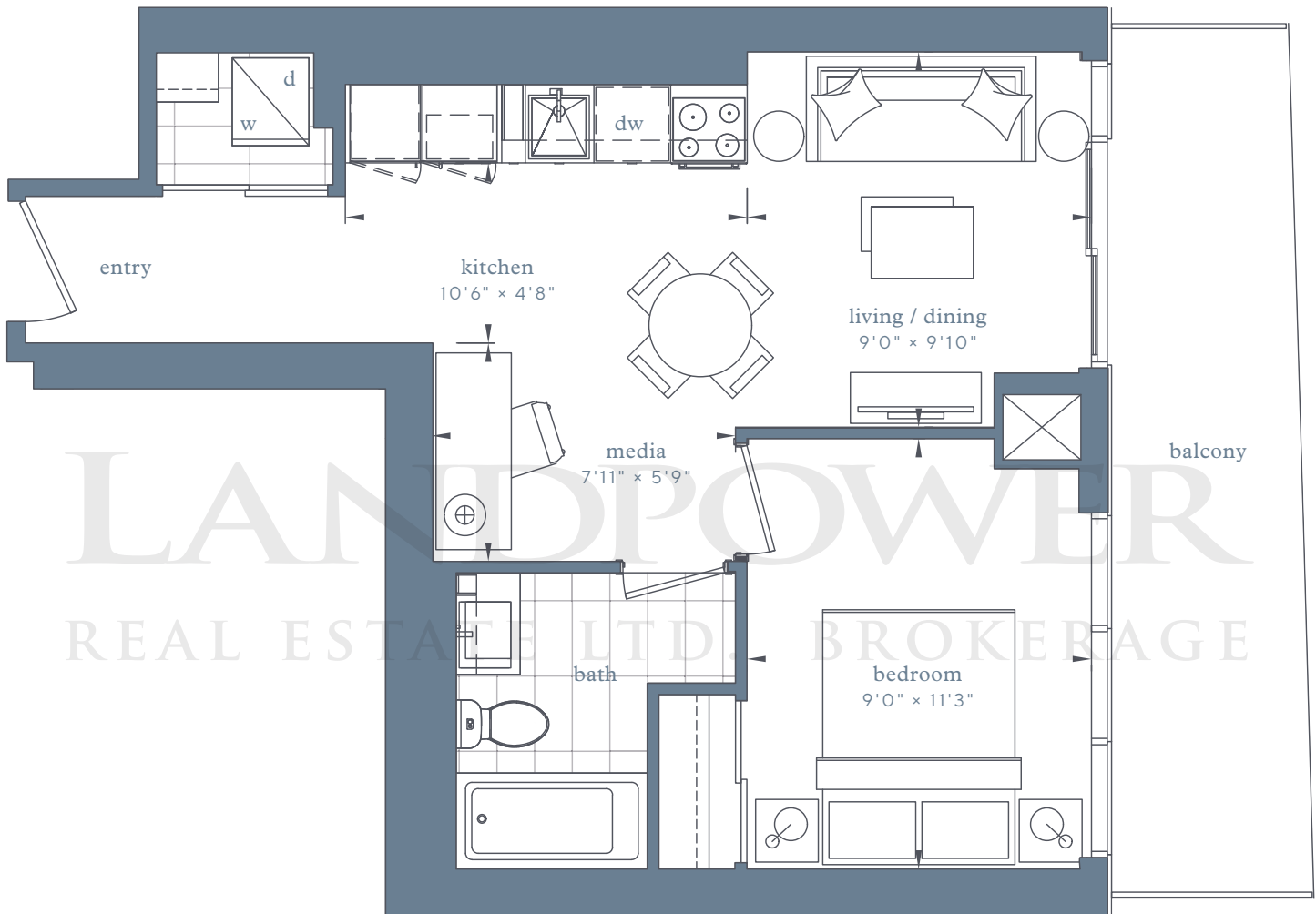
MIN 127 SF

MAX 148 SF

LIVE. PLAY. LAKE.

## LAKE SIDE

RESIDENCES



Sky Suites –  
floors 16-24



Sky Suites –  
floors 25-39



Any stated areas and/or dimensions shown are approximate only and subject to normal construction variances. Actual usable floor space may vary from any stated or depicted floor area and the unit shall be measured in accordance with the provisions set out in Tarion Builder Bulletin 22. The layout of the suite may be reversed depending on the location of the unit within the project. Any furniture depicted is for illustration purposes only and does not necessarily reflect the fixtures, finishes, appliances, and/or electrical plan of the unit and is not included in the purchase price. Ceiling heights are subject to bulkheads, exposed ducts, dropped ceilings and structural beams, as applicable pursuant to the plans. The view from or through the windows to the exterior cladding of the building and may be partially obstructed by materials affixed to the exterior cladding of the building as part of the architectural design elements and/or interior structural columns that may be required pursuant to the recommendations of the project's engineers. Any and all materials, measurements, dimensions and/or specifications are subject to change without notice. All illustrations are artist's concept only. E. & O. E. October 2017.



one-bedroom + media

## Sky Suites – 1M

interior area:

529 SF / Suite 01

exterior area:

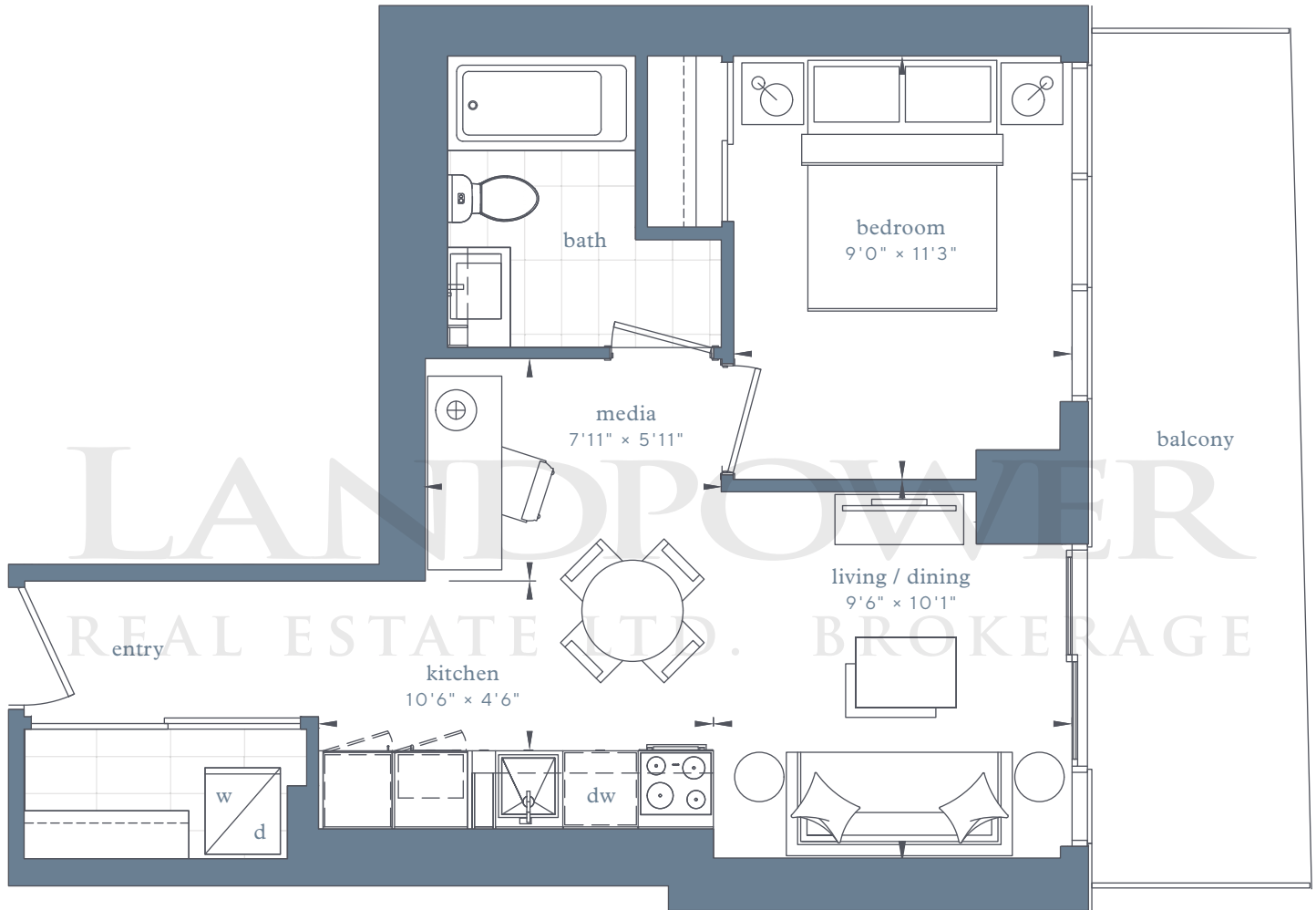
MIN 139 SF

MAX 155 SF

LIVE. PLAY. LAKE.

## LAKE SIDE

RESIDENCES



Sky Suites –  
floors 16-24



Sky Suites –  
floors 25-39



Any stated areas and/or dimensions shown are approximate only and subject to normal construction variances. Actual usable floor space may vary from any stated or depicted floor area and the unit shall be measured in accordance with the provisions set out in Tarion Builder Bulletin 22. The layout of the suite may be reversed depending on the location of the unit within the project. Any furniture depicted is for illustration purposes only and does not necessarily reflect the fixtures, finishes, appliances, and/or electrical plan of the unit and is not included in the purchase price. Ceiling heights are subject to bulkheads, exposed ducts, dropped ceilings and structural beams, as applicable pursuant to the plans. The view from or through the windows to the exterior cladding of the building and may be partially obstructed by materials affixed to the exterior cladding of the building as part of the architectural design elements and/or interior structural columns that may be required pursuant to the recommendations of the project's engineers. Any and all materials, measurements, dimensions and/or specifications are subject to change without notice. All illustrations are artist's concept only. E. & O. E. October 2017.



one-bedroom

## Sky Suites – 1A

interior area:

543 SF / Suite 02

exterior area:

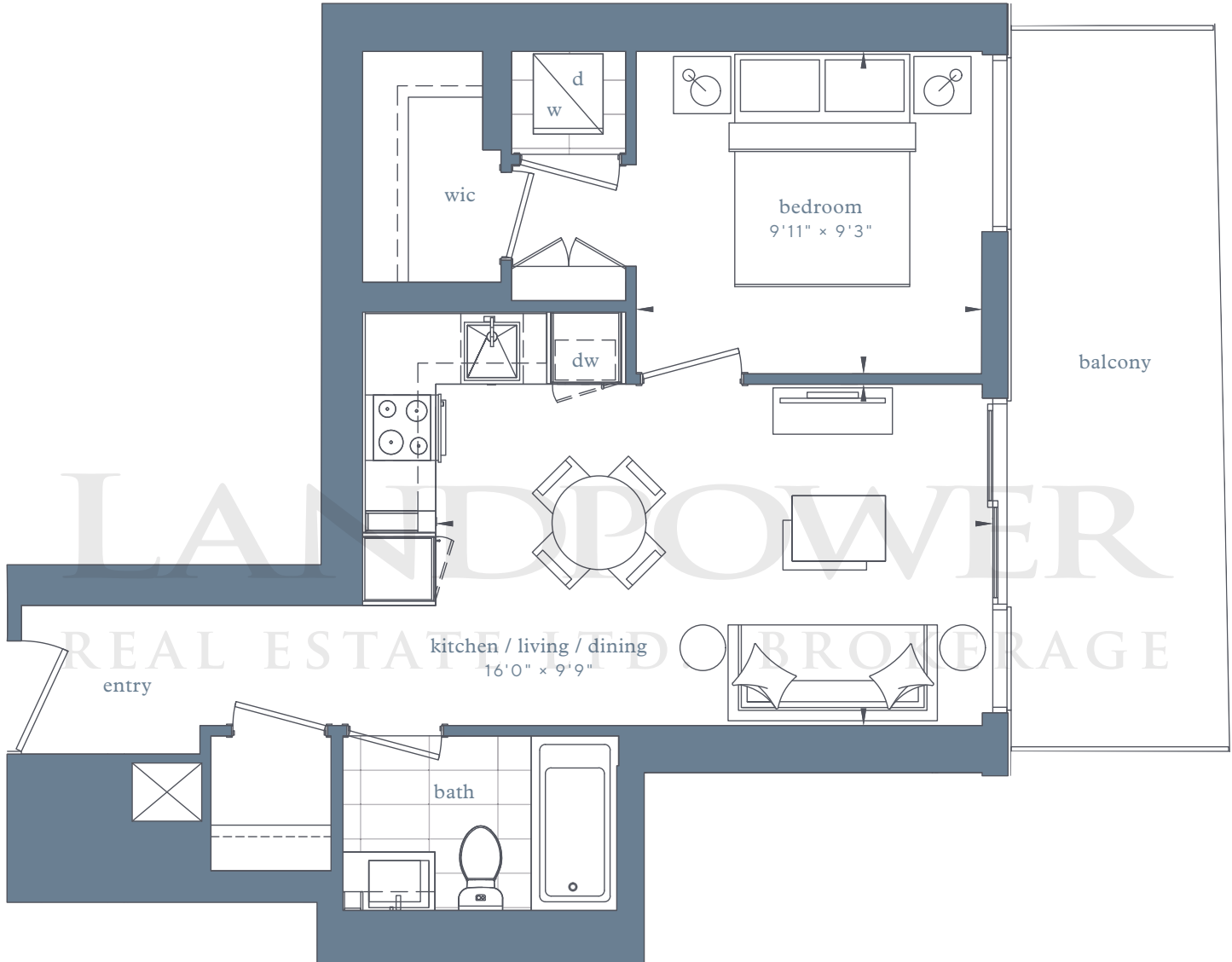
MIN 122 SF

MAX 145 SF

LIVE. PLAY. LAKE.

# LAKE SIDE

RESIDENCES



Sky Suites –  
floors 16-24



Sky Suites –  
floors 25-39



Any stated areas and/or dimensions shown are approximate only and subject to normal construction variances. Actual usable floor space may vary from any stated or depicted floor area and the unit shall be measured in accordance with the provisions set out in Tarion Builder Bulletin 22. The layout of the suite may be reversed depending on the location of the unit within the project. Any furniture depicted is for illustration purposes only and does not necessarily reflect the fixtures, finishes, appliances, and/or electrical plan of the unit and is not included in the purchase price. Ceiling heights are subject to bulkheads, exposed ducts, dropped ceilings and structural beams, as applicable pursuant to the plans. The view from or through the windows to the exterior cladding of the building and may be partially obstructed by materials affixed to the exterior cladding of the building as part of the architectural design elements and/or interior structural columns that may be required pursuant to the recommendations of the project's engineers. Any and all materials, measurements, dimensions and/or specifications are subject to change without notice. All illustrations are artist's concept only. E. & O. E. October 2017.



one-bedroom + den

## Sky Suites – 1DB

interior area:

625 SF/ Suite 06

exterior area:

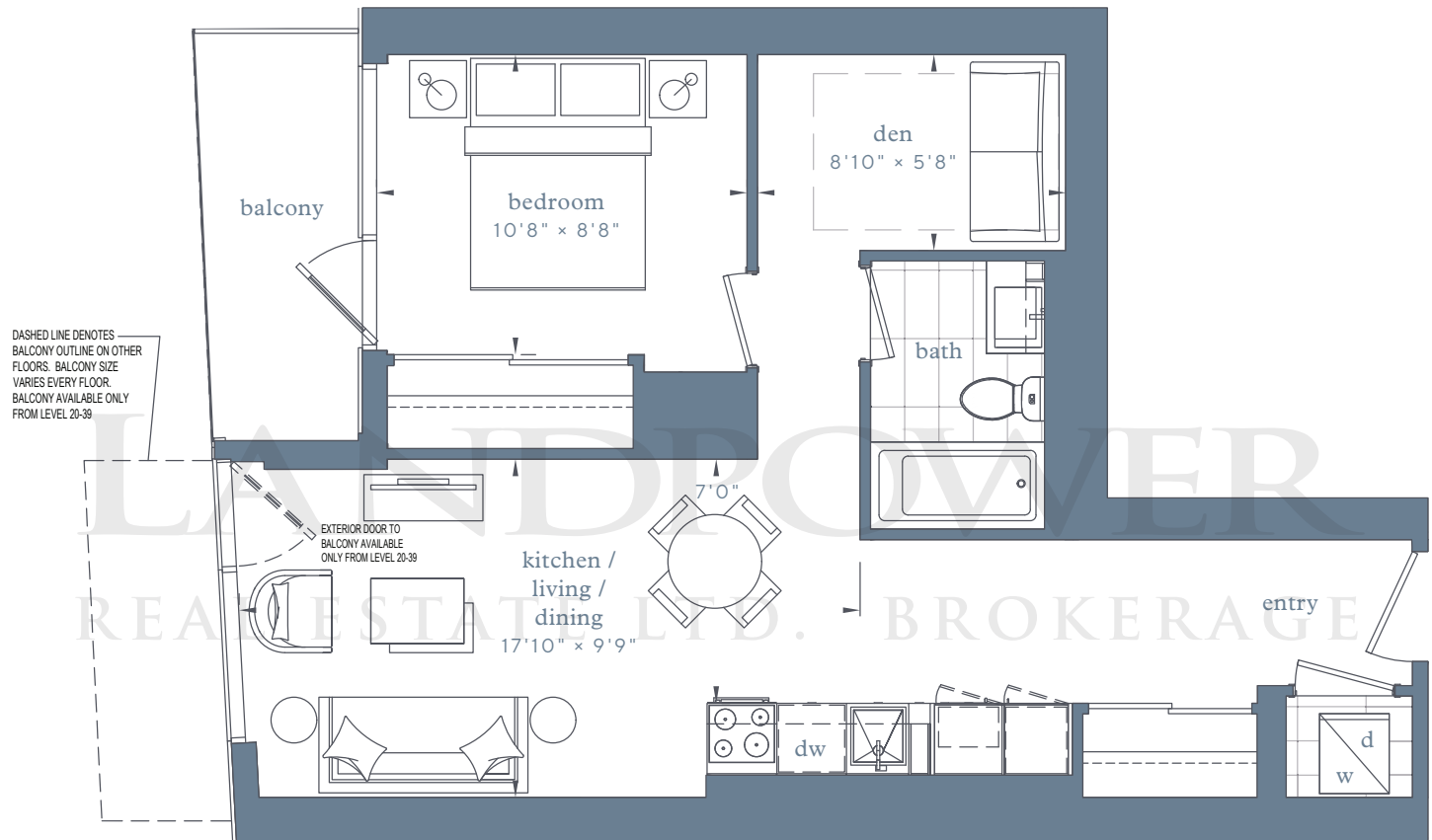
MIN 52 SF

MAX 112 SF

LIVE. PLAY. LAKE.

## LAKE SIDE

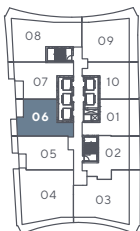
RESIDENCES



Sky Suites –  
floors 16-24



Sky Suites –  
floors 25-39



Any stated areas and/or dimensions shown are approximate only and subject to normal construction variances. Actual usable floor space may vary from any stated or depicted floor area and the unit shall be measured in accordance with the provisions set out in Tarion Builder Bulletin 22. The layout of the suite may be reversed depending on the location of the unit within the project. Any furniture depicted is for illustration purposes only and does not necessarily reflect the fixtures, finishes, appliances, and/or electrical plan of the unit and is not included in the purchase price. Ceiling heights are subject to bulkheads, exposed ducts, dropped ceilings and structural beams, as applicable pursuant to the plans. The view from or through the windows to the exterior cladding of the building and may be partially obstructed by materials affixed to the exterior cladding of the building as part of the architectural design elements and/or interior structural columns that may be required pursuant to the recommendations of the project's engineers. Any and all materials, measurements, dimensions and/or specifications are subject to change without notice. All illustrations are artist's concept only. E. & O. E. October 2017.



one-bedroom + den

## Sky Suites – 1DA

interior area:

634 SF/ Suite 05

exterior area:

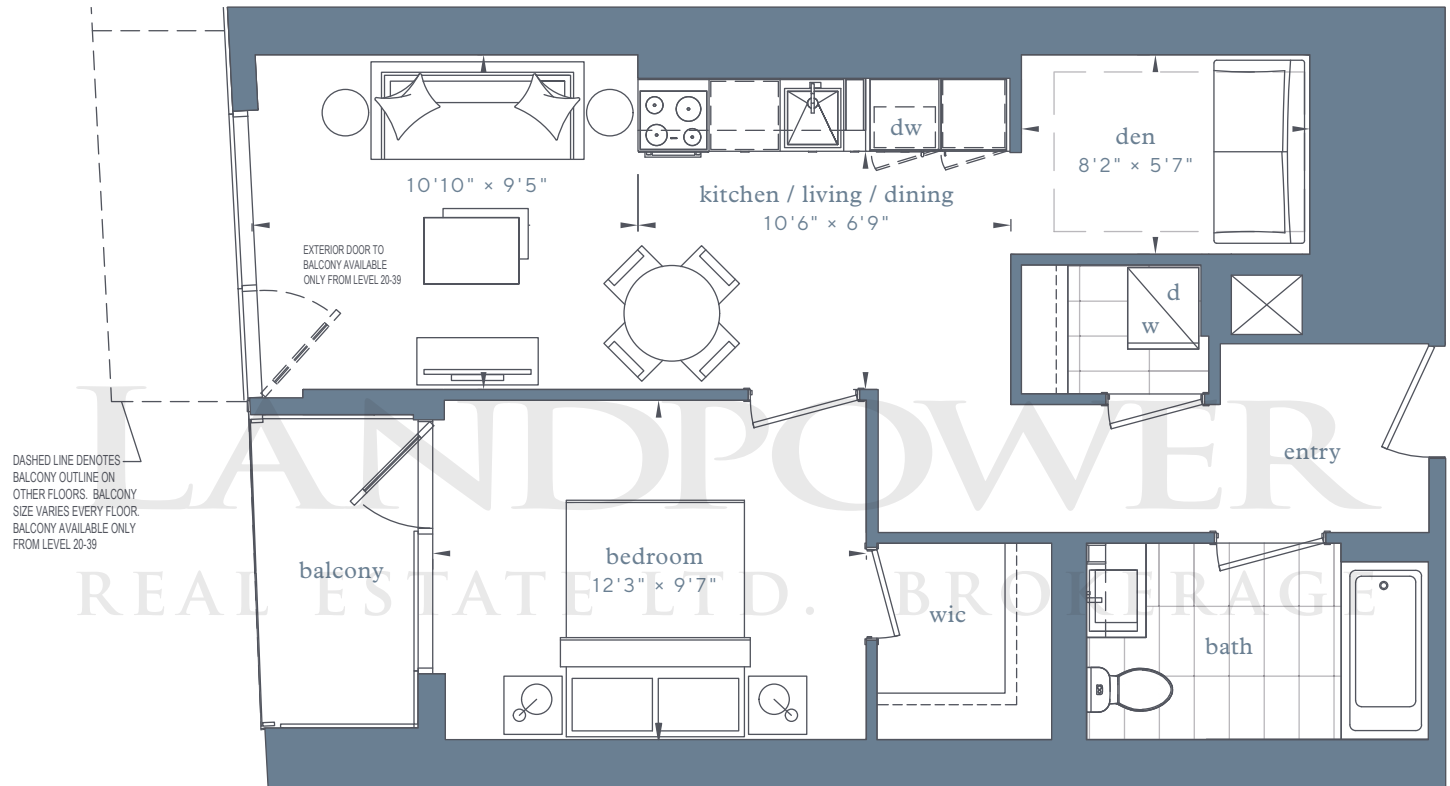
MIN 38 SF

MAX 96 SF

LIVE. PLAY. LAKE.

# LAKE SIDE

RESIDENCES



Sky Suites –  
floors 16-24



Sky Suites –  
floors 25-39



Any stated areas and/or dimensions shown are approximate only and subject to normal construction variances. Actual usable floor space may vary from any stated or depicted floor area and the unit shall be measured in accordance with the provisions set out in Tarion Builder Bulletin 22. The layout of the suite may be reversed depending on the location of the unit within the project. Any furniture depicted is for illustration purposes only and does not necessarily reflect the fixtures, finishes, appliances, and/or electrical plan of the unit and is not included in the purchase price. Ceiling heights are subject to bulkheads, exposed ducts, dropped ceilings and structural beams, as applicable pursuant to the plans. The view from or through the windows to the exterior cladding of the building and may be partially obstructed by materials affixed to the exterior cladding of the building as part of the architectural design elements and/or interior structural columns that may be required pursuant to the recommendations of the project's engineers. Any and all materials, measurements, dimensions and/or specifications are subject to change without notice. All illustrations are artist's concept only. E. & O. E. October 2017.



one-bedroom + den

## Sky Suites – 1DC

interior area:

655 SF/ Suite 07

exterior area:

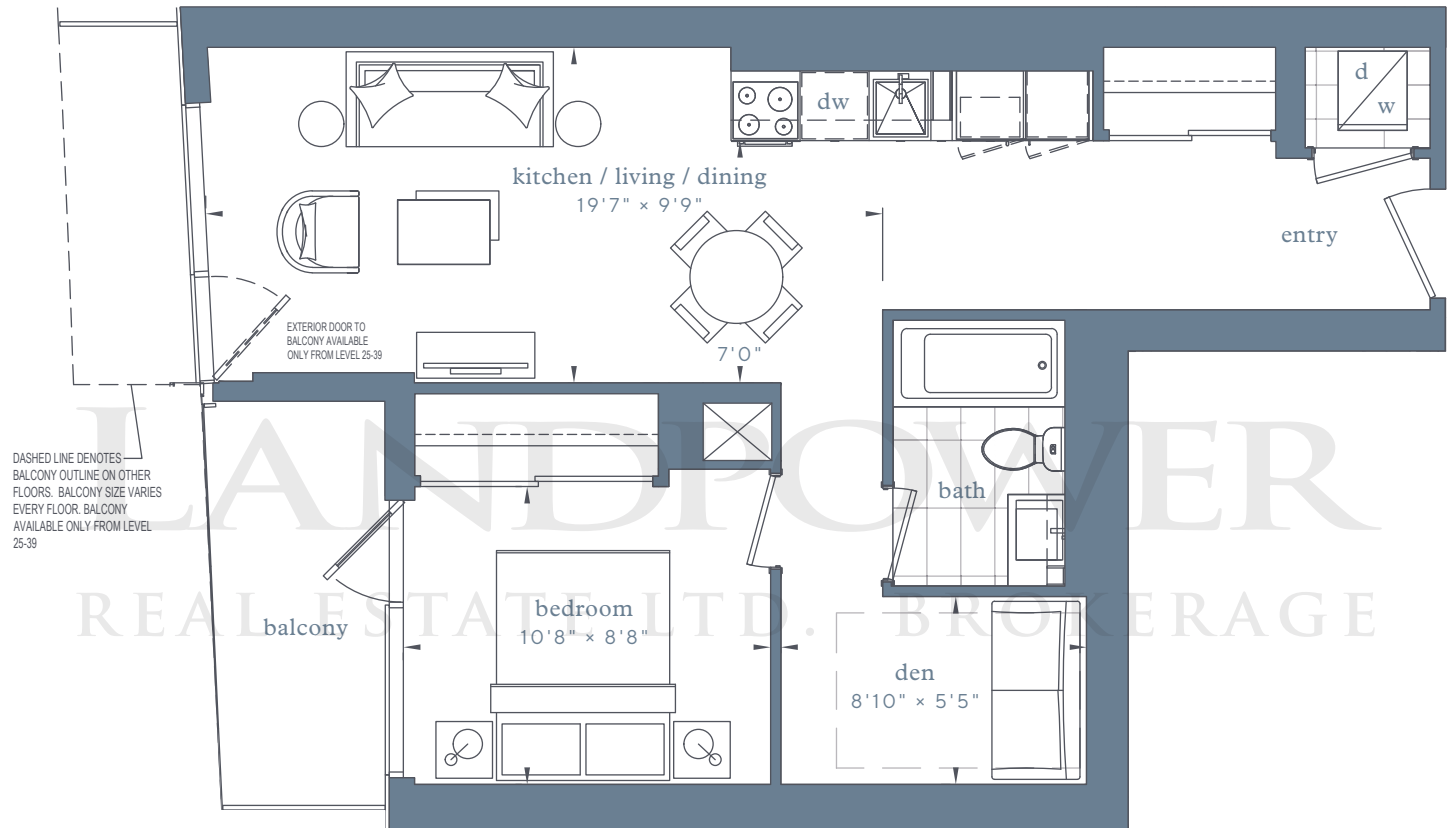
MIN 59 SF

MAX 120 SF

LIVE. PLAY. LAKE.

## LAKE SIDE

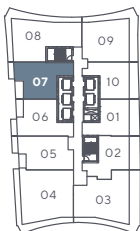
RESIDENCES



Sky Suites –  
floors 16-24



Sky Suites –  
floors 25-39



Any stated areas and/or dimensions shown are approximate only and subject to normal construction variances. Actual usable floor space may vary from any stated or depicted floor area and the unit shall be measured in accordance with the provisions set out in Tarion Builder Bulletin 22. The layout of the suite may be reversed depending on the location of the unit within the project. Any furniture depicted is for illustration purposes only and does not necessarily reflect the fixtures, finishes, appliances, and/or electrical plan of the unit and is not included in the purchase price. Ceiling heights are subject to bulkheads, exposed ducts, dropped ceilings and structural beams, as applicable pursuant to the plans. The view from or through the windows to the exterior cladding of the building and may be partially obstructed by materials affixed to the exterior cladding of the building as part of the architectural design elements and/or interior structural columns that may be required pursuant to the recommendations of the project's engineers. Any and all materials, measurements, dimensions and/or specifications are subject to change without notice. All illustrations are artist's concept only. E. & O. E. October 2017.



three-bedroom

## Sky Suites – 3C

interior area:

891 SF/ Suite 08

exterior area:

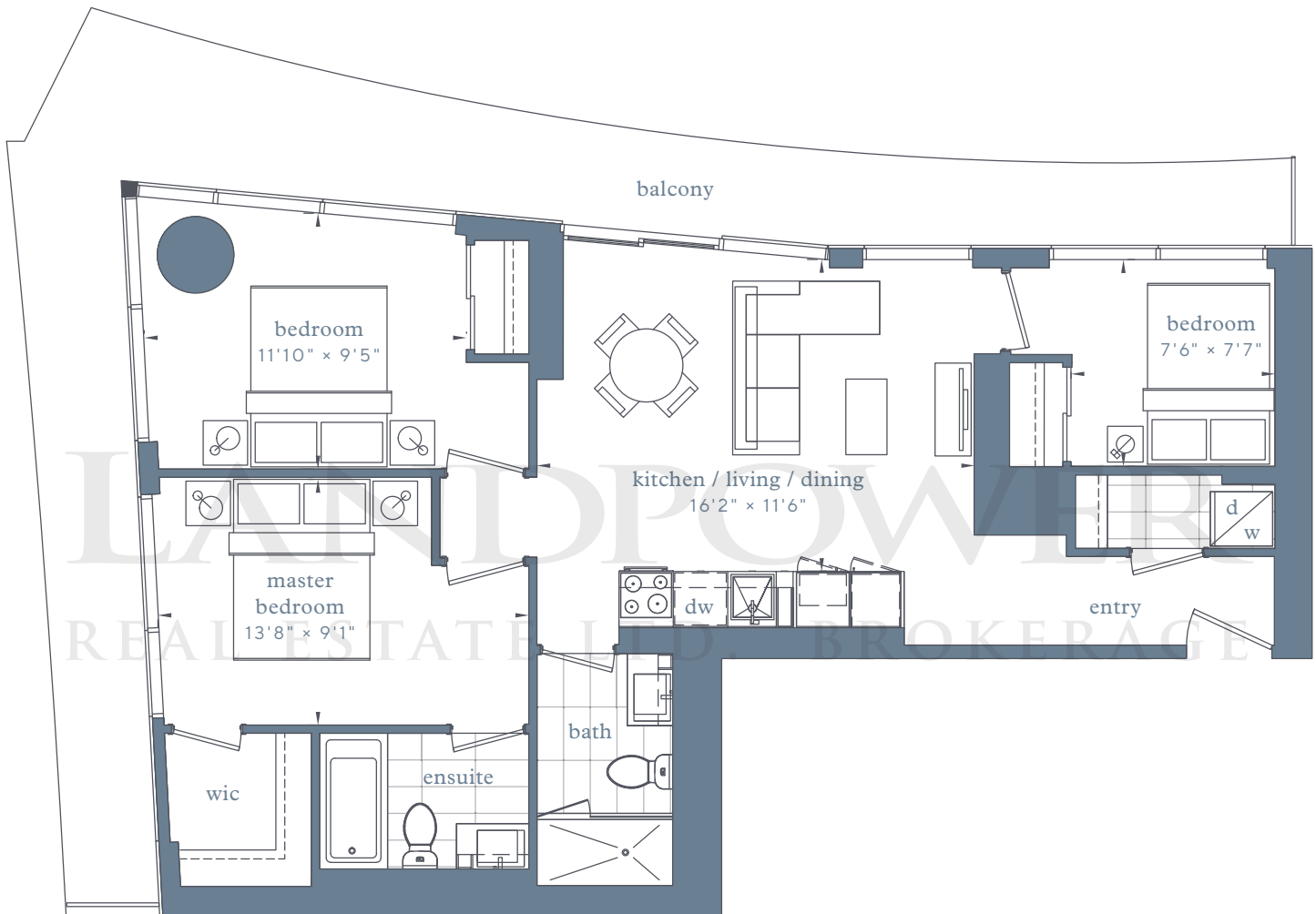
MIN 197 SF

MAX 352 SF

LIVE. PLAY. LAKE.

# LAKE SIDE

RESIDENCES



Sky Suites –  
floors 16-24



Sky Suites –  
floors 25-39



Any stated areas and/or dimensions shown are approximate only and subject to normal construction variances. Actual usable floor space may vary from any stated or depicted floor area and the unit shall be measured in accordance with the provisions set out in Tarion Builder Bulletin 22. The layout of the suite may be reversed depending on the location of the unit within the project. Any furniture depicted is for illustration purposes only and does not necessarily reflect the fixtures, finishes, appliances, and/or electrical plan of the unit and is not included in the purchase price. Ceiling heights are subject to bulkheads, exposed ducts, dropped ceilings and structural beams, as applicable pursuant to the plans. The view from or through the windows to the exterior cladding of the building and may be partially obstructed by materials affixed to the exterior cladding of the building as part of the architectural design elements and/or interior structural columns that may be required pursuant to the recommendations of the project's engineers. Any and all materials, measurements, dimensions and/or specifications are subject to change without notice. All illustrations are artist's concept only. E. & O. E. October 2017.



two-bedroom

## Sky Suites – 2C

interior area:

894 SF / Suite 03

exterior area:

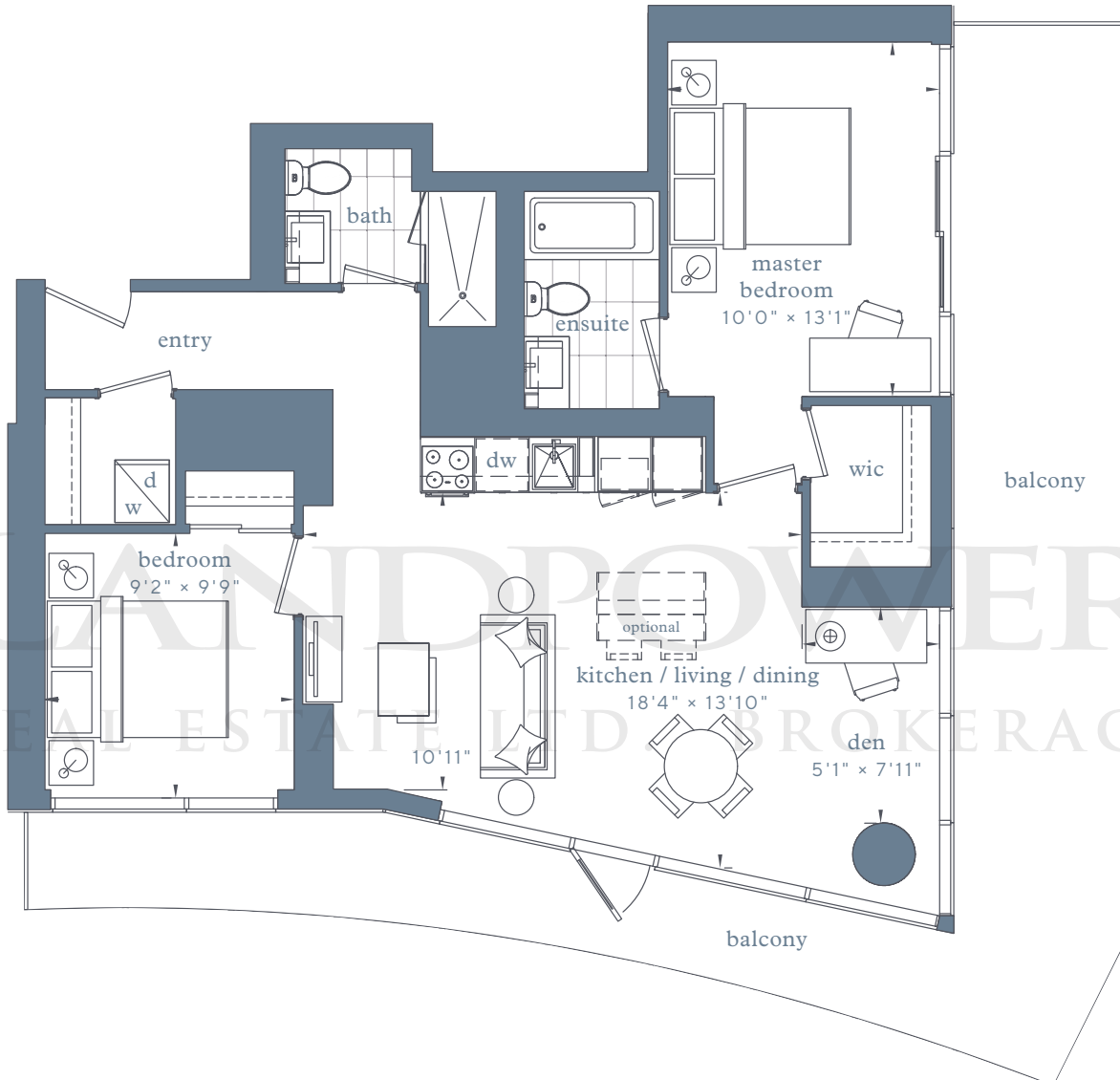
MIN 341 SF

MAX 409 SF

LIVE. PLAY. LAKE.

# LAKE SIDE

RESIDENCES



Sky Suites –  
floors 16-24



Sky Suites –  
floors 25-39



Any stated areas and/or dimensions shown are approximate only and subject to normal construction variances. Actual usable floor space may vary from any stated or depicted floor area and the unit shall be measured in accordance with the provisions set out in Tarion Builder Bulletin 22. The layout of the suite may be reversed depending on the location of the unit within the project. Any furniture depicted is for illustration purposes only and does not necessarily reflect the fixtures, finishes, appliances, and/or electrical plan of the unit and is not included in the purchase price. Ceiling heights are subject to bulkheads, exposed ducts, dropped ceilings and structural beams, as applicable pursuant to the plans. The view from or through the windows to the exterior cladding of the building and may be partially obstructed by materials affixed to the exterior cladding of the building as part of the architectural design elements and/or interior structural columns that may be required pursuant to the recommendations of the project's engineers. Any and all materials, measurements, dimensions and/or specifications are subject to change without notice. All illustrations are artist's concept only. E. & O. E. October 2017.



LIVE. PLAY. LAKE.



three-bedroom

## Sky Suites – 3A

interior area:

1012 SF/ Suite 04

exterior area:

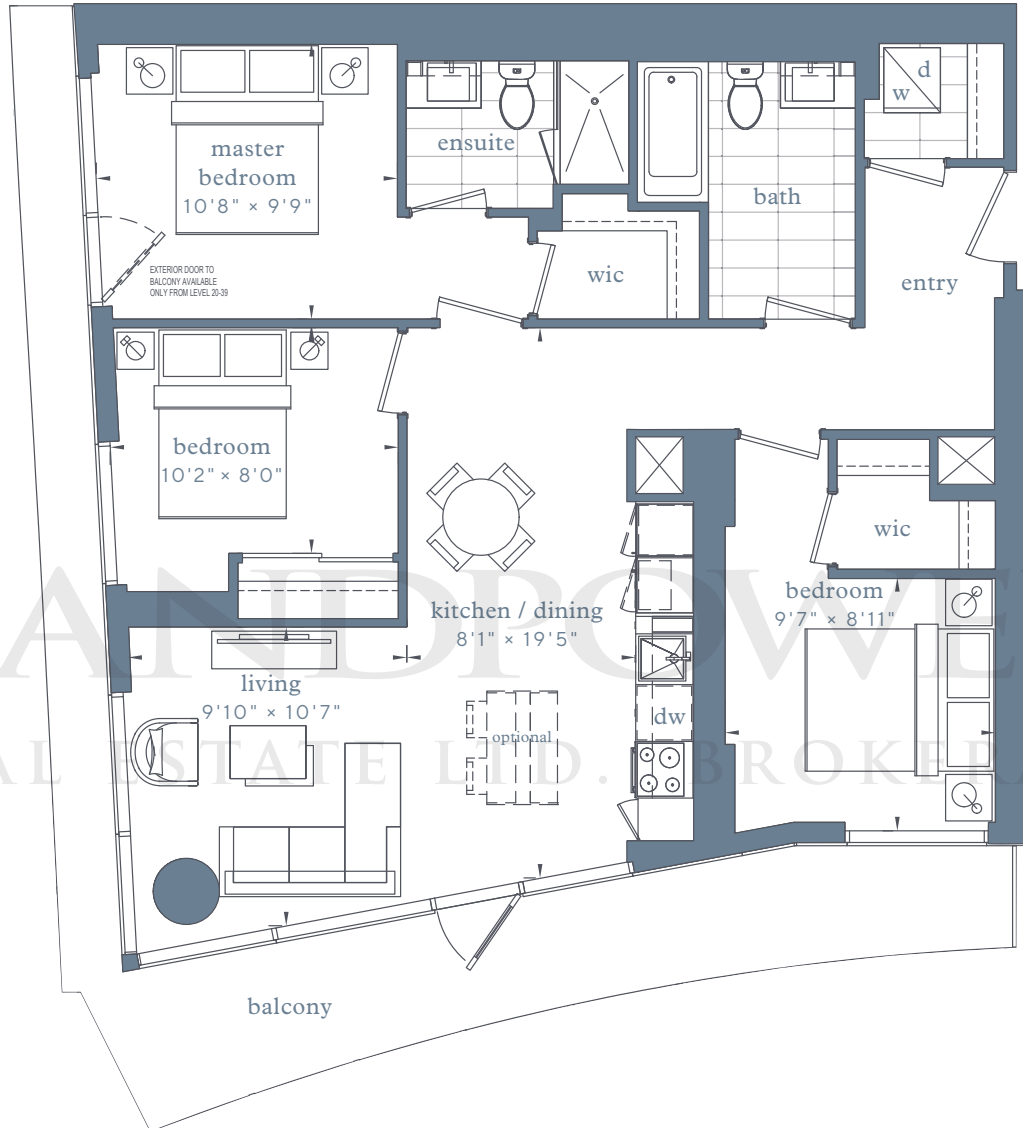
MIN 244 SF

MAX 309 SF

LIVE. PLAY. LAKE.

# LAKE SIDE

RESIDENCES



Sky Suites –  
floors 16-24



Sky Suites –  
floors 25-39



Any stated areas and/or dimensions shown are approximate only and subject to normal construction variances. Actual usable floor space may vary from any stated or depicted floor area and the unit shall be measured in accordance with the provisions set out in Tarion Builder Bulletin 22. The layout of the suite may be reversed depending on the location of the unit within the project. Any furniture depicted is for illustration purposes only and does not necessarily reflect the fixtures, finishes, appliances, and/or electrical plan of the unit and is not included in the purchase price. Ceiling heights are subject to bulkheads, exposed ducts, dropped ceilings and structural beams, as applicable pursuant to the plans. The view from or through the windows to the exterior cladding of the building and may be partially obstructed by materials affixed to the exterior cladding of the building as part of the architectural design elements and/or interior structural columns that may be required pursuant to the recommendations of the project's engineers. Any and all materials, measurements, dimensions and/or specifications are subject to change without notice. All illustrations are artist's concept only. E. & O. E. October 2017.

