

# FEATURES & FINISHES

## REFINED CONTEMPORARY LIVING AREAS

- Spacious ceiling heights of approximately 9'0" on floors 2-20. (Where bulkheads are required for mechanical or other purposes — such as kitchen and bathroom exhausts, heating and cooling duct work — ceiling heights may be reduced.)
- Smooth finished ceilings
- Purchaser's choice from a selection of designer pre-finished engineered flooring throughout (except in bathroom and laundry)
- Secure and stylish solid core entry door
- Architectural finishes including modern flat profile baseboards and contemporary trim
- 5" baseboards and 3" casing to be painted white
- Stacked washer and dryer, size indicated as per plan
- Balcony or Terrace, as per plan
- In suite fan coil cooling and heating system
- Prewired for technology and communication

## SPA INSPIRED BATHROOMS

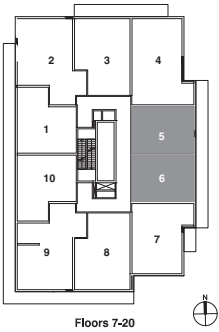
- Custom designed cabinetry available in a variety of finishes and colours, from the Vendor's standard samples.
- Ultra-modern solid surface countertop with sink and single lever faucet
- Mirror with sconce lighting
- Choice of porcelain tile flooring
- High efficiency low flow toilet
- Designer selected high-end plumbing fixtures
- Lavish soaker tub, as per plan
- Frameless glass shower, as per plan
- Soothing rain shower head
- Bathroom accessory package

## EXQUISITE CHEF'S KITCHEN

- Custom designed kitchen cabinetry in choice of finishes and colours, from Vendor's standard samples.
- Designer quartz countertop with tile backsplash, from Vendor's standard samples
- Contemporary Track Lights, as per plan
- Single undermount stainless steel sink with contemporary design faucet with integrated pull-out spray
- Kitchens in suites from floors 2-20 to contain integrated 24" refrigerator, built-in oven with cook top, microwave & hood fan combination (OTR), and integrated dishwasher

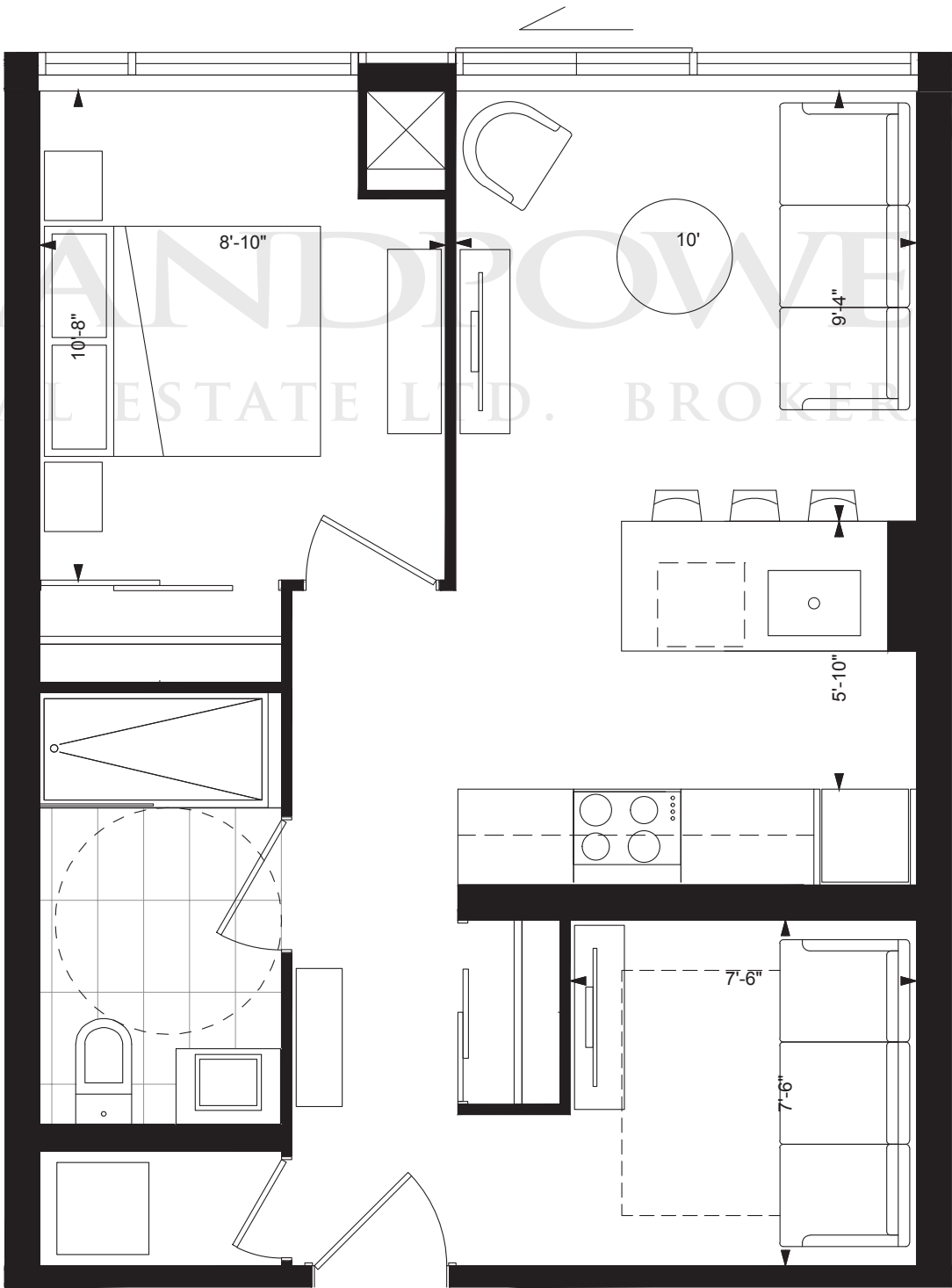
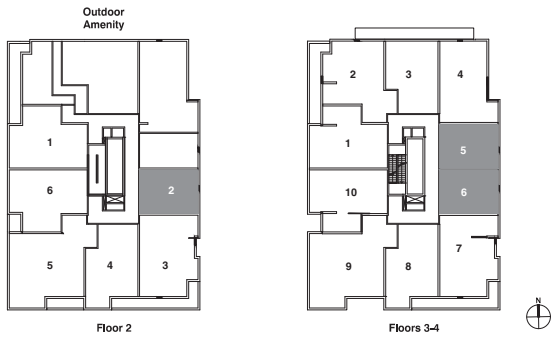
ANNEX

one bedroom + den / 531 sq. ft.  
balcony / 98 sq. ft.



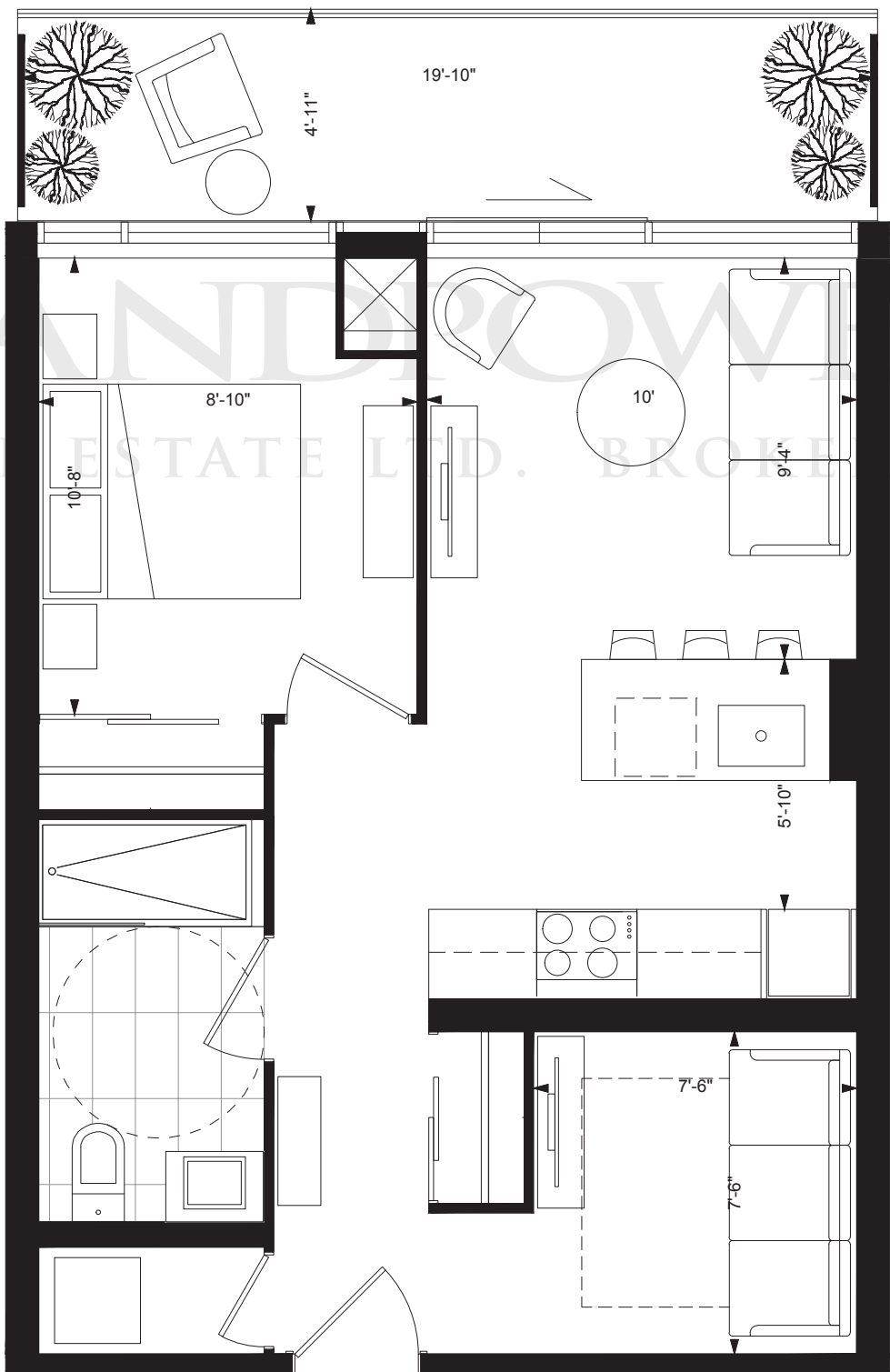
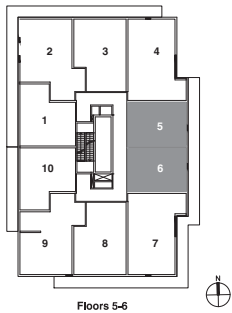
YORK

one bedroom + den / 531 sq. ft.



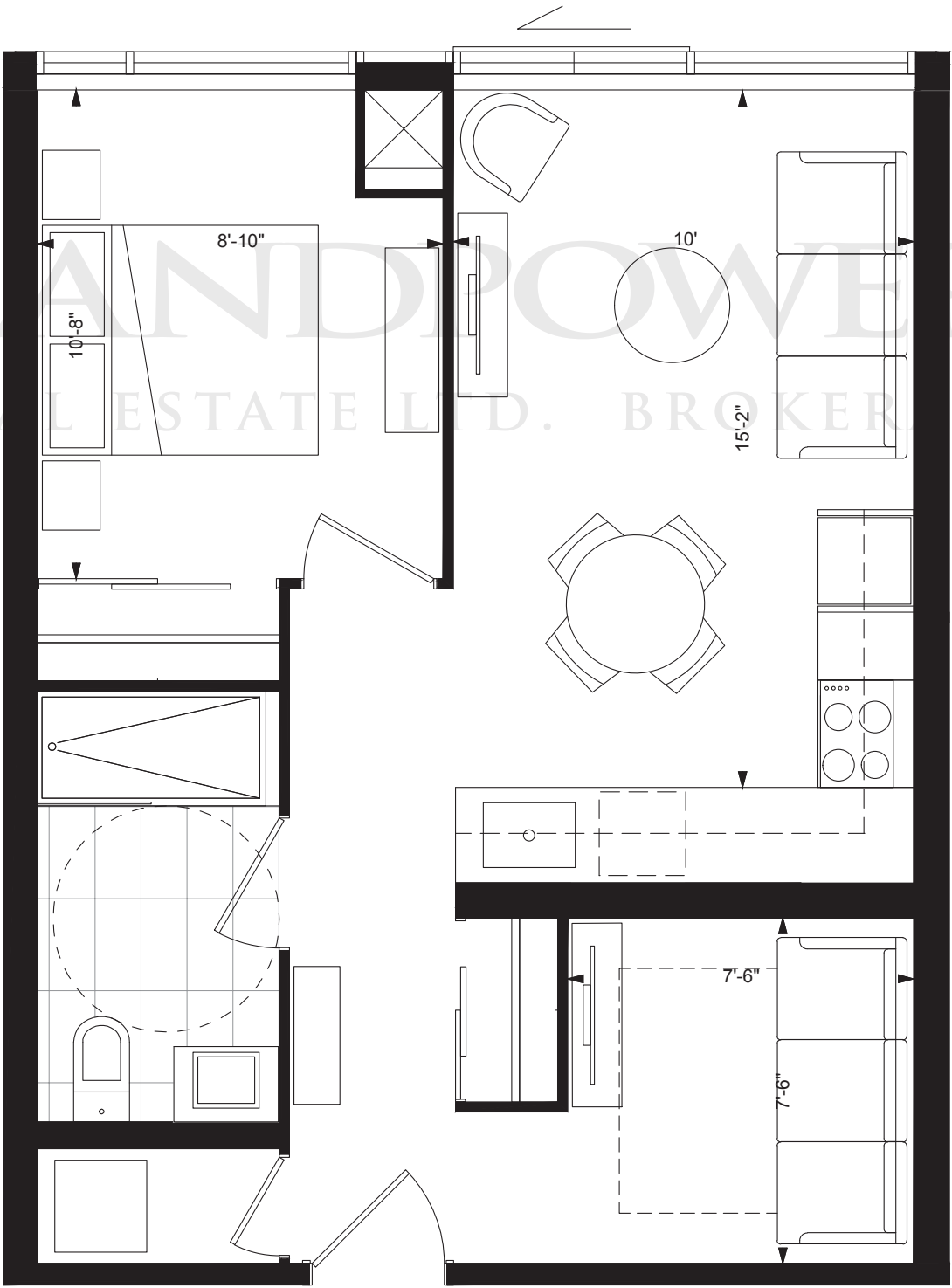
YORK

one bedroom + den / 531 sq. ft.  
balcony / 98 sq. ft.



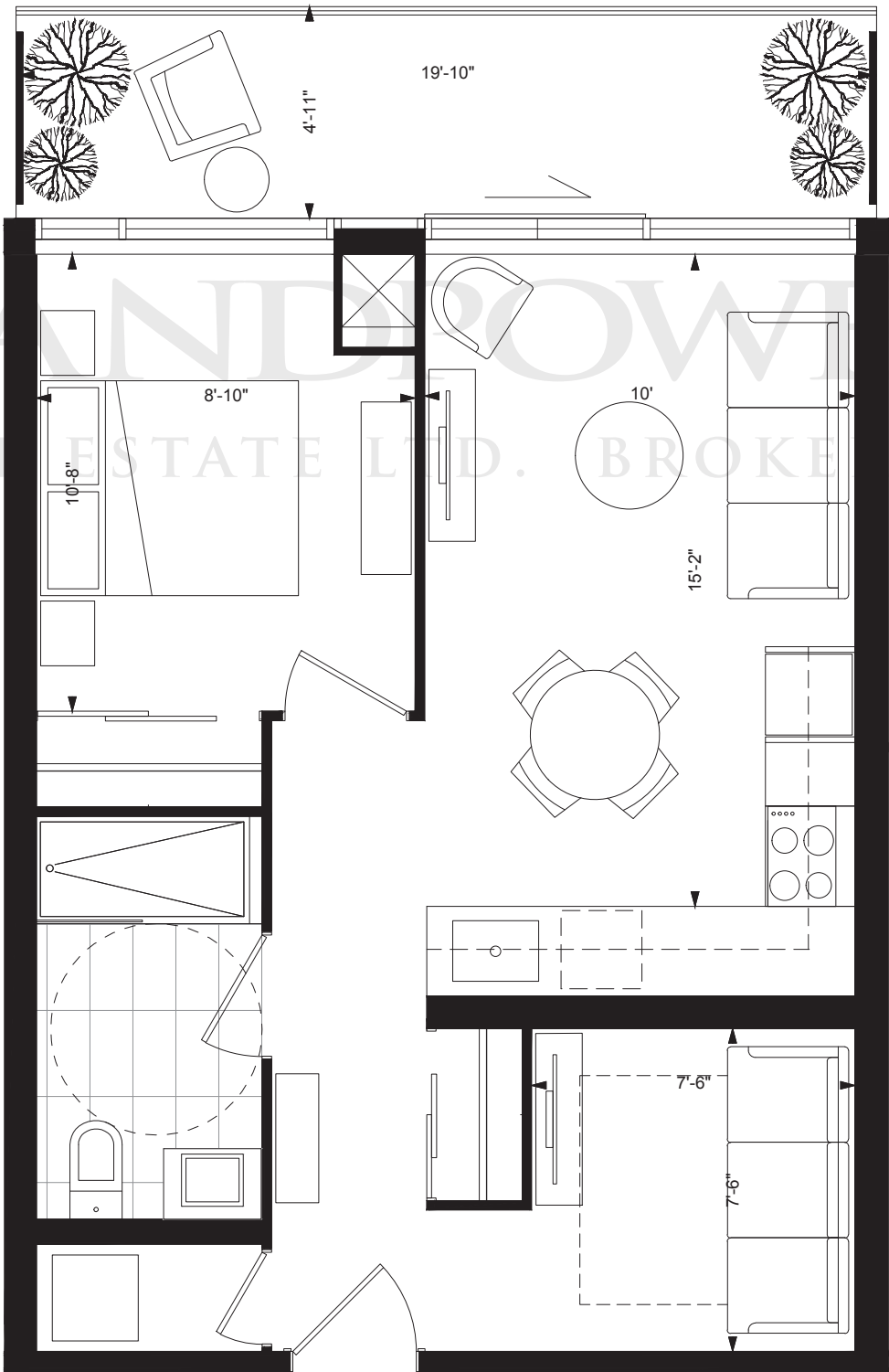
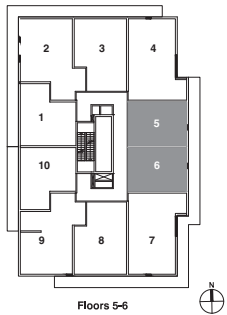


YORK<sub>ALT</sub>  
*one bedroom + den / 531 sq. ft.*



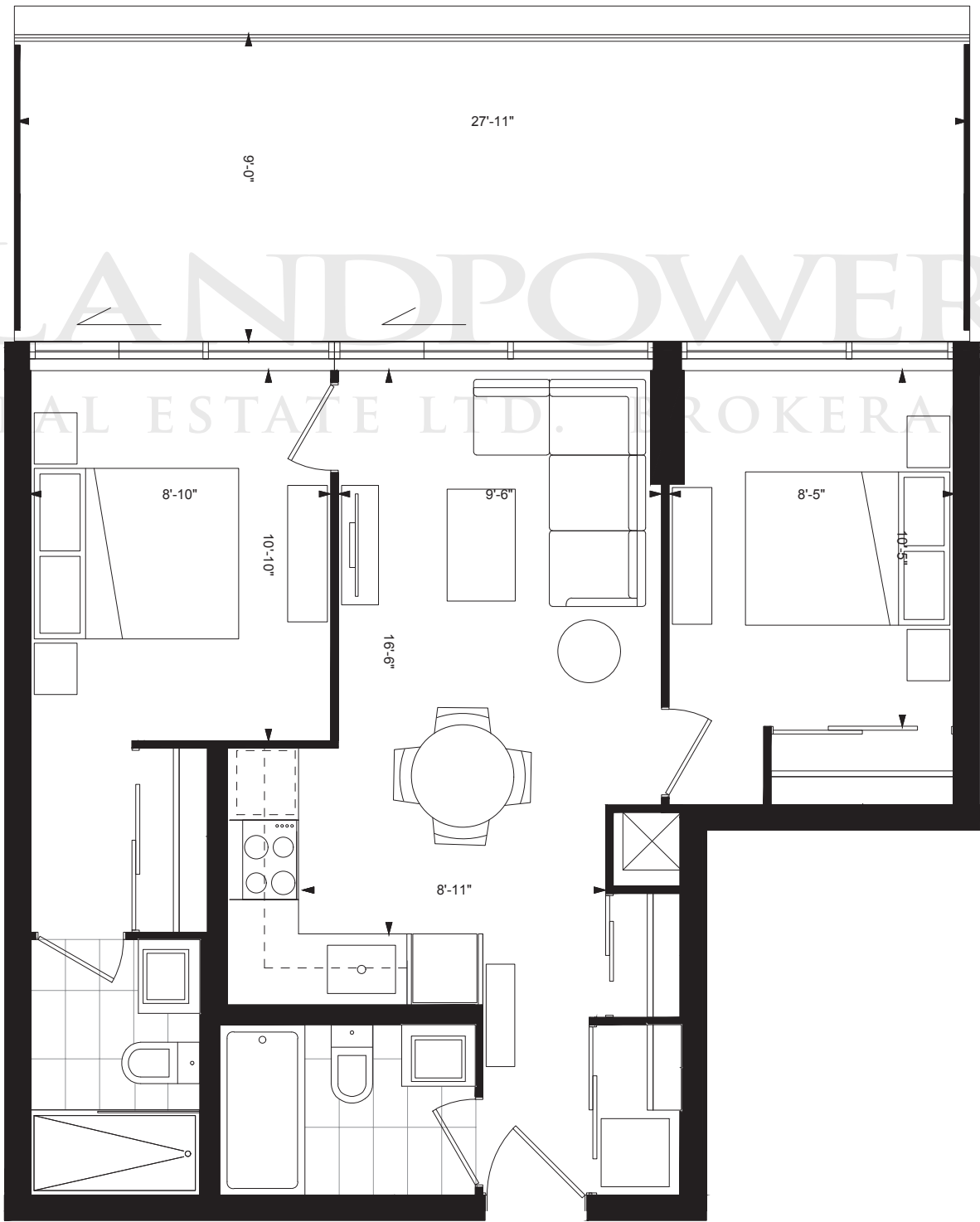
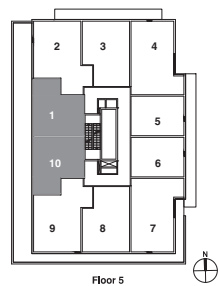
YORK<sub>ALT</sub>

one bedroom + den / 531 sq. ft.  
balcony / 98 sq. ft.



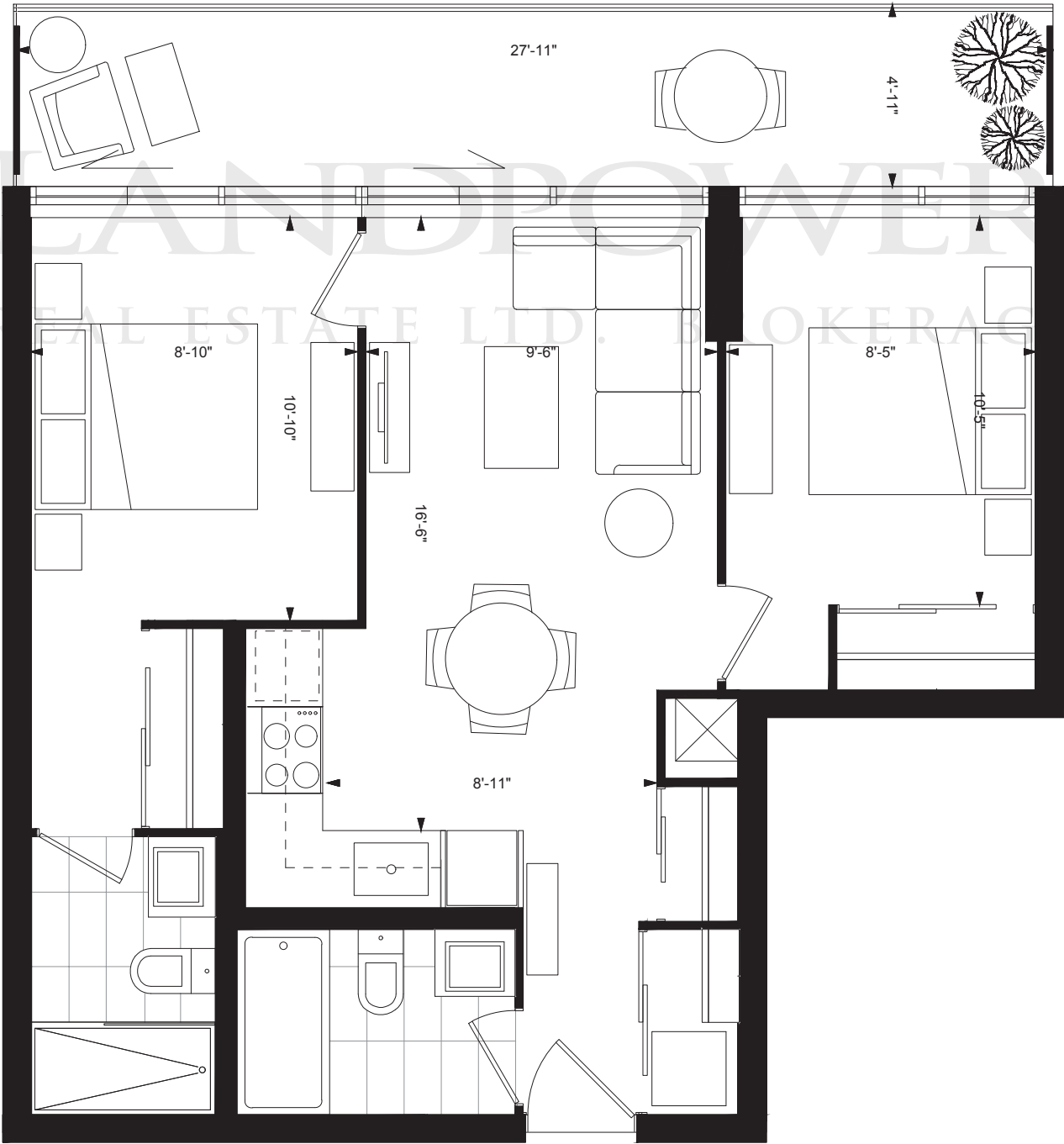
DAVENPORT

two bedroom / 616 sq. ft.  
terrace / 251 sq. ft.



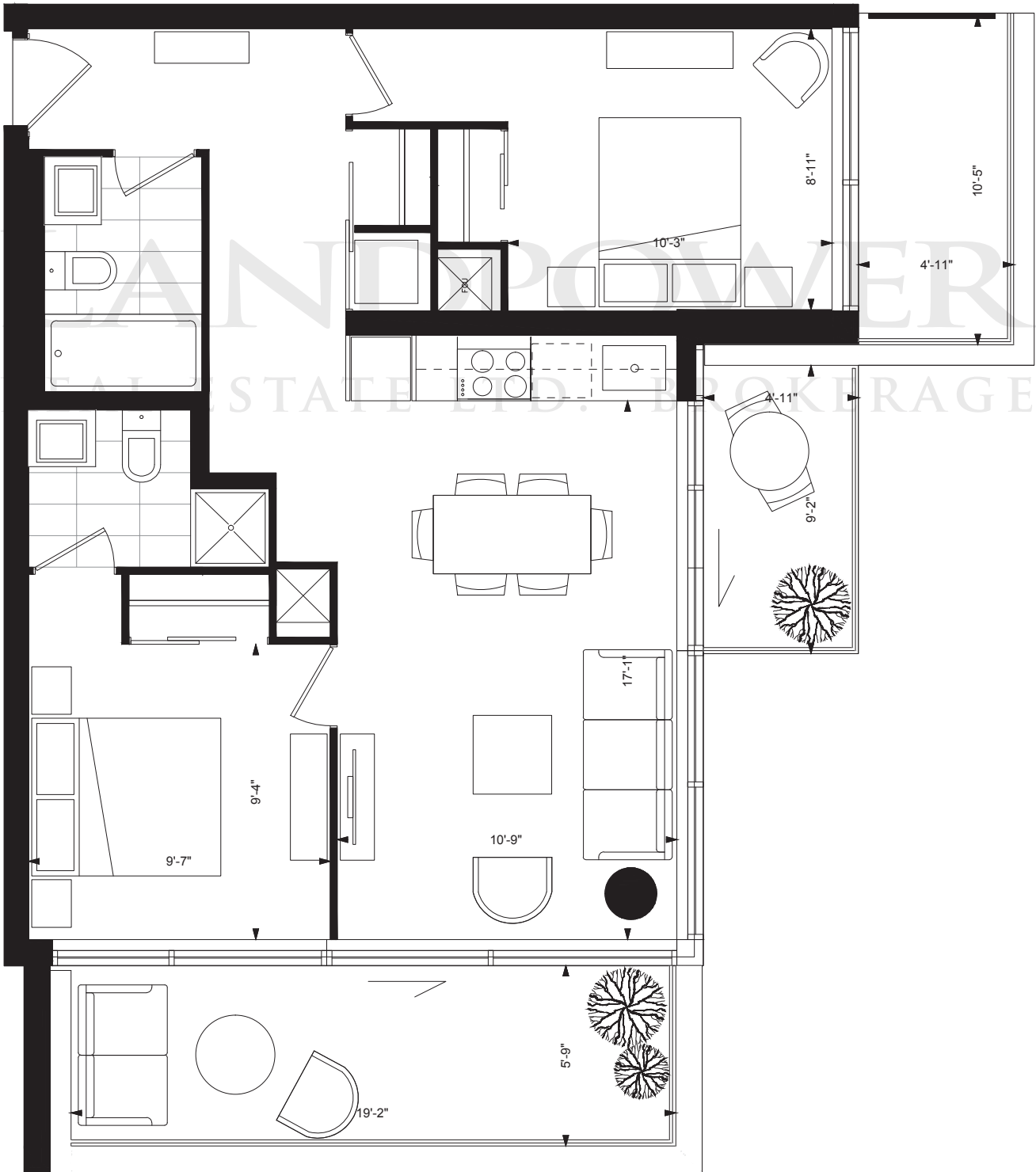
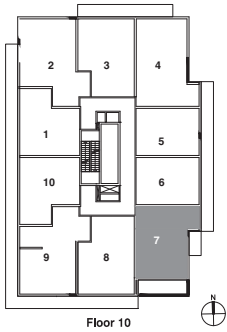
# DAVENPORT

*two bedroom / 616 sq. ft.*  
*balcony / 137 sq. ft.*



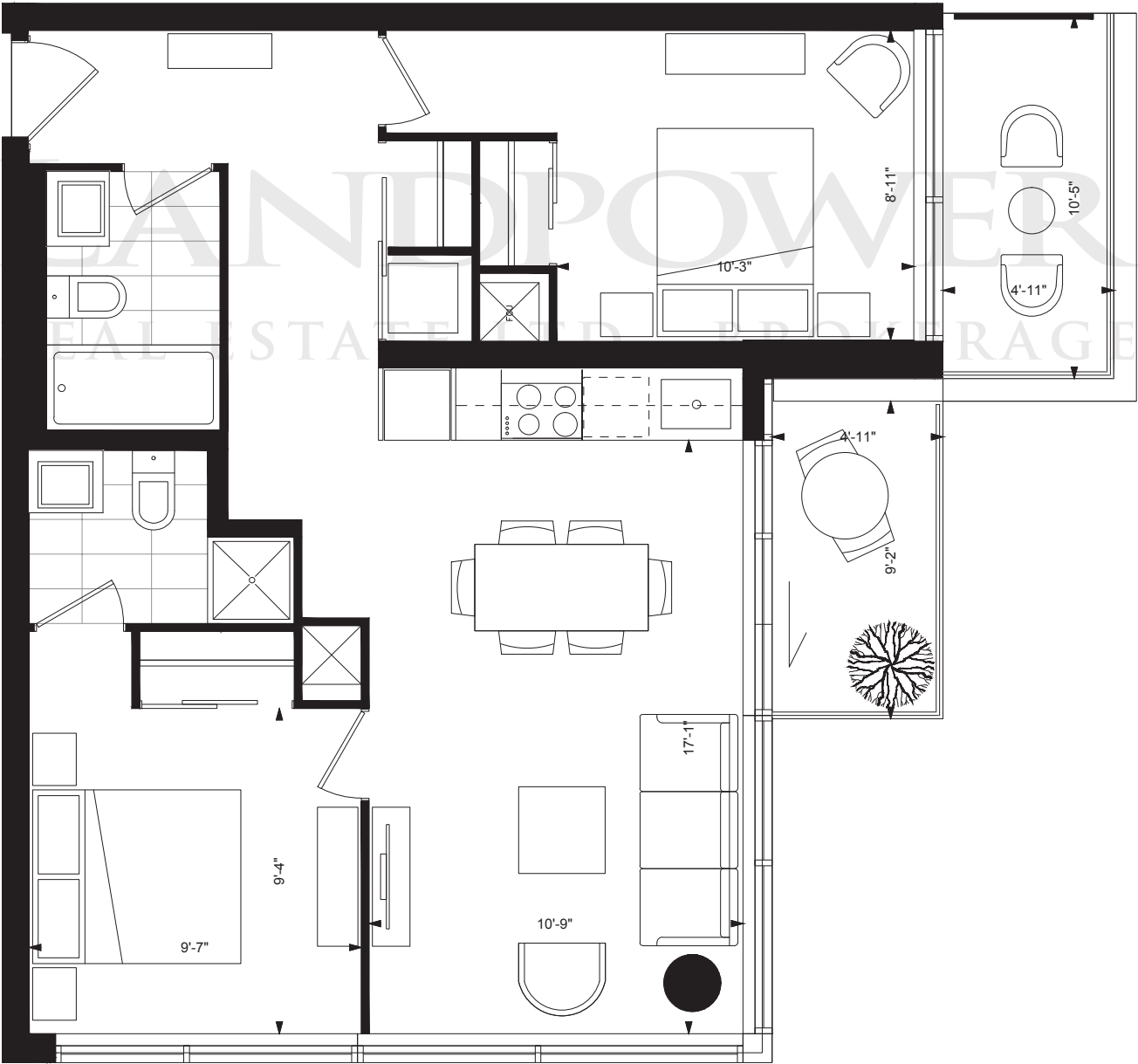
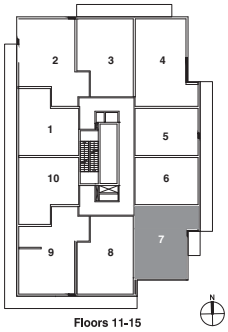
# RIVERBOAT

*two bedroom / 710 sq. ft.*  
*terrace / 110 sq. ft. | balcony 45 sq. ft.*



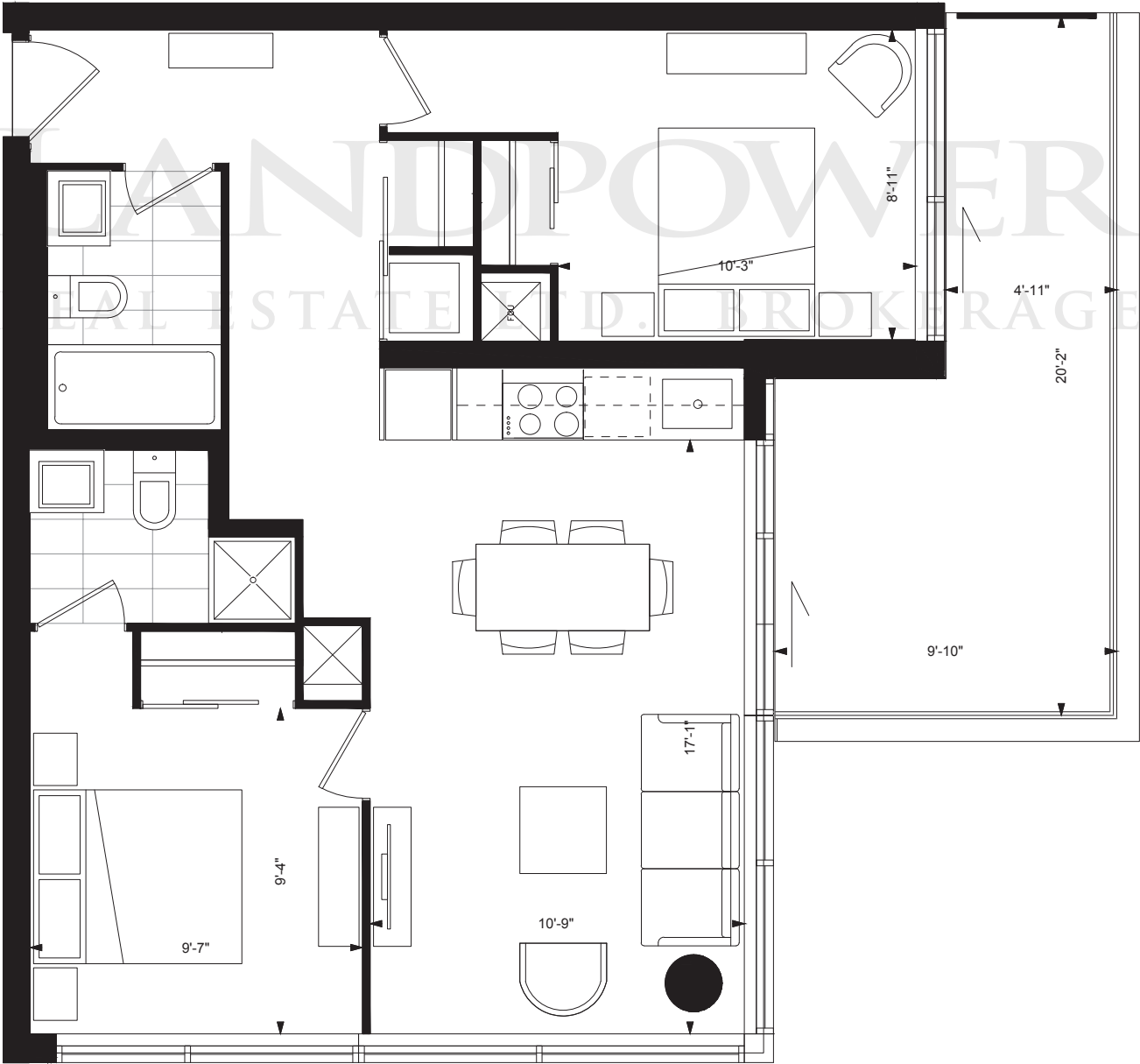
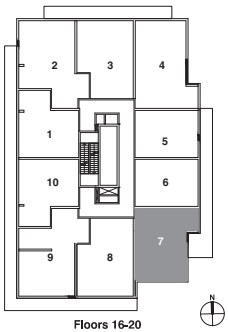
# RIVERBOAT

*two bedroom / 710 sq. ft.*  
*balcony / 96 sq. ft.*



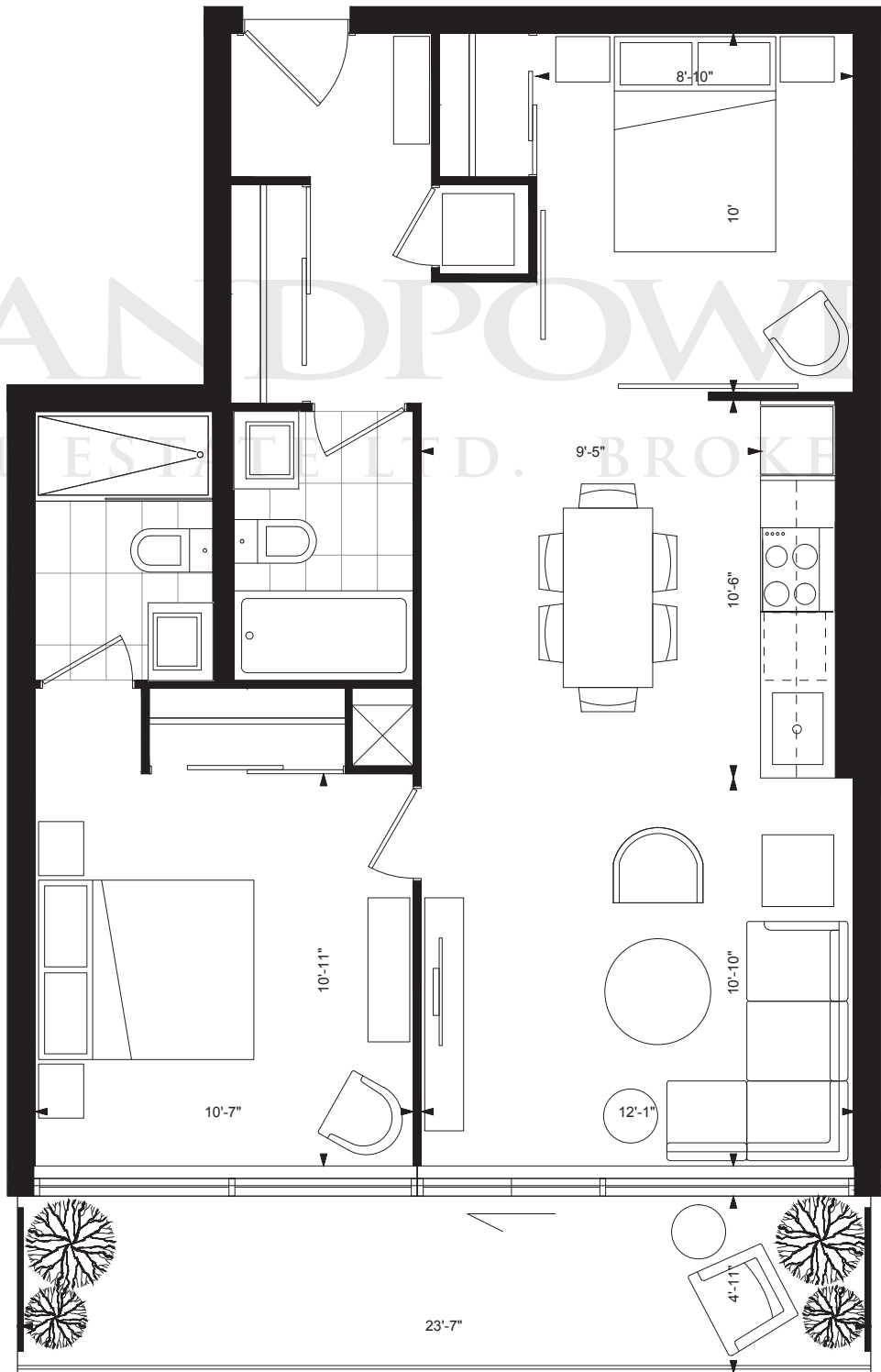
# RIVERBOAT

*two bedroom / 710 sq. ft.*  
*balcony / 148 sq. ft.*



VARSDITY

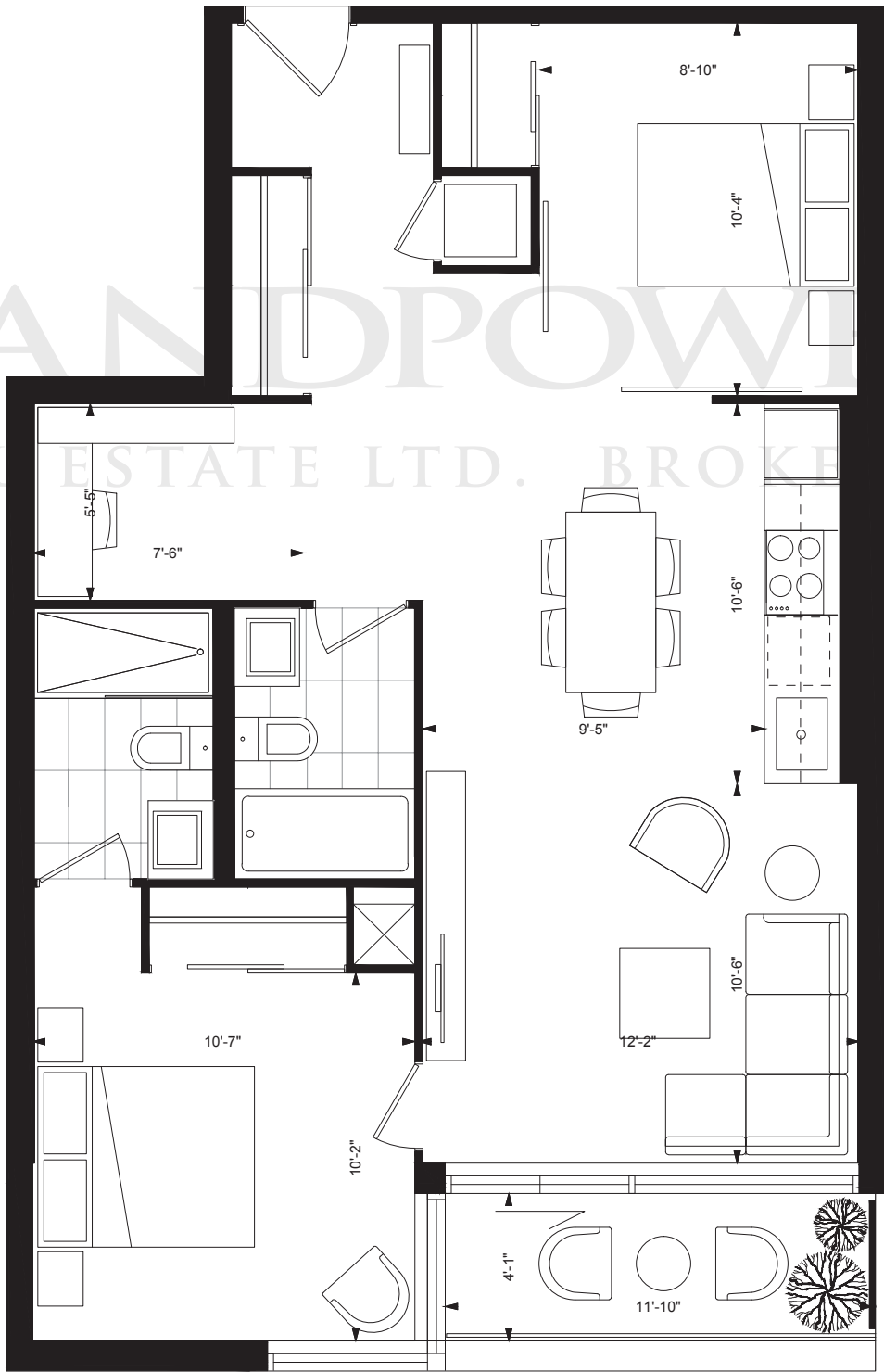
two bedroom / 712 sq. ft.  
balcony / 116 sq. ft.





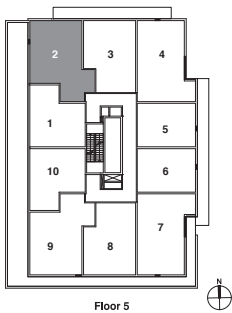
# ROBARTS

*two bedroom + den / 770 sq. ft.*  
*balcony / 48 sq. ft.*



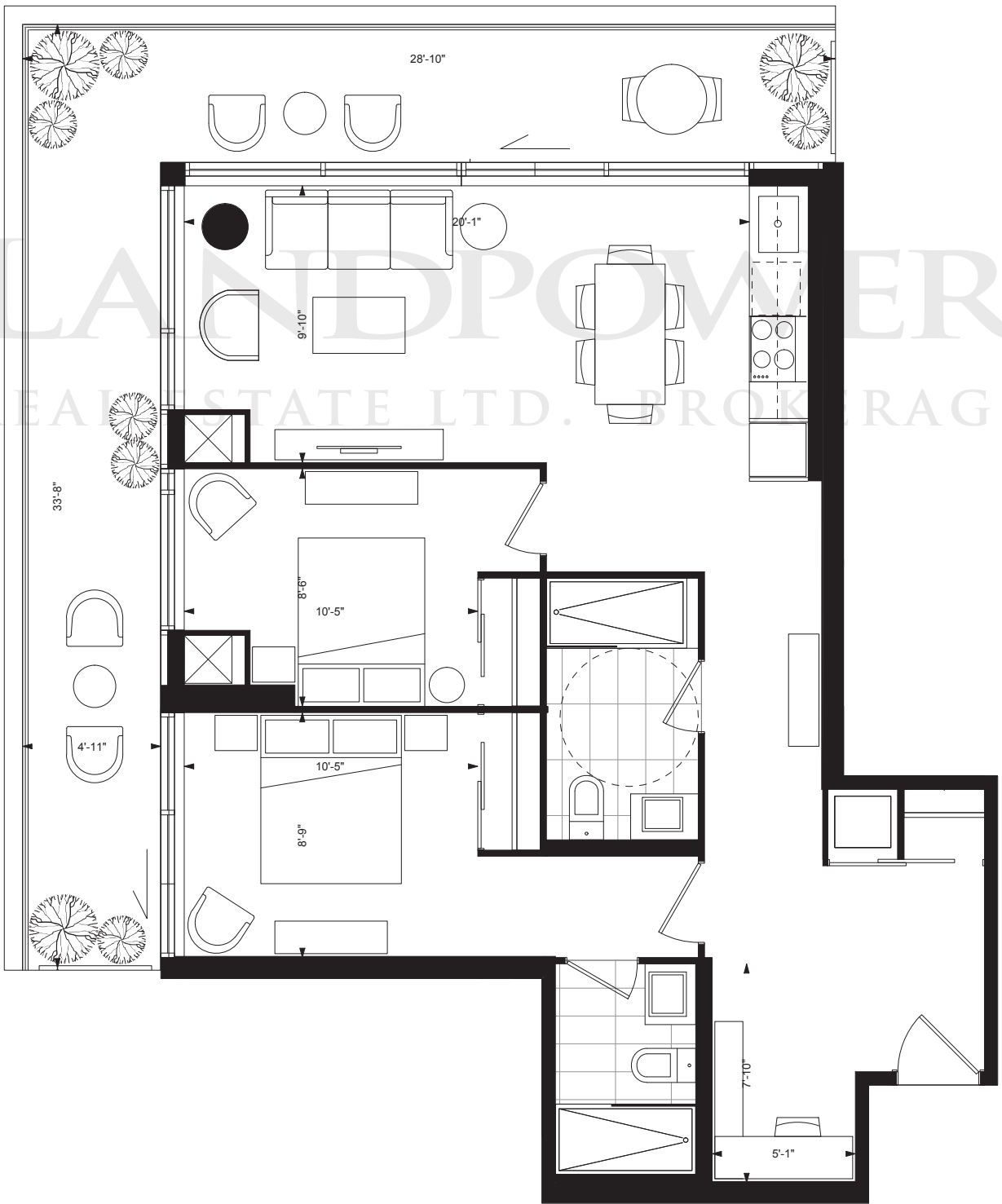
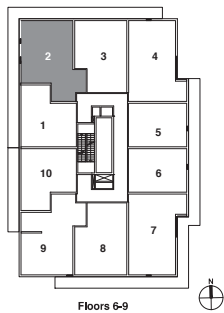
CUMBERLAND NORTH

two bedroom + den / 834 sq. ft.  
terrace / 243 sq. ft. | balcony 63 sq. ft.



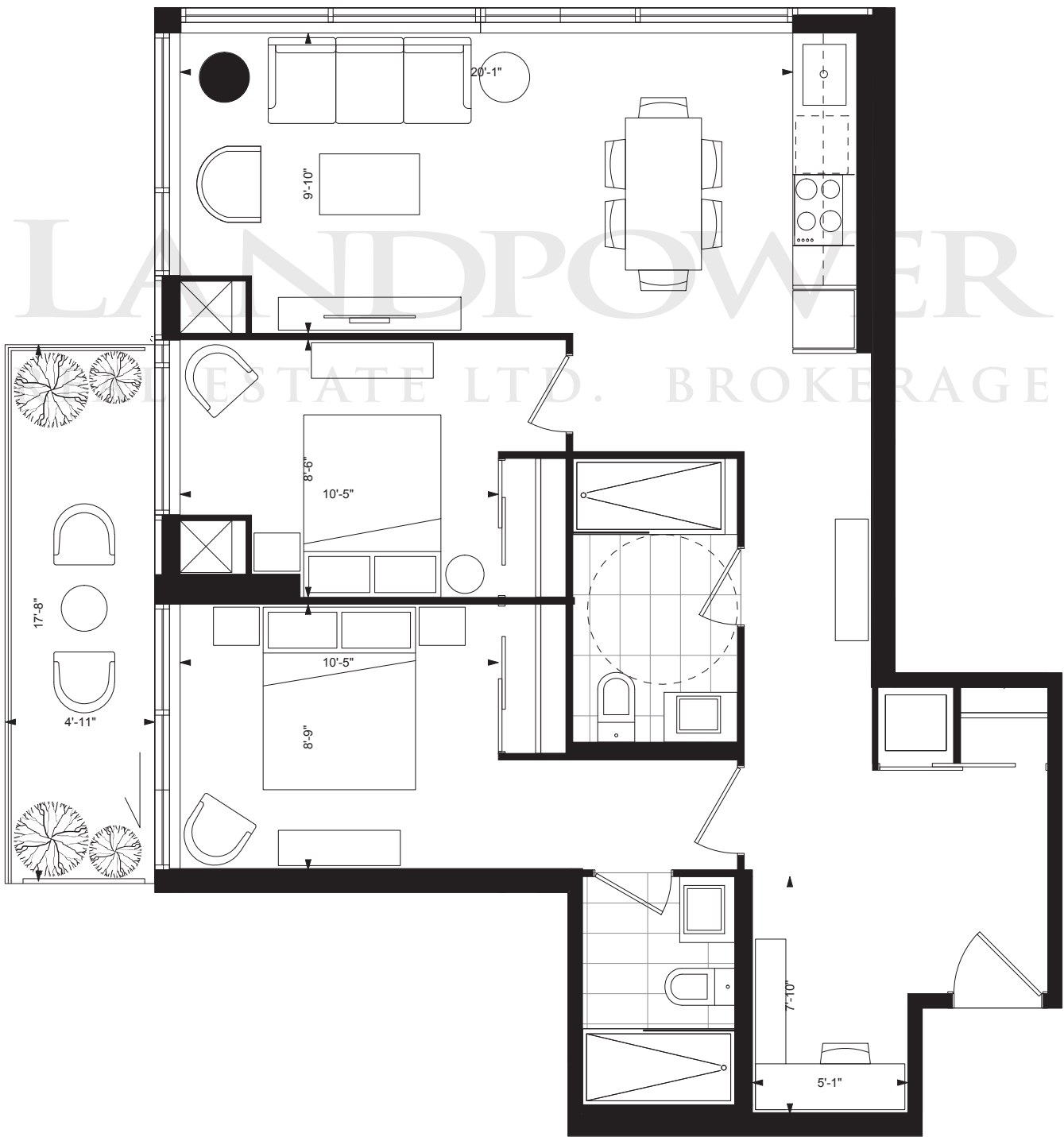
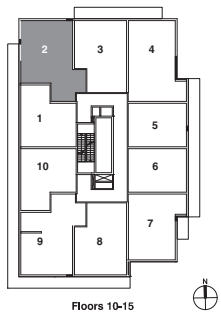
CUMBERLAND NORTH

two bedroom + den / 834 sq. ft.  
balcony 283 sq. ft.



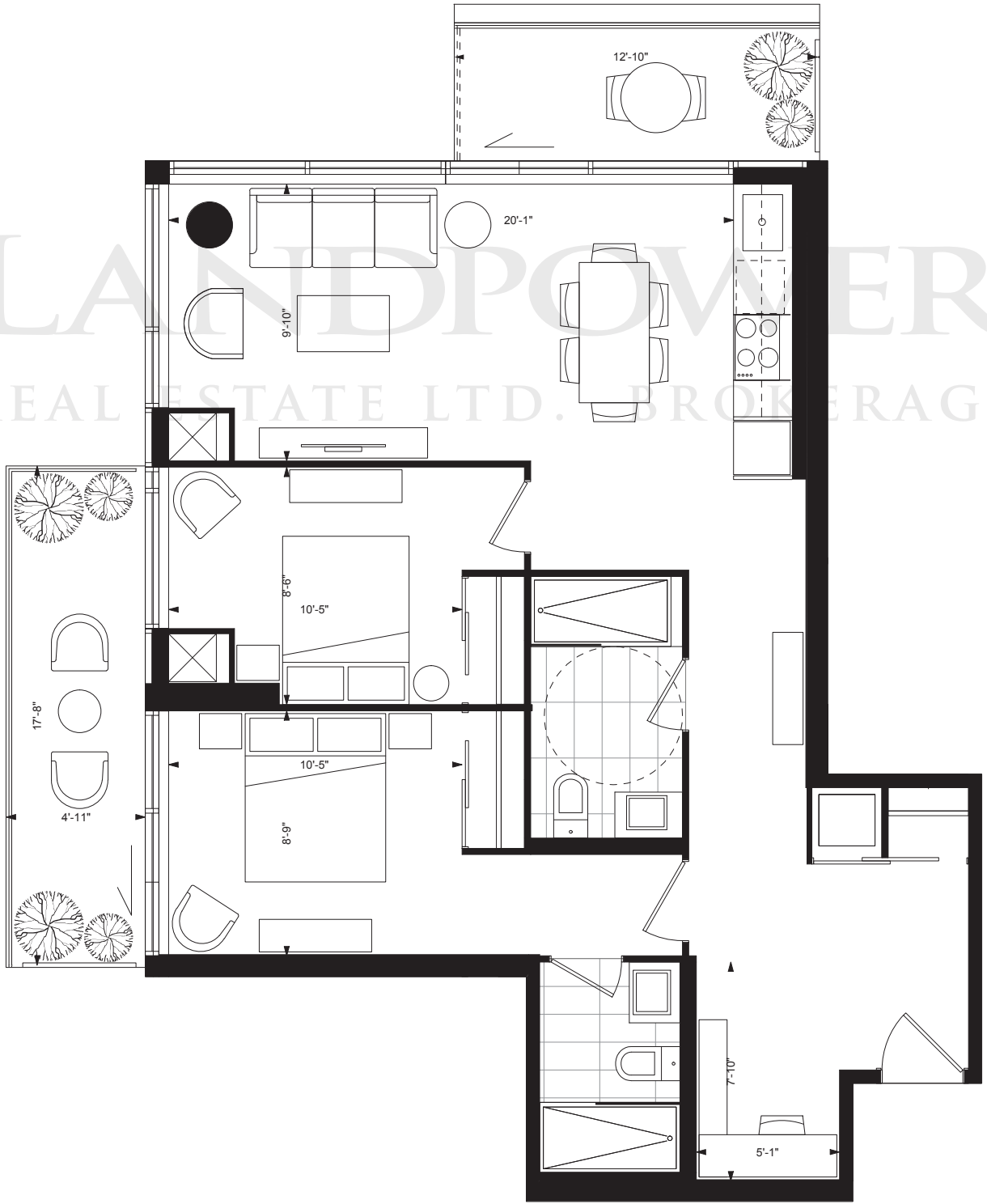
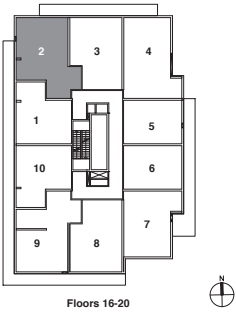
CUMBERLAND NORTH

two bedroom + den / 834 sq. ft.  
balcony 87 sq. ft.



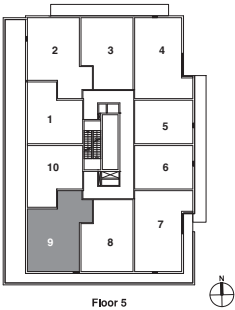
CUMBERLAND NORTH

two bedroom + den / 834 sq. ft.  
balcony 150 sq. ft.



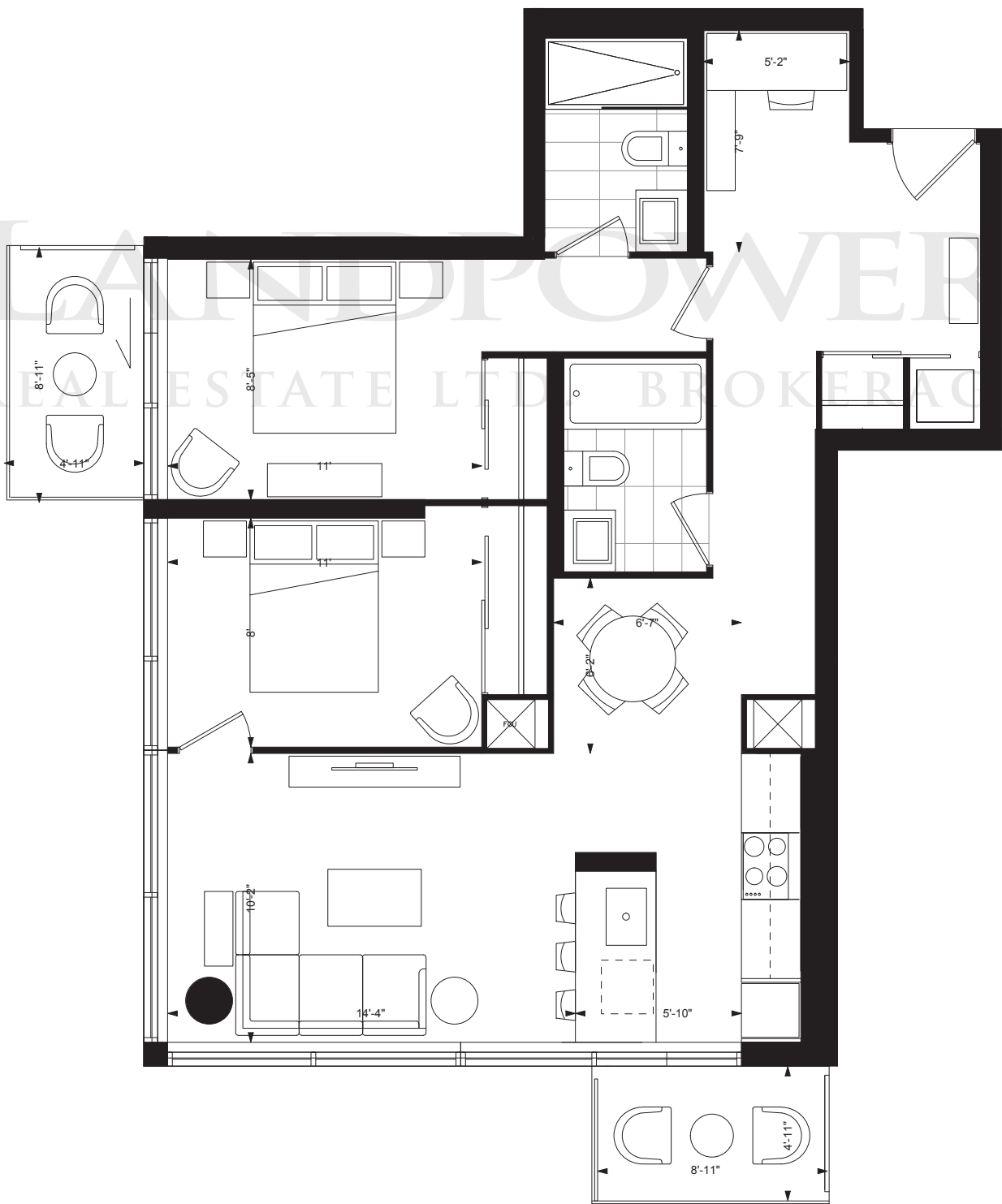
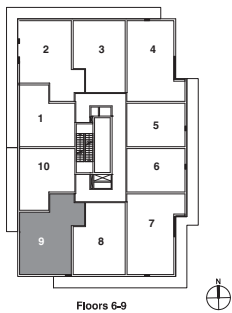
CUMBERLAND SOUTH

two bedroom + den / 834 sq. ft.  
terrace 393 sq. ft.



CUMBERLAND SOUTH

two bedroom + den / 834 sq. ft.  
balcony 85 sq. ft.



AYCCONDOS.COM

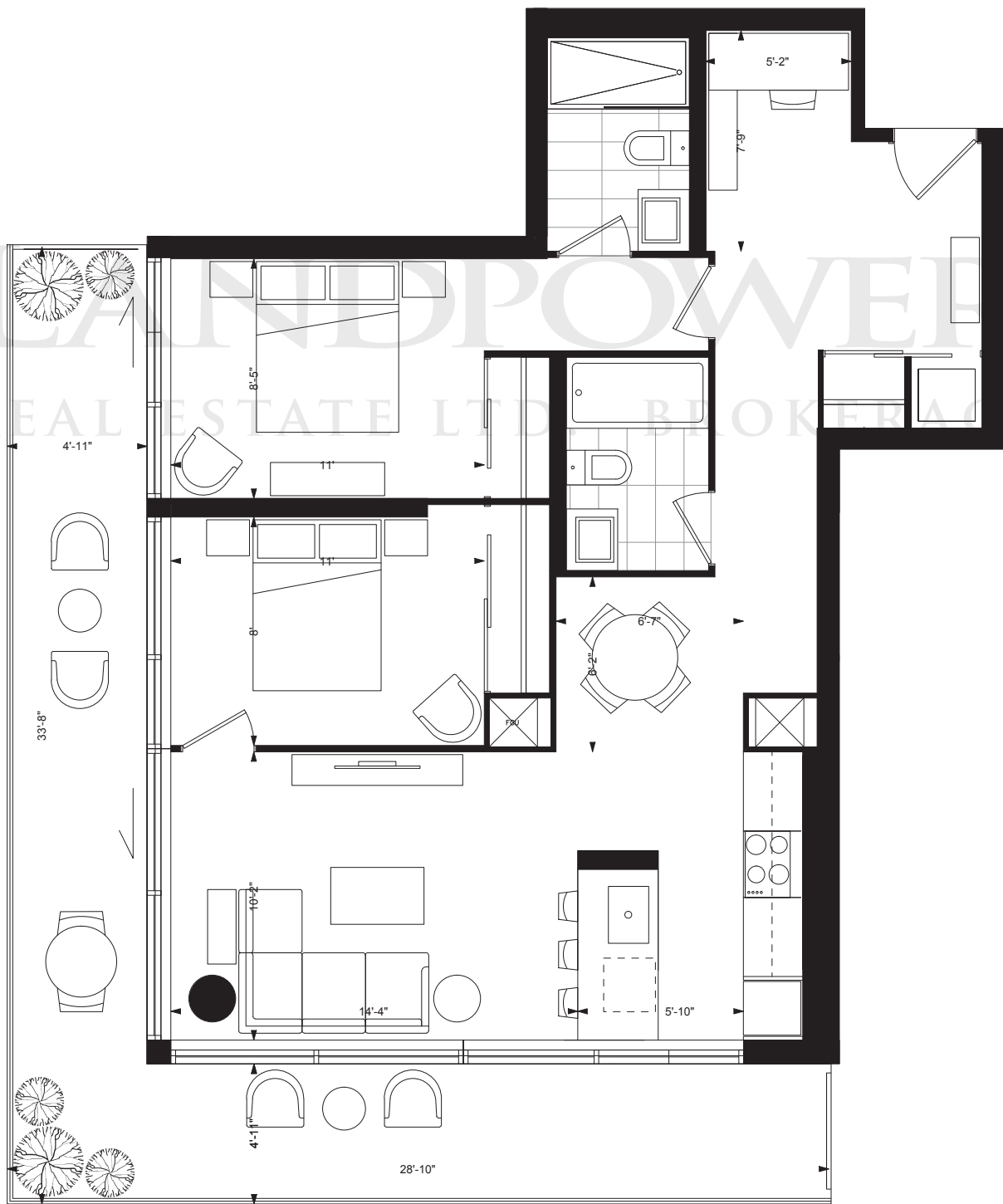
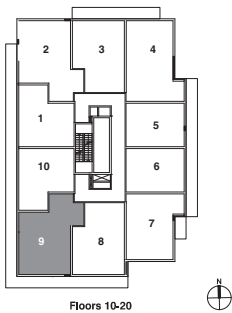
Prices and specifications subject to change without notice. E. & O.E. The dimensions shown on this plan are approximate only. Actual useable floor space within the unit may vary from any stated floor areas or dimensions on this plan. For more information on the method used for calculating the floor area of any unit reference should be made to builder bulletin no.22 Published by tarion. The size, location and/or configuration of the windows and spandrel glass shown may be changed, varied or mirrored.

METROPIA™

Diamondcorp

CUMBERLAND SOUTH

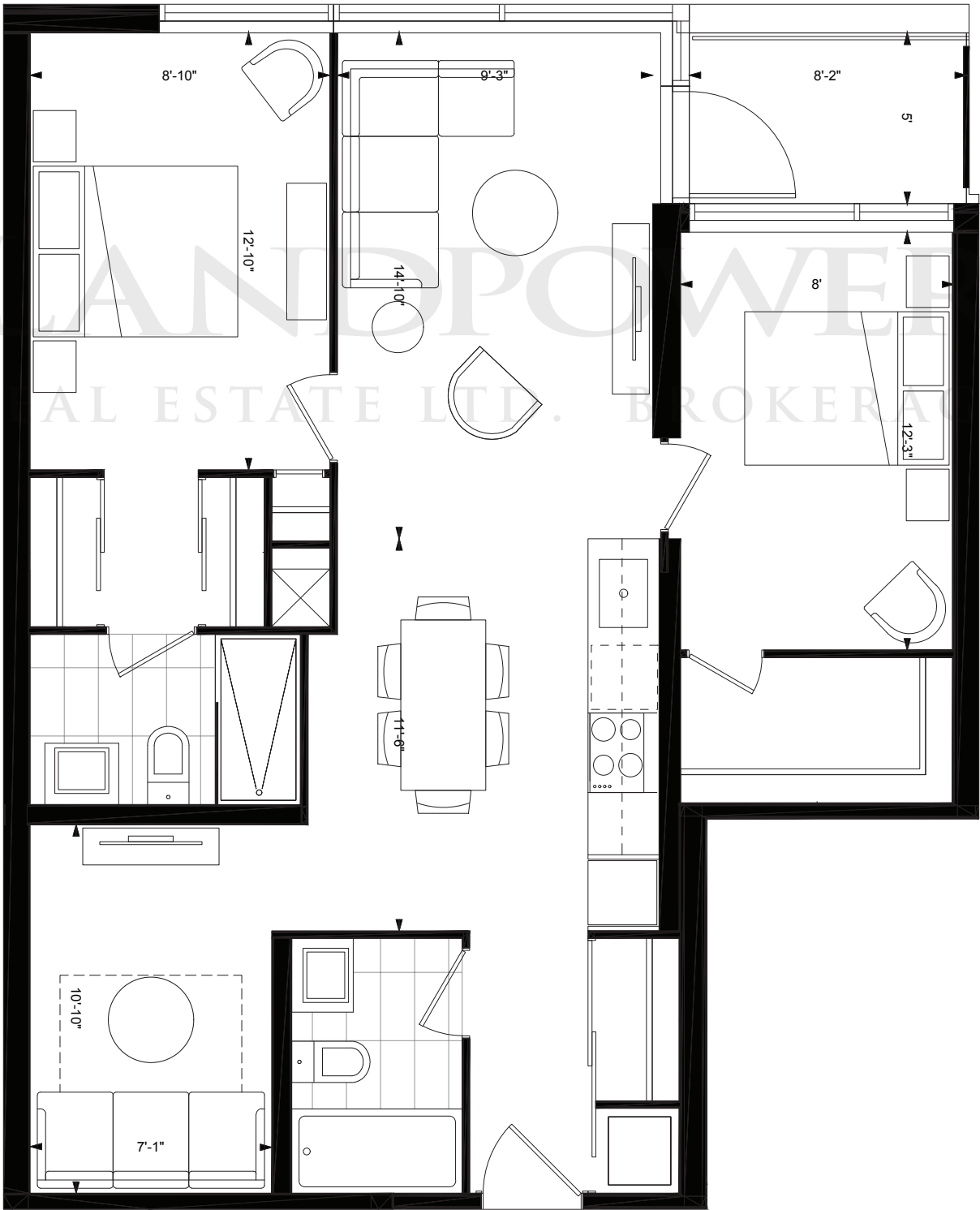
two bedroom + den / 834 sq. ft.  
balcony 283 sq. ft.



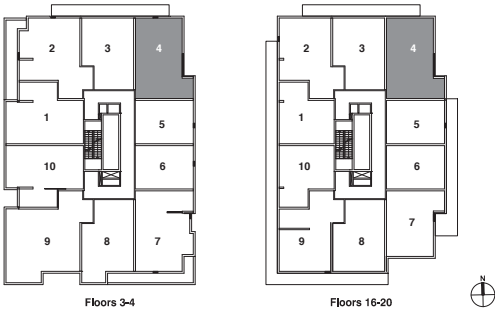


# UNIVERSITY

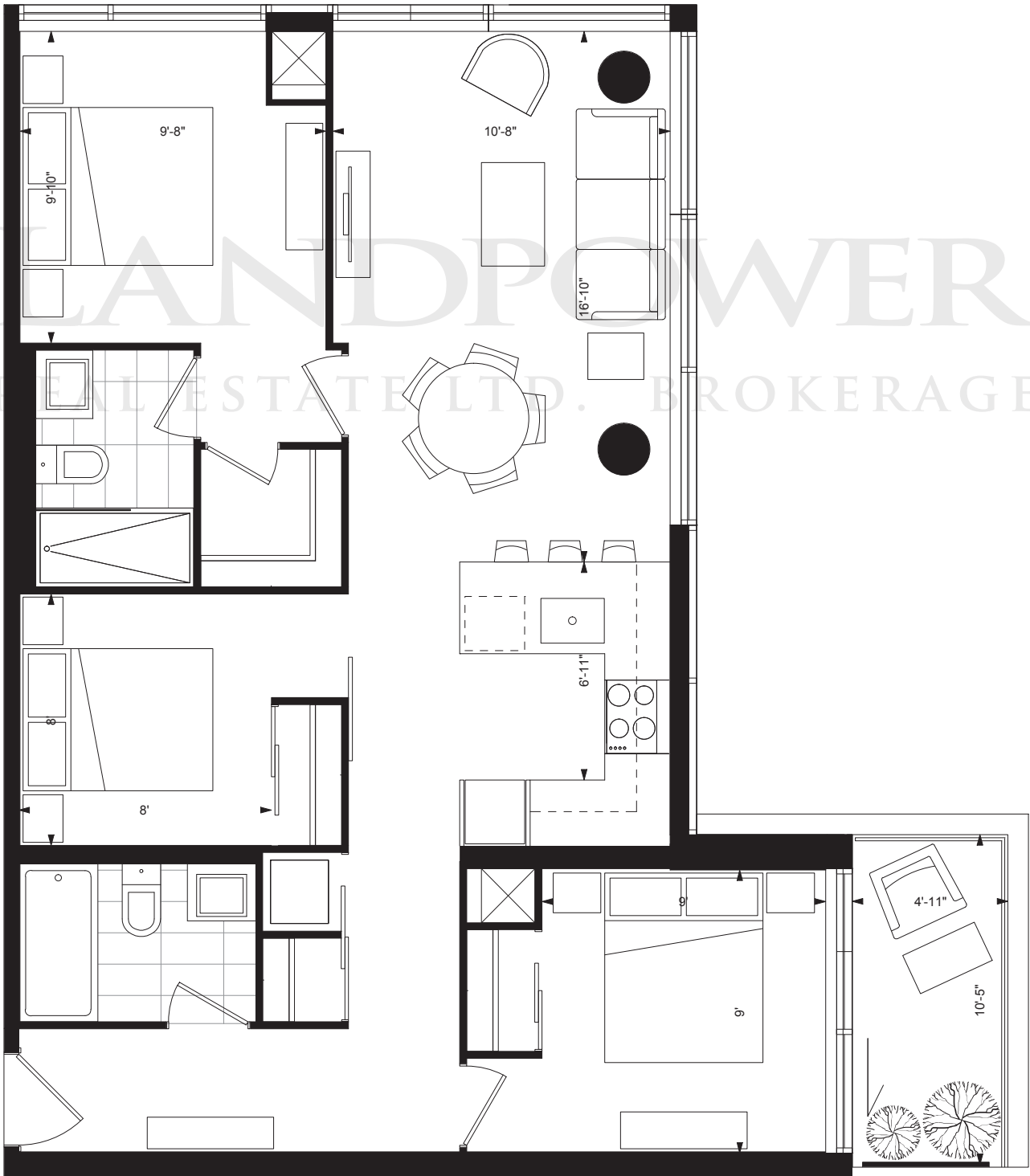
*two bedroom + den / 843 sq. ft.*  
*balcony 41 sq. ft.*



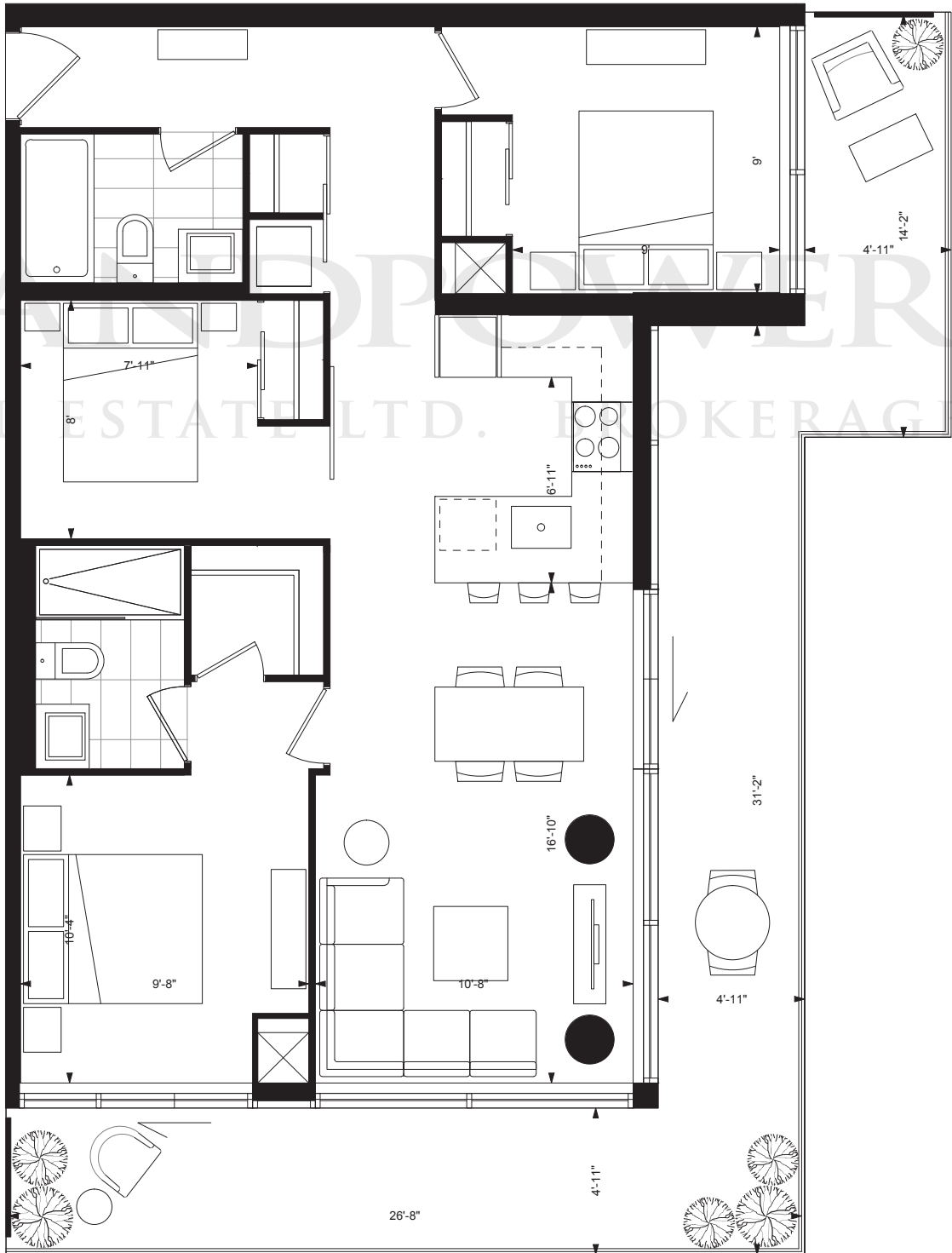
AVENUE NORTH  
three bedroom / 853 sq. ft.  
balcony 75 sq. ft.



AVENUE NORTH  
three bedroom / 853 sq. ft.  
balcony 51 sq. ft.

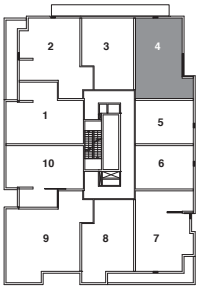


AVENUE SOUTH  
three bedroom / 853 sq. ft.  
balcony 331 sq. ft.

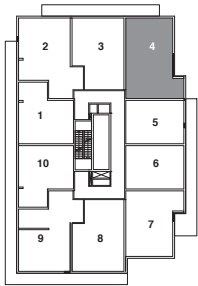


AVENUE ALT

two bedroom + den / 853 sq. ft.  
balcony 75 sq. ft.



Floors 3-4

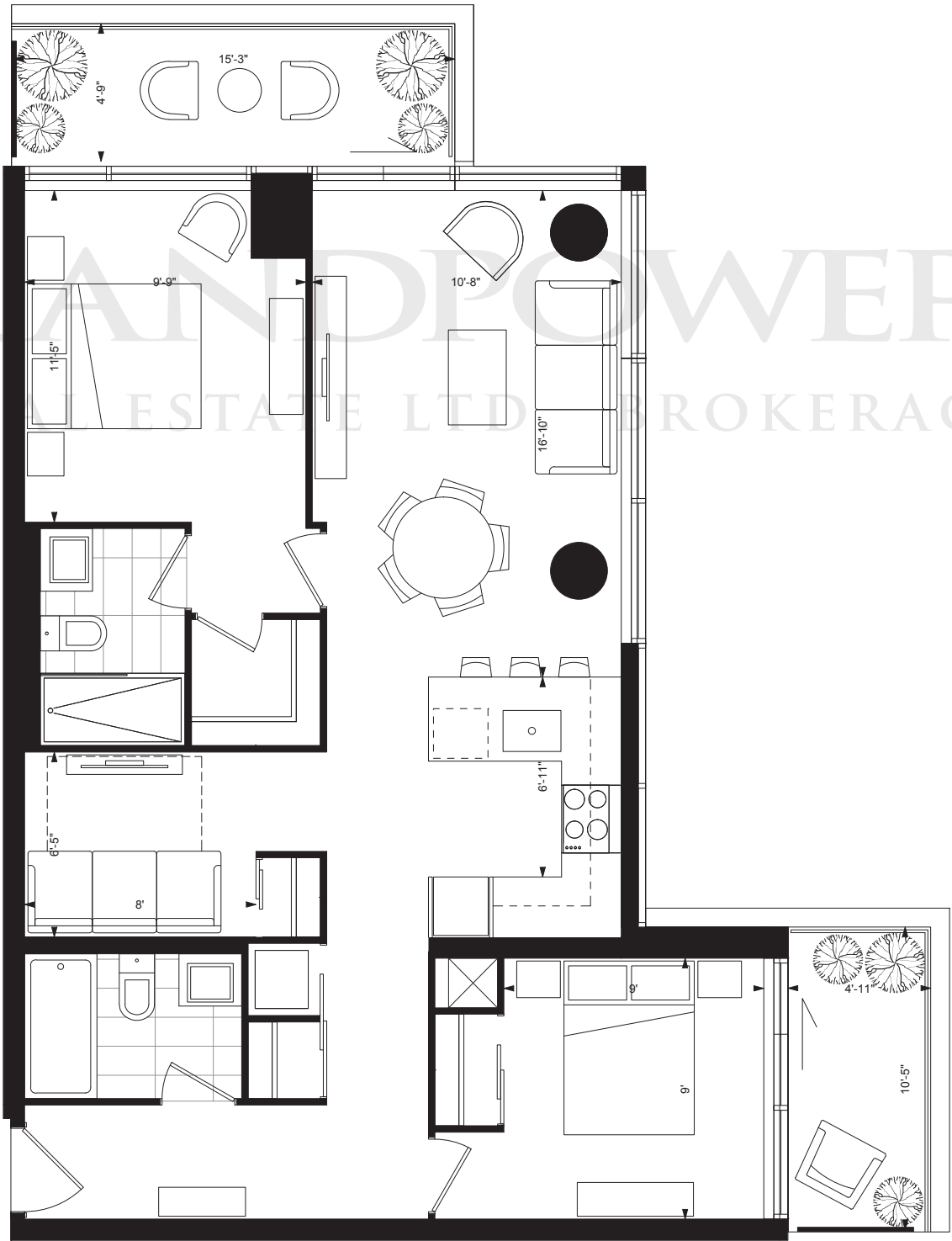


Floors 16-20



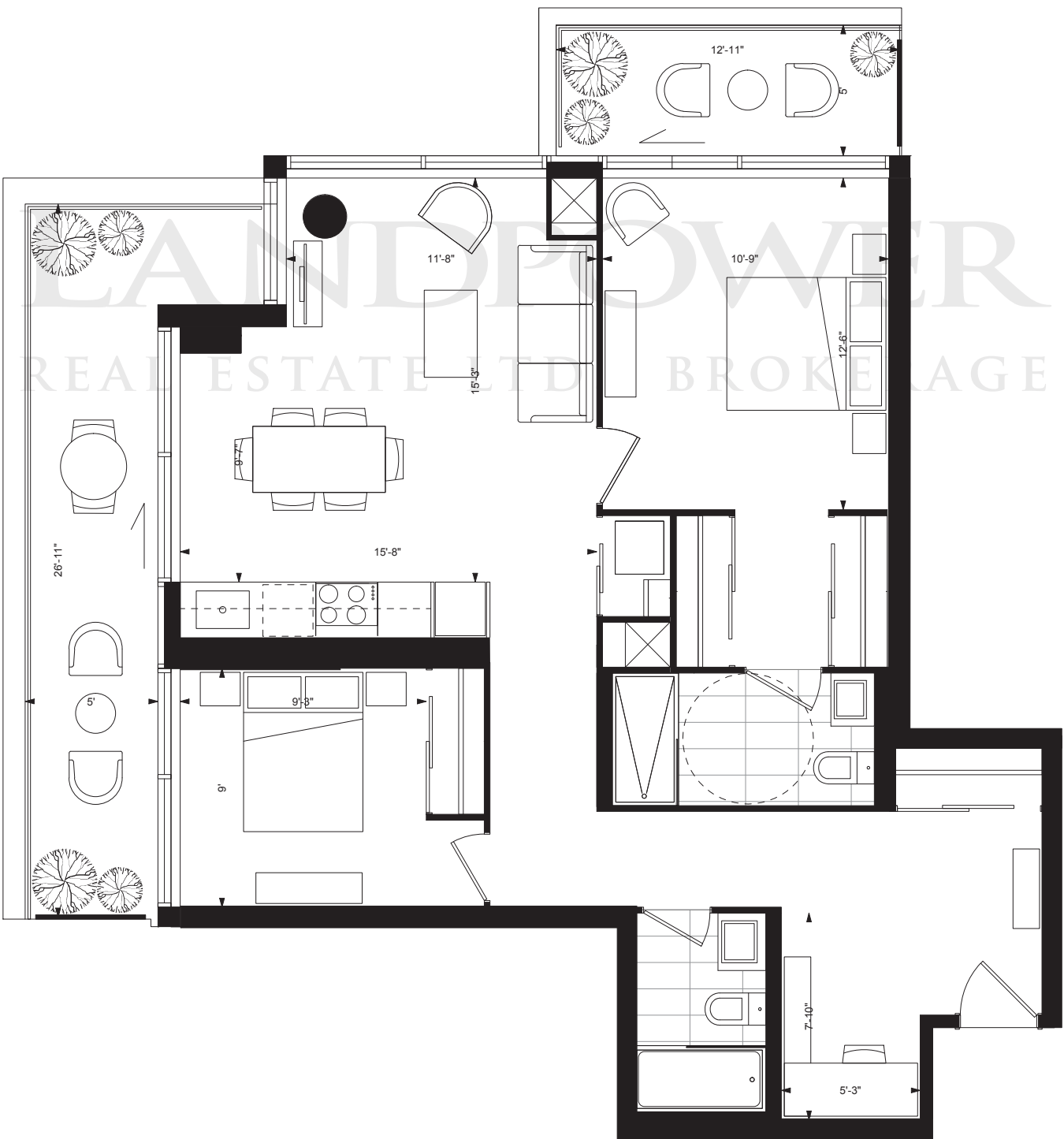
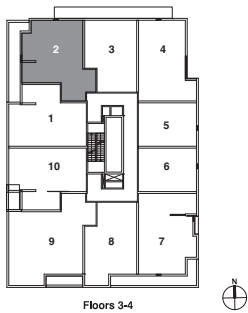
AVENUE ALT

two bedroom + den / 853 sq. ft.  
balcony 126 sq. ft.



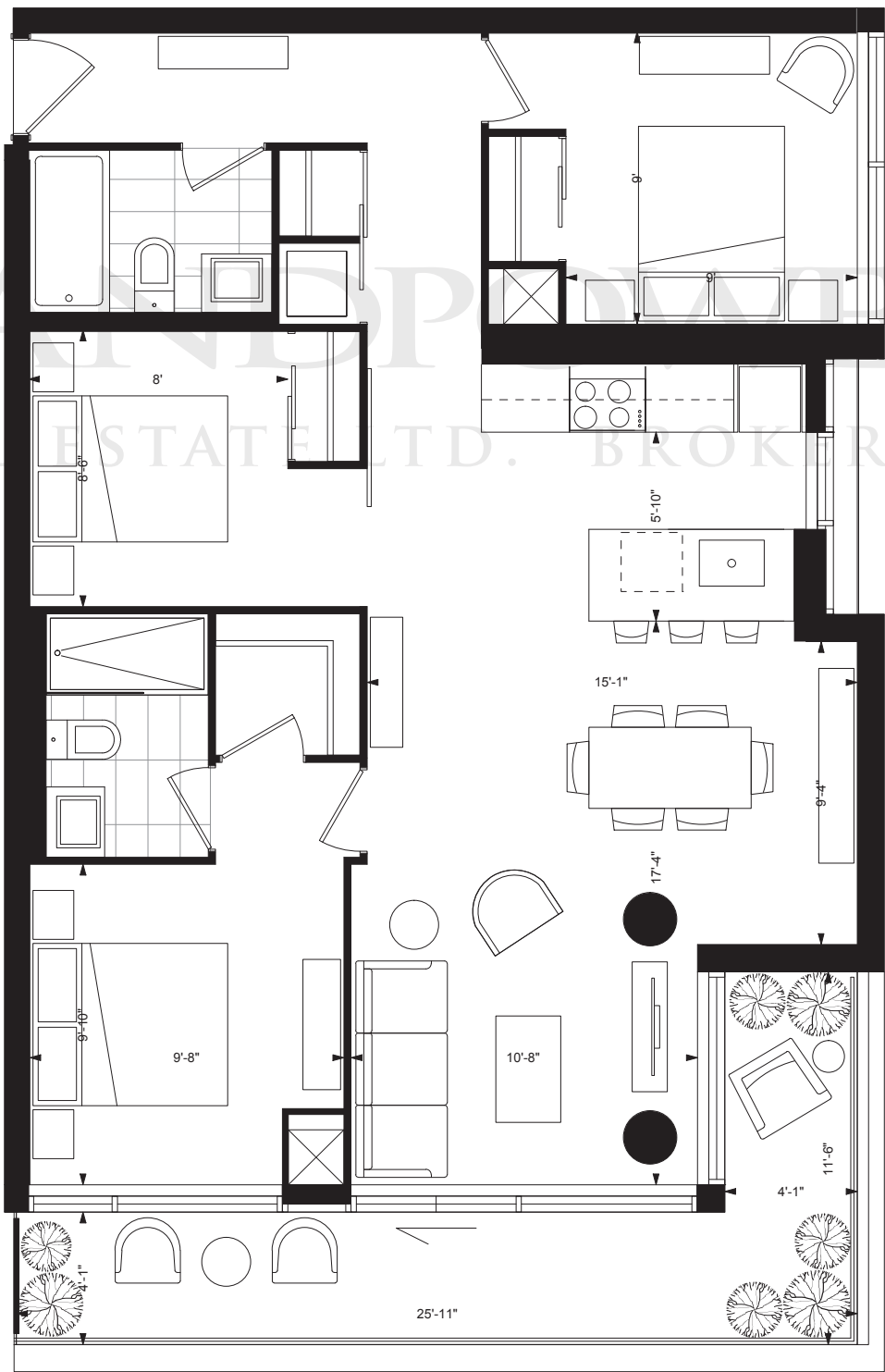
# RAMSDEN

*two bedroom + den / 926 sq. ft.*  
*balcony 214 sq. ft.*



# BEDFORD

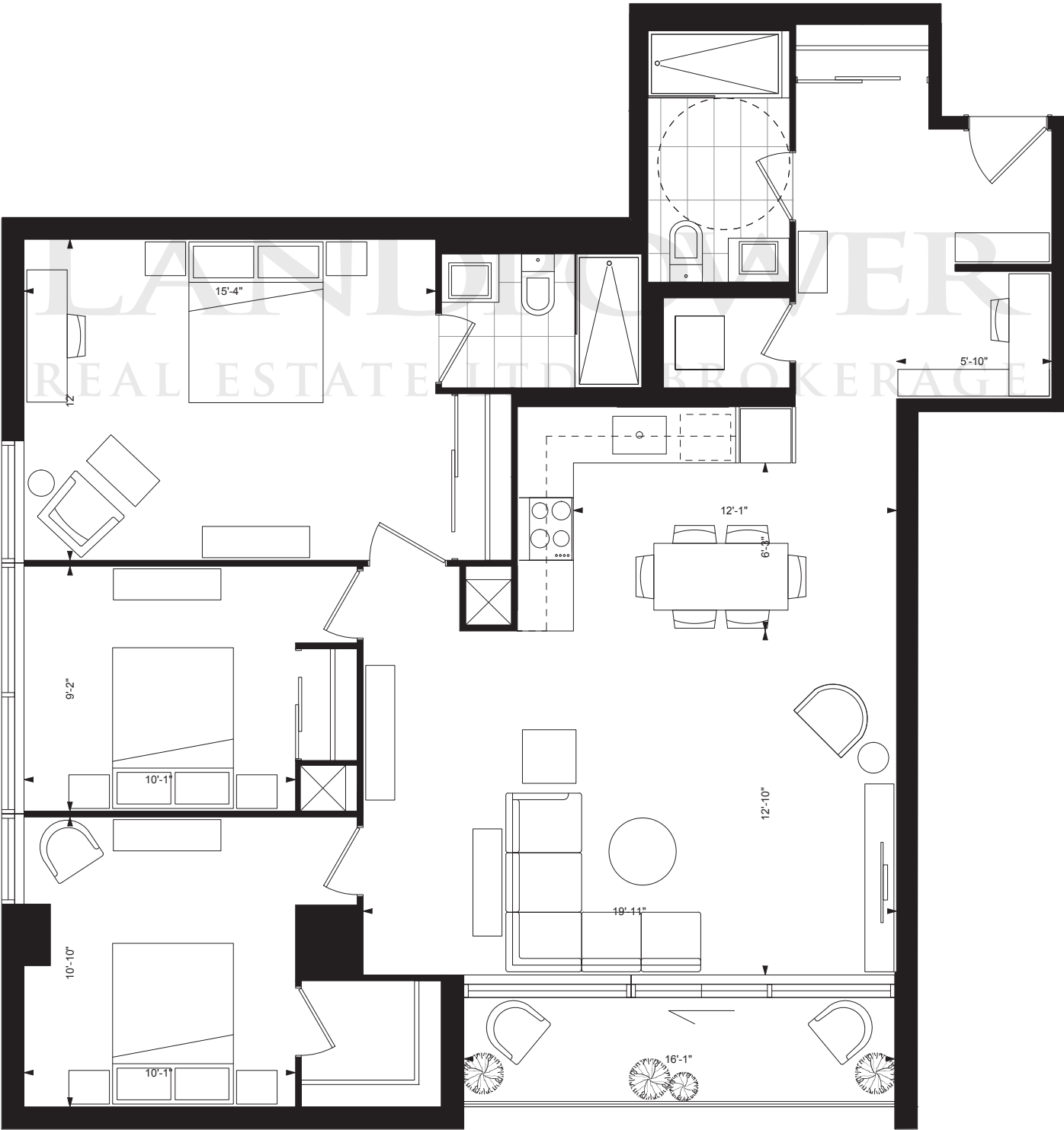
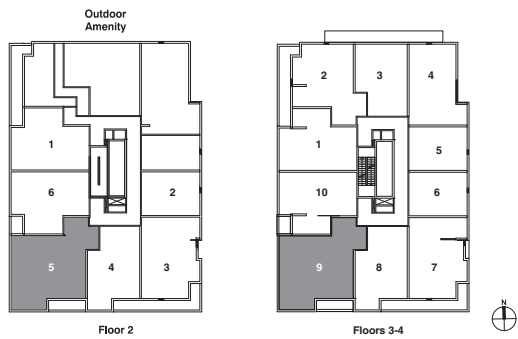
three bedroom / 933 sq. ft.  
balcony 135 sq. ft.





MARTEL

three bedroom / 1201 sq. ft.  
balcony 66 sq. ft.



# FEATURES & FINISHES

## REFINED CONTEMPORARY LIVING AREAS

- Extra spacious ceiling heights of approximately 10' on floors 21-25. (Where bulkheads are required for mechanical or other purposes — such as kitchen and bathroom exhausts, heating and cooling duct work — ceiling heights may be reduced.)
- Smooth finished ceilings
- Purchaser's choice from a selection of designer pre-finished engineered flooring throughout (except in bathroom and laundry)
- Secure and stylish solid core entry door
- Architectural finishes including modern flat profile baseboards and contemporary trim
- 5" baseboards and 3" casing to be painted white
- Stacked washer and dryer, size indicated as per plan
- Balcony or Terrace, as per plan
- In suite fan coil cooling and heating system
- Pot lights in bathrooms, entry foyer
- Prewired for technology and communication

## SPA INSPIRED BATHROOMS

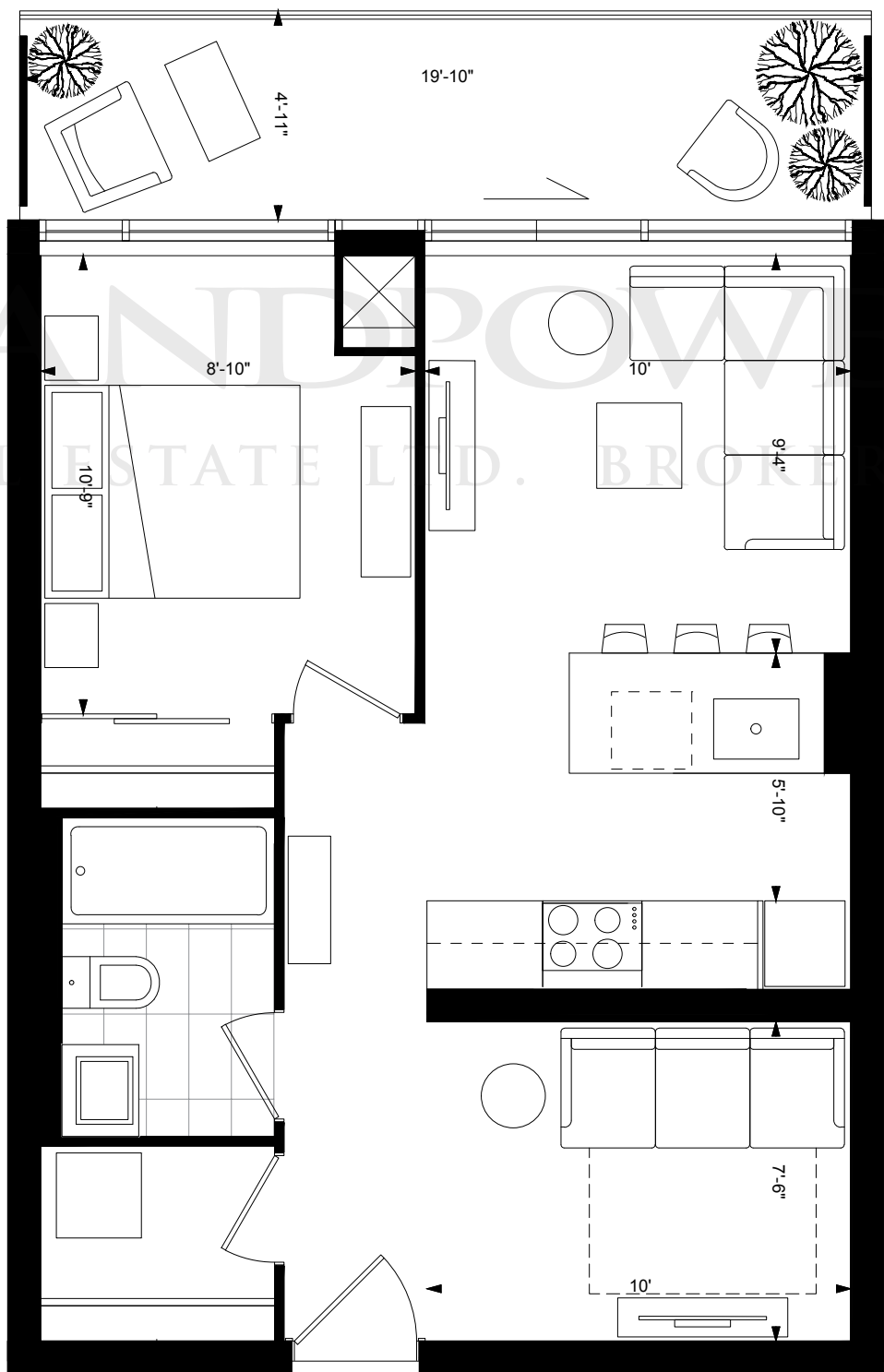
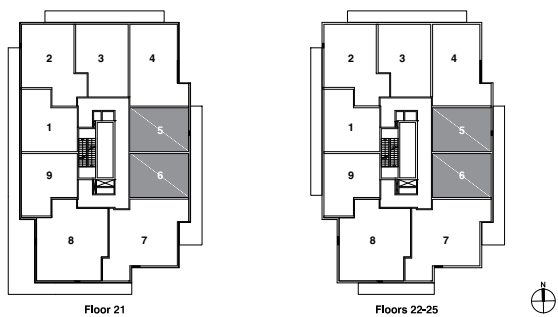
- Custom designed cabinetry in a variety of finishes and colours, from the Vendor's standard samples.
- Ultra-modern solid surface countertop with sink and single lever faucet
- Mirror with sconce lighting
- Choice of porcelain tile flooring
- High efficiency low flow toilet
- Plumbing fixtures
- Soaker tub, as per plan
- Frameless glass shower with tiled base, as per plan
- Shower with rain shower head
- Bathroom accessory package
- Medicine cabinets in master ensuite bathroom

## EXQUISITE CHEF'S KITCHEN

- Custom design kitchen cabinetry in choice of finishes and colours, from Vendor's standard samples.
- Quartz countertop with tile backsplash, from Vendor's standard samples
- Single undermount stainless steel sink with contemporary design faucet with integrated pull-out spray
- Kitchens in suites from floors 21-25 to contain integrated 24" refrigerator, built-in oven with cook top, microwave & hood fan combination (OTR), and integrated dishwasher

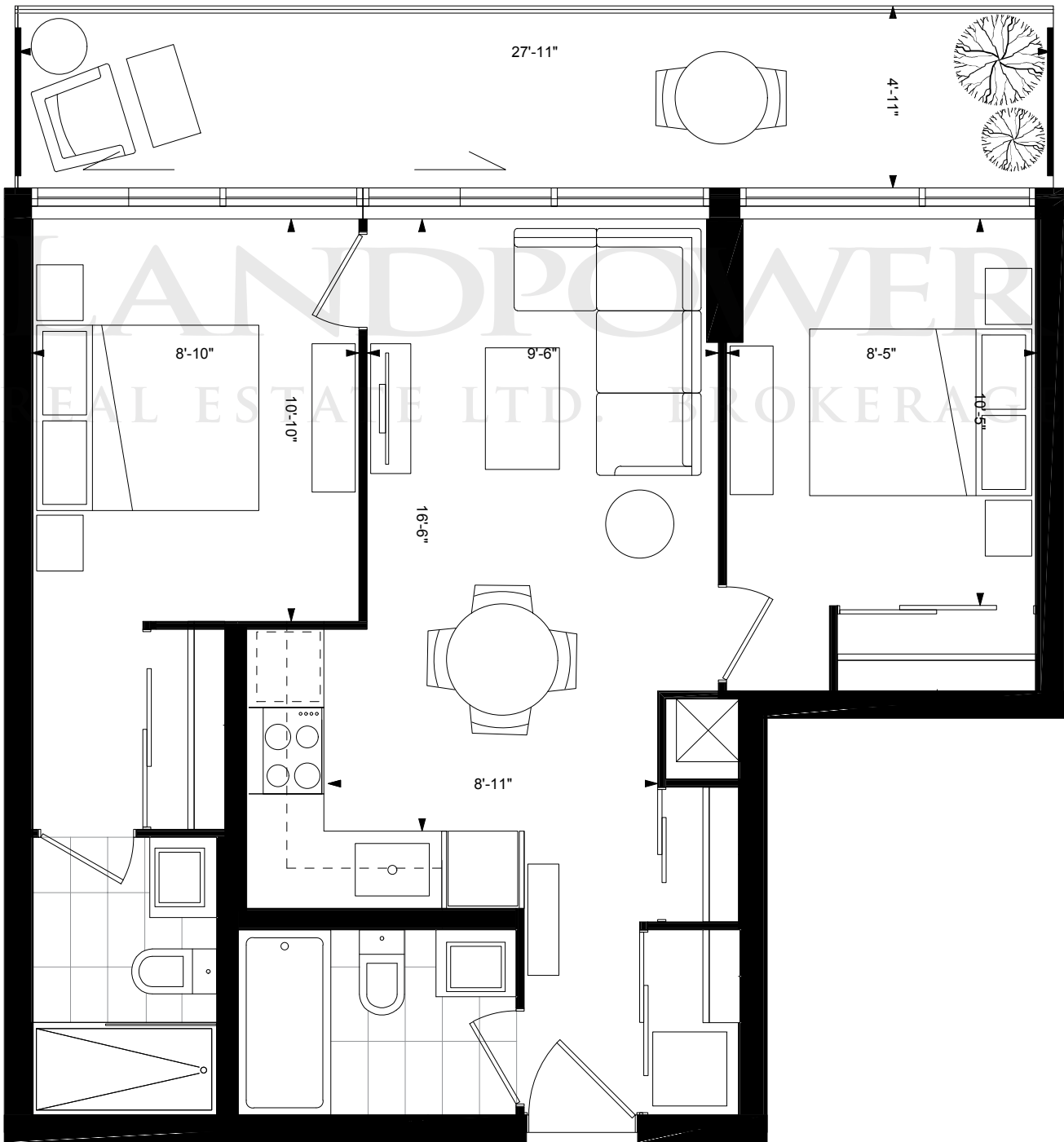
ANNEX

one bedroom + den / 531 sq. ft.  
balcony / 98 sq. ft.



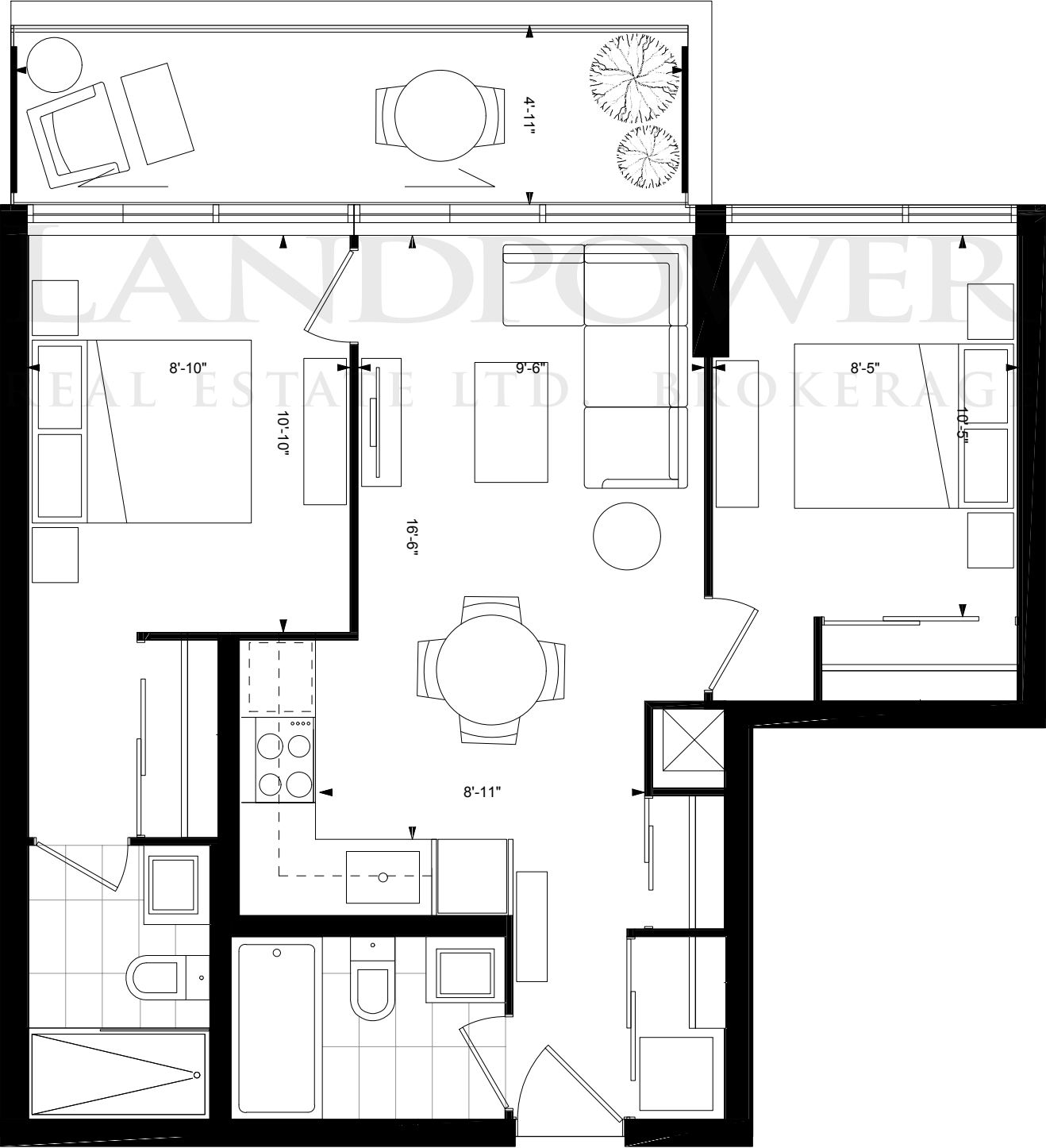
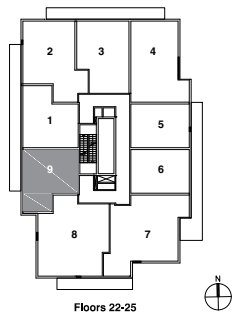
# DAVENPORT

*two bedroom / 616 sq. ft.*  
*balcony / 137 sq. ft.*



# DAVENPORT

*two bedroom / 616 sq. ft.*  
*balcony / 91 sq. ft.*



**AYCCONDOS.COM**

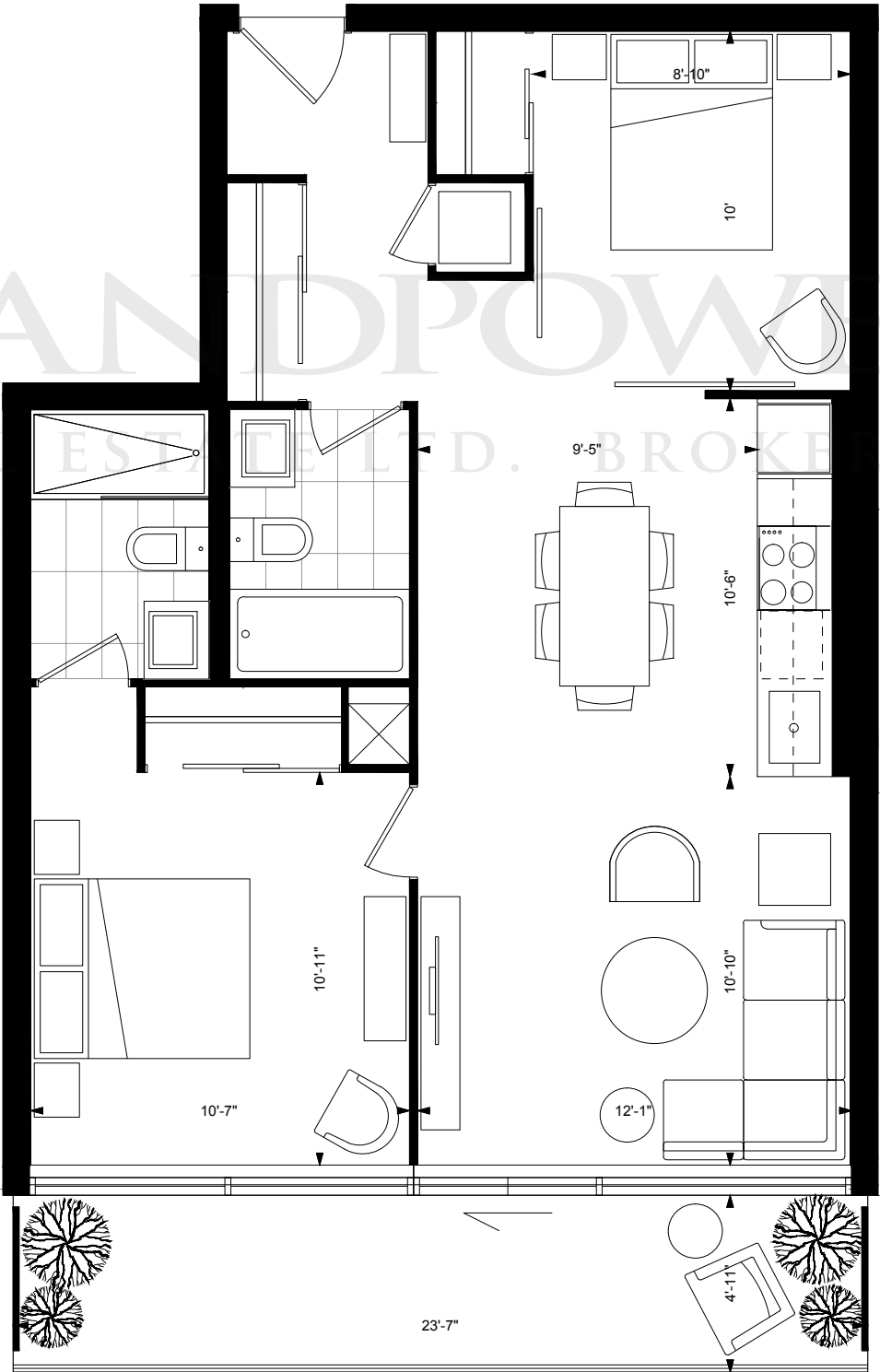
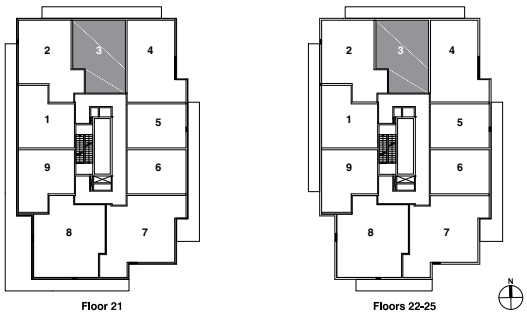
Prices and specifications subject to change without notice. E. & O.E. The dimensions shown on this plan are approximate only. Actual useable floor space within the unit may vary from any stated floor areas or dimensions on this plan. For more information on the method used for calculating the floor area of any unit reference should be made to builder bulletin no.22 Published by tarion. The size, location and/or configuration of the windows and spandrel glass shown may be changed, varied or mirrored.

**METROPIA**



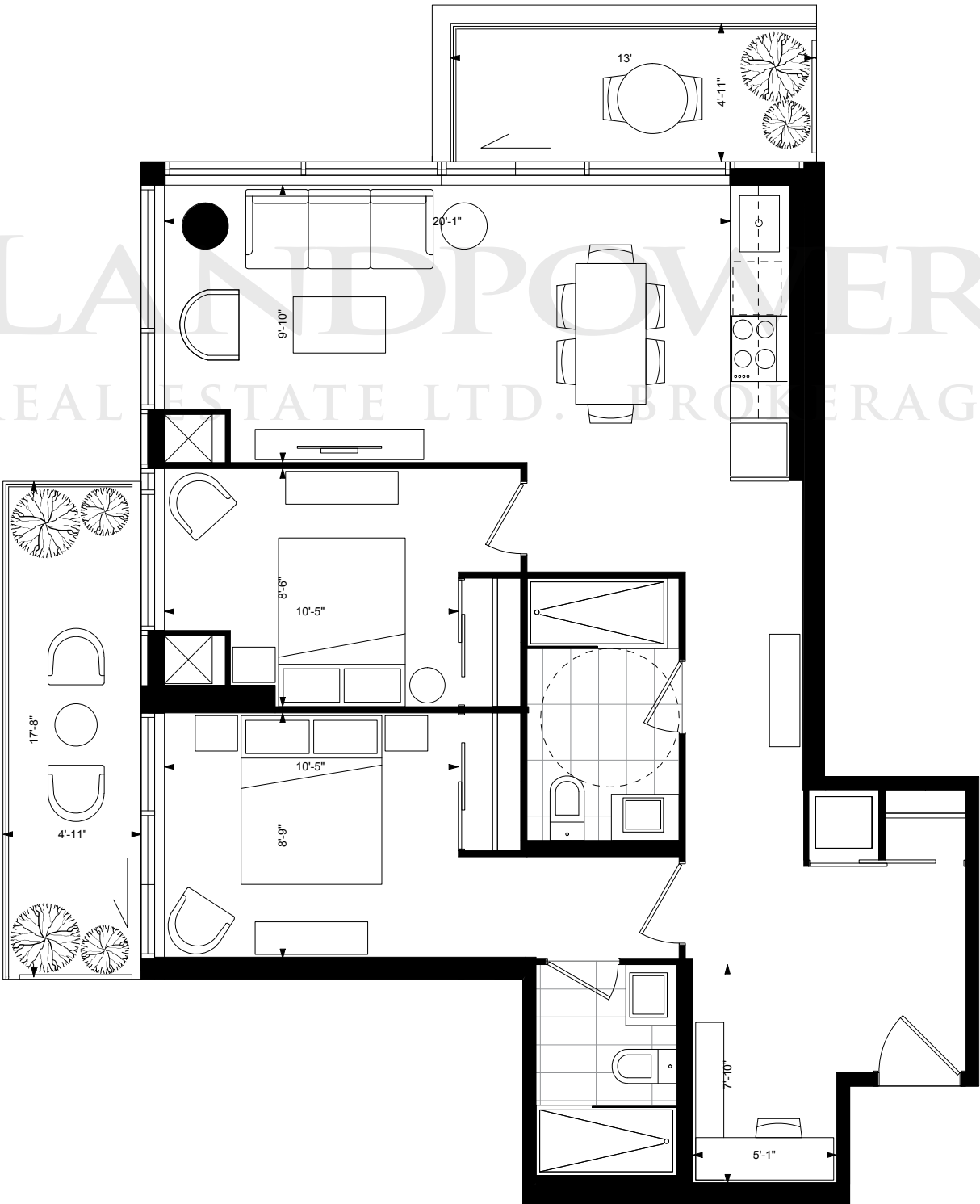
VARSIITY

two bedroom / 712 sq. ft.  
balcony / 116 sq. ft.



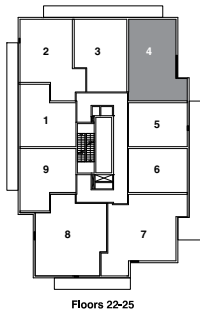
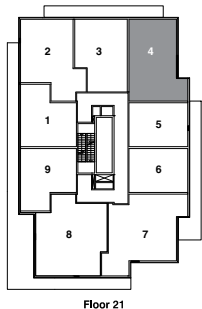
CUMBERLAND NORTH

two bedroom + den / 834 sq. ft.  
balcony / 150 sq. ft.



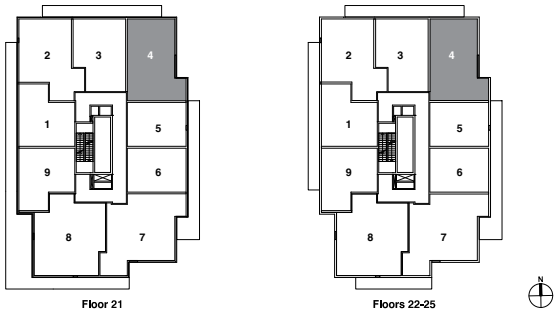
AVENUE ALT

two bedroom + den / 853 sq. ft.  
balcony / 76 sq. ft.



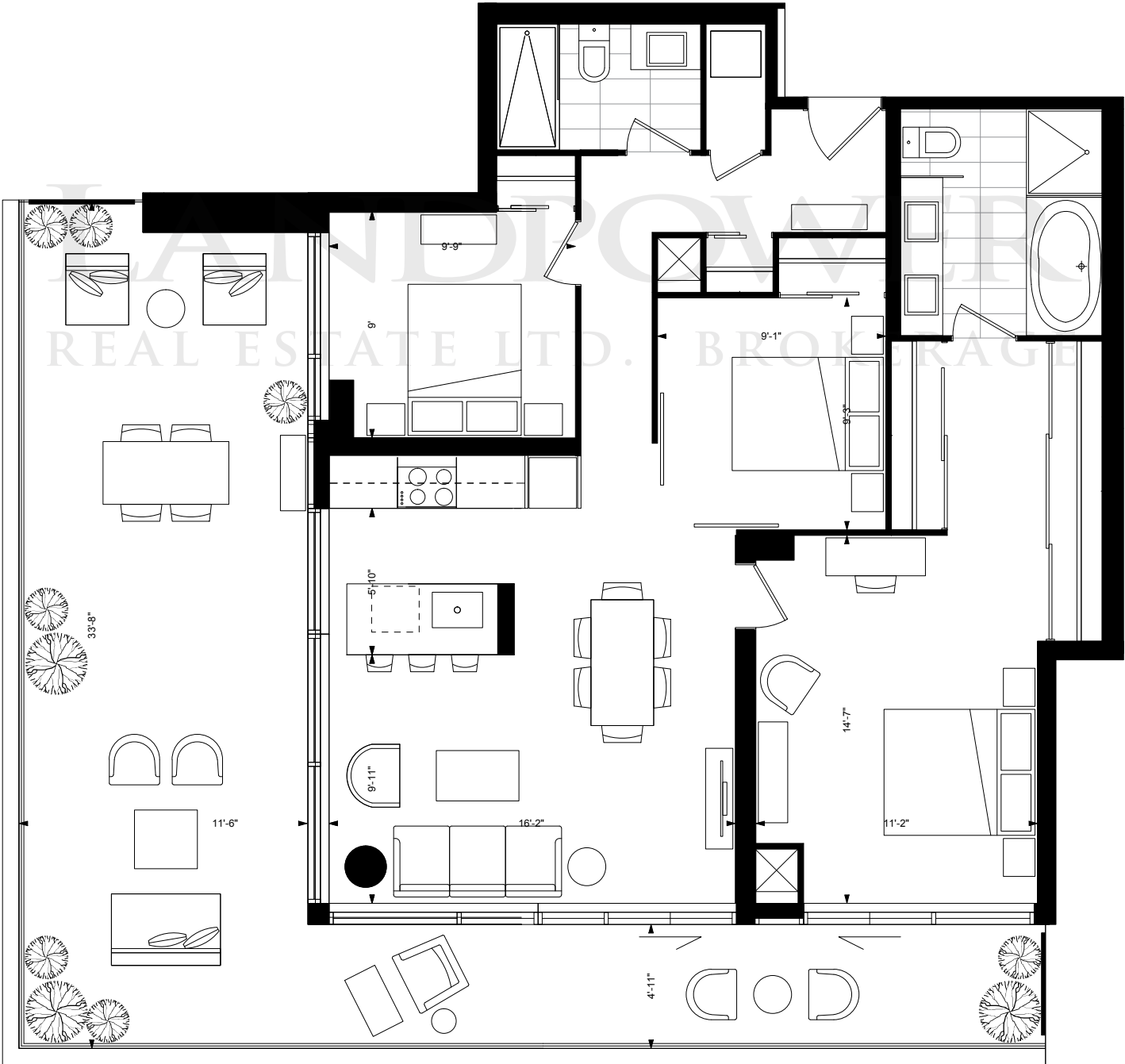
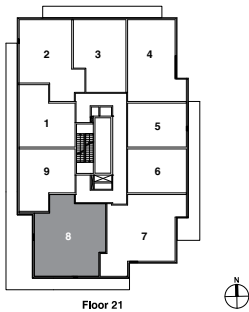


AVENUE NORTH  
*three bedroom / 853 sq. ft.*  
*balcony / 76 sq. ft.*



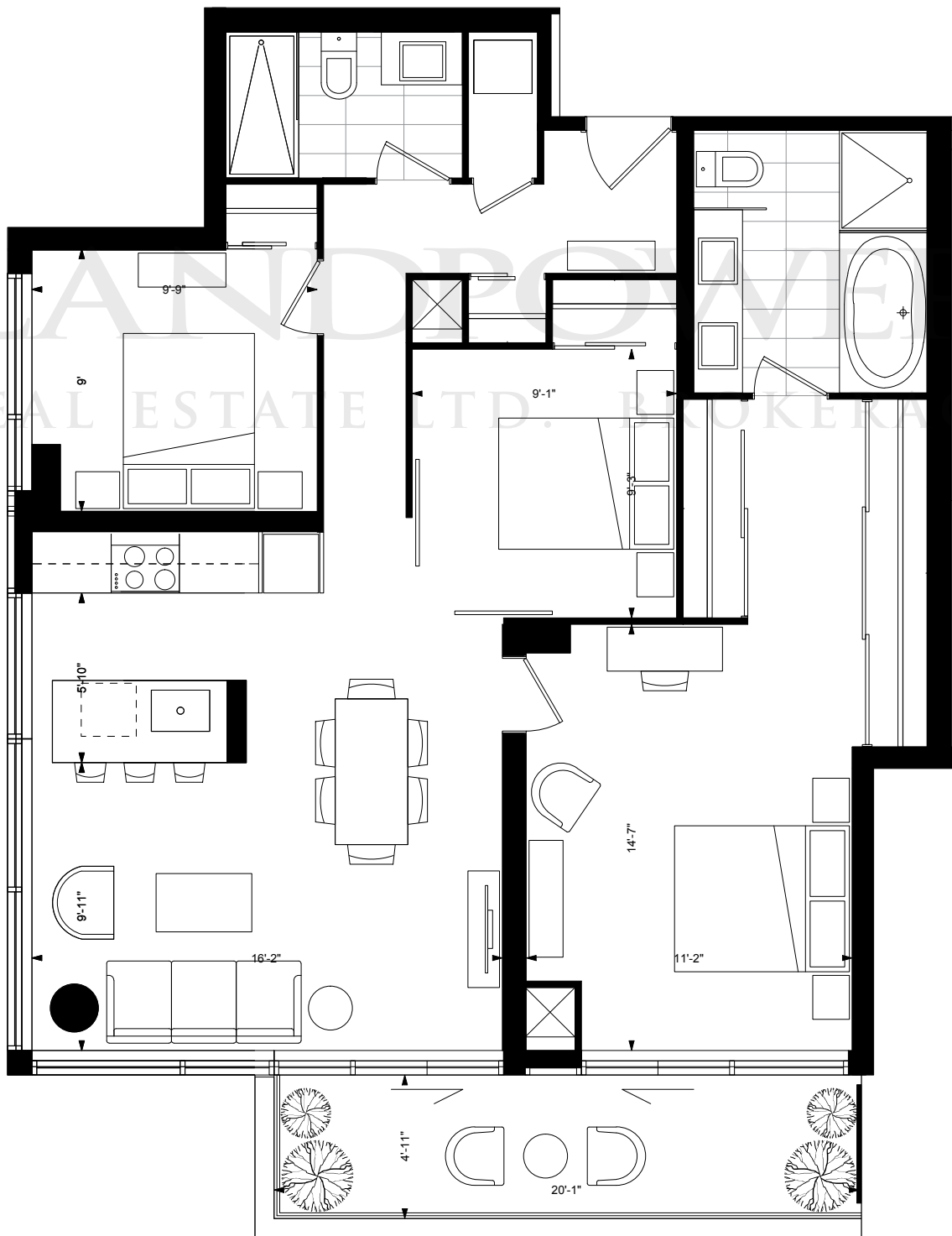
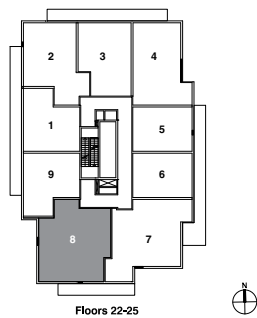
# FLOWER SHOP

three bedroom / 1036 sq. ft.  
balcony / 530 sq. ft.



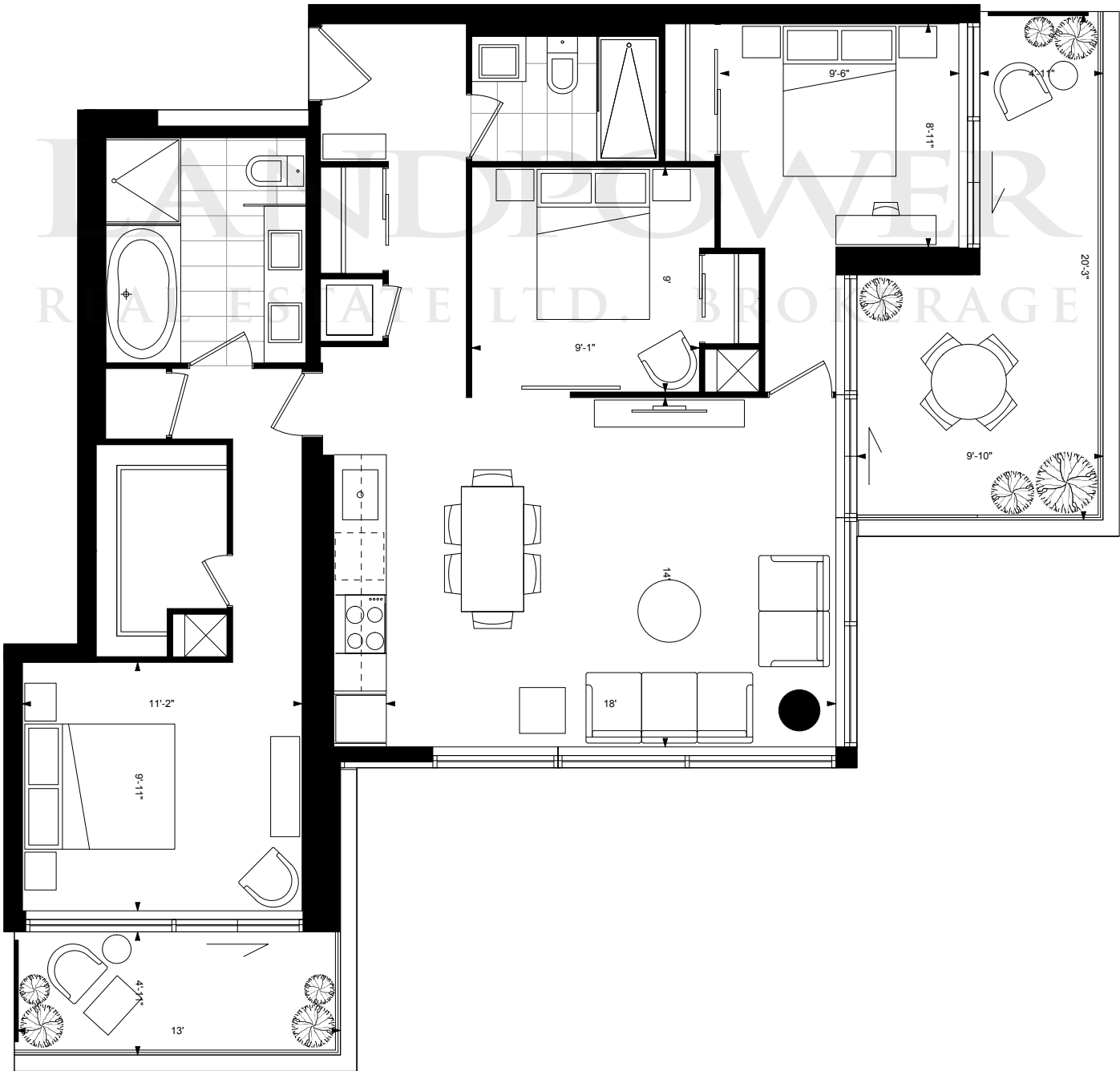
# FLOWER SHOP

three bedroom / 1036 sq. ft.  
balcony / 107 sq. ft.



CHURCHILL

three bedroom / 1036 sq. ft.  
balcony / 212 sq. ft.



# FEATURES & FINISHES

## REFINED CONTEMPORARY LIVING AREAS

- Extra spacious ceiling heights of approximately 10'0" on floors 26-27. (Where bulkheads are required for mechanical or other purposes — such as kitchen and bathroom exhausts, heating and cooling duct work — ceiling heights may be reduced.)
- Smooth finished ceilings
- Purchaser's choice from a selection of 7" wide engineered plank flooring throughout (except in bathroom and laundry)
- Secure and stylish solid core entry door
- Architectural finishes including modern flat profile baseboards and contemporary trim
- 7" baseboards and 4" casing to be painted white
- Stacked washer and dryer
- Balcony or Terrace, as per plan featuring natural gas barbecue connection
- In suite fan coil cooling and heating system
- Prewired for technology and communication
- Closet organizer in master bedroom, as per plan
- Lavish crown moulding in the living room
- Pot lights in living/dining room, bathrooms, entry foyer

## SPA INSPIRED BATHROOMS

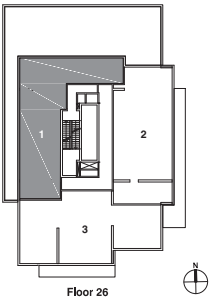
- Custom designed cabinetry in a variety of finishes and colours, from the Vendor's standard samples.
- Solid surface countertop with Integrated sink and single lever faucet
- Mirror with sconce lighting
- Choice of marble tile flooring & porcelain wall tiles
- High efficiency low flow toilet
- Plumbing fixtures
- Free standing tub, as per plan
- Frameless glass shower with tiled base, as per plan
- Shower with rain shower head and hand shower
- Heated floors with temperature control in master ensuite bathroom
- Bathroom accessory package
- Medicine cabinets in master ensuite bathroom

## EXQUISITE CHEF'S KITCHEN

- Custom design kitchen cabinetry in choice of finishes and colours, from Vendor's standard samples.
- Quartz countertop with matching backsplash, from Vendor's standard samples
- Solid surface waterfall island countertop, as per plan
- Single undermount stainless steel sink with contemporary design faucet with integrated pull-out spray
- Cabinet with valance lighting, as per plan
- Kitchen in suites to contain integrated 30" refrigerator, built-in oven with induction cook top, built-in microwave, stainless steel hood fan, and integrated dishwasher

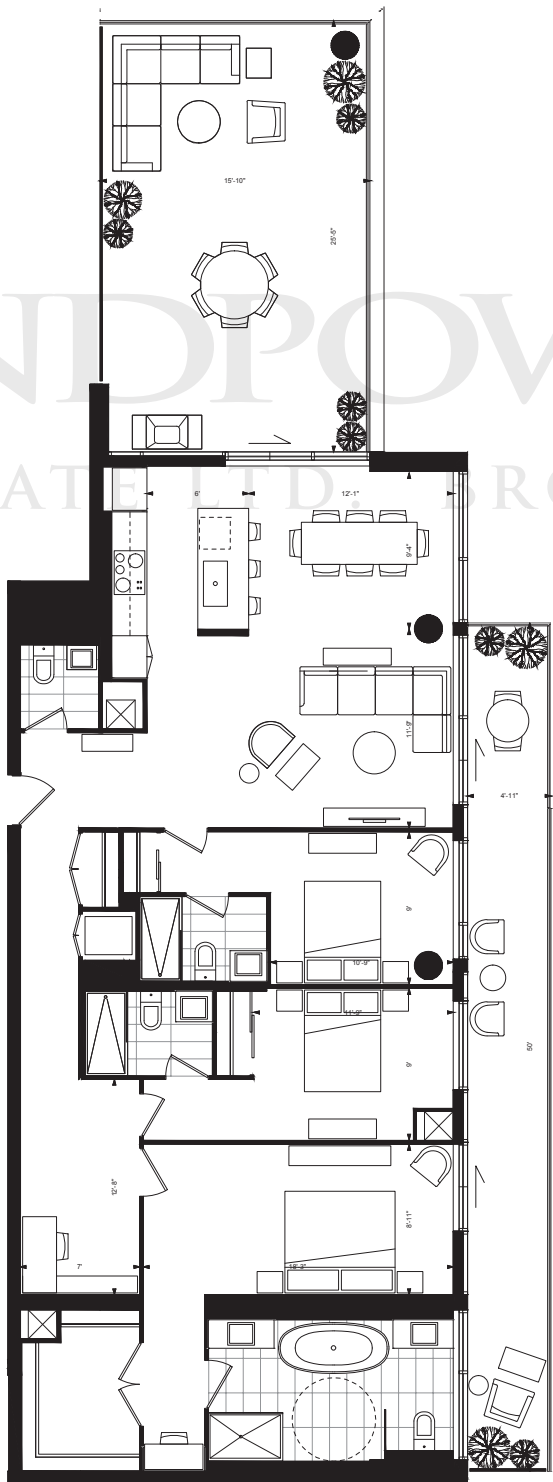
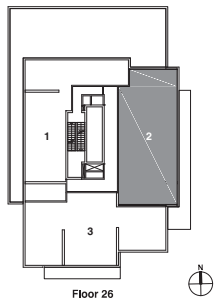
# YORKVILLE

*three bedroom / 1541 sq. ft.*  
*terrace / 1470 sq. ft.*



# SCOLLARD

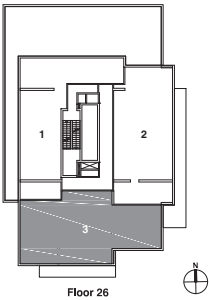
*three bedroom / 1580 sq. ft.  
terrace / 402 sq. ft. | balcony 246 sq. ft.*



LANDPOWER  
REAL ESTATE LTD. BROKERAGE

# HAZELTON

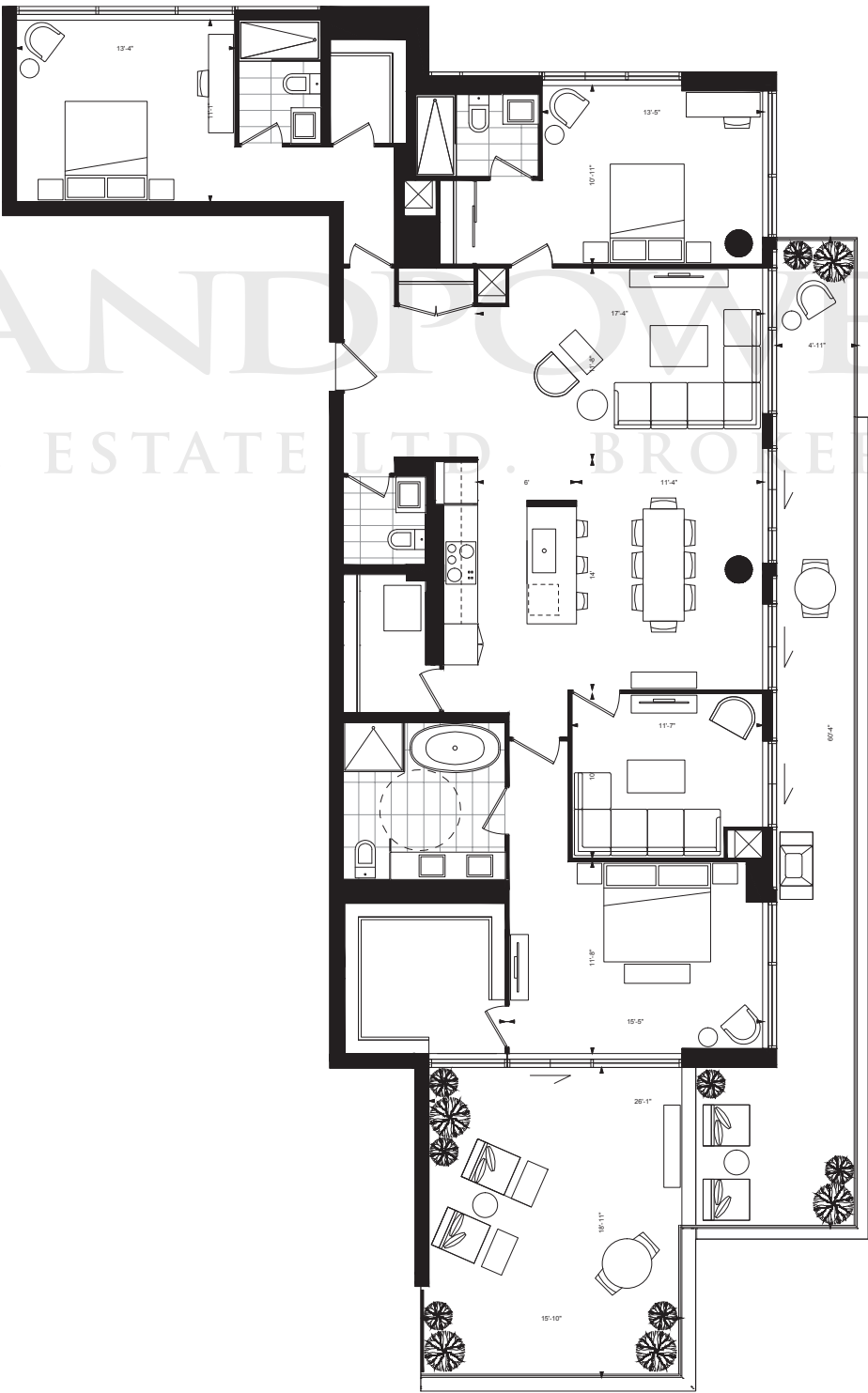
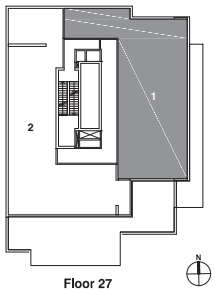
*three bedroom / 1713 sq. ft.*  
*balcony / 163 sq. ft. | balcony 99 sq. ft.*





CASA LOMA

three bedroom + den / 1889 sq. ft.  
terrace / 299 sq. ft. | balcony 345 sq. ft.



PRINCE ARTHUR

three bedroom / 2051 sq. ft.  
terrace / 713 sq. ft.

