

The
METRO

119 Merton Street
REAL ESTATE LTD. BROKERAGE

LOFTS · PENTHOUSES · TOWNES



"THE METRO"
DOWNTOWN STYLE, UPTOWN LIVING

THE DIFFERENCE OF:

- * CLASSIC ARCHITECTURE
- * UPTOWN ADDRESS
- * URBAN STYLED UPGRADED FINISHES
- * AND LOFT LIVING WITH WARRANTY BY O.N.H.W.P.

GRAND OPENING PRICES ONLY

<u>LOFT MODEL</u>	<u>APPROXIMATE SQ. FTG.</u>	<u>GRAND OPENING PRICE</u>	<u>MORTGAGE PER MTH *</u>	<u>RETAIL PRICE</u>
THE ORIOLE	570	\$119,990	\$564	\$124,990
THE CHAPLIN 1	645	\$129,990	\$611	\$134,990
THE MT. PLEASANT	700	\$139,990	\$658	\$144,990
THE MERTON	690	\$149,990	\$705	\$154,990
THE BALLIOL	805	\$169,990	\$799	\$174,990
THE ROSEHILL	945	\$191,990	\$902	\$196,990
THE MOORE PARK	984	\$195,990	\$921	\$200,990
THE BAYVIEW	935	\$209,990	\$986	\$214,990

* BASED UPON 25% DOWNPAYMENT WITH
SPECIAL FINANCING RATE OF 5.75%

DEPOSIT SCHEDULE:

\$2,000 WITH AGREEMENT
10% IN 15 DAYS (LESS \$2,000 DEPOSIT)
15% IN 180 DAYS

MAINTENANCE FEE:

\$0.33\ SQUARE FOOT

ESTIMATED TAXES

1.25% OF PURCHASE PRICE

PARKING SPACE:

\$10,000

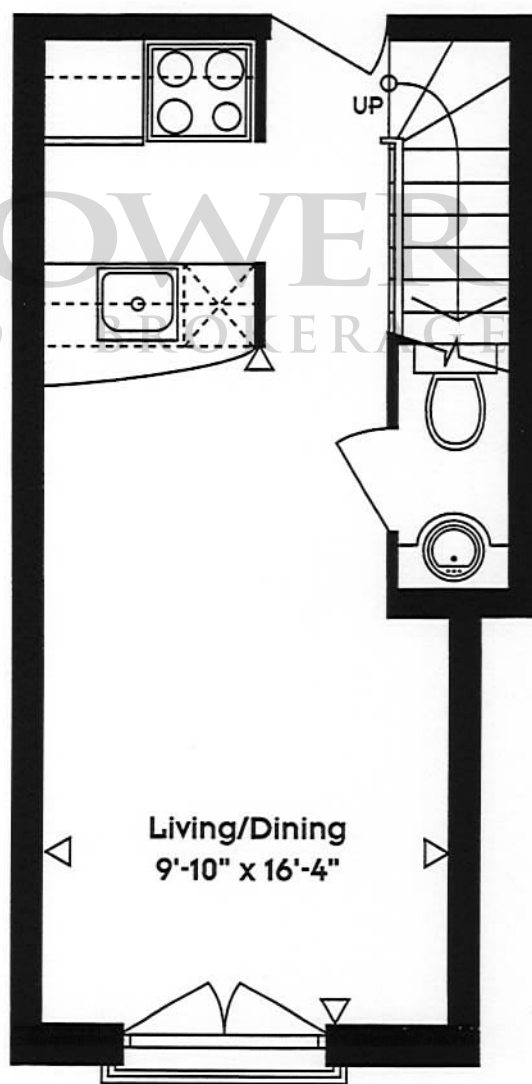
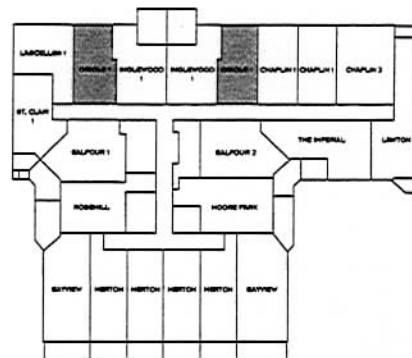
FOR FURTHER INFORMATION CALL:
(416) 324-8794

- * JEAN SHACKET
- * VALERIE HAMILTON

Prices & specifications subject to change without notice.
E. & O.E. dated September 26, 1997

URBANCORP

1 BEDROOM LOFT - 570 - SQ. FT.
2ND FLOOR



(LOWER)

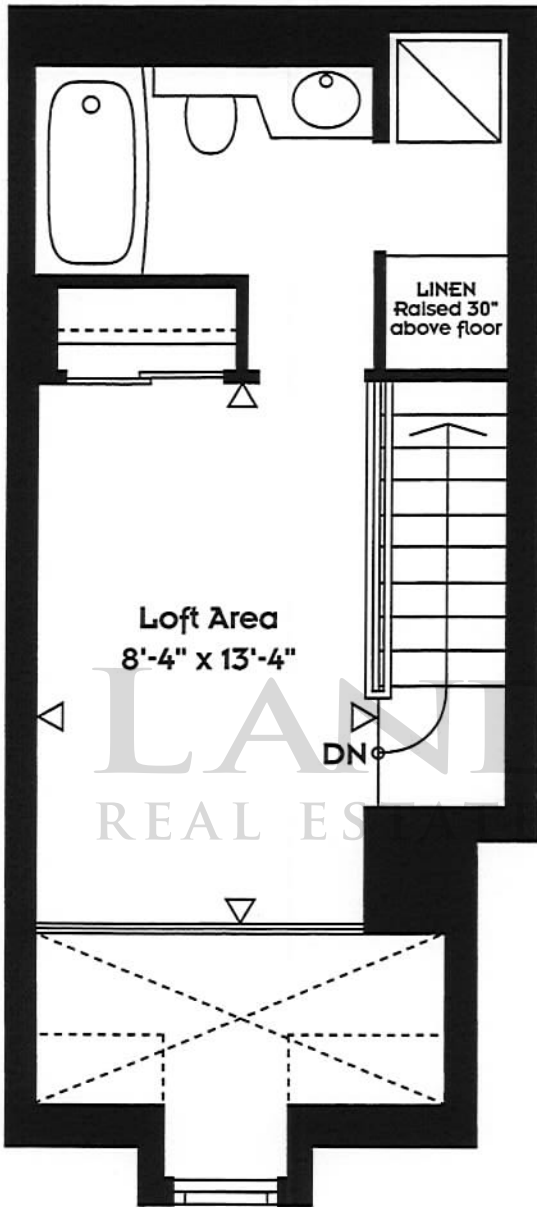
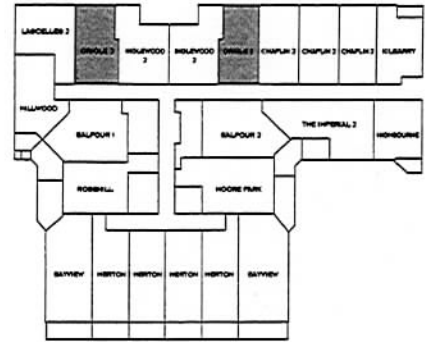
Notes:

[illegible]

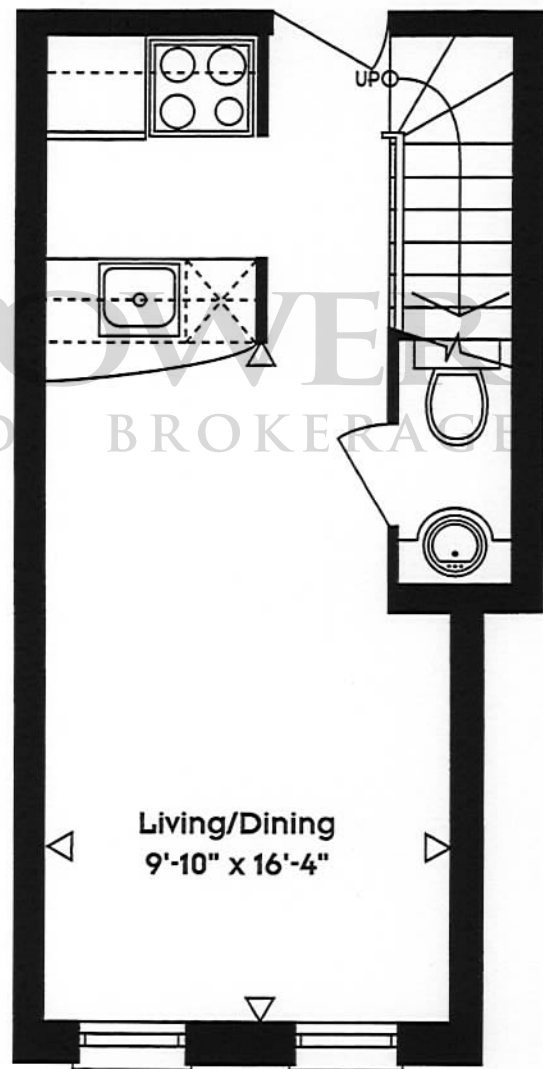
All dimensions are approximate. Sizes and specifications are subject to change without notice.
E.O.E. Actual usable floorspace may vary from stated floor area. 25/9/97.

The Oriole 2

1 BEDROOM LOFT - 570 - SQ. FT.
4TH FLOOR



(UPPER)



(LOWER)

Notes:

.....

.....

.....

.....

.....

.....

.....

.....

.....

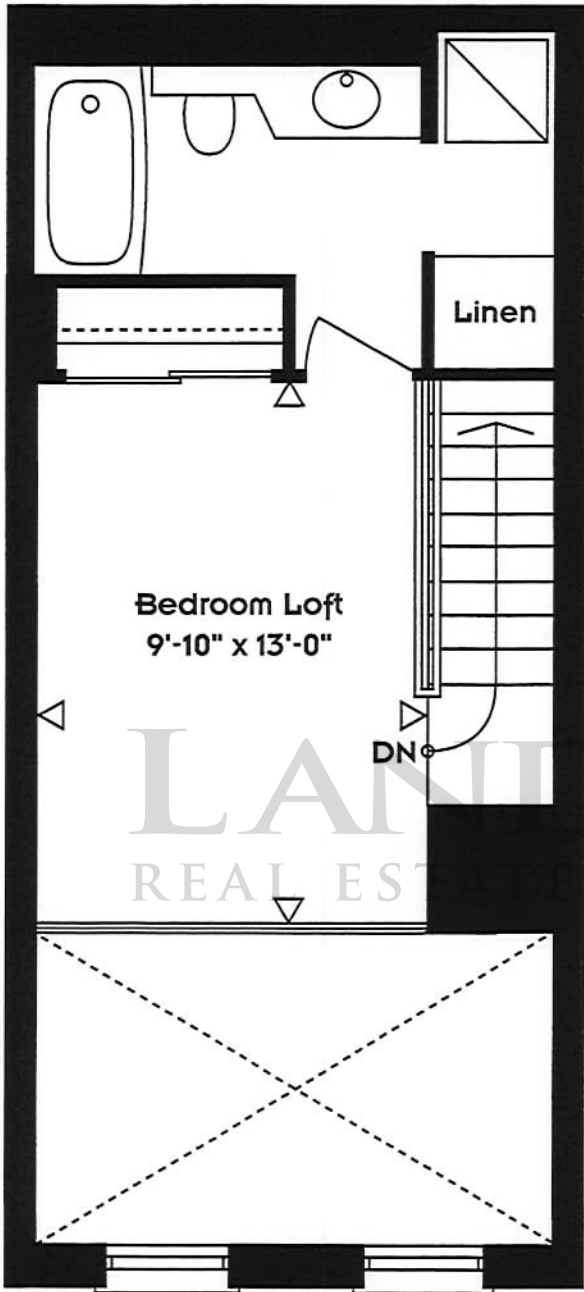
.....



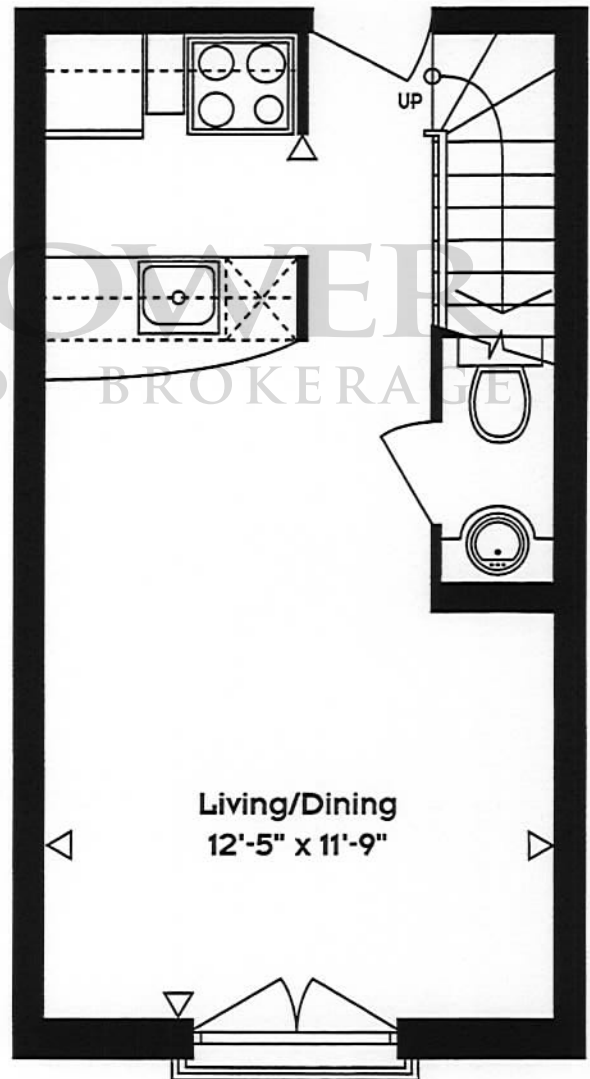
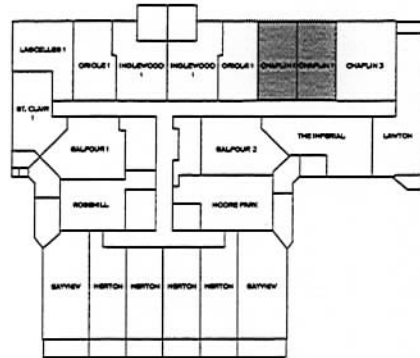
All dimensions are approximate. Sizes and specifications are subject to change without notice.
E.O.E. Actual usable floorspace may vary from stated floor area. 25/9/97.

The Chaplin 1

1 BEDROOM LOFT - 645 - SQ. FT.
2ND FLOOR



(UPPER)



(LOWER)

Notes:

.....

.....

.....

.....

.....

.....

.....

.....

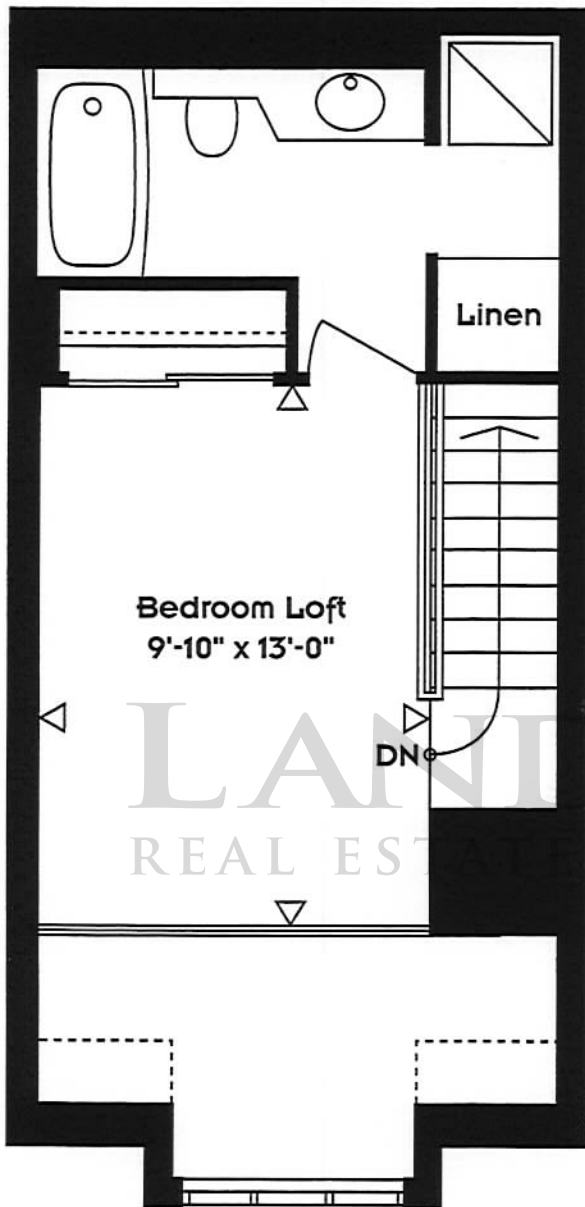
.....

.....

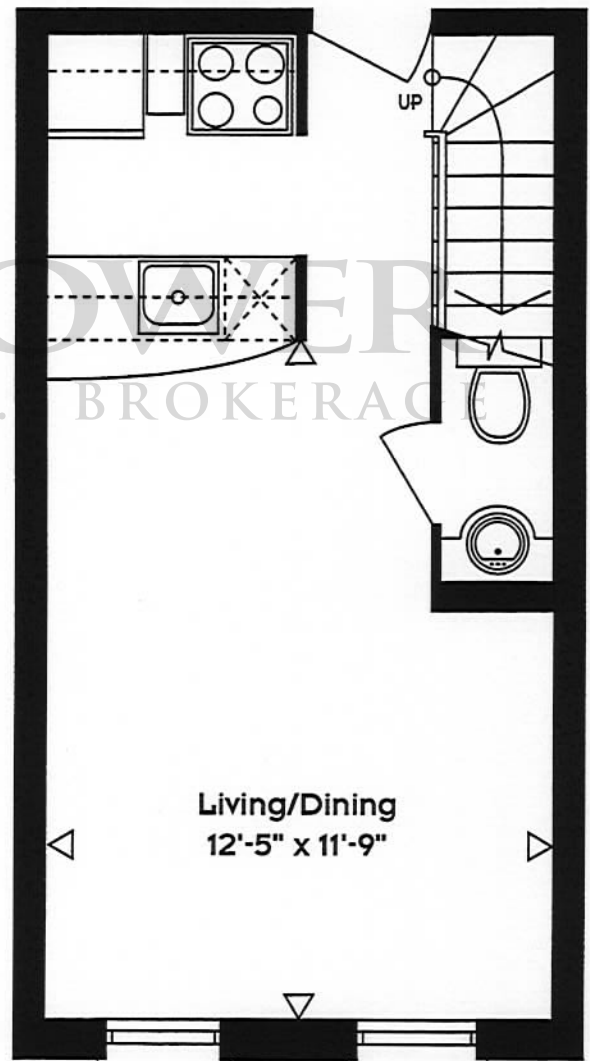
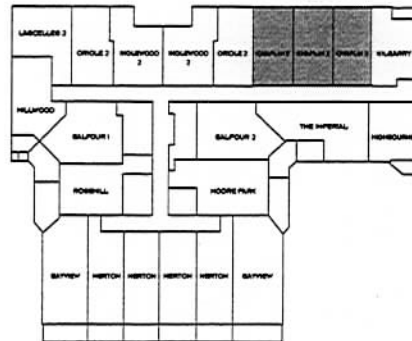


The Chaplin 2

1 BEDROOM LOFT - 645 - SQ. FT.
4TH FLOOR



(UPPER)



(LOWER)

Notes:

.....

.....

.....

.....

.....

.....

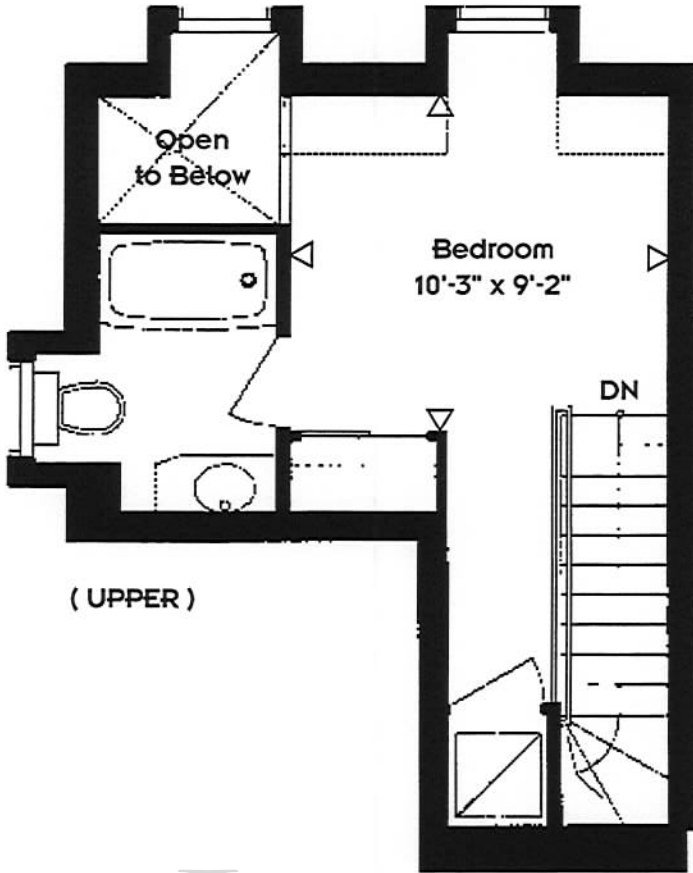
.....



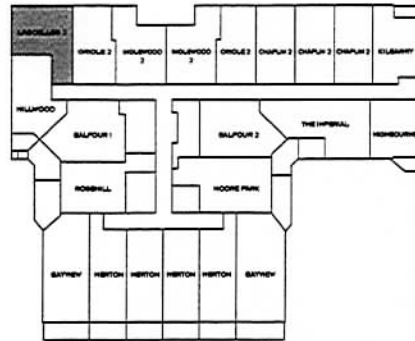
All dimensions are approximate. Sizes and specifications are subject to change without notice.
E.S.O.E. Actual usable floorspace may vary from stated floor area. 25/9/97.

The Lascelles 2

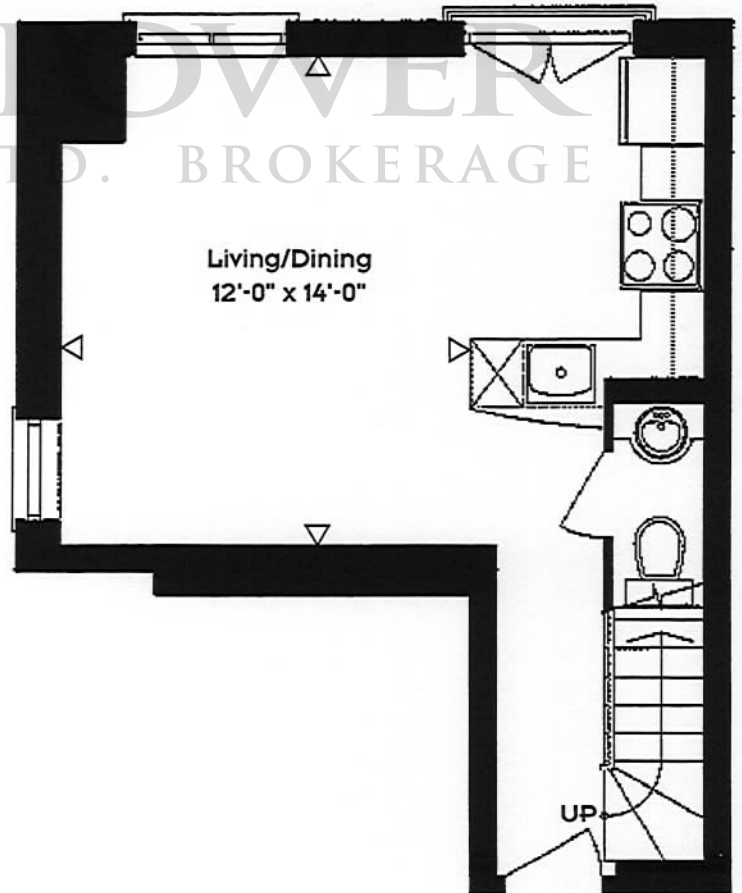
1 BEDROOM LOFT - 660 - SQ. FT.
4TH FLOOR



(UPPER)



LANDOVER
REAL ESTATE LTD. BROKERAGE



(LOWER)

Notes:

.....

.....

.....

.....

.....

.....

.....

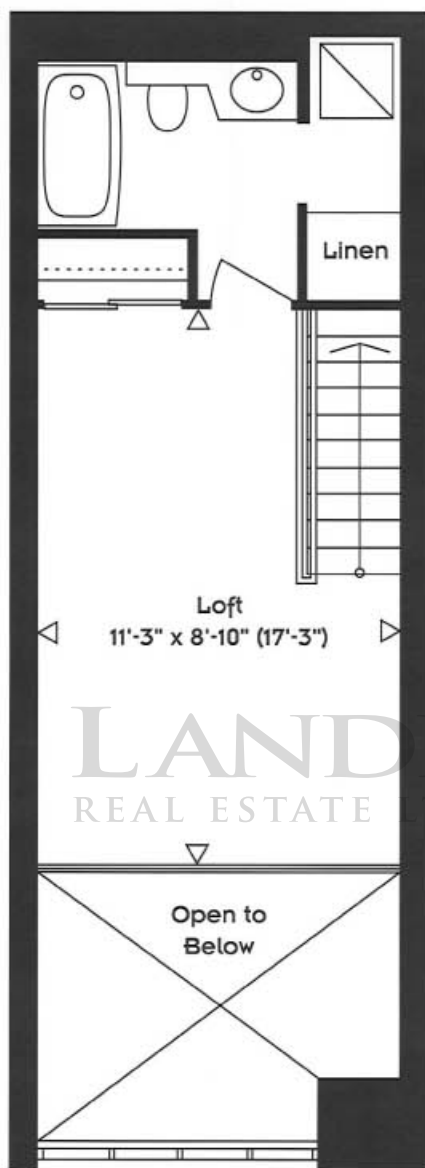
.....



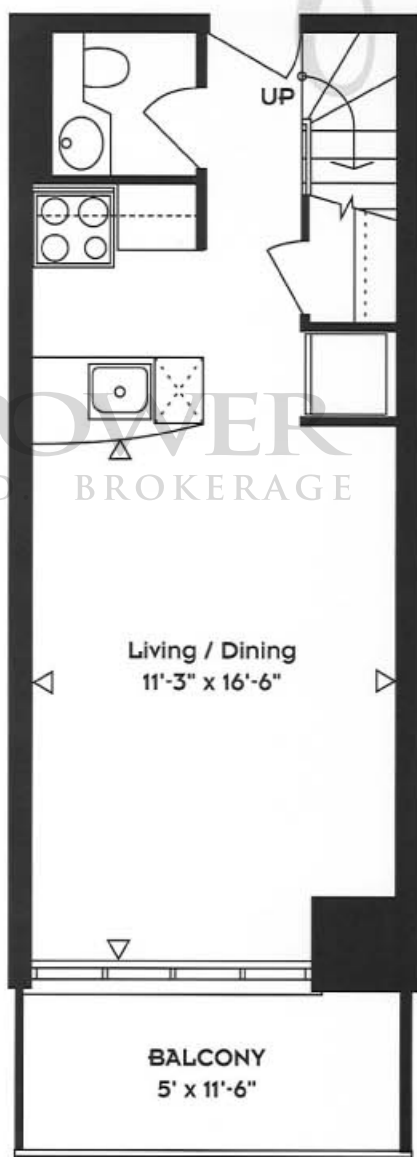
The Merton

1 BEDROOM LOFT - 690 SQ. FT.

FLOORS 2, 4, 6, 8 & 10

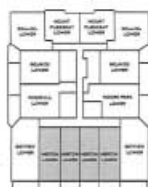


(UPPER)



(LOWER)

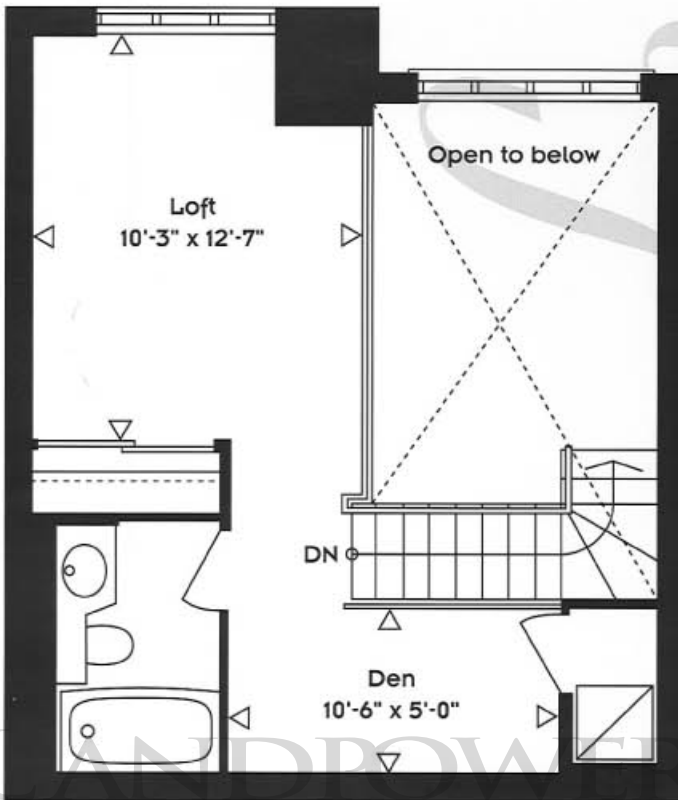
Notes:



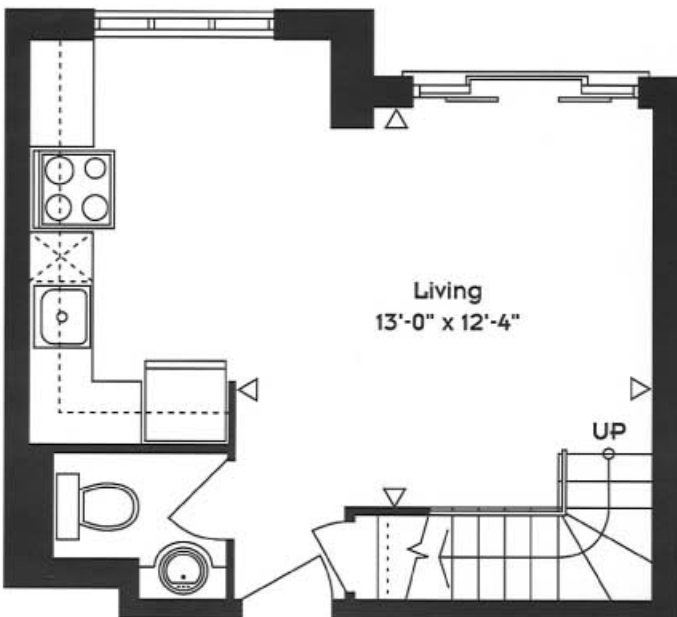
The Mount Pleasant

1 BEDROOM & DEN LOFT - 700 SQ. FT.

FLOORS 6, 8 & 10



(UPPER)



(LOWER)

Notes:

.....

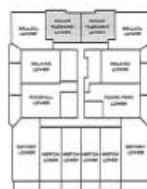
.....

.....

.....

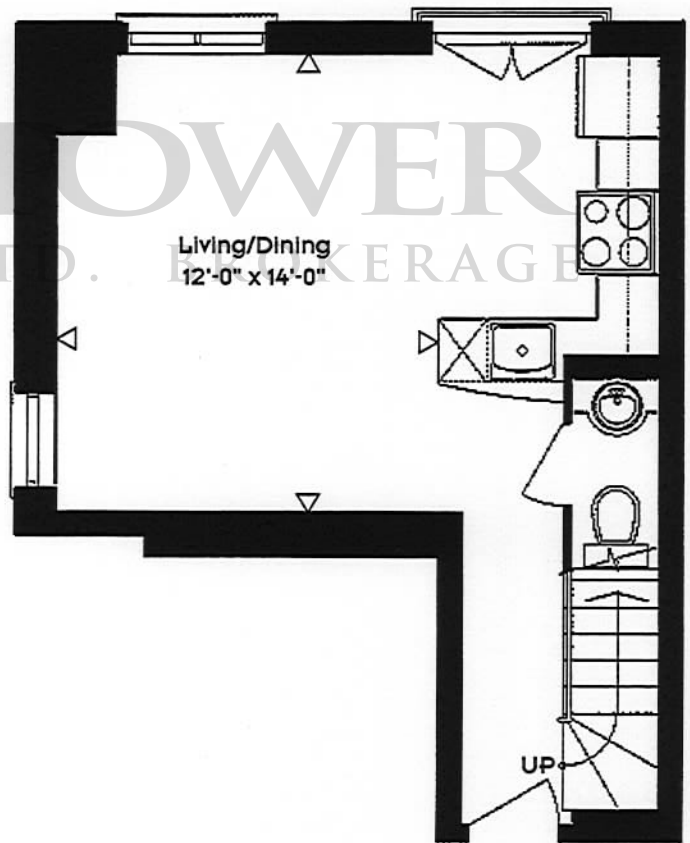
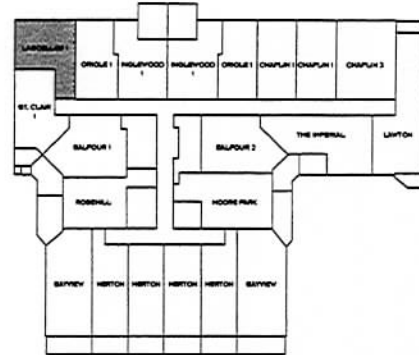
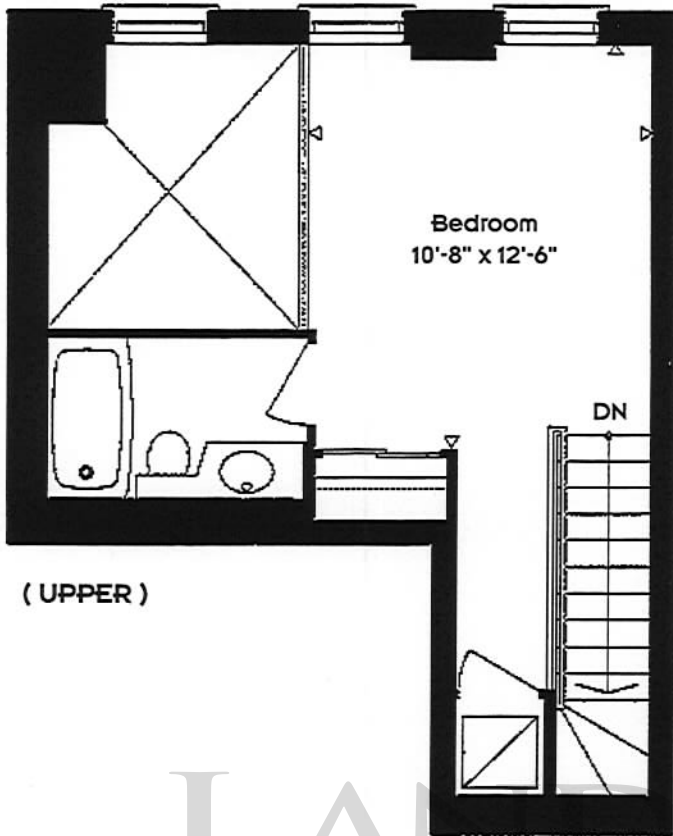
.....

.....



The Lascelles 1

1 BEDROOM LOFT - 720 - SQ. FT.
2ND FLOOR



LANDFLOWER
REAL ESTATE LTD. BROKERAGE

Notes:

.....

.....

.....

.....

.....

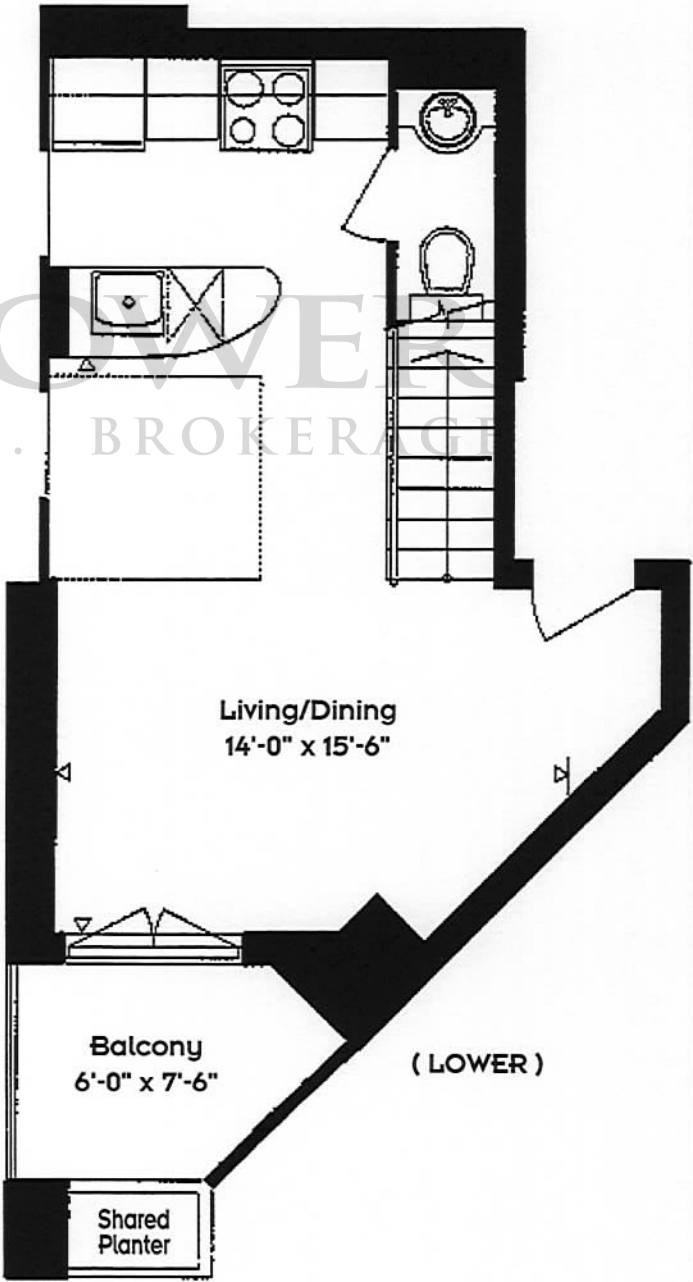
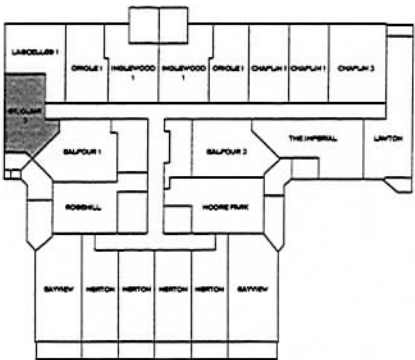
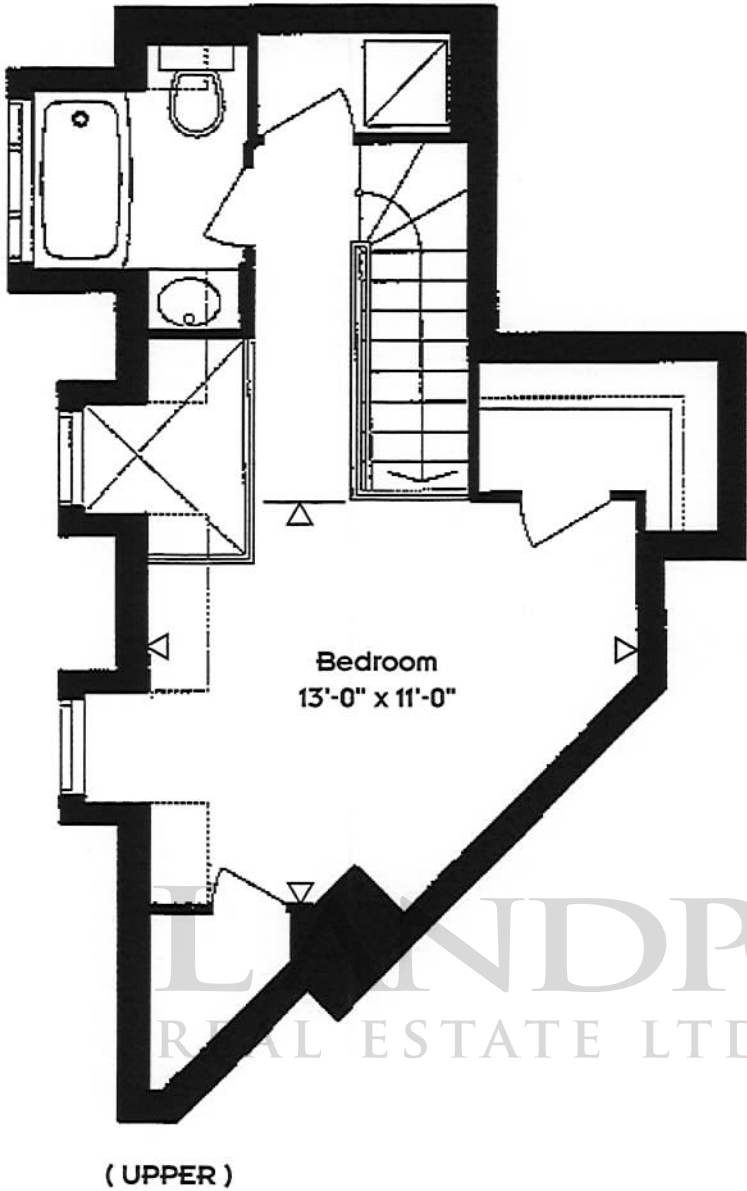
.....

.....



The St. Clair 2

1 BEDROOM LOFT - 720 - SQ. FT.
4TH FLOOR



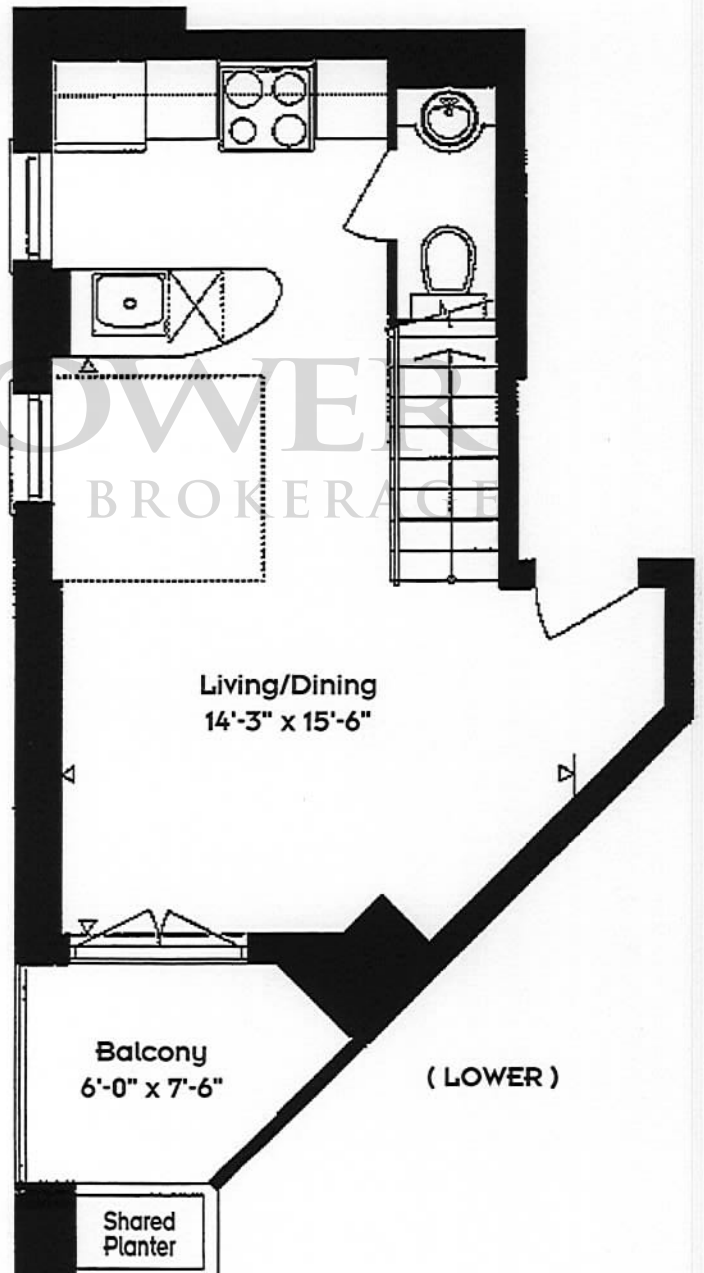
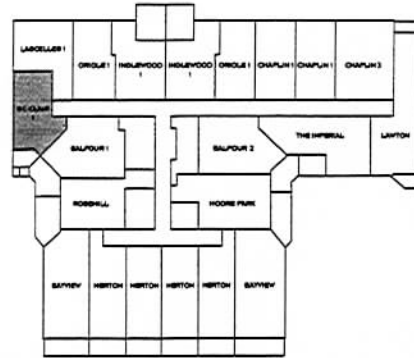
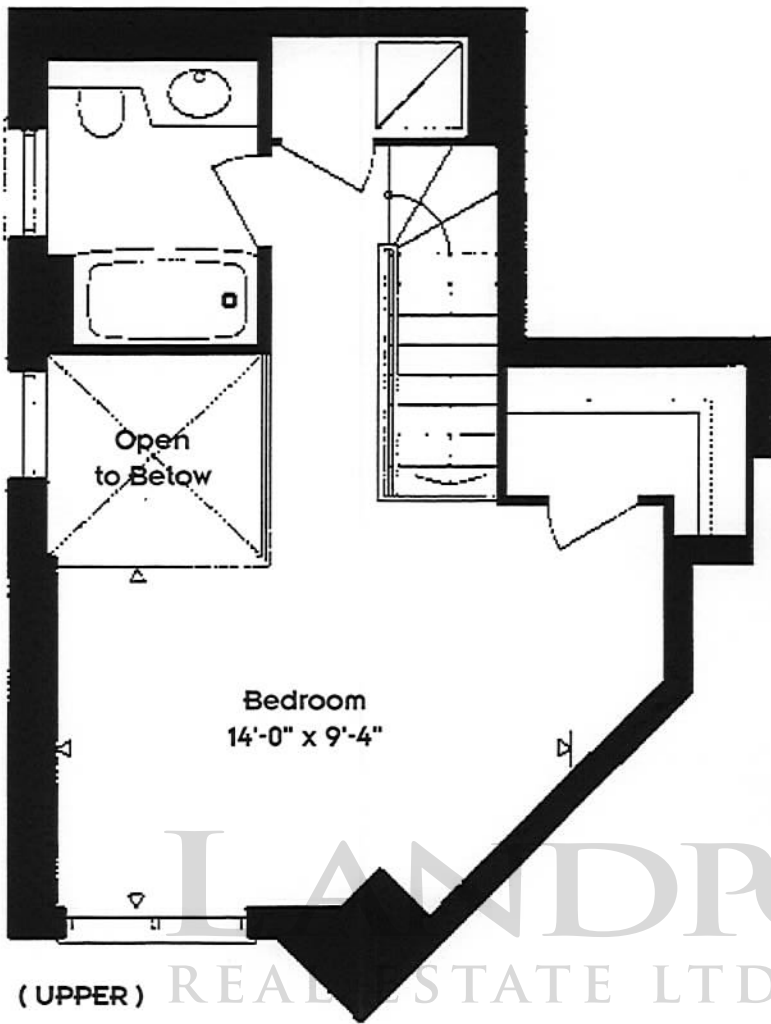
Notes:

.....
.....
.....
.....
.....
.....
.....
.....



The St. Clair 1

1 BEDROOM LOFT - 750 - SQ. FT.
2ND FLOOR



Notes:

.....

.....

.....

.....

.....

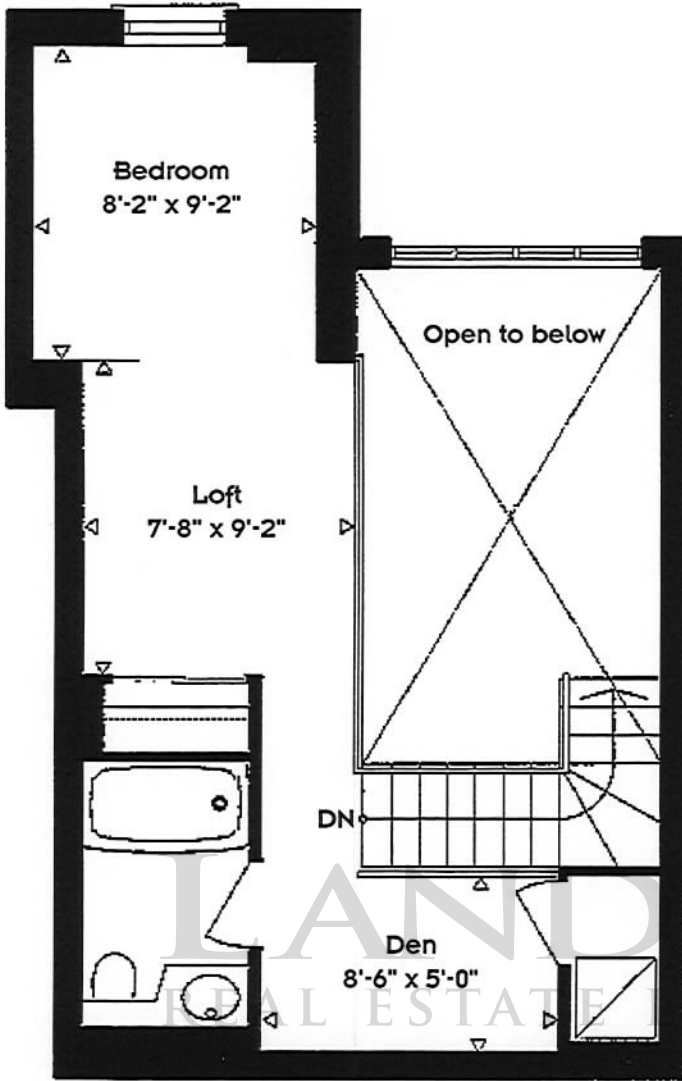
.....

.....

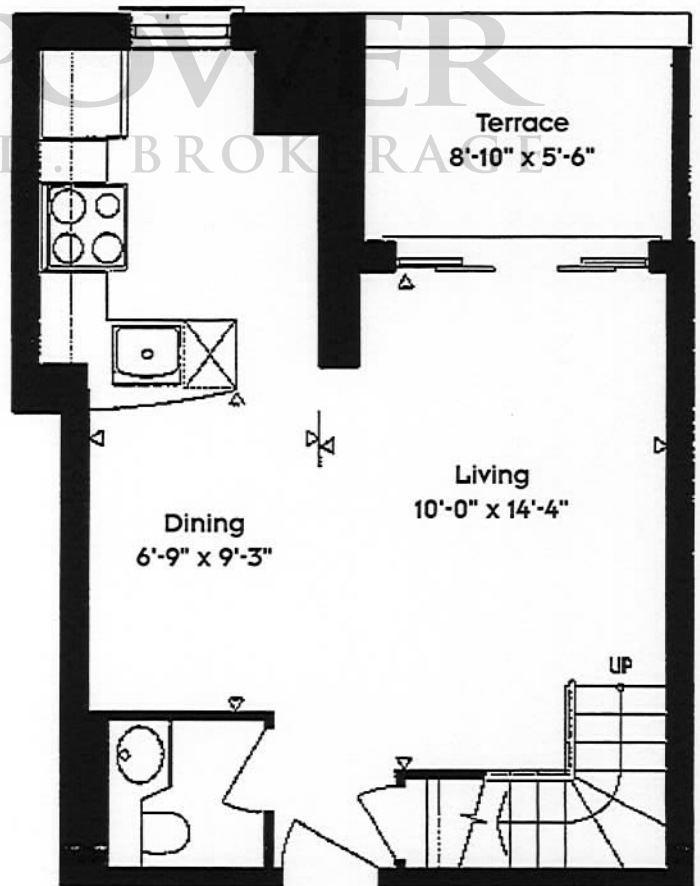
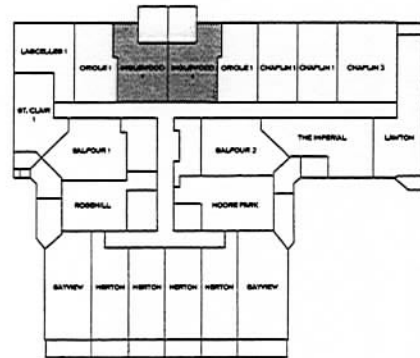


The Inglewood 1

1 BEDROOM LOFT - 775 - SQ. FT.
2ND FLOOR



(UPPER)



(LOWER)

Notes:

.....

.....

.....

.....

.....

.....

.....

.....

.....

.....

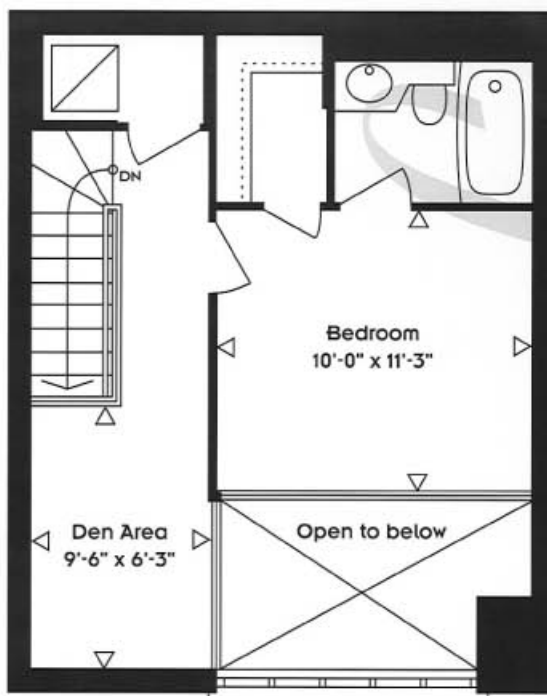


The Belsize

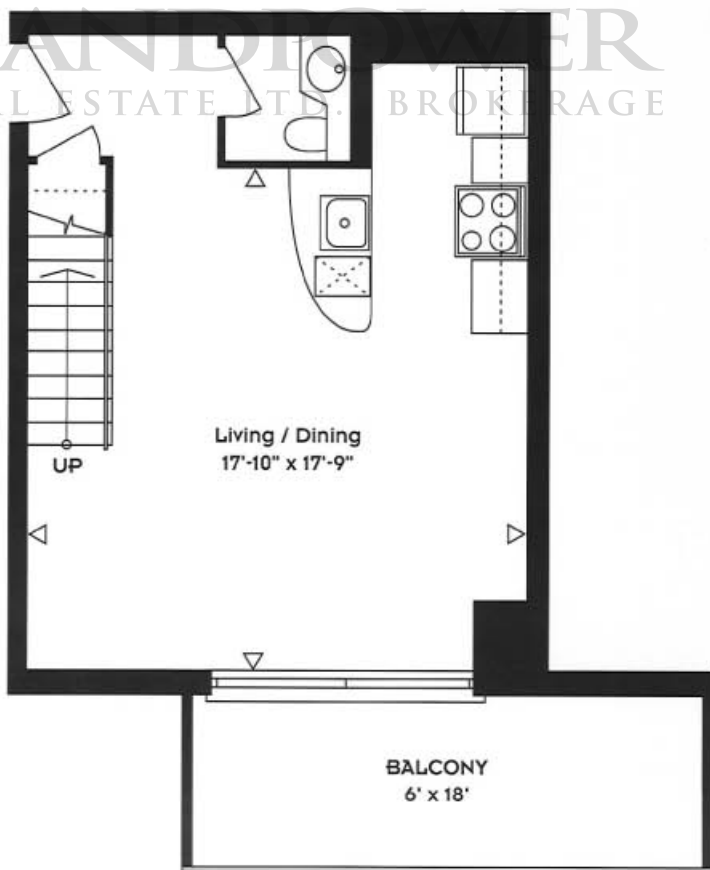
1 BEDROOM & DEN LOFT - 790 SQ. FT.

FLOORS 6, 8 & 10

(UPPER)



(LOWER)



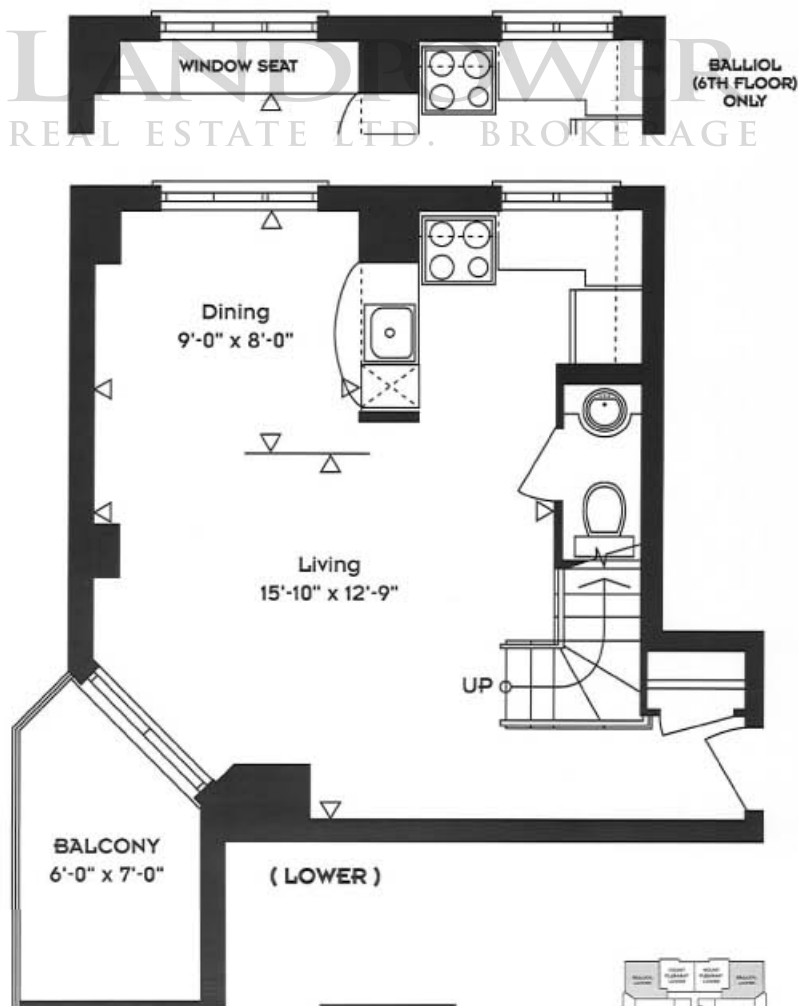
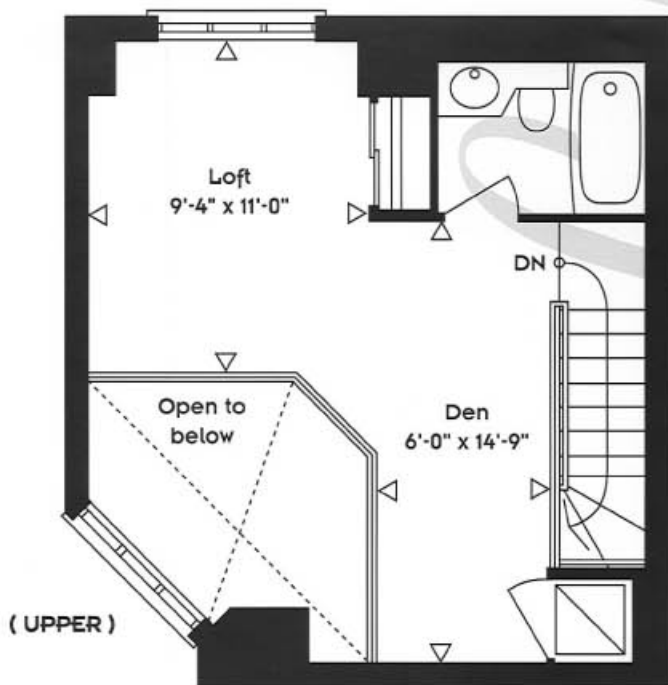
Notes



The Balliol

1 BEDROOM & DEN LOFT - 805 SQ. FT.

FLOORS 8 & 10, ALTERNATE 6 FLOOR ONLY



Notes

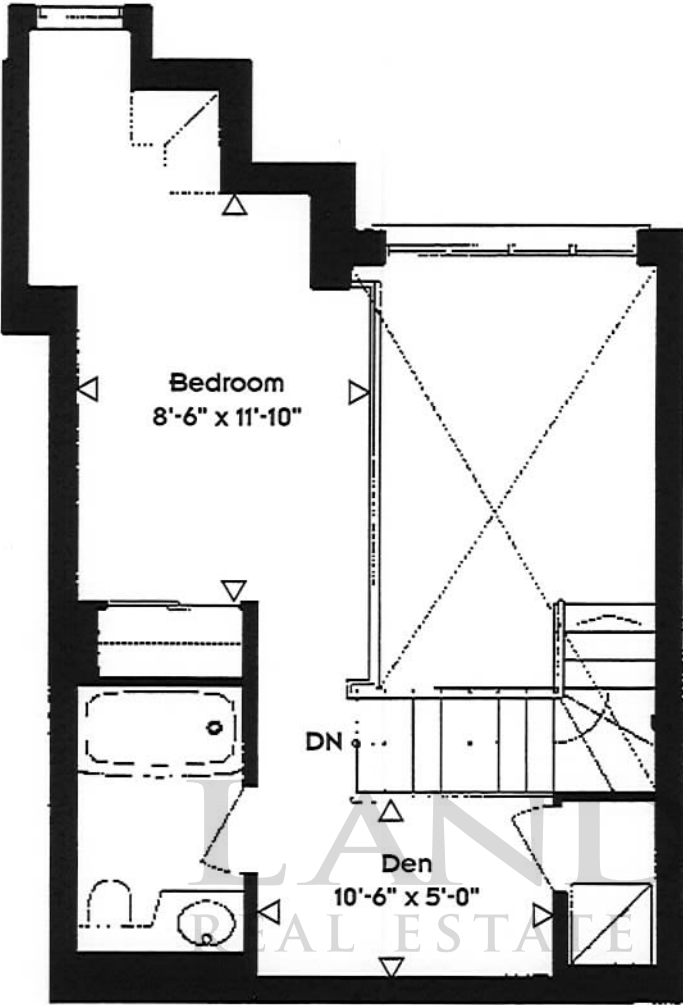
The
METRO

110 Madison Street

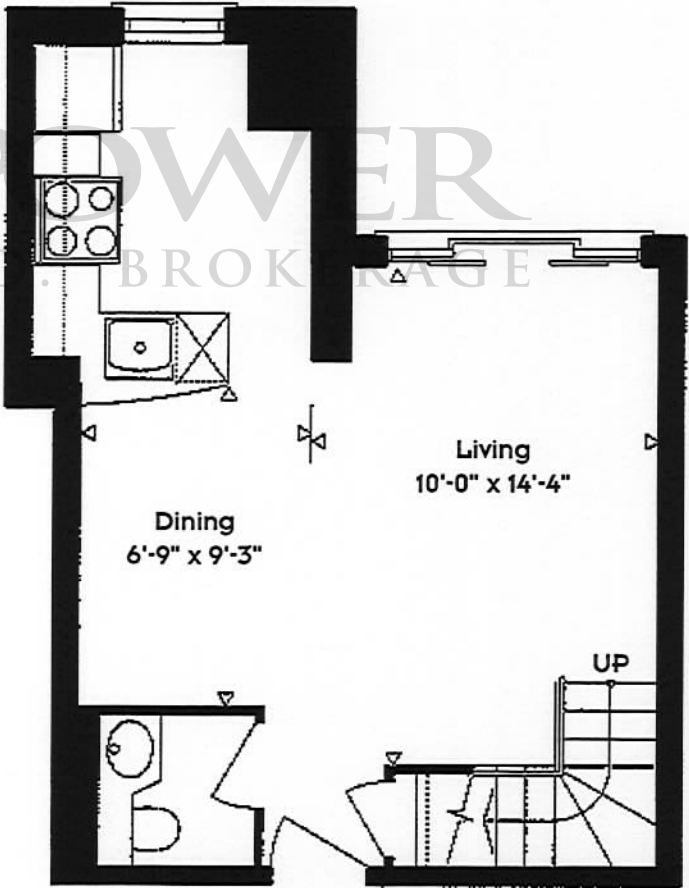
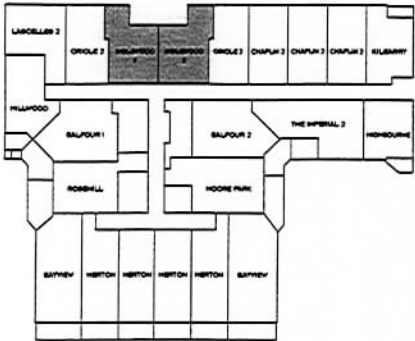


The Inglewood 2

1 BEDROOM LOFT - 775 - SQ. FT.
4TH FLOOR



(UPPER)



(LOWER)

Notes:

.....

.....

.....

.....

.....

.....

.....

.....

.....

.....

The

METRO

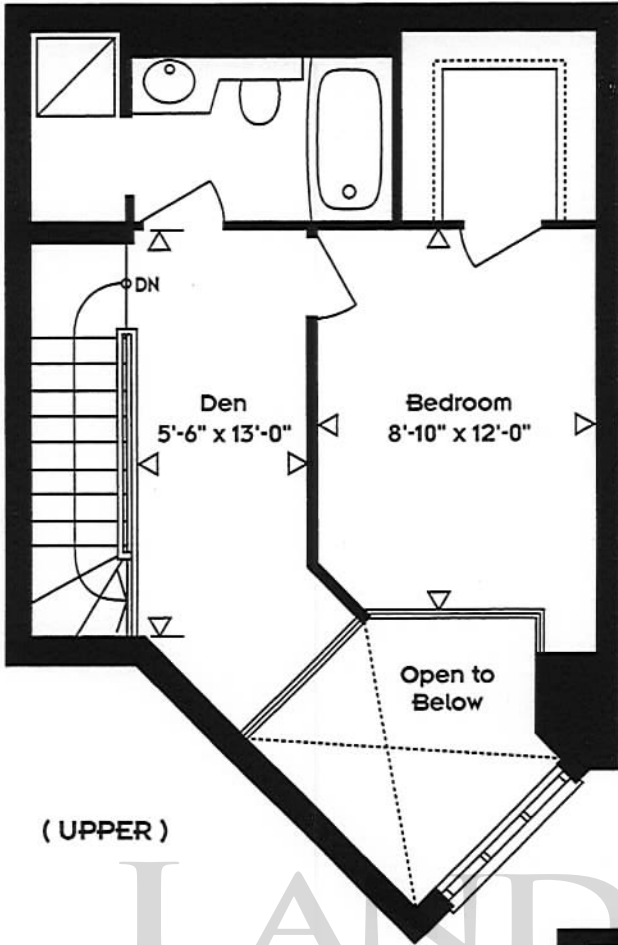
119 Madison Street

All dimensions are approximate. Sizes and specifications are subject to change without notice.
E.60.E. Actual usable floorspace may vary from stated floor area. 25/9/97.

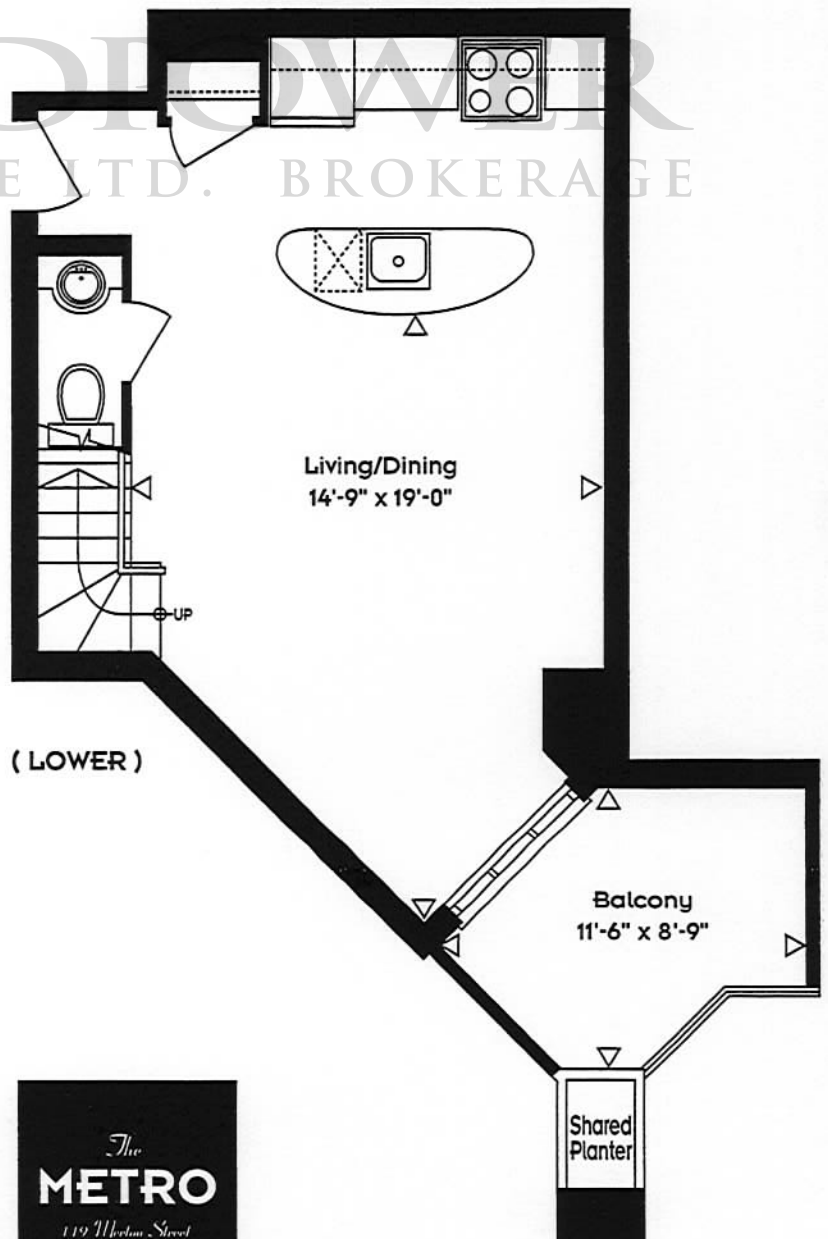
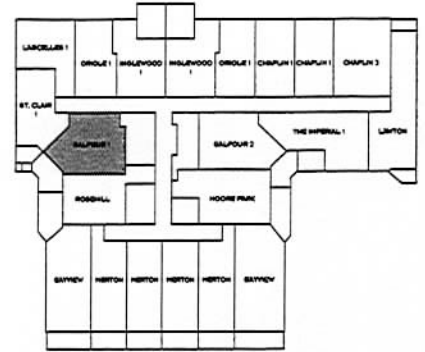
The Balfour 1

1 BEDROOM & DEN LOFT - 840 - SQ. FT.

FLOORS 2 & 4



(UPPER)



(LOWER)

Notes:

.....

.....

.....

.....

.....

.....

.....

.....

.....

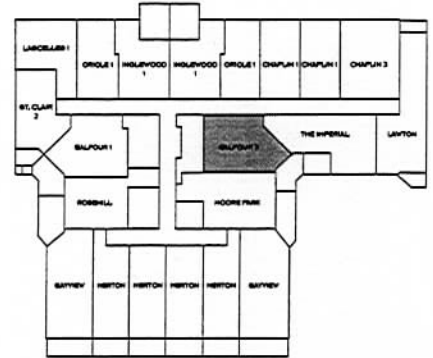
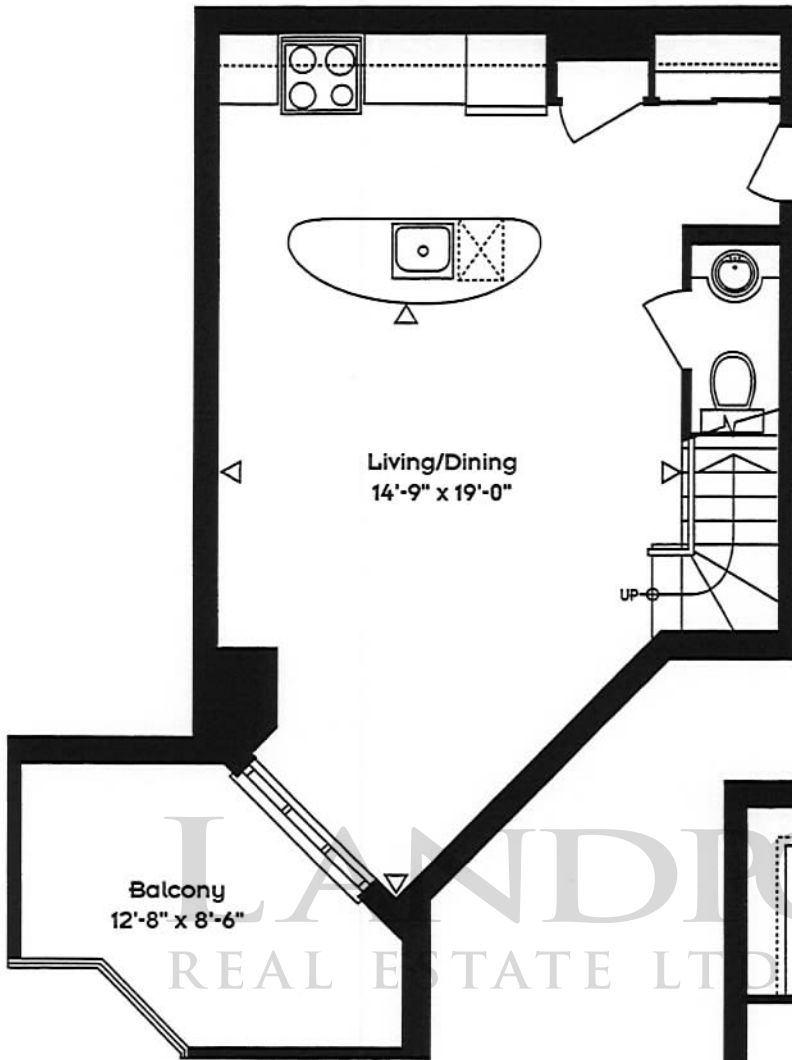
.....

The
METRO
119 Weston Street

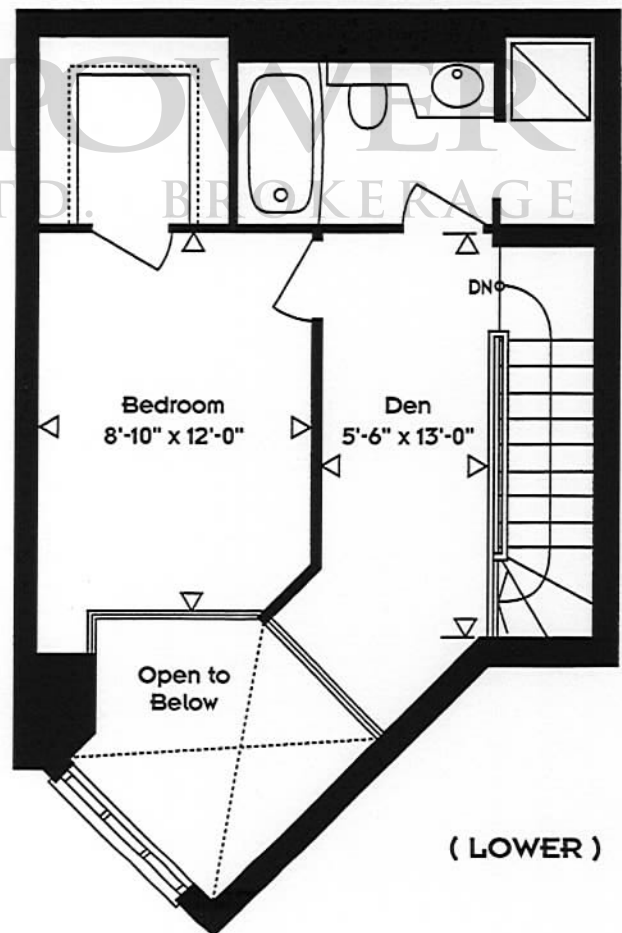
The Balfour 2

1 BEDROOM & DEN LOFT - 840 - SQ. FT.

FLOORS 2 & 4



(UPPER)



(LOWER)

Notes:

.....

.....

.....

.....

.....

.....

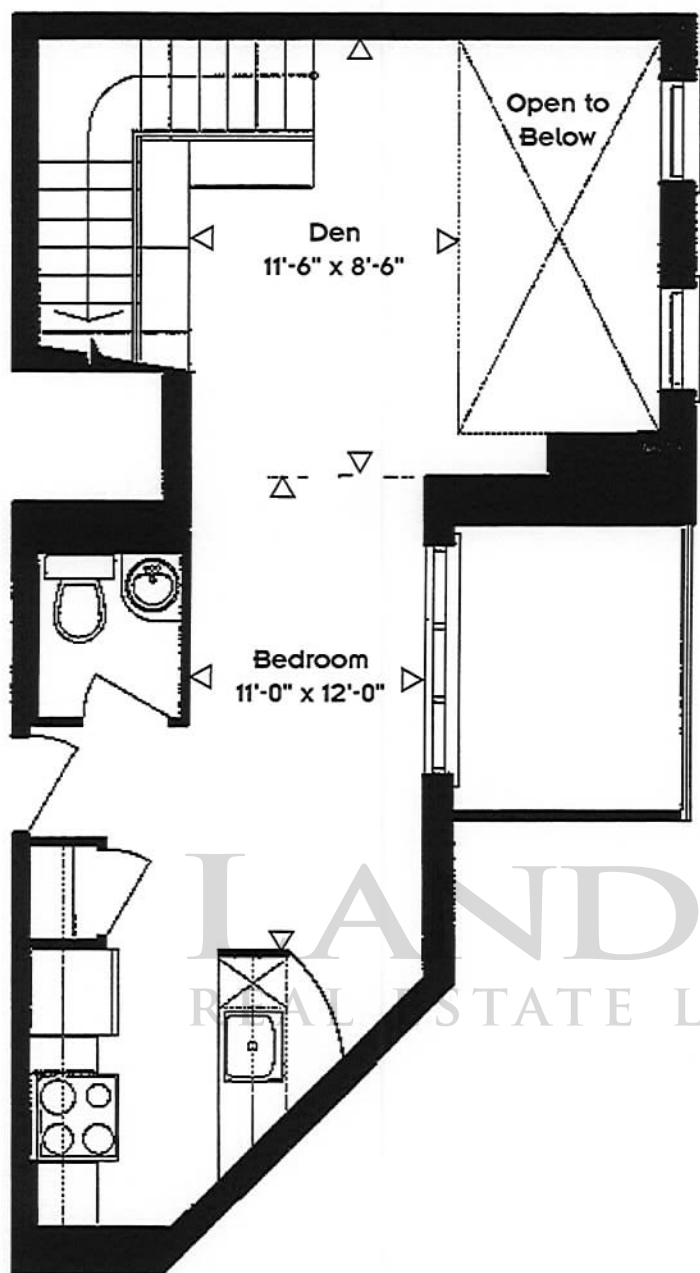
.....

.....

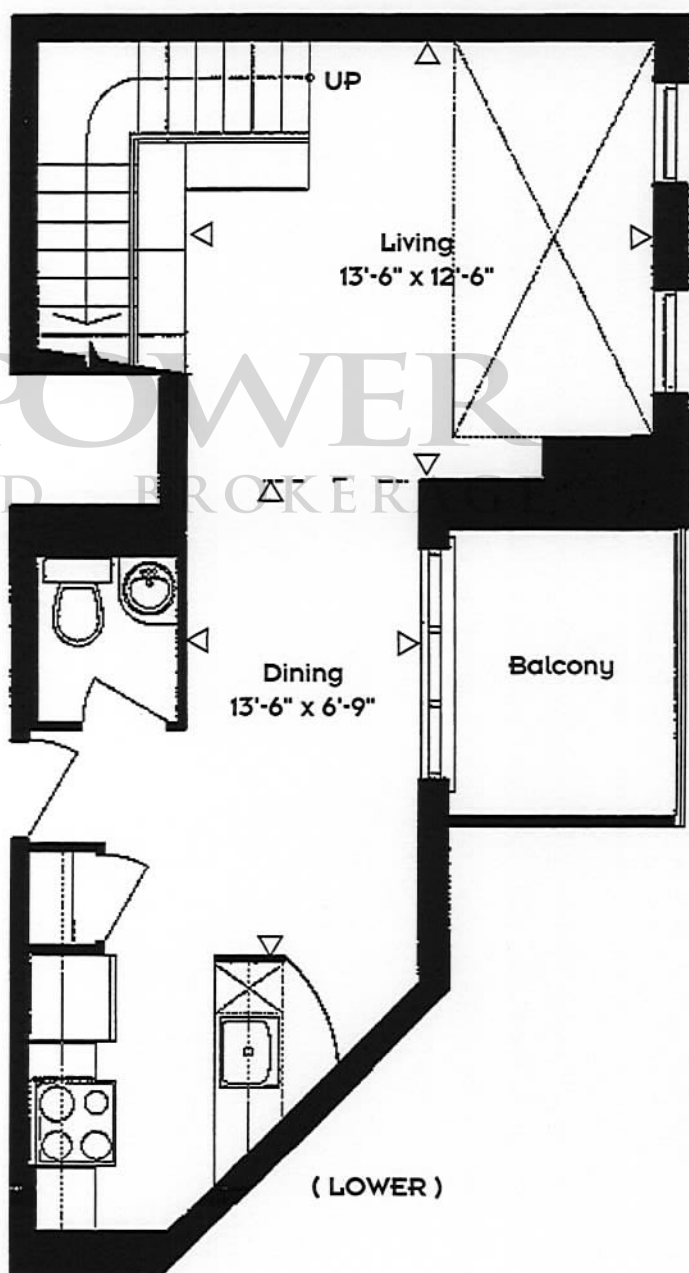
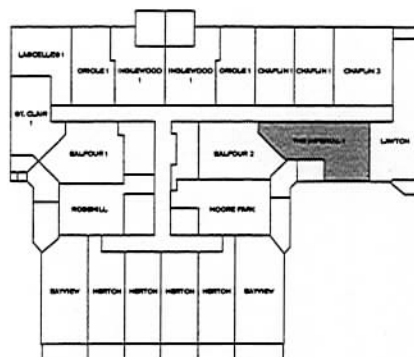


The Imperial 1

1 BEDROOM & DEN LOFT - 900 - SQ. FT.
2ND FLOOR



(UPPER)



(LOWER)

Notes:

.....

.....

.....

.....

.....

.....

.....

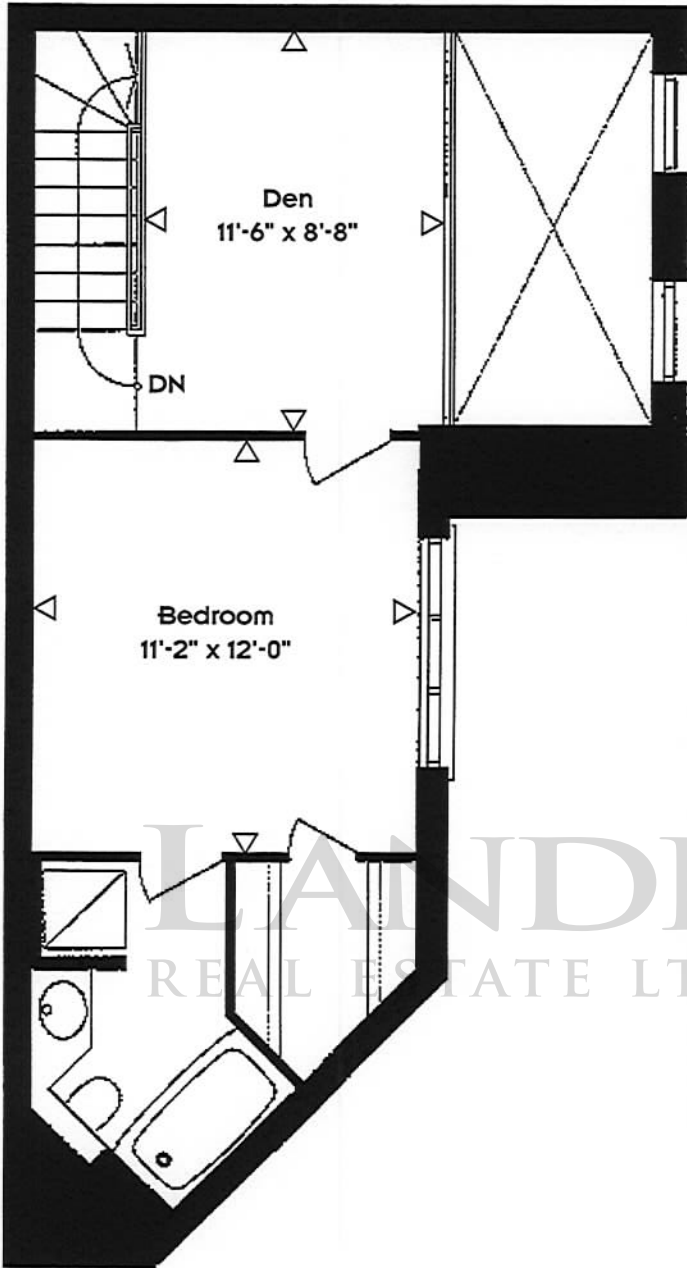
.....

The
METRO

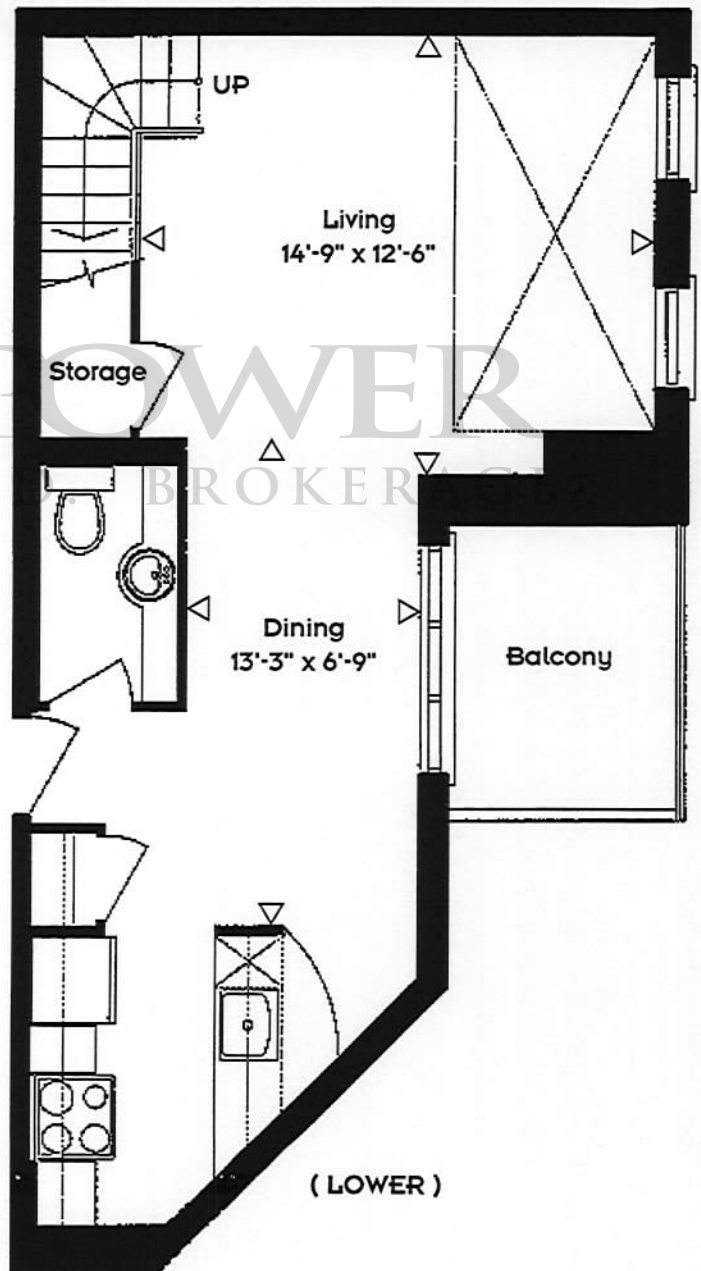
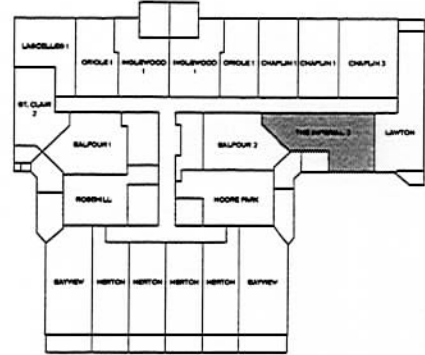
119 Market Street

The Imperial 2

1 BEDROOM & DEN LOFT - 900 - SQ. FT.
4TH FLOOR



(UPPER)



(LOWER)

Notes:

.....

.....

.....

.....

.....

.....

.....

.....

.....

.....

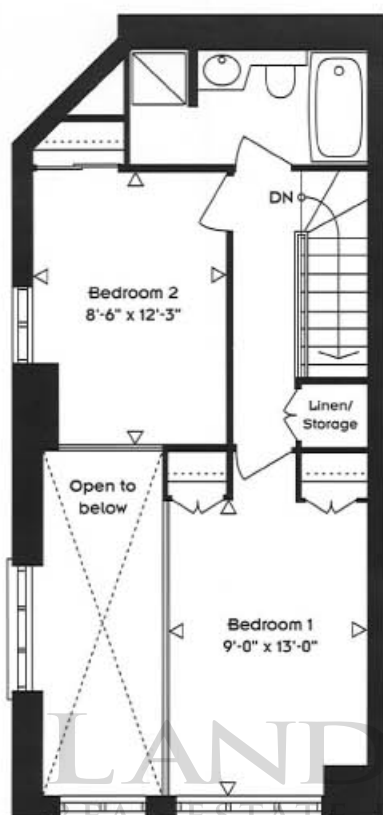


All dimensions are approximate. Sizes and specifications are subject to change without notice.
E.O.E. Actual usable floorspace may vary from stated floor area. 25/9/97.

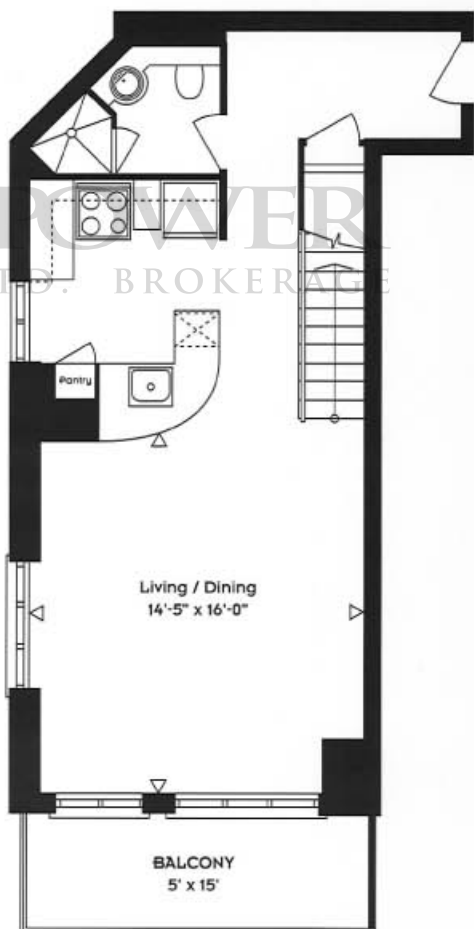
The Bayview

2 BEDROOM LOFT - 935 SQ. FT.

FLOORS 2,4,6,8 & 10



(UPPER)



(LOWER)

Notes:

.....

.....

.....

.....

.....

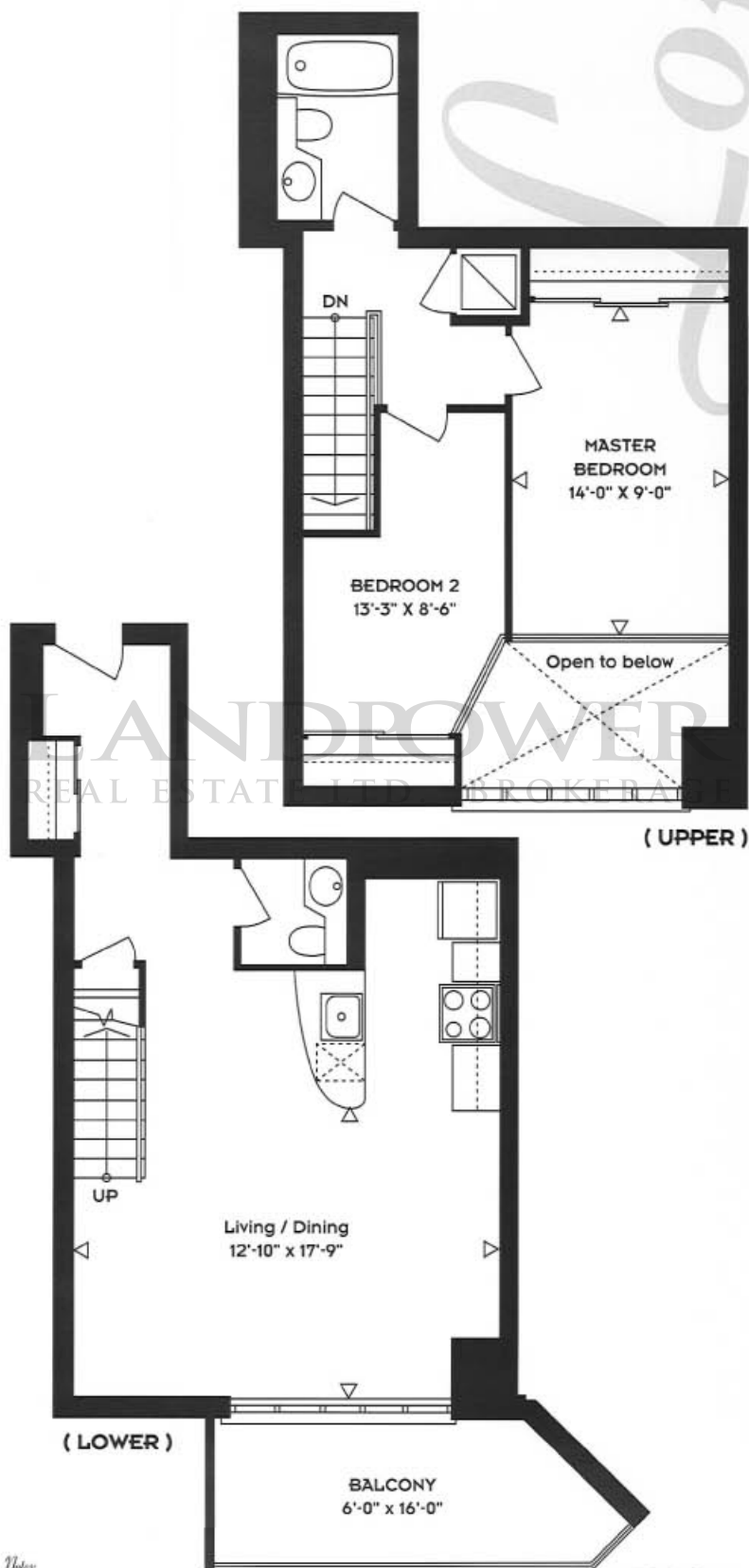
.....



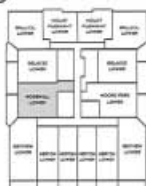
The Rosehill

2 BEDROOM LOFT - 945 SQ. FT.

FLOORS 2, 4, 6, 8 & 10



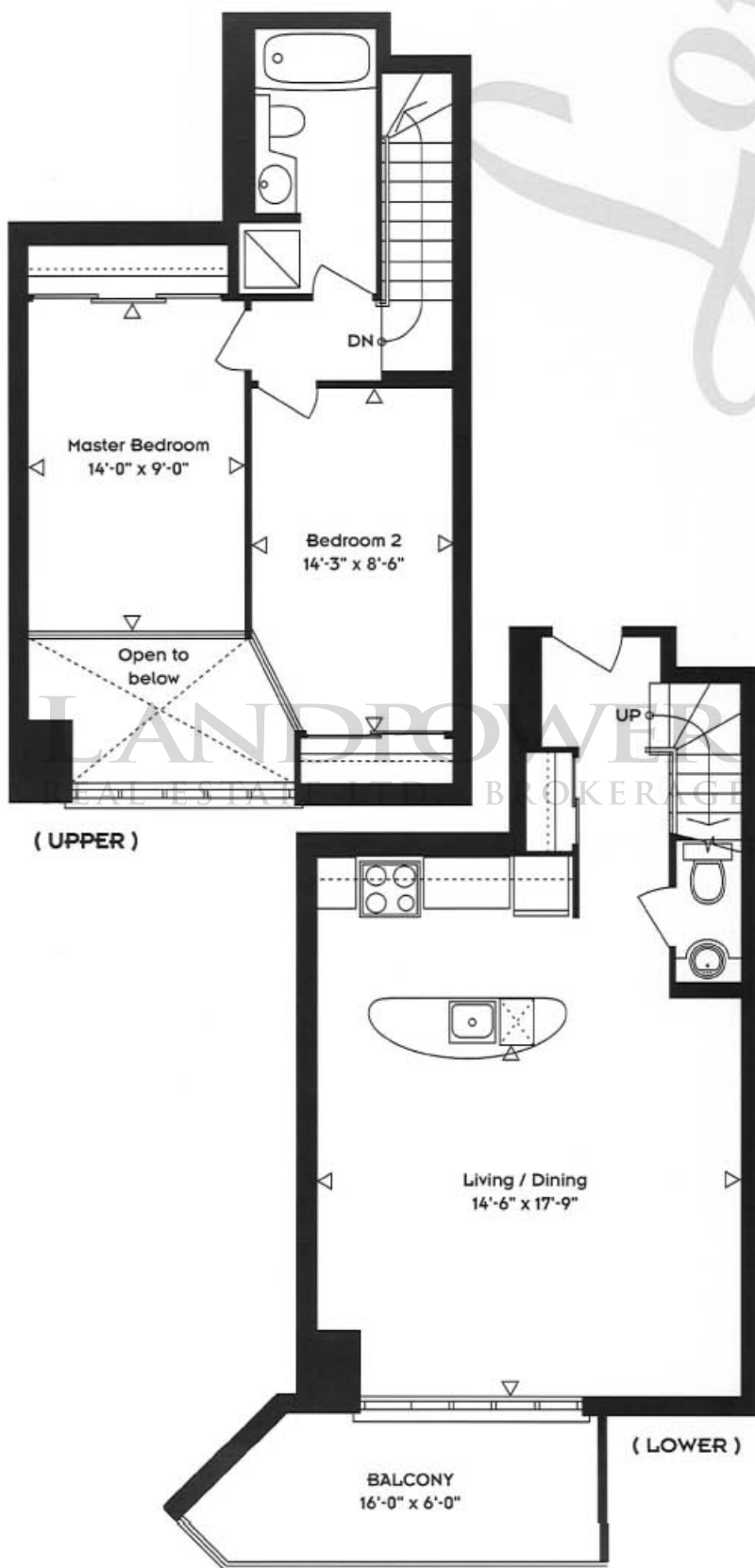
Notes



The Moore Park

2 BEDROOM LOFT - 984 -SQ. FT.

FLOORS 2, 4, 6, 8 & 10



Notes:





URBANCORP *Urban Style*

URBANCORP takes great pride in presenting the distinctive condominium residences of The Metro. The Metro embodies our guiding principle: select the best sites, offer innovative lifestyle designs and provide luxurious affordability to homebuyers.

Our goal is to create unique urban residences that embody the spirit of their neighbourhood and provide homeowners with pride and long-term satisfaction.

The principals, planners and architects of URBANCORP have a combined experience of over 50 years building residential projects in Toronto. Our expertise at urban site selection and modern design is evident in all our residential projects. In Toronto's historical Annex neighbourhood, our Sloane Square collection of 54 townhomes and city lofts was an immediate success. In fact, it was nominated for "Best Urban Design" Award by the City Of Toronto. Also in the Annex - The Lennox Mews, a sophisticated collection of 59 homes, integrated the architectural elegance of turn-of-the-century mansions with today's most innovative lifestyle condominiums.

123 Eglinton Avenue, represents the best of uptown living. Condominium townhomes and suites designed in a quiet courtyard setting with all the amenities and excitement of the Yonge/ Eglinton entertainment and restaurant hub. 5 Rosehill is a mid-rise, 93 suite, luxury condominium with a prestigious Yonge & St. Clair address. Designed with a private courtyard and terrace penthouses, 5 Rosehill is a perfect example of sophisticated city style.

The Metro, the latest URBANCORP community is designed for stylish uptown living.

URBANCORP