



LANDPOWER  
REAL ESTATE LTD. BROKERAGE

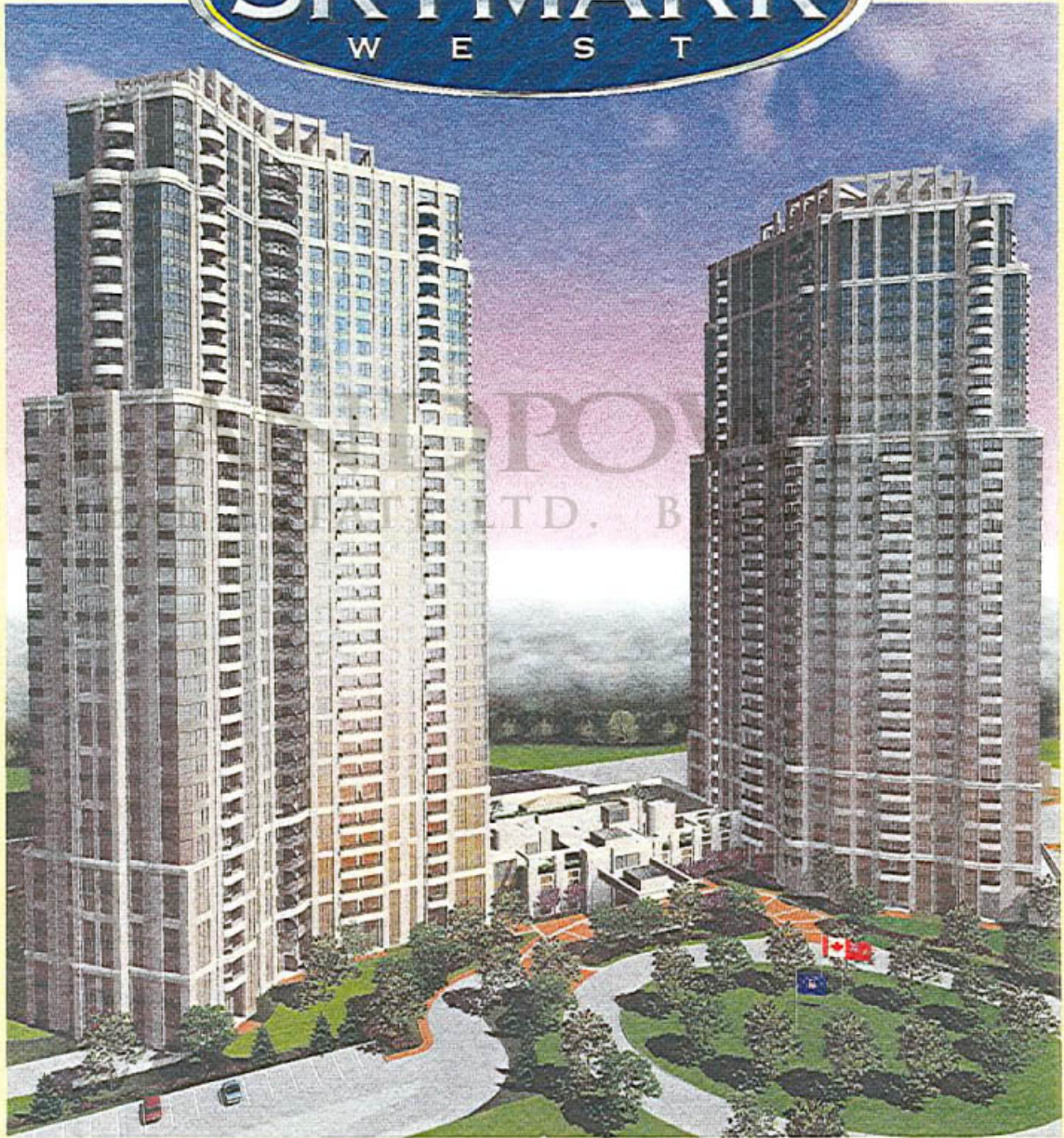
A CONDOMINIUM RESIDENCE  
OF SOARING SOPHISTICATION

---

A JOINT VENTURE  
**TRIDEL** HULLMARK

UP WHERE YOU BELONG

  
**SKYMARK**  
W E S T

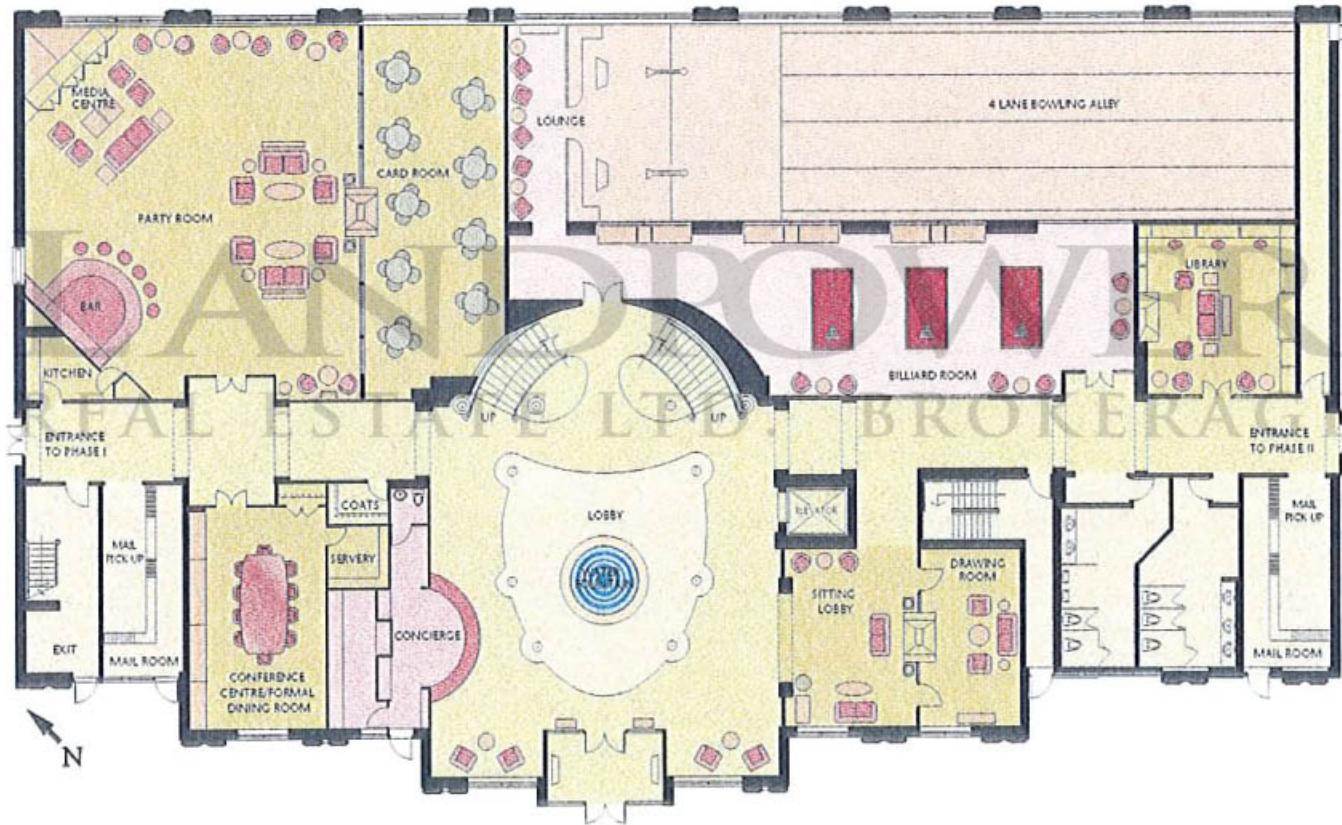


---

A JOINT VENTURE  
**TRIDEL HULLMARK**

# THE SKYMARK CLUB GROUND LEVEL

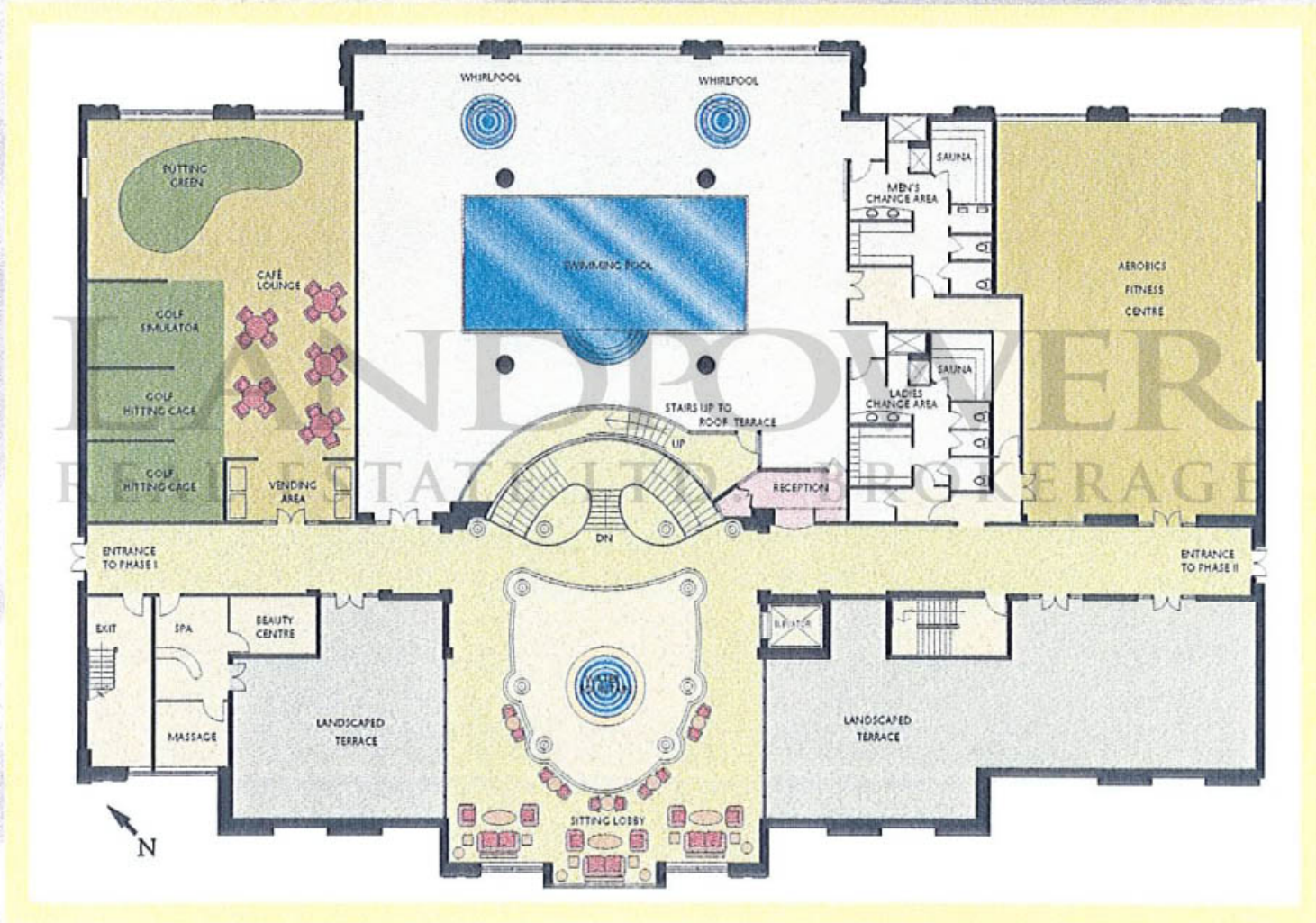
The heart and soul of this residence is the spectacular Skymark Club. A splendid multi-faceted leisure, fitness and social centre that rivals the city's foremost private clubs.



# THE SKYMARK CLUB

## LEVEL TWO

Two full stories are dedicated to the height of socializing, leisure and fitness.



# SKYMARK WEST

## SUITE SIZES AND PRICES

The homes at Skymark West are the embodiment of a very special, very prestigious quality of living. Suites range from singularly stunning one bedrooms to sumptuous two bedroom plus den residences with evocative balconies up to exclusive penthouses and great penthouse suites with stepped terraces and oversized balconies.

### THE SKYMARK COLLECTION

DESIGN	TYPES	SIZE	STARTING PRICES
<b>1A</b>	1 Bedroom	640 sq. ft.	\$104,500
<b>1B</b>	1 Bedroom	705 sq. ft.	\$116,500
<b>1C</b>	1 Bedroom	762 sq. ft.	\$119,500
<b>2A</b>	2 Bedroom	949 sq. ft.	\$156,500
<b>2B</b>	2 Bedroom	955 sq. ft.	\$151,500
<b>2C</b>	2 Bedroom + Den	1,115 sq. ft.	\$177,500
<b>2D</b>	2 Bedroom	1,278 sq. ft.	\$207,500
<b>2E</b>	2 Bedroom + Den	1,390 sq. ft.	\$223,500

### THE SIGNATURE COLLECTION

DESIGN	TYPES	SIZE	STARTING PRICES
<b>PH1</b> Series	2 Bedroom + Den	1,715 sq. ft.	\$315,000
<b>PH2</b> Series	2 Bedroom + Den	1,746 sq. ft.	\$322,000
<b>PH3</b> Series	2 Bedroom + Family Room	2,118 sq. ft.	\$385,000
<b>PH4</b> Series	2 Bedroom + Den	1,930 sq. ft.	\$355,000
<b>PH5</b> Series	2 Bedroom + Family Room	2,053 sq. ft.	\$380,000
<b>PH6</b> Series	2 Bedroom + Family Room	1,980 sq. ft.	\$360,000



# EXCEPTIONAL FEATURES - CONTINUED

## THE SKYMARK COLLECTION

- White stippled ceiling finish graces all areas except the kitchen, laundry/storage\* rooms and bathrooms (kitchen, laundry/storage and bathroom ceilings are smooth and painted with white semi-gloss paint).

### *Floor Coverings - Above and beyond your expectations*

- Sophisticated imported ceramic floor tile\*\*\* in foyer, kitchen, breakfast area\*, bathrooms, laundry and storage\* area.
- Plush, thirty-six ounce broadloom\*\*\* with under pad in living room, dining room and bedrooms.

### *Kitchens - The gourmet experience*

- Custom-quality, Skymark West signature cabinetry\*\*\* and counter tops\*\*\*.
- Beautiful double stainless-steel ledge back sink with ceramic disk faucets equipped with a vegetable spray.
- Attractive ceramic tile\*\*\* back splash.
- High capacity stove hood fan, vented to the exterior.
- Spacious 18 cubic foot frost free refrigerator.
- Convenient 30 inch easy-clean range.
- Built-in quality dishwasher with white or black front panel.

### *Bathrooms - Your private retreat*

- Cultured marble countertops\*\*\* with integrated basin and ceramic disk faucets.
- Strip lighting over full-width vanity mirrors.
- Recessed medicine cabinets\* and vanity cabinets\* in main and ensuite bathrooms.
- Quality exhaust fans vented to the exterior.
- Rich ceramic tiling\*\*\* to floors and bathtub walls.
- Classic white bathroom fixtures throughout.
- Deep soaker bathtubs.
- Pressure balanced mixing valves in the bathtub and ceramic disk faucets.

### *Laundry - Perfectly convenient*

- Stacked washer and dryer.

### *Safety and Security - For your peace of mind*

- Personally encoded suite intrusion alarm system with key pad, door contact and voice communication to the concierge. Motion detectors are provided at the ground floor suites\*.
- Electronic communication system located in the lobby vestibule permits guests to communicate with the suite from the building entrance. Guests in the lobby vestibule can be viewed on resident's television.

- Smoke detectors connected to the suite intrusion alarm system and monitored by the concierge.
- Live surveillance cameras in strategic locations in the building, grounds and garage are monitored by the concierge. Selected surveillance cameras can be viewed on the resident's television.
- Computer controlled access system provided at all building entry points.
- Emergency response key chain pendants, usable on the building grounds and in the common areas, will alert the concierge of a distress call.
- Heat detectors are connected to the fire annunciation panel.
- Optional medic alert pendant.

### *Comfort Systems - State-of-the-art*

- Individually controlled heating and air conditioning systems for optimum comfort year round.
- Supplementary heating coil provided for added comfort control during seasonal system changeovers.

### *Electrical Service and Fixtures - Quality throughout*

- Individual service panels with circuit breakers.
- White decorative 'decora' style receptacles and switches throughout.
- Distinctive ceiling light fixtures in foyer, breakfast area, family/den\*, dining room, bedrooms and hallways.
- Convenient switch-controlled split outlets in living room.
- Multi-port outlets supporting telephone, television and computers.

### *Multi-media Technology - Connected to the electronic world*

- Structured wiring infrastructure to support the latest entertainment and communications services including cable television, direct-to-home satellite, high speed Internet access and flat rate long distance telephone service providers.
- Portable video teleconferencing equipment is available for use in the resident's suite (services charge applicable).

\* - denotes availability determined by suite design.

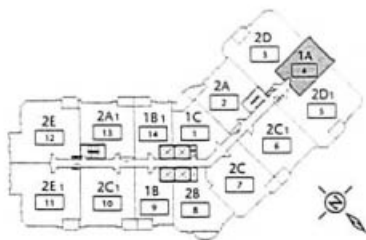
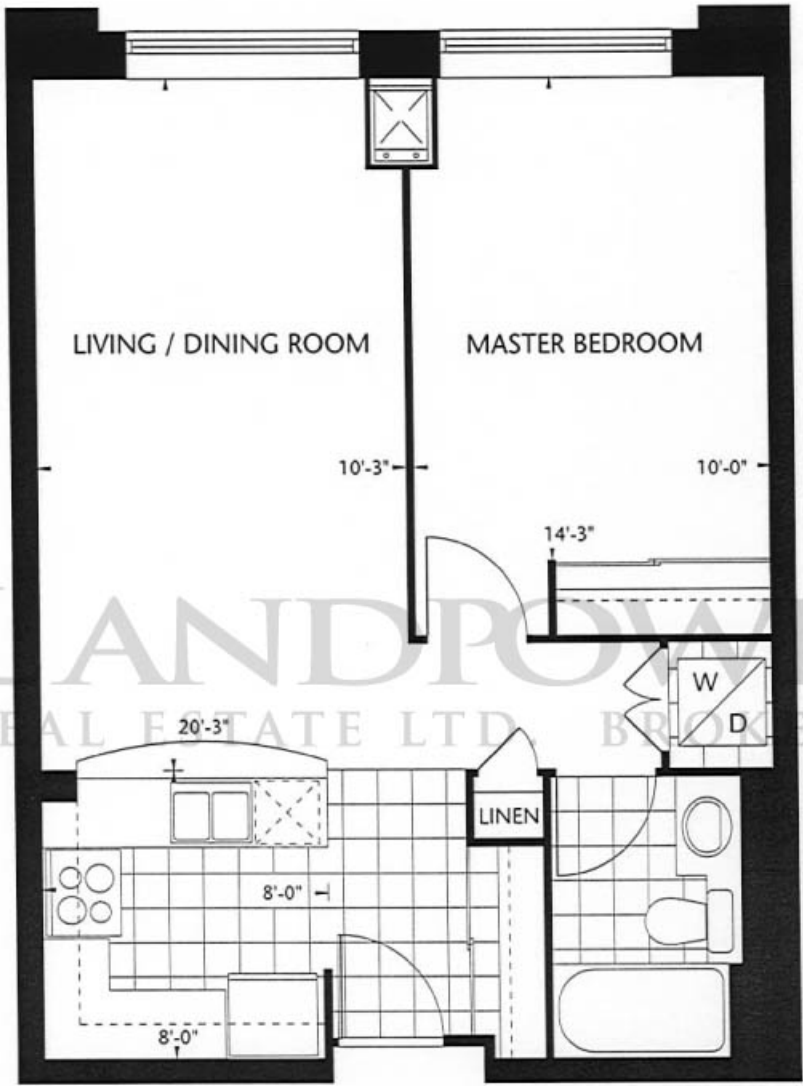
\*\*\* - denotes finishes to be selected from the vendor's samples.

All features and finishes subject to change without notice, E. & O.E.

Published Date: March 14, 1998.



# Residence 1A



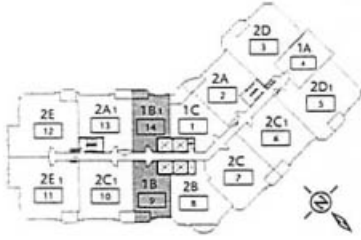
## TYPICAL FLOOR PLATE

Materials, specifications are subject to change without notice. E.&O.E.

# Residence 1B



LANDPOWER  
REAL ESTATE LTD. BROKERAGE



**TYPICAL FLOOR PLATE**

Materials, specifications are subject to change without notice. E.&O.E.



# Residence 1C



LANDPOWER REAL ESTATE LTD. BROKERAGE



## TYPICAL FLOOR PLATE

Materials, specifications are subject to change without notice. E.&O.E.

# Residence 2A



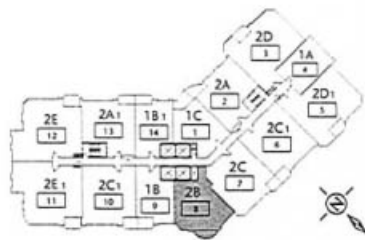
## TYPICAL FLOOR PLATE

Materials, specifications are subject to change without notice. E.&O.E.

# Residence 2B



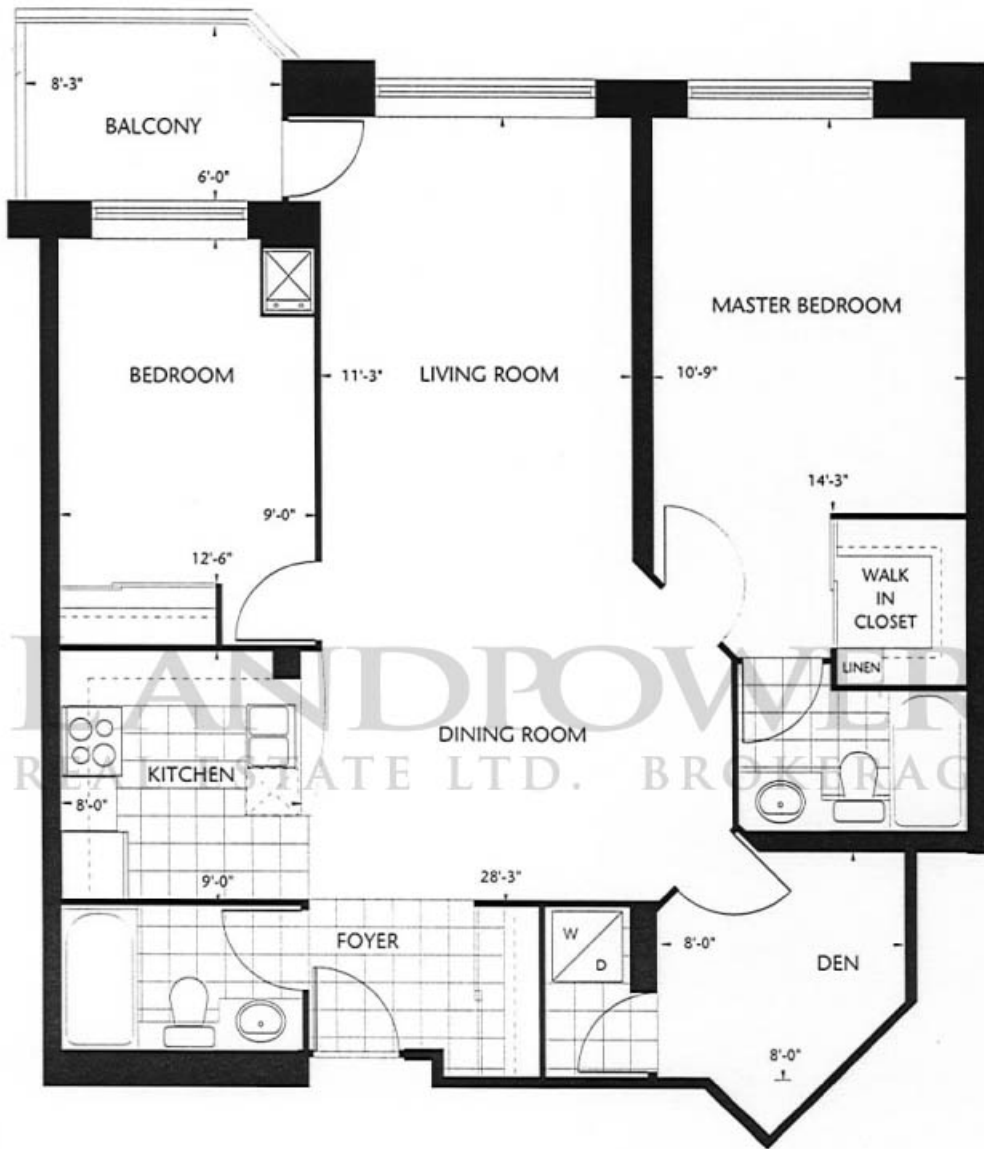
LANDPOWER  
REAL ESTATE LTD. BROKER/GE



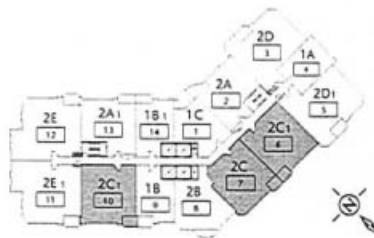
## TYPICAL FLOOR PLATE

Materials, specifications are subject to change without notice. E.&O.E.

# Residence 2C



LANDPOWER REAL ESTATE LTD. BROKERAGE



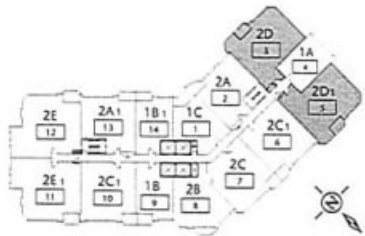
## TYPICAL FLOOR PLATE

Materials, specifications are subject to change without notice. E.&O.E.

# Residence 2D



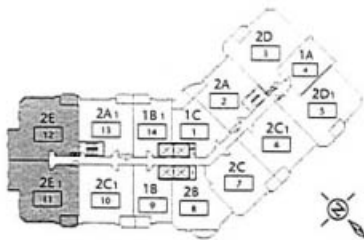
LANDPOWER  
REAL ESTATE LTD. BROKERAGE



## TYPICAL FLOOR PLATE

Materials, specifications are subject to change without notice. E.&O.E.

# Residence 2E



## TYPICAL FLOOR PLATE

Materials, specifications are subject to change without notice. E.&O.E.

# EXCEPTIONAL FEATURES

## THE SIGNATURE COLLECTION

### (PENTHOUSE SUITES)

#### SUITE FEATURES AND FINISHES

##### *Finishes - Attention to every detail*

- Interior walls painted in your choice of colour\*\*\* with two coats of fine quality latex paint (kitchen, bathrooms, and all woodwork and trim painted with durable semi-gloss paint).
- Distinctive paneled interior doors with upgraded polished brass hardware.
- Elegant French doors open onto the balcony and terraces\*.
- Prestigious five inch\*\*\* baseboards are provided throughout all areas of the suite except bathrooms and laundry/storage rooms\*.
- Cornice moulding in living room, dining room and foyer along with the Rosette around the dining room light fixtures adds a classic touch.
- All sliding closet doors are mirrored creating a more spacious ambiance.
- Durable white cultured marble window sills.
- Nine foot ceilings with a white stippled finish grace all areas except the kitchen, laundry/storage\* rooms and bathrooms (kitchen, laundry/storage and bathroom ceilings are smooth and painted with white semi-gloss paint).
- Rough-in for a central vacuum cleaner system\*.
- Gas fireplace with mantle and marble hearth\*\*\*.

##### *Floor Coverings - Above and beyond your expectations*

- Selection of polished marble, slate or limestone floor tile\*\*\* in foyer.
- Sophisticated imported ceramic floor tile\*\*\* in kitchen, breakfast area\*, bathrooms, laundry and storage\* area.
- Plush, forty ounce broadloom\*\*\* with foam under pad in living room, dining room and bedrooms.

##### *Kitchens - The gourmet experience*

- Custom-quality, Skymark West Signature Cabinetry\*\*\* and counter tops\*\*\* with under cabinet fluorescent lighting.
- Beautiful double stainless-steel ledge back sink with ceramic disk single-lever pull out vegetable spray faucet.
- Attractive ceramic tile\*\*\* or mirror back splash.

- Built-in high capacity stove hood fan, vented to the exterior.
- Spacious 22 cubic foot frost free, side by side refrigerator.
- Convenient 30 inch self-cleaning range.
- Built-in upgraded quality dishwasher with white or black front panel.

##### *Bathrooms - Your private retreat*

- Elegant slab marble counter top\*\*\* in ensuite bathroom, complete with under mount sink and ceramic disk faucets.
- Cultured marble countertops\*\*\* with integrated basin in alternate bathrooms.
- Strip lighting over full-width vanity mirrors.
- Recessed medicine cabinets\* and vanity cabinets\* in main and ensuite bathrooms (excludes powder rooms).
- Statuesque pedestal sink in powder room\*.
- Quality exhaust fans in all bathrooms, vented to the exterior.
- Rich ceramic tiling\*\*\* to floors and shower\* and bathtub walls.
- Dramatic and inviting oval corner tub in all ensuite bathrooms, complete with perimeter ceramic tile surround\*\*\*.
- Distinctive clear glass shower stalls\* with ceiling light.
- Classic white bathroom fixtures throughout.
- Deep soaker bathtub in alternate bathroom.
- Pressure balanced mixing valves in the bathtub and shower stall\* with ceramic disk faucets.

##### *Laundry - Perfectly convenient*

- Heavy-duty wiring and receptacle for dryer.
- Side by side full size washer and dryer with upper cabinetry\*\*\* and laundry tub\*.

\* - denotes availability determined by suite design.

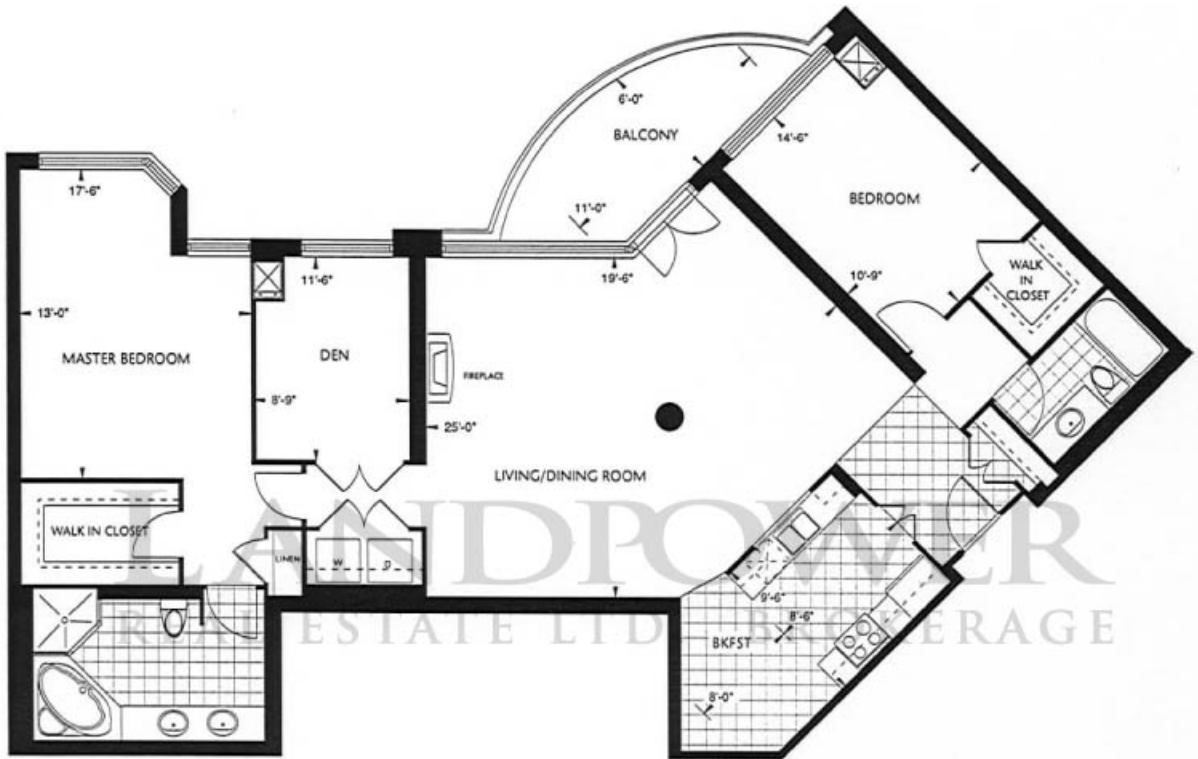
\*\*\* - denotes finishes to be selected from the vendor's samples.

All features and finishes subject to change without notice, E. & O.E.

Published Date: March 14, 1998.



# Residence



## SIGNATURE COLLECTION FLOOR PLATE

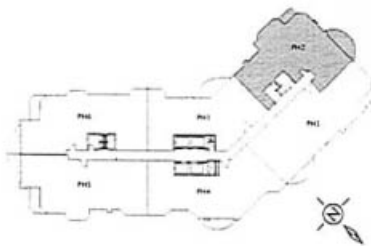
Materials, specifications are subject to change without notice. E.&O.E.



# Residence PH2



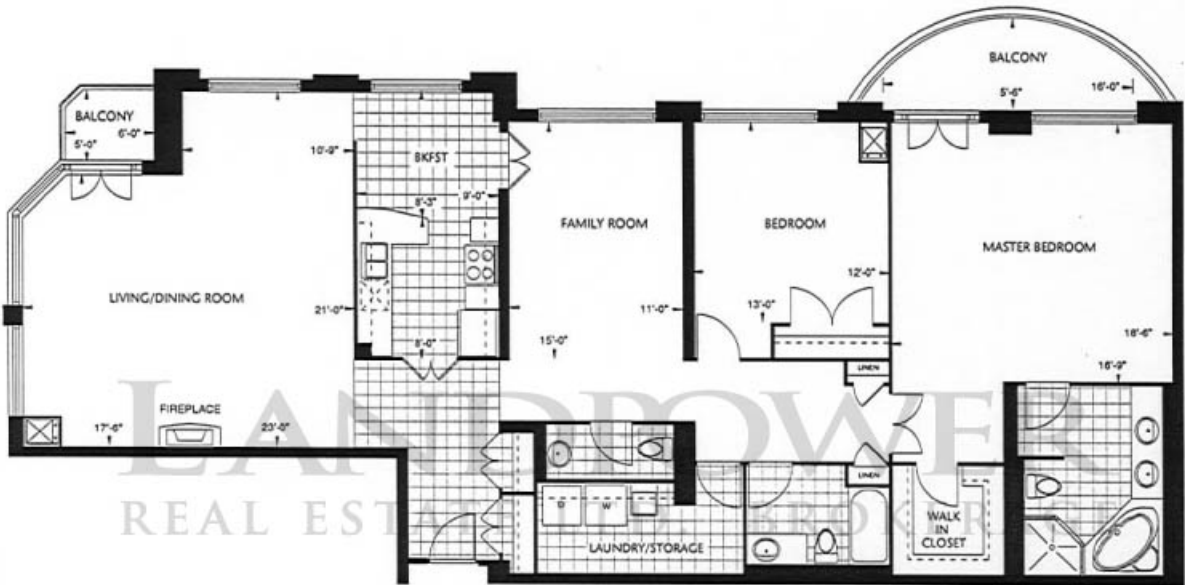
LANDFLOWER  
REAL ESTATE LTD. BROKERAGE



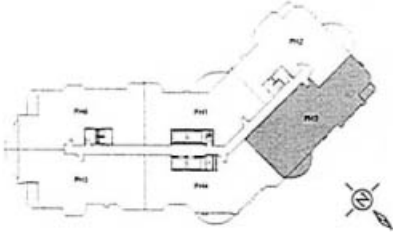
## SIGNATURE COLLECTION FLOOR PLATE

Materials, specifications are subject to change without notice. E.&O.E.

# Residence



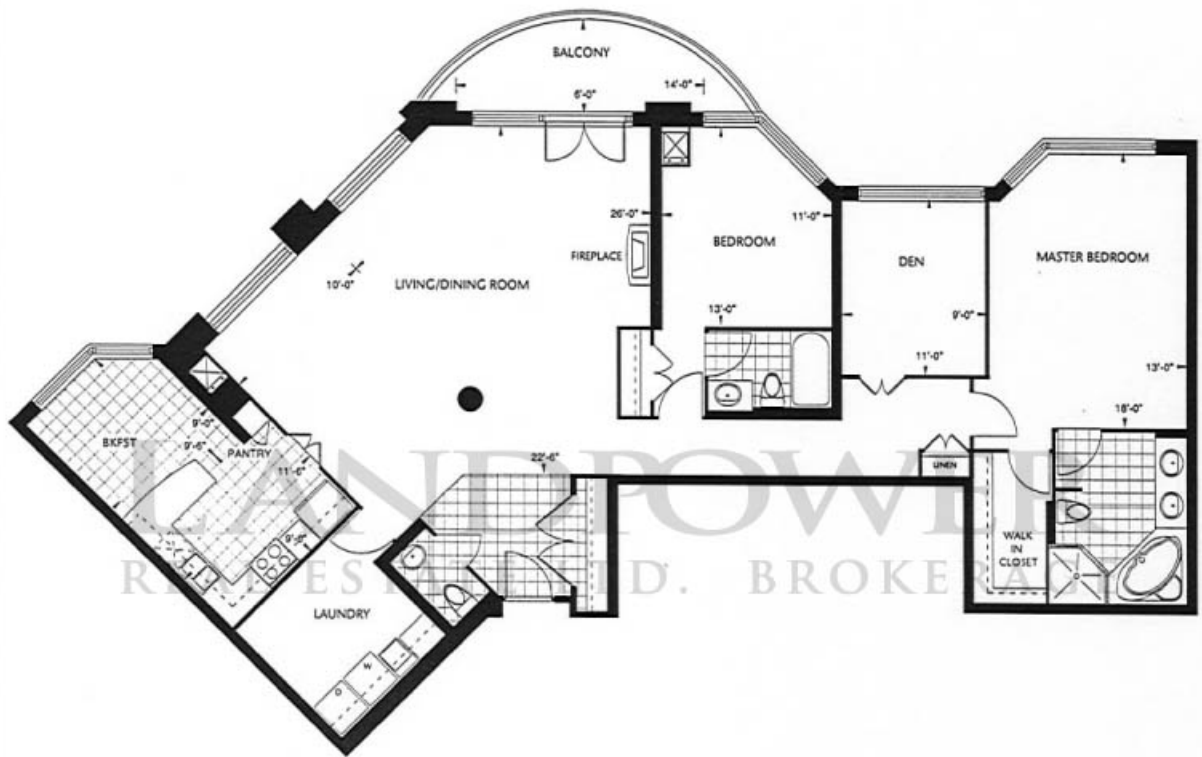
LANCASHIRE  
REAL ESTATE



## SIGNATURE COLLECTION FLOOR PLATE

Materials, specifications are subject to change without notice. E.&O.E.

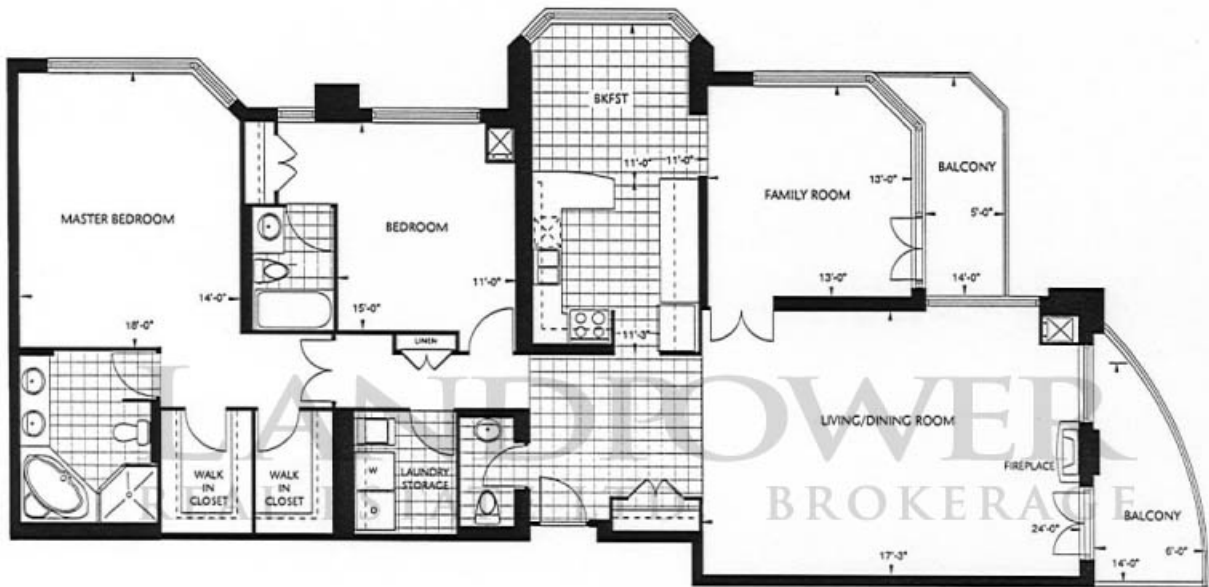
# Residence



## SIGNATURE COLLECTION FLOOR PLATE

Materials, specifications are subject to change without notice. E.&O.E.

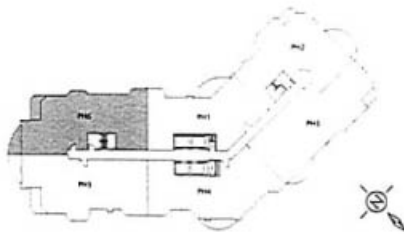
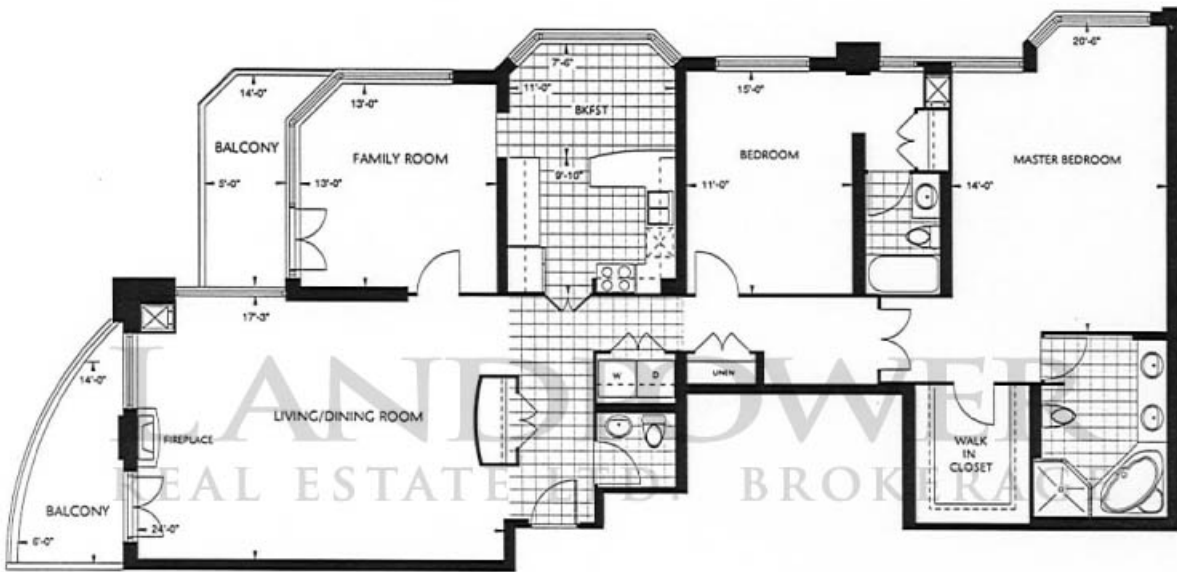
# Residence P115



## SIGNATURE COLLECTION FLOOR PLATE

Materials, specifications are subject to change without notice. E.&O.E.

# Residence



## SIGNATURE COLLECTION FLOOR PLATE

Materials, specifications are subject to change without notice. E.&O.E.