

TRIDEL®

碧 雲 閣

TAM O'SHANTER

*Highlands*

LANDPOWER  
REAL ESTATE LTD. BROKERAGE



*Signature Series*





## SUITE FEATURES & FINISHES

### Suite 101

#### TOWER

- Exterior Stucco, pre-finished aluminium window frames and tinted windows.
- Innovative architectural design.
- Elegant designer finishing details in corridors and suite entrance doorways.
- Four well-appointed elevators.
- Computerized security card system for convenient access to common areas.
- Garbage compactor and recycling facilities.

#### RECREATION FACILITIES

The Tam O'Shanter Highlands recreation centre offers the perfect blend of a private country club and a modern fitness spa. All rooms are luxuriously decorated and furnished for your comfort, and totally equipped for your pleasure.

- Indoor swimming pool with sun deck.
- Indoor whirlpool.
- Exercise room with multi-purpose gym and fitness equipment.
- "His & Hers" change rooms with saunas.
- Multi-purpose room with wet bar, kitchen and audiovisual equipment for casual and formal entertaining.
- Card room suitable for Ma-Jong, Bridge or Euchre, complete with table and chairs.
- On site property management office.

#### Other Facilities Includes :

- Extensively landscaped ground with walkways, seating areas, gazebo, soft plantings, and all bordered by a 5-foot decorative perimeter fence to create a private oasis.
- Two-fully furnished guest suites to accommodate your overnight guests (available at a nominal charge).

#### RESIDENTS' PARKING

- Underground parking garage door controlled by personally encoded remote-control transmitter.
- Closed-circuit cameras throughout the garage area, with two-way voice communication with the gatehouse, for surveillance and access monitoring.
- Parabolic mirrors for greater visibility of pedestrians and vehicles.
- Ventilated and protected by fire sprinkler system for safety and protection.

#### UNIQUE INTERIOR FINISHES FOR SUITE 101

- Clear frameless mirror sliders in foyer, master bedroom and second bedroom.
- Colonial baseboards (5-3/4") throughout.
- Upgraded 7'-6" doors throughout suite.
- Eleven foot ceiling heights throughout suite.
- Upgraded light fixture in dining area.
- Four inch halogen potlights in dining/living room and foyer.
- Window coverings in master bedroom, second bedroom and solarium.
- Cultured marble window sills.
- Cornice moulding in foyer, living/dining room and solarium.
- Doric columns in solarium.
- Interior walls of foyer, living/dining room and solarium painted with quality latex paint.
- Kitchens, bathrooms and all woodwork and trim painted with semi-gloss paint.
- Marble tile in foyer.
- Ceramic floor tiles in kitchen, washrooms and laundry/storage areas.
- Plush 40 oz. broadloom with foam underpad in living room, dining room and bedrooms.
- Recessed medicine cabinets in main and ensuite bathrooms\*.
- Privacy locks on all doors.\*



## SUITE FEATURES & FINISHES

### Suite 101

#### KITCHENS

- Custom designed Tridel "Signature Series" cabinets, with 41" in height uppers.
- Four inch halogen potlights.
- Interior wall painted with quality latex paint.
- Upgraded Price Pfister pull out spray spout polished chrome.
- Ceramic backsplash.
- Kitchen valence lighting.
- Built-in high-capacity hood fan, vented to outside.
- Double stainless steel sinks.

#### BATHROOMS

- Frameless shower enclosures in main bathroom and ensuite.
- Upgraded light fixtures in main bathroom and ensuite.
- Interior wall painted with quality latex paint in main bathroom and ensuite.
- Recessed medicine cabinets in main and ensuite bathroom

#### APPLIANCE PACKAGE

- 18 cubic foot front-free refrigerator.
- 30" easy-clean range.
- Built-in dishwasher.
- Washer and dryer.
- All appliances white.

#### SAFETY AND SECURITY

- Gatehouse with a security guard on duty 24 hours a day to receive residents and guests and to monitor suite intrusion alarm systems and garage, recreation centre and other common area access control systems.
- Personally-encoded intrusion alarm system with two-way voice communication to the gatehouse.
- Smoke detectors.
- Heat detectors (connected to the fire annunciation panel).

#### ELECTRICAL SERVICE AND FIXTURES

- Individual service panel with circuit breakers.
- Copper wiring throughout.
- Pre-wired outlets for cable TV and telephone.
- White receptacles and switches throughout.
- Ceiling light fixtures in foyer and hallways.
- Ceiling light outlet in dining room, bedrooms, and family rooms.

---

Suite Design	Approx. sq.ft	Price
--------------	---------------	-------

101	1,432	\$288,800
-----	-------	-----------

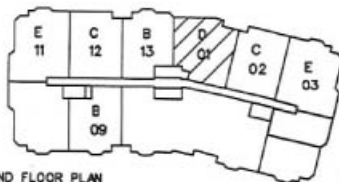
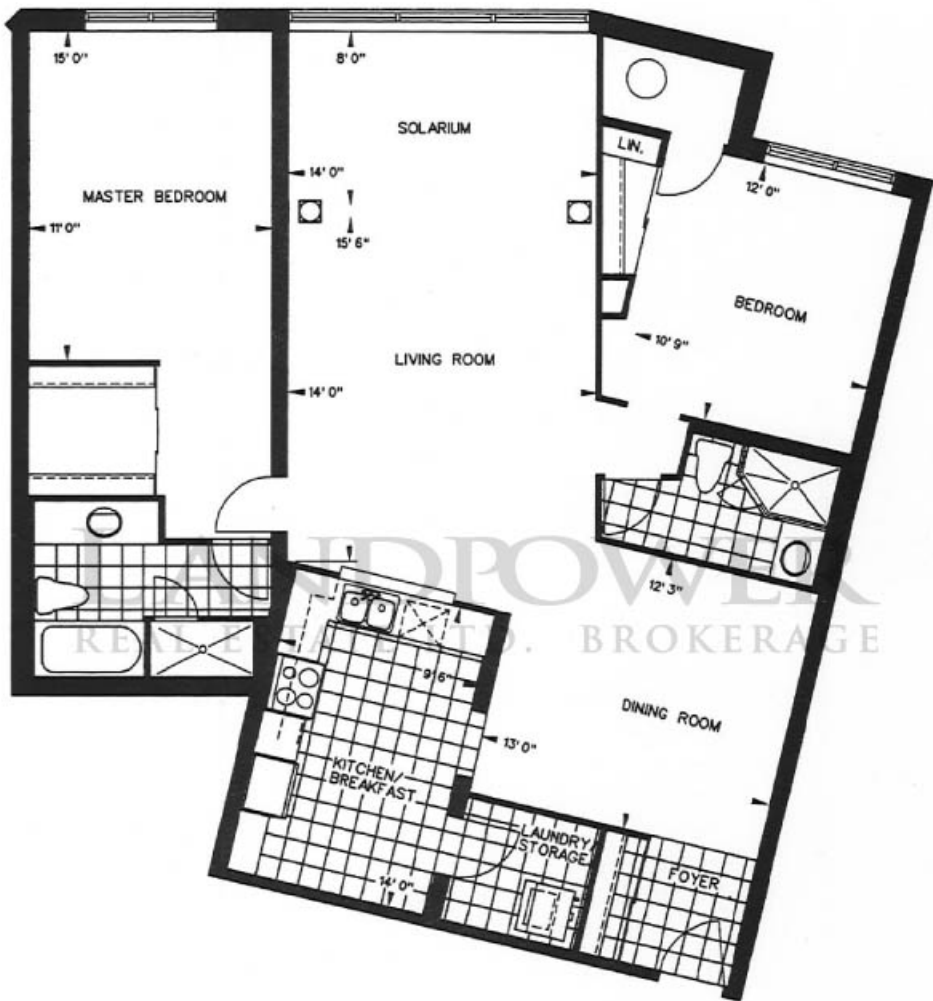
All features and finishes subject to change without notice. E. & O.E.

\* Availability determined by suite design.

**TRIDEL**<sup>®</sup>  
TAM O'SHANTER  
*Highlands*



# SUITES 101



GROUND FLOOR PLAN



## SUITE FEATURES & FINISHES

### Suite 102

#### TOWER

- Exterior Stucco, pre-finished aluminium window frames and tinted windows.
- Innovative architectural design.
- Elegant designer finishing details in corridors and suite entrance doorways.
- Four well-appointed elevators.
- Computerized security card system for convenient access to common areas.
- Garbage compactor and recycling facilities.

#### RECREATION FACILITIES

The Tam O'Shanter Highlands recreation centre offers the perfect blend of a private country club and a modern fitness spa. All rooms are luxuriously decorated and furnished for your comfort, and totally equipped for your pleasure.

- Indoor swimming pool with sun deck.
- Indoor whirlpool.
- Exercise room with multi-purpose gym and fitness equipment.
- "His & Hers" change rooms with saunas.
- Multi-purpose room with wet bar, kitchen and audiovisual equipment for casual and formal entertaining.
- Card room suitable for Ma-Jong, Bridge or Euchre, complete with table and chairs.
- On site property management office.

#### Other Facilities Includes :

- Extensively landscaped ground with walkways, seating areas, gazebo, soft plantings, and all bordered by a 5-foot decorative perimeter fence to create a private oasis.
- Two-fully furnished guest suites to accommodate your overnight guests (available at a nominal charge).

#### RESIDENTS' PARKING

- Underground parking garage door controlled by personally encoded remote-control transmitter.
- Closed-circuit cameras throughout the garage area, with two-way voice communication with the gatehouse, for surveillance and access monitoring.
- Parabolic mirrors for greater visibility of pedestrians and vehicles.
- Ventilated and protected by fire sprinkler system for safety and protection.

#### UNIQUE INTERIOR FINISHES FOR SUITE 102

- Hardwood strip flooring (1/2" x 1-3/4") in dining & living room and solarium .
- Upgraded 7'-6" doors throughout suite.
- Colonial baseboards (5-3/4") throughout.
- Four inch halogen potlights in foyer and dining/living room areas.
- Upgraded light fixtures in foyer and dining room.
- Eight inch raised floor in solarium and dining room.
- Cultured marble window sills.
- Exhaust fans in all bathrooms vented to outside.
- Pressure-balance mixing valve in tubs and showers.
- Privacy locks on all doors.\*
- Recessed medicine cabinets in main and ensuite bathrooms.\*



## SUITE FEATURES & FINISHES

### Suite 102

#### KITCHENS

- Valence lighting.
- Interior walls painted with quality latex paint.
- Ceramic floor tiles in kitchen, laundry room and foyer.
- Ceramic tiles backsplash.
- Custom designed Tridel "Signature Series" cabinets, with 41" in height uppers.
- Four inch halogen potlights.
- Built-in pantry with niche and potlight.
- Built-in high-capacity hood fan, vented to outside.

#### BATHROOMS

- Interior walls painted with quality latex paint.
- Upgraded light fixtures in main bathroom and ensuite.

#### APPLIANCE PACKAGE

- 18 cubic foot front-free refrigerator.
- 30" easy-clean range.
- Built-in dishwasher.
- Washer and dryer.
- All appliances white.

#### SAFETY AND SECURITY

- Gatehouse with a security guard on duty 24 hours a day to receive residents and guests and to monitor suite intrusion alarm systems and garage, recreation centre and other common area access control systems.
- Personally-encoded intrusion alarm system with two-way voice communication to the gatehouse.
- Smoke detectors.
- Heat detectors (connected to the fire annunciation panel).

#### ELECTRICAL SERVICE AND FIXTURES

- Individual service panel with circuit breakers.
- Copper wiring throughout.
- Pre-wired outlets for cable TV and telephone.
- White receptacles and switches throughout.
- Ceiling light fixtures in foyer and hallways.
- Ceiling light outlet in dining room, bedrooms, and family rooms.

---

Suite Design	Approx. sq.ft	Price
102	1,335	\$268,800

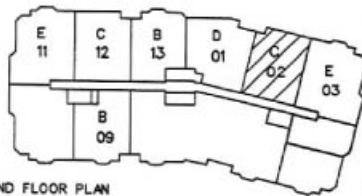
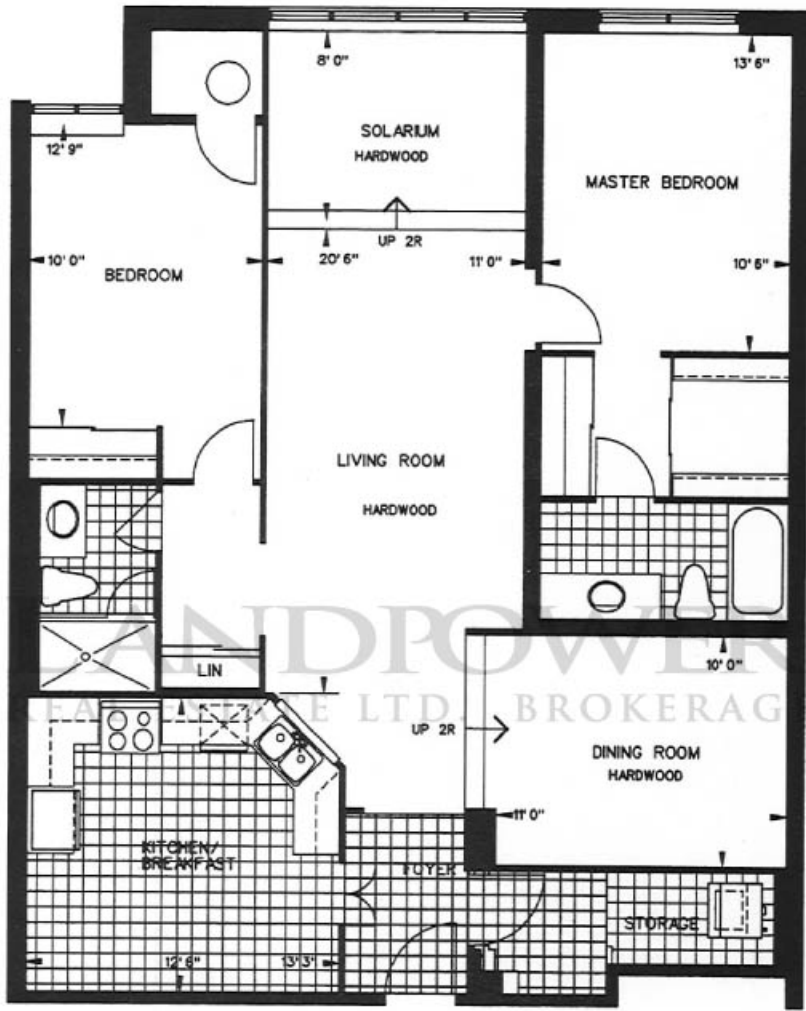
---

All features and finishes subject to change without notice. E. & O.E.  
\* Availability determined by suite design.

**TRIDEL**  
TAM O'SHANTER  
*Highlands*



# SUITES 102



**TRIDEL**  
TAM O'SHANTER  
*Highlands*





## SUITE FEATURES & FINISHES

### Suite 103

#### TOWER

- Exterior Stucco, pre-finished aluminium window frames and tinted windows.
- Innovative architectural design.
- Elegant designer finishing details in corridors and suite entrance doorways.
- Four well-appointed elevators.
- Computerized security card system for convenient access to common areas.
- Garbage compactor and recycling facilities.

#### RECREATION FACILITIES

The Tam O'Shanter Highlands recreation centre offers the perfect blend of a private country club and a modern fitness spa. All rooms are luxuriously decorated and furnished for your comfort, and totally equipped for your pleasure.

- Indoor swimming pool with sun deck.
- Indoor whirlpool.
- Exercise room with multi-purpose gym and fitness equipment.
- "His & Hers" change rooms with saunas.
- Multi-purpose room with wet bar, kitchen and audiovisual equipment for casual and formal entertaining.
- Card room suitable for Ma-Jong, Bridge or Euchre, complete with table and chairs.
- On site property management office.

#### Other Facilities Includes :

- Extensively landscaped ground with walkways, seating areas, gazebo, soft plantings, and all bordered by a 5-foot decorative perimeter fence to create a private oasis.
- Two-fully furnished guest suites to accommodate your overnight guests (available at a nominal charge).

#### RESIDENTS' PARKING

- Underground parking garage door controlled by personally encoded remote-control transmitter.
- Closed-circuit cameras throughout the garage area, with two-way voice communication with the gatehouse, for surveillance and access monitoring.
- Parabolic mirrors for greater visibility of pedestrians and vehicles.
- Ventilated and protected by fire sprinkler system for safety and protection.

#### UNIQUE INTERIOR FINISHES FOR SUITE 103

- Interior walls painted in foyer, living/dining room, bedrooms & den with quality latex paint.
- All trim (including chair rail & wainscotting) and doors to be painted with semi-gloss paint.
- Upgraded Perlato Svevo (12 x 12) CIOT marble in foyer area.
- Hardwood strip flooring (1/2" x 1-3/4") in living/dining room and den.
- Four inch halogen potlights in foyer, living room and dining room area.
- Upgraded 7'-6" doors throughout suite.
- Colonial baseboards (5-3/4") throughout suite.
- Eleven foot ceiling heights throughout suite.
- Upgraded dining room light fixture.
- Frameless clear mirror closet sliders in foyer, master bedroom and second bedroom.
- Window coverings in master bedroom, living room, dining room, den and second bedroom.
- Three inch chair rail in foyer, living room and dining room.
- Wainscotting (2-3/4" x 1-1/8") in foyer, living room and dining room.
- Cultured marble window sills.
- Recessed medicine cabinets in main and ensuite bathrooms.\*
- Privacy locks on all doors.\*



## SUITE FEATURES & FINISHES

### Suite 103

#### KITCHENS

- Valence lighting
- Upgraded Price Pfister pull out chrome faucet.
- Window coverings
- Hardwood strip flooring (1/2" x 1-3/4")
- Custom designed Tridel "Signature Series" cabinets, with 41" in height uppers.
- Ceramic backsplash.
- Upgraded light fixtures.
- Interior walls painted with quality latex paint.
- Built-in high-capacity hood fan, vented to outside.

#### BATHROOMS

- Built-in niche/shelf in ensuite bathroom.
- Interior walls painted with quality latex paint in master bedroom and ensuite.
- Pelato Svevo marble (12 x 12 marble tile) in main bathroom.
- Upgraded light fixtures in main bathroom and ensuite bathroom.
- His/Hers sink

#### APPLIANCE PACKAGE

- 18 cubic foot front-free refrigerator.
- 30" easy-clean range.
- Built-in dishwasher.
- Washer and dryer.
- All appliances white.

#### SAFETY AND SECURITY

- Gatehouse with a security guard on duty 24 hours a day to receive residents and guests and to monitor suite intrusion alarm systems and garage, recreation centre and other common area access control systems.
- Personally-encoded intrusion alarm system with two-way voice communication to the gatehouse.
- Smoke detectors.
- Heat detectors (connected to the fire annunciation panel).

#### ELECTRICAL SERVICE AND FIXTURES

- Individual service panel with circuit breakers.
- Copper wiring throughout.
- Pre-wired outlets for cable TV and telephone.
- White receptacles and switches throughout.
- Ceiling light fixtures in foyer and hallways.
- Ceiling light outlet in dining room, bedrooms, and family rooms.

---

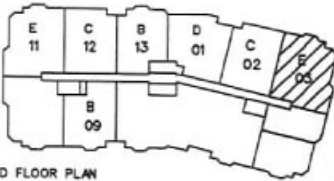
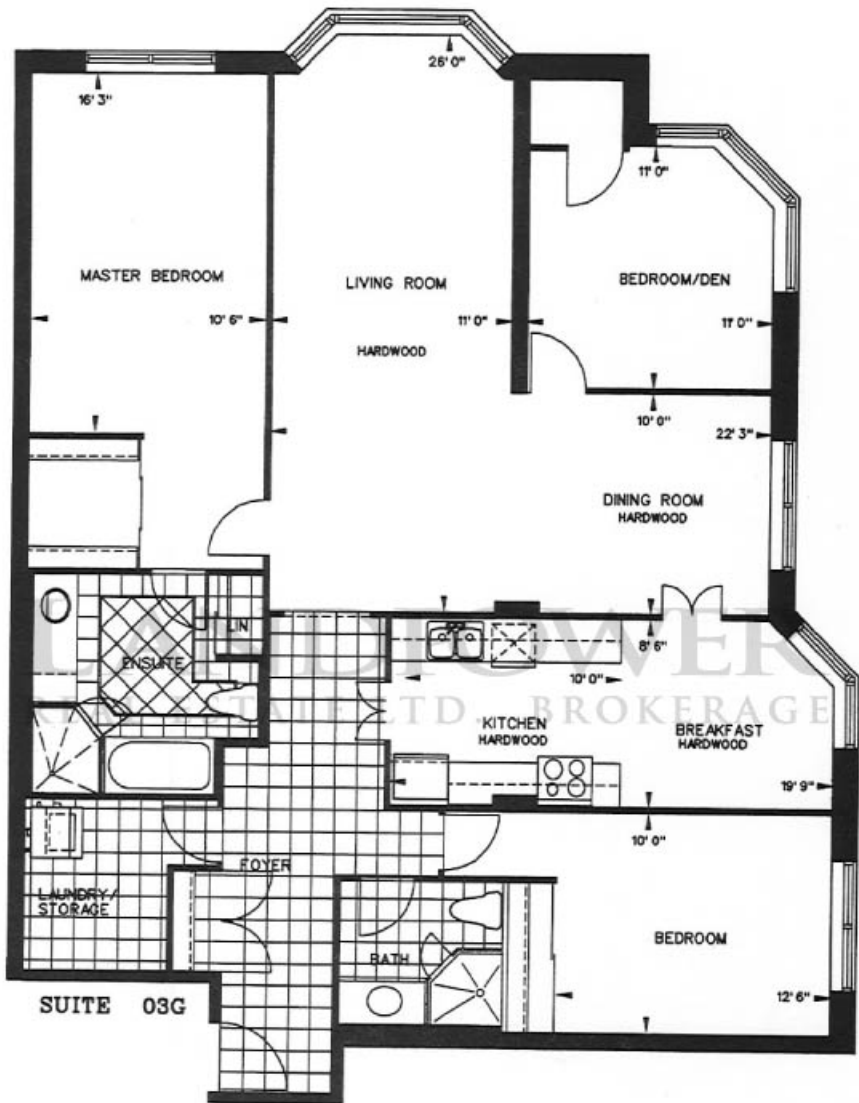
Suite Design	Approx. sq.ft	Price
103	1,575	\$318,800

---

All features and finishes subject to change without notice. E. & O.E.  
\* Availability determined by suite design.



# SUITES 103



GROUND FLOOR PLAN

**TRIDEL**<sup>®</sup>  
 TAM O'SHANTER  
*Highlands*



## SUITE FEATURES & FINISHES

### Suite 111

#### TOWER

- Exterior Stucco, pre-finished aluminium window frames and tinted windows.
- Innovative architectural design.
- Elegant designer finishing details in corridors and suite entrance doorways.
- Four well-appointed elevators.
- Computerized security card system for convenient access to common areas.
- Garbage compactor and recycling facilities.

#### RECREATION FACILITIES

The Tam O'Shanter Highlands recreation centre offers the perfect blend of a private country club and a modern fitness spa. All rooms are luxuriously decorated and furnished for your comfort, and totally equipped for your pleasure.

- Indoor swimming pool with sun deck.
- Indoor whirlpool.
- Exercise room with multi-purpose gym and fitness equipment.
- "His & Hers" change rooms with saunas.
- Multi-purpose room with wet bar, kitchen and audiovisual equipment for casual and formal entertaining.
- Card room suitable for Ma-Jong, Bridge or Euchre, complete with table and chairs.
- On site property management office.

#### Other Facilities Includes :

- Extensively landscaped ground with walkways, seating areas, gazebo, soft plantings, and all bordered by a 5-foot decorative perimeter fence to create a private oasis.
- Two-fully furnished guest suites to accommodate your overnight guests (available at a nominal charge).

#### RESIDENTS' PARKING

- Underground parking garage door controlled by personally encoded remote-control transmitter.
- Closed-circuit cameras throughout the garage area, with two-way voice communication with the gatehouse, for surveillance and access monitoring.
- Parabolic mirrors for greater visibility of pedestrians and vehicles.
- Ventilated and protected by fire sprinkler system for safety and protection.

#### UNIQUE INTERIOR FINISHES FOR SUITE 111

- Interior walls painted in foyer, living room and dining room with quality latex paint.
- Upgraded baseboards (5-3/4") throughout suite.
- Upgraded doors (7'-6") throughout suite.
- Wainscoting in foyer, living room and dining room areas.
- Eleven foot ceiling heights throughout suite.
- Upgraded light fixtures in foyer, and dining room.
- Frame moulding around doorway in foyer and living room.
- Window coverings in dining room, second bedroom, living room and master bedroom.
- Crema Marfil and Marron Imperiale marble including border and butterfly in foyer.
- Clear frameless and clear mirror sliders in foyer, master bedroom and second bedroom.
- Cornice moulding in foyer, living room and dining room area.
- Three inch chair rail in foyer, living room and dining room area.
- Cultured marble window sills.
- Recessed medicine cabinets in main and ensuite bathrooms.\*
- Privacy locks on all doors.\*



## SUITE FEATURES & FINISHES

### Suite 111

#### KITCHENS

- Interior walls painted with quality latex paint.
- Four inch halogen potlights.
- Valence lighting.
- Window coverings.
- Custom designed Tridel "Signature Series" cabinets, with 41" in height uppers.
- Upgraded Price Pfister pull out chrome faucet.

#### BATHROOMS

- Built-in shelf/niche in ensuite bathroom.
- Interior walls painted in master bedroom and ensuite with quality latex paint.
- Crema Marfil marble in main bathroom.
- Ceramic tile floor in ensuite bathroom.
- Upgraded light fixture in main bathroom and ensuite.

#### APPLIANCE PACKAGE

- 18 cubic foot front-free refrigerator.
- 30" easy-clean range.
- Built-in dishwasher.
- Washer and dryer.
- All appliances white.

#### SAFETY AND SECURITY

- Gatehouse with a security guard on duty 24 hours a day to receive residents and guests and to monitor suite intrusion alarm systems and garage, recreation centre and other common area access control systems.
- Personally-encoded intrusion alarm system with two-way voice communication to the gatehouse.
- Smoke detectors.
- Heat detectors (connected to the fire annunciation panel).

#### ELECTRICAL SERVICE AND FIXTURES

- Individual service panel with circuit breakers.
- Copper wiring throughout.
- Pre-wired outlets for cable TV and telephone.
- White receptacles and switches throughout.
- Ceiling light fixtures in foyer and hallways.
- Ceiling light outlet in dining room, bedrooms, and family rooms.

---

Suite Design

Approx. sq.ft

Price

111

1,400

\$308,800

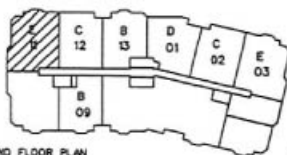
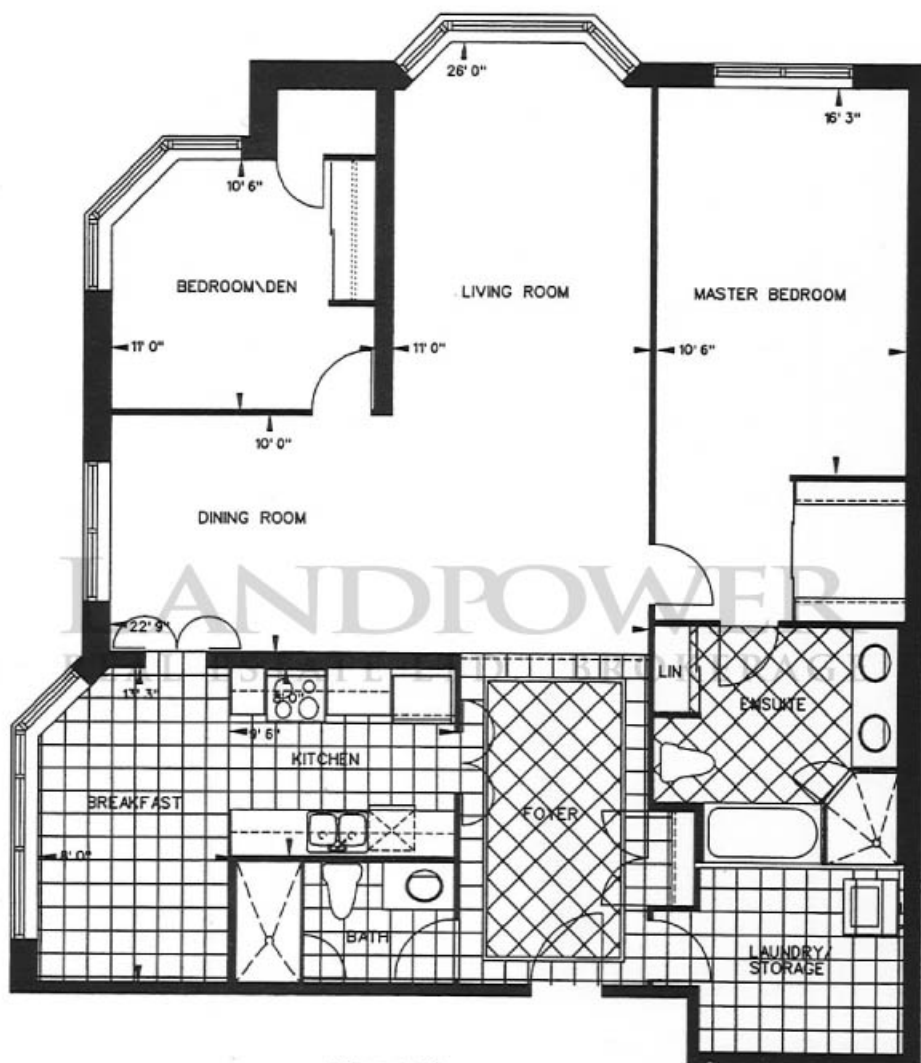
---

All features and finishes subject to change without notice. E. & O.E.  
\* Availability determined by suite design.

**TRIDEL**<sup>®</sup>  
TAM O'SHANTER  
*Highlands*



# SUITES 111



GROUND FLOOR PLAN



## SUITE FEATURES & FINISHES

### Suite 112

#### TOWER

- Exterior Stucco, pre-finished aluminium window frames and tinted windows.
- Innovative architectural design.
- Elegant designer finishing details in corridors and suite entrance doorways.
- Four well-appointed elevators.
- Computerized security card system for convenient access to common areas.
- Garbage compactor and recycling facilities.

#### RECREATION FACILITIES

The Tam O'Shanter Highlands recreation centre offers the perfect blend of a private country club and a modern fitness spa. All rooms are luxuriously decorated and furnished for your comfort, and totally equipped for your pleasure.

- Indoor swimming pool with sun deck.
- Indoor whirlpool.
- Exercise room with multi-purpose gym and fitness equipment.
- "His & Hers" change rooms with saunas.
- Multi-purpose room with wet bar, kitchen and audiovisual equipment for casual and formal entertaining.
- Card room suitable for Ma-Jong, Bridge or Euchre, complete with table and chairs.
- On site property management office.

#### Other Facilities Includes :

- Extensively landscaped ground with walkways, seating areas, gazebo, soft plantings, and all bordered by a 5-foot decorative perimeter fence to create a private oasis.
- Two-fully furnished guest suites to accommodate your overnight guests (available at a nominal charge).

#### RESIDENTS' PARKING

- Underground parking garage door controlled by personally encoded remote-control transmitter.
- Closed-circuit cameras throughout the garage area, with two-way voice communication with the gatehouse, for surveillance and access monitoring.
- Parabolic mirrors for greater visibility of pedestrians and vehicles.
- Ventilated and protected by fire sprinkler system for safety and protection.

#### UNIQUE INTERIOR FINISHES FOR SUITE 112

- Interior walls painted with quality latex paint in all bathrooms, bedrooms, foyer, living room, dining room and solarium.
- All trim (including chair rail and wainscotting) and doors to be painted with semi-gloss paint.
- Hardwood strip flooring (1/2" x 1-3/4") in living room, dining room and solarium.
- Perlino Rosato marble with Juperana Champagne CIOT border in foyer.
- Eleven foot ceiling height throughout suite.
- Window coverings in master bedroom, solarium and second bedroom.
- Four inch upgraded halogen pot lights in living room, dining room, master bedroom and second bedroom.
- Cultured marble window sills.
- Privacy locks on all doors.\*
- Recessed medicine cabinets in main and ensuite bathrooms.\*
- Exhaust fans in all bathrooms vented to outside.



## SUITE FEATURES & FINISHES

### Suite 112

#### KITCHENS

- Interior walls painted with quality latex paint.
- Ceramic backsplash.
- Upgraded light fixture.
- Custom designed Tridel "Signature Series" cabinets, with 41" in height uppers.
- Bi-parting french doors (standard height).
- Upgraded Price Pfister pull out chrome faucets

#### BATHROOMS

- Upgraded 5 3/4" baseboard throughout suite.
- Clear mirror and frameless closet sliders in master bedroom and second bedroom.
- Five inch cornice moulding in foyer, living room, dining room and solarium.
- Columns in solarium.
- Three inch chair rail in foyer, living room, dining room and solarium.
- Wainscotting (2-3/4" x 1-1/8") in foyer, living room, dining room and solarium.

#### APPLIANCE PACKAGE

- 18 cubic foot front-free refrigerator.
- 30" easy-clean range.
- Built-in dishwasher.
- Washer and dryer.
- All appliances white.

#### SAFETY AND SECURITY

- Gatehouse with a security guard on duty 24 hours a day to receive residents and guests and to monitor suite intrusion alarm systems and garage, recreation centre and other common area access control systems.
- Personally-encoded intrusion alarm system with two-way voice communication to the gatehouse.
- Smoke detectors.
- Heat detectors (connected to the fire annunciation panel).

#### ELECTRICAL SERVICE AND FIXTURES

- Individual service panel with circuit breakers.
- Copper wiring throughout.
- Pre-wired outlets for cable TV and telephone.
- White receptacles and switches throughout.
- Ceiling light fixtures in foyer and hallways.
- Ceiling light outlet in dining room, bedrooms, and family rooms.

---

Suite Design	Approx. sq.ft	Price
112	1,335	\$278,800

---

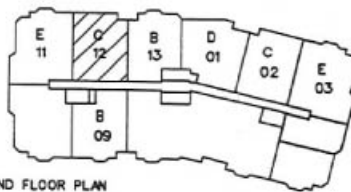
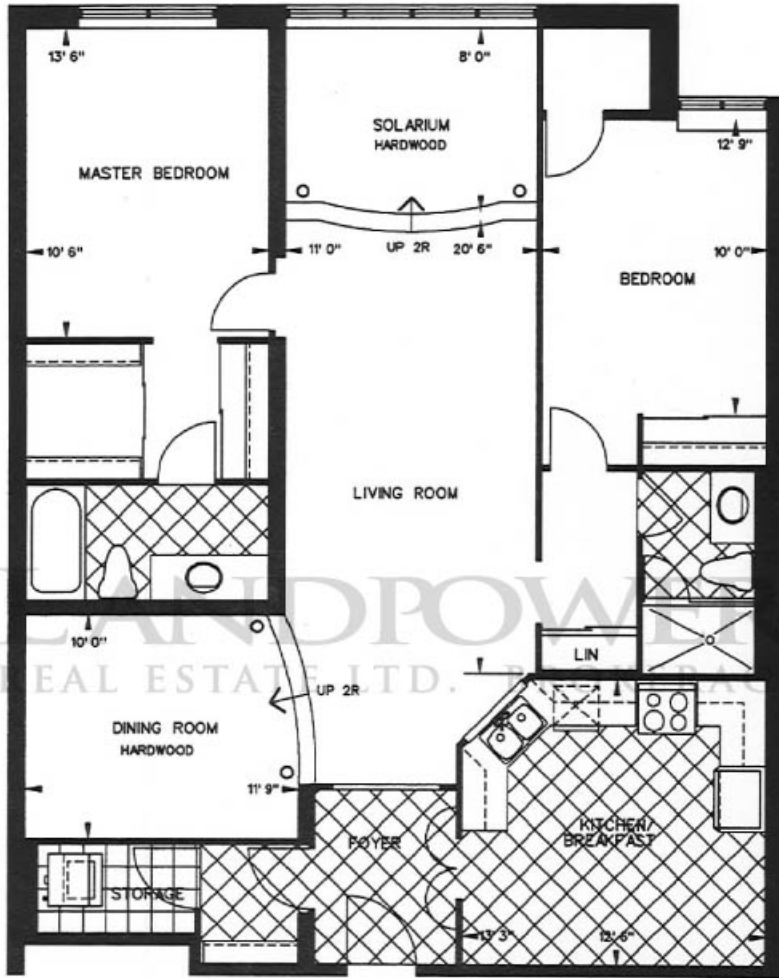
All features and finishes subject to change without notice. E. & O.E.  
\* Availability determined by suite design.







# SUITES 112



GROUND FLOOR PLAN

**TRIDEL**<sup>®</sup>  
TAM O'SHANTER  
*Highlands*



## SUITE FEATURES & FINISHES

### Suite 113

#### TOWER

- Exterior Stucco, pre-finished aluminium window frames and tinted windows.
- Innovative architectural design.
- Elegant designer finishing details in corridors and suite entrance doorways.
- Four well-appointed elevators.
- Computerized security card system for convenient access to common areas.
- Garbage compactor and recycling facilities.

#### RECREATION FACILITIES

The Tam O'Shanter Highlands recreation centre offers the perfect blend of a private country club and a modern fitness spa. All rooms are luxuriously decorated and furnished for your comfort, and totally equipped for your pleasure.

- Indoor swimming pool with sun deck.
- Indoor whirlpool.
- Exercise room with multi-purpose gym and fitness equipment.
- "His & Hers" change rooms with saunas.
- Multi-purpose room with wet bar, kitchen and audiovisual equipment for casual and formal entertaining.
- Card room suitable for Ma-Jong, Bridge or Euchre, complete with table and chairs.
- On site property management office.

#### Other Facilities Includes :

- Extensively landscaped ground with walkways, seating areas, gazebo, soft plantings, and all bordered by a 5-foot decorative perimeter fence to create a private oasis.
- Two-fully furnished guest suites to accommodate your overnight guests (available at a nominal charge).

#### RESIDENTS' PARKING

- Underground parking garage door controlled by personally encoded remote-control transmitter.
- Closed-circuit cameras throughout the garage area, with two-way voice communication with the gatehouse, for surveillance and access monitoring.
- Parabolic mirrors for greater visibility of pedestrians and vehicles.
- Ventilated and protected by fire sprinkler system for safety and protection.

#### UNIQUE INTERIOR FINISHES FOR SUITE 113

- Hardwood strip flooring (1/2" x 1-3/4") in living room, dining room and solarium.
- Four inch halogen pot lights in living room, master bedroom and second bedroom.
- Upgraded light fixtures in foyer and dining room.
- Eleven foot ceiling height throughout suite.
- Upgraded baseboard (5-3/4") throughout suite.
- Window coverings in solarium, master bedroom and second bedroom.
- Clear mirror and frameless closet sliders in foyer, master bedroom and second bedroom.
- Five inch cornice moulding in foyer, living room, dining room and solarium.
- Columns in living room and solarium.
- Interior walls painted in foyer, living room, dining room, bedrooms and solarium with quality latex paint.
- All doors and trim painted with semi-gloss paint.
- Golden Sunshine Limestone flooring in foyer.
- Cultured marble window sills.
- Privacy locks on all doors.\*
- Recessed medicine cabinets in main and ensuite bathrooms.\*
- Exhaust fans in all bathrooms vented to outside.



## SUITE FEATURES & FINISHES

### Suite 113

#### KITCHENS

- Custom designed Tridel "Signature Series" cabinets, with 41" in height uppers.
- Ceramic backsplash.
- Upgraded light fixtures.
- Upgraded Price Pfister pull out chrome faucet.
- Bi-parting french door (standard height).
- Interior walls painted with quality latex paint.

#### BATHROOMS

- Interior walls painted with quality latex paint.
- Golden Sunshine Limestone floor in main bathroom.

#### APPLIANCE PACKAGE

- 18 cubic foot front-free refrigerator.
- 30" easy-clean range.
- Built-in dishwasher.
- Washer and dryer.
- All appliances white.

#### SAFETY AND SECURITY

- Gatehouse with a security guard on duty 24 hours a day to receive residents and guests and to monitor suite intrusion alarm systems and garage, recreation centre and other common area access control systems.
- Personally-encoded intrusion alarm system with two-way voice communication to the gatehouse.
- Smoke detectors.
- Heat detectors (connected to the fire annunciation panel).

#### ELECTRICAL SERVICE AND FIXTURES

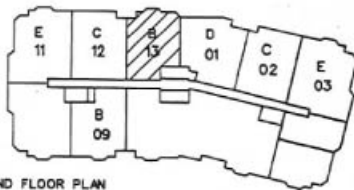
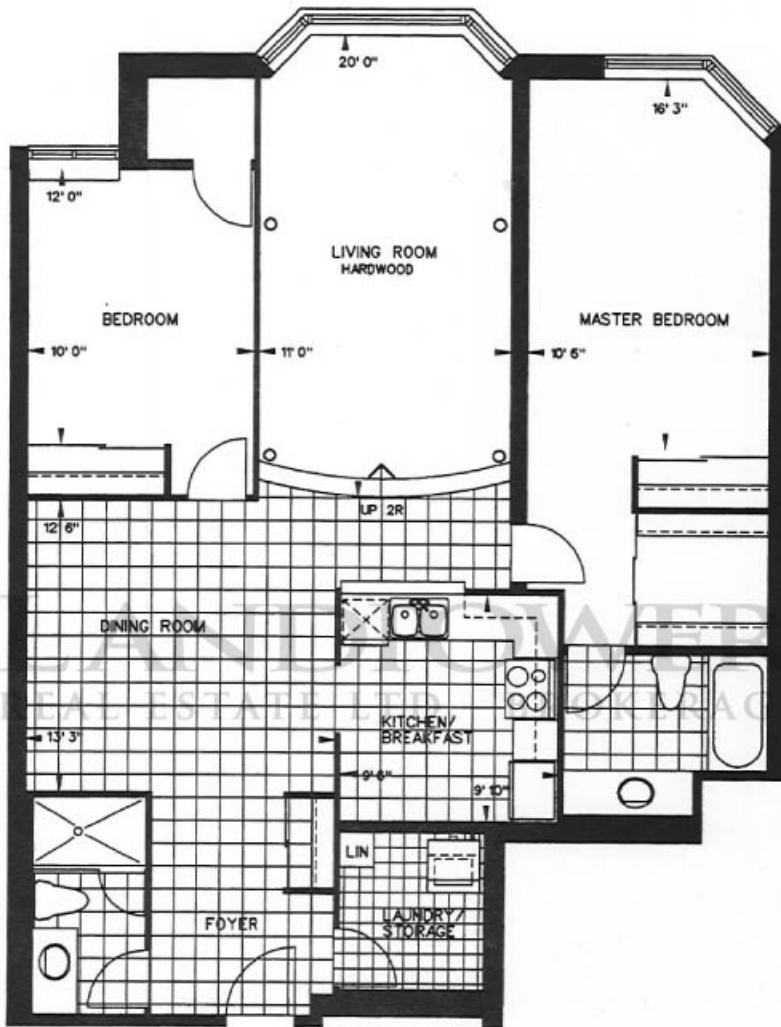
- Individual service panel with circuit breakers.
- Copper wiring throughout.
- Pre-wired outlets for cable TV and telephone.
- White receptacles and switches throughout.
- Ceiling light fixtures in foyer and hallways.
- Ceiling light outlet in dining room, bedrooms, and family rooms.

Suite Design	Approx. sq.ft	Price
113	1,262	\$258,800

All features and finishes subject to change without notice. E. & O.E.  
\* Availability determined by suite design.



# SUITES 113



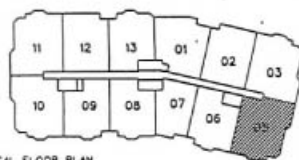
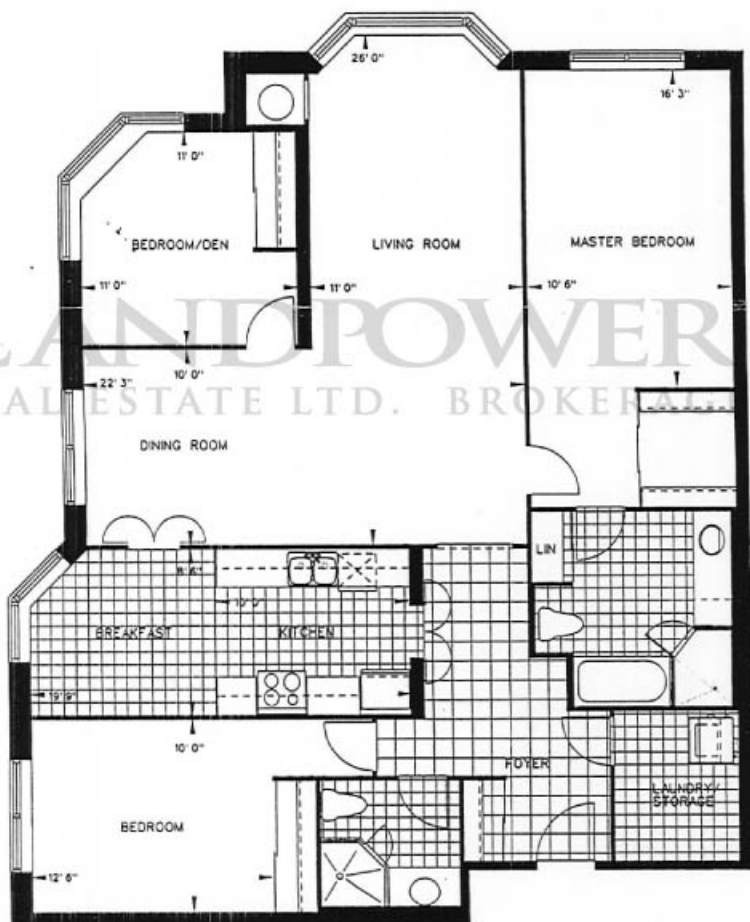
GROUND FLOOR PLAN

**TRIDEL**<sup>®</sup>  
TAM O'SHANTER  
*Highlands*

# TAM O'SHANTER HIGHLANDS

SUITE 05

3 Bedrooms  
2 Bathrooms



TYPICAL FLOOR PLAN

**TRIDEL**®

*[Signature]* 95/12/4  
Purchaser Acknowledgement: Date

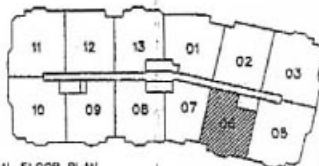
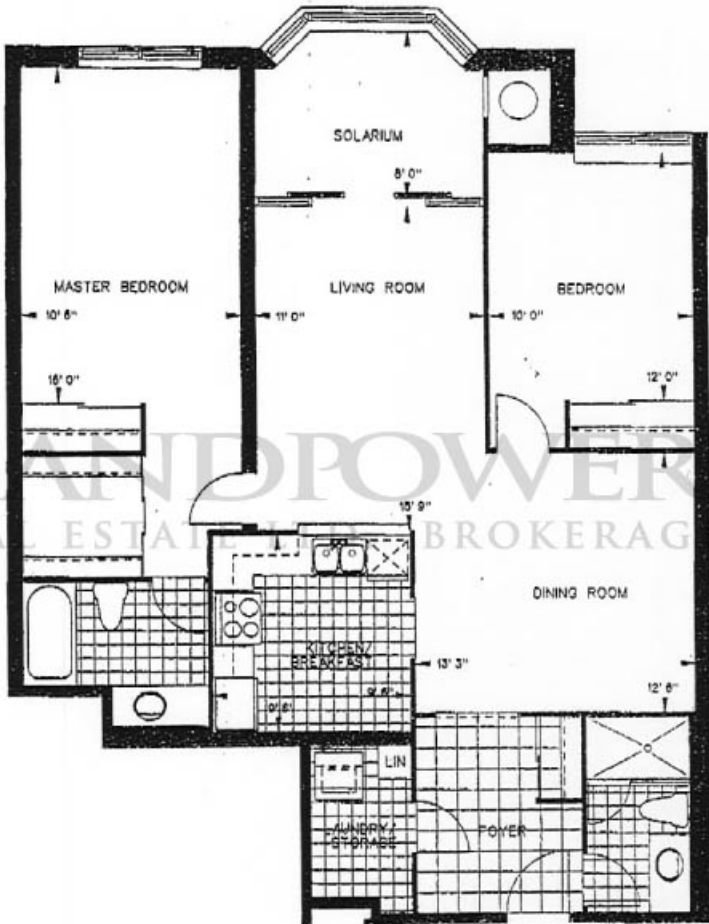
(Municipal) No. 1205  
Level 11 Unit No. 04

Dimensions and specifications subject to change  
Window sizes may vary slightly landscaping and  
paving areas subject to change F.L.P.

# TAM O'SHANTER HIGHLANDS

SUITE 06

- 2 Bedrooms
- 2 Bathrooms
- Solarium



TYPICAL FLOOR PLAN

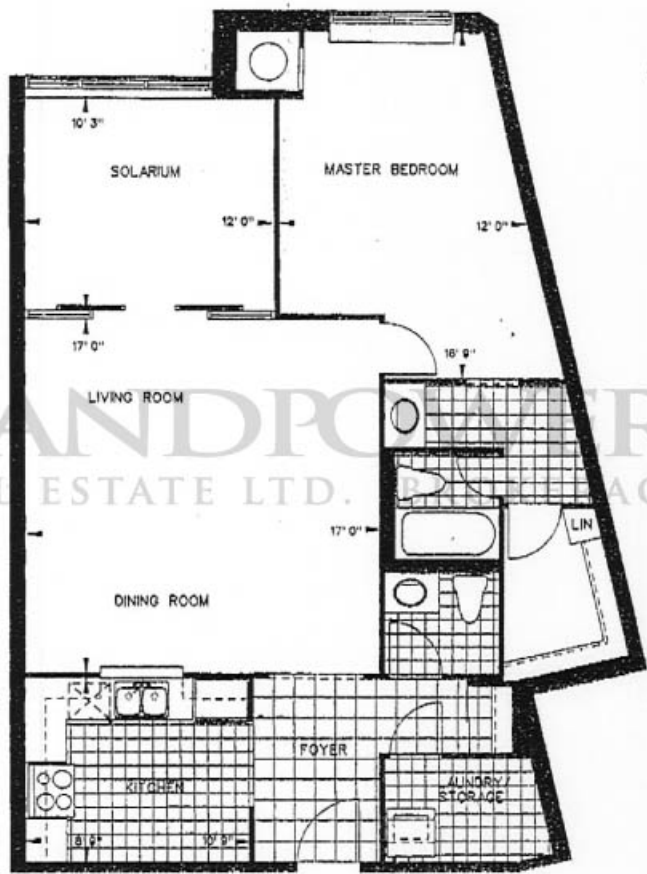
## TRIDEL®

Dimensions and specifications subject to change.  
Window sizes may vary slightly. Landscaping and  
patio areas subject to change E & O. F.

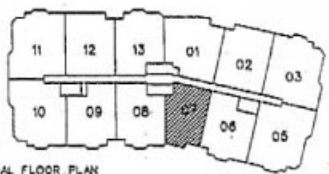
# TAM O'SHANTER HIGHLANDS

## SUITE 07

- 1 Bedrooms
- 1 Bathrooms
- Solarium



LANDPOWER  
REAL ESTATE LTD. BROKER



TYPICAL FLOOR PLAN

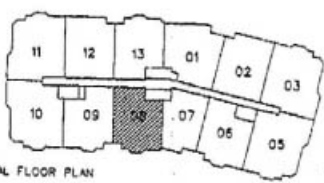
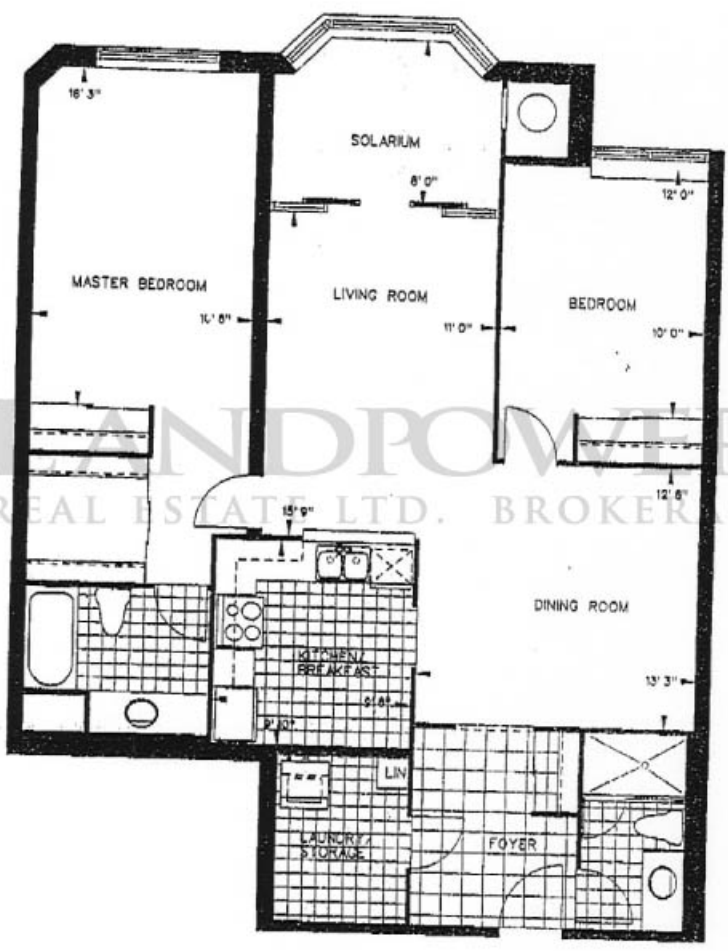
# TRIDEL®

Dimensions and specifications subject to change.  
Window sizes may vary slightly. Landscaping on  
patio areas subject to change E. & C. C.

# TAM O'SHANTER HIGHLANDS

## SUITE 08

- 2 Bedrooms
- 2 Bathrooms
- Solarium



TYPICAL FLOOR PLAN

# TRIDEL®

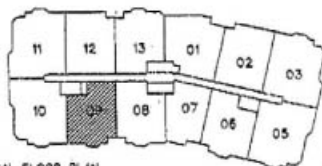
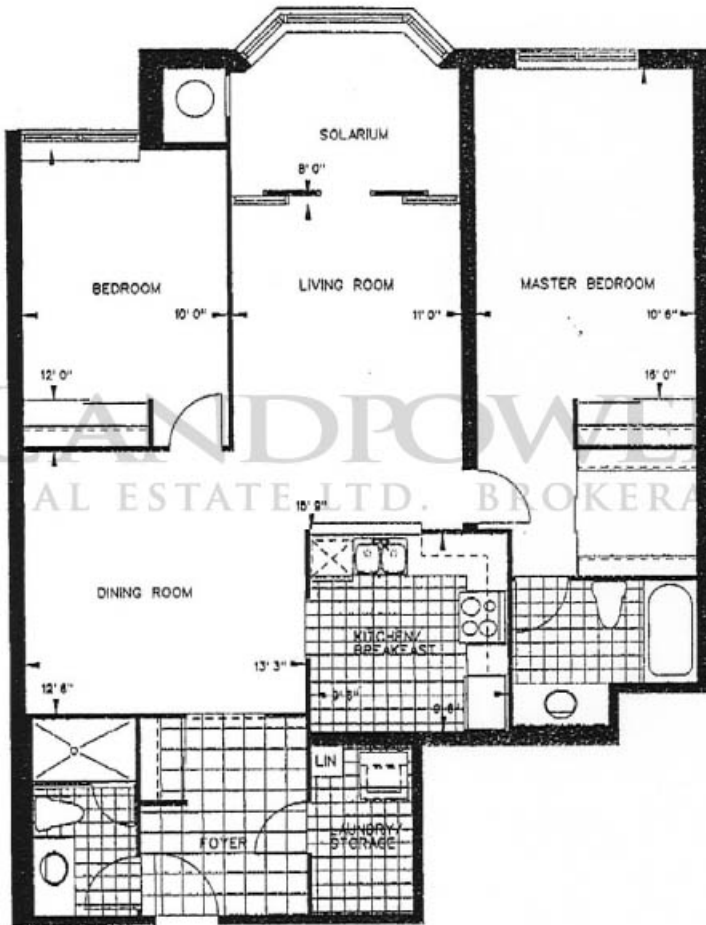
Dimensions and specifications subject to change.  
 Window sizes may vary slightly. Landscaping and  
 patio areas subject to chance P & P.



# TAM O'SHANTER HIGHLANDS

## SUITE 09

- 2 Bedrooms
- 2 Bathrooms
- Solarium



TYPICAL FLOOR PLAN

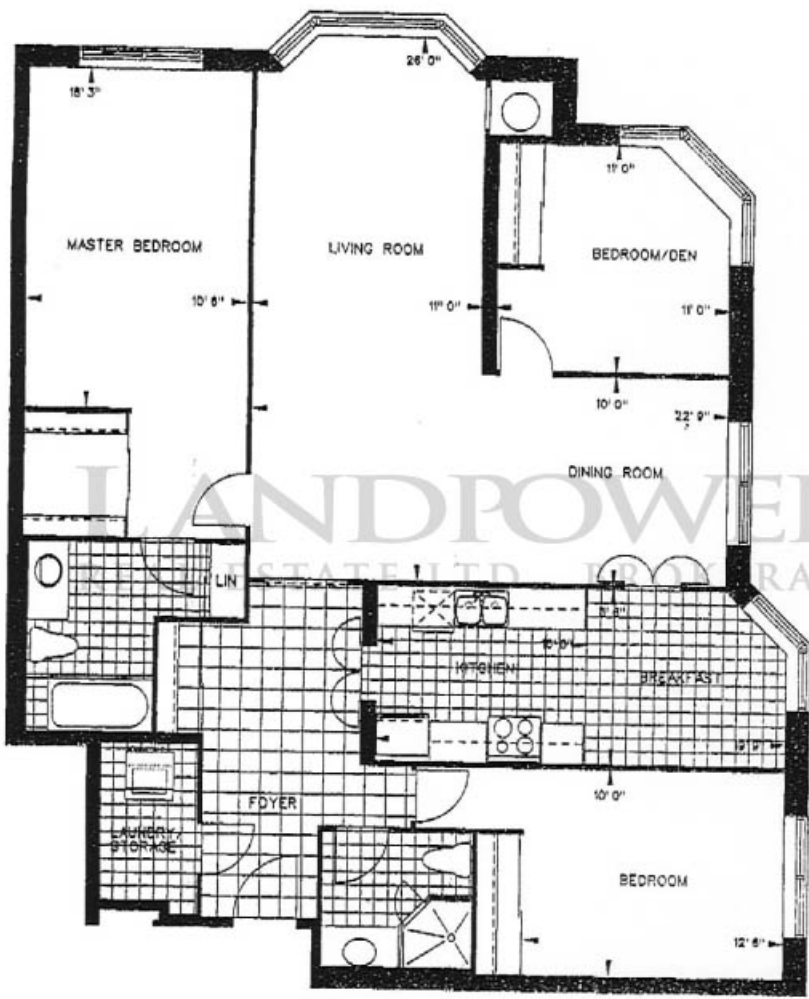
**TRIDEL**®

Dimensions and specifications subject to change.  
Window sizes may vary slightly. Landscaping and  
patio areas subject to change E. & O. E.

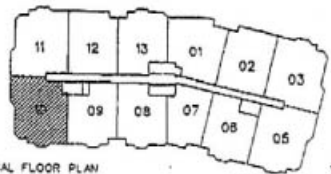
# TAM O'SHANTER HIGHLANDS

SUITE 10

3 Bedrooms  
2 Bathrooms



LANDPOWER  
ESTATE LTD. IRVING



TYPICAL FLOOR PLAN

## TRIDEL®

Dimensions and specifications subject to change  
Window sizes may vary slightly Landscaping and  
patio areas subject to change E. & O. E.

## PROJECT FEATURES

### TOWER

- Exterior Stucco, pre-finished aluminium window frames and tinted windows.
- Innovative architectural design.
- Elegant designer finishing details in corridors and suite entrance doorways.
- Four well-appointed elevators.
- Computerized security card system for convenient access to common areas.
- Garbage compactor and recycling facilities.

### RECREATION FACILITIES

The Tam O'Shanter Highlands recreation centre offers the perfect blend of a private country club and a modern fitness spa. All rooms are luxuriously decorated and furnished for your comfort, and totally equipped for your pleasure.

- Indoor swimming pool with sun deck.
- Indoor whirlpool.
- Exercise room with multi-purpose gym and fitness equipment.
- "His & Hers" change rooms with saunas.
- Multi-purpose room with wet bar, kitchen and audiovisual equipment, for casual and formal entertaining.
- Card room suitable for Ma-Jong, Bridge or Euchre, complete with table and chairs.
- On site property management office.

### Other Facilities Includes :

- Extensively landscaped grounds with walkways, seating areas, gazebo, soft plantings, and all bordered by a 5-foot decorative perimeter fence to create a private oasis.
- Two-fully furnished guest suites to accommodate your overnight guests (available at a nominal charge).

### RESIDENTS PARKING

- Underground parking garage door controlled by personally encoded remote-control transmitter.
- Closed-circuit cameras throughout the garage area, with two-way voice communication with the gatehouse, for surveillance and access monitoring.
- Parabolic mirrors for greater visibility of pedestrians and vehicles.
- Ventilated and protected by fire sprinkler for safety and protection.

## SUITES FEATURES & FINISHES

### INTERIOR FINISHES

- White stippled ceilings in all areas except the kitchen, laundry area and bathrooms which are smooth and painted semi-gloss off-white.
- Interior walls painted off-white with quality latex paint (kitchens, bathrooms and all woodwork and trim painted with semi-gloss paint).
- Distinctive panelled interior doors with polished brass-finish hardware.
- French doors to solarium.
- Colonial baseboards throughout all areas except washrooms.
- Foyer closet, with mirrored sliding doors\*.
- Cultured marble window sills.

### FLOOR COVERINGS

- Marble tile \*\* in foyer.
- Ceramic floor tile\*\* in kitchen, washrooms, and laundry/storage areas.
- Plush 40-oz broadloom\*\* with foam underpad in living room, dining room, family room\*, and bedrooms.

## SUITES FEATURES & FINISHES

### KITCHENS

- Custom-quality European-style cabinets and countertops\*\*.
- Double stainless-steel sinks with single-lever faucet and vegetable spray.
- Ceramic tiles backsplash\*\*.
- Built-in high-capacity hood fan, vented to outside.
- Cove lighting.

### BATHROOMS

- Integrated basin and cultured marble countertops\*\*.
- Single-lever chrome faucets to all vanity sinks.
- Strip lighting over full-width vanity mirrors.
- Recessed medicine cabinets\* in main and ensuite bathrooms.
- Exhaust fans in all bathrooms vented to outside.
- Ceramic tiles for floors and shower walls\*\*.
- Clear glass shower stalls\* with chrome frames.
- Pressure-balance mixing valve in tubs and showers.
- White bathroom fixtures throughout.
- Privacy locks on all doors.

### APPLIANCE PACKAGE

- 18 cubic foot Frost-free refrigerator.
- 30" easy-clean range.
- Built-in dishwasher.
- Washer and dryer.
- All appliances white.

### SAFETY AND SECURITY

- Gatehouse with a security guard on duty 24 hours a day to receive residents and guests and to monitor suite intrusion alarm systems and garage, recreation centre and other common area access control systems.
- Personally-encoded intrusion alarm system with two-way voice communication to the gatehouse.
- Smoke detectors.
- Heat detectors (connected to the fire annunciation panel).

### ELECTRICAL SERVICE AND FIXTURES

- Individual service panel with circuit breakers.
- Copper wiring throughout.
- Pre-wired outlets for cable TV and telephone.
- White receptacles and switches throughout.
- Ceiling light fixtures in foyer and hallways.
- Ceiling light outlet in dining room, bedrooms, and family room\*.

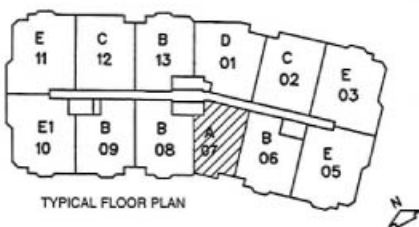
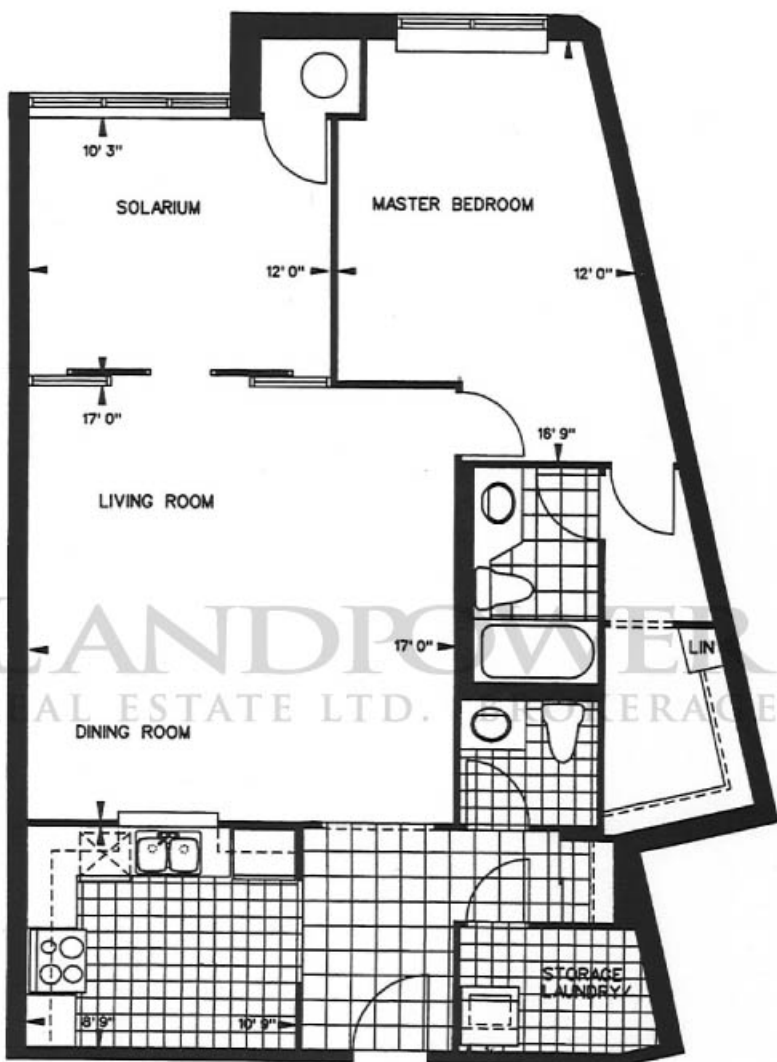
Design Type	Approx. sq.ft	Price
A	1,050	From \$170,800
B	1,262	From \$202,800
C	1,335	From \$226,800
D	1,432	From \$239,800
E	1,575	From \$268,800

\* Availability determined by suite design.

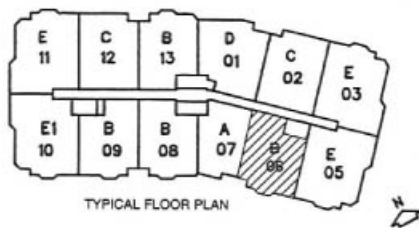
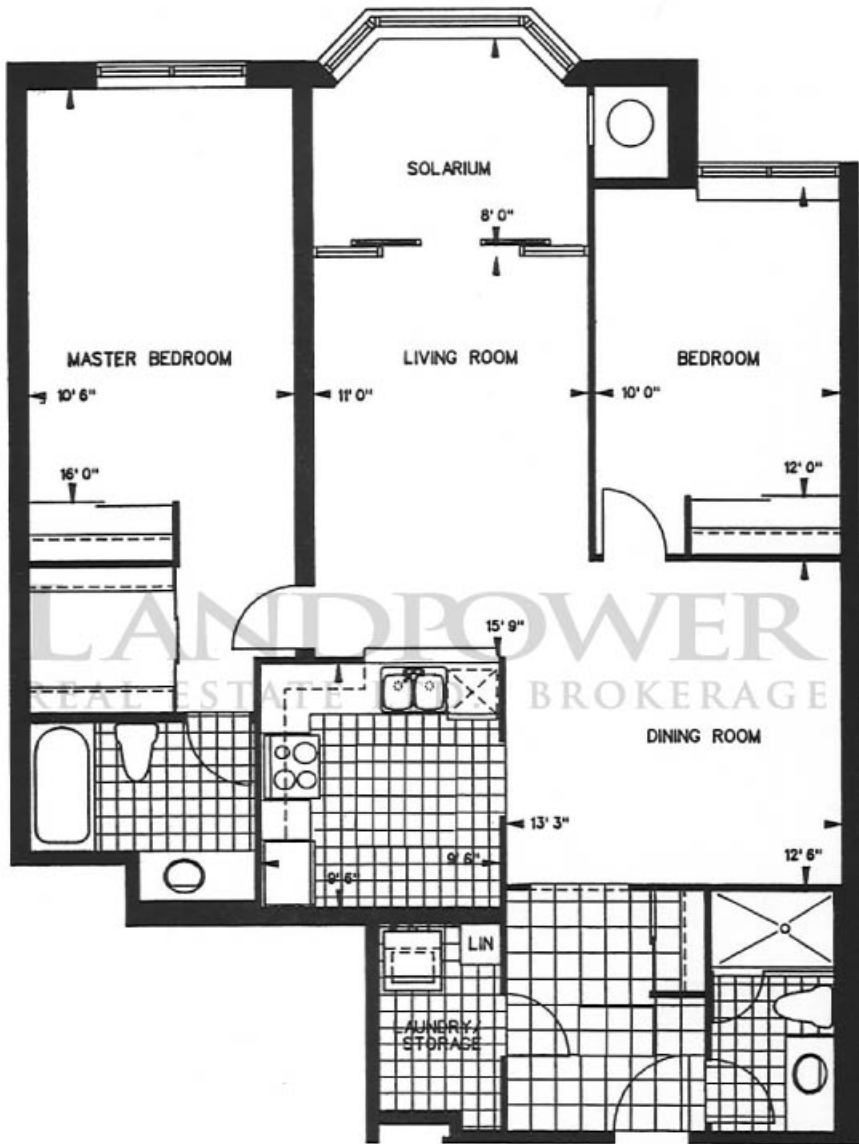
\*\* Choose from a selection of Tridel's samples.

All features and finishes subject to change without notice. E. & O.E.

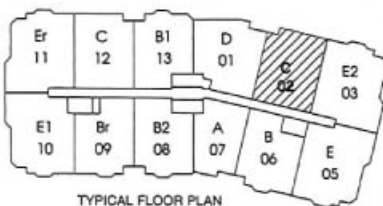
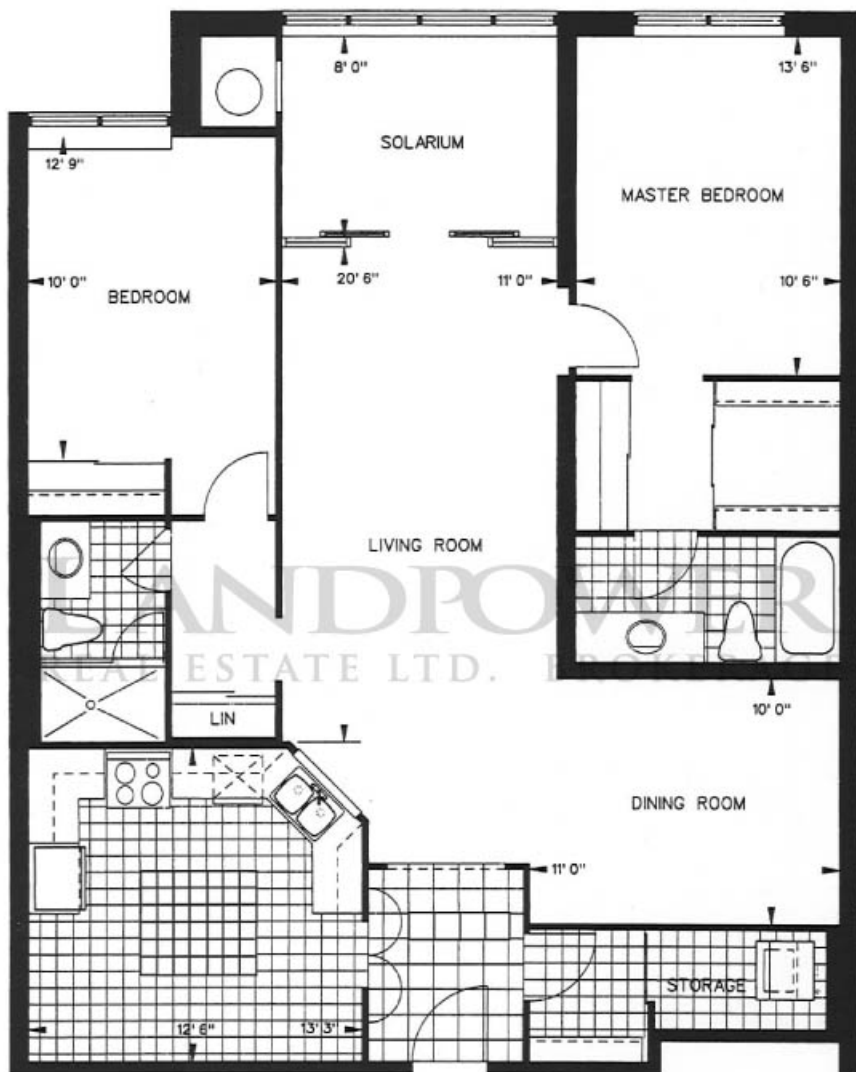
SUITE A



SUITE B

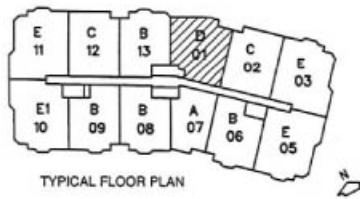
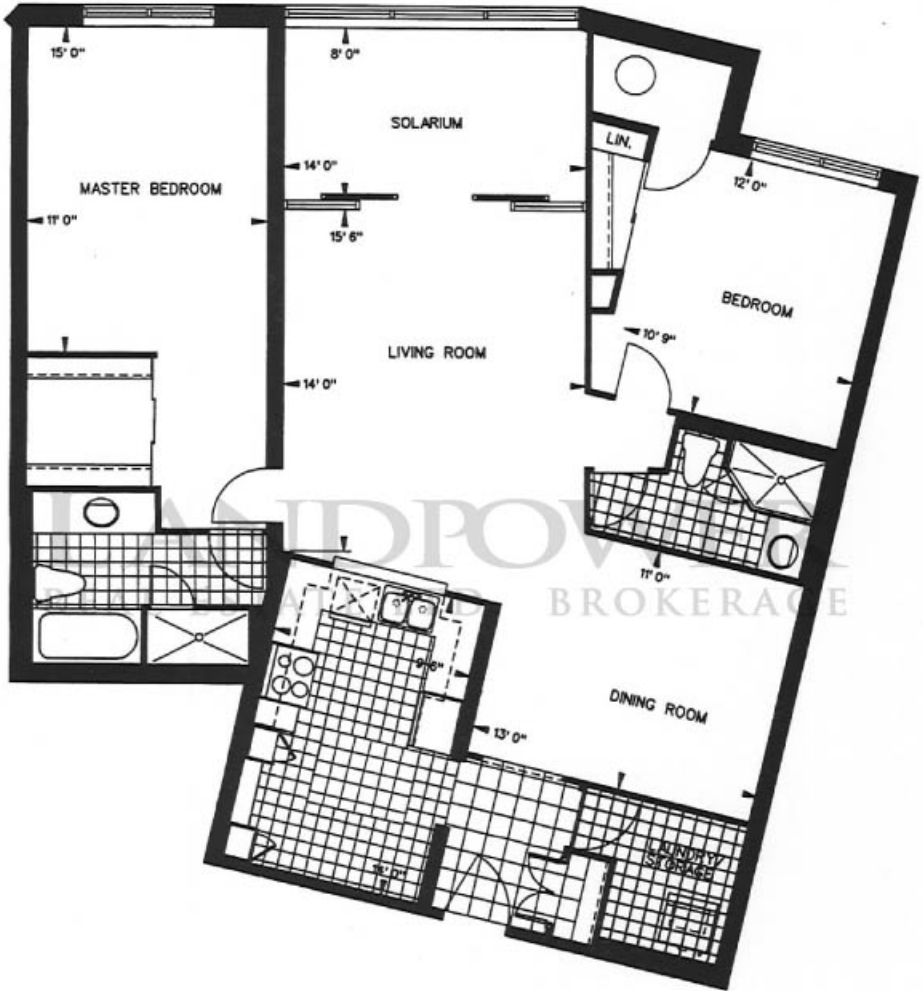


SUITE C



TYPICAL FLOOR PLAN

SUITE D





SUITE E

