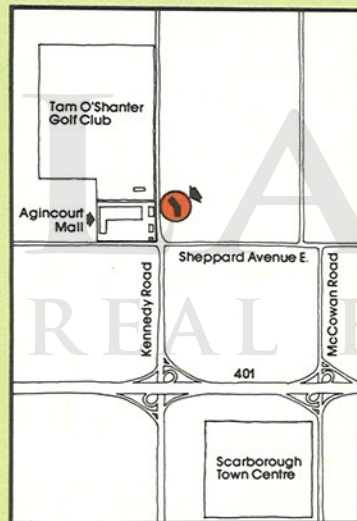


The CAMARGUE

The Rolls-Royce of adult life styles



Location Plan



The CAMARGUE

The Rolls-Royce of adult life styles



The Rex Harrison Suite

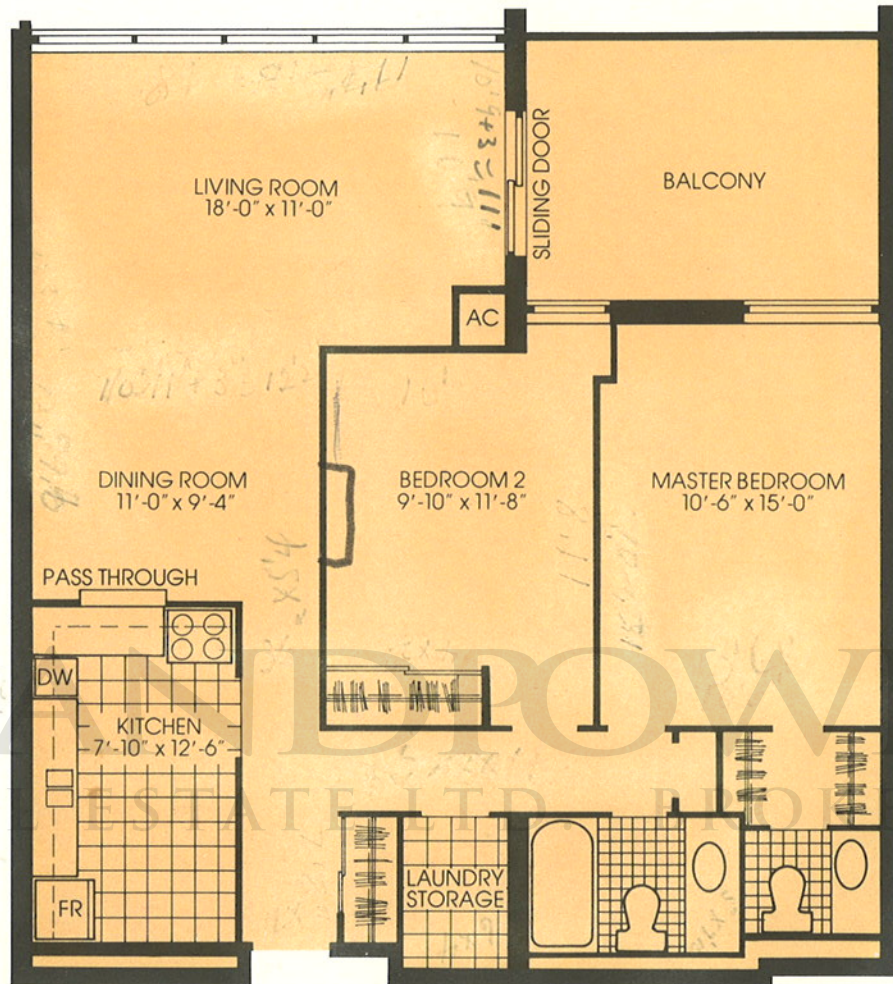
2 Bedroom plus den
Total living space 1270 square feet



All dimensions are approximate

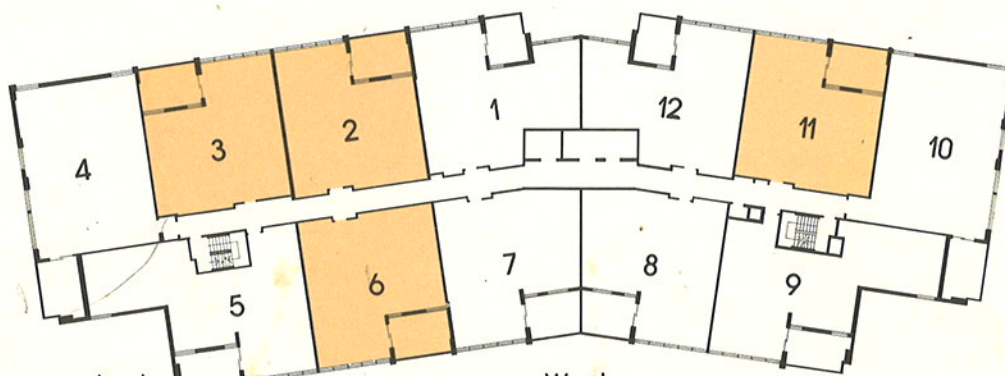
The CAMARGUE

The Rolls-Royce of adult life styles



The
Jeanette MacDonald
Nelson Eddy Suite

2 Bedroom
 Total living space 1095 square feet

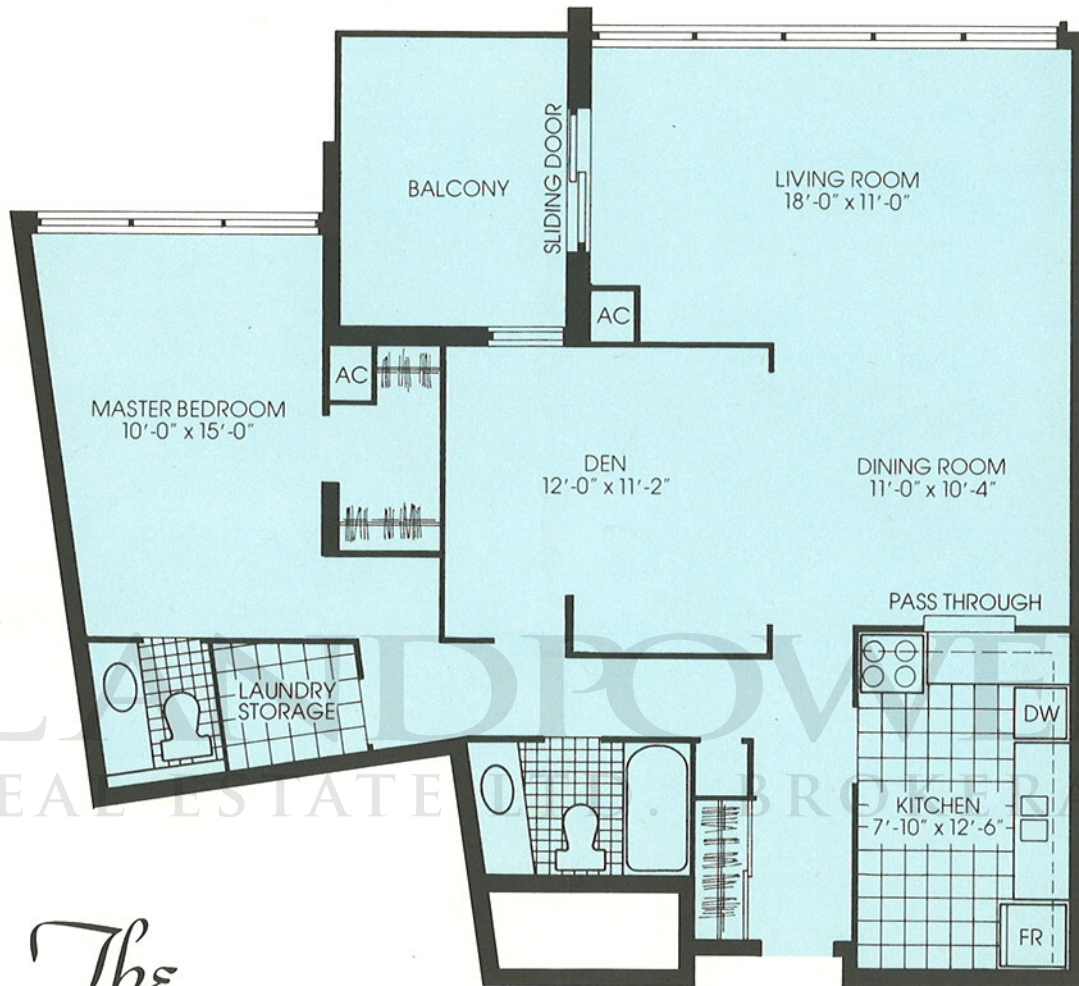


All dimensions are approximate

West

The CAMARGUE

The Rolls-Royce of adult life styles



The Rudolf Valentino Suite

1 Bedroom plus den
Total living space 1102 square feet

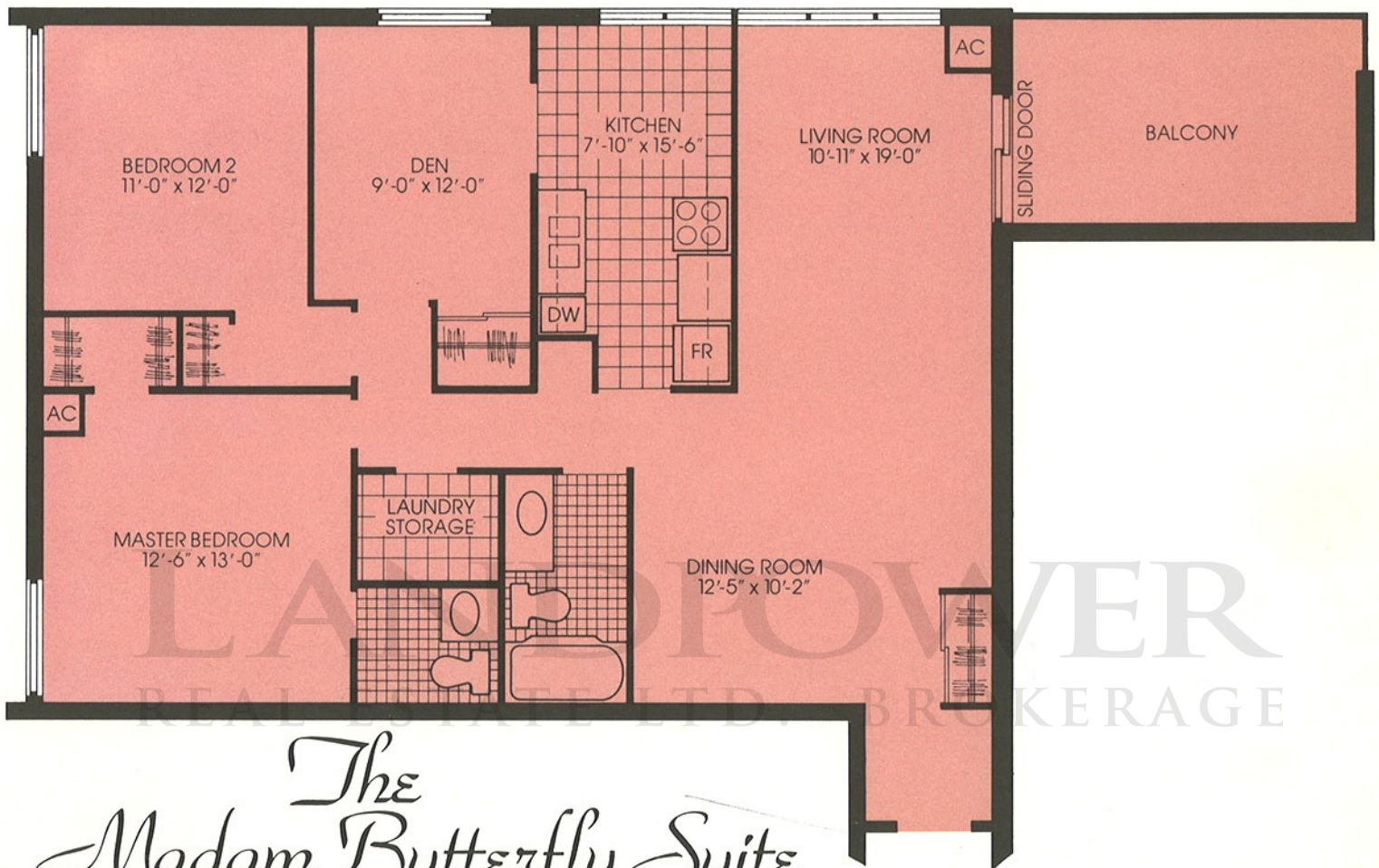


All dimensions are approximate

West

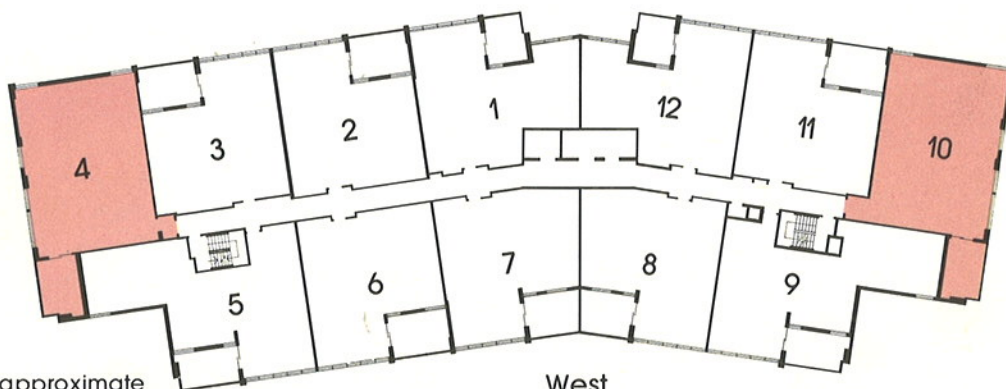
The CAMARGUE

The Rolls-Royce of adult life styles



The Madam Butterfly Suite

2 Bedroom plus den
Total living space 1332 square feet

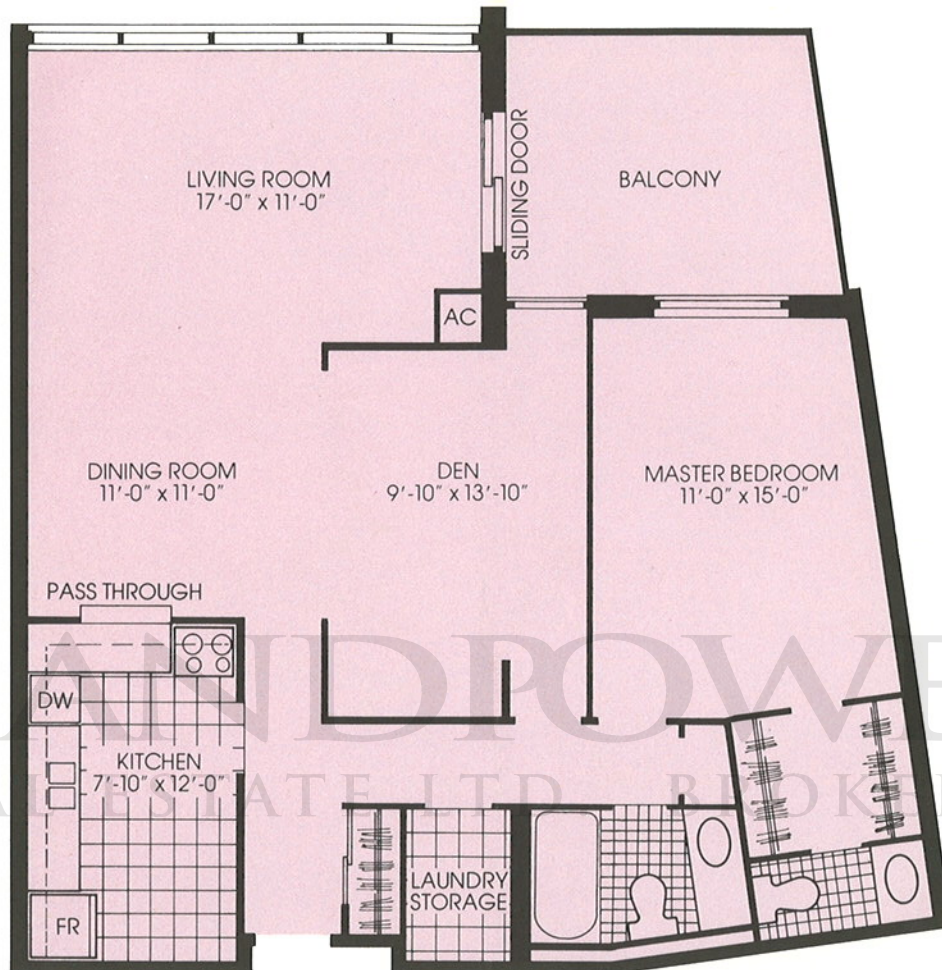


All dimensions are approximate

West

The CAMARGUE

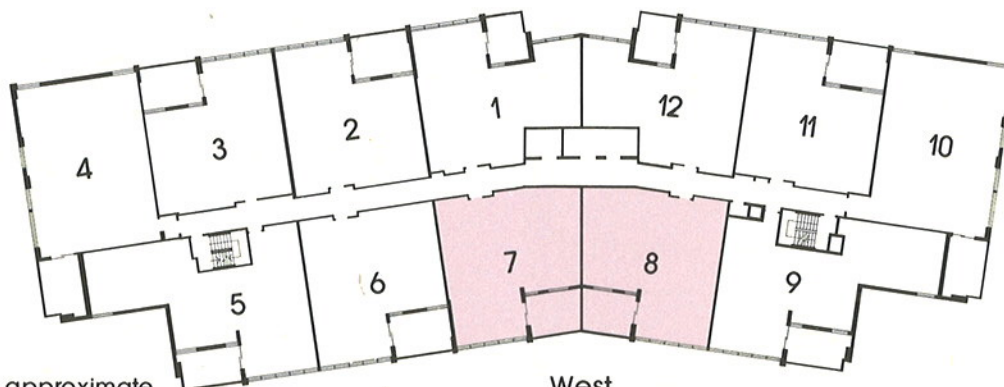
The Rolls-Royce of adult life styles



The Jean Harlow Suite

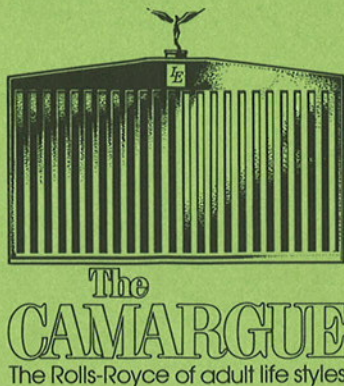
1 Bedroom plus den

Total living space 1086 square feet



All dimensions are approximate

West



PREVIEW PRICES*

Rudolph Valentino 1 Bedroom and Den \$46,500 – \$50,100

Jean Harlow 1 Bedroom and Den \$46,000 – \$49,700

*Jeanette Mac Donald and
Nelson Eddy* 2 full Bedrooms \$47,100 – \$50,800

Rex Harrison 2 Bedrooms and Den \$54,700 – \$58,400

Madame Butterfly 2 Bedrooms and Den \$57,900 – \$61,600

Suite Features

Fully airconditioned / Ensuite laundry room / Ensuite bathroom / Quality broadloom / Automatic washer / Automatic dryer / Admiral refrigerator / Admiral automatic range / Admiral dishwasher /

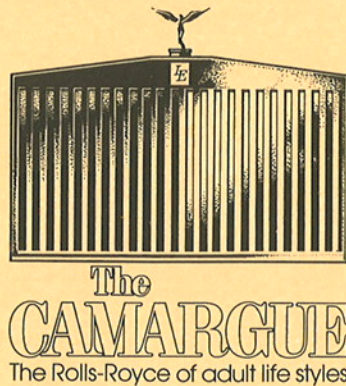
9³/₄% mortgages available

Office Hours:

Weekly; 11a.m. – 9p.m. Weekends 11a.m. – 6p.m.

Phone. Heidi Epkenhaus – Fran Sullivan 292-9722

*Prices subject to change without notice



Some of the quality features with a Camargue home

- Air conditioned suite with individual control
- Private laundry room in every suite
- Extra washroom off master bedroom
- Quality broadloom with a choice of colour and style
- Sliding glass door to balcony patio
- All suites are fully decorated
- Electric fixtures installed throughout
- Prewired for telephone and cable television
- Ceramic tile on bathroom floors and tub enclosures
- Well lit underground parking with extra spaces
- Additional storage lockers on lower level
- Security "Enterphone" lobby paging system

PLUS

Five major appliances

Automatic electric range / Frost free refrigerator / Automatic clothes washer / Automatic clothes dryer / Built in dishwasher

PLUS

A "Country club" recreation centre

- Roof garden with sun deck, shuffleboard and badminton
- Outside pool with sun tan deck and lounge area
- Fully equipped gym and health centre
- Ladies and mens saunas, change rooms, showers
- Equipped social and game rooms for parties and recreation
- Equipped hobby room for 'do-it-yourself' types and artists

AND MORE

- An entrance lobby that is truly elegant
- A location that is remarkably convenient
- A management philosophy that really works for you
- Typical "Lebovic" attention to quality and workmanship

AND MORE

But please ask our sales representative.