



WOODBINE
BUSINESS CENTRE
8787 Woodbine • Markham • Ontario

LANDPOWER
REAL ESTATE LTD. BROKERAGE



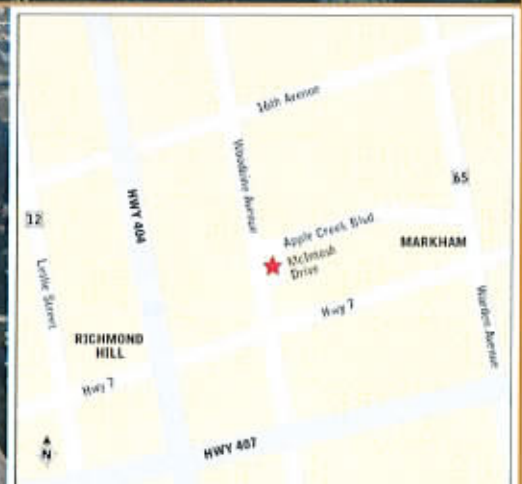


Mady Development Corporation

Markham, Ontario

WOODBINE BUSINESS CENTRE

MEDICAL, OFFICE, RETAIL AND RESTAURANT CONDOS



8787 Woodbine Avenue

Just north of Highways 7 & 407 at Apple Creek Blvd.

For More Information Contact: Cynthia Lai, FRI/Broker Direct Line: 416-939-8833

Global Link Realty Group Inc. Tel: 905-475-0028 Email: Cynthia@trebnet.com

BROKERS PROTECTED

PRICE LIST

8787 Woodbine Ave. - Woodbine Business Centre

BLDG	LVL #	UNIT #	NET SQ.FT.	\$/SQ.FT.	SALE PRICE
A	1	1	978	\$ 300.00	\$ 293,400.00
A	1	2	1080	\$ 300.00	\$ 324,000.00
A	1	3	1005	\$ 285.00	\$ 286,425.00
A	1	4	1040	\$ 285.00	\$ 296,400.00
A	1	5	1005	\$ 300.00	\$ 301,500.00
A	1	6	1078	\$ 300.00	\$ 323,400.00
A	1	7	988	\$ 300.00	\$ 296,400.00
B	1	8	988	\$ 300.00	\$ 296,400.00
B	1	9	1078	\$ 300.00	\$ 323,400.00
B	1	10	1005	\$ 285.00	\$ 286,425.00
B	1	11	1040	\$ 285.00	\$ 296,400.00
B	1	12	1005	\$ 285.00	\$ 286,425.00
B	1	13	1080	\$ 300.00	\$ 324,000.00
B	1	14	978	\$ 300.00	\$ 293,400.00
C	1	15	1044	\$ 420.00	\$ 438,480.00
C	1	16	1059	\$ 420.00	\$ 444,780.00
C	1	17	1026	\$ 370.00	\$ 379,620.00
C	1	18	1040	\$ 370.00	\$ 384,800.00
C	1	19	1101	\$ 370.00	\$ 407,370.00
C	1	20	1101	\$ 370.00	\$ 407,370.00
C	1	21	1108	\$ 370.00	\$ 409,960.00
C	1	22	1506	\$ 350.00	\$ 527,100.00
C	1	23	1368	\$ 350.00	\$ 478,800.00
C	1	24	1036	\$ 350.00	\$ 362,600.00
C	1	25	1120	\$ 350.00	\$ 392,000.00
C	1	26	1120	\$ 370.00	\$ 414,400.00
C	1	27	1058	\$ 370.00	\$ 391,460.00
C	1	28	1075	\$ 350.00	\$ 376,250.00
C	1	29	1160	\$ 370.00	\$ 429,200.00
C	1	30	589	\$ 370.00	\$ 217,930.00
A	2	1	970	\$ 230.00	\$ 223,100.00
A	2	2	1072	\$ 230.00	\$ 246,560.00
A	2	3	997	\$ 230.00	\$ 229,310.00
A	2	4	1032	\$ 220.00	\$ 227,040.00
A	2	5	997	\$ 220.00	\$ 219,340.00
A	2	6	1070	\$ 230.00	\$ 246,100.00
A	2	7	980	\$ 230.00	\$ 225,400.00
B	2	8	980	\$ 230.00	\$ 225,400.00
B	2	9	1070	\$ 230.00	\$ 246,100.00
B	2	10	997	\$ 220.00	\$ 219,340.00
B	2	11	1032	\$ 220.00	\$ 227,040.00
B	2	12	997	\$ 220.00	\$ 219,340.00
B	2	13	1080	\$ 230.00	\$ 248,400.00
B	2	14	988	\$ 230.00	\$ 227,240.00
C	2	15	1232	\$ 230.00	\$ 283,360.00
C	2	16	591	\$ 230.00	\$ 135,930.00
C	2	17	533	\$ 220.00	\$ 117,260.00
C	2	18	582	\$ 230.00	\$ 133,860.00
C	2	19	583	\$ 235.00	\$ 137,005.00

LANDPROVER
REAL ESTATE BROKERAGE

PRICE LIST

8787 Woodbine Ave. - Woodbine Business Centre

BLDG	LVL #	UNIT #	NET SQ.FT.	\$/SQ.FT.	SALE PRICE
C	2	20	594	\$ 235.00	\$ 139,590.00
C	2	21	742	\$ 225.00	\$ 166,950.00
C	2	22	1186	\$ 235.00	\$ 278,710.00
C	2	23	555	\$ 235.00	\$ 130,425.00
C	2	24	593	\$ 235.00	\$ 139,355.00
C	2	25	592	\$ 235.00	\$ 139,120.00
C	2	26	570	\$ 235.00	\$ 133,950.00
C	2	27	590	\$ 235.00	\$ 138,650.00
C	2	28	1339	\$ 235.00	\$ 314,665.00
C	2	29	1339	\$ 245.00	\$ 328,055.00
C	2	30	589	\$ 245.00	\$ 144,305.00
C	2	31	499	\$ 245.00	\$ 122,255.00
C	2	32	600	\$ 245.00	\$ 147,000.00
C	2	33	601	\$ 245.00	\$ 147,245.00
C	2	34	889	\$ 245.00	\$ 217,805.00
C	2	35	952	\$ 245.00	\$ 233,240.00
C	2	36	591	\$ 245.00	\$ 144,795.00
C	2	37	590	\$ 245.00	\$ 144,550.00
C	2	38	537	\$ 245.00	\$ 131,565.00
C	2	39	514	\$ 245.00	\$ 125,930.00
C	2	40	1234	\$ 245.00	\$ 302,330.00

23-Jan-07

LANDPOWER
REAL ESTATE LTD. BROKERAGE

**Corner Unit Premium\$5,000(must be sold with at least 2 units)

**Prices are subject to change without notice. E. & O.E.

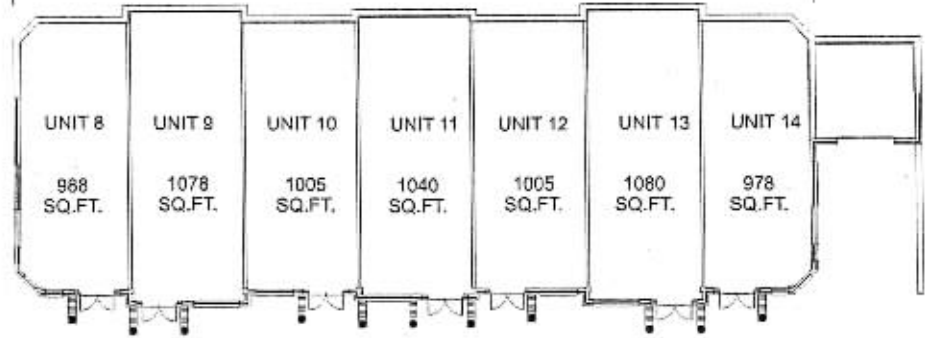
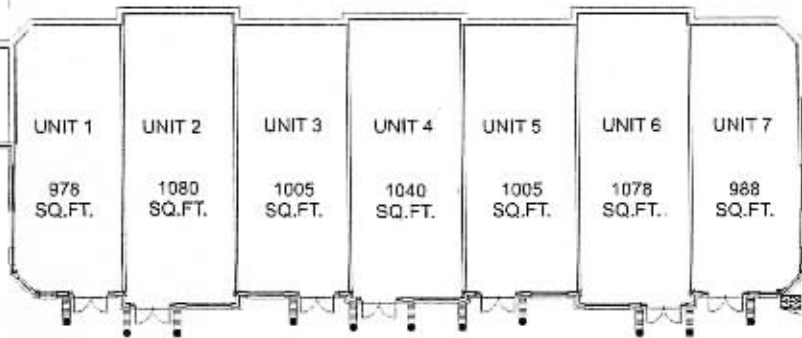
**Acceptance of Offers are subject to Vendor's sole discretion

Exclusive Agent: Cynthia Lai, FRI
Broker/President
Global Link Realty Group Inc.
Direct Line: 416-939-8833
Office: 905-475-0028
E-mail: cynthia@trebnet.com

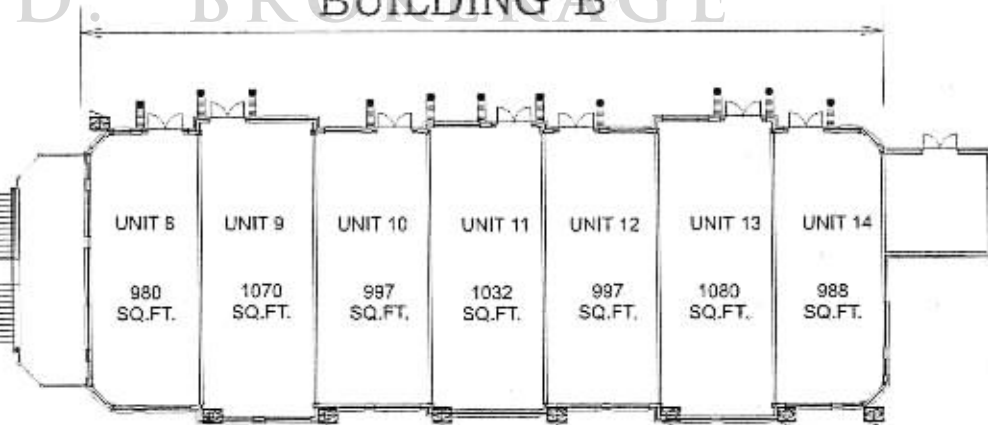
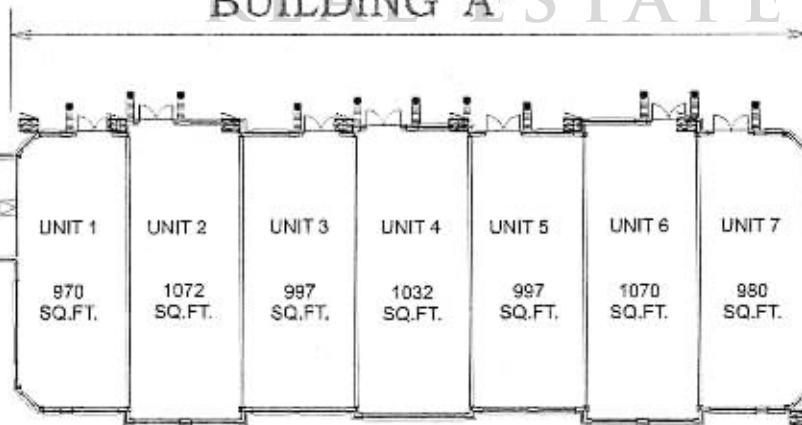
MAIN FLOOR

BUILDING 'A'

BUILDING 'B'



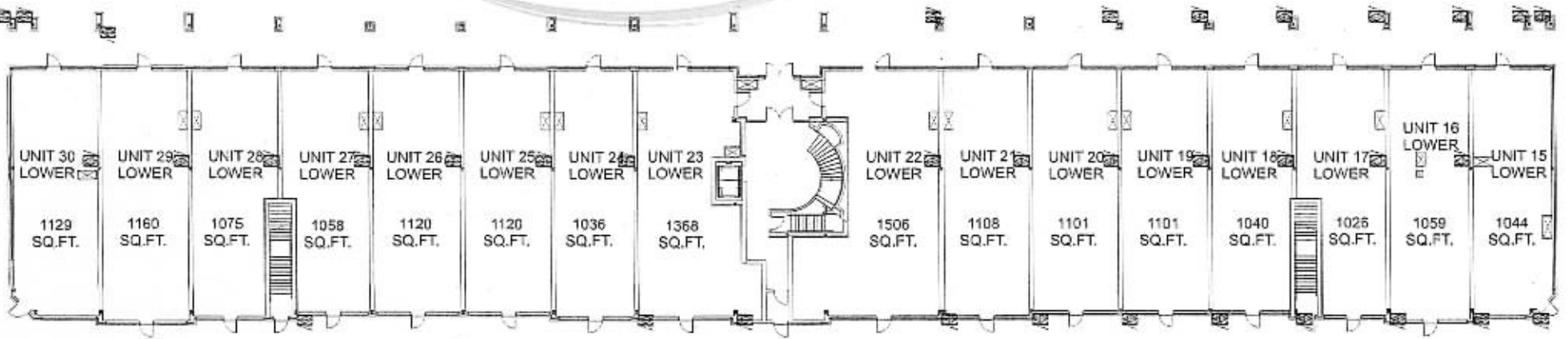
LANDWOODBINE BUSINESS CENTRE
BUILDING 'A' STATE LTD. BR BUILDING 'B' GE



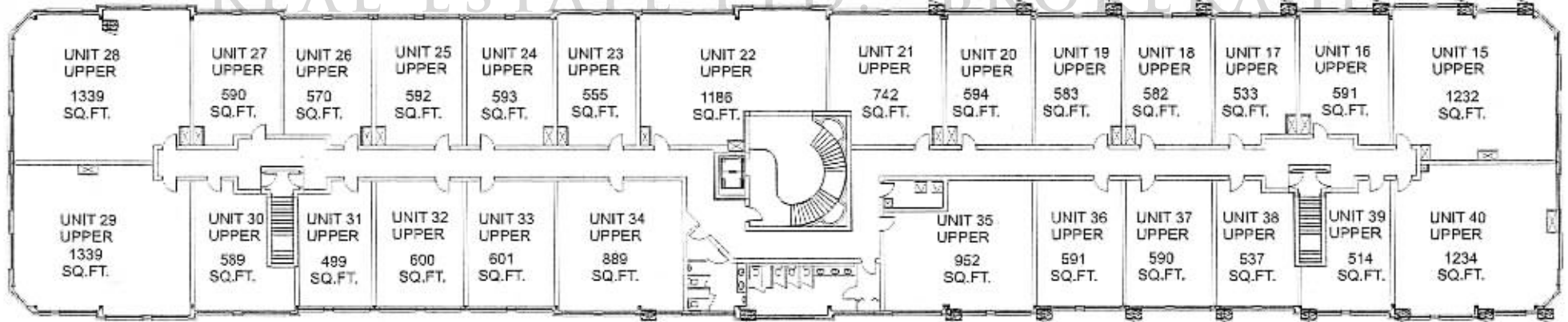
SECOND FLOOR

ALL AREAS APPROXIMATE

MAIN FLOOR BUILDING 'C'



LANDWOODBINE
 BUSINESS CENTRE
 REAL ESTATE LTD. BROKERAGE



SECOND FLOOR BUILDING 'C'

ALL AREAS APPROXIMATE

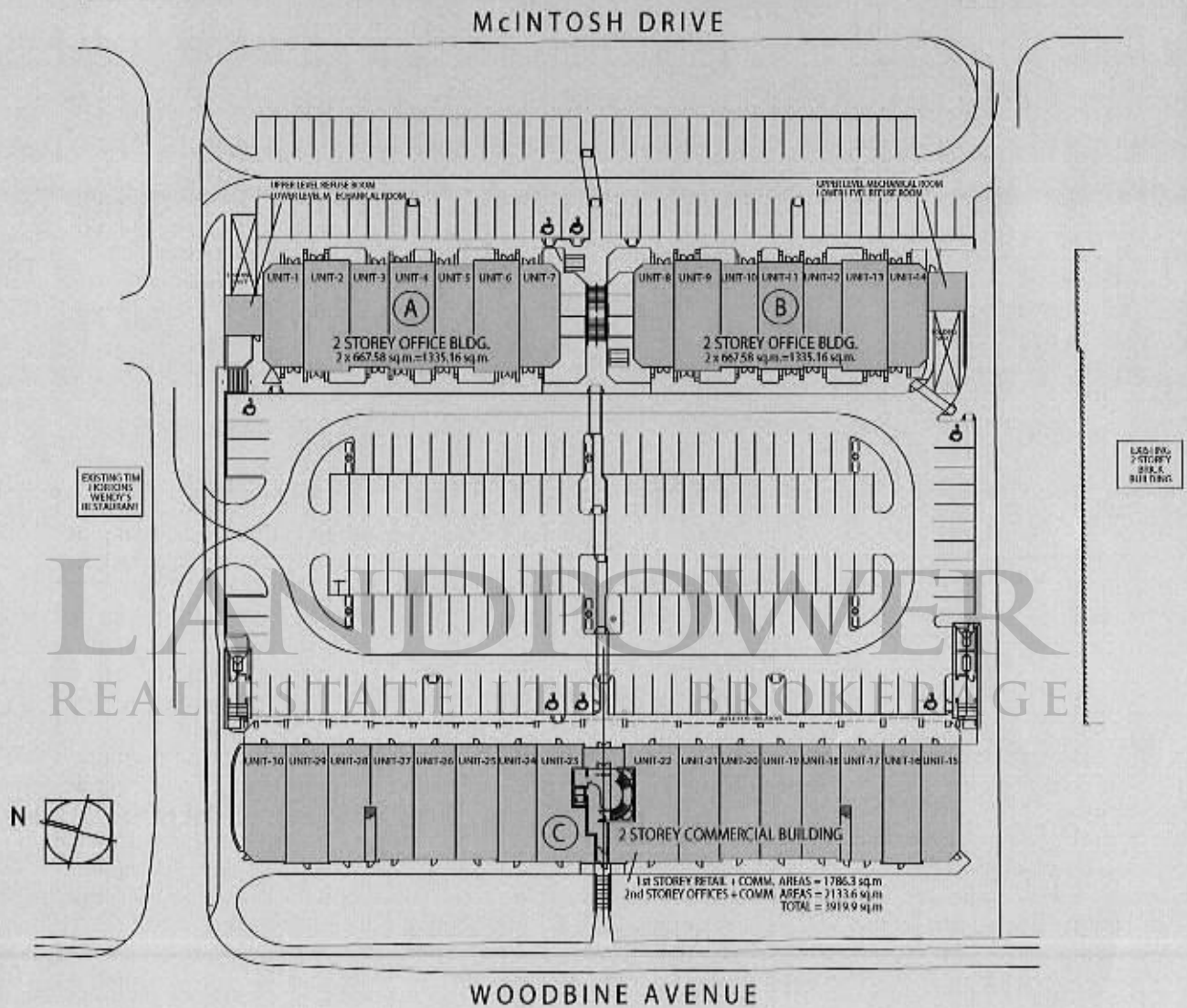


Mady Development Corporation

Markham, Ontario

WOODBINE BUSINESS CENTRE

MEDICAL, OFFICE, RETAIL AND RESTAURANT CONDOS



ZONING: BC – Business Corridor, under by-law 165-80, as amended

PROPOSED DEVELOPMENT: Approximately 65,000 sq.ft. of condominium retail, office, restaurant and medical space in 3 architecturally distinct two storey buildings fronting Woodbine Avenue at Apple Creek Blvd in Markham, ON.

PERMITTED USES: Data processing & related
• Banks & financial institutions • Medical

facilities • Day nurseries and day care centres
• Dry cleaning establishments • Health centres • Indoor recreation establishments
• Offices • Personal service shops • Places of entertainment • Research and training centres
• Restaurants • Fast food restaurants • Take-out restaurants • Service shops • Retail stores
• Commercial schools

RESTRICTIONS: Hamburgers, Coffee & Donuts