

# FEATURES AND FINISHES OF YOUR NEW HOME

---

## BUILDING:

- Iconic precast and glass clad exterior
- Elegant lobby with concierge station
- Existing elevators with custom designed cabs
- Designer selected broadloom in corridors
- Garbage chute system with recycling capability

## COMMON ELEMENTS:

- Fitness auditorium with circuit training and cardio equipment
- Multipurpose recreation lounge with audio/video equipment
- Formal dining room/boardroom with kitchenette/bar
- Management office
- 1 Superintendent's suite built to be purchased by the Condominium

## SUITE FEATURES:

- Laminate plank flooring\* throughout except for bathrooms and laundry area
- Painted slab swing interior doors with painted wood door frames and brushed chrome finished hardware
- Sliding glass partitions where shown on plan
- Mirrored sliding closet doors, where shown in sleeping areas on Schedule "A"
- Provision for telephone outlet in Vendor pre-determined locations
- Provision for cable outlet in Vendor pre-determined locations
- Switched wall outlets in living areas, sleeping area(s) and den (if applicable as per plan)
- Individually controlled seasonal heating and air conditioning
- Combination 1 piece washer/dryer (2 piece stacked unit in "Milan" suite)
- Smoke and heat detector(s) as per Ontario Building Code
- EVC (emergency voice communications) in suite as per Ontario Building Code
- Sprinkler fire protection system

## PRIMARY BATHROOM:

- Vendor's designer selected tile\* floor and tub surround
- White soaker tub
- 2 piece white water closet
- Pressure balance valve for tub/shower faucet
- Wall mounted vanity light fixtures
- European style vanity cabinet\*
- Single lever faucet for vanity sink
- Mirror above sink
- Chrome finished bathroom accessories
- Privacy locks on all bathroom doors
- Exhaust ducted to the exterior

## SECOND BATHROOM (IF APPLICABLE):

- Imported porcelain or ceramic tile\* floor and shower walls
- Separate shower stall, featuring frameless glass panel
- 2 piece white water closet
- Pressure balance valve for shower faucet
- Wall mounted vanity light fixture
- European style vanity cabinet\*
- Single lever faucet for vanity sink
- Vanity width mirror above sink
- Chrome finished bathroom accessories
- Privacy locks on all bathroom doors
- Exhaust ducted to the exterior

## KITCHENS:

- Custom designer cabinetry\* with soft close drawers and doors
- Stone countertops\*
- Appliances comprised of:
  - 2 Burner smooth-top electric cooktop
  - Built-in electric microwave oven with grilling function
  - Fully integrated refrigerator with bottom-mount freezer
  - Fully integrated drawer dishwasher and
  - Overhead stainless steel hood fan
- Single stainless steel sink
- Single lever pull-out faucet

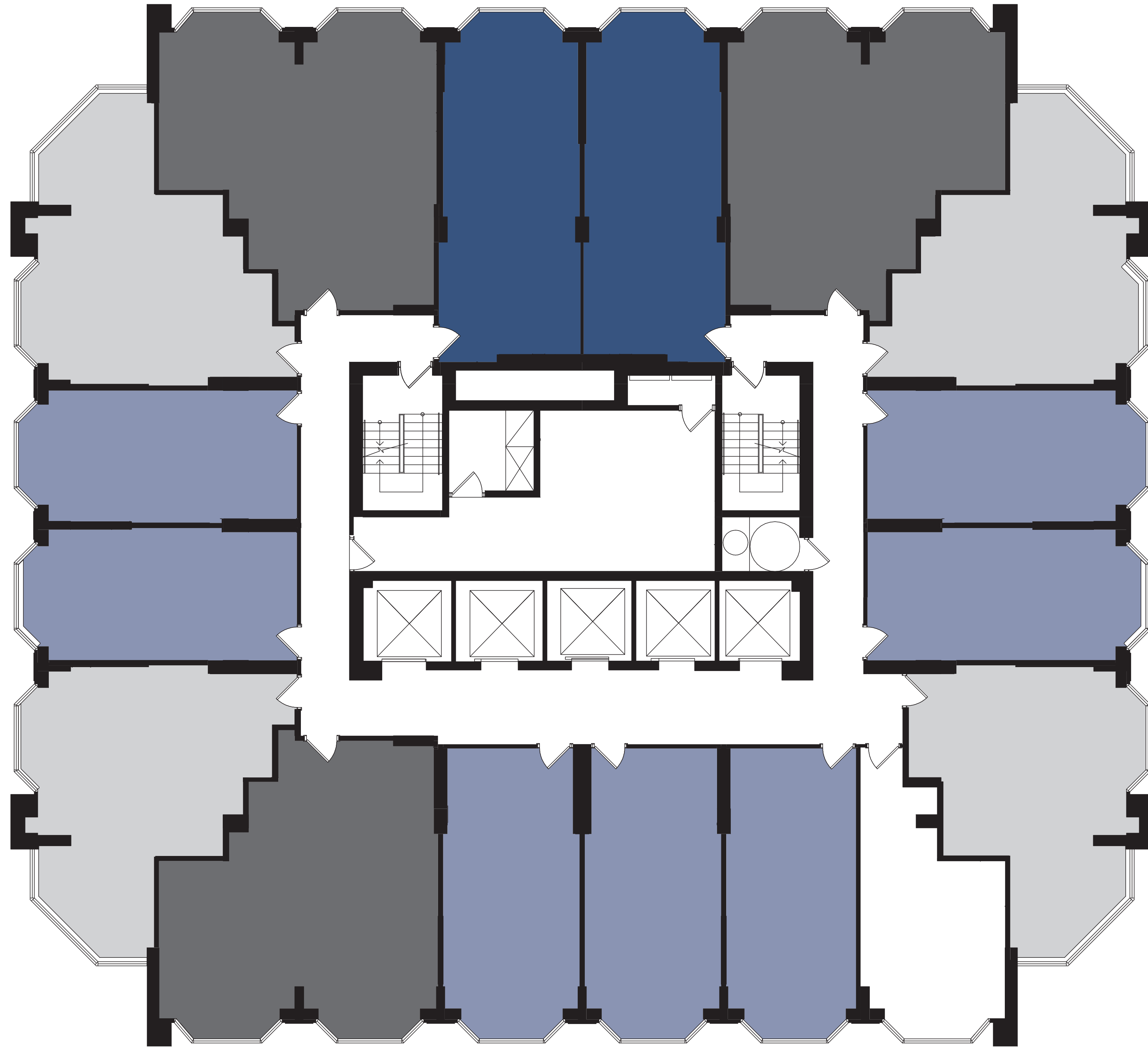
## SAFETY AND SECURITY:

- 24-Hour building security
- Entry phone system
- Personally encoded suite intrusion alarm system connected to concierge station with key pad and suite door contact
- Computer controlled access system provided at main building entry points
- Video cameras for selected zones in underground garage and entry areas
- Fire detection, protection and sprinkler systems as per Ontario Building Code

\* colour and styles for these finishes and features are to be selected from Vendor's standard samples

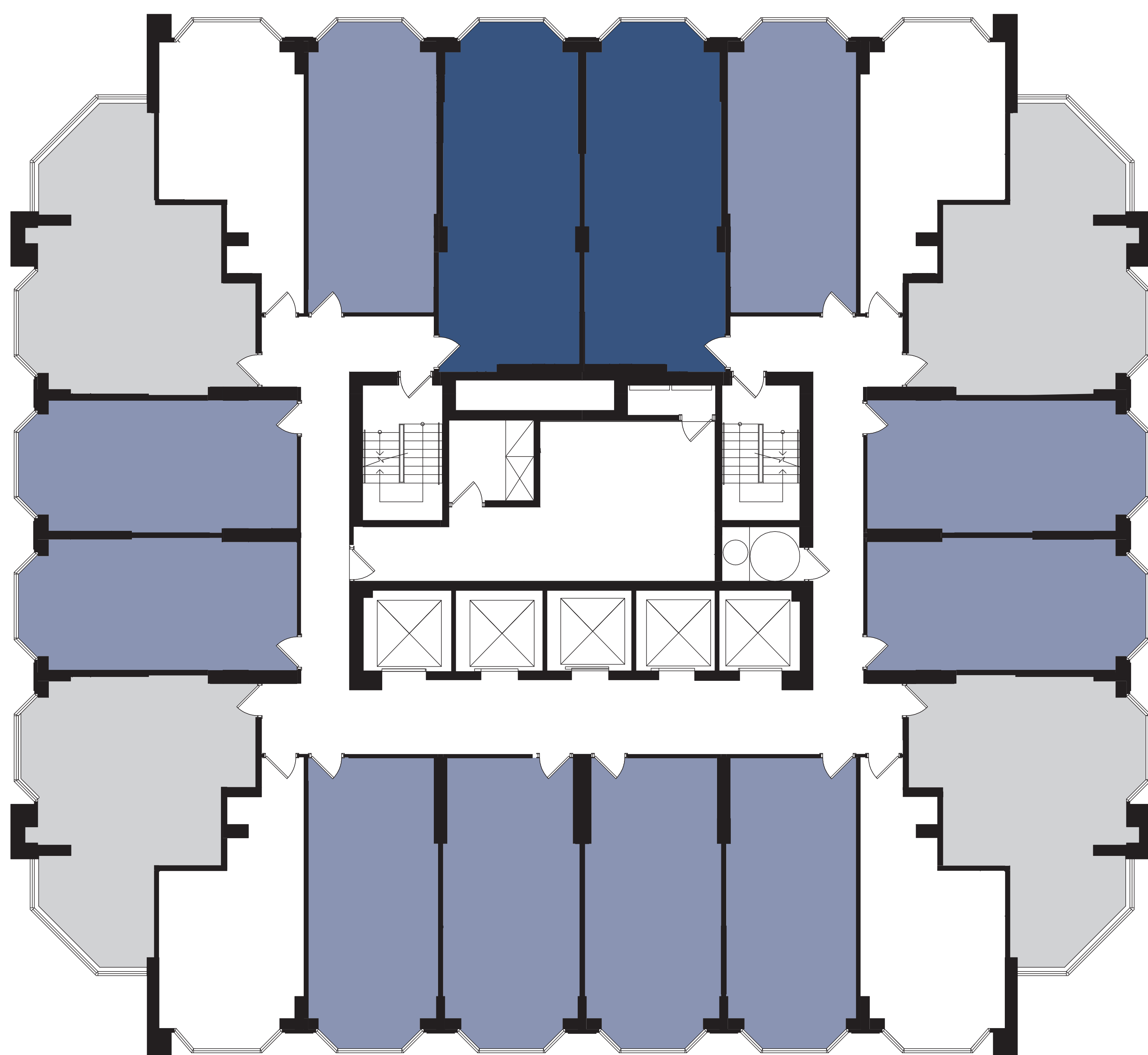
NOTE: Specifications are subject to change without notice. Vendor may substitute materials for those shown in the Plans and Specifications, provided such materials in the sole opinion of the Vendor's consultant are of at least comparable quality. Model suites, displays, marketing materials and Schedule "A"s may include finishes that are upgrades and are not included in the purchase price. These upgrades may be offered at extra cost at time of colour selection or may not be made available. Feature details may vary, subject to conditions in the existing building. Where brand names are specified, the Vendor, in its sole discretion, may substitute with similar product of at least equal quality from another manufacturer. Colour, texture, appearance, etc. of features and finishes installed in the Unit may vary from Vendor's samples as a result of normal manufacturing and installation processes. Appliance locations shown on Schedule "A"s may vary. Only those items designated with an asterisk (\*) may be selected by Purchaser. All dimensions stated herein are approximate only. Presentation Centre display furnishings and decorations are not included.

Errors and omissions are accepted.



## UPPER FLOORS

- THE MANHATTAN
- THE NEW YORK
- THE PARIS
- THE LONDON
- THE MILAN



## LOWER FLOORS

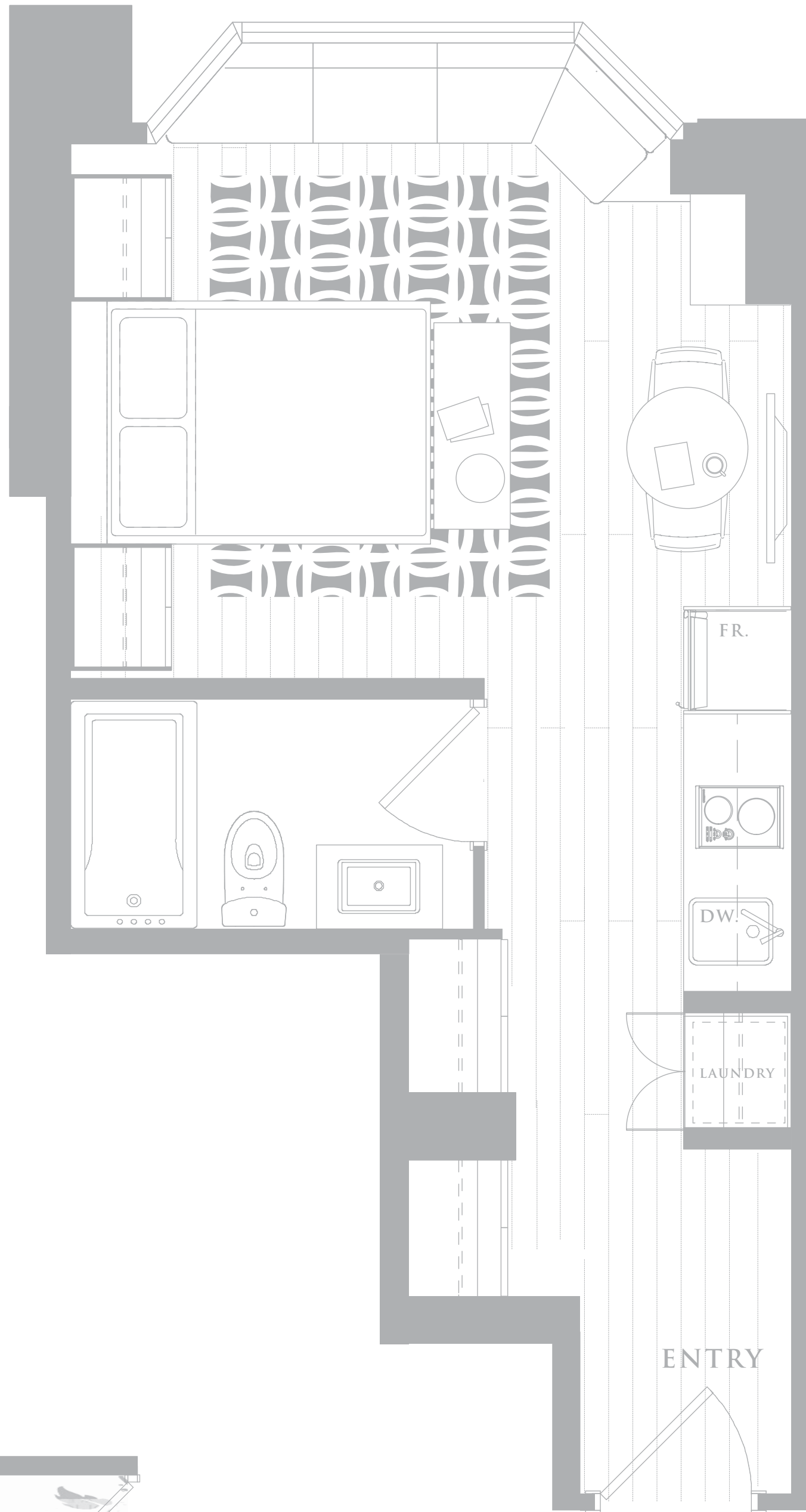


THE NEW RESIDENCES OF  
**YORKVILLE PLAZA**  
 YORKVILLE & AVENUE ROAD

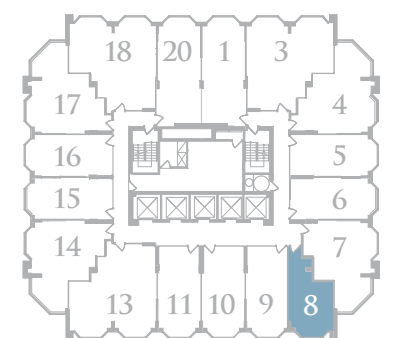


# THE MANHATTAN

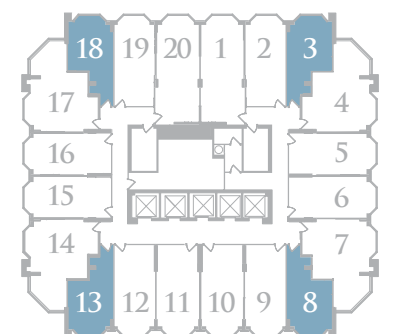
PIED A TERRE  
370 SQ.FT.



UPGRADE OPTIONAL  
SHOWER STALL



UPPER FLOORS  
(11-31)

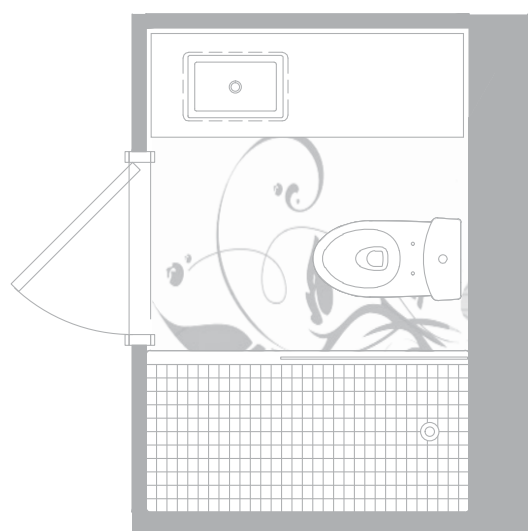
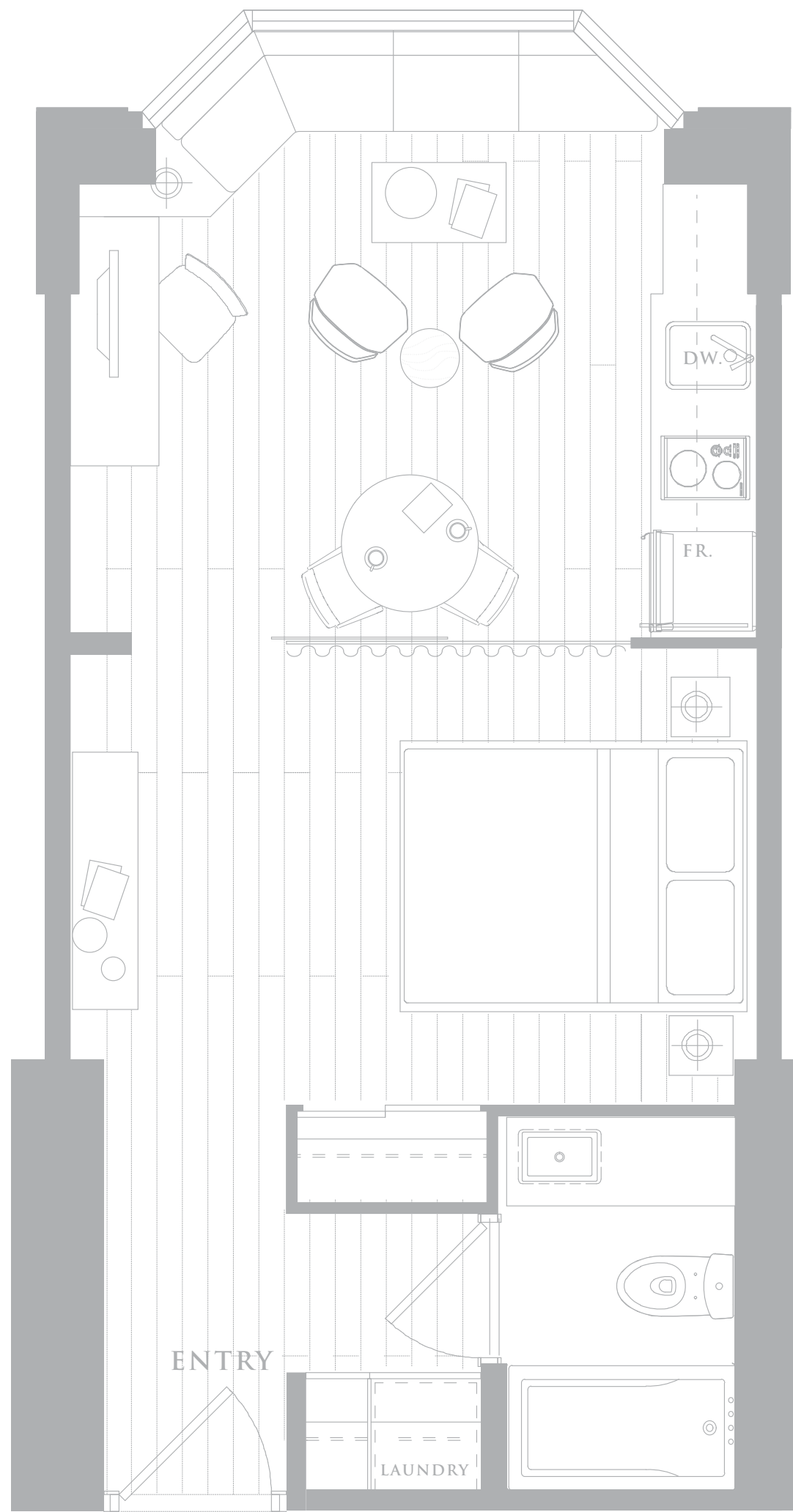


LOWER FLOORS  
(4-10)

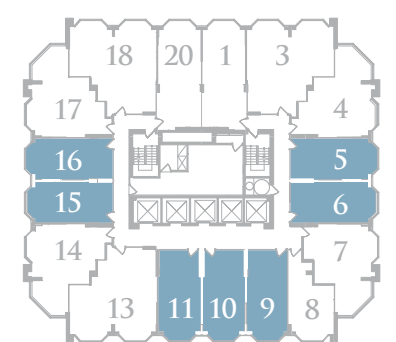


# THE NEW YORK

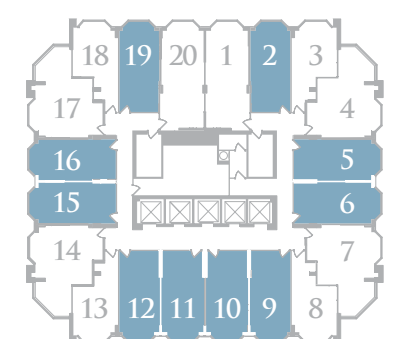
ONE  
430 SQ.FT.



UPGRADE OPTIONAL  
SHOWER STALL



UPPER FLOORS  
(11-31)

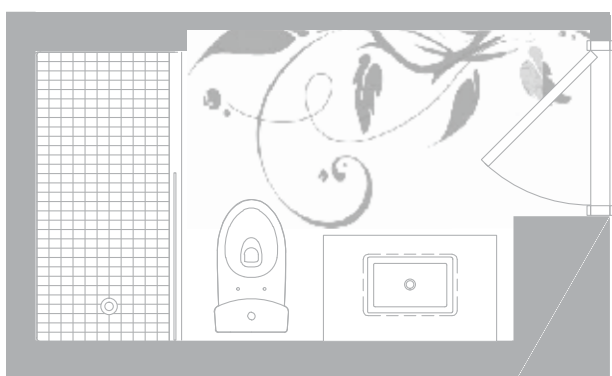
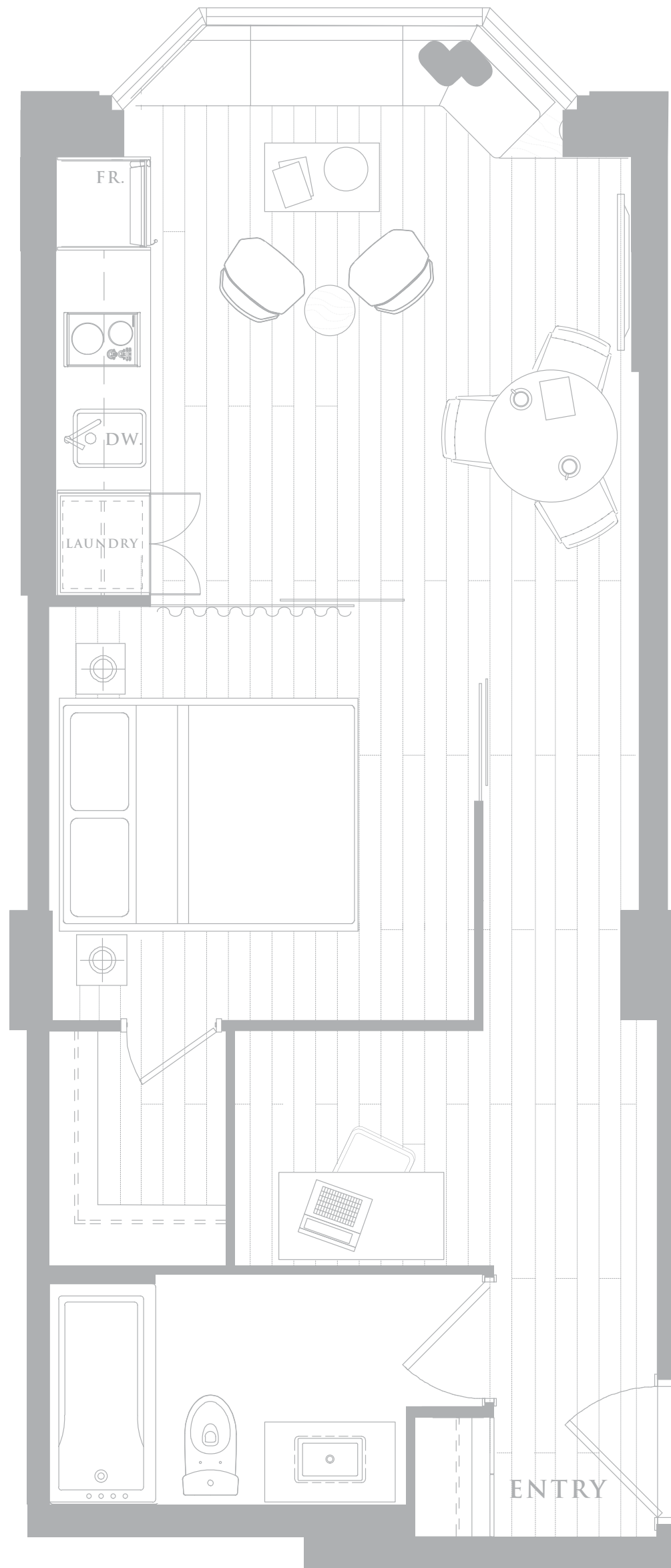


LOWER FLOORS  
(4-10)

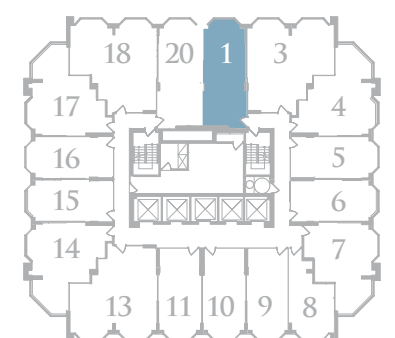


# THE PARIS

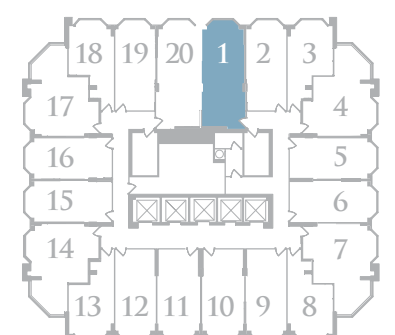
ONE + STUDY  
500 SQ.FT.



UPGRADE OPTIONAL  
SHOWER STALL



UPPER FLOORS  
(11-31)

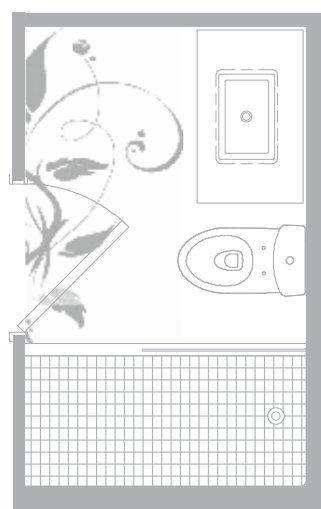
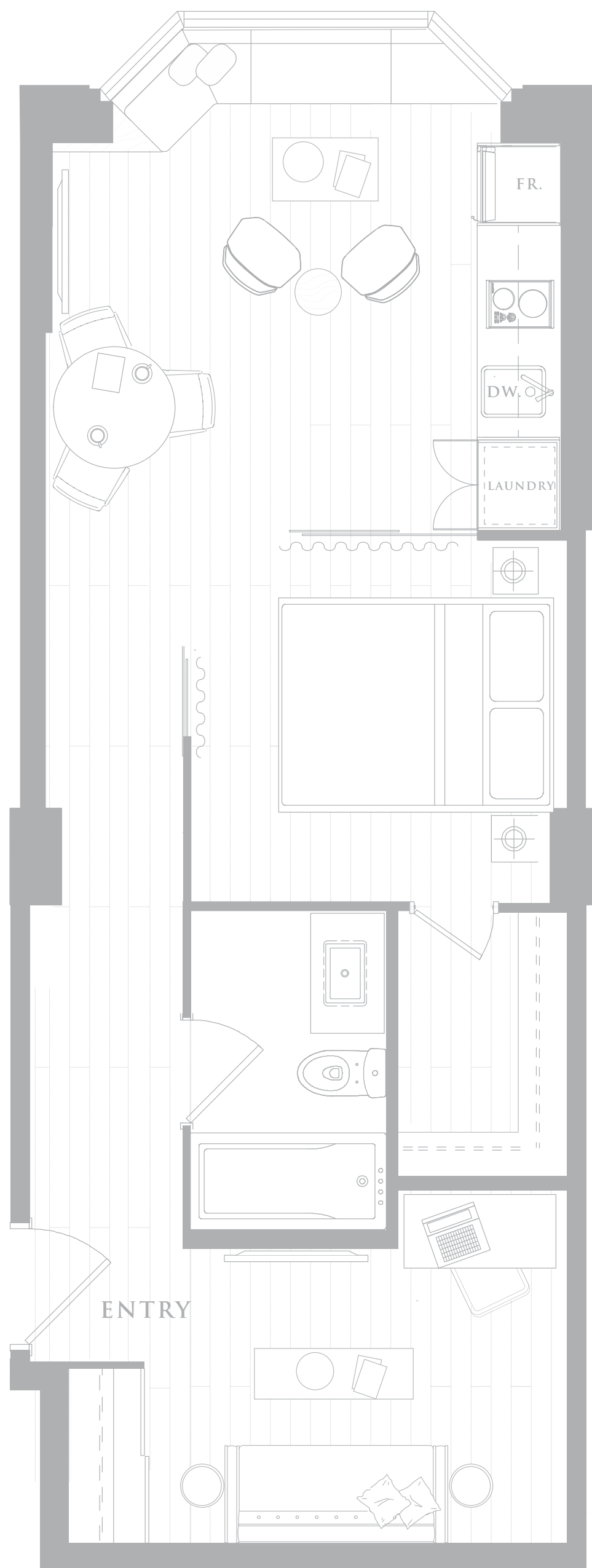


LOWER FLOORS  
(4-10)

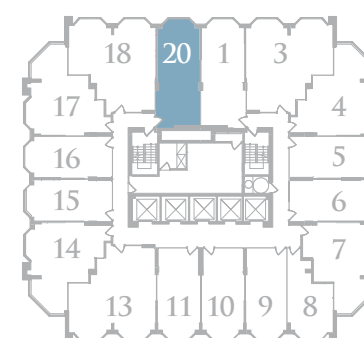


# THE TORONTO

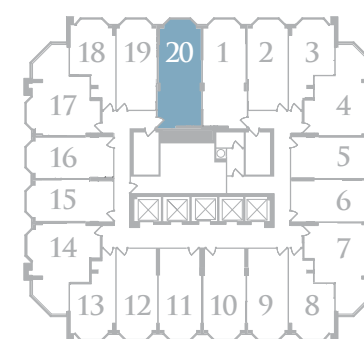
ONE + DEN  
550 SQ.FT.



UPGRADE OPTIONAL  
SHOWER STALL



UPPER FLOORS  
(11-31)

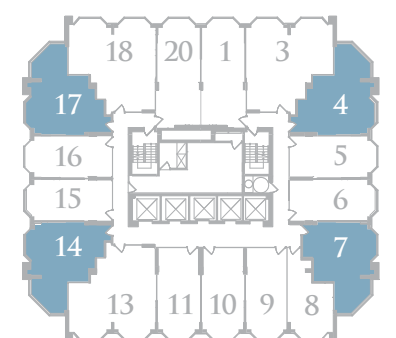
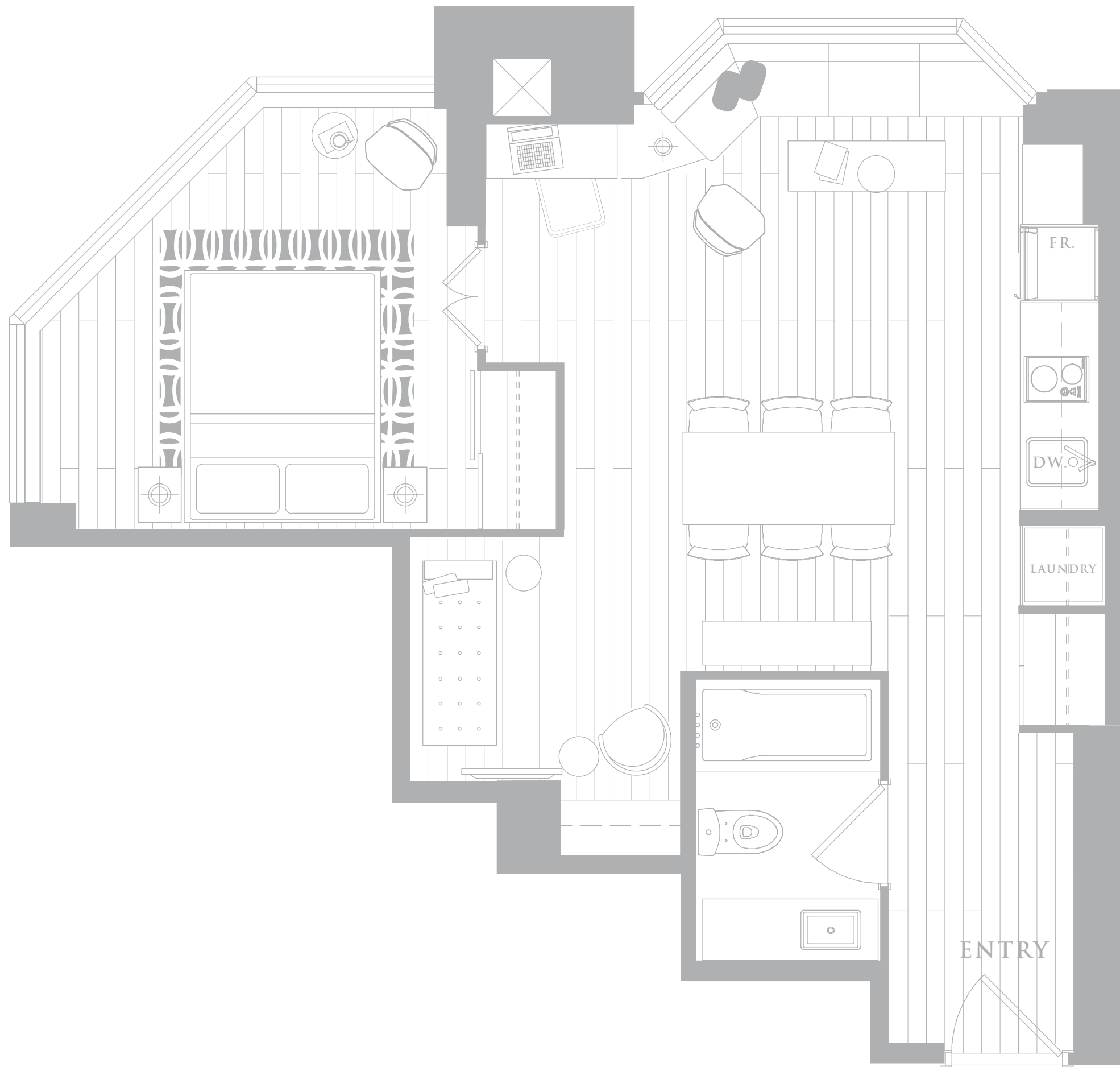


LOWER FLOORS  
(4-10)

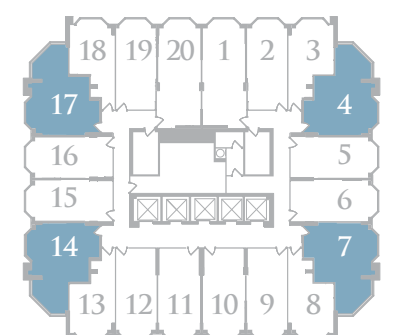


# THE LONDON

ONE + DEN  
610 SQ.FT.



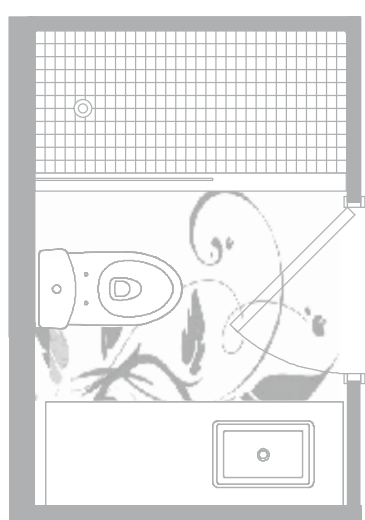
UPPER FLOORS  
(11-31)



LOWER FLOORS  
(4-10)



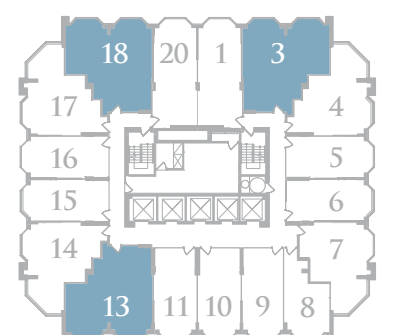
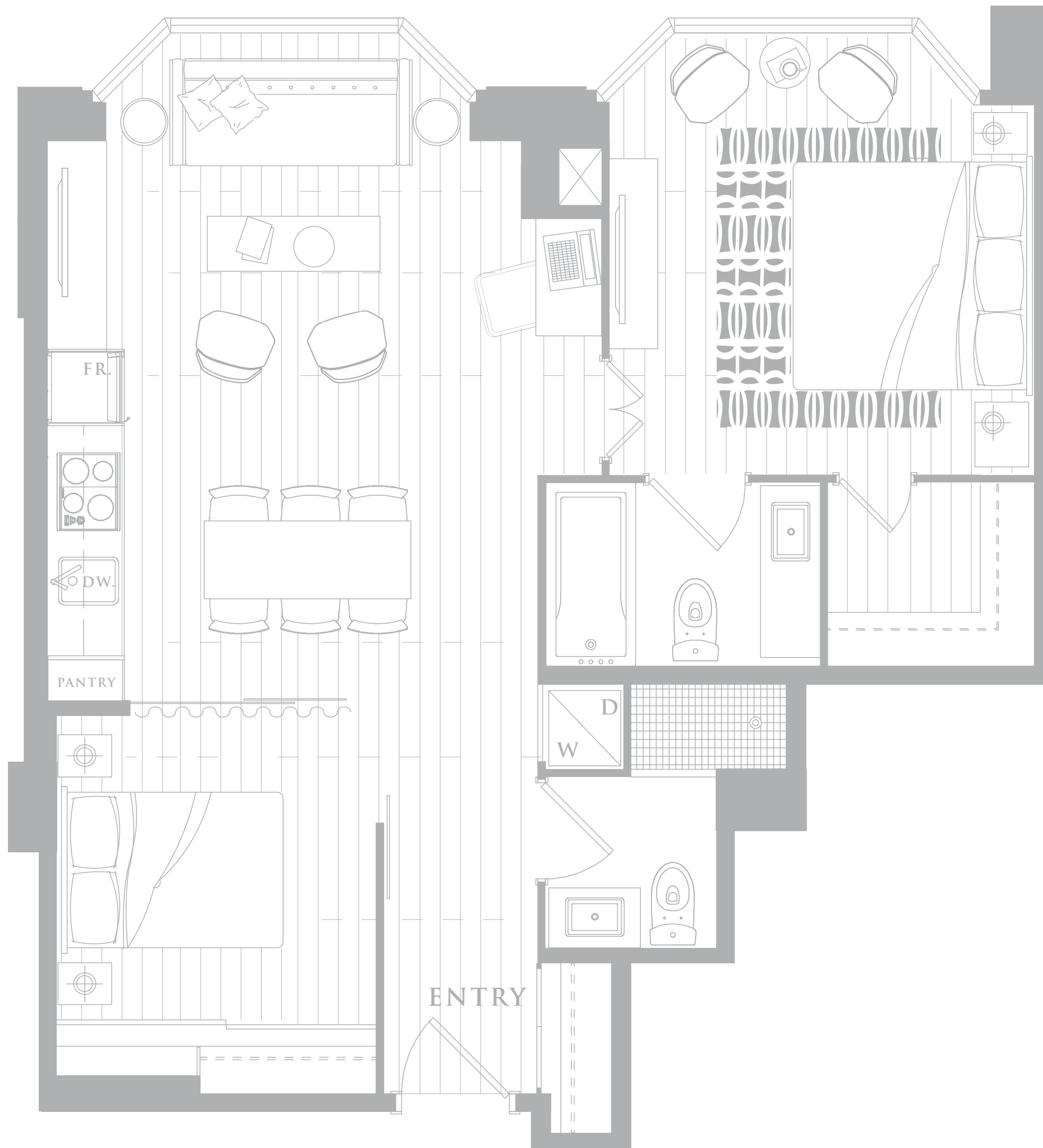
NORTH



UPGRADE OPTIONAL  
SHOWER STALL

# THE MILAN

TWO BEDROOM  
750 SQ.FT.



UPPER FLOORS  
(11-31)



YORKVILLE AT AVENUE ROAD  
TORONTO

[YORKVILLEPLAZA.COM](http://YORKVILLEPLAZA.COM)



Dimensions, specifications, details, layouts (including tile patterns), window sizes, mullions, bulkheads, fixture representation, appliance and mechanical locations and shafts, and materials are approximate only, may vary, and are subject to changes without notice as provided in the Agreement of Purchase and Sale. The Vendor shall have the right to make reasonable changes, in the opinion of the Vendor, in the plans and specifications if required. Plans may change subject to conditions in the existing building. Plans may be reversed. Wall thickness may vary from those shown. Furniture not included. Area includes exclusive use locker on the same floor as per Purchase Agreement. Plans not to scale. Errors and omissions excepted.