

LANDPOWER



tridel.com

THE URBAN
collection

REAL ESTATE LTD. BROKERAGE

BAYSIDE
TORONTO | A HINES MASTER
PLANNED COMMUNITY.

AQUABELLA
BAYSIDE TORONTO

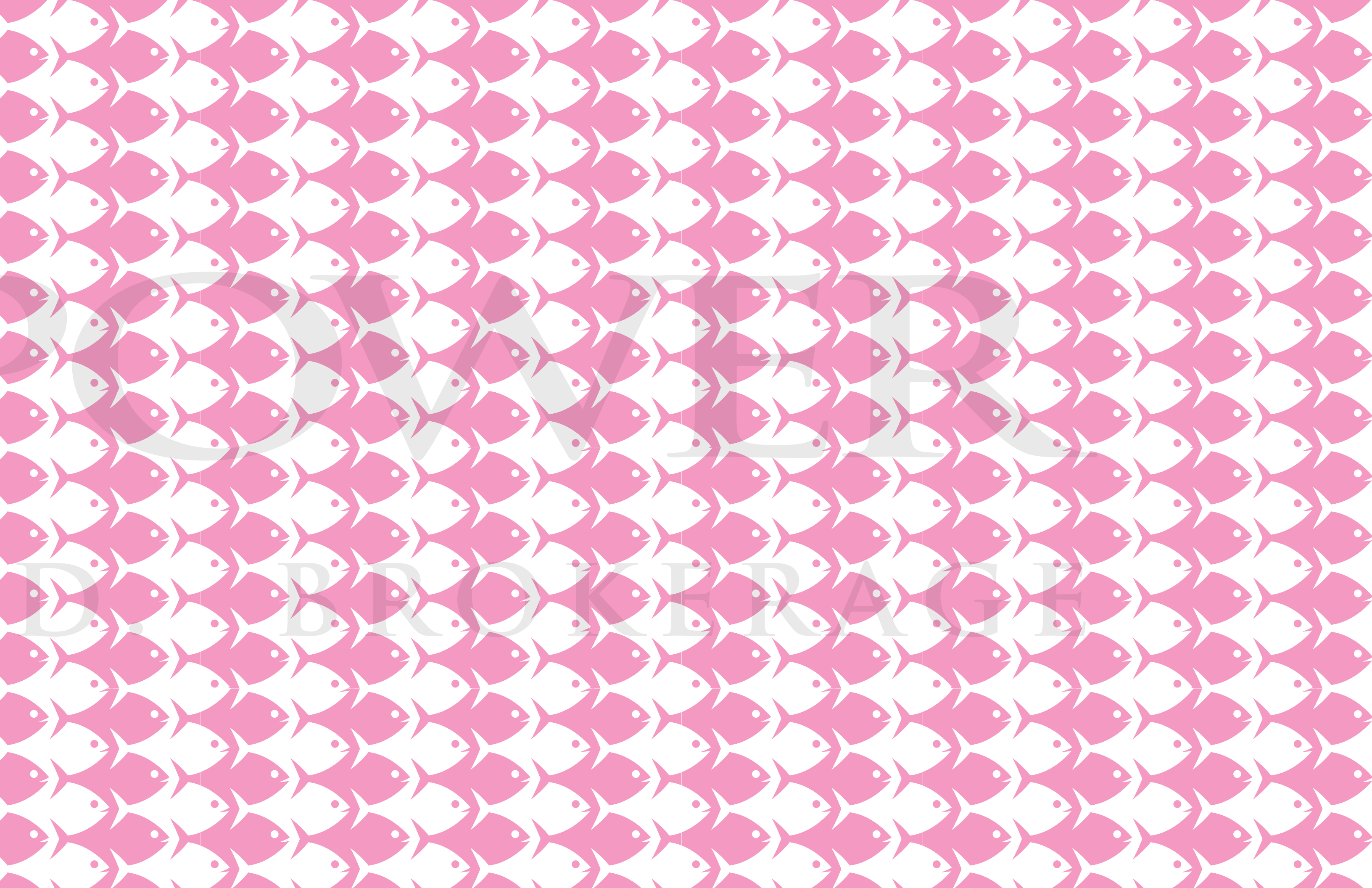
LUXURY BY

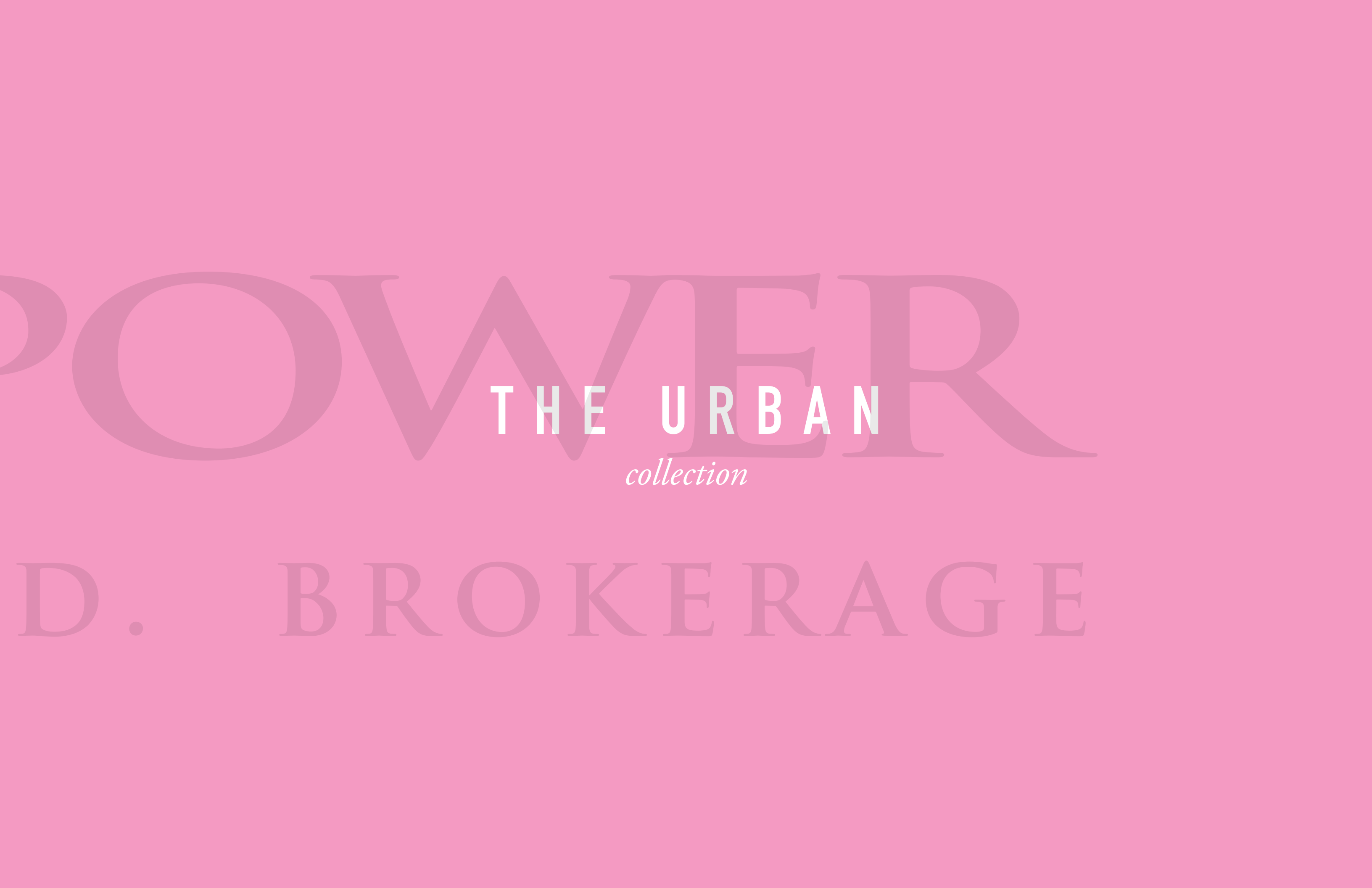
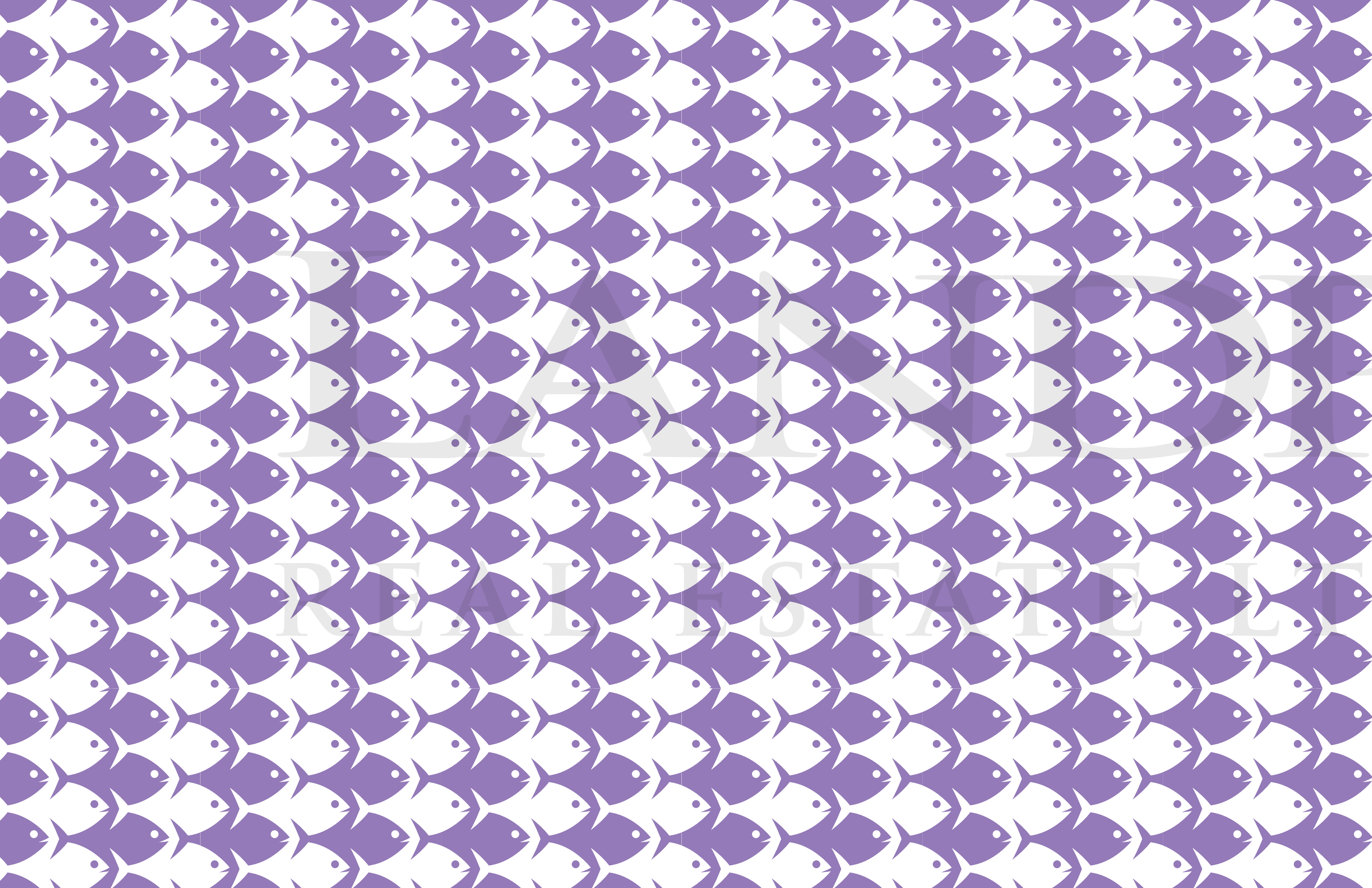


THE LAKE

REAL ESTATE LTD.

BROKERAGE





REAL ESTATE

POWER
THE URBAN
collection
D. BROKERAGE



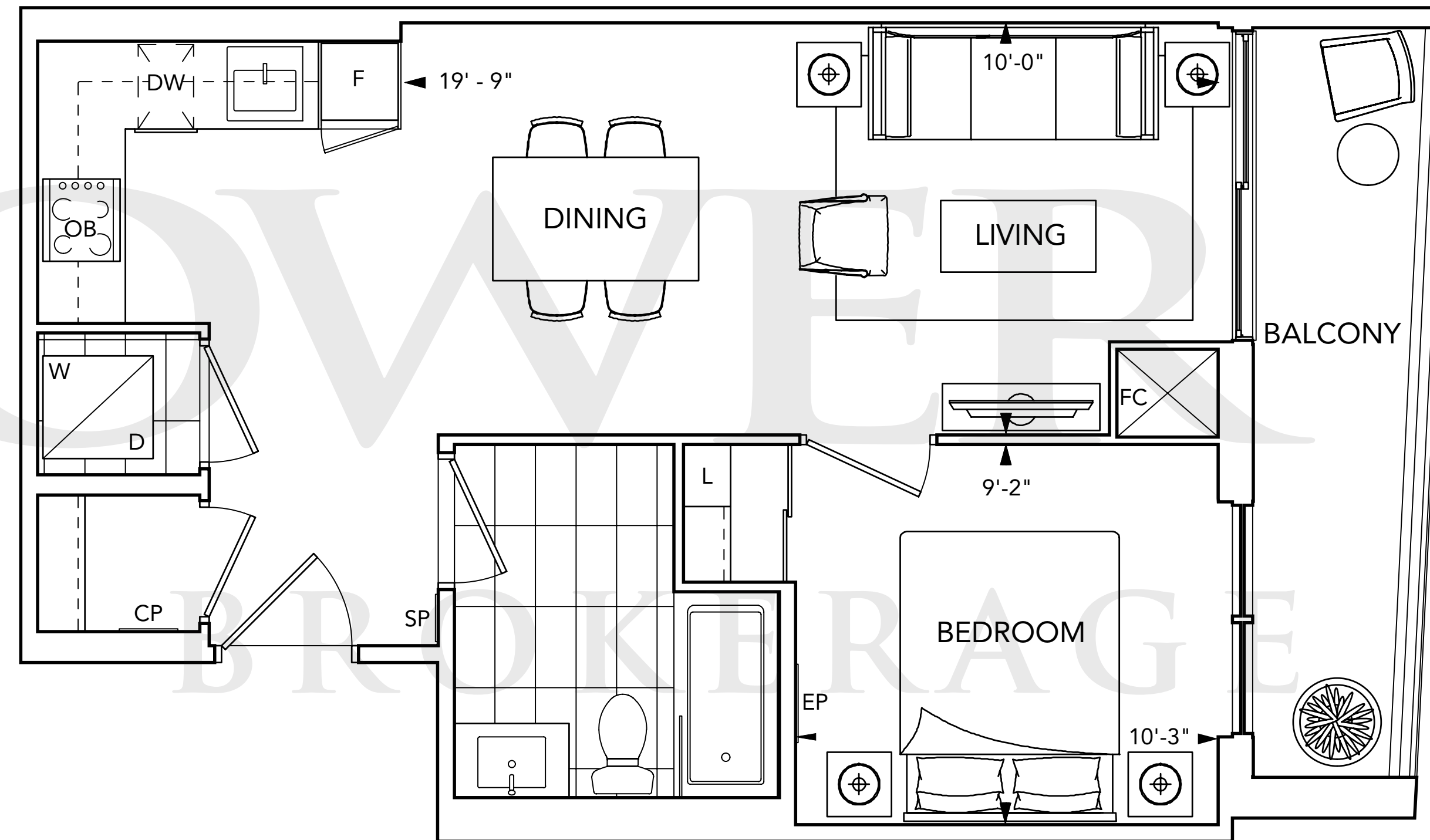
CITY VIEW

SUITE 1A

1 BEDROOM



Floors 3-8





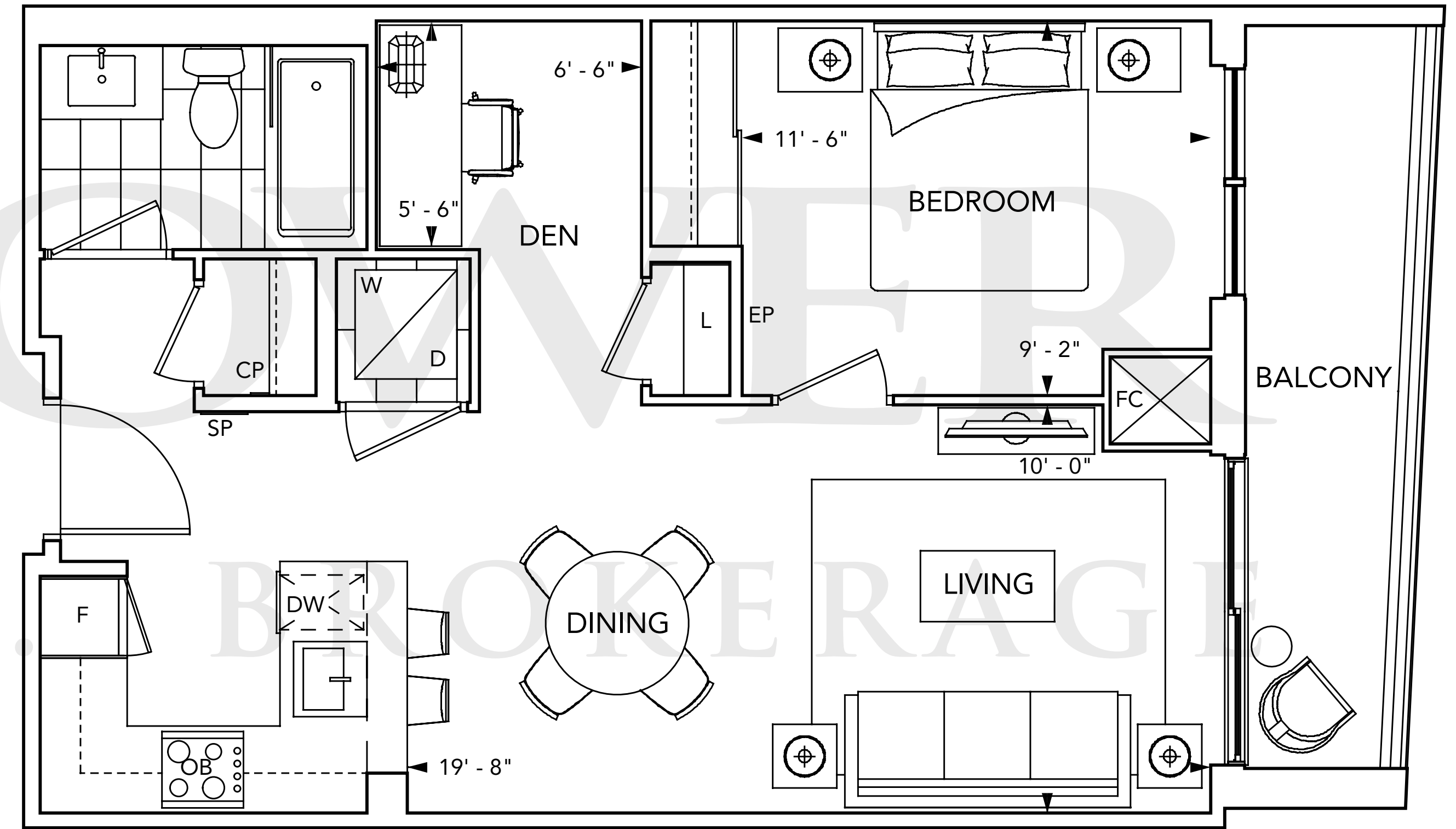
CITY VIEW

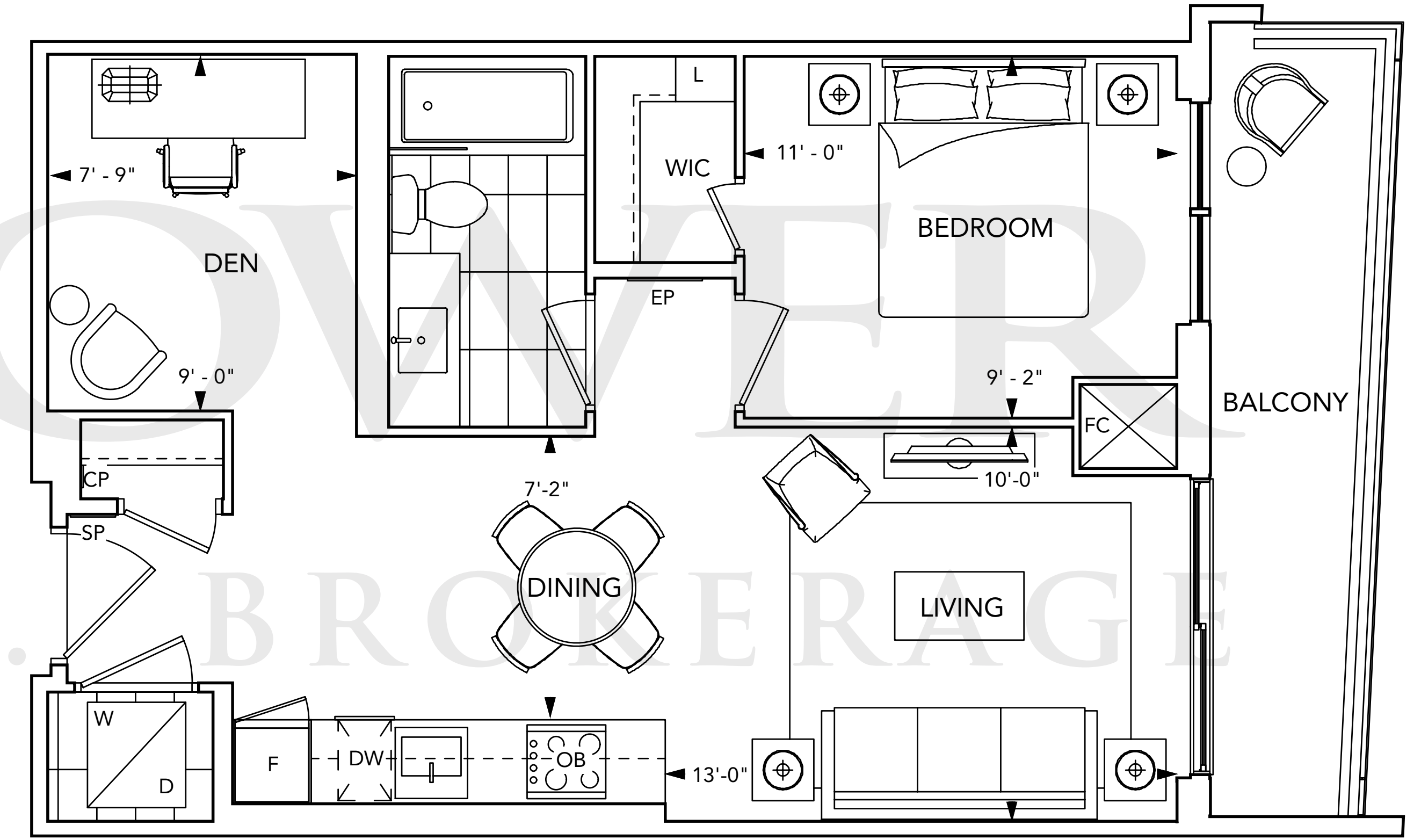
SUITE 1C+D/1C+DR

1 BEDROOM + DEN



Floors 2-7







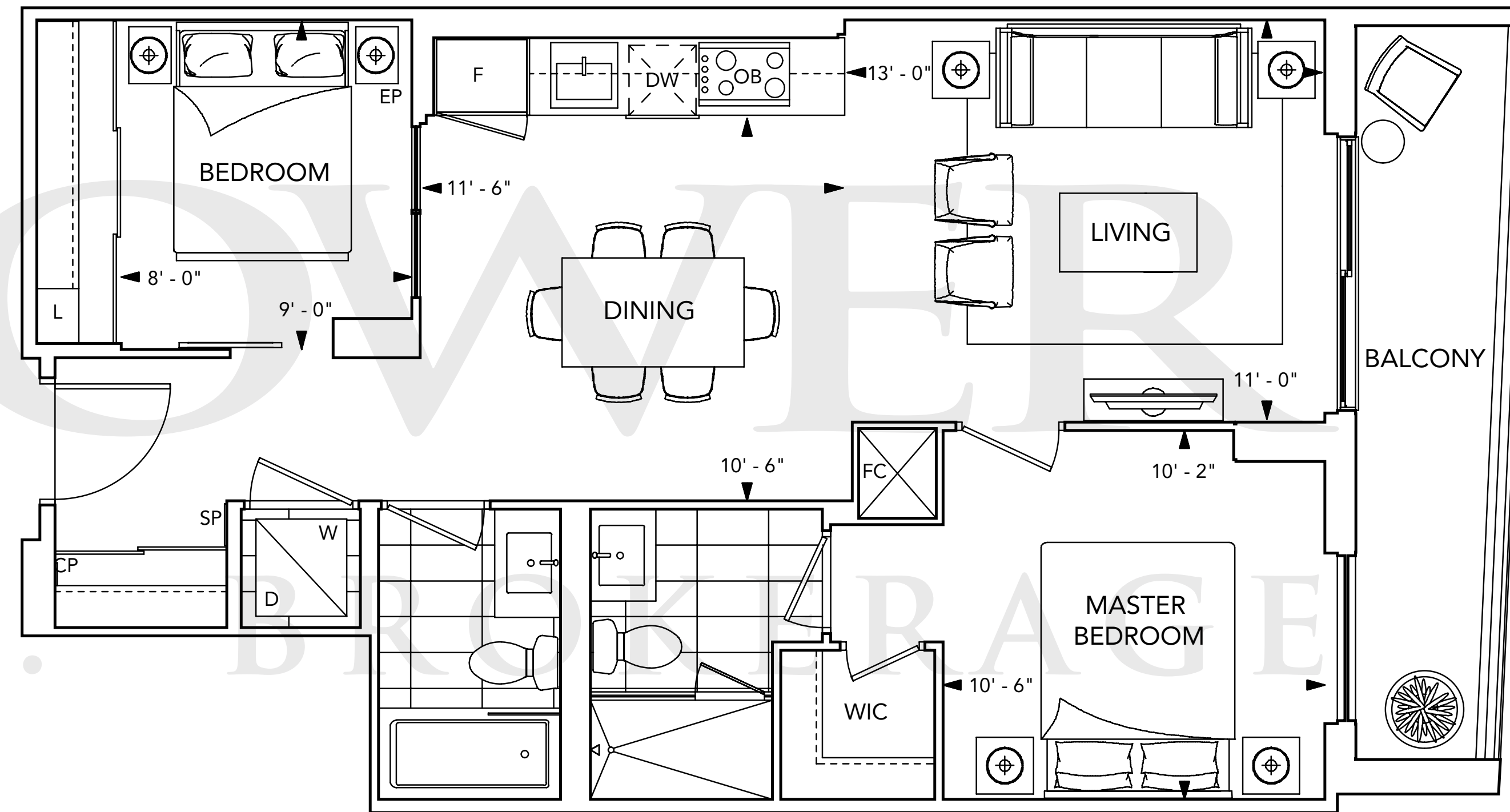
CITY VIEW

SUITE 2A

2 BEDROOM



Floors 3-6

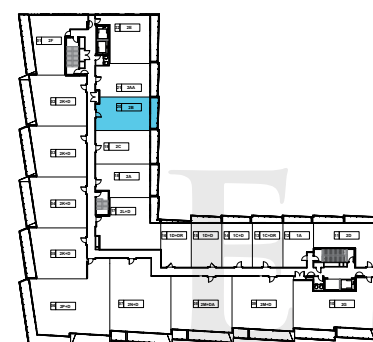




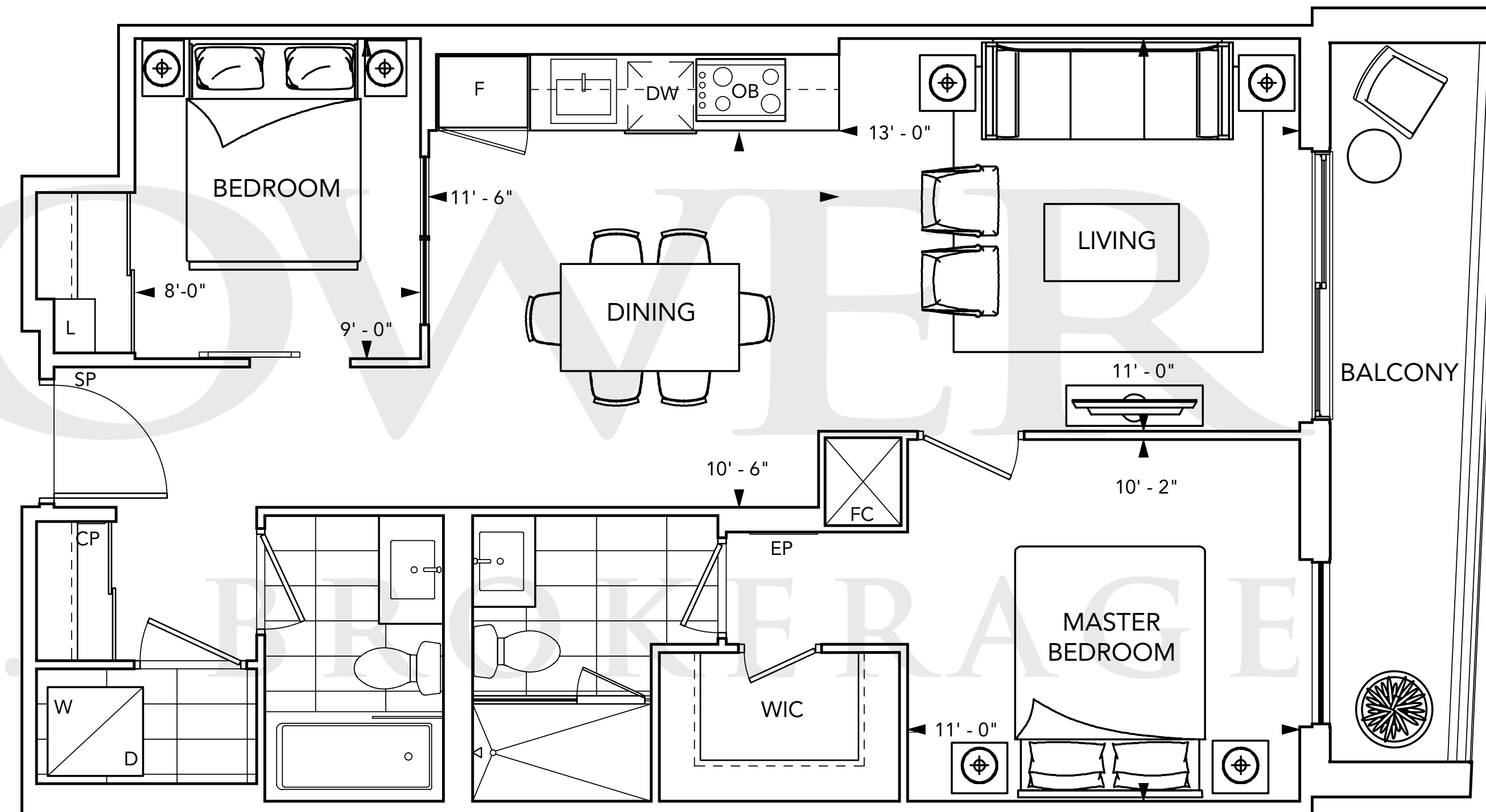
CITY VIEW

SUITE 2B

2 BEDROOM



Floors 3-9





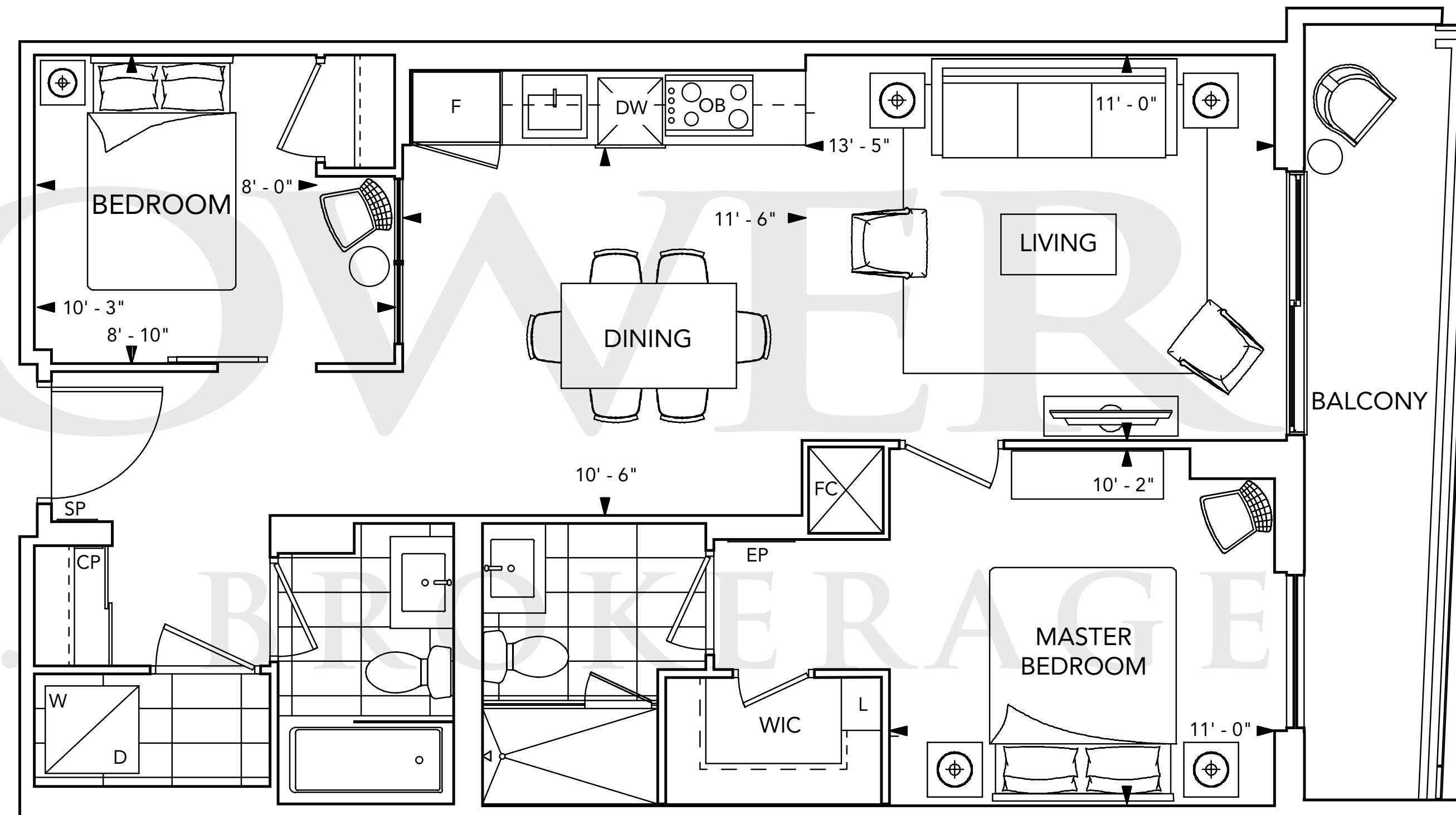
CITY VIEW

SUITE 2C

2 BEDROOM



Floors 3-8

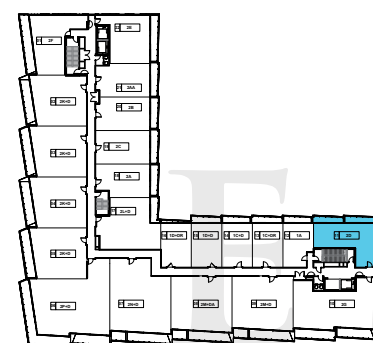




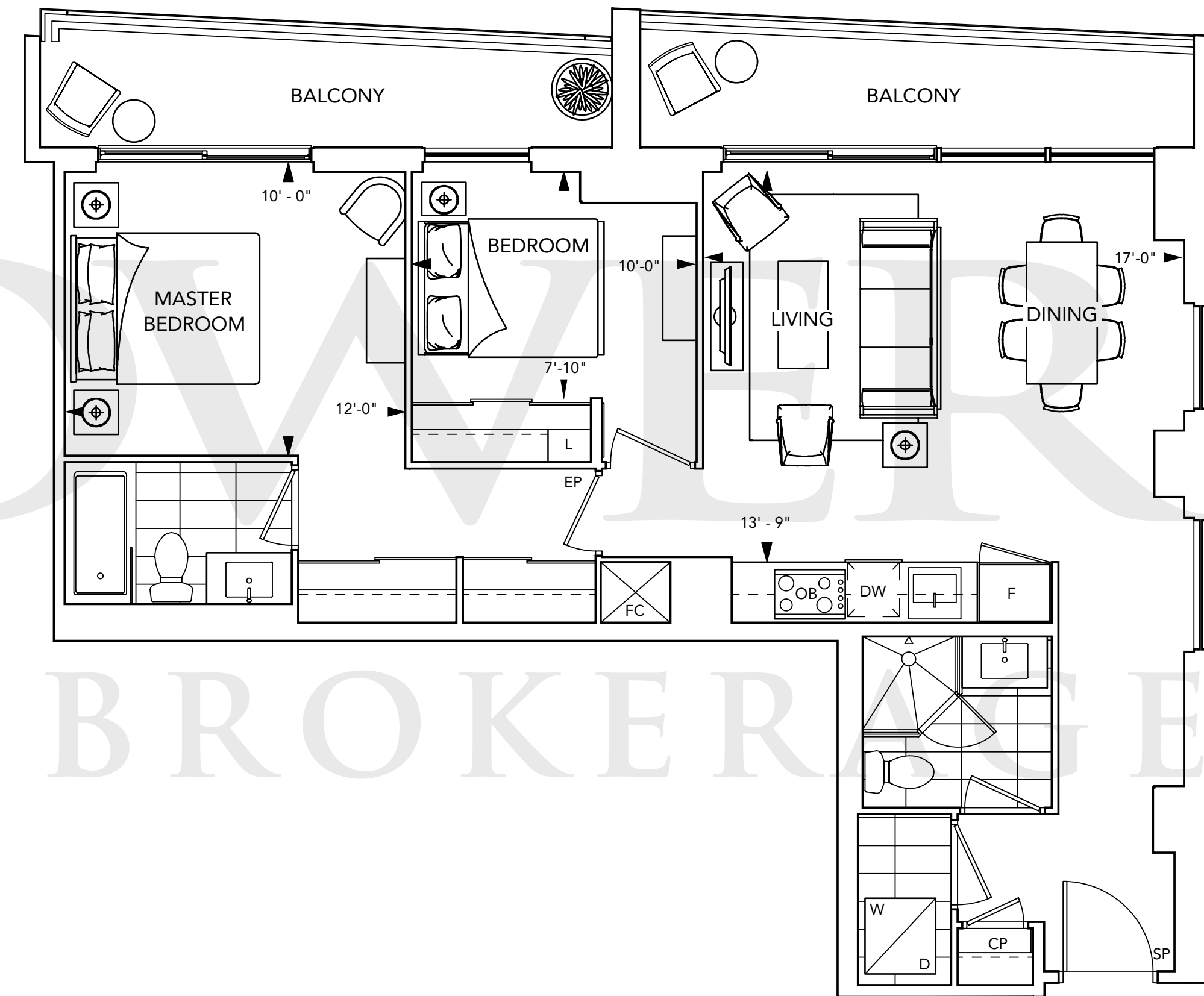
CITY VIEW

SUITE 2D

2 BEDROOM



Floors 3-10

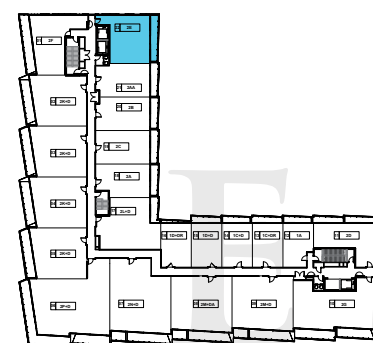




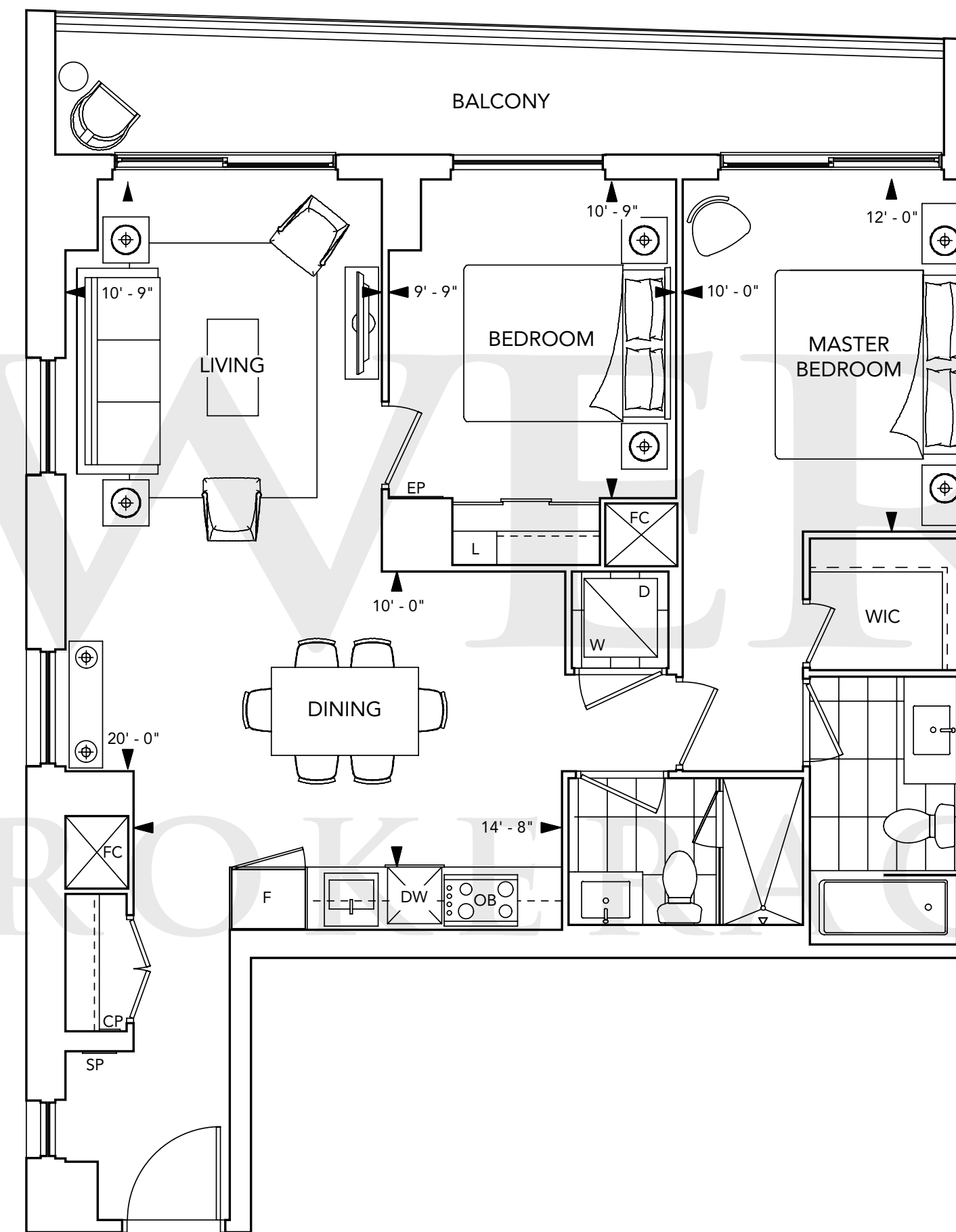
CITY VIEW

SUITE 2E

2 BEDROOM



Floors 3-PH



LANDPOWER
REAL ESTATE LTD.

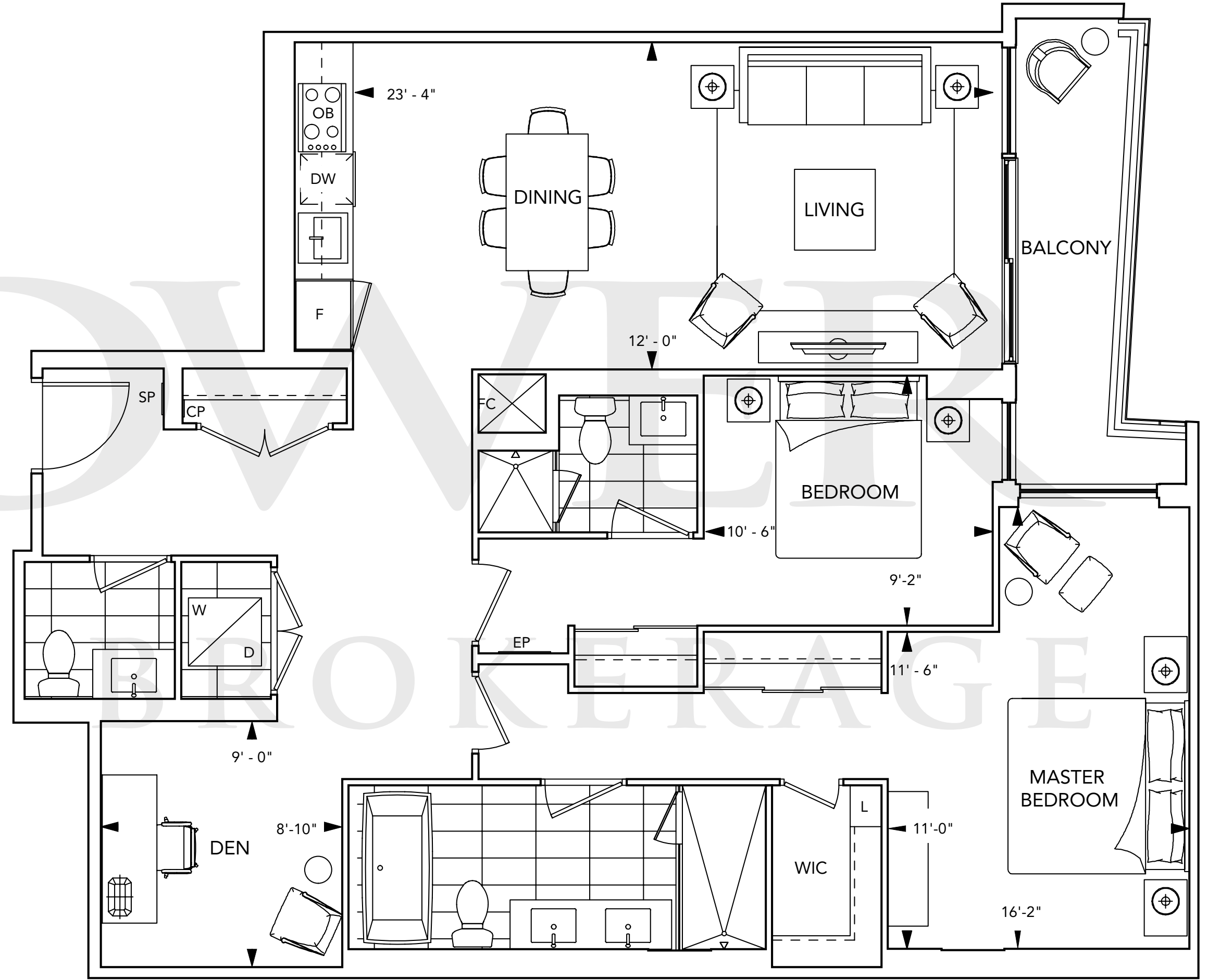


CITY VIEW

SUITE 2L+D
2 BEDROOM + DEN



Floors 3-6



SUITE FEATURES & FINISHES

GENERAL

- Smooth ceilings painted white in all areas of suite.

FLOOR COVERINGS

- Plank laminate floating floor with acoustic underlay in all rooms excluding bathrooms and laundry.
- Designer selected premium porcelain floor tiles in bathrooms and laundry.

KITCHEN

- Designer kitchen with contemporary, full height flat panel doors complete with built-in appliances. Finishes include matte finish and wood grain laminate.
- Granite or quartz kitchen countertop and matching backsplash with polished single square edge and deep undermount, stainless steel single bowl sink.
- Polished chrome, single lever kitchen faucet with integrated pull down spray.

- 1 bedroom and 1 bedroom plus den suites will feature appliances with:

- Panel ready energy efficient 18" dishwasher
- Energy efficient stainless steel 24" refrigerator with bottom mount freezer
- 24" stainless steel microwave/hood combo
- 24" built-in convection oven in stainless steel finish
- 24" built-in glass ceramic cooktop

- 2 bedroom and 2 bedroom plus den suites will feature appliances with:

- Panel ready energy efficient 24" dishwasher
- Counter depth energy efficient stainless steel 30" refrigerator with bottom mount freezer
- 30" stainless steel microwave/hood combo
- 30" built-in convection oven in stainless steel finish
- 30" built-in glass ceramic cooktop

- Surface mounted lighting in kitchen area.

- Energy saving LED under-cabinet lighting.

BATHROOM(S)

- Custom vanity with white quartz countertop and undermount rectangular basin, featuring contemporary flat panel cabinetry.
- Master ensuite bathroom to feature vanity mirror with integrated lighting and storage cabinet. All other bathrooms to feature vanity mirror with wall sconce lighting above.
- 5'-0" soaker tub with polished chrome single lever faucet and glass enclosure (no door).
- Pressure balanced, temperature controlled chrome shower faucet.
- Porcelain tiles in tub, shower enclosure and on wall.
- Shower recessed light in ceiling of shower stalls and tub.
- Energy efficient, low-flow shower head(s).
- Polished chrome single lever vanity faucet in bathroom(s).
- Low-flow high performance toilet(s).
- Shower stall features frameless glass enclosure with chrome hardware.