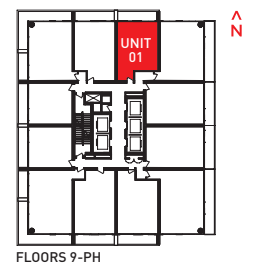
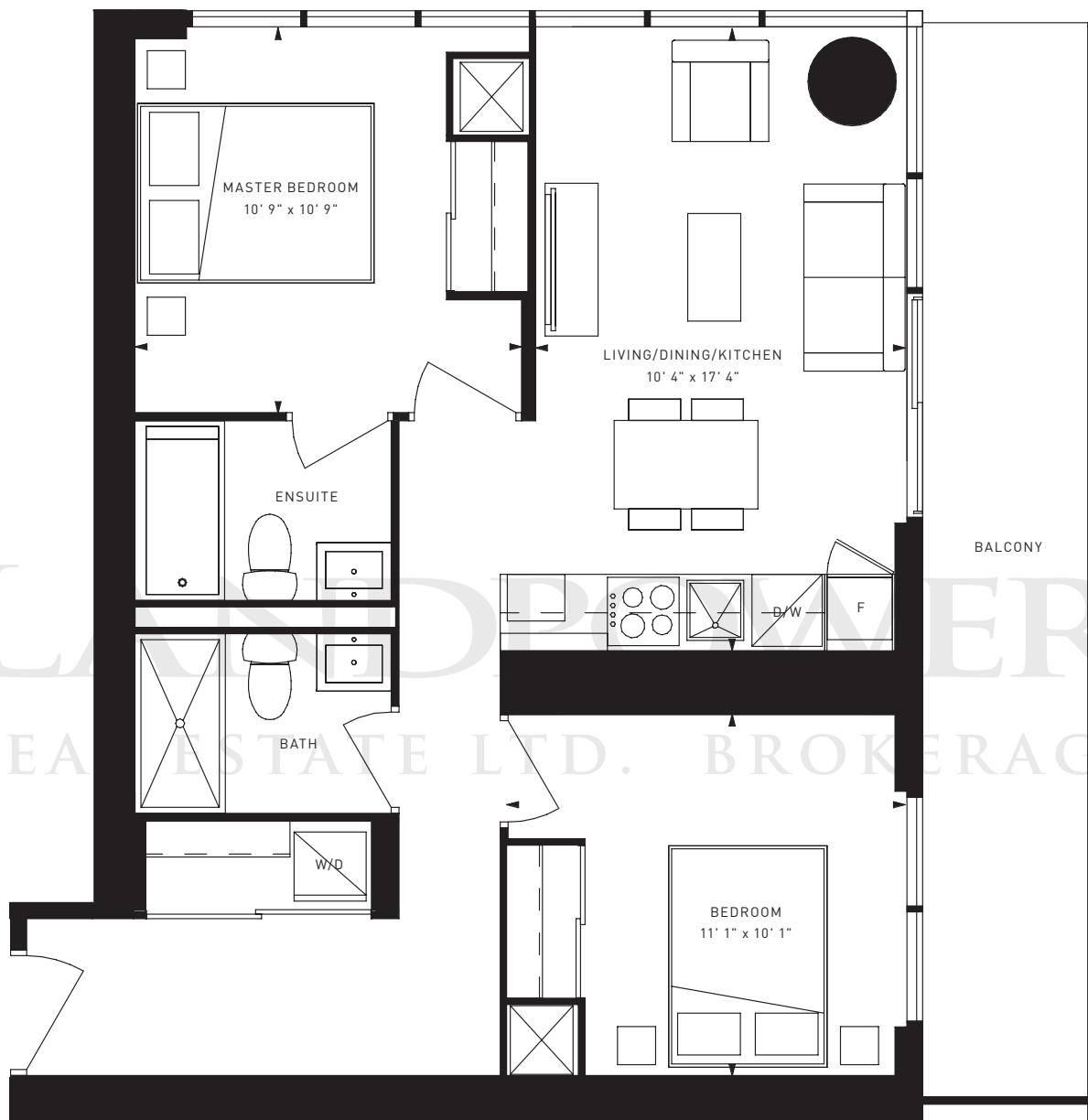


TC01
 1 BED + DEN
 INTERIOR: 590 S.F.
 EXTERIOR: 112 S.F.



FLOORS 9-PH

Balconies are exclusive use common elements, and the location and size may be subject to change without notice, including but not restricted to changes or variations between suites in exterior architectural conditions (dividers, metal paneling, shear walls, etc).

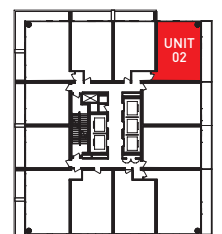


TC02

2 BED

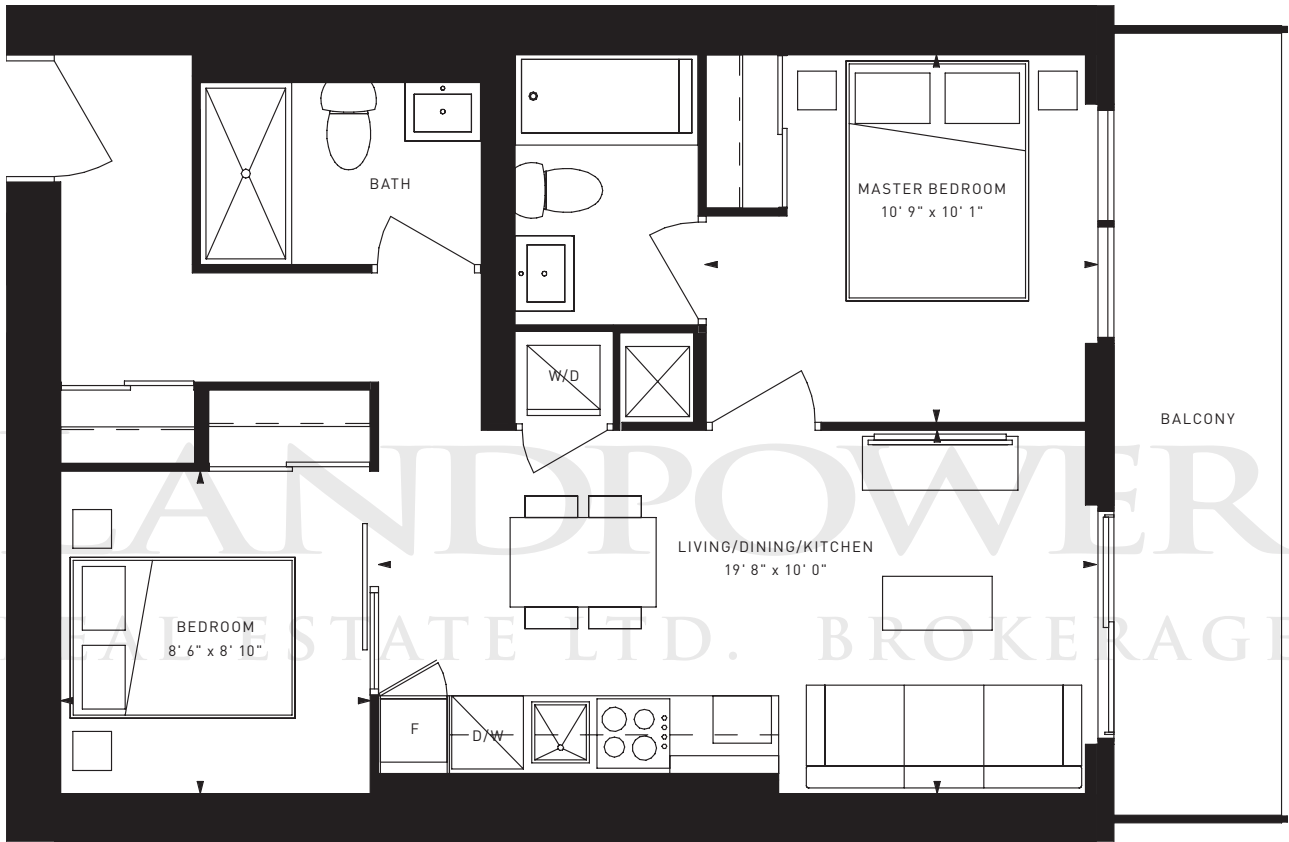
INTERIOR: 699 S.F.

EXTERIOR: 159 S.F.



FLOORS 9-PH

Balconies are exclusive use common elements, and the location and size may be subject to change without notice, including but not restricted to changes or variations between suites in exterior architectural conditions (dividers, metal paneling, shear walls, etc).

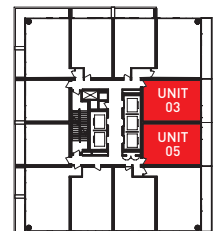


TC03|05

2 BED

INTERIOR: 665 S.F.

EXTERIOR: 114 S.F.

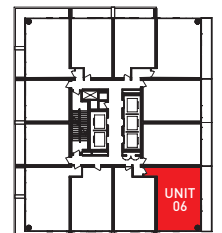


FLOORS 9-PH

Balconies are exclusive use common elements, and the location and size may be subject to change without notice, including but not restricted to changes or variations between suites in exterior architectural conditions (dividers, metal paneling, shear walls, etc).

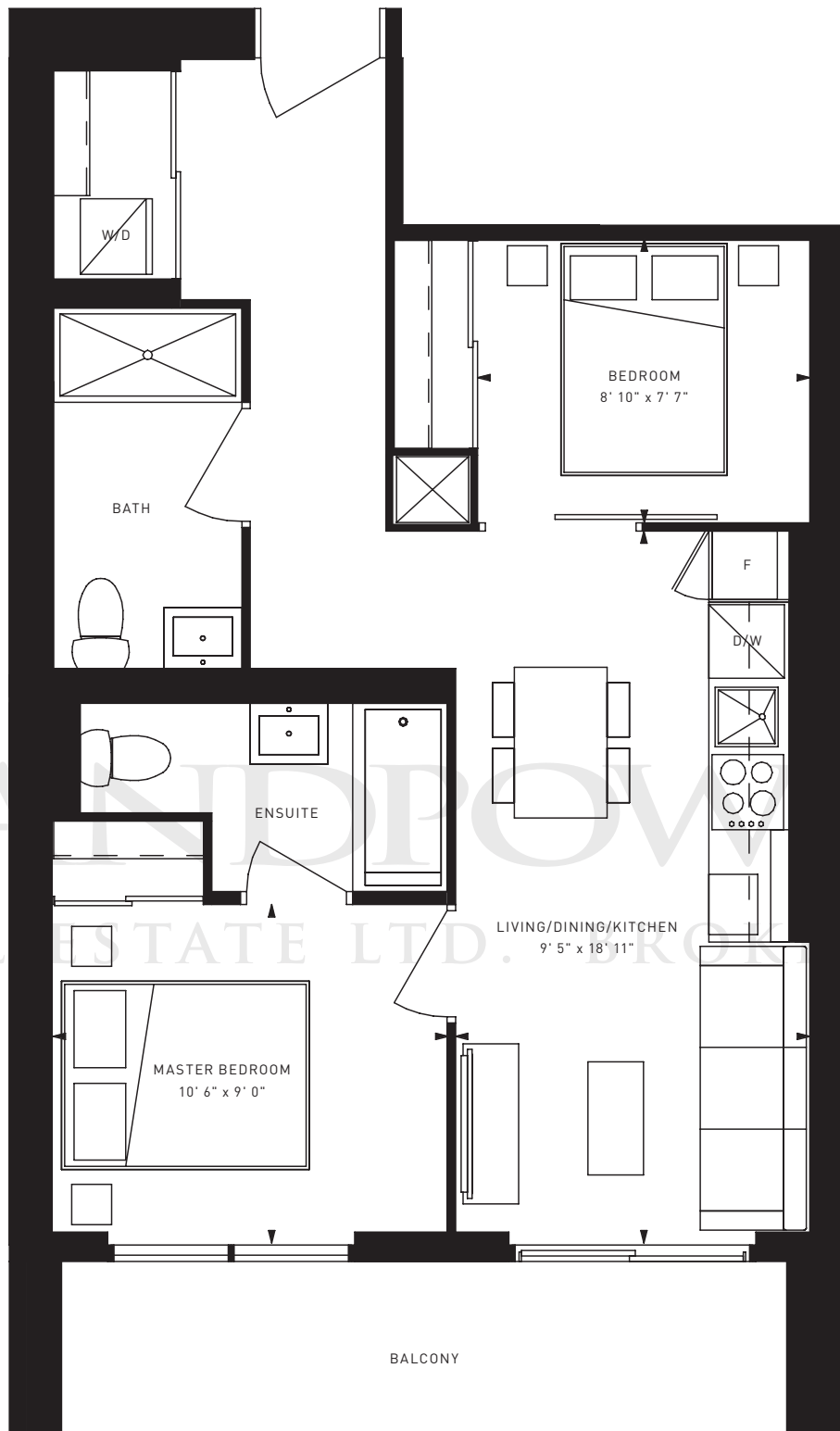


TC06
 2 BED + STUDY
 INTERIOR: 770 S.F.
 EXTERIOR: 171 S.F.

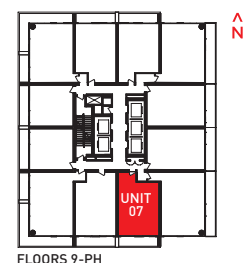


FLOORS 9-PH

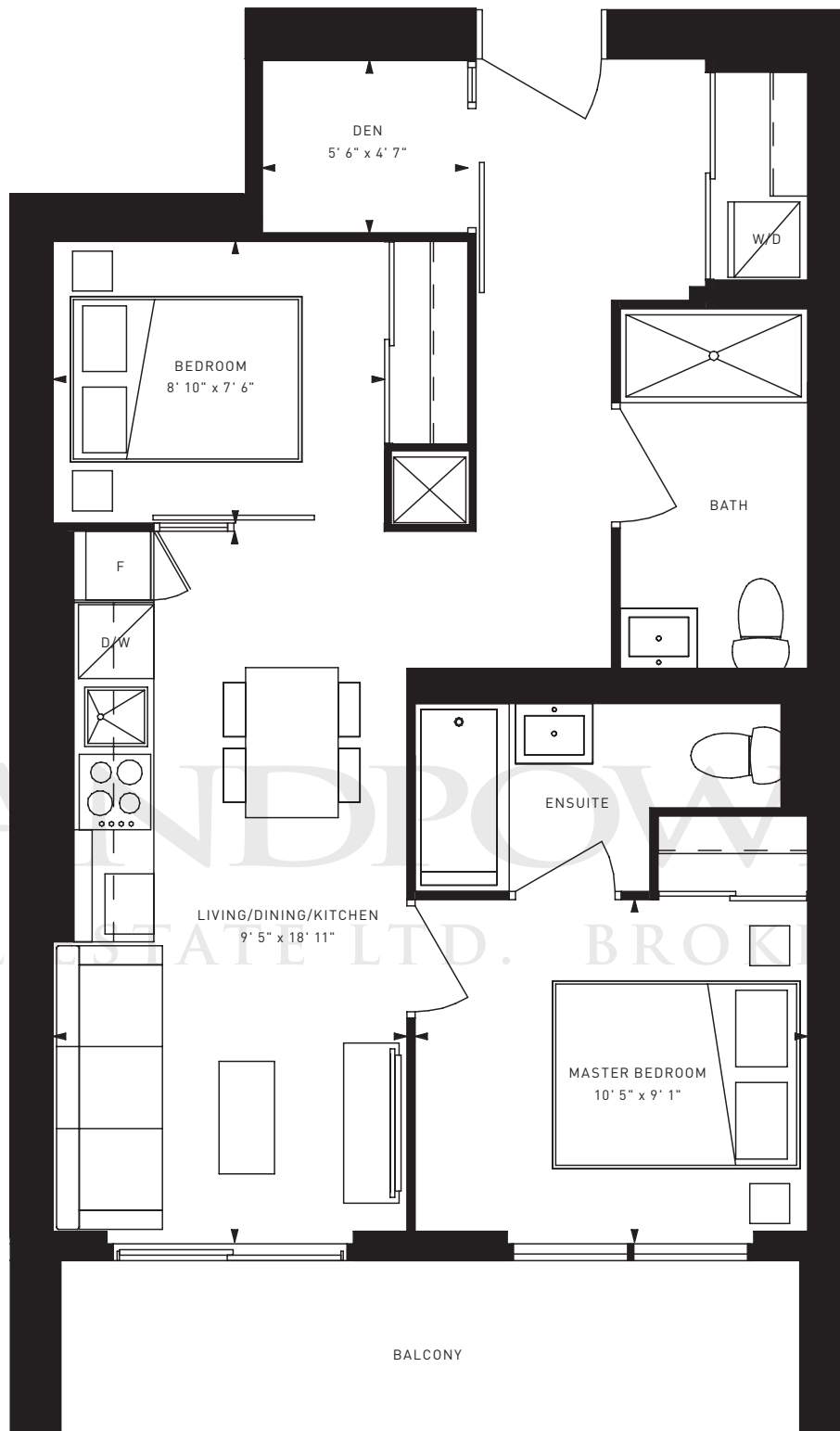
Balconies are exclusive use common elements, and the location and size may be subject to change without notice, including but not restricted to changes or variations between suites in exterior architectural conditions (dividers, metal paneling, shear walls, etc).



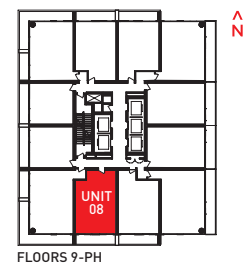
TC07
 2 BED
 INTERIOR: 638 S.F.
 EXTERIOR: 112 S.F.



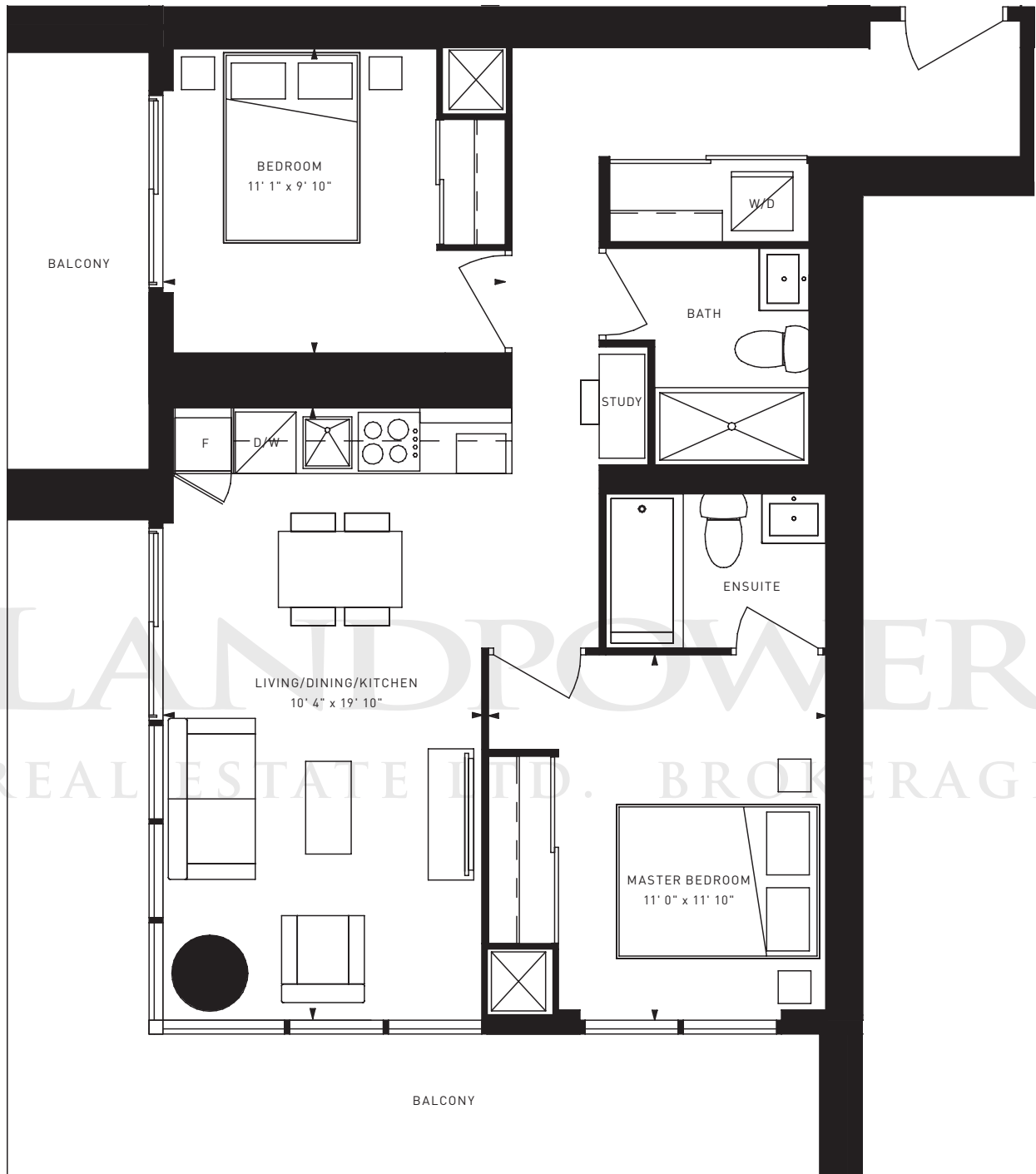
Balconies are exclusive use common elements, and the location and size may be subject to change without notice, including but not restricted to changes or variations between suites in exterior architectural conditions (dividers, metal paneling, shear walls, etc).



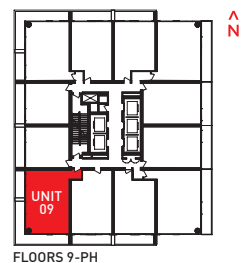
TC08
 2 BED + DEN
 INTERIOR: 675 S.F.
 EXTERIOR: 112 S.F.



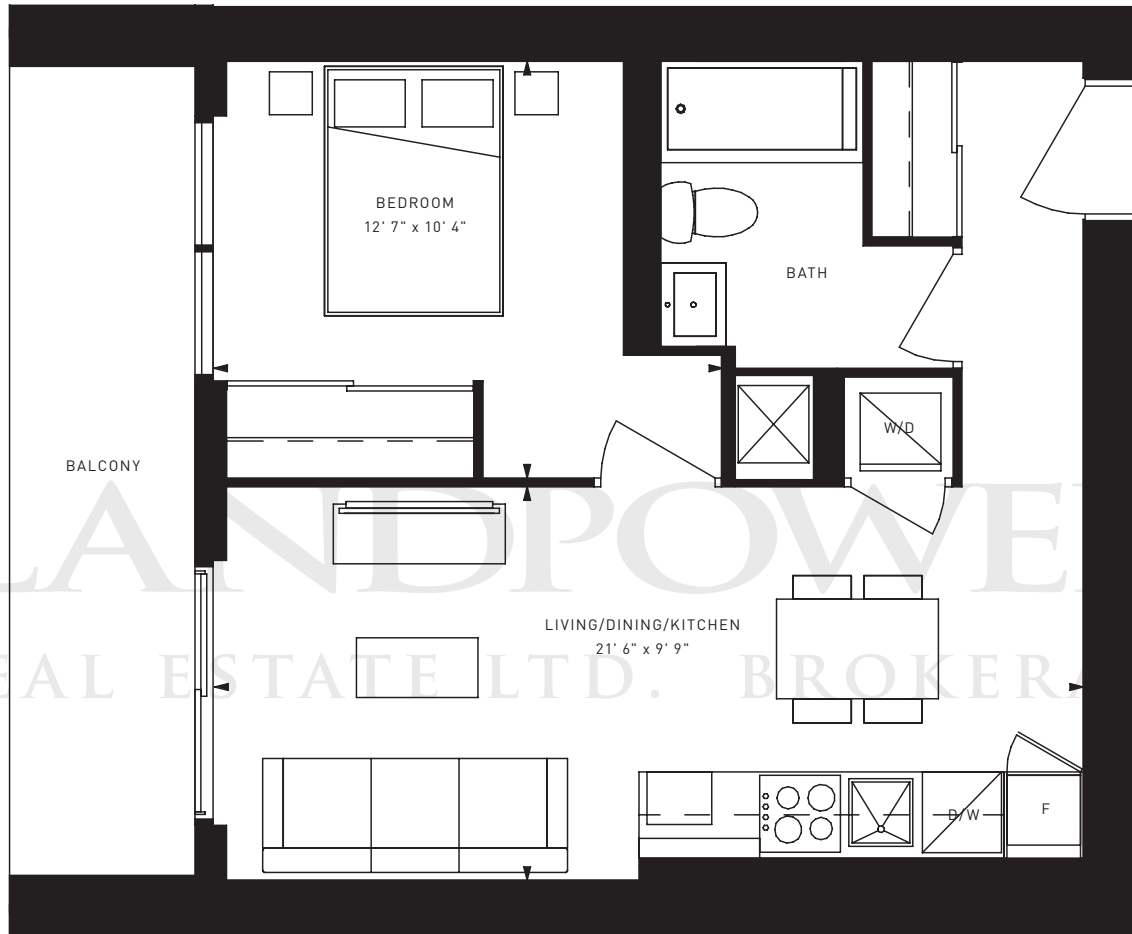
Balconies are exclusive use common elements, and the location and size may be subject to change without notice, including but not restricted to changes or variations between suites in exterior architectural conditions (dividers, metal paneling, shear walls, etc).



TC09
 2 BED + STUDY
 INTERIOR: 770 S.F.
 EXTERIOR: 317 S.F.



Balconies are exclusive use common elements, and the location and size may be subject to change without notice, including but not restricted to changes or variations between suites in exterior architectural conditions (dividers, metal paneling, shear walls, etc).

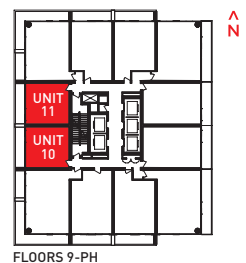


TC10|11

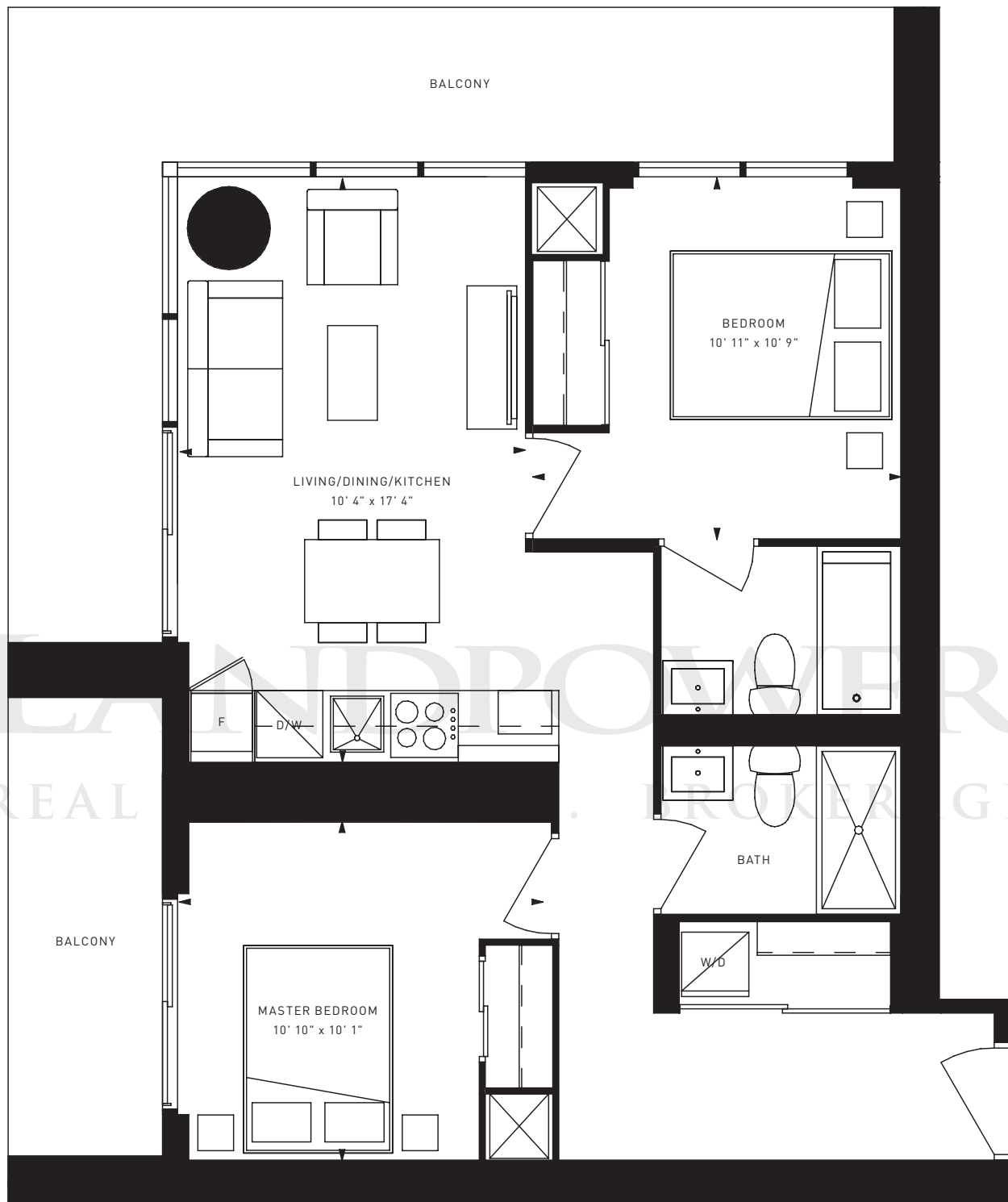
1 BED

INTERIOR: 503 S.F.

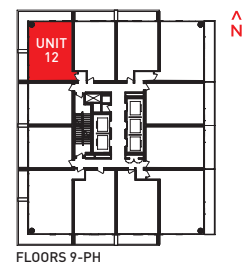
EXTERIOR: 114 S.F.



Balconies are exclusive use common elements, and the location and size may be subject to change without notice, including but not restricted to changes or variations between suites in exterior architectural conditions (dividers, metal paneling, shear walls, etc).



TC12
 2 BED
 INTERIOR: 699 S.F.
 EXTERIOR: 305 S.F.

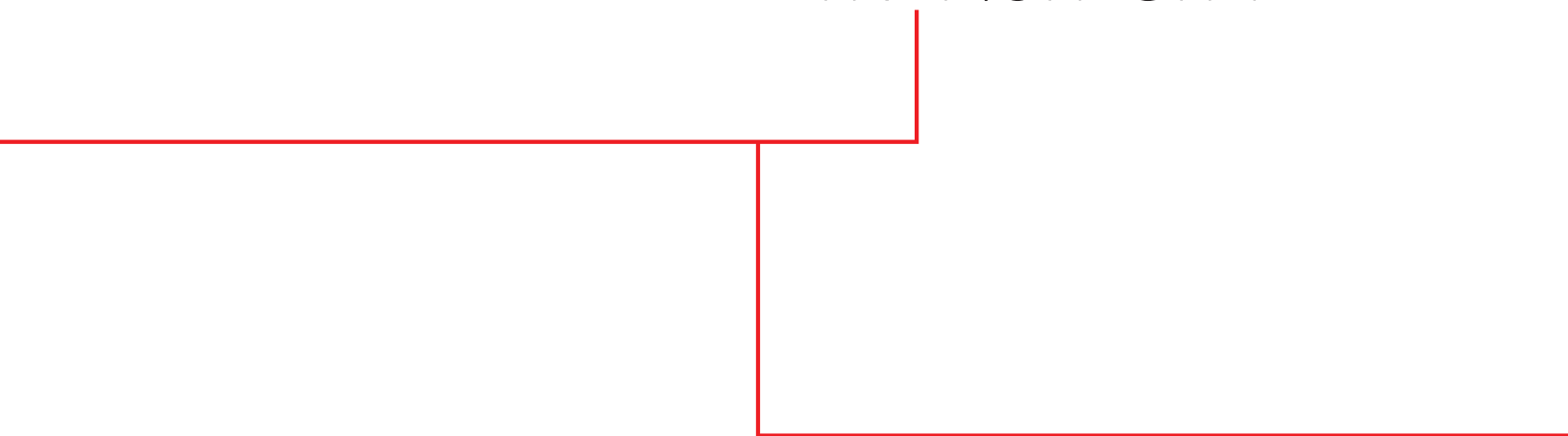


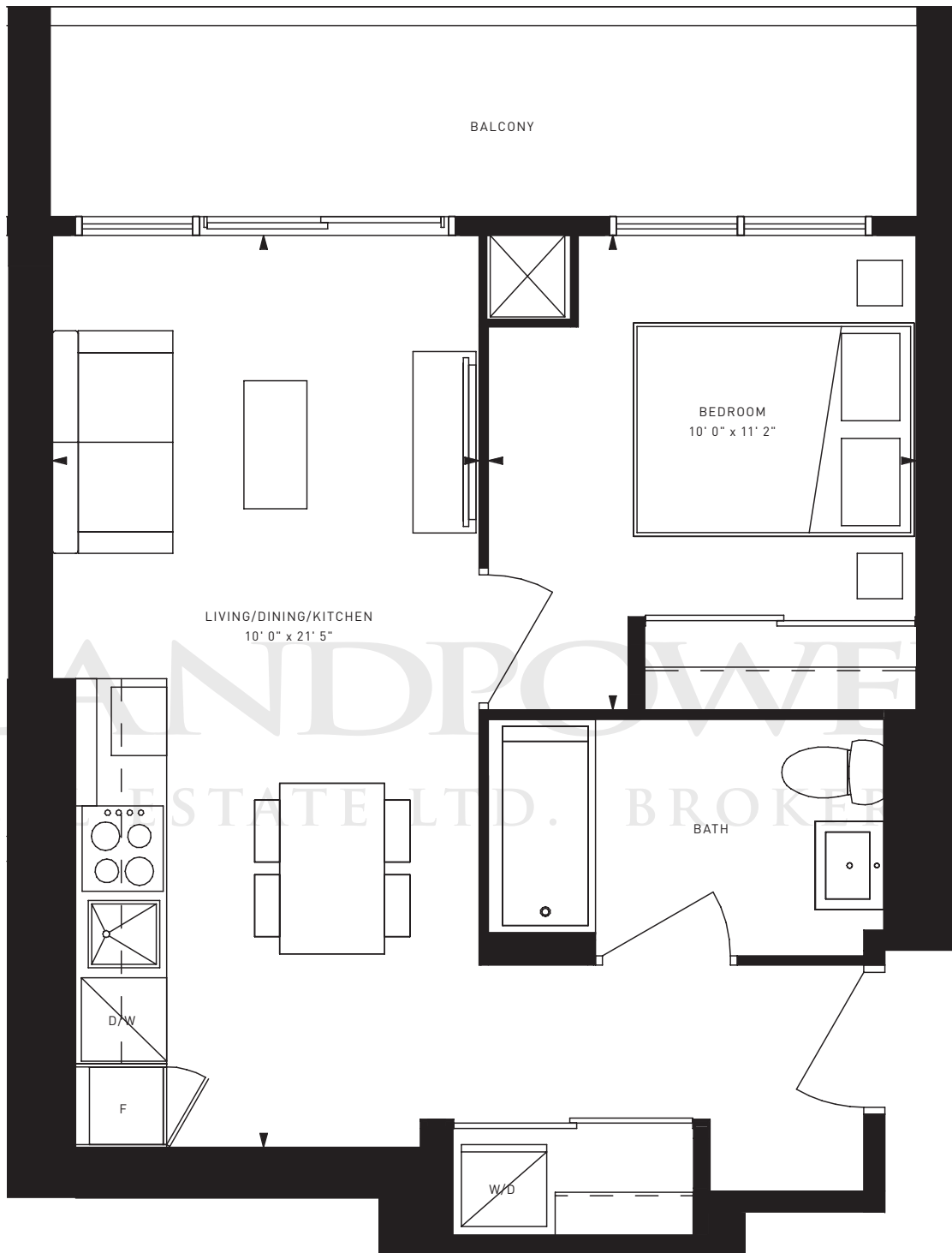
Balconies are exclusive use common elements, and the location and size may be subject to change without notice, including but not restricted to changes or variations between suites in exterior architectural conditions (dividers, metal paneling, shear walls, etc).

LANDPOWER

REAL ESTATE LTD. BROKERAGE

TR[^]NSIT CITY



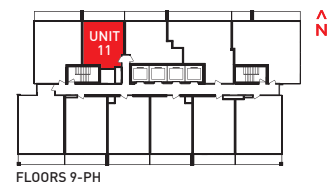


TC608

1 BED

INTERIOR: 503 S.F.

EXTERIOR: 105 S.F.



Balconies are exclusive use common elements, and the location and size may be subject to change without notice, including but not restricted to changes or variations between suites in exterior architectural conditions (dividers, metal paneling, shear walls, etc).

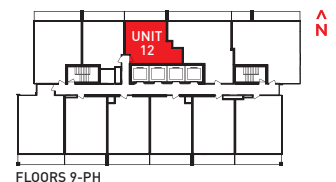


TC658

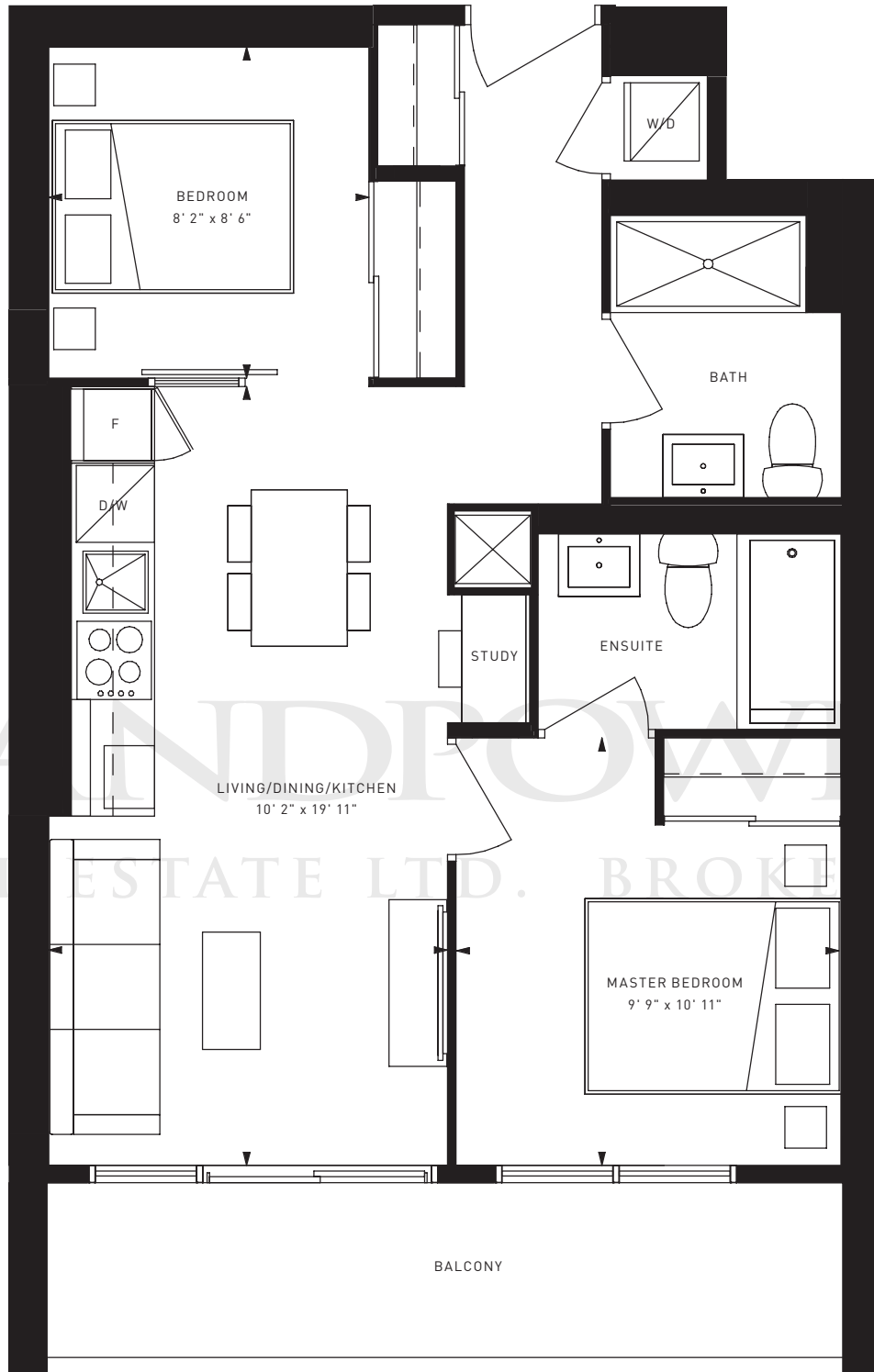
1 BED + DEN

INTERIOR: 553 S.F.

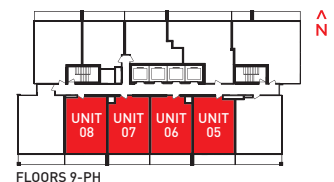
EXTERIOR: 105 S.F.



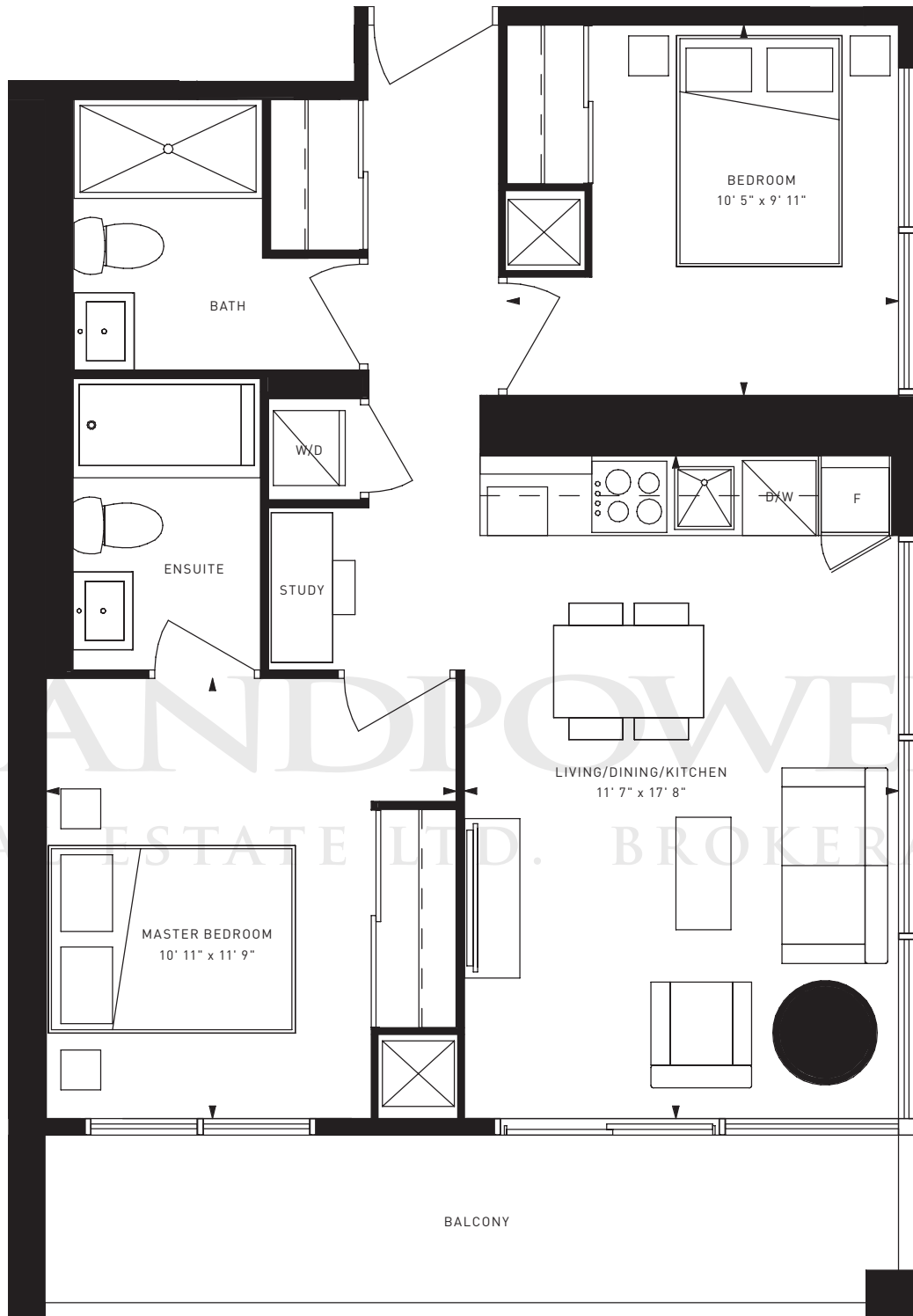
Balconies are exclusive use common elements, and the location and size may be subject to change without notice, including but not restricted to changes or variations between suites in exterior architectural conditions (dividers, metal paneling, shear walls, etc).



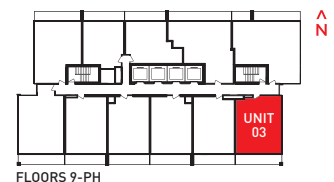
TC743
 2 BED + STUDY
 INTERIOR: 638 S.F.
 EXTERIOR: 105 S.F.



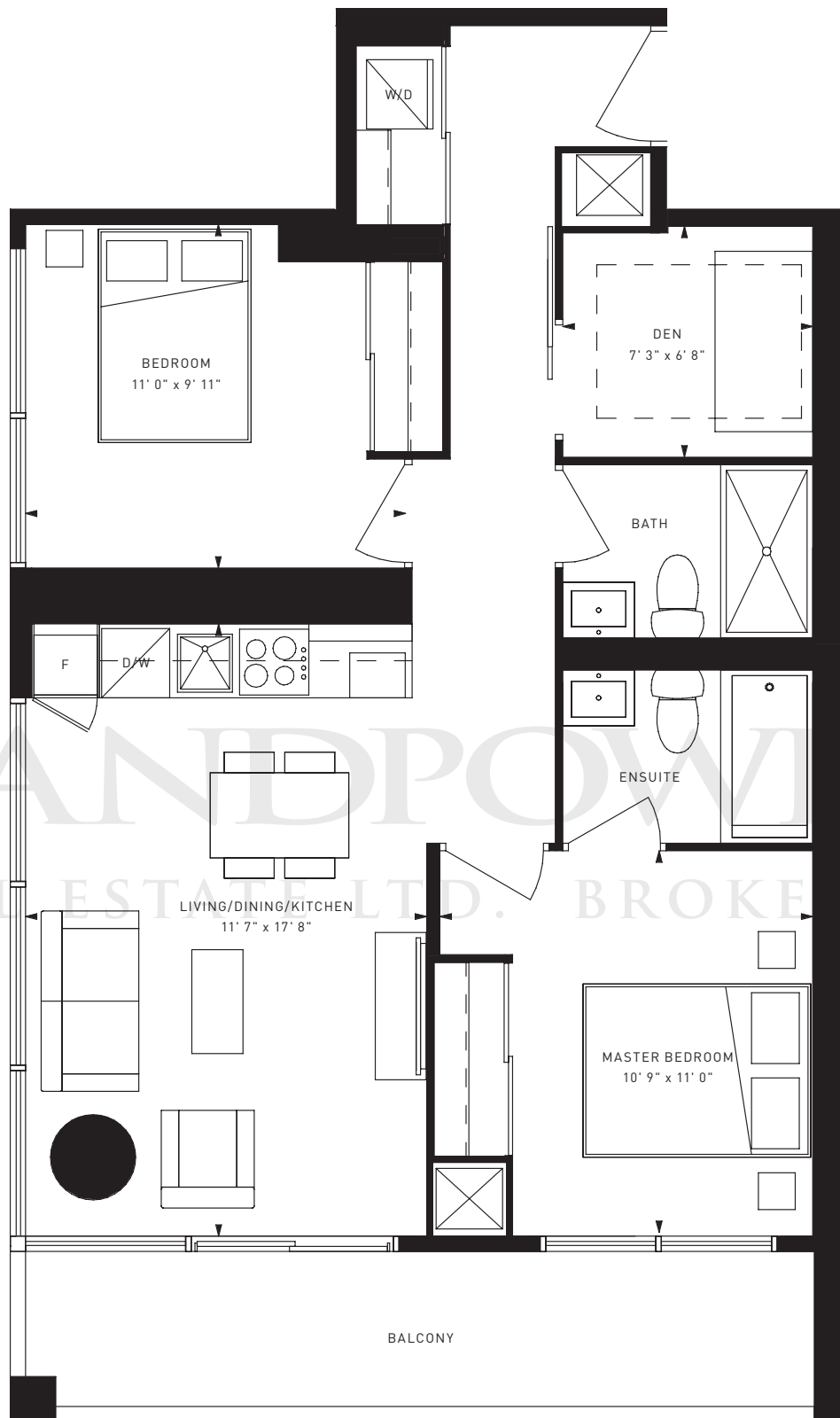
Balconies are exclusive use common elements, and the location and size may be subject to change without notice, including but not restricted to changes or variations between suites in exterior architectural conditions (dividers, metal paneling, shear walls, etc).



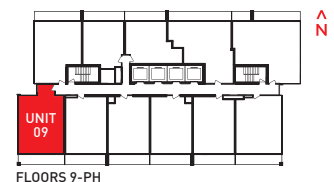
TC816
 2 BED + STUDY
 INTERIOR: 699 S.F.
 EXTERIOR: 117 S.F.



Balconies are exclusive use common elements, and the location and size may be subject to change without notice, including but not restricted to changes or variations between suites in exterior architectural conditions (dividers, metal paneling, shear walls, etc).



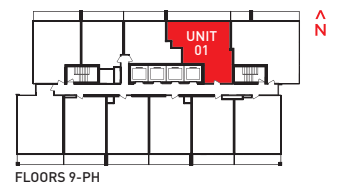
TC895
 2 BED + DEN
 INTERIOR: 778 S.F.
 EXTERIOR: 117 S.F.



Balconies are exclusive use common elements, and the location and size may be subject to change without notice, including but not restricted to changes or variations between suites in exterior architectural conditions (dividers, metal paneling, shear walls, etc).



TC979
 2 BED + DEN
 INTERIOR: 820 S.F.
 EXTERIOR: 159 S.F.



Balconies are exclusive use common elements, and the location and size may be subject to change without notice, including but not restricted to changes or variations between suites in exterior architectural conditions (dividers, metal paneling, shear walls, etc).

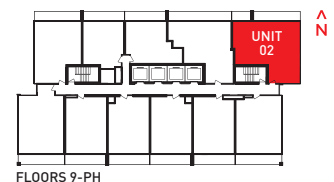


TC1120

3 BED

INTERIOR: 950 S.F.

EXTERIOR: 170 S.F.



Balconies are exclusive use common elements, and the location and size may be subject to change without notice, including but not restricted to changes or variations between suites in exterior architectural conditions (dividers, metal paneling, shear walls, etc).