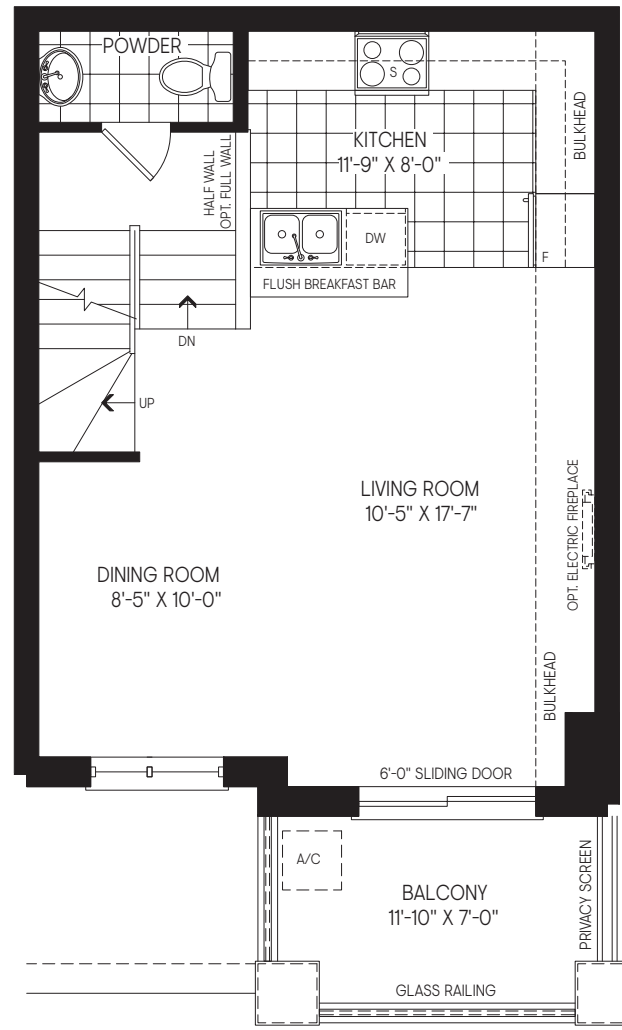




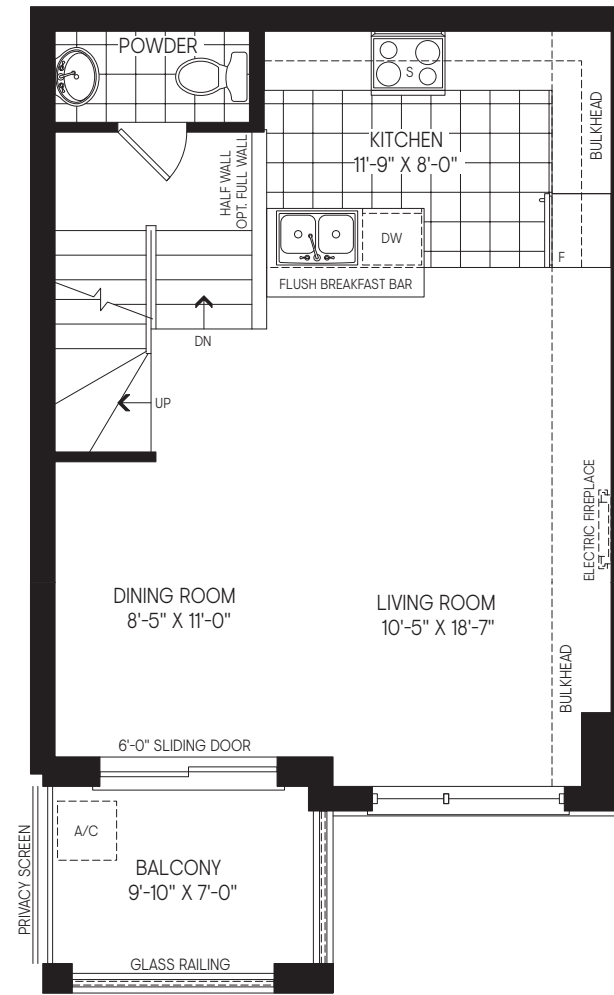
**THE TOWNS
BACK-TO-BACK TOWNHOMES - MOD
FLEX PLANS**



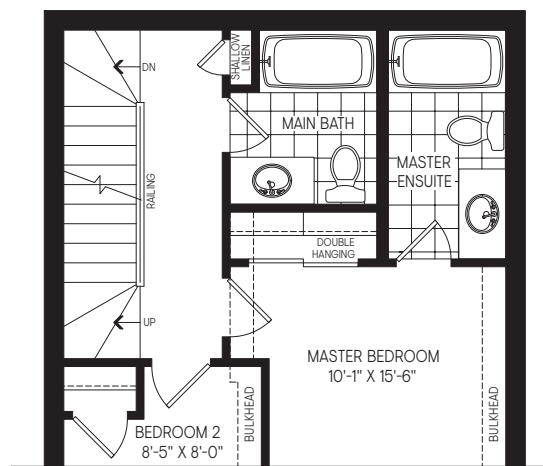
ELEVATION WC1 | M1



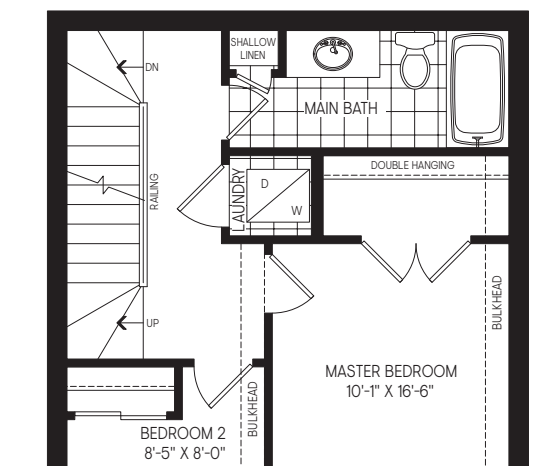
OPT. SECOND FLOOR PLAN
W/ ALT. KITCHEN ELEV. 'WC1'



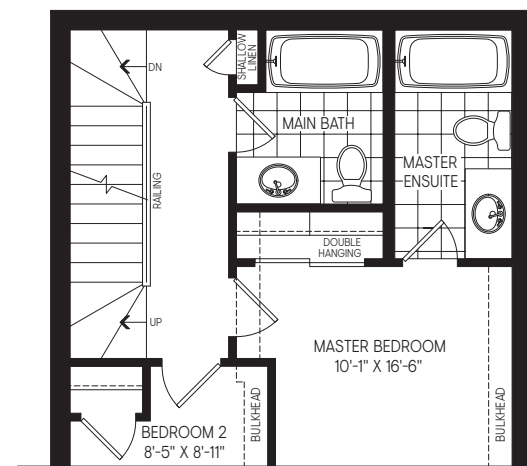
PARTIAL OPT. SECOND FLOOR PLAN
W/ ALT. KITCHEN ELEV. 'M1'



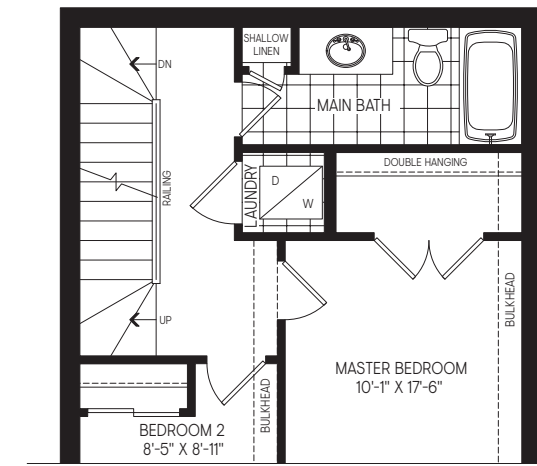
PARTIAL OPT. THIRD FLOOR PLAN
W/ MASTER ENSUITE
ELEV. 'WC1'



PARTIAL OPT. THIRD FLOOR PLAN
W/ LAUNDRY ELEV. 'WC1'



PARTIAL OPT. THIRD FLOOR PLAN
W/ MASTER ENSUITE
ELEV. 'M1'



PARTIAL OPT. THIRD FLOOR PLAN
W/ LAUNDRY ELEV. 'M1'

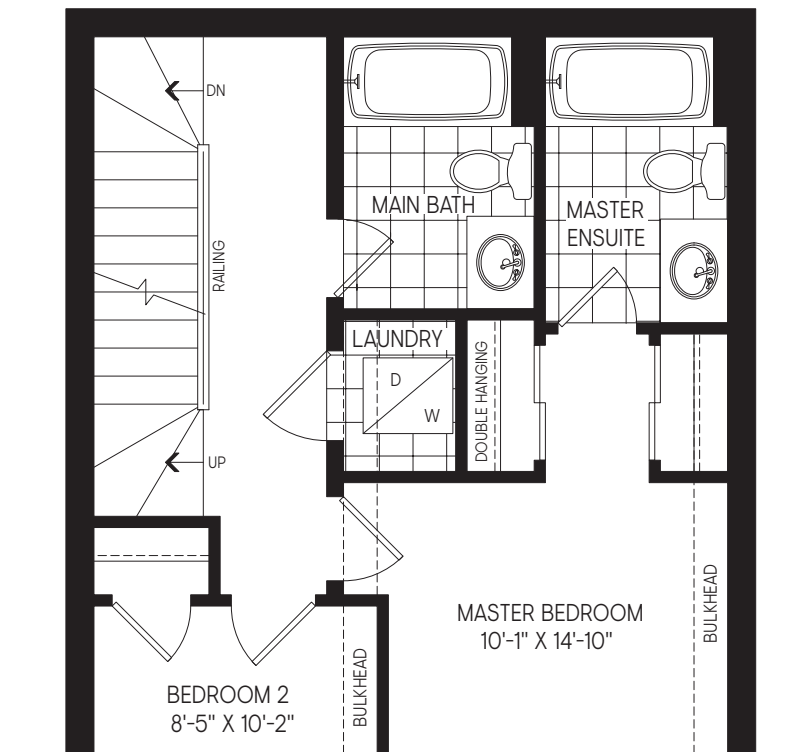
ROUGE 1 - MOD
BACK-TO-BACK TOWNS - MOD

ELEVATION WC1
1,283 SQ.FT.

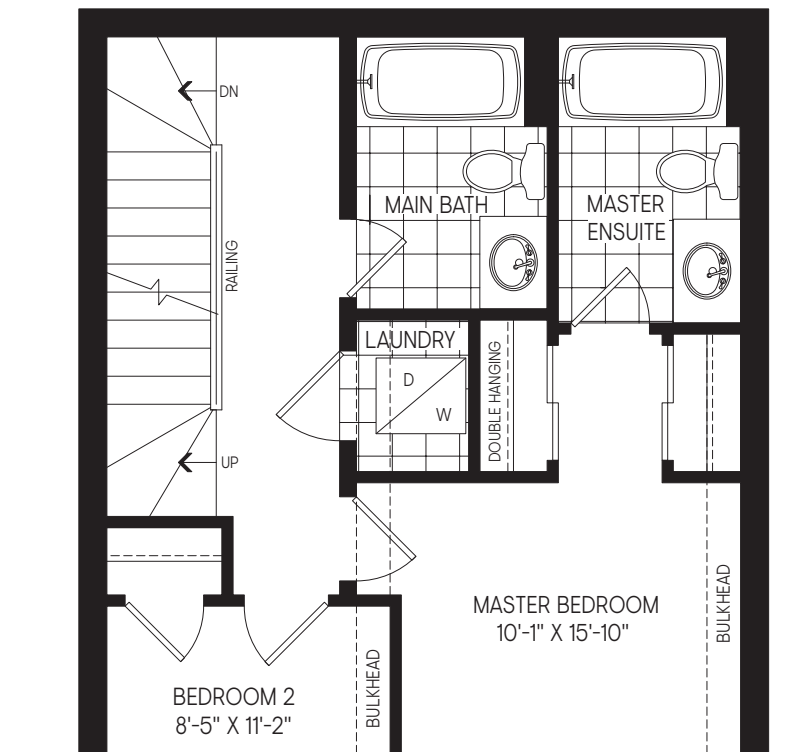
ELEVATION M1
1,327 SQ.FT.

All plans, dimensions and specifications are subject to change without notice. Actual usable floor space may vary from the stated floor area. Column locations, window locations and size may vary and are subject to change without notice. Renderings are artists concept and will change if required by site conditions. Plans, specifications and materials are subject to availability, substitution, modification without notice at sole discretion of Minto Communities Inc. & Metrovia. E. & O.E.

ELEVATION WC1 | M1



PARTIAL OPT. THIRD FLOOR PLAN
W/ LAUNDRY **ELEV. 'WC1'**



PARTIAL OPT. THIRD FLOOR PLAN
W/ LAUNDRY **ELEV. 'M1'**

ROUGE 2 - MOD
BACK-TO-BACK TOWNS - MOD

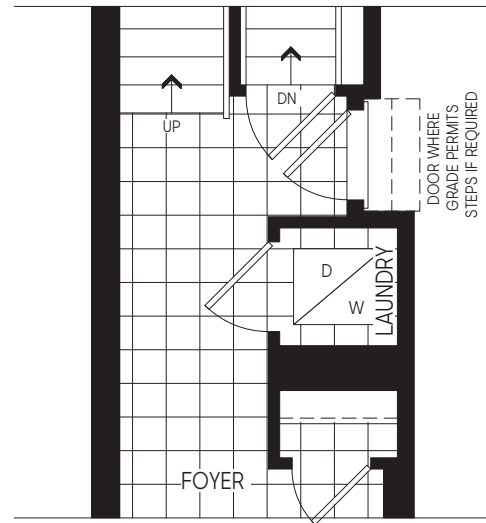
ELEVATION WC1

1,404 SQ.FT.

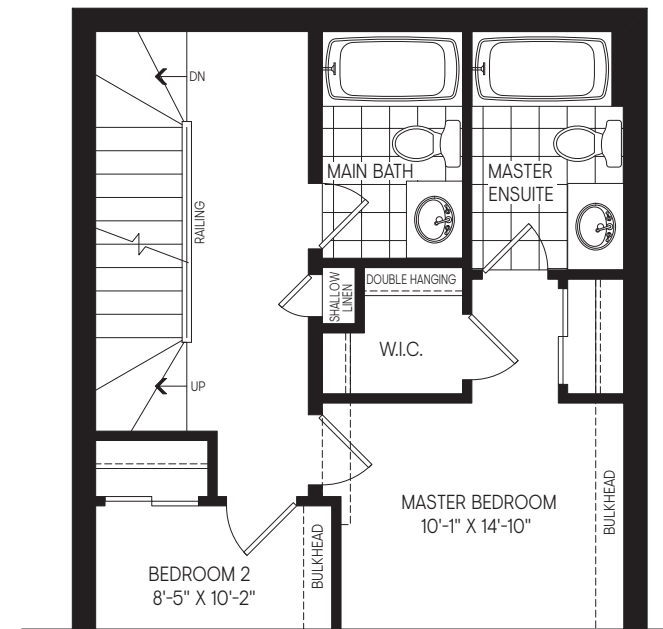
ELEVATION M1

1,449 SQ.FT.

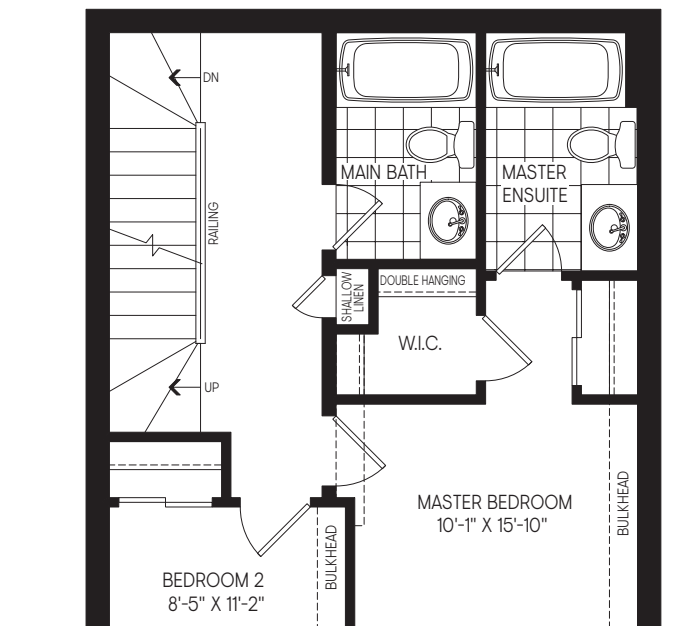
ELEVATION WC1 | M1



PARTIAL GROUND FLOOR
PLAN FOR OPT. THIRD FLOOR
ELEV. 'WC1' & 'M1'



PARTIAL OPT. THIRD FLOOR PLAN
W/ WALK-IN CLOSET
ELEV. 'WC1'



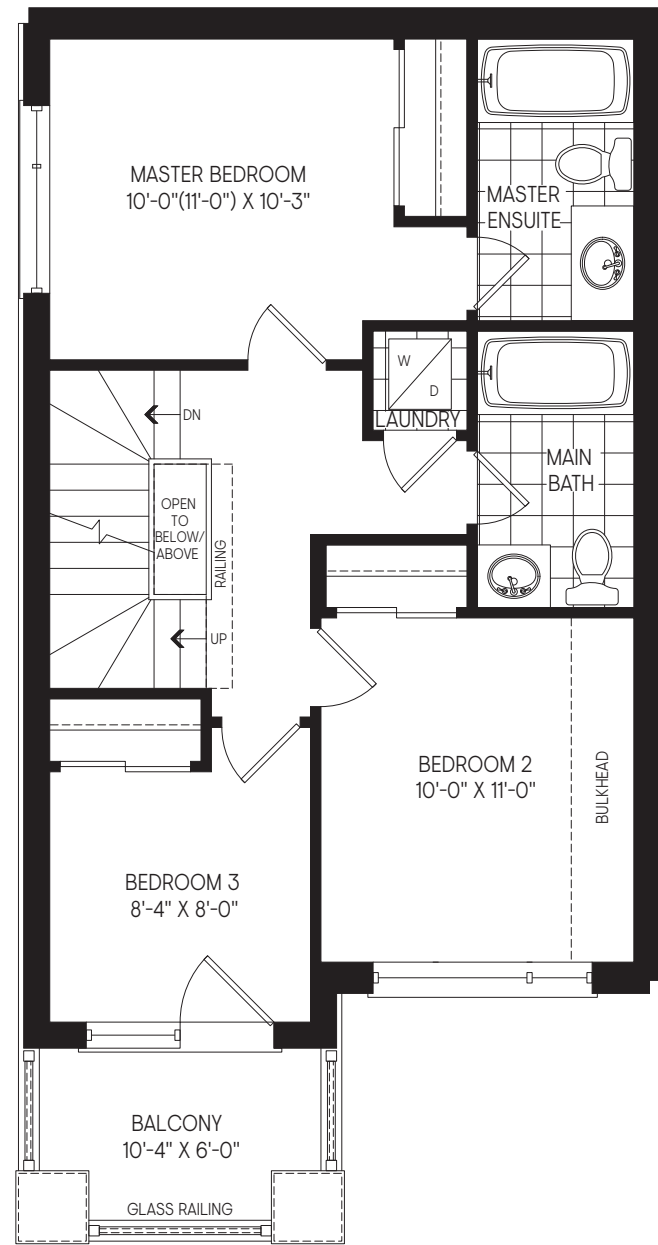
PARTIAL OPT. THIRD FLOOR PLAN
W/ WALK-IN CLOSET
ELEV. 'M1'

ROUGE 3 - MOD
BACK-TO-BACK TOWNS - MOD

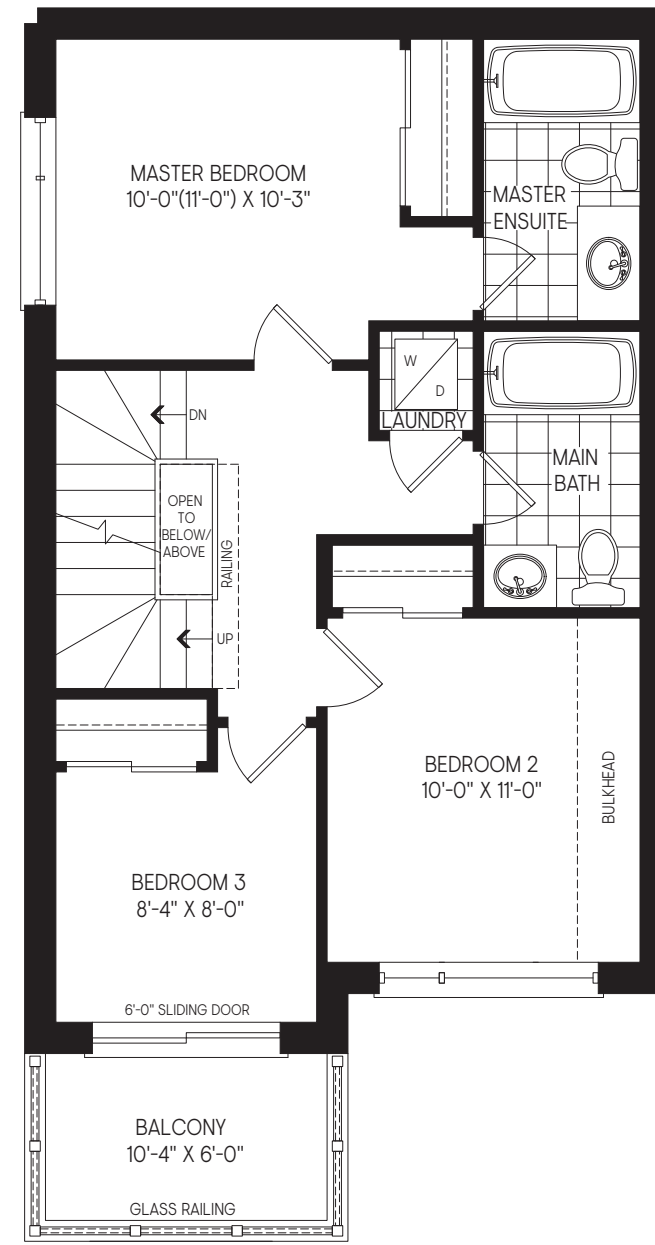
ELEVATION WC1
1,419 SQ.FT.

ELEVATION M1
1,464 SQ.FT.

ELEVATION WC3 | M2



OPT. THIRD FLOOR PLAN
W/ LAUNDRY ELEV. 'WC3'



OPT. THIRD FLOOR PLAN
W/ LAUNDRY ELEV. 'M2'

ROUGE END - MOD
BACK-TO-BACK TOWNS - MOD

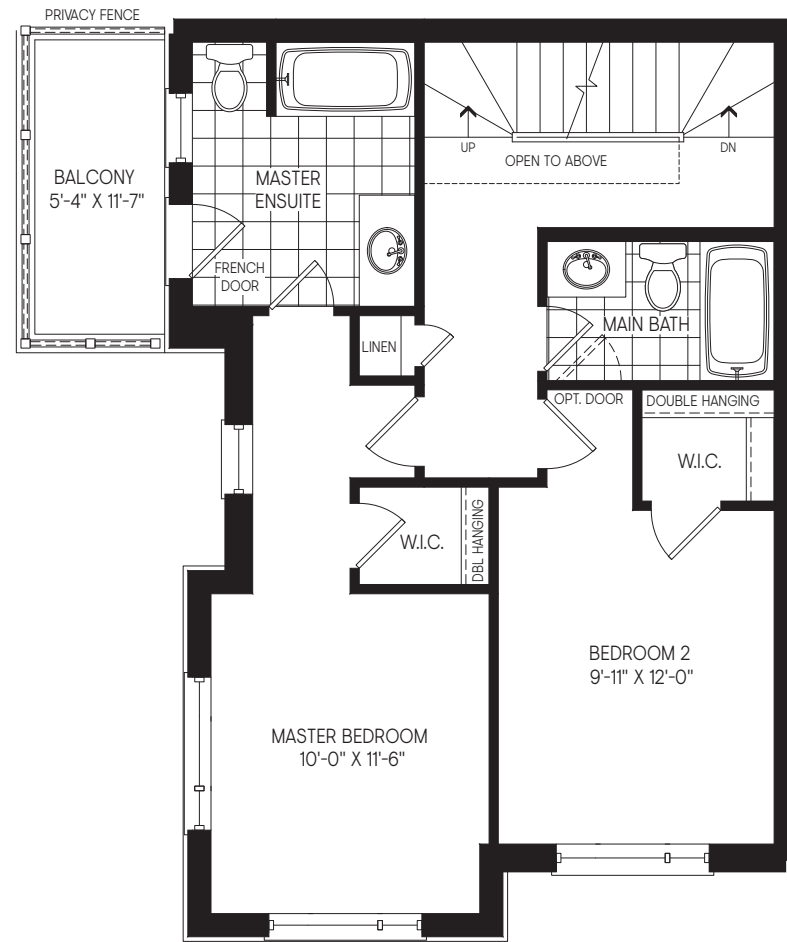
ELEVATION WC3

1,739 SQ.FT.

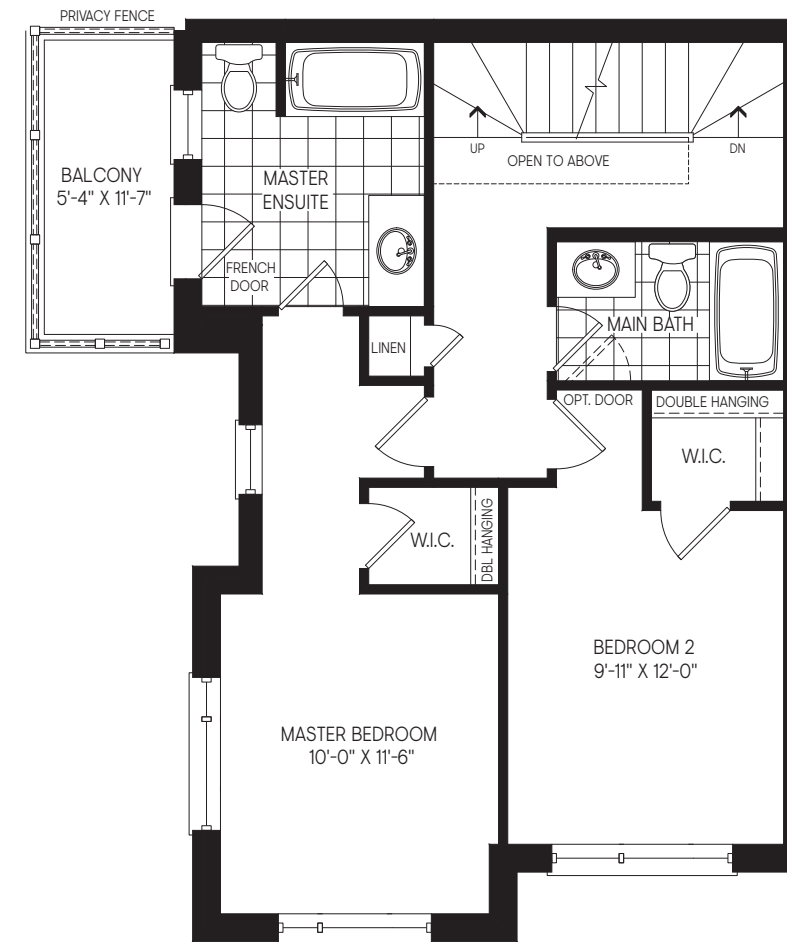
ELEVATION M2

1,746 SQ.FT.

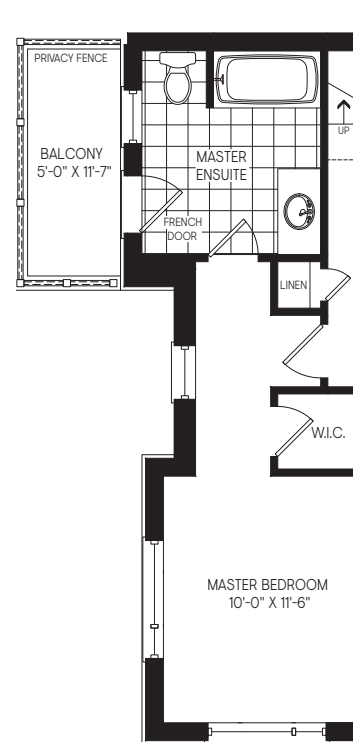
ELEVATION WC4 | WC5 | M3 | M4



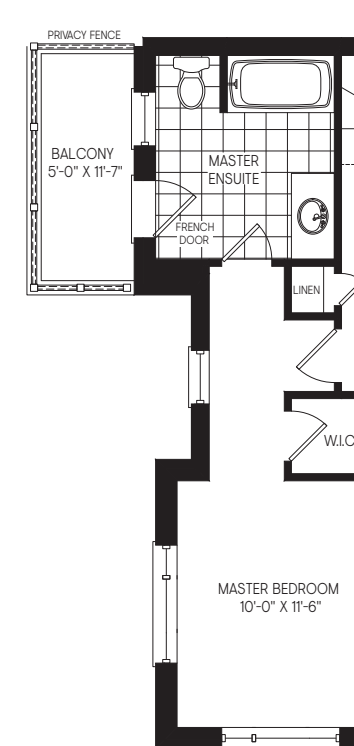
OPT. THIRD FLOOR PLAN W/ 2 BEDROOMS
ELEV. 'WC4'



OPT. THIRD FLOOR PLAN W/ 2 BEDROOMS
ELEV. 'M3'



PARTIAL OPT. THIRD FLOOR PLAN
W/ 2 BEDROOMS
ELEV. 'WC5'



PARTIAL OPT. THIRD FLOOR PLAN
W/ 2 BEDROOMS
ELEV. 'M4'

ROUGE CORNER - MOD
BACK-TO-BACK TOWNS - MOD

ELEVATION WC4 1,929 SQ.FT. ELEVATION WC5 1,929 SQ.FT.

ELEVATION M3 1,928 SQ.FT. ELEVATION M4 1,939 SQ.FT.

All plans, dimensions and specifications are subject to change without notice. Actual usable floor space may vary from the stated floor area. Column locations, window locations and size may vary and are subject to change without notice. Renderings are artists concept and will change if required by site conditions. Plans, specifications and materials are subject to availability, substitution, modification without notice at sole discretion of Mirto Communities Inc. & Metropla. E. & O.E.



METROPIA

All plans, dimensions and specifications are subject to change without notice. Actual usable floor space may vary from the stated floor area. Column locations, window locations and size may vary and are subject to change without notice. Renderings are artists concept and will change if required by site conditions. Plans, specifications and materials are subject to availability, substitution, modification without notice at sole discretion of Minto Communities Inc. & Metropia. E. & O.E.