



*Vintage Courtyard Homes*  
at Bayview Glen

LA ER

REAL ESTATE LTD. BROKERAGE



# The Essence of European Sophistication With a Courtyard Garden as Inspiration.

Within the exclusive neighbourhood of Richmond Hill's Bayview Glen, there is a sanctuary of exceptional living. Here, the essence of European sophistication is intricately woven into the fabric of this exquisite collection of freehold townhomes.



By looking at suburban living in a refreshing new light, Daniels has



designed a luxury townhome offering a new spatial relationship between the residence and the backyard. The result is an enhanced lifestyle that revolves around a truly inspired "urban" courtyard.

A synthesis of grandeur, gardens and courtyards, these residences create a total living experience. The courtyard is an extension of your residence, creating

outdoor living space in a beautiful Green Room.

Imagine pristine, landscaped garden blooms amidst terra-cotta planters with a patio crafted in tumbled pavers and the tranquility of a classic water fountain. An extraordinary setting, perfect for entertaining or relaxing. Integrated into this peaceful oasis is a discreet passage providing a link between your home, courtyard and garage.



A space that will only get better with time. The possibilities to personalize your courtyard are infinite.

And like a fine vintage wine, this space will only get better with time, as you add personal touches such as a hot tub, stone barbeque or outdoor dining area.



# Richmond Hill's Most Prestigious Neighbourhood. Daniels Most Privileged Townhomes.

Bayview Glen is Richmond Hill's upscale community of unparalleled stature. Today, Daniels introduces a classic new addition to this most prestigious neighbourhood, Vintage Courtyard Homes. These unprecedented luxury freehold townhomes offer something truly special for the discerning homebuyer.

"An integral part of the heritage of life on Bayview, these homes have been designed to be highly personal", says Niall Haggart, Director of Development at Daniels.

"Eliminating the garage at the front allows Daniels to create streetscapes evocative of a traditional urban home."

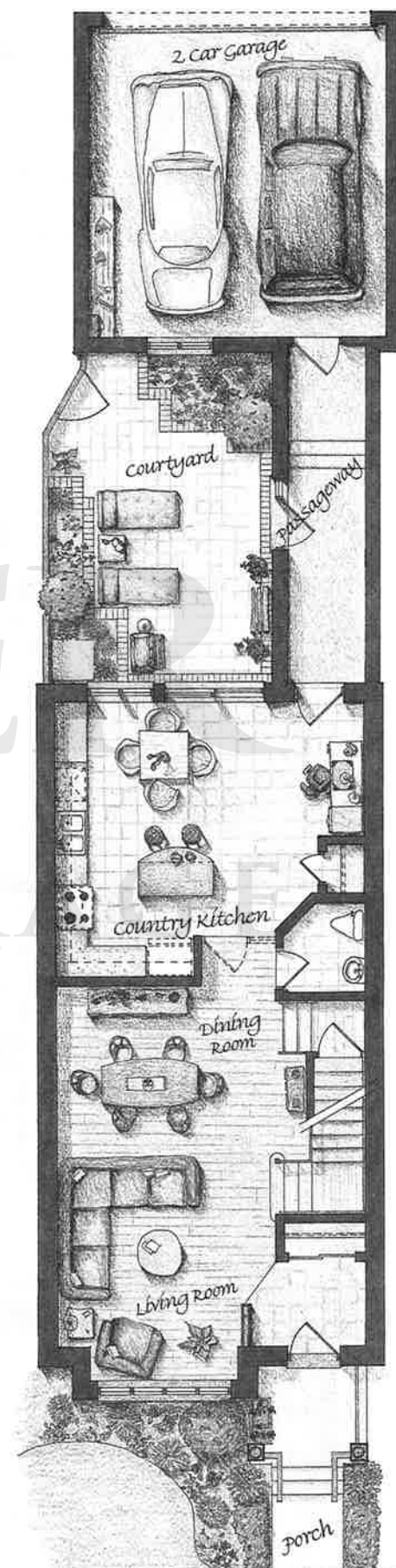
The architectural styling of the two and three storey Vintage Courtyard Homes is simple yet elegant.

Dramatic elevations feature steeply gabled rooflines, covered columned porches and second storey balconies, dotted with Victorian accents.

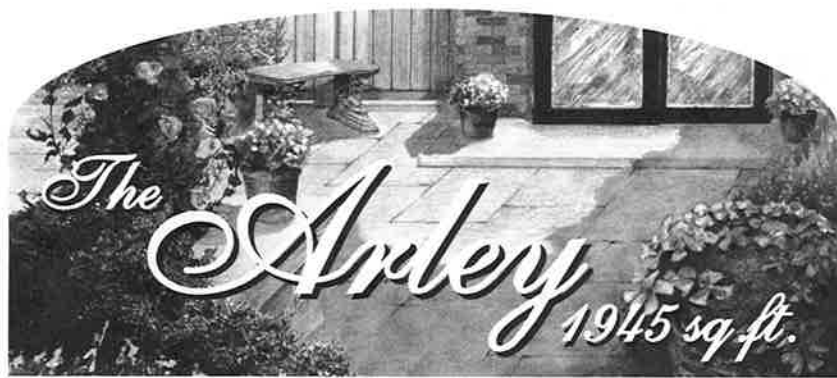
With the garage out of the picture, there is a new freedom to design more distinctive living spaces within.

"You will feel a sense of timelessness as you enter your residence", says John de Valence, architect, "as expressed by elegant 9' ceilings, generous, flowing open spaces and an abundance of windows, allowing more light to grace your living space".

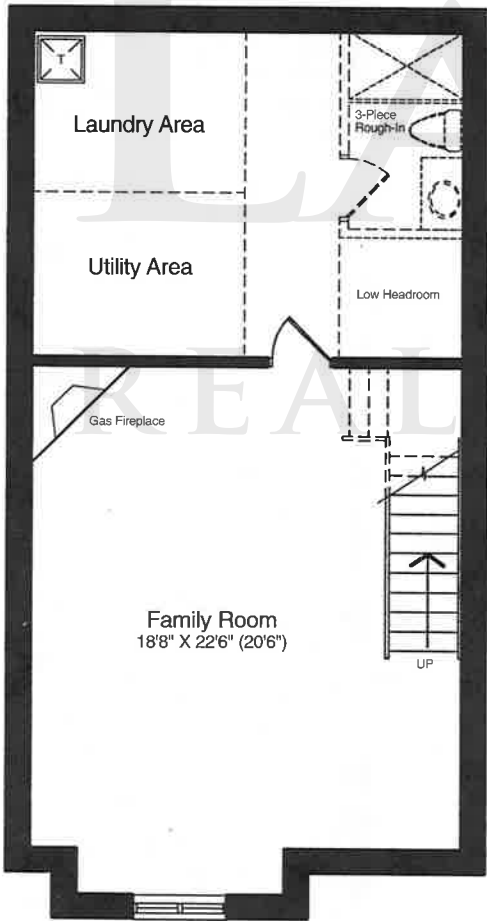
"Pride of place is at the heart of this inspired collection of residences", says John. "By designing Vintage Courtyard Homes with an emphasis on quality in design, workmanship and materials, Daniels creates unprecedented townhome living."



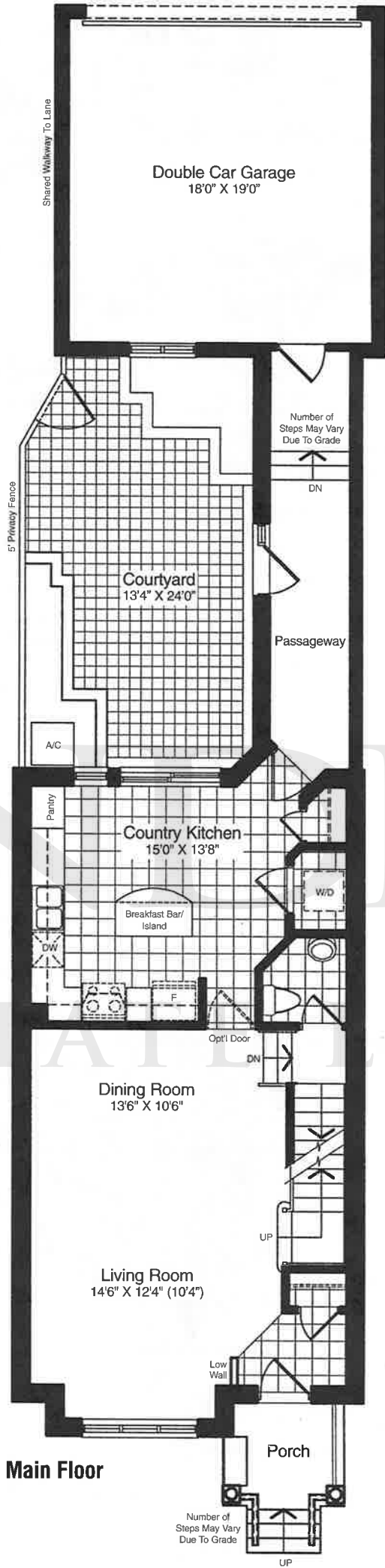




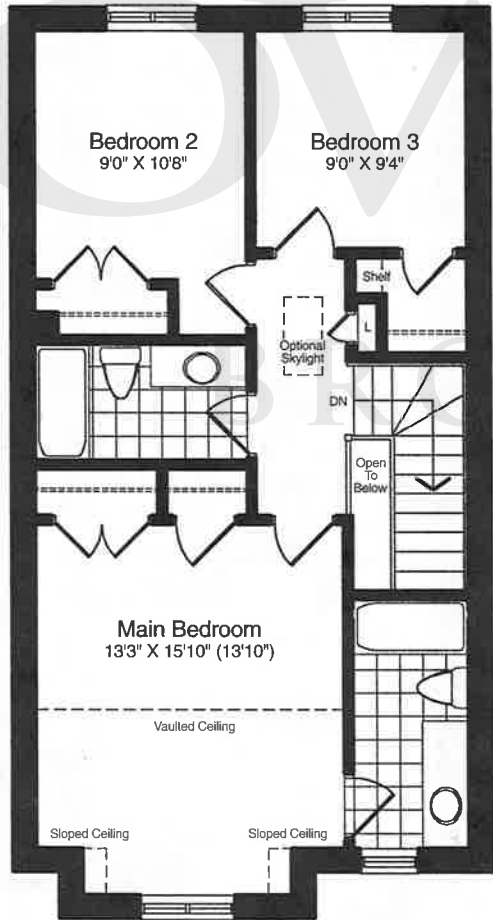
The gardens at Arley Hall were created between 1840 and 1860. After five generations they remain largely unchanged and feature extensive formal hedges, topiary, herbaceous plantings and long avenues of sculpted trees.



Lower Level



Main Floor



Second Floor

Enter a new level of elegance and charm. This inviting design evokes images of a fine old English home, with an inviting demeanor and classic styling. Step into a wonderful, welcoming space, filled with light and elegant 9' ceilings. Your marble tile entrance leads to open living and dining areas. The bright country kitchen is a family gathering place with a wonderful view of the courtyard, your Green Room.

Notice the fully enclosed passageway linking the home, courtyard and double car garage. The basement features a finished family room with a coxy gas fireplace. The second floor features a main bedroom with lovely ensuite and two secondary bedrooms with a separate bathroom. And everywhere, light adds to the spacious feeling of this charming design.

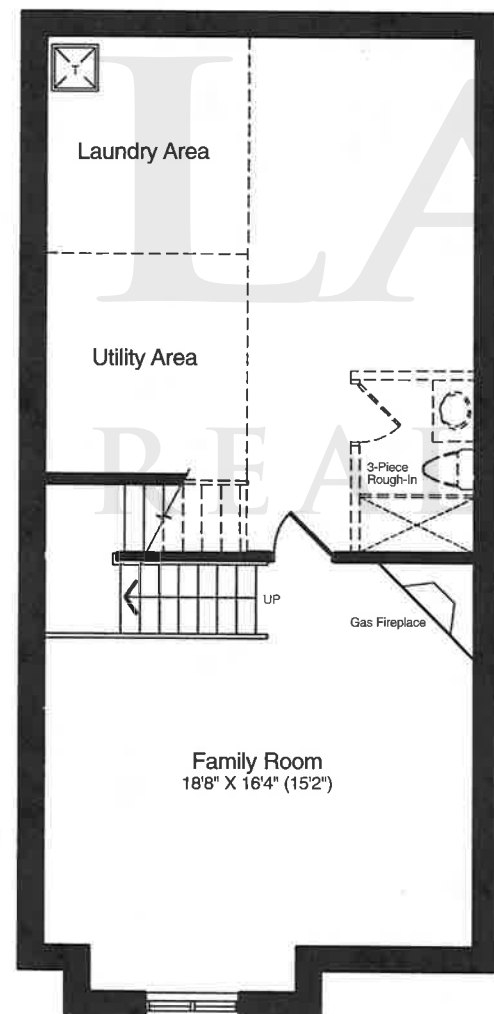
Room dimensions, window configurations and overall floor area may vary with final construction documents. E.&O.E.



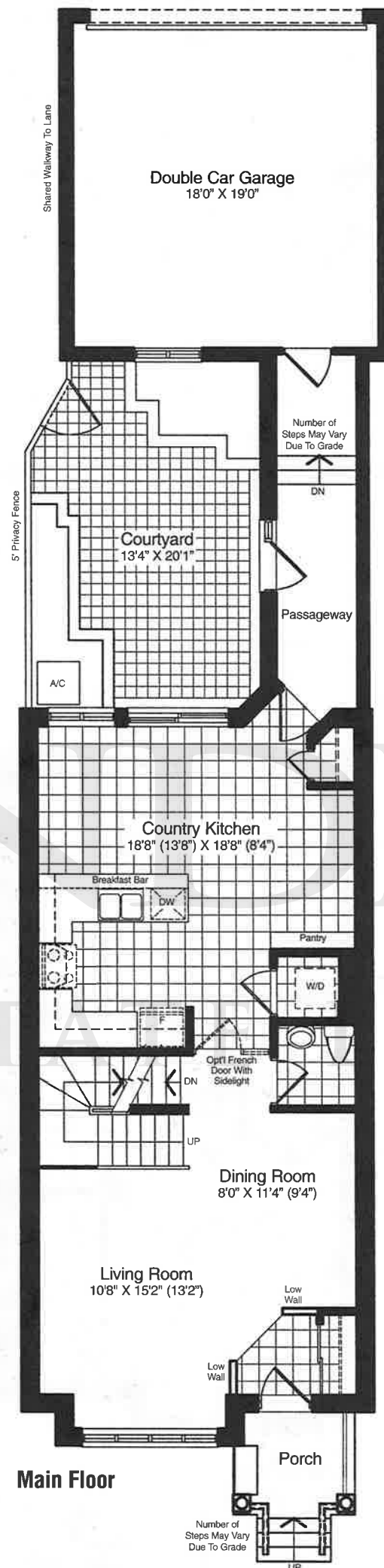




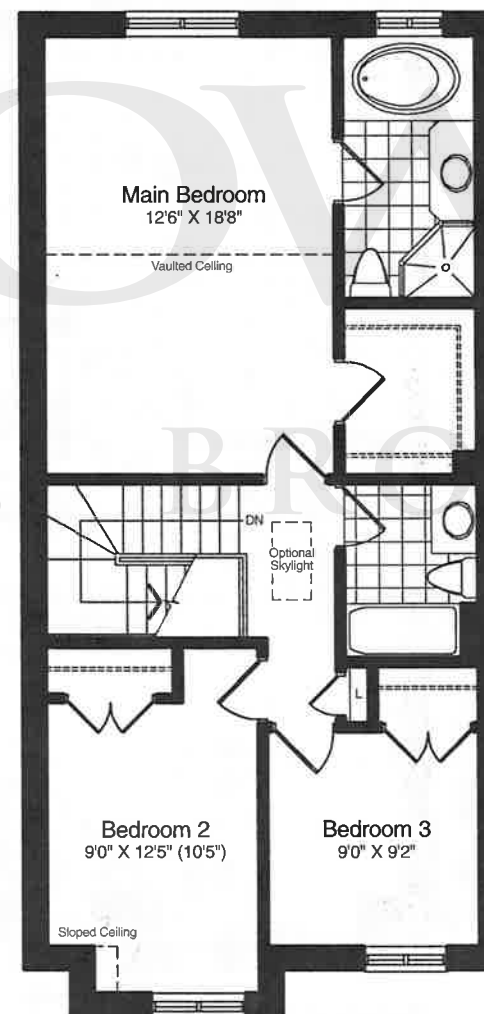
*Bennington Lordship is an estate setting with extensive gardens located on a site that once was the home of a large palace during Saxon times. Today a manner house stands on these remarkable lands that overlook a sweeping array of colourful varieties that bloom throughout the year.*



**Lower Level**



**Main Floor**



**Second Floor**

*Grand and gracious living space. Your first glimpse of home is a sweeping Victorian facade, complemented by a covered porch, the perfect invitation into your main foyer. From here, you are greeted by a dramatic living space where light pours into the formal living and dining room. Pass through optional French doors into a grand country kitchen that in turn opens out to your inspired courtyard retreat. The passageway provides shelter from the elements and will also offer additional storage space.*

*Downstairs the family will warm up to a gas fireplace. The second floor features your main bedroom with walk-in closet and a luxury ensuite complete with soaking tub and separate shower. For family and guests, there are two other bedrooms with a separate bathroom.*

Room dimensions, window configurations and overall floor area may vary with final construction documents. E.&O.E.



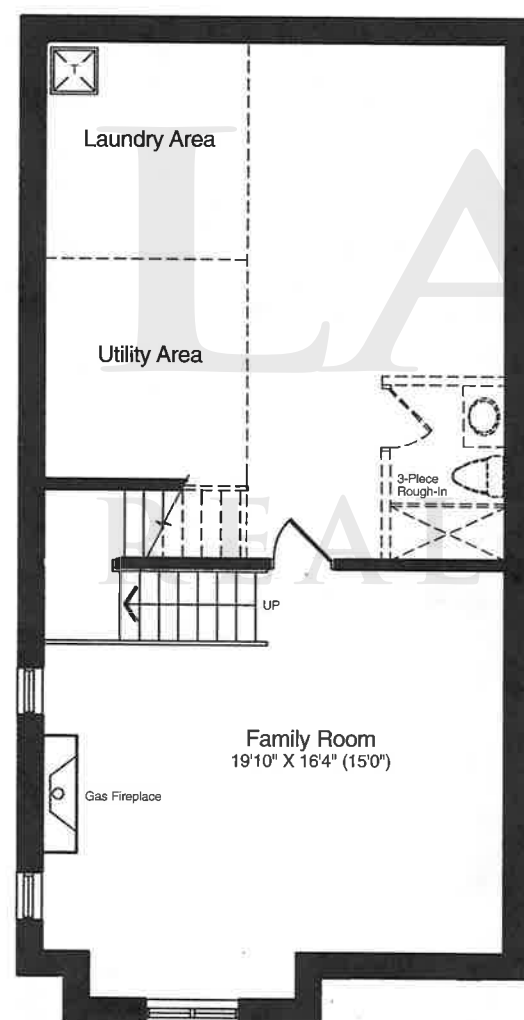
Model B ARTIST'S CONCEPT



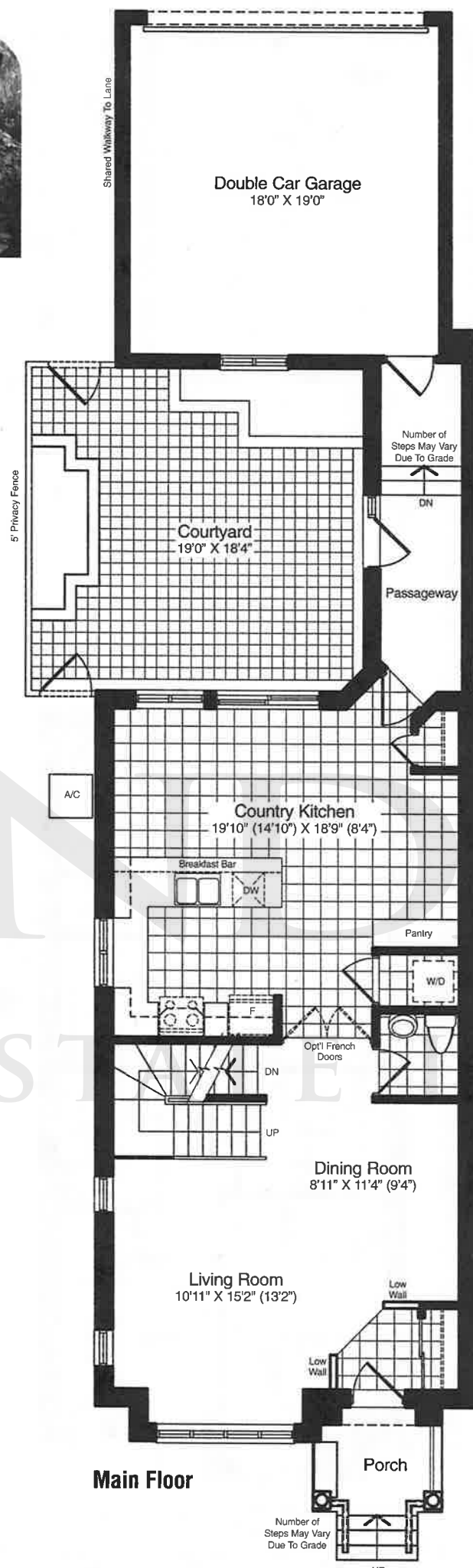


*The Chastleton*  
2201 sq. ft.

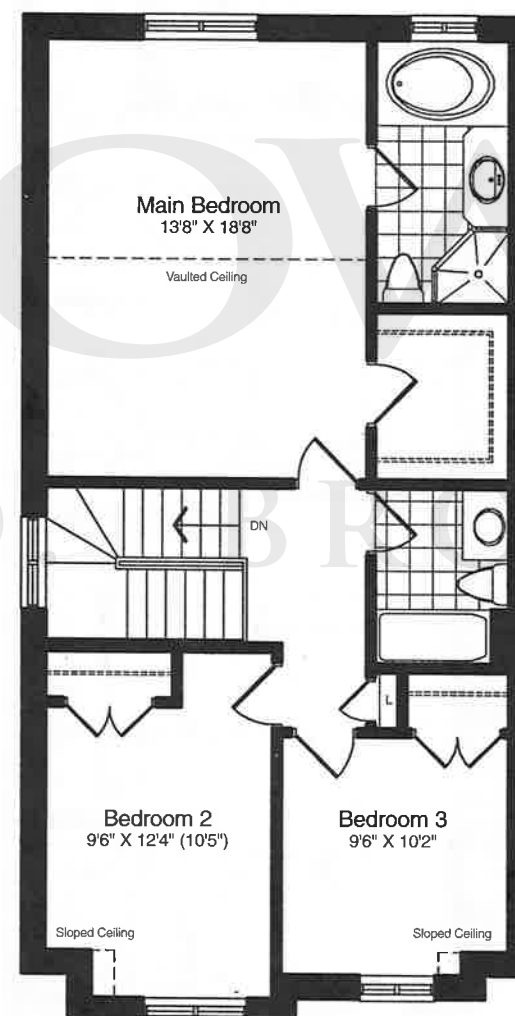
*Chastleton Manor in Oxford, a 17th century manor house, reposes on a hill overlooking a tiny hamlet. It is one of England's finest historic houses and includes topiary figures dating from the early 18th century.*



**Lower Level**



**Main Floor**



**Second Floor**

*A classic, light filled residence. Elegant, dignified, and welcoming, the Chastleton is a celebration of classic Victorian design in harmony with a fresh contemporary attitude. The formal living and dining room greet you as you enter the home, enhanced by the drama of high ceilings. The country kitchen offers an eat in area as well as sitting area, showered in natural light through wide patio doors. The family room is located downstairs and includes a gas fireplace. Upstairs, the main bedroom features a walk-in closet and lavish ensuite, and overlooks the courtyard garden. Secondary bedrooms are at the front of the home.*

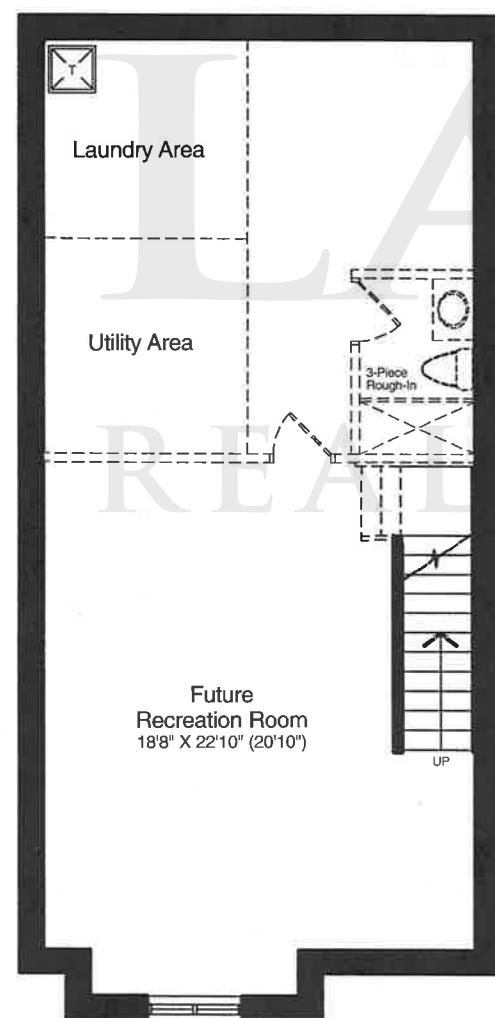
Room dimensions, window configurations and overall floor area may vary with final construction documents. E.&O.E.



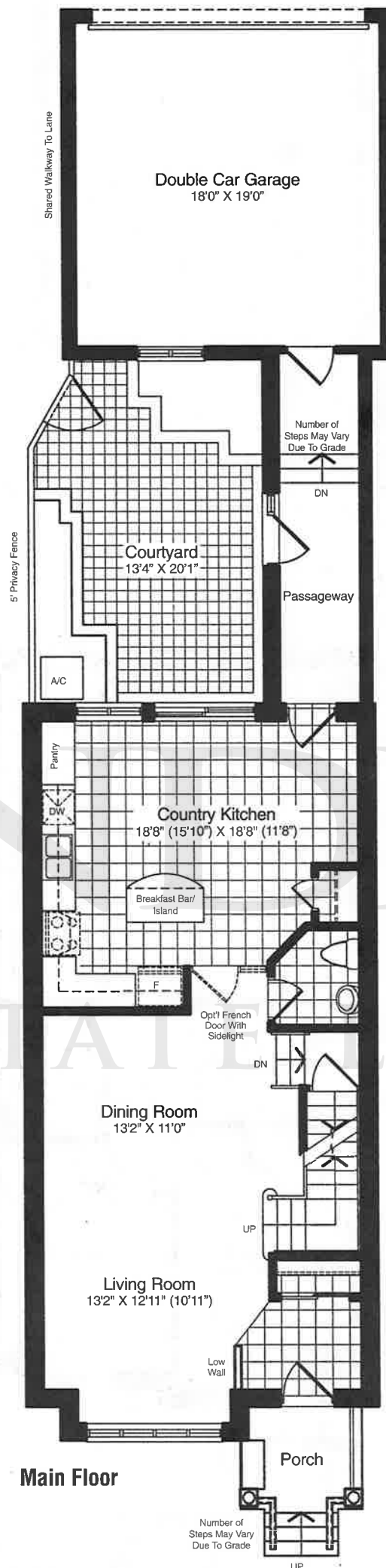




The manner house of Dorney dates back to the 15th century and has passed from father to son in unbroken succession since 1600. A double bank of topiary hedges screens the manner house and is decorated with sculpted birds which sit perched above.

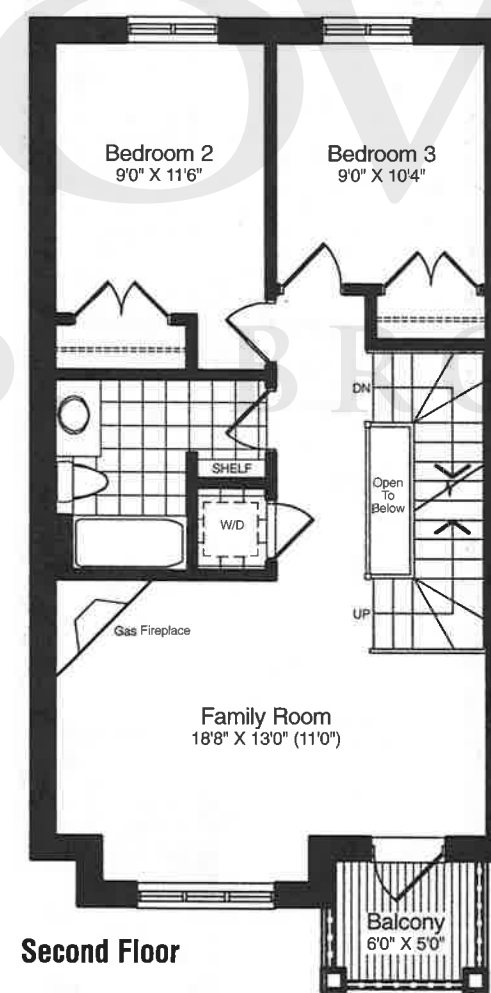


Lower Level



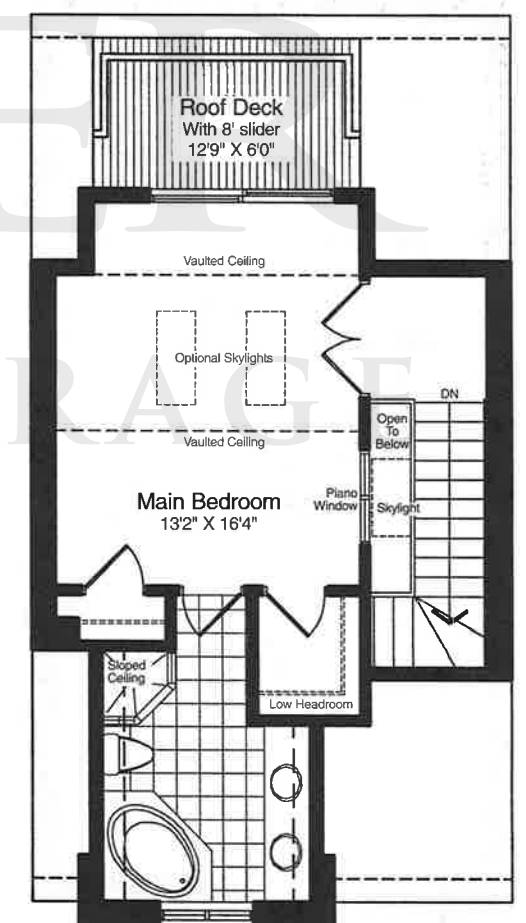
Main Floor

Inspired by classic architecture. The promise of dramatic living is glimpsed through the gracious, full height windows and at once fulfilled as you enter this stunning three storey residence. Formal, yet inviting, your living room and dining room are perfect for entertaining or casual living. Pass by a convenient powder room into an outstanding country kitchen with an island/breakfast bar and a panoramic view of the courtyard garden.



Second Floor

The second floor features an inviting family room with a gas fireplace and front balcony. Two comfortable bedrooms complete this floor. Rise up to an inspired private main bedroom retreat with vaulted ceiling, walk-in closet, lavish ensuite, and a stunning roof deck.



Third Floor

Room dimensions, window configurations and overall floor area may vary with final construction documents. E.&O.E.

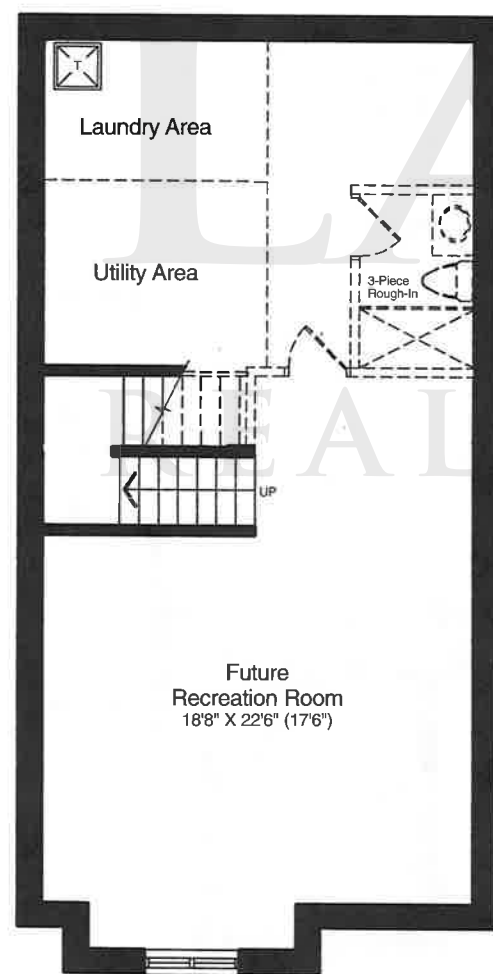




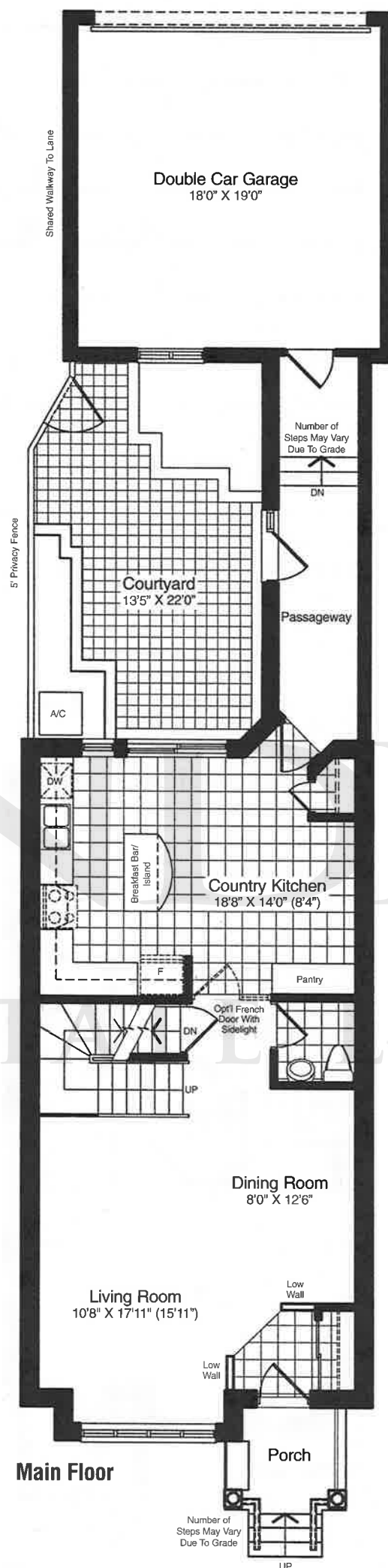


*The gardens of the Elmhurst estate take their inspiration from Italian horticulture.*

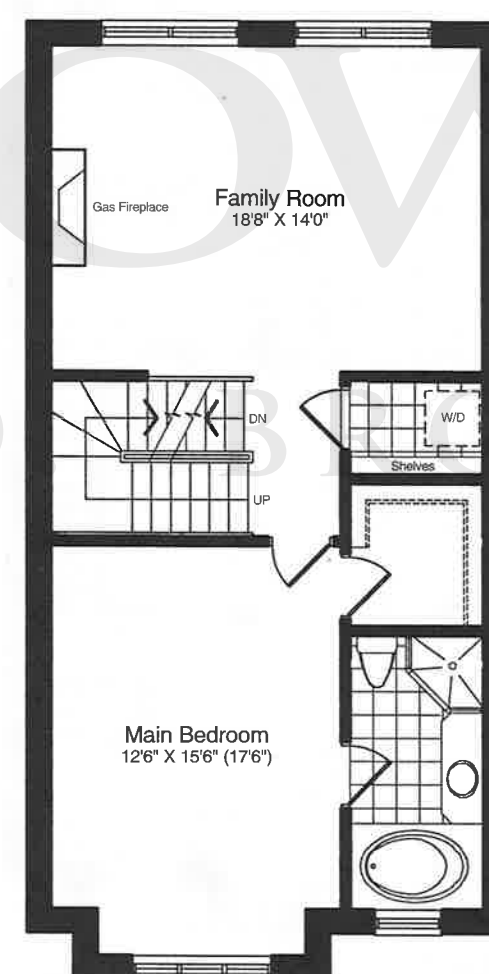
*Overlooking a wide river valley, the lands incorporate an engaging view of terraces highlighted with rose gardens and numerous decorative pillars.*



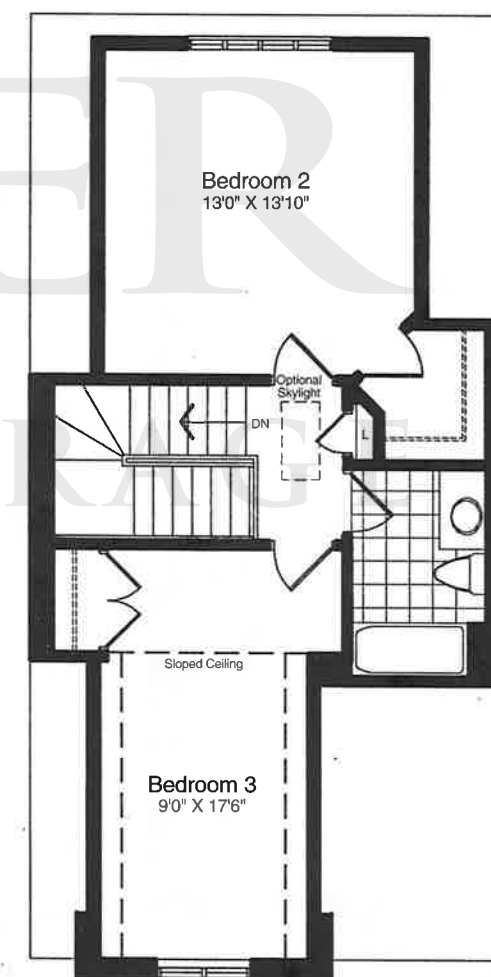
**Lower Level**



**Main Floor**



**Second Floor**



**Third Floor**

*An idyllic setting. Certain residences have an ability to captivate the imagination with just a glance. The Elmhurst has a splendid facade with distinctive arched transom windows, showering light in to the living and dining areas. Even your basement's future recreation room benefits from natural light resulting from a raised elevation and oversized windows. The heart of this idyllic family home is a beautiful country kitchen and breakfast room overlooking*

*the inspiring garden courtyard. The second floor features a family room the full width of the home, accented with gas fireplace and the main bedroom with luxury ensuite and large walk-in closet. The third floor offers two generous secondary bedrooms plus family bath.*

Room dimensions, window configurations and overall floor area may vary with final construction documents. E.&O.E.



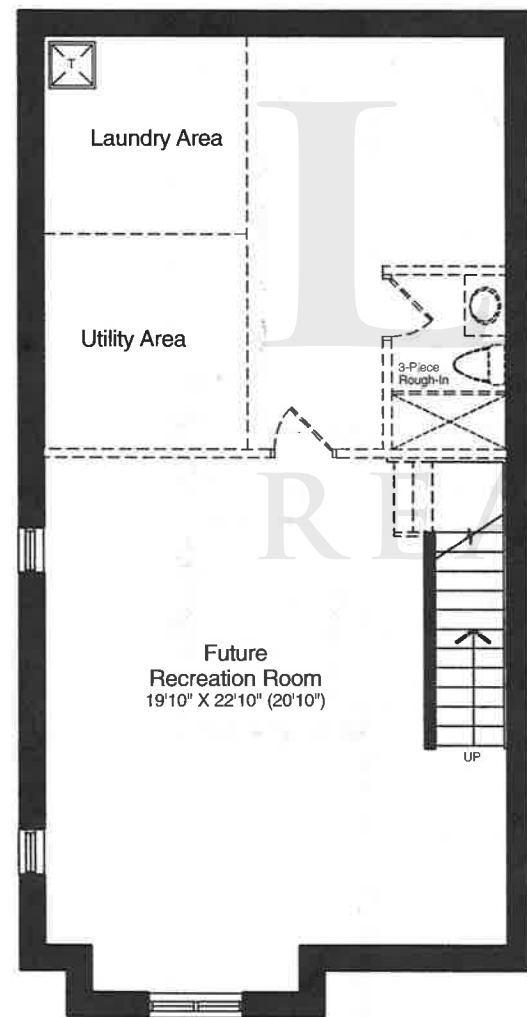
**Model E**

ARTIST'S CONCEPT

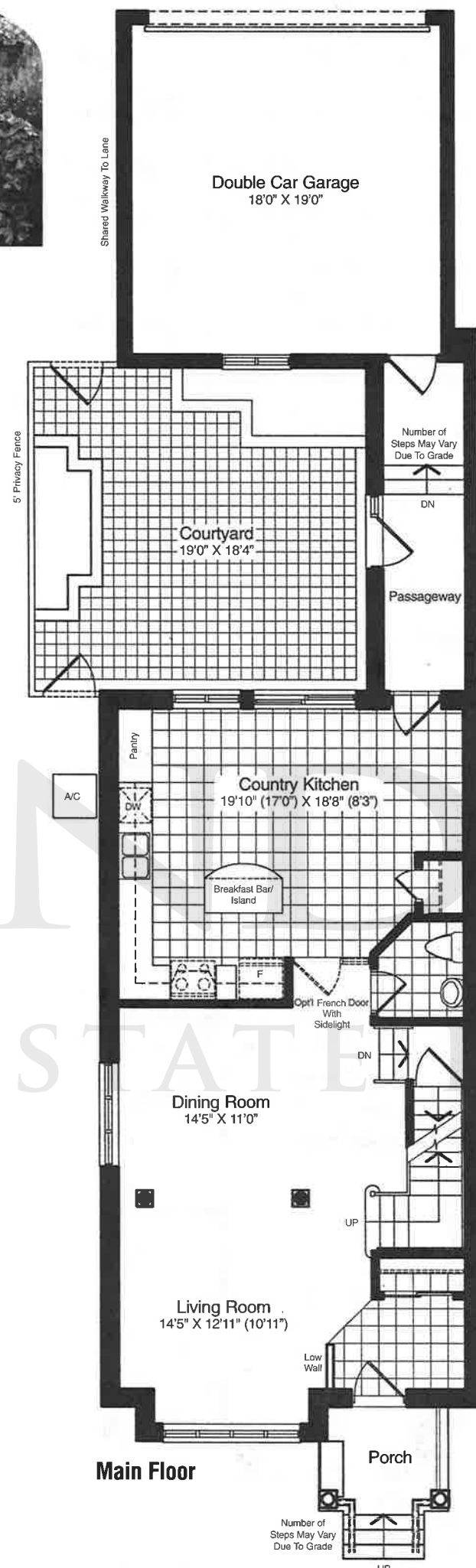




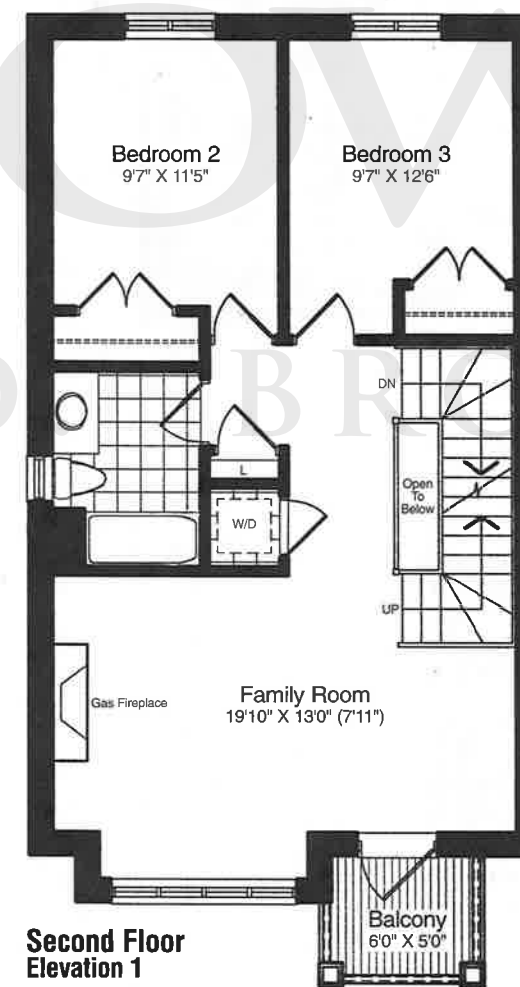
*Folly Farm is a farmhouse and garden built in the 1800's. Spring is an especially spectacular time for the garden which offers a magnificent display of daffodils and other colourful spring blooms.*



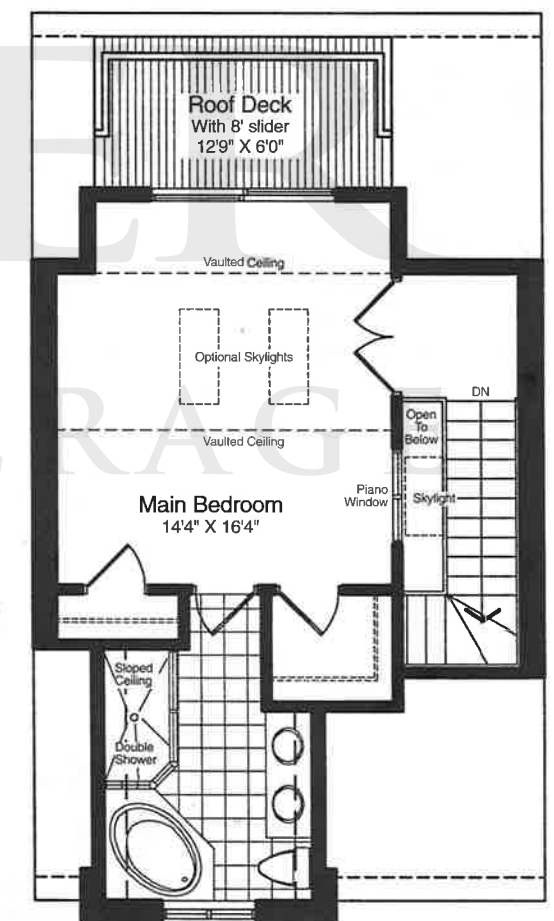
Lower Level



Main Floor



Second Floor  
Elevation 1



Third Floor  
Elevation 1

*Inspired design with a European flair. Dramatic describes this formal, yet inviting space. From the moment you step from the covered, columned porch into the home you'll find every detail has been considered, including a convenient main floor powder room. The living room and dining room are defined by columns. Your magnificent country kitchen with breakfast bar and island leads into your Green Room, providing outdoor living space.*

*The second floor has a wonderful family room with walk out roof deck as well as two other bedrooms, laundry and family bath. The third floor is dedicated to a main bedroom retreat with walk-in closet, finely appointed ensuite and a private roof deck.*

Room dimensions, window configurations and overall floor area may vary with final construction documents. E.&O.E.



Model F1

Model F2

ARTIST'S CONCEPT





Model C

Model A

Model B

Model C

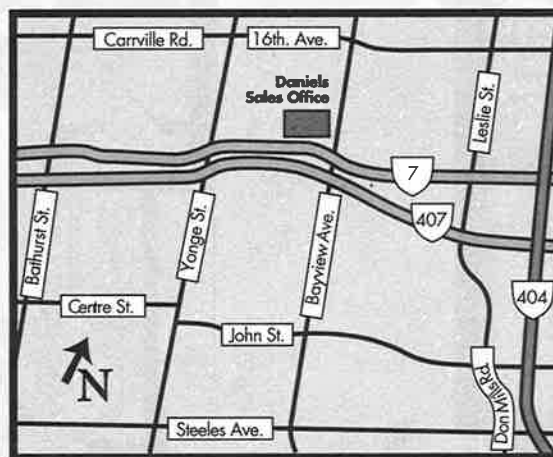


Model F1

Model D

Model E

Model F2



Monday to Thursday:

Noon to 8pm

Friday, Weekends & Holidays:

11am to 6pm

905-763-1760

**DANIELS**  
*there is a difference*