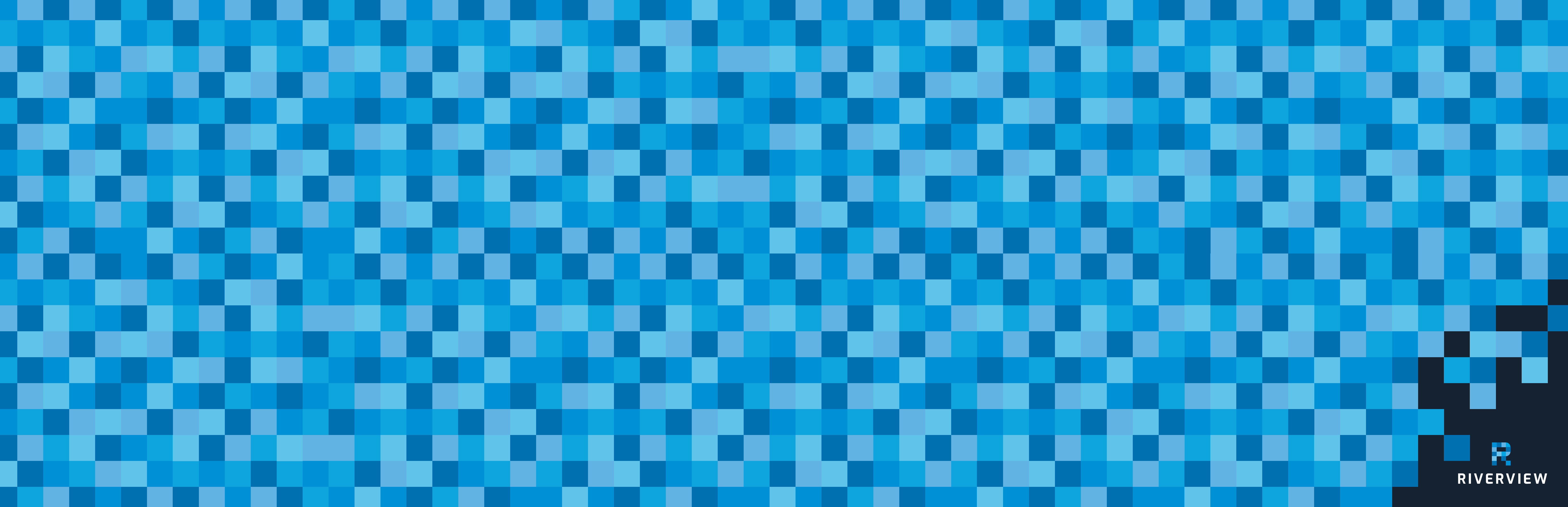


RIVERVIEW

RIVERVIEW BY TIMES GROUP







The architectural perspective is for illustration purposes only and as such the elevation shown may vary from the actual finish on site. E & O.E.



## RIVERVIEW IS UNPARALLELED



A landmark new address in Uptown Markham, Riverview is a stunning statement of success in one of Canada's most desired communities. Here you will discover the consummate balance of historic village charm and modern energy. Live a short stroll from superb restaurants, unique shops, world-class products at Whole Foods and fine wines at the neighbouring LCBO. Explore green swaths of river lands from Unionville's famed Toogood Pond to the Rouge River Valley right here in your own backyard. Smart. Sophisticated. Refined. Distinctive. Riverview.





#### PARK VIEW

Building C foreground, A & B  
connected by Amenity Pavilion



#### STREET VIEW

Amenity Pavilion with  
Rooftop Terrace

RIVERVIEW IS EXCLUSIVE

The architectural perspective is for illustration purposes only and as such the elevation shown may vary from the actual finish on site. E & O.E.

The architectural perspective is for illustration purposes only and as such the elevation shown may vary from the actual finish on site. E & O.E.

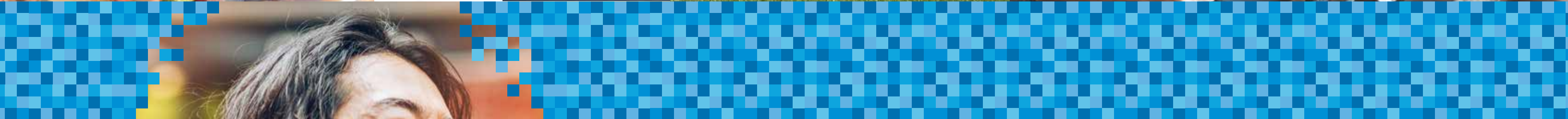




## RIVERVIEW IS FRESH

Newly unveiled, Riverview's elegant form is respectful of its privileged setting in the fashionable Uptown Markham development by renowned Times Group Corporation.

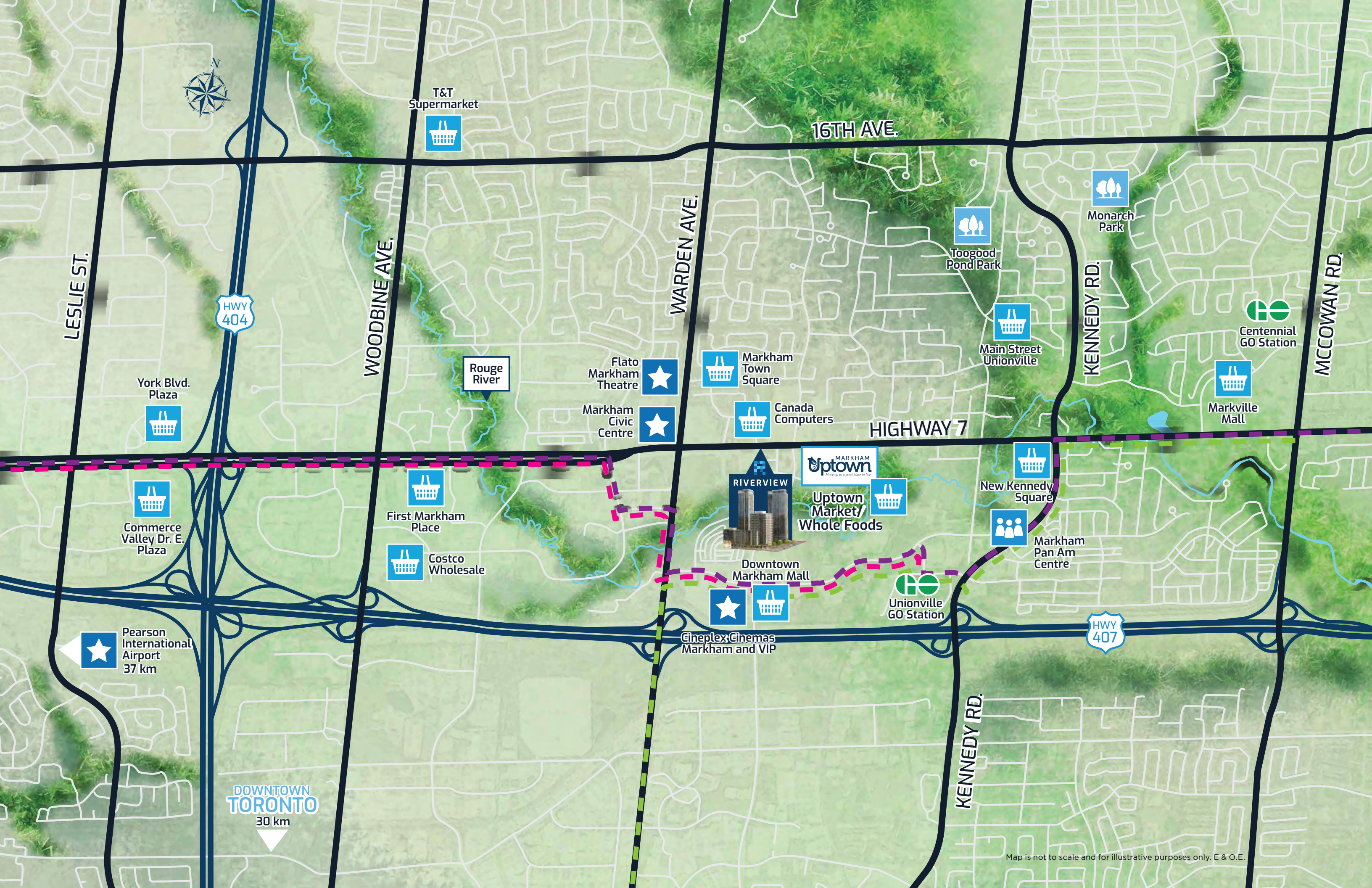




## RIVERVIEW IS VIBRANT

Life is all around you! Within a ten-minute walk, experience theatre and music at Flato Markham Theatre. Shop at Whole Foods, No Frills, Shoppers Drug Mart or the LCBO. Watch films at the Cineplex VIP Cinemas. Choose from over a dozen restaurants from casual to fine dining. You're walking distance to Bill Crothers Secondary School and the world class new Markham Pan Am Centre. And you're just a comfortable stroll from the charm of Main Street Unionville, the Varley Art Gallery or the parks and trails of Toogood Pond.





# RIVERVIEW IS CENTRAL

- LEGEND**
- SHOPPING & EATERIES
  - ARENAS
  - PARKS
  - OTHER AREAS OF INTEREST
  - VIVA PURPLE
  - VIVA PINK
  - VIVA GREEN
  - GO STATION

Riverview is central to so much that's important in your life. A whole world of elegant shopping is down the road at Markville Mall. Asian groceries at T&T Supermarket are right around the corner. And unique shops and restaurants are a short drive away at Pacific Mall and Splendid China Mall. Highway 7, the true "Main Street" of Markham, is right at your doorstep. In minutes you can be on Highway 407 or Highway 404 connecting you to anywhere you need to go. Pearson Airport is just 30 minutes away, and you can even get to downtown Toronto in half an hour.



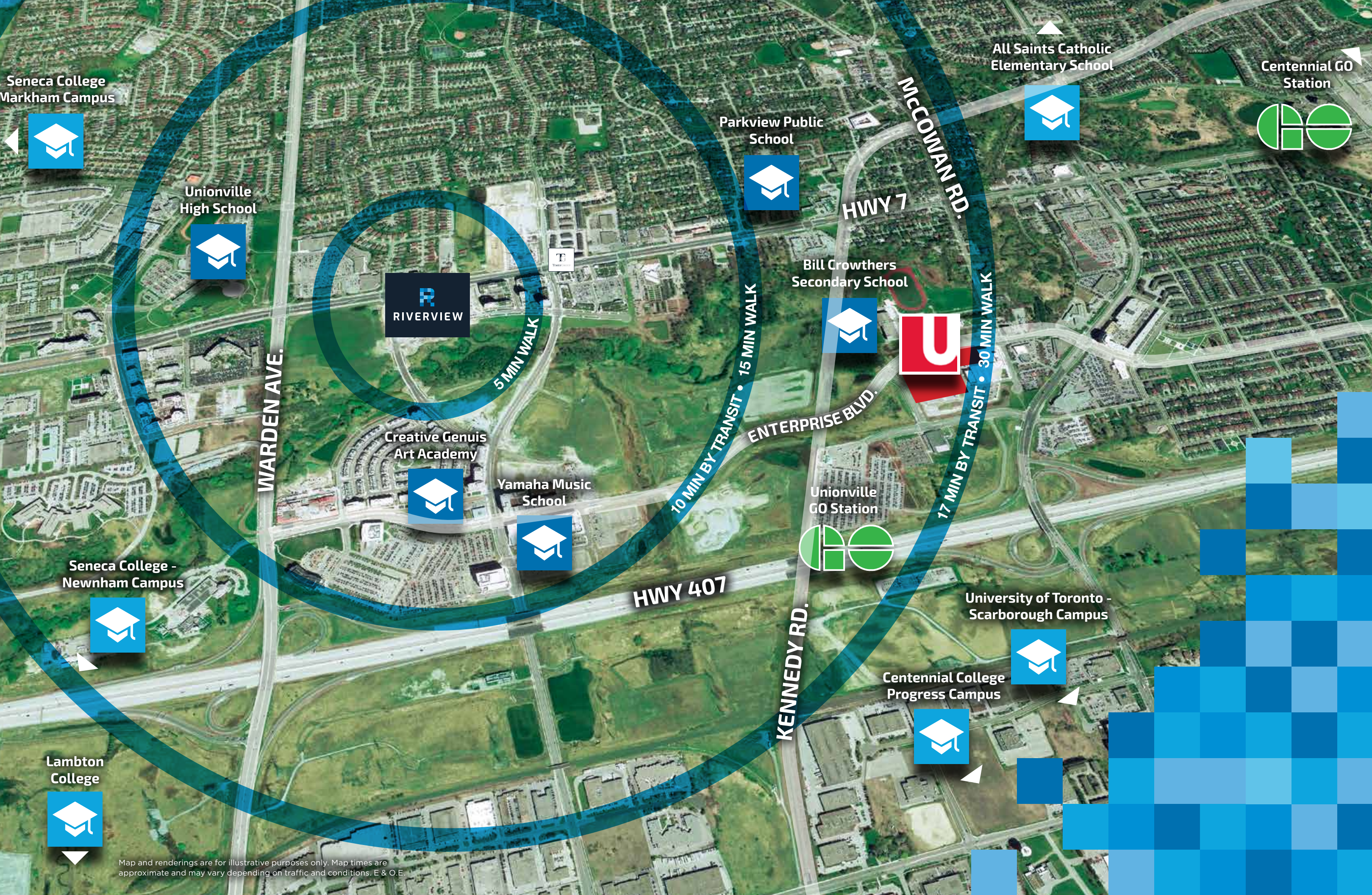


## GO PLACES WITH YRT/VIVA



When you live at Riverview, YRT/Viva transit service is right outside your door, ready to take you to the Subway, the GO Station or throughout York Region. There are also convenient connections to Peel and Durham Transit. In addition, Mobility Plus provides door-to-door, accessible public transit service for people with disabilities. You can even take your bike with you, because every YRT/Viva bus is equipped to hold bicycles!





## STEP UP WITH HIGHER LEARNING



When you live at Riverview, opportunities for higher learning are so close.

The brand-new York University Markham Campus is right around the corner.

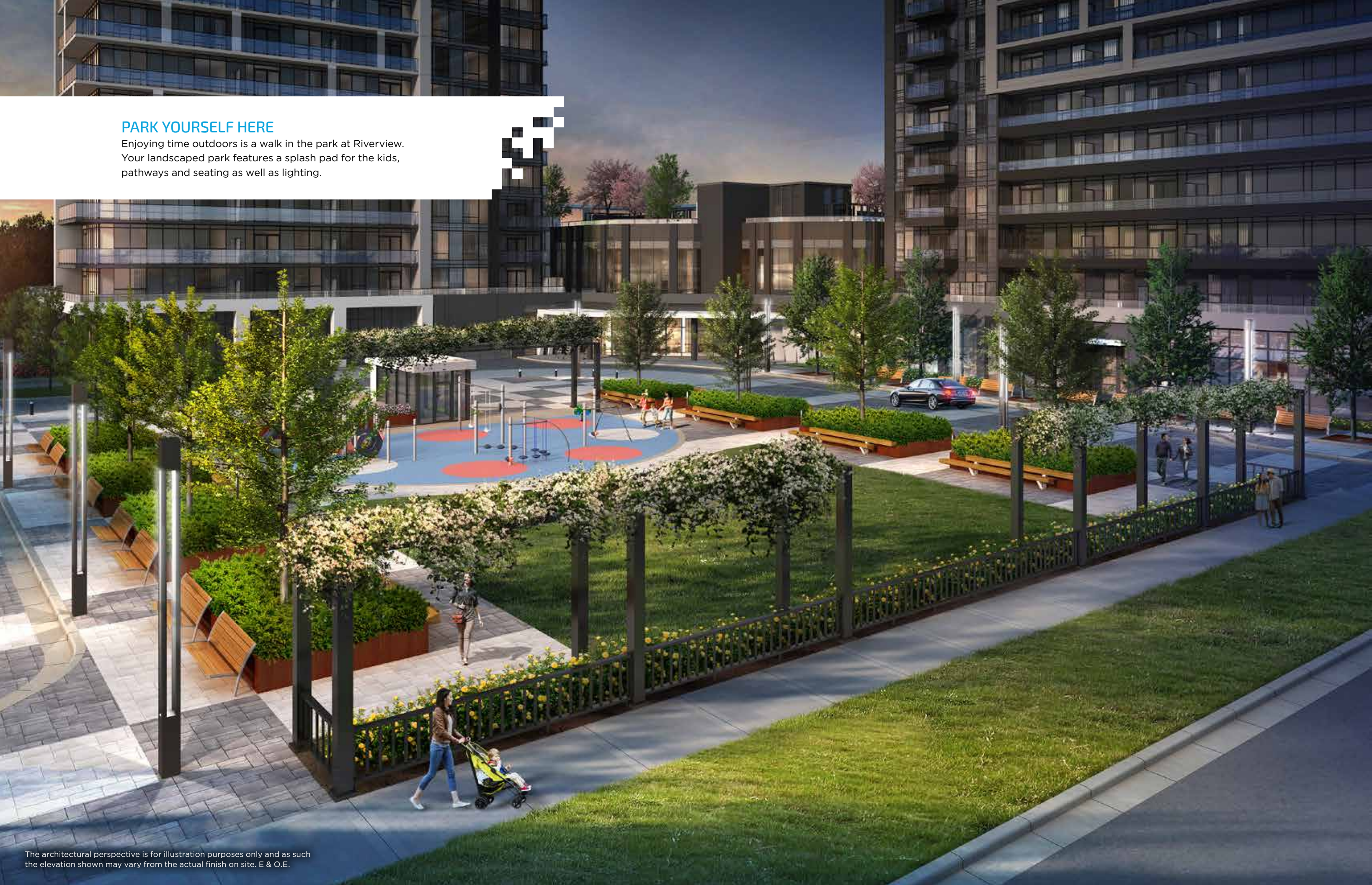
The new Seneca College Campus on Hwy 7 at the 404 is just down the road.

The main Seneca Campus is a short drive down the 404. The Progress Campus of Centennial College is near Markham Road and the 401, and both Centennial College and University of Toronto offer Scarborough Campuses near the 401 and Morningside. So if you're looking to improve your skills and get ahead, Riverview is where you want to be.

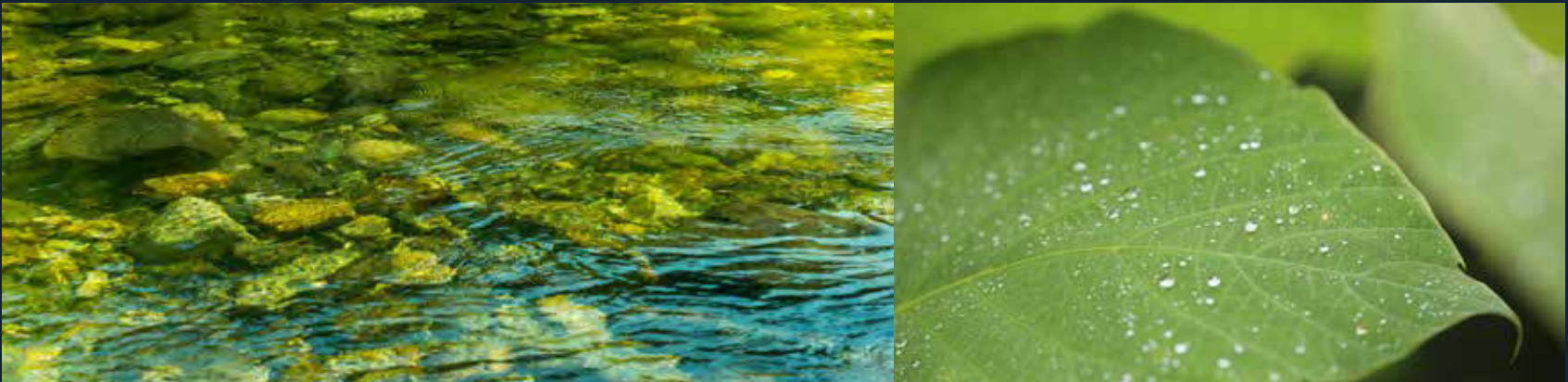


PARK YOURSELF HERE

Enjoying time outdoors is a walk in the park at Riverview. Your landscaped park features a splash pad for the kids, pathways and seating as well as lighting.



RIVERVIEW IS TRANQUIL



In Uptown Markham, a river really does run through our community. The winding tree-lined banks of the Rouge River are right outside your door, with trails and paths and parks waiting for you to explore. Or perhaps you'd rather just relax in the sun on a comfortable bench under a spreading shade tree in Riverview's own outdoor park. Downstream, the Rouge River connects to the magnificent Rouge Park, at 80 square kilometres, the largest Urban Park in all of North America. Green and tranquil, quiet and serene, the river connects us to Nature, and to each other.





### LIVE, PLAY - AND SHOP!

Riverview's retail zone comprises seven shops. Enjoy a leisurely browse, pick up a gift or grab a coffee before catching the VIVA bus. The ultimate in convenience!

## RIVERVIEW IS TRANSFORMATIVE



Commanding the heart of Uptown Markham, the tall towers of Riverview tell a rich story of confidence, aspiration and chic modern style. Offering the convenience of retail shopping on the ground floor, this is a place where you have the freedom to experience each new day on your own terms while the historic charm of Old Unionville is a reassuring link to traditions of the past. Riverview is a transformative highpoint in the elevation of Markham to a world renowned community. And you can call it home.





Actual view from Riverview Uptown Markham.

## PENTHOUSE LOFTS & SUITES WITH SPECTACULAR 360° VIEWS



When it comes to magnificent vistas, every view at Riverview is breathtaking. None more so than the 15 two-storey Penthouse Lofts that overlook Thornhill and Markham's many splendours all the way to Downtown Toronto and Lake Ontario.

South, east and west-facing suites have views of the Rouge River Valley that runs through the heart of Uptown Markham, with the Toronto skyline in the distance. And north facing suites overlook tree-lined streets to charming Downtown Unionville. Elevate your expectations, and rise up to the stunning vistas of Riverview.



RIVERVIEW IS ELEGANT

BUILDING B

BUILDING A

BUILDING C

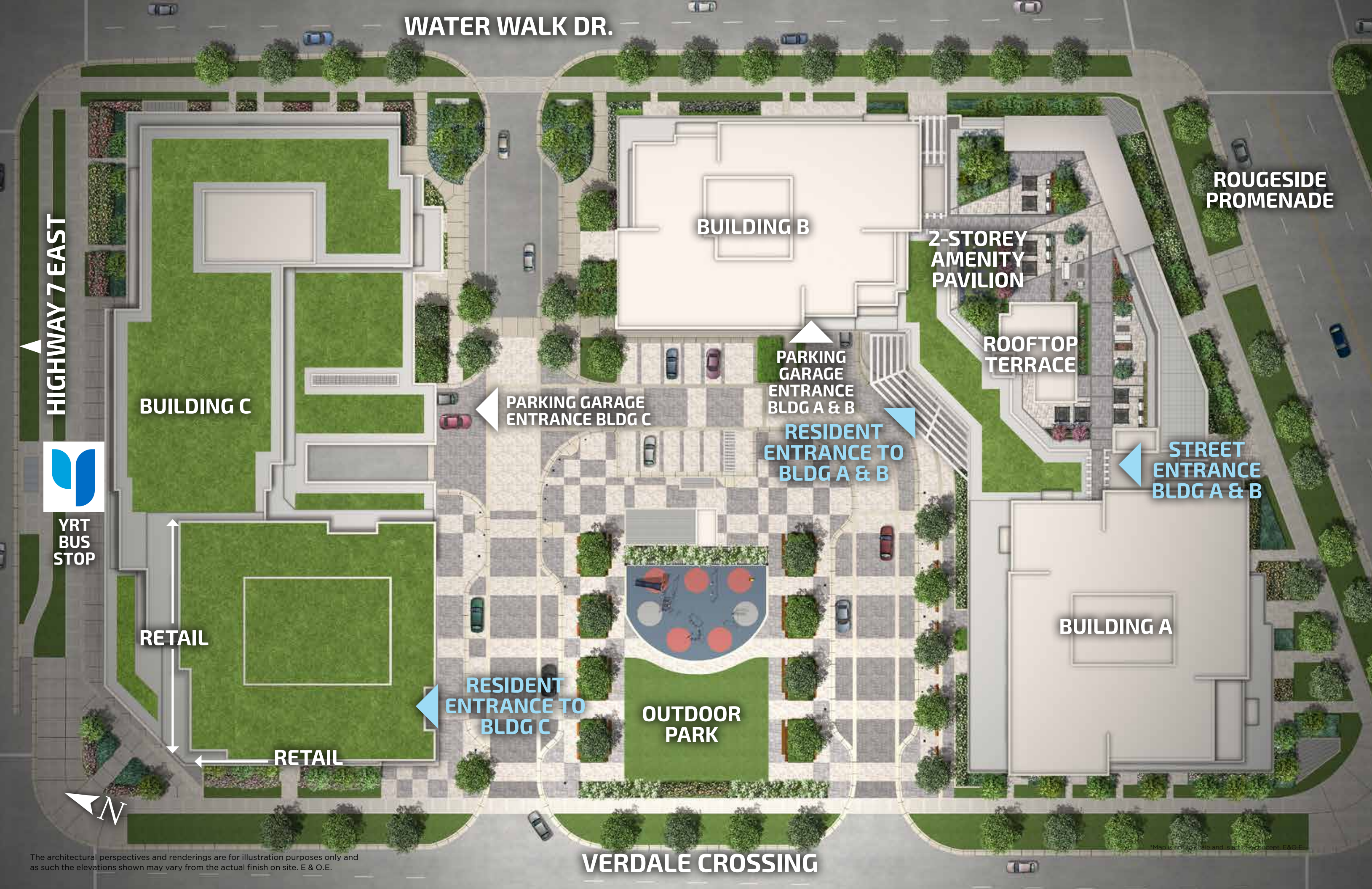


The architectural perspective is for illustration purposes only and as such the elevation shown may vary from the actual finish on site. E & O.E.



The architectural perspective is for illustration purposes only and as such the elevation shown may vary from the actual finish on site. E & O.E.





## RIVERVIEW IS INSPIRED



In a rare setting that overlooks the Rouge River, Riverview consists of three signature towers configured to create an exclusive enclave community of elegance. Each building offers lavish condominium living brimming with modern luxury and high-end features. A three tier, state-of-the-art Amenity Pavilion with Rooftop Terrace provides luxurious facilities for the most sophisticated lifestyles. Each of three designer Lobby entrances feature concierge services. Ground floor retail offers convenient shopping and resident parking is underground. A large central park at the heart of Riverview complements the community's many green features while providing a lush space for residents to enjoy outdoor living.



# RIVERVIEW IS LIFESTYLE

Riverview is designed to offer you a lifestyle of complete opulence and sophistication. An innovative two-storey Amenity Pavilion and Rooftop Terrace has been created by top architects, exclusively for you and your condominium community. Experience elegant amenity-rich living that rivals the world's most luxurious lifestyles. From the moment you awaken, you have at your fingertips a menu of high-end amenities to create your enviable lifestyle. What will you enjoy today?



# 2-STOREY AMENITY PAVILION & ROOFTOP TERRACE



Connecting Building A & B, a light-filled glass pavilion at the podium addresses the street in an individual manner reminiscent of a prism enlivening both day and nighttime experiences of the community. Transparency and lightness is achieved by the streamlined glazing and contrast between gleaming white and dark gray colours. The future of sophisticated living is here.



The architectural perspectives and renderings are for illustration purposes only and as such the elevations shown may vary from the actual finish on site. E & O.E.



### THE FINEST OF FIRST IMPRESSIONS

When you step into the exquisite Amenity Pavilion Lobby connecting Building A & B, you will be greeted in style. Adjoining Riverview's five-star Amenity Pavilion that spans three floors, the luxurious lobby boasts unapologetic luxury while soft high-end lighting sets the tone for sophisticated living.







## AMENITY PAVILION- SECOND LEVEL

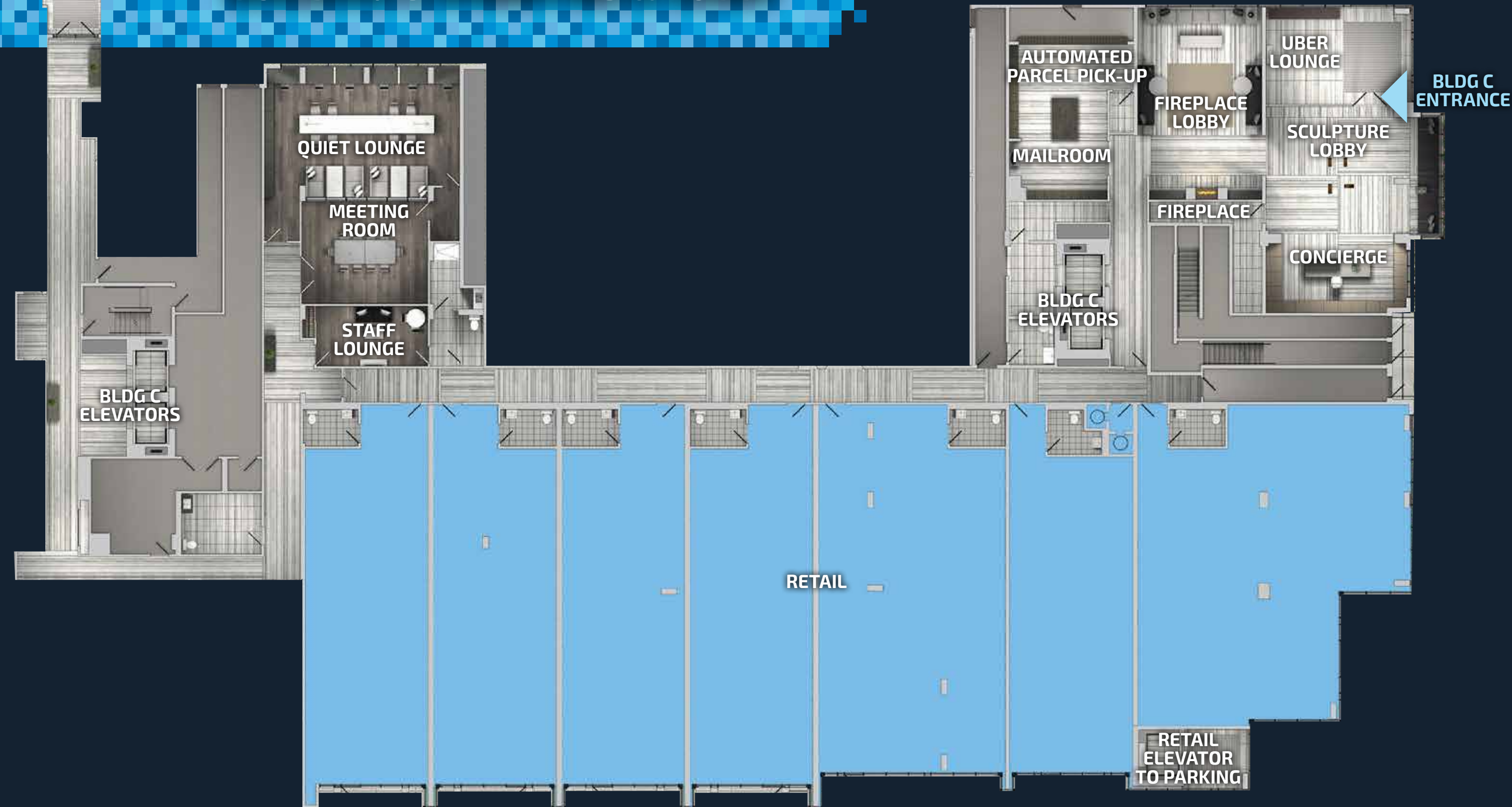


## AMENITY PAVILION – GROUND LEVEL





## BUILDING C AMENITIES & LOBBY



### THE MOST RAREFIED OF SPACES

Welcoming you home to opulent living, the luxurious entry lobby of the intimate boutique-style Building C with 24-hour concierge boasts a striking central sculpture. Designer seating and a gas fireplace invite residents to meet friends, linger and chat. Enjoy the modern convenience of an Uber lounge and mailroom with auto parcel functionality.





STATE-OF THE-ART EQUIPPED FITNESS FACILITY

Save on gym fees and spend your valuable workout time in your own fully equipped fitness facility with dramatic lighting and a club-like vibe. No need to trek out to the gym on cold winter mornings; just an elevator ride from your door is your ultimate fitness experience.



TAKE THE PLUNGE

Your fabulous new condo cares for your wellbeing. Early morning yoga in a serene studio with natural lighting floor to ceiling, followed by a refreshing dip in the pool. Relax on a poolside lounge or deck chair while looking out over the Rouge River and landscaped promenade. Enjoy a spa shower with separate Men's and Women's Change rooms and saunas, and you're ready for the day.





### FUN AND GAMES EVERY DAY

Staying home is super fun in your multipurpose space that inspires socializing with its bar, catering, dining, party room with flexible furniture, and glass doors open to the ping pong and billiards room. Invite friends, catch the game on the 2-sided large screen TV or relax in the break out casual seating area. The library is perfect for quiet study.



### ENTERTAIN IN ELEVATED STYLE

Invite friends over to enjoy a stylish outdoor experience at the Riverview Terrace with designer seating, greenspace and garden. While they're captivated by the panoramic vistas, you can impress them with a delicious BBQ. Coffee under the stars is the perfect ending to a beautiful night.





# RIVERVIEW IS SMART

## GREENER, SAFER AND LESS EXPENSIVE

Riverview is connected to tomorrow with technology that delivers improved comfort, more efficient operations, reduced energy consumption, lower operating costs, and longer life of utilities.

From the moment you turn into your parking garage and the door opens automatically for you, to the latest in security and comforts offered in-suite through a touch screen wall pad, technology is central to the community experience at Riverview.

Times Group is committed to Green Building while making your life simpler and more connected to your home and your community at reduced costs.



## SMART BUILDING FEATURES

### ENHANCED SECURITY

On-site 24-hr concierge, smartphone-controlled common area access, cameras, and elevator control provide reassurance.

### BUILDING HVAC AUTOMATION

Riverview uses a state-of-the-art Building Automation System (BAS) to control heating, ventilation, and air conditioning for higher efficiency that keeps costs down.

### SMART LIGHTING

Occupancy-sensor lighting reduces energy consumption and costs.



### AUTOMATED PARCEL DELIVERY

Receive a text notification and an email as soon as your online order is delivered to Riverview's smart lockers and held for pick up.

### EV CHARGERS

Future-ready electric vehicle charging stations for visitors.

### LICENSE PLATE RECOGNITION

No more parking garage fob fumbles or misplaced keys with license plate recognition. Just drive right on through into your parking garage.

## SMART SUITE FEATURES



### ADVANCED WI-FI

No limits, no lagging. The latest in advanced Wi-Fi is provided for your convenience. Riverview suites have unlimited ultra-high-speed 150 mbps internet. High speed internet is also available in select common amenity areas such as the state-of-the-art amenity pavilion.



### SMART LOCK SUITE ENTRY

Keyless entry is easy, convenient and you'll never worry if your door is locked again. Use your smartphone (iOS or Android) to lock and unlock your suite door's Smart Lock.



### WALL PAD HOME CONNECT



Use See & Speak video chat to welcome guests and connect with your Riverview concierge



Immediately notify authorities of an emergency



Control suite heating and cooling from your smartphone



Stay up to date and receive timely event and building notifications



Dress for success with local weather updates







# SPECTACULAR FEATURES AND FINISHES

## CONTEMPORARY FINISHING TOUCHES DESIGNED TO ENHANCE THE LOOK AND FEEL OF YOUR HOME:

- Elegant **crown moulding** in living room and dining room\*
- Comfortable, easy to maintain **contemporary laminate flooring** in hallways, kitchen, living room, dining room, foyer and den
- Warm and luxurious **40 oz. environmentally-friendly textured carpet** in bedrooms
- Durable and easy to clean **quality ceramic tile** in bathrooms and laundry room
- Designer selected **window coverings** throughout suite for style and privacy

## CAREFULLY CHOSEN PRACTICAL AND BEAUTIFUL ACCESSORIES TO ENHANCE THE LOOK AND FUNCTIONALITY OF YOUR HOME:

- **Mirrored sliding door in foyer closet** for that last check before you walk out the door \*
- Durable and easy to clean **engineered quartz stone window sills** throughout suite
- Custom **kitchen cabinetry with deep upper cabinet** over refrigerator for added storage
- Premium **granite kitchen countertop** with easy to clean **ceramic kitchen tile backsplash** , practical **undermount stainless steel kitchen sink** and easy to use modern **single lever pull-out spray kitchen faucet**
- Custom **bathroom vanity** with durable and easy to clean **granite countertop** and convenient **undermount sink** with **single lever chrome faucet** in bathroom
- Modern **frameless glass shower stall** in bathroom with non-slip acrylic base, ceramic wall tile and ceiling light \*
- Deep **soaker bathtub** for ultimate ensuite bathroom relaxation
- Convenient in-suite **laundry room front-load stacked washer and dryer** (white)

- **Outdoor duplex outlet** for suites with patio, terrace or balcony to enjoy your outdoor space \*
- **Switch-controlled split outlets** in the living room for conveniently switching a lamp on and off with a hand level wall switch

## ENERGY EFFICIENT FEATURES SELECTED TO SAVE YOU MONEY AND IMPROVE THE QUALITY OF YOUR LIFE:

- **Energy Star® appliance package:** includes energy efficient freestanding range, dishwasher and refrigerator
- **Thermally insulated Low-E Argon-filled and double-glazed windows** keep you comfortable
- Control your individual **suite metering** of hydro, hot and cold water
- Installed **Energy Recovery Ventilator (ERV)** allows fresh air into a building, retaining pre-conditioned heating or cooling and improving indoor air quality substantially
- Year round individual resident controlled heating and cooling is made possible with **4-pipe HVAC fan coil system**
- **On/Off** "occupancy switch" in each suite so you can save energy when you're away
- **Advanced Building Automation System (BAS)** for efficient operation of all building systems; heating and cooling, ventilation and lighting designed to reduce communal building costs

## ADDED VALUE SMART-TECH AMENITIES THAT GIVE YOU CONTROL OF YOUR HOME:

- **Smart Lock suite entry.** Use your smartphone (iOS or Android) to lock and unlock your suite door's Smart Lock
- **Remote access to control** your heating and cooling from your smartphone to the in-suite wall pad home connect system
- **See & Speak video chat to welcome guests** and **connect with your Riverview concierge** using the in-suite wall pad home connect system

- **Local weather and event building notifications** are at your fingertips using the in-suite wall pad home connect system
- **Stay secure by immediately notifying an emergency** by way of the in-suite wall pad home connect system
- **Internet and cable television outlets** in bedrooms, living room and den (one telephone outlet per Builder's location)
- Receive a text notification and email as soon as your online order is delivered to Riverview's smart lockers and held for pick up with **automated parcel delivery**
- **Unlimited ultra high-speed internet** in suites, foyer, amenity pavilion and selected areas so you stay connected
- Future-ready **electric vehicle charging** stations for visitors

See "RIVERVIEW IS SMART" page for more information on Smart Building and Smart Suite Features offered at Riverview.

## ADDITIONAL SECURITY SYSTEMS TO KEEP YOU SAFE:

- Resident parking garage access with **automated license plate recognition**
- **Security coded access fob** for all residents
- **24-hour, 7 days a week dedicated concierge**
- **Live closed circuit cameras** in garages and at entrances
- **Sprinkler system and smoke alarms** throughout building and individual suites, with in-suite fire alarm and speaker connected to fire annunciator panel

\* Indicates as per suite plan  
\*\* See Vendor's representative for details



# TG

## TIMES GROUP

# LEED

Riverview is registered to achieve LEED New Construction Gold Certification

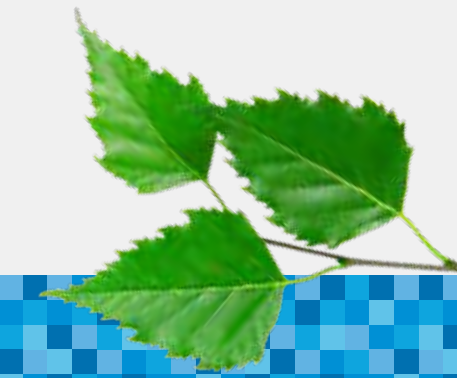


- MAJESTIC COURT, LEED GOLD CERTIFICATION 2011
- EDEN PARK I, LEED GOLD CERTIFICATION 2012
- EDEN PARK II, LEED GOLD CERTIFICATION 2015
- RIVER PARK, LEED PLATINUM CERTIFICATION 2017
- RIVERWALK, LEED GOLD CERTIFICATION 2018



**LEED** (Leadership in Energy and Environmental Design) is an internationally recognized mark of excellence for buildings designed and built using strategies aimed at improving performance in energy savings, water efficiency, CO2 emissions reduction, and improved indoor environmental quality.

- ENERQUALITY BUILDING INNOVATION MID/HIGH-RISE 2016
- ENERQUALITY BUILDING INNOVATION MID/HIGH-RISE 2017
- BILD GREEN BUILDER OF THE YEAR HIGH-RISE 2013
- MARKHAM BOARD OF TRADE BUSINESS EXCELLENCE AWARD



## TIMES GROUP LEEDS THE WAY

Five-time LEED Certification achiever, Times Group Corporation is committed to sustainable design and construction - and it shows in the high number of awards the builder has received. Now, Riverview will be built to the same heights of excellence in sustainability.

### REDUCE TRANSPORTATION EMISSIONS

Ample bike storage, nearby access to public transit and onsite electric vehicle charging stations

### VEGETATED GREEN ROOF

Reduces heat island effect and energy costs while offering open space for occupants

### LED'S & OCCUPANCY SENSOR

High performance lighting that reduces energy and exterior light pollution

### RAINWATER IRRIGATION SYSTEM & LOW FLOW PLUMBING

Maximizes water conservation by reusing rainwater for plant irrigation while reducing interior water consumption by 40%

### ENERGY COST SAVINGS OF 35-40%

Exceptionally insulated walls & roof, high performance windows, in-suite Heat Recovery Ventilators (HRVs) provide fresh outdoor air directly to your space

### WASTE MANAGEMENT

Tri-sorters on each floor allowing residents to dispose of waste, organics and recyclables in one convenient location.

### INDOOR AIR QUALITY

In-suite finishes and paints used are non-toxic and verified to be low VOC. An Indoor Air Quality plan was implemented during construction to ensure building materials, suite finishes and in-suite air quality were not contaminated.

### OCCUPANT COMFORT

Suites are designed to highest standard for ventilation and thermal comfort requirements while providing excellent views to the outdoors.



# PORTFOLIO OF ACCOMPLISHMENT



DERBY TOWER  
Hwy 7 & Bayview Ave.



EDEN PARK I TOWNHOMES  
Hwy 7 & Bayview Ave.



THORNHILL TOWERS  
Hwy 7 & Times Ave.



EDEN PARK I TOWERS  
Hwy 7 & Bayview Ave.



EDEN PARK II  
Hwy 7 & Bayview Ave.



RIVER PARK  
Hwy 7 & Birchmount Rd.



EDEN PARK II TOWNHOMES  
Hwy 7 & Bayview Ave.



RIVERWALK  
Hwy 7 & Birchmount Rd.



MAJESTIC COURT  
Hwy 7 & South Town Centre Blvd.



THE 500 CONDOS  
Wellesley St. & Sherbourne St.



PARKVIEW TOWERS  
Hwy 7 & Bayview Ave.



BAYVIEW MANSION I & II  
Bayview Ave. & Sheppard Ave.



REZEN  
Adelaide St. & Frederick St.



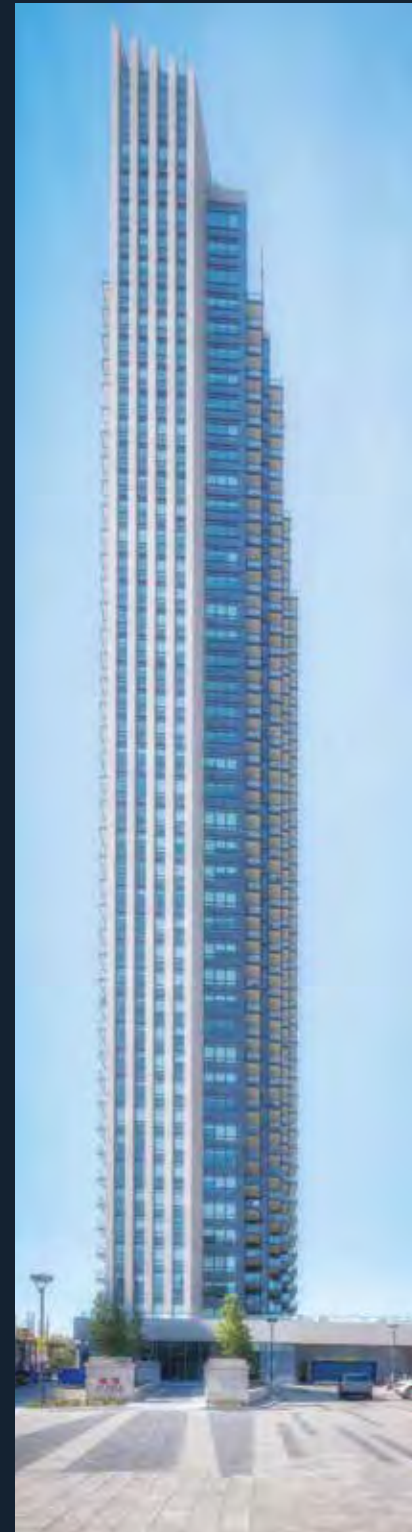
THE 500 LOFTS  
Wellesley St. & Sherbourne St.



GALLERIA TOWER  
Hwy 7 & Bayview Ave.



VICTORIA TOWER  
Hwy 7 & Bayview Ave.



KEY WEST  
Lakeshore Blvd. & Park Lawn Rd.



PAVILIA PARK TOWNS  
Hwy 7 & South Park Rd.



MILLWOOD  
Yonge St. & Davisville Ave.



LUXE TOWNS  
Hwy 7 & Valleymede Dr.



VALLEYMEDE TOWERS  
Hwy 7 & Valleymede Dr.



UPTOWN MARKHAM  
Hwy 7 & Birchmount Rd.



RICHMOND PARK  
North Leslie in Richmond Hill



VILLAGE PARK ESTATE HOMES  
Hwy 7 & Village Parkway



BROADWAY  
Yonge St. & Eglinton Ave.



VILLAGE PARK TOWNHOMES  
Hwy 7 & Village Parkway



PAVILIA TOWERS  
Hwy 7 & South Park Rd.



SADDLECREEK  
Hwy 7 & South Park Rd.



RIVERSIDE  
Hwy 7 & Birchmount Rd.



RIVERSIDE  
Hwy 7 & Birchmount Rd.



HYCREST RESIDENCE  
Hwy 7 & Pond Dr.

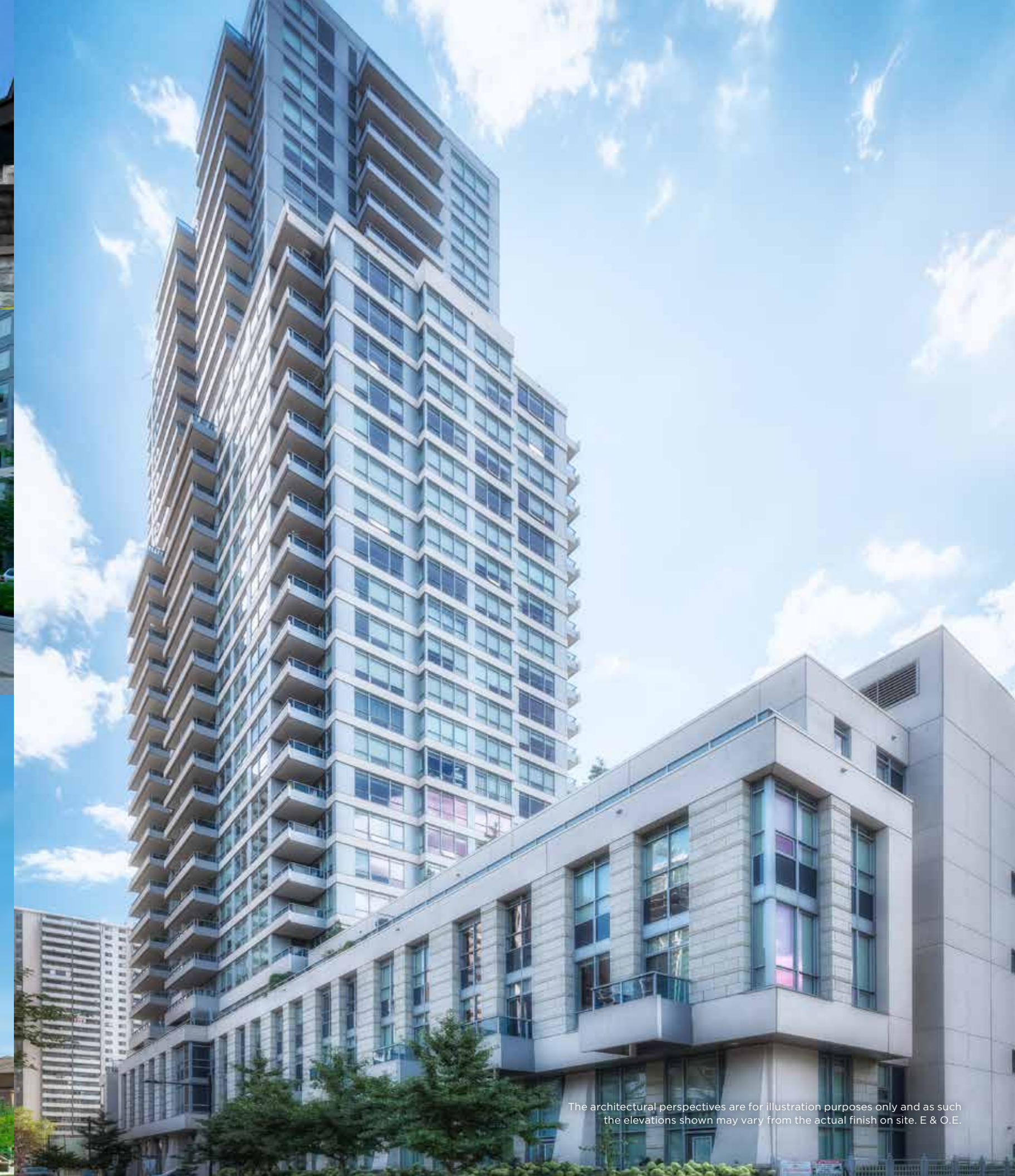


## THE TIMES GROUP STORY



Times Group is a premier name in the industry with over 30 years of business and a record of excellence across the real estate development spectrum of the Greater Toronto Area. Inspired by core family values, Times Group has become a leading player in land acquisition, planning, design, development and construction of premium-quality residential and commercial properties. With a focus on exceptional quality and enduring value, Times Group is actively engaged in the development of distinctive homes, condominium townhouses and high rise condominium projects, in the Greater Toronto Area.

Every Times Group project is distinguished by an integrated planning process, a meticulous attention to detail and a commitment to enduring value. Winner of many prestigious industry awards for design, innovation and sustainable building, Times Group was most recently honoured with the 2016 and 2017 EnerQuality Building Innovation Award Mid/High Rise in recognition of its green building philosophy.



The architectural perspectives are for illustration purposes only and as such the elevations shown may vary from the actual finish on site. E & O.E.



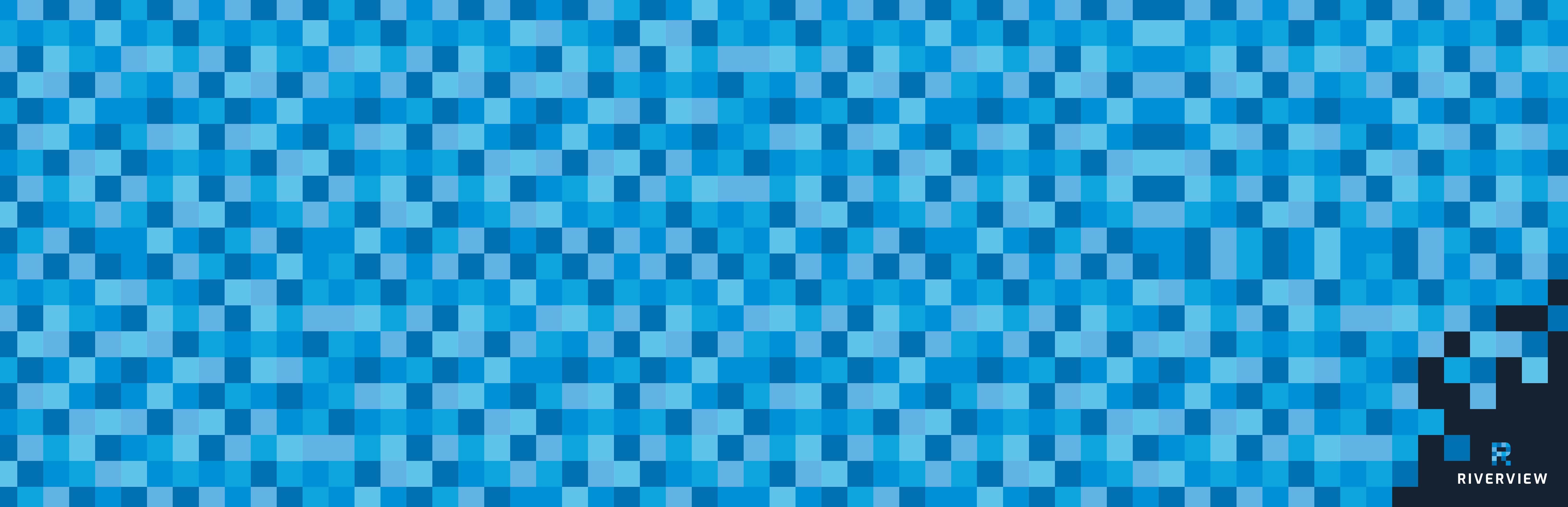


Behind every Times Group building is the industry leading expertise of Life Construction, the building division of our company. With sophisticated technical knowledge, remarkable attention to detail and an unwavering commitment to quality, Life Construction ensures that a home from Times Group will make you proud, comfortable and satisfied, for life.



TEAM LIFE









## RIVERVIEW



381 Highway 7 East  
Thornhill, Ontario, L3T 7T1  
T: 905.479.5557  
F: 905.479.1942

HOURS:  
Mon-Thu: 12-7pm  
Fri: Closed  
Sat & Sun: 12-5pm

info@uptownmarkham.com  
RiverviewCondo.ca



TIMES GROUP

